

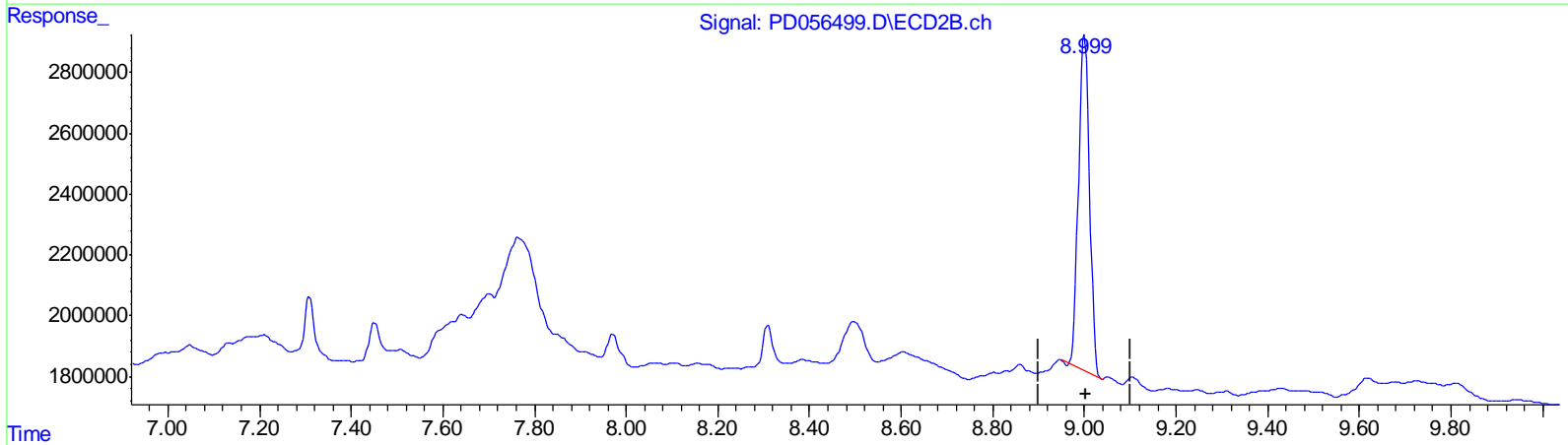
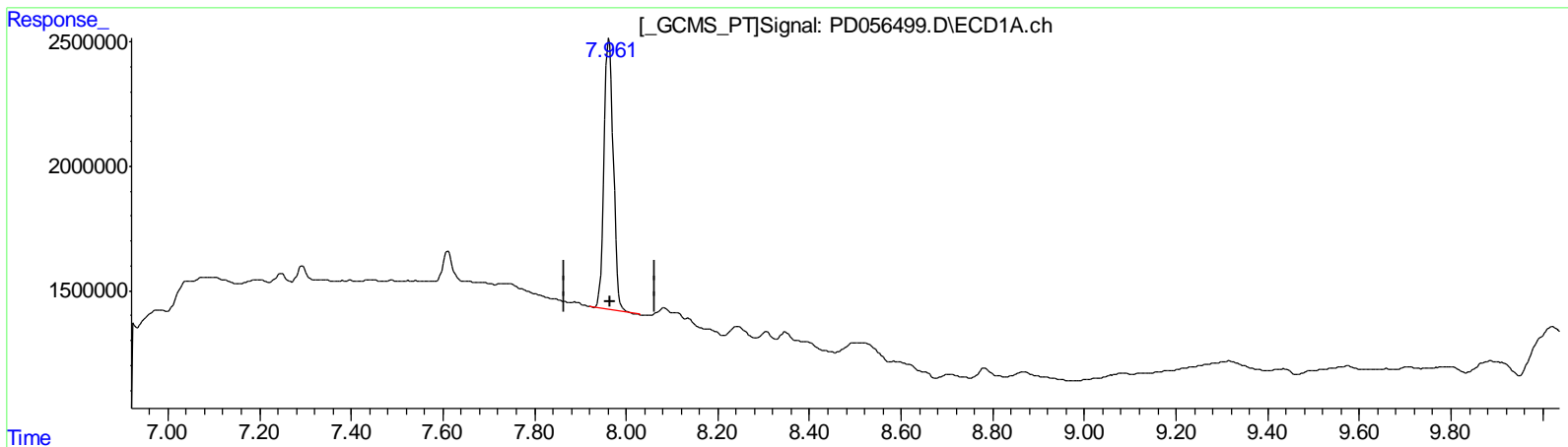
Data Path : Z:\pestpcbsrv\HPCHEM1\ECD_D\Data\PD121719\
 Data File : PD056499.D
 Signal(s) : Signal #1: ECD1A.ch Signal #2: ECD2B.ch
 Acq On : 17 Dec 2019 14:01
 Operator : SG\AJ
 Sample : K6171-16
 Misc :
 ALS Vial : 20 Sample Multiplier: 1

Instrument :
 ECD_D
ClientSampled :
 C0BZ2

Manual Integrations
APPROVED
 Ankita
 12/18/2019 10:44:12 AM

Integration File signal 1: autoint1.e
 Integration File signal 2: autoint2.e
 Quant Time: Dec 18 00:42:49 2019
 Quant Method : Z:\pestpcbsrv\HPCHEM1\ECD_D\Method\PD120219CLP.M
 Quant Title : GC Extractables
 QLast Update : Tue Dec 03 08:51:13 2019
 Response via : Initial Calibration
 Integrator: ChemStation

Volume Inj. : 1 µl
 Signal #1 Phase : ZB-MR2 Signal #2 Phase: ZB-MR1
 Signal #1 Info : 30M x 0.32mm x0.2 Signal #2 Info : 30M x 0.32mm x 0.50µm



QEdit

(27) Decachlorobiphenyl (SA)
 7.963min 16.827 ng/ml
 response 15193917

(27) Decachlorobiphenyl #2 (SA)
 9.000min 15.256 ng/ml
 response 18355725

(+) = Expected Retention Time

Data Path : Z:\pestpcbsrv\HPCHEM1\ECD_D\Data\PD121719\
 Data File : PD056499.D
 Signal(s) : Signal #1: ECD1A.ch Signal #2: ECD2B.ch
 Acq On : 17 Dec 2019 14:01
 Operator : SG\AJ
 Sample : K6171-16
 Misc :
 ALS Vial : 20 Sample Multiplier: 1

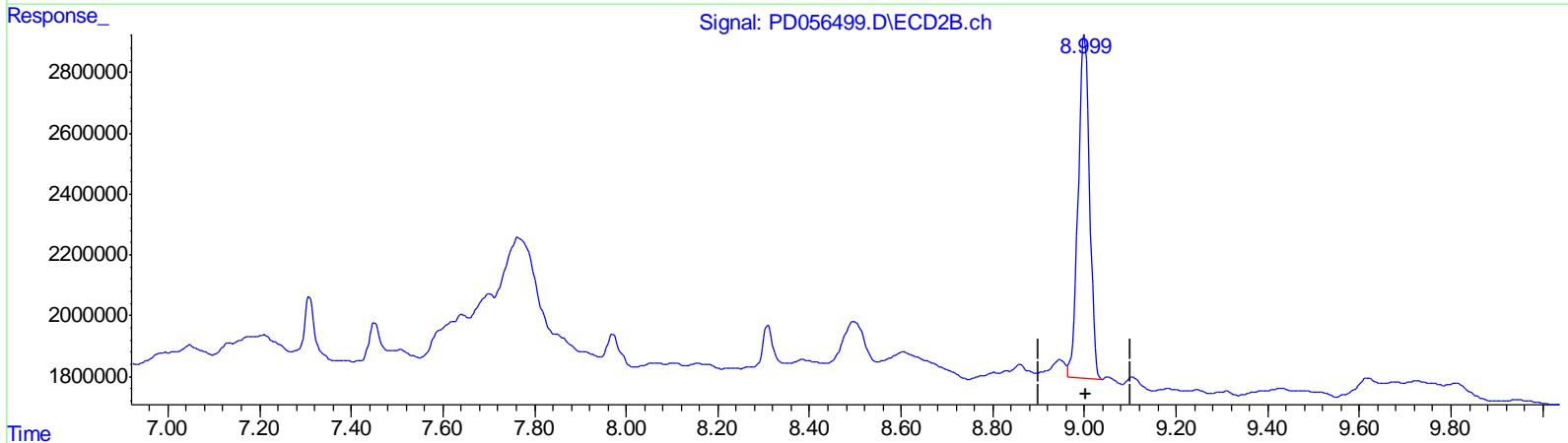
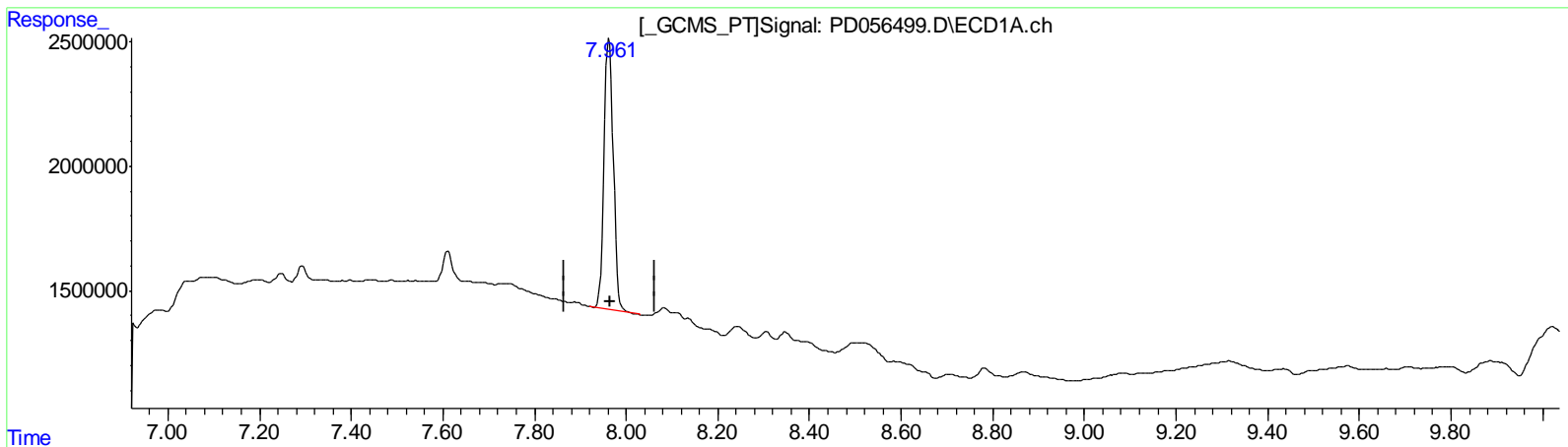
Instrument :
 ECD_D
 ClientSampled :
 C0BZ2

Manual Integrations
 APPROVED

Ankita
 12/18/2019 10:44:12 AM

Integration File signal 1: autoint1.e
 Integration File signal 2: autoint2.e
 Quant Time: Dec 18 00:42:49 2019
 Quant Method : Z:\pestpcbsrv\HPCHEM1\ECD_D\Method\PD120219CLP.M
 Quant Title : GC Extractables
 QLast Update : Tue Dec 03 08:51:13 2019
 Response via : Initial Calibration
 Integrator: ChemStation

Volume Inj. : 1 µl
 Signal #1 Phase : ZB-MR2 Signal #2 Phase: ZB-MR1
 Signal #1 Info : 30M x 0.32mm x0.2 Signal #2 Info : 30M x 0.32mm x 0.50µm



QEdit

(27) Decachlorobiphenyl (SA)

7.963min 16.827 ng/ml

response 15193917

(27) Decachlorobiphenyl #2 (SA)

8.999min 16.158 ng/ml m

response 19439895

(+) = Expected Retention Time

Data Path : Z:\pestpcbsrv\HPCHEM1\ECD_D\Data\PD121719\
 Data File : PD056499.D
 Signal(s) : Signal #1: ECD1A.ch Signal #2: ECD2B.ch
 Acq On : 17 Dec 2019 14:01
 Operator : SG\AJ
 Sample : K6171-16
 Misc :
 ALS Vial : 20 Sample Multiplier: 1

Instrument :
 ECD_D
 ClientSampleId :
 C0BZ2

Integration File signal 1: autoint1.e
 Integration File signal 2: autoint2.e
 Quant Time: Dec 18 00:42:49 2019
 Quant Method : Z:\pestpcbsrv\HPCHEM1\ECD_D\Method\PD120219CLP.M
 Quant Title : GC Extractables
 QLast Update : Tue Dec 03 08:51:13 2019
 Response via : Initial Calibration
 Integrator: ChemStation

Manual Integrations
 APPROVED

Ankita
 12/18/2019 10:44:12 AM

Volume Inj. : 1 µl
 Signal #1 Phase : ZB-MR2 Signal #2 Phase: ZB-MR1
 Signal #1 Info : 30M x 0.32mm x0.2 Signal #2 Info : 30M x 0.32mm x 0.50µm

Compound	RT#1	RT#2	Resp#1	Resp#2	ng/ml	ng/ml
----------	------	------	--------	--------	-------	-------

 System Monitoring Compounds

1) SA Tetrachlo...	3.287	3.962	7936185	13433439	9.582	11.174
27) SA Decachlor...	7.963	8.999	15193917	19439895	16.827	16.158m

AJ
12/19/19

Target Compounds

(f)=RT Delta > 1/2 Window (#)=Amounts differ by > 25% (m)=manual int.