

Data Path : Z:\pestpcbsrv\HPCHEM1\ECD_D\Data\PD121720\
 Data File : PD060766.D
 Signal(s) : Signal #1: ECD1A.ch Signal #2: ECD2B.ch
 Acq On : 17 Dec 2020 13:09
 Operator : DD\AJ
 Sample : L5088-12
 Misc :
 ALS Vial : 14 Sample Multiplier: 1

Instrument :
 ECD_D
 ClientSampleId :

Integration File signal 1: autoint1.e
 Integration File signal 2: autoint2.e
 Quant Time: Dec 18 03:03:58 2020
 Quant Method : Z:\pestpcbsrv\HPCHEM1\ECD_D\Method\PD121620.M
 Quant Title : GC Extractables
 QLast Update : Thu Dec 17 03:53:08 2020
 Response via : Initial Calibration
 Integrator: ChemStation

Volume Inj. : 2 µl
 Signal #1 Phase : ZB-MR2 Signal #2 Phase: ZB-MR1
 Signal #1 Info : 30M x 0.32mm x0.2 Signal #2 Info : 30M x 0.32mm x 0.50µm

| | Compound | RT#1 | RT#2 | Resp#1 | Resp#2 | ng/ml | ng/ml |
|-----------------------------|-----------------|--------|--------|----------|----------|--------|---------|
| ----- | | | | | | | |
| System Monitoring Compounds | | | | | | | |
| 1) | SA Tetrachlo... | 3.501 | 4.022 | 14958477 | 64423593 | 13.758 | 13.709 |
| 28) | SA Decachlor... | 8.288 | 9.106 | 21273918 | 57382930 | 15.059 | 15.359 |
| Target Compounds | | | | | | | |
| 10) | B gamma-Chl... | 0.000 | 6.139 | 0 | 2386723 | N.D. | 0.413 # |
| 11) | B alpha-Chl... | 0.000 | 6.212 | 0 | 2850165 | N.D. | 0.508 # |
| 12) | B 4,4'-DDE | 0.000 | 6.365 | 0 | 1270228 | N.D. | 0.240 # |
| 13) | MA Dieldrin | 0.000 | 6.508 | 0 | 3132347 | N.D. | 0.561 # |
| 16) | A 4,4'-DDD | 0.000 | 6.863 | 0 | 4585885 | N.D. | 1.043 # |
| 17) | MA 4,4'-DDT | 6.438 | 7.157 | 3108015 | 1303003 | 2.362 | 0.292 # |
| 19) | B Endosulfa... | 6.729 | 7.263f | 1994528 | 3741185 | 1.657 | 0.845 # |
| 20) | A Methoxychlor | 6.975 | 0.000 | 5816178 | 0 | 7.469 | N.D. # |
| 21) | B Endrin ke... | 7.252f | 0.000 | 2022649 | 0 | 1.281 | N.D. # |
| 25) | Chlordane-3 | 0.000 | 6.139 | 0 | 2386723 | N.D. | 3.362 # |
| 26) | Chlordane-4 | 0.000 | 6.212 | 0 | 2850165 | N.D. | 3.440 # |

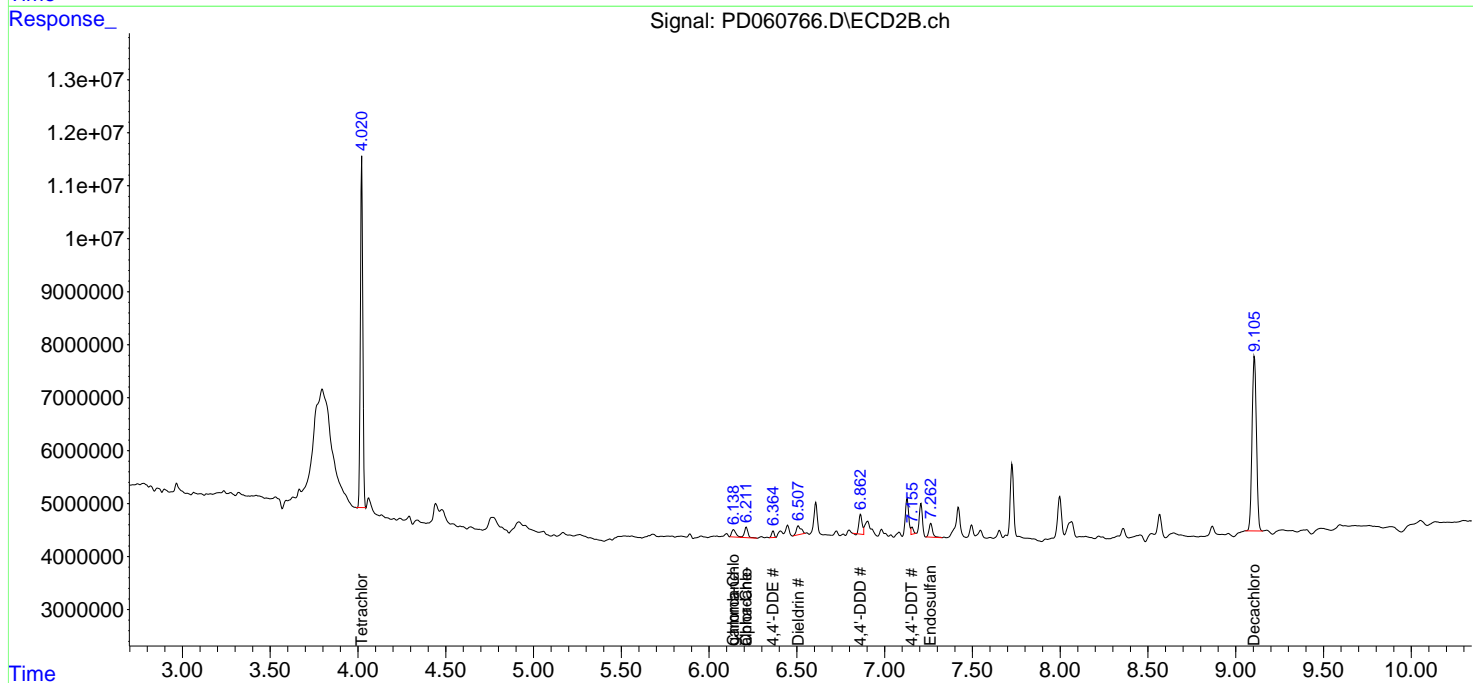
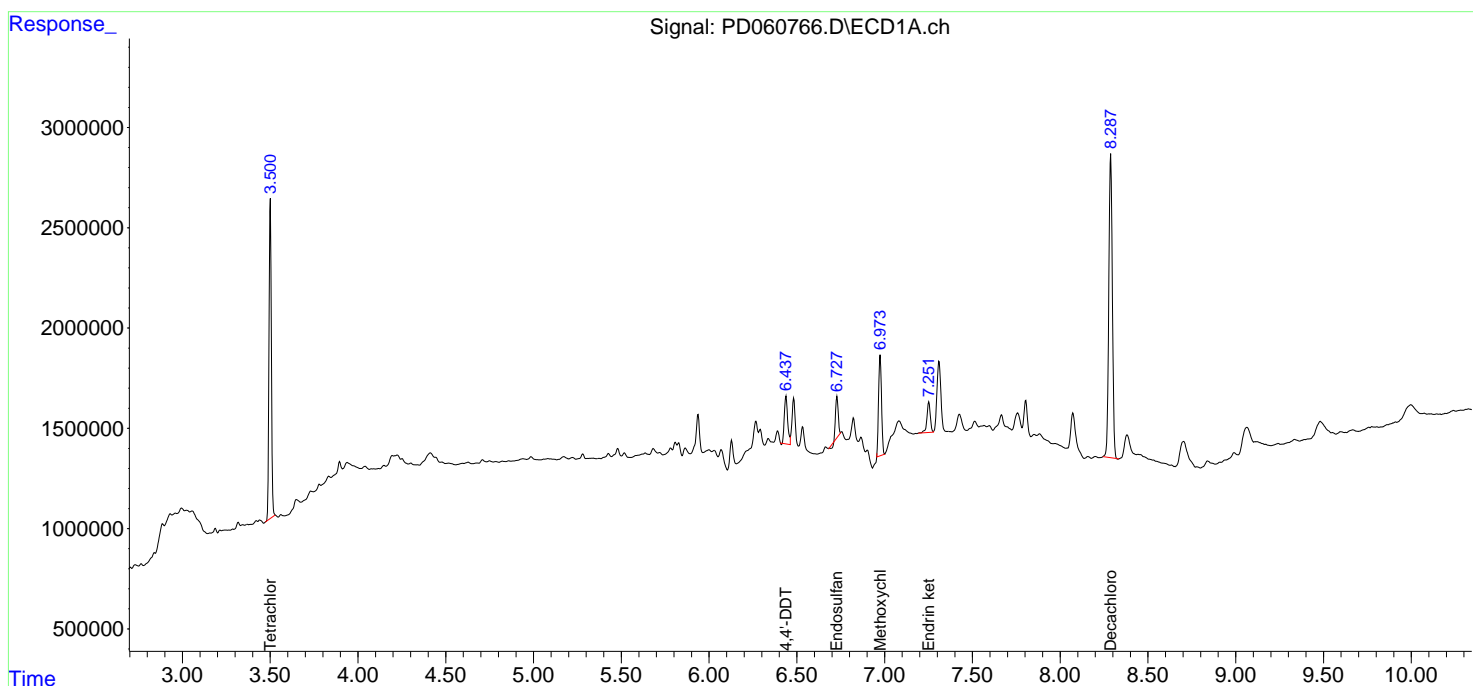
(f)=RT Delta > 1/2 Window (#)=Amounts differ by > 25% (m)=manual int.

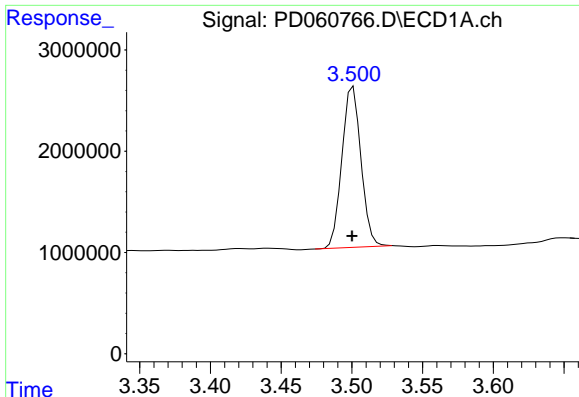
Data Path : Z:\pestpcbsrv\HPCHEM1\ECD_D\Data\PD121720\
 Data File : PD060766.D
 Signal(s) : Signal #1: ECD1A.ch Signal #2: ECD2B.ch
 Acq On : 17 Dec 2020 13:09
 Operator : DD\AJ
 Sample : L5088-12
 Misc :
 ALS Vial : 14 Sample Multiplier: 1

Instrument :
 ECD_D
 ClientSampled :

Integration File signal 1: autoint1.e
 Integration File signal 2: autoint2.e
 Quant Time: Dec 18 03:03:58 2020
 Quant Method : Z:\pestpcbsrv\HPCHEM1\ECD_D\Method\PD121620.M
 Quant Title : GC Extractables
 QLast Update : Thu Dec 17 03:53:08 2020
 Response via : Initial Calibration
 Integrator: ChemStation

Volume Inj. : 2 µl
 Signal #1 Phase : ZB-MR2 Signal #2 Phase: ZB-MR1
 Signal #1 Info : 30M x 0.32mm x0.2 Signal #2 Info : 30M x 0.32mm x 0.50µm

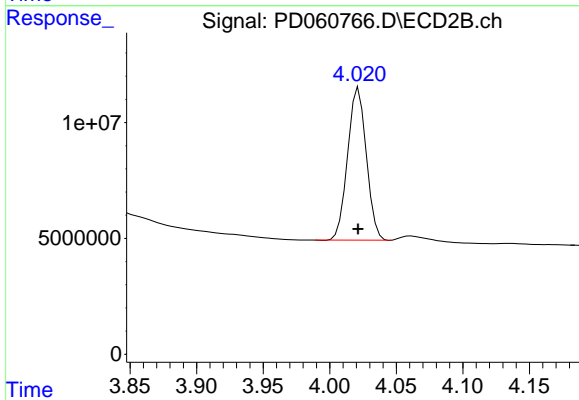




#1 Tetrachloro-m-xylene

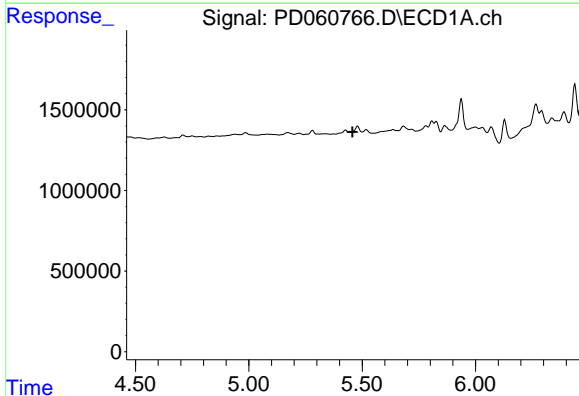
R.T.: 3.501 min
 Delta R.T.: 0.000 min
 Response: 14958477
 Conc: 13.76 ng/ml

Instrument :
 ECD_D
 ClientSampled :



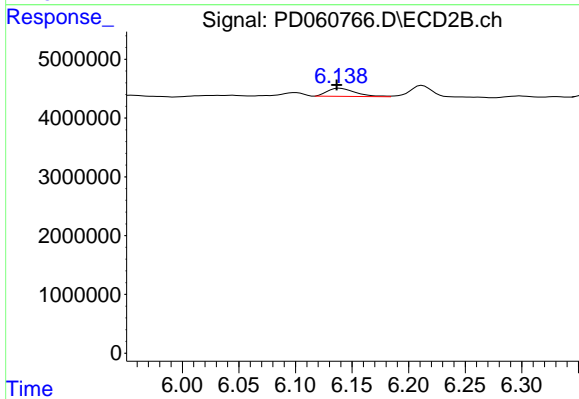
#1 Tetrachloro-m-xylene

R.T.: 4.022 min
 Delta R.T.: 0.000 min
 Response: 64423593
 Conc: 13.71 ng/ml



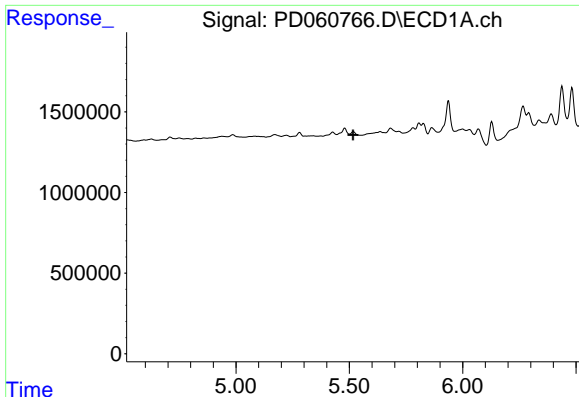
#10 gamma-Chlordane

R.T.: 0.000 min
 Exp R.T. : 5.458 min
 Response: 0
 Conc: N.D.



#10 gamma-Chlordane

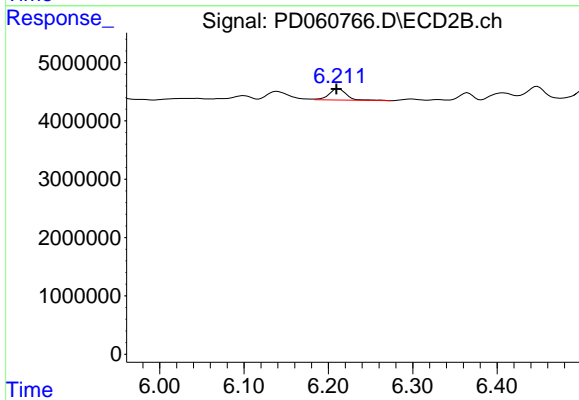
R.T.: 6.139 min
 Delta R.T.: 0.003 min
 Response: 2386723
 Conc: 0.41 ng/ml



#11 alpha-Chlordane

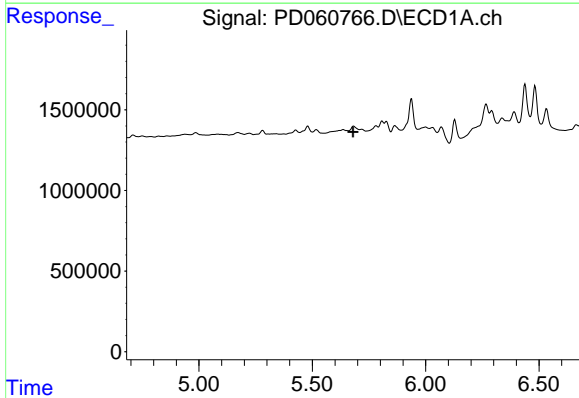
R.T.: 0.000 min
 Exp R.T. : 5.517 min
 Response: 0
 Conc: N.D.

Instrument :
 ECD_D
 ClientSampleId :



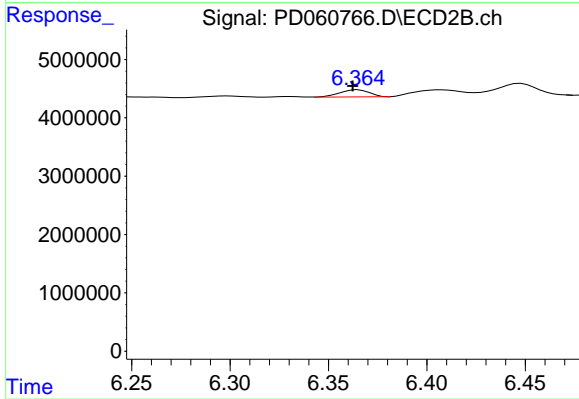
#11 alpha-Chlordane

R.T.: 6.212 min
 Delta R.T.: 0.003 min
 Response: 2850165
 Conc: 0.51 ng/ml



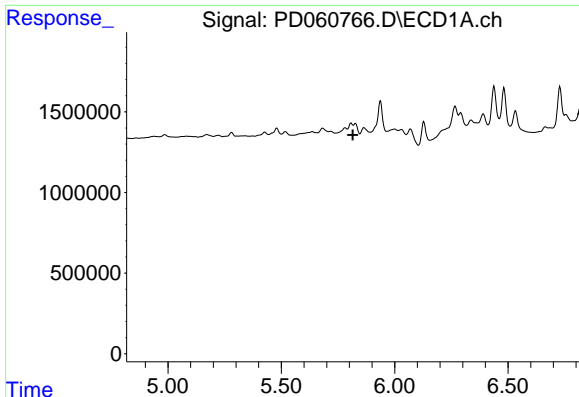
#12 4,4'-DDE

R.T.: 0.000 min
 Exp R.T. : 5.680 min
 Response: 0
 Conc: N.D.



#12 4,4'-DDE

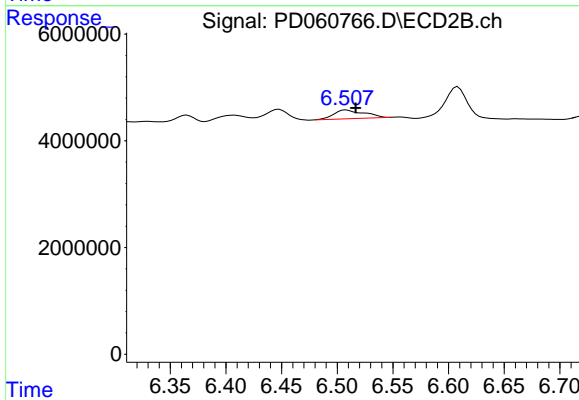
R.T.: 6.365 min
 Delta R.T.: 0.003 min
 Response: 1270228
 Conc: 0.24 ng/ml



#13 Dieldrin

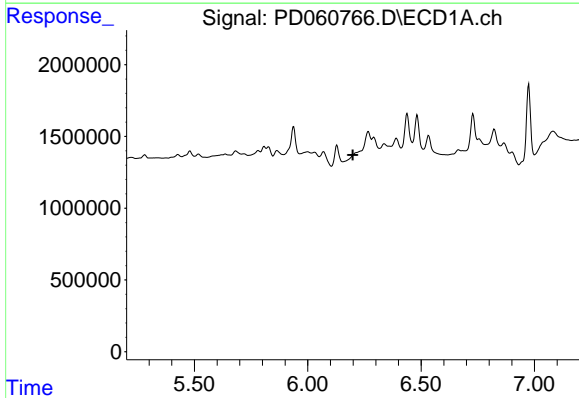
R.T.: 0.000 min
 Exp R.T. : 5.815 min
 Response: 0
 Conc: N.D.

Instrument :
 ECD_D
 ClientSampleId :



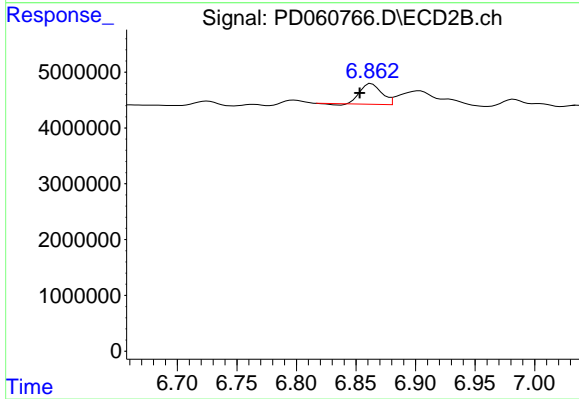
#13 Dieldrin

R.T.: 6.508 min
 Delta R.T.: -0.009 min
 Response: 3132347
 Conc: 0.56 ng/ml



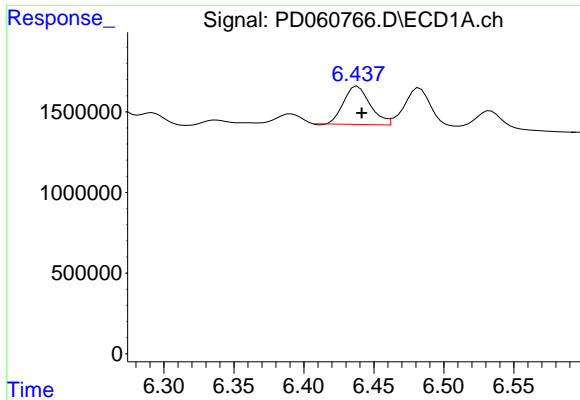
#16 4,4'-DDD

R.T.: 0.000 min
 Exp R.T. : 6.199 min
 Response: 0
 Conc: N.D.



#16 4,4'-DDD

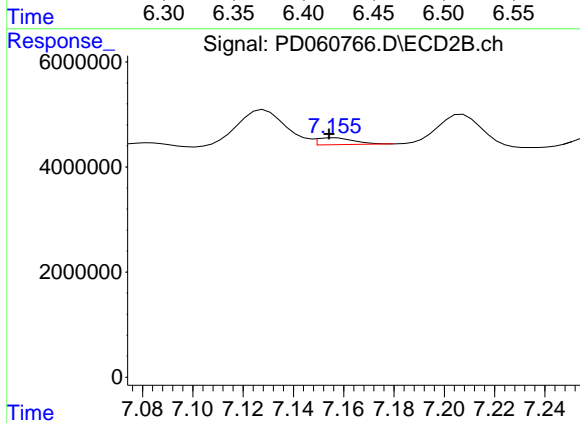
R.T.: 6.863 min
 Delta R.T.: 0.010 min
 Response: 4585885
 Conc: 1.04 ng/ml



#17 4,4'-DDT

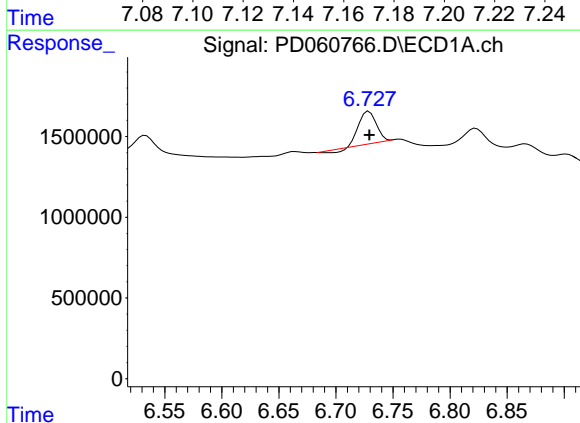
R.T.: 6.438 min
Delta R.T.: -0.003 min
Response: 3108015
Conc: 2.36 ng/ml

Instrument :
ECD_D
ClientSampleId :



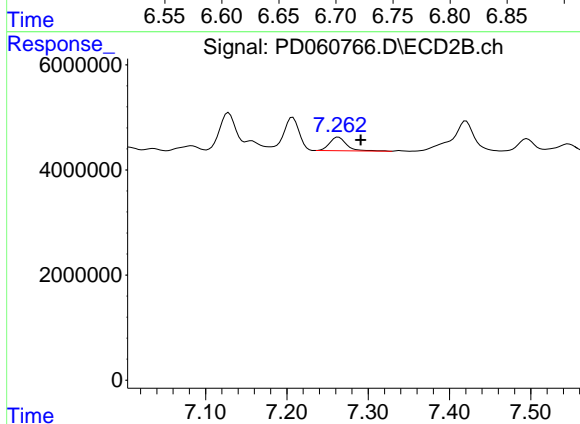
#17 4,4'-DDT

R.T.: 7.157 min
Delta R.T.: 0.002 min
Response: 1303003
Conc: 0.29 ng/ml



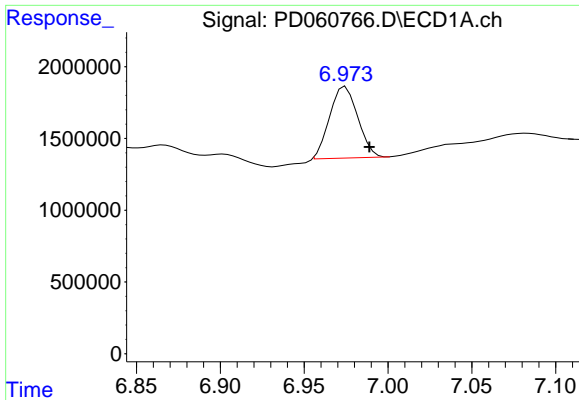
#19 Endosulfan Sulfate

R.T.: 6.729 min
Delta R.T.: 0.000 min
Response: 1994528
Conc: 1.66 ng/ml



#19 Endosulfan Sulfate

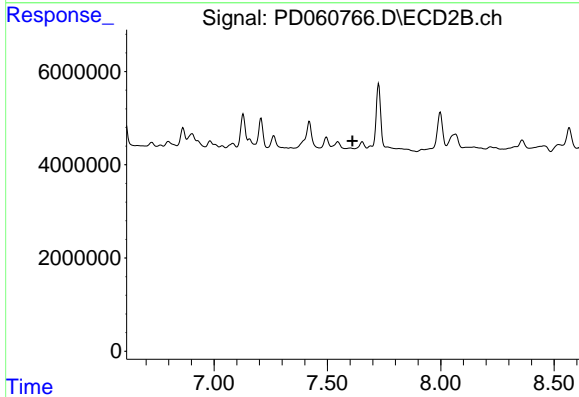
R.T.: 7.263 min
Delta R.T.: -0.027 min
Response: 3741185
Conc: 0.84 ng/ml



#20 Methoxychlor

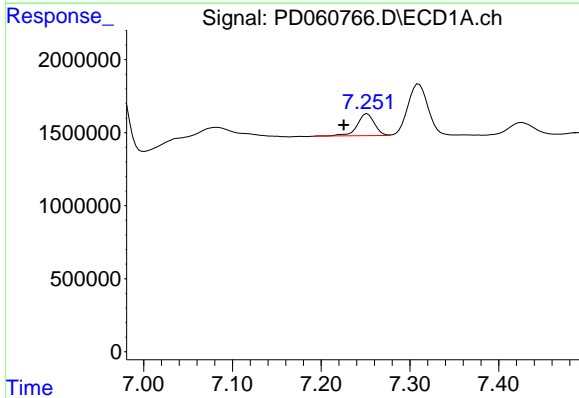
R.T.: 6.975 min
 Delta R.T.: -0.014 min
 Response: 5816178
 Conc: 7.47 ng/ml

Instrument :
 ECD_D
 ClientSampled :



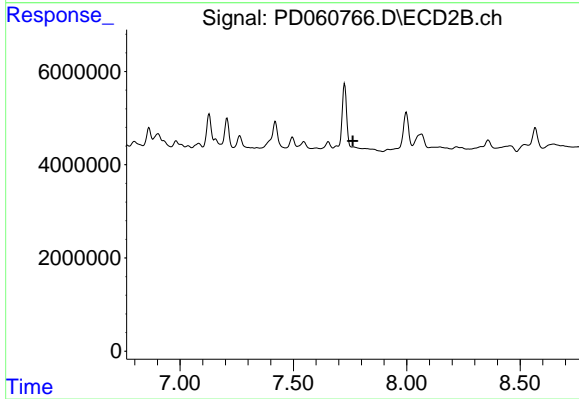
#20 Methoxychlor

R.T.: 0.000 min
 Exp R.T. : 7.611 min
 Response: 0
 Conc: N.D.



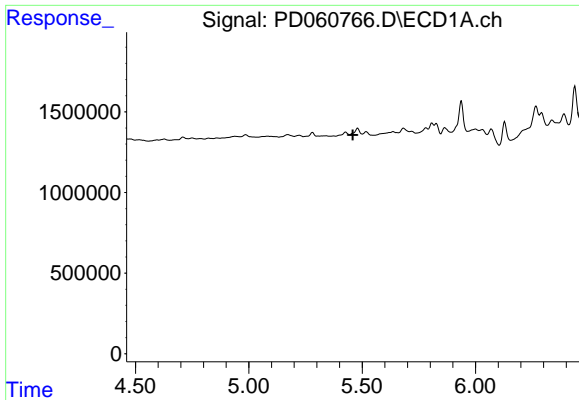
#21 Endrin ketone

R.T.: 7.252 min
 Delta R.T.: 0.027 min
 Response: 2022649
 Conc: 1.28 ng/ml



#21 Endrin ketone

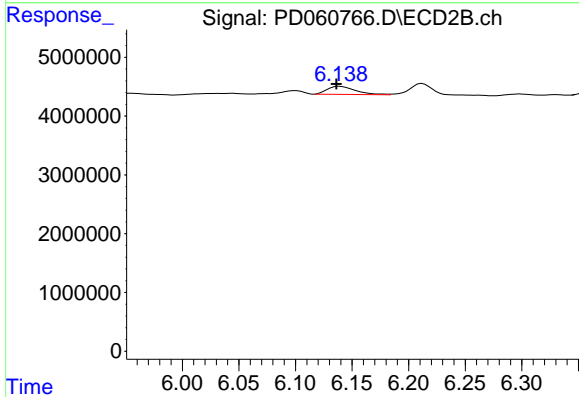
R.T.: 0.000 min
 Exp R.T. : 7.763 min
 Response: 0
 Conc: N.D.



#25 Chlordane-3

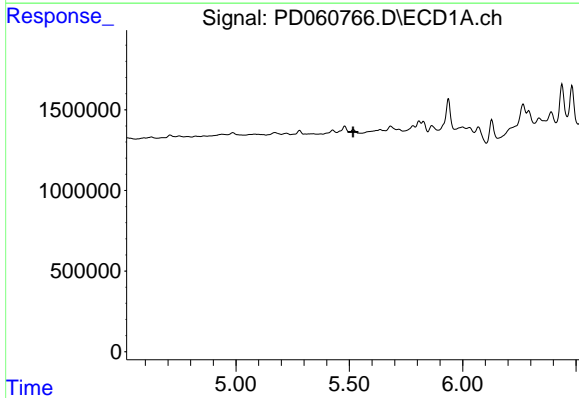
R.T.: 0.000 min
 Exp R.T. : 5.459 min
 Response: 0
 Conc: N.D.

Instrument :
 ECD_D
 ClientSampleId :



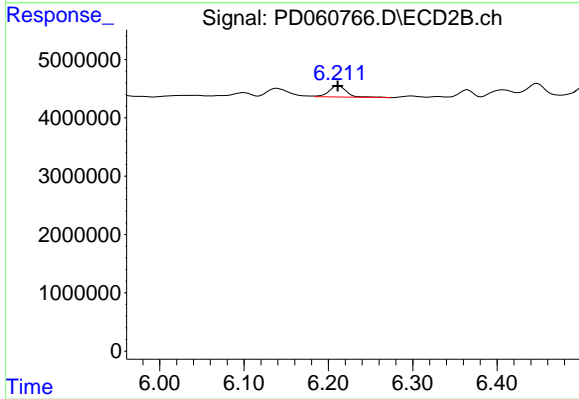
#25 Chlordane-3

R.T.: 6.139 min
 Delta R.T.: 0.003 min
 Response: 2386723
 Conc: 3.36 ng/ml



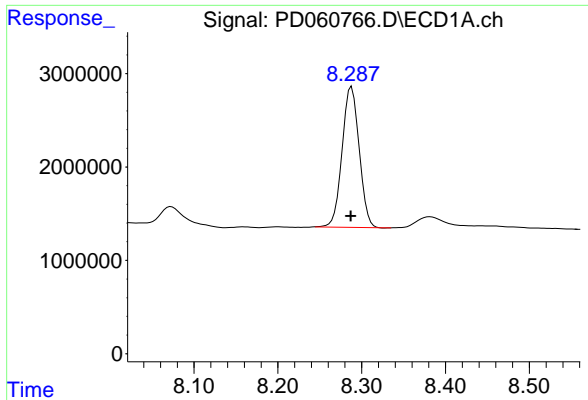
#26 Chlordane-4

R.T.: 0.000 min
 Exp R.T. : 5.517 min
 Response: 0
 Conc: N.D.



#26 Chlordane-4

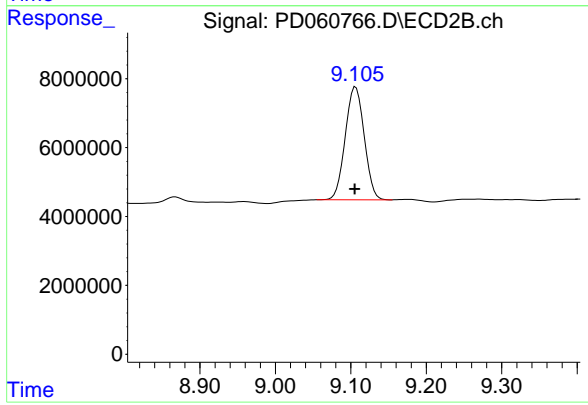
R.T.: 6.212 min
 Delta R.T.: 0.000 min
 Response: 2850165
 Conc: 3.44 ng/ml



#28 Decachlorobiphenyl

R.T.: 8.288 min
Delta R.T.: 0.001 min
Response: 21273918
Conc: 15.06 ng/ml

Instrument :
ECD_D
ClientSampleId :



#28 Decachlorobiphenyl

R.T.: 9.106 min
Delta R.T.: 0.001 min
Response: 57382930
Conc: 15.36 ng/ml