

Data Path : Z:\pestpcbsrv\HPCHEM1\ECD_D\Data\PD121919\
 Data File : PD056655.D
 Signal(s) : Signal #1: ECD1A.ch Signal #2: ECD2B.ch
 Acq On : 19 Dec 2019 22:58
 Operator : SG\AJ
 Sample : K6238-02MS
 Misc :
 ALS Vial : 42 Sample Multiplier: 1

Instrument :
 ECD_D
 ClientSampleId :
 BFPZ6MS

Integration File signal 1: autoint1.e
 Integration File signal 2: autoint2.e
 Quant Time: Dec 20 00:50:22 2019
 Quant Method : Z:\pestpcbsrv\HPCHEM1\ECD_D\Method\PD120219CLP.M
 Quant Title : GC Extractables
 QLast Update : Tue Dec 03 08:51:13 2019
 Response via : Initial Calibration
 Integrator: ChemStation

Volume Inj. : 1 µl
 Signal #1 Phase : ZB-MR2 Signal #2 Phase: ZB-MR1
 Signal #1 Info : 30M x 0.32mm x 0.2 Signal #2 Info : 30M x 0.32mm x 0.50µm

Compound	RT#1	RT#2	Resp#1	Resp#2	ng/ml	ng/ml

System Monitoring Compounds						
1) SA Tetrachlo...	3.286	3.960	4934052	9321621	5.958	7.753 #
27) SA Decachlor...	7.957	8.994	7824486	10048746	8.665	8.352
Target Compounds						
3) MA gamma-BHC...	3.988	4.630	40732737	72352777	36.273	44.833
4) MA Heptachlor	4.272	5.135	40121730	73335454	39.807	44.997
5) MB Aldrin	4.512	5.439	36583427	68769036	33.687	41.851
6) B beta-BHC	4.272f	0.000	40121730	0	74.543	N.D. #
7) B delta-BHC	0.000	4.987f	0	3446225	N.D.	2.069
8) B Heptachlor...	0.000	5.808	0	5048675	N.D.	3.259
9) A Endosulfan I	0.000	6.216	0	514203	N.D.	0.354
10) B trans-Chl...	0.000	6.047	0	6538979	N.D.	3.955
11) B cis-Chlor...	0.000	6.130	0	4924613	N.D.	3.056
12) B 4,4'-DDE	0.000	6.282	0	2966560	N.D.	1.889
13) MA Dieldrin	5.518	6.434	76818600	132.5E6	75.627	84.322
14) MA Endrin	5.771	6.651	65292572	111.6E6	78.130	88.178
15) B Endosulfa...	0.000	6.874	0	2193995	N.D.	1.497
16) A 4,4'-DDD	0.000	6.772	0	1274098	N.D.	1.083
17) MA 4,4'-DDT	6.140	7.071	55678889	100.0E6	79.130	84.616
18) B Endrin a...	0.000	6.984	0	702516	N.D.	0.578
19) B Endosulfa...	0.000	7.216	0	4349701	N.D.	3.253
20) A Methoxychlor	0.000	7.583f	0	3455971	N.D.	5.704
21) B Endrin ke...	0.000	7.673	0	1437602	N.D.	0.977
22) Toxaphene-1	5.518	6.282	76818600	2966560	8526.086	264.236 #
23) Toxaphene-2	0.000	6.651	0	111.6E6	N.D.	8086.547
24) Toxaphene-3	0.000	7.071	0	100.0E6	N.D.	5084.977
25) Toxaphene-4	6.140	7.071	55678889	100.0E6	2247.342	1811.605
26) Toxaphene-5	0.000	7.583	0	3455971	N.D.	135.215

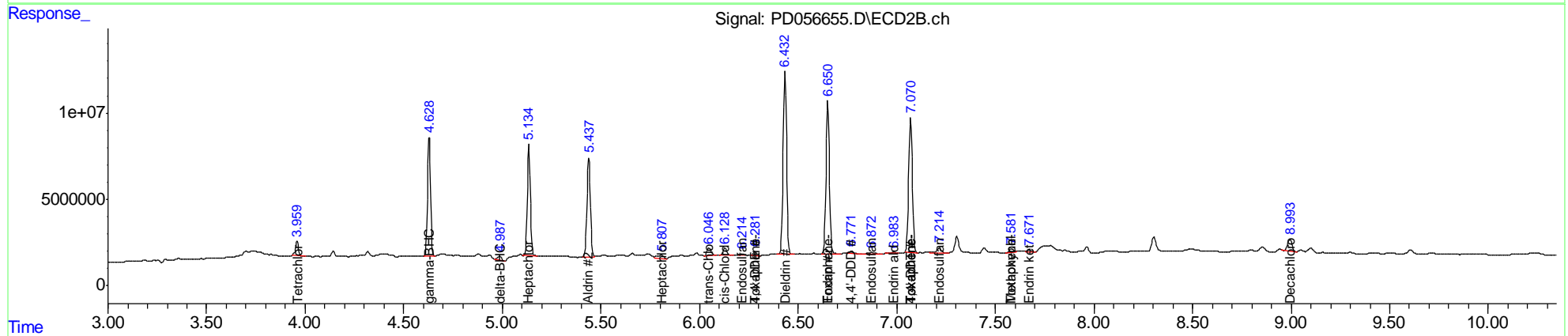
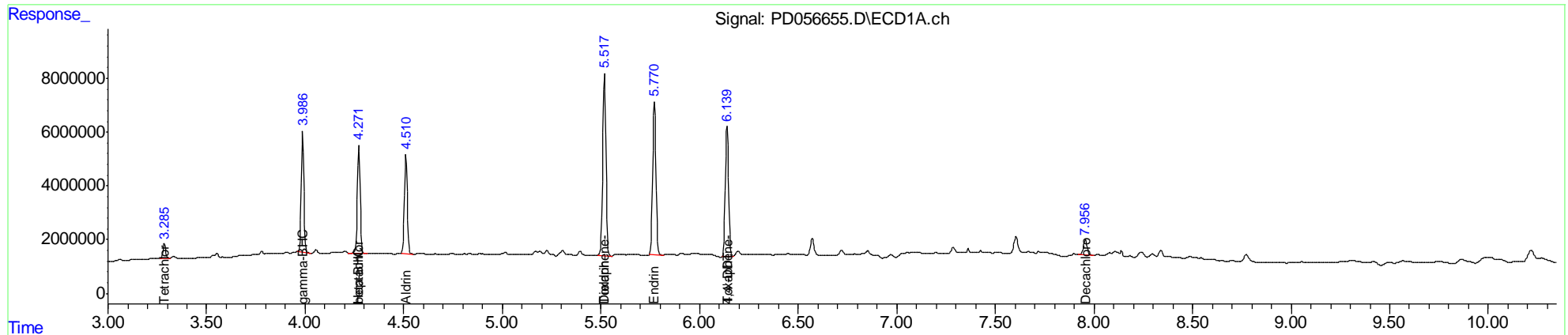
(f)=RT Delta > 1/2 Window (#)=Amounts differ by > 25% (m)=manual int.

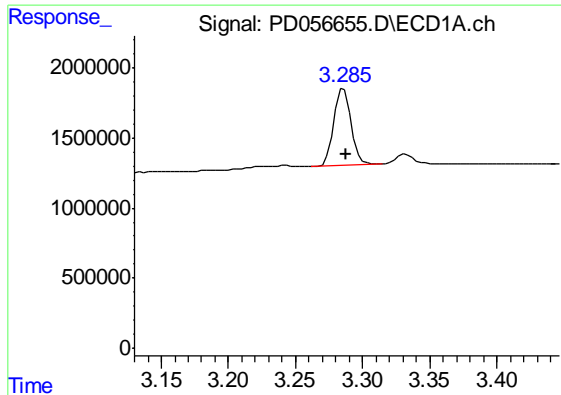
Data Path : Z:\pestpcbsrv\HPCHEM1\ECD_D\Data\PD121919\
 Data File : PD056655.D
 Signal(s) : Signal #1: ECD1A.ch Signal #2: ECD2B.ch
 Acq On : 19 Dec 2019 22:58
 Operator : SG\AJ
 Sample : K6238-02MS
 Misc :
 ALS Vial : 42 Sample Multiplier: 1

Instrument :
 ECD_D
 ClientSampleId :
 BFPZ6MS

Integration File signal 1: autoint1.e
 Integration File signal 2: autoint2.e
 Quant Time: Dec 20 00:50:22 2019
 Quant Method : Z:\pestpcbsrv\HPCHEM1\ECD_D\Method\PD120219CLP.M
 Quant Title : GC Extractables
 QLast Update : Tue Dec 03 08:51:13 2019
 Response via : Initial Calibration
 Integrator: ChemStation

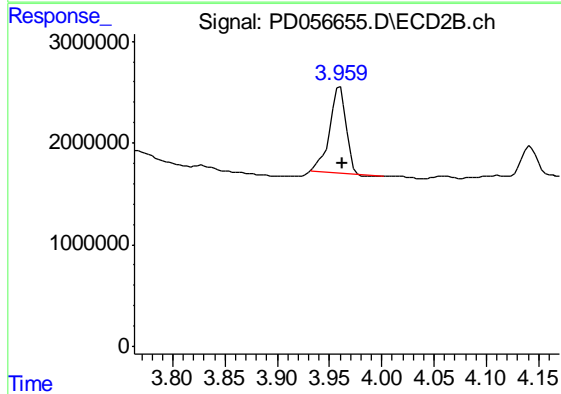
Volume Inj. : 1 µl
 Signal #1 Phase : ZB-MR2 Signal #2 Phase: ZB-MR1
 Signal #1 Info : 30M x 0.32mm x0.2 Signal #2 Info : 30M x 0.32mm x 0.50µm



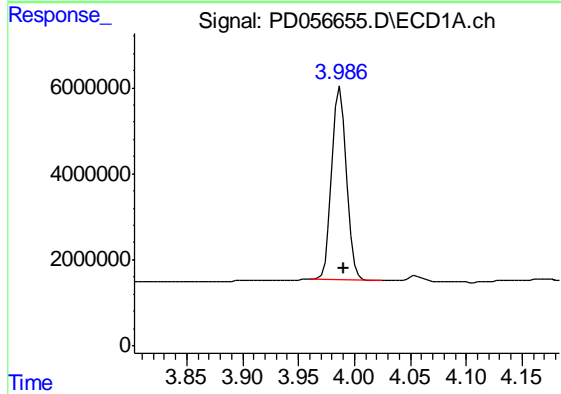


#1 Tetrachloro-m-xylene
 R.T.: 3.286 min
 Delta R.T.: -0.002 min
 Response: 4934052
 Conc: 5.96 ng/ml

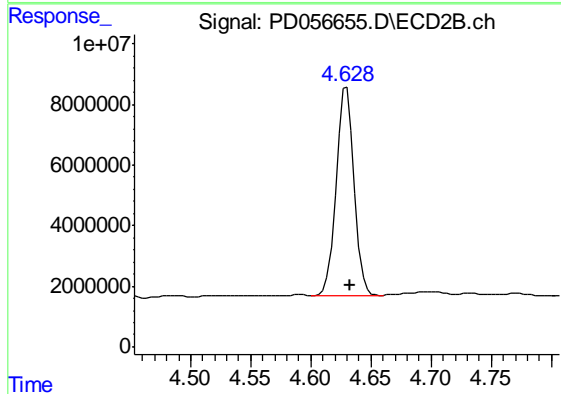
Instrument :
 ECD_D
 ClientSampleId :
 BFPZ6MS



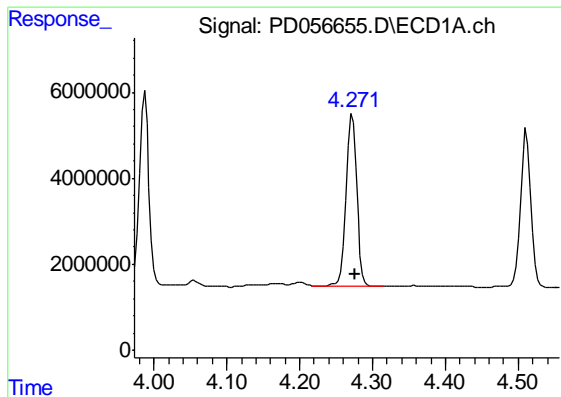
#1 Tetrachloro-m-xylene
 R.T.: 3.960 min
 Delta R.T.: -0.003 min
 Response: 9321621
 Conc: 7.75 ng/ml



#3 gamma-BHC (Lindane)
 R.T.: 3.988 min
 Delta R.T.: -0.003 min
 Response: 40732737
 Conc: 36.27 ng/ml



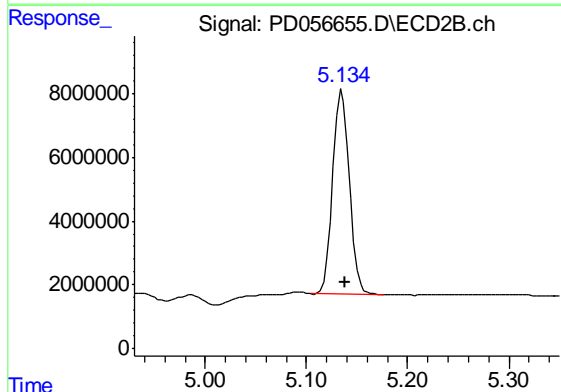
#3 gamma-BHC (Lindane)
 R.T.: 4.630 min
 Delta R.T.: -0.002 min
 Response: 72352777
 Conc: 44.83 ng/ml



#4 Heptachlor

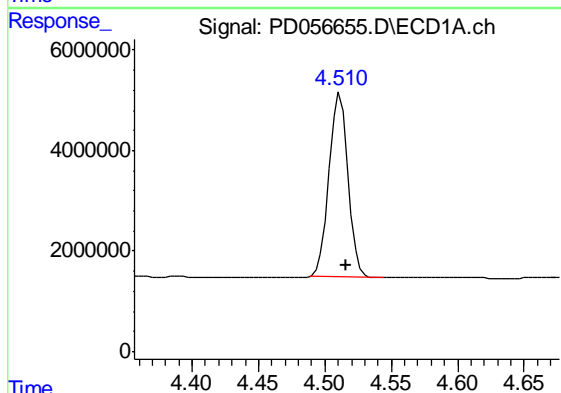
R.T.: 4.272 min
Delta R.T.: -0.004 min
Response: 40121730
Conc: 39.81 ng/ml

Instrument :
ECD_D
ClientSampleId :
BFPZ6MS



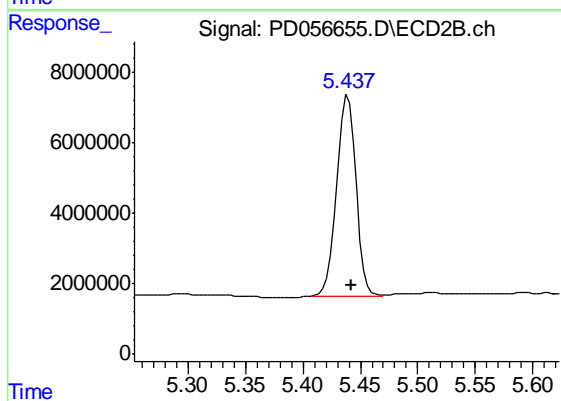
#4 Heptachlor

R.T.: 5.135 min
Delta R.T.: -0.003 min
Response: 73335454
Conc: 45.00 ng/ml



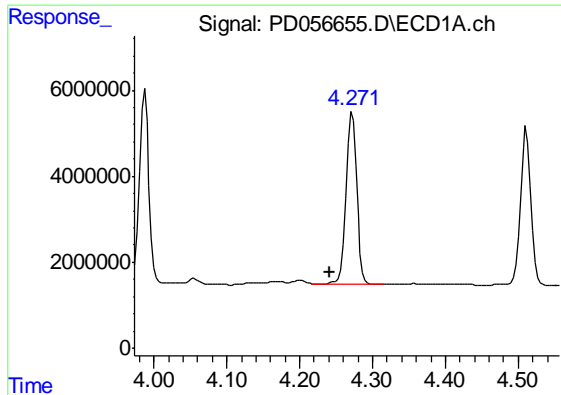
#5 Aldrin

R.T.: 4.512 min
Delta R.T.: -0.004 min
Response: 36583427
Conc: 33.69 ng/ml



#5 Aldrin

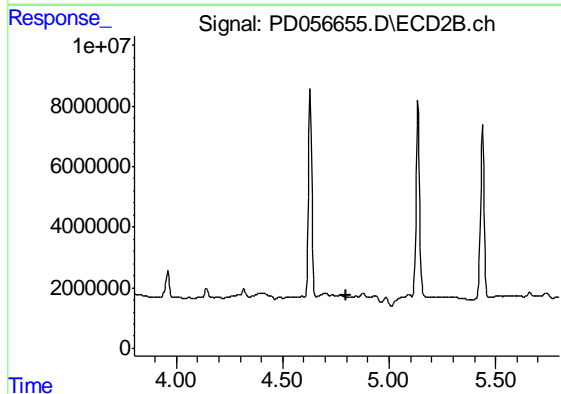
R.T.: 5.439 min
Delta R.T.: -0.004 min
Response: 68769036
Conc: 41.85 ng/ml



#6 beta-BHC

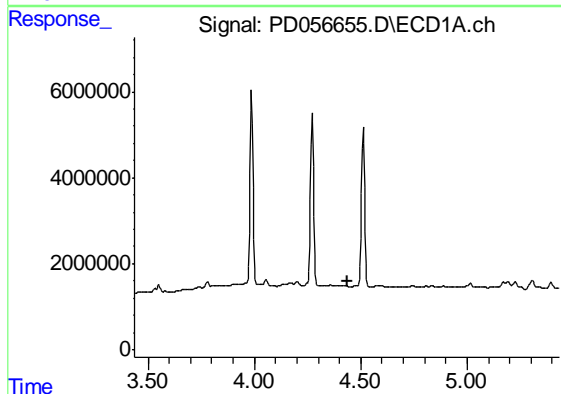
R.T.: 4.272 min
 Delta R.T.: 0.032 min
 Response: 40121730
 Conc: 74.54 ng/ml

Instrument :
 ECD_D
 ClientSampleId :
 BFPZ6MS



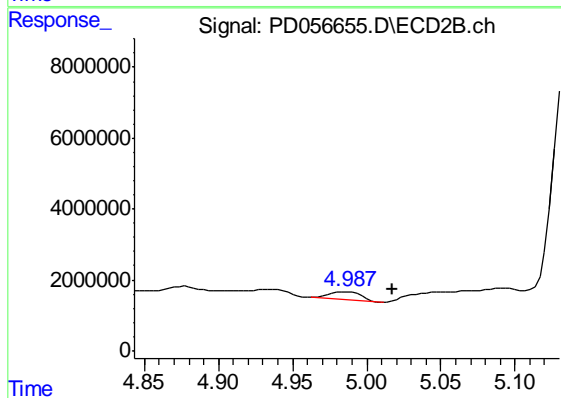
#6 beta-BHC

R.T.: 0.000 min
 Exp R.T. : 4.801 min
 Response: 0
 Conc: N.D.



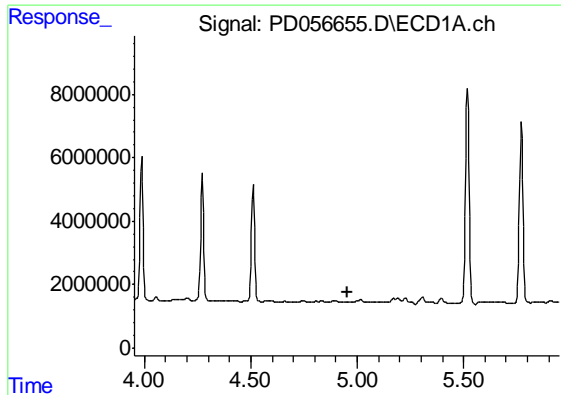
#7 delta-BHC

R.T.: 0.000 min
 Exp R.T. : 4.436 min
 Response: 0
 Conc: N.D.



#7 delta-BHC

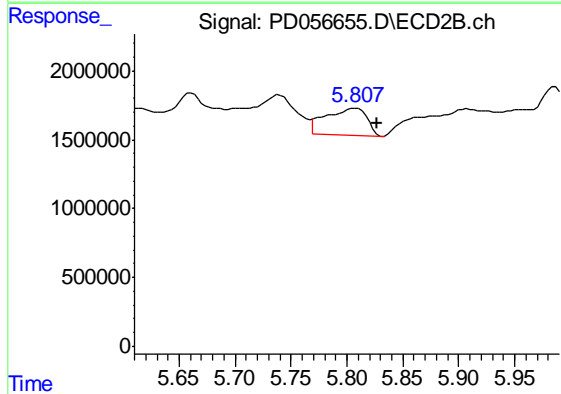
R.T.: 4.987 min
 Delta R.T.: -0.030 min
 Response: 3446225
 Conc: 2.07 ng/ml



#8 Heptachlor epoxide

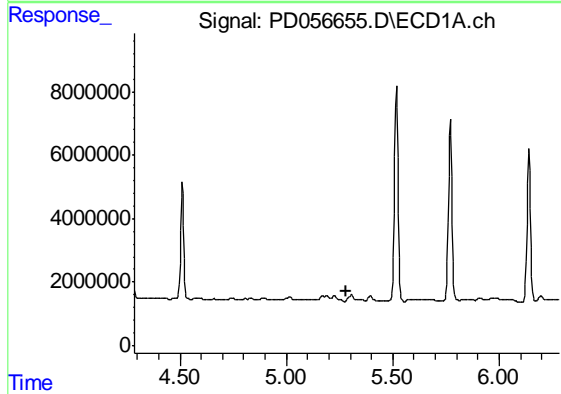
R.T.: 0.000 min
 Exp R.T. : 4.953 min
 Response: 0
 Conc: N.D.

Instrument :
 ECD_D
 ClientSampleId :
 BFPZ6MS



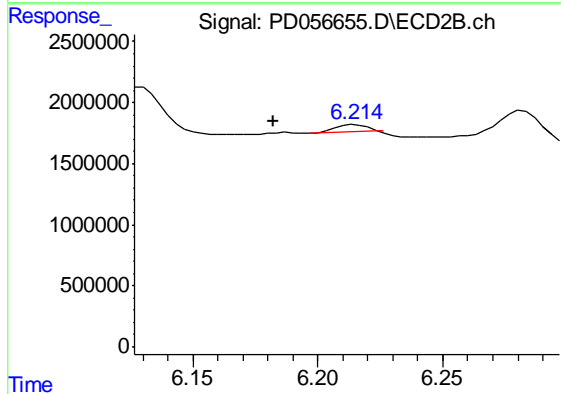
#8 Heptachlor epoxide

R.T.: 5.808 min
 Delta R.T.: -0.018 min
 Response: 5048675
 Conc: 3.26 ng/ml



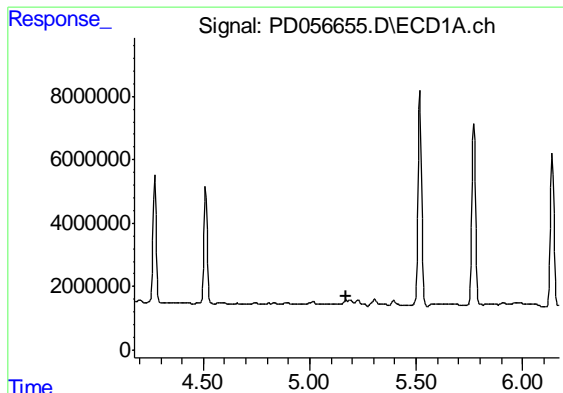
#9 Endosulfan I

R.T.: 0.000 min
 Exp R.T. : 5.284 min
 Response: 0
 Conc: N.D.



#9 Endosulfan I

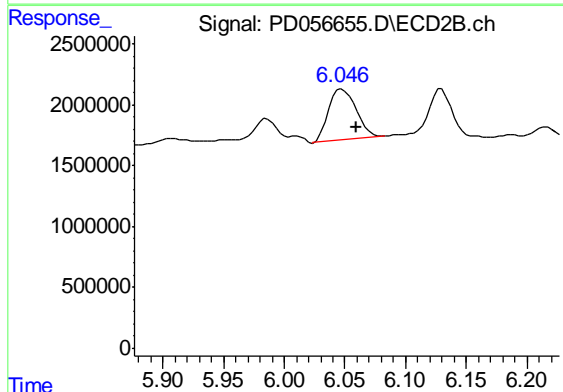
R.T.: 6.216 min
 Delta R.T.: 0.034 min
 Response: 514203
 Conc: 0.35 ng/ml



#10 trans-Chlordane

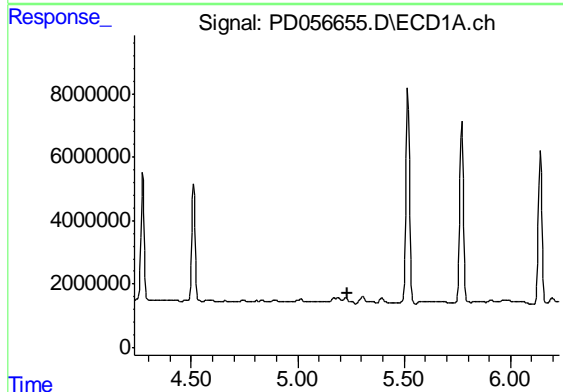
R.T.: 0.000 min
 Exp R.T. : 5.175 min
 Response: 0
 Conc: N.D.

Instrument :
 ECD_D
 ClientSampleId :
 BFPZ6MS



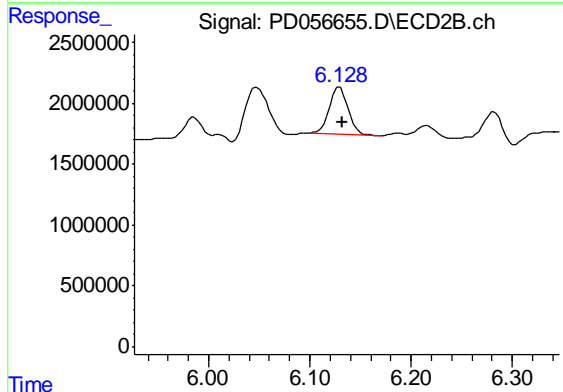
#10 trans-Chlordane

R.T.: 6.047 min
 Delta R.T.: -0.013 min
 Response: 6538979
 Conc: 3.95 ng/ml



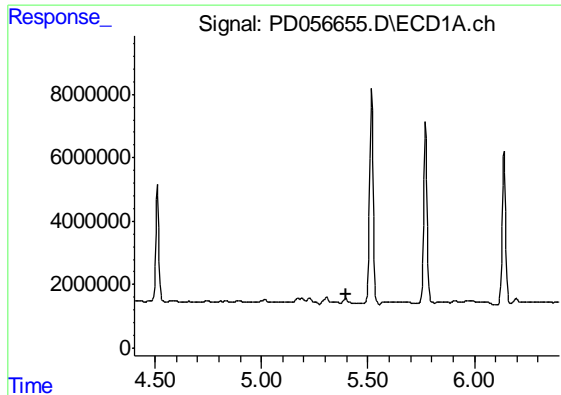
#11 cis-Chlordane

R.T.: 0.000 min
 Exp R.T. : 5.232 min
 Response: 0
 Conc: N.D.



#11 cis-Chlordane

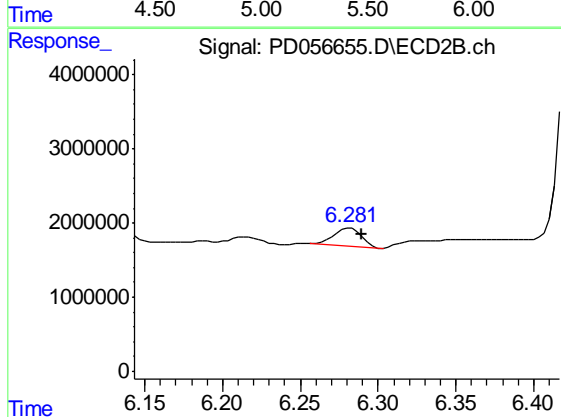
R.T.: 6.130 min
 Delta R.T.: -0.003 min
 Response: 4924613
 Conc: 3.06 ng/ml



#12 4,4'-DDE

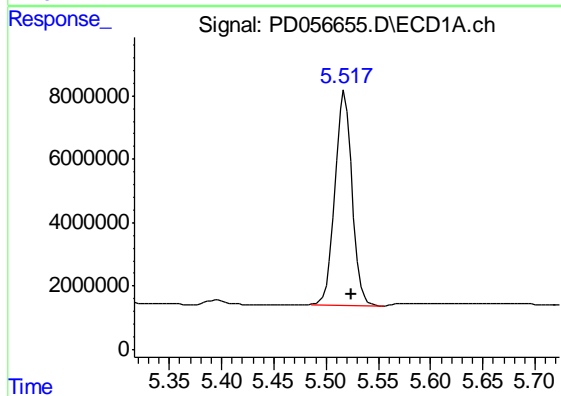
R.T.: 0.000 min
 Exp R.T. : 5.401 min
 Response: 0
 Conc: N.D.

Instrument :
 ECD_D
 ClientSampled :
 BFPZ6MS



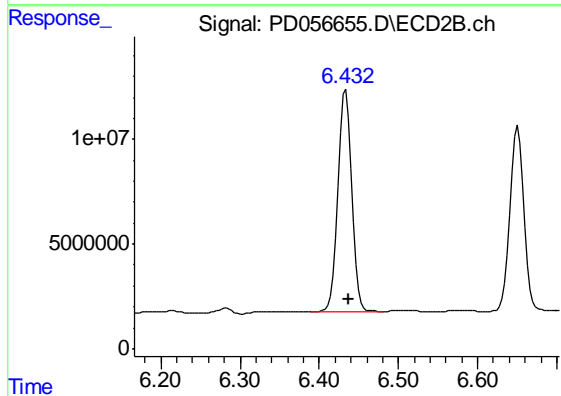
#12 4,4'-DDE

R.T.: 6.282 min
 Delta R.T.: -0.007 min
 Response: 2966560
 Conc: 1.89 ng/ml



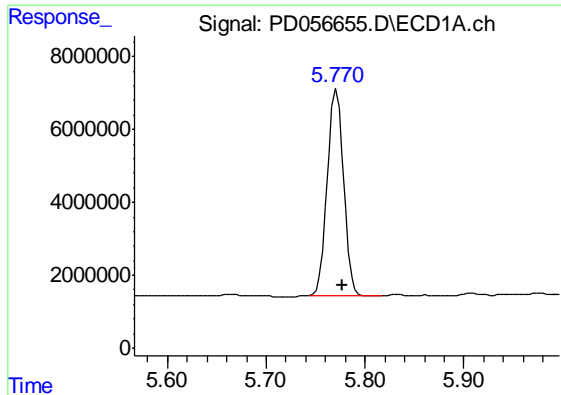
#13 Dieldrin

R.T.: 5.518 min
 Delta R.T.: -0.006 min
 Response: 76818600
 Conc: 75.63 ng/ml



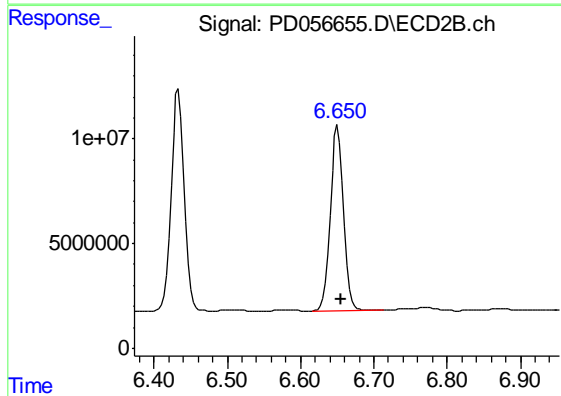
#13 Dieldrin

R.T.: 6.434 min
 Delta R.T.: -0.005 min
 Response: 132505406
 Conc: 84.32 ng/ml

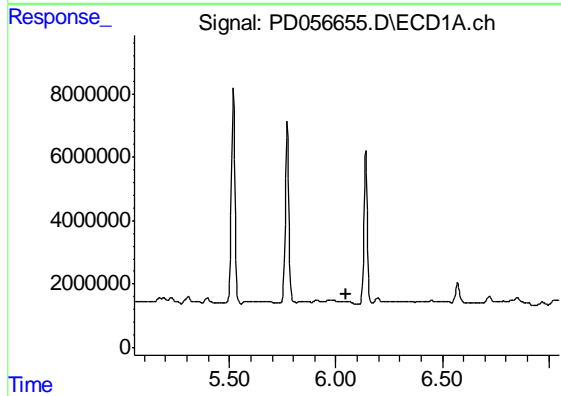


#14 Endrin
 R.T.: 5.771 min
 Delta R.T.: -0.006 min
 Response: 65292572
 Conc: 78.13 ng/ml

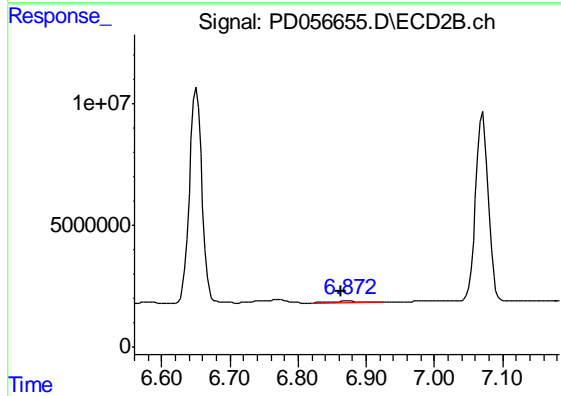
Instrument :
 ECD_D
 ClientSampleId :
 BFPZ6MS



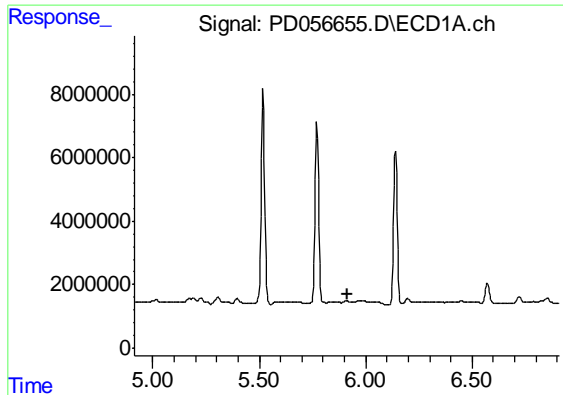
#14 Endrin
 R.T.: 6.651 min
 Delta R.T.: -0.004 min
 Response: 111597210
 Conc: 88.18 ng/ml



#15 Endosulfan II
 R.T.: 0.000 min
 Exp R.T. : 6.051 min
 Response: 0
 Conc: N.D.



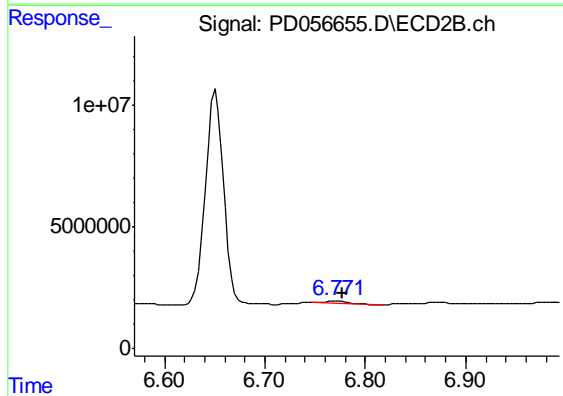
#15 Endosulfan II
 R.T.: 6.874 min
 Delta R.T.: 0.010 min
 Response: 2193995
 Conc: 1.50 ng/ml



#16 4,4'-DDD

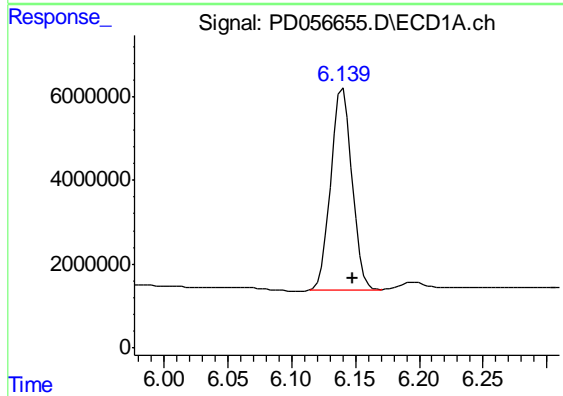
R.T.: 0.000 min
 Exp R.T. : 5.912 min
 Response: 0
 Conc: N.D.

Instrument :
 ECD_D
 ClientSampleId :
 BFPZ6MS



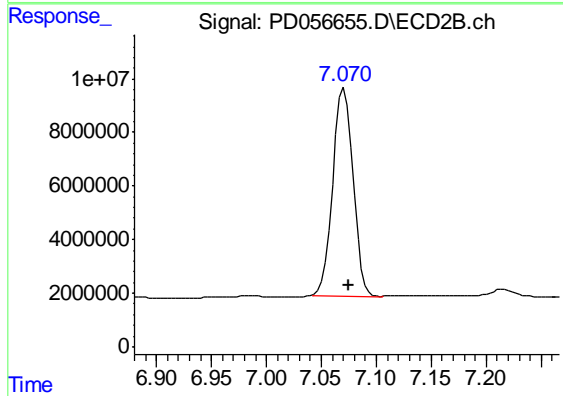
#16 4,4'-DDD

R.T.: 6.772 min
 Delta R.T.: -0.006 min
 Response: 1274098
 Conc: 1.08 ng/ml



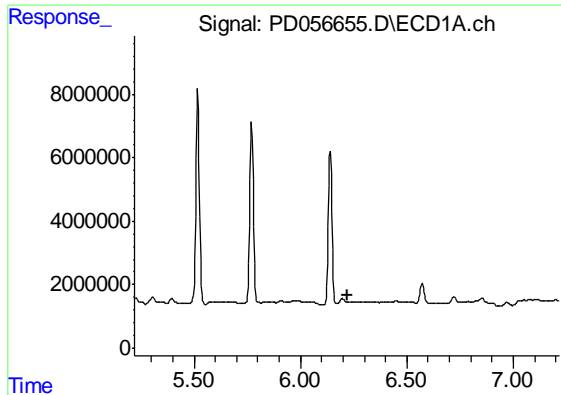
#17 4,4'-DDT

R.T.: 6.140 min
 Delta R.T.: -0.007 min
 Response: 55678889
 Conc: 79.13 ng/ml



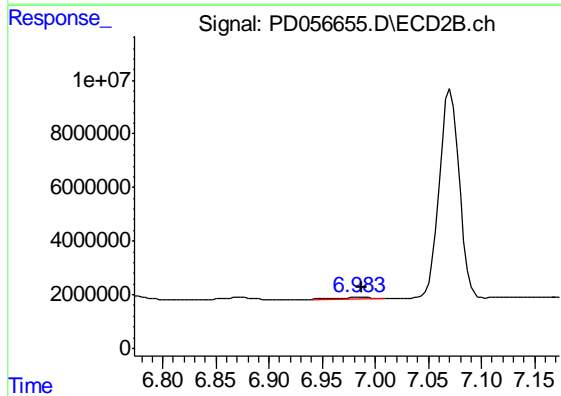
#17 4,4'-DDT

R.T.: 7.071 min
 Delta R.T.: -0.005 min
 Response: 100028472
 Conc: 84.62 ng/ml

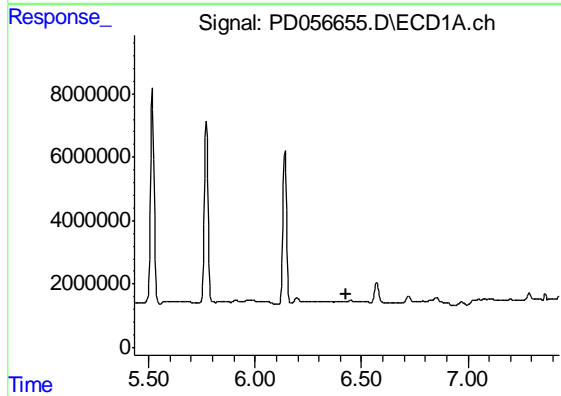


#18 Endrin aldehyde
 R.T.: 0.000 min
 Exp R.T. : 6.219 min
 Response: 0
 Conc: N.D.

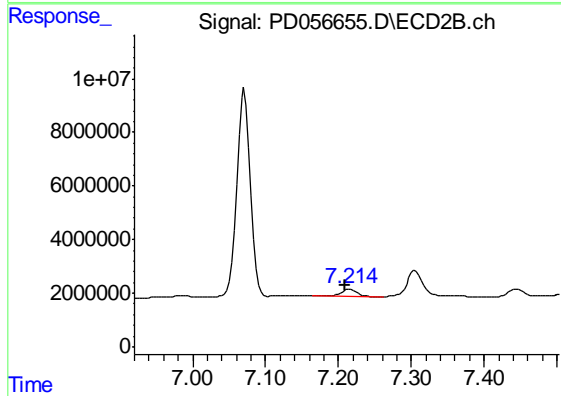
Instrument :
 ECD_D
 ClientSampleId :
 BFPZ6MS



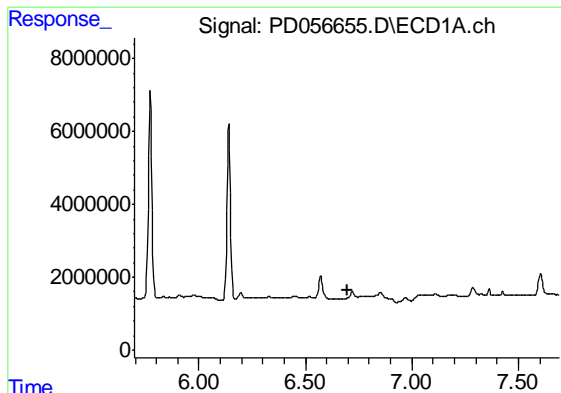
#18 Endrin aldehyde
 R.T.: 6.984 min
 Delta R.T.: -0.003 min
 Response: 702516
 Conc: 0.58 ng/ml



#19 Endosulfan Sulfate
 R.T.: 0.000 min
 Exp R.T. : 6.430 min
 Response: 0
 Conc: N.D.



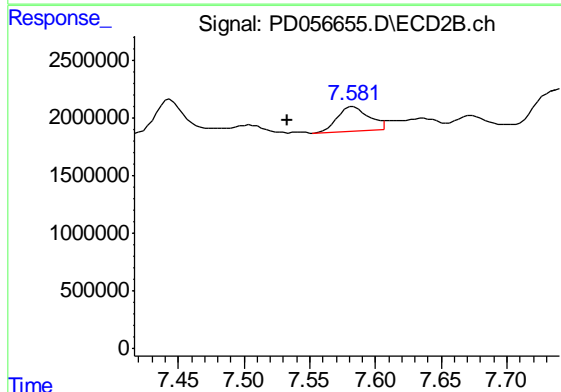
#19 Endosulfan Sulfate
 R.T.: 7.216 min
 Delta R.T.: 0.006 min
 Response: 4349701
 Conc: 3.25 ng/ml



#20 Methoxychlor

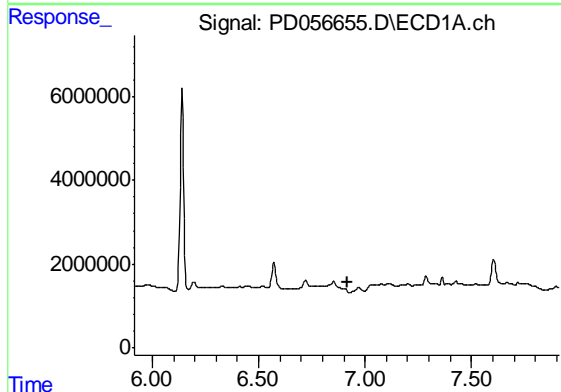
R.T.: 0.000 min
 Exp R.T. : 6.696 min
 Response: 0
 Conc: N.D.

Instrument :
 ECD_D
 ClientSampleId :
 BFPZ6MS



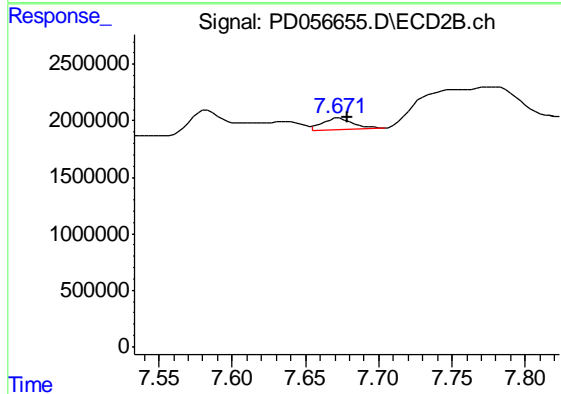
#20 Methoxychlor

R.T.: 7.583 min
 Delta R.T.: 0.050 min
 Response: 3455971
 Conc: 5.70 ng/ml



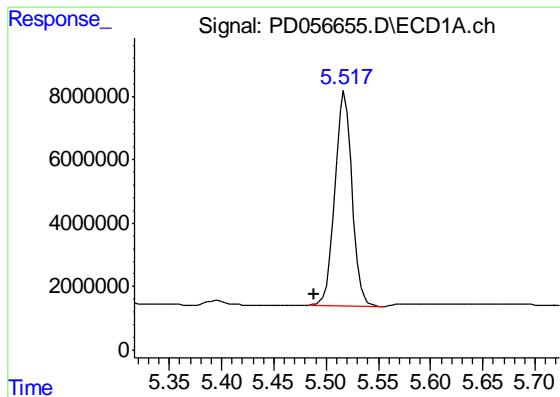
#21 Endrin ketone

R.T.: 0.000 min
 Exp R.T. : 6.915 min
 Response: 0
 Conc: N.D.



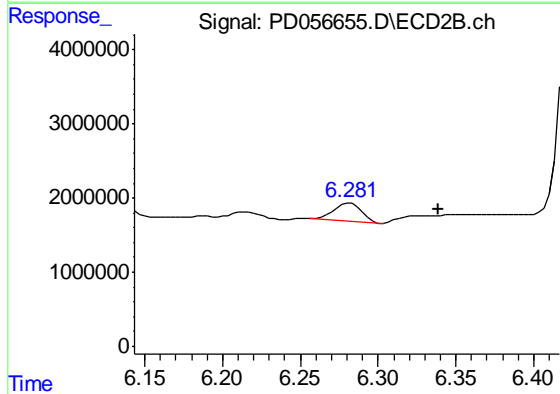
#21 Endrin ketone

R.T.: 7.673 min
 Delta R.T.: -0.006 min
 Response: 1437602
 Conc: 0.98 ng/ml

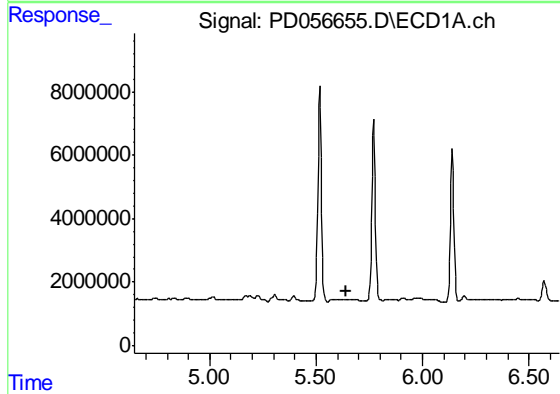


#22 Toxaphene-1
 R.T.: 5.518 min
 Delta R.T.: 0.029 min
 Response: 76818600
 Conc: 8526.09 ng/ml

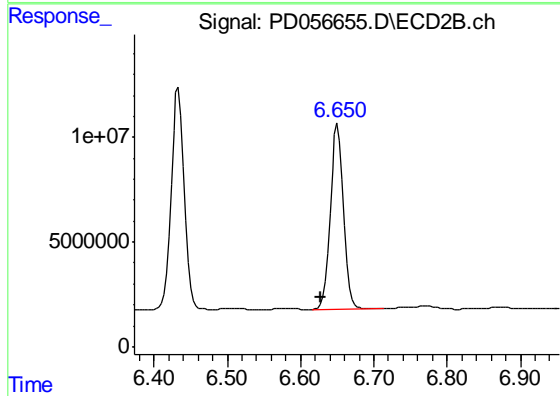
Instrument :
 ECD_D
 ClientSampleId :
 BFPZ6MS



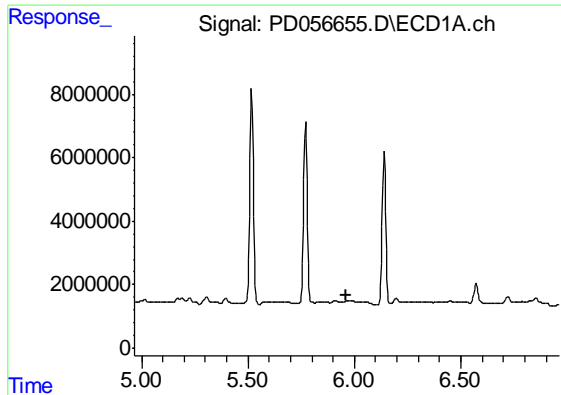
#22 Toxaphene-1
 R.T.: 6.282 min
 Delta R.T.: -0.057 min
 Response: 2966560
 Conc: 264.24 ng/ml



#23 Toxaphene-2
 R.T.: 0.000 min
 Exp R.T. : 5.644 min
 Response: 0
 Conc: N.D.



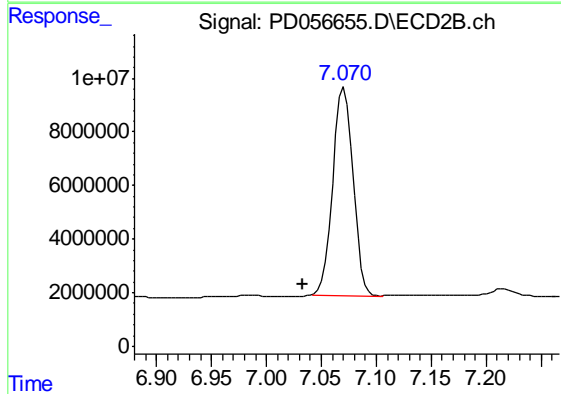
#23 Toxaphene-2
 R.T.: 6.651 min
 Delta R.T.: 0.023 min
 Response: 111597210
 Conc: 8086.55 ng/ml



#24 Toxaphene-3

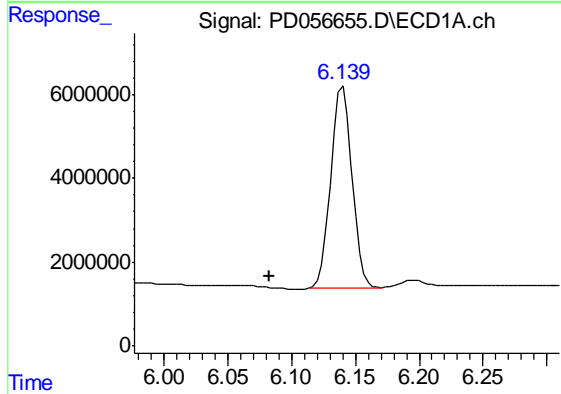
R.T.: 0.000 min
 Exp R.T. : 5.965 min
 Response: 0
 Conc: N.D.

Instrument :
 ECD_D
 ClientSampleId :
 BFPZ6MS



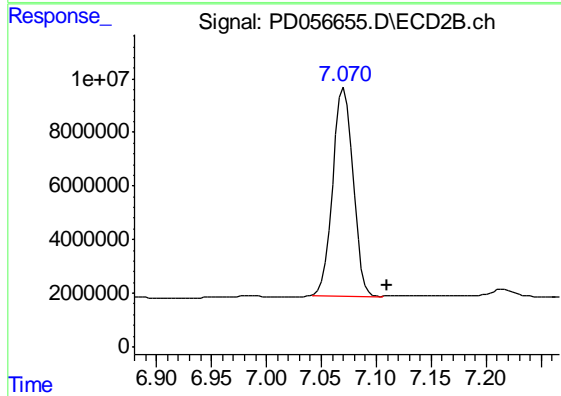
#24 Toxaphene-3

R.T.: 7.071 min
 Delta R.T.: 0.038 min
 Response: 100028472
 Conc: 5084.98 ng/ml



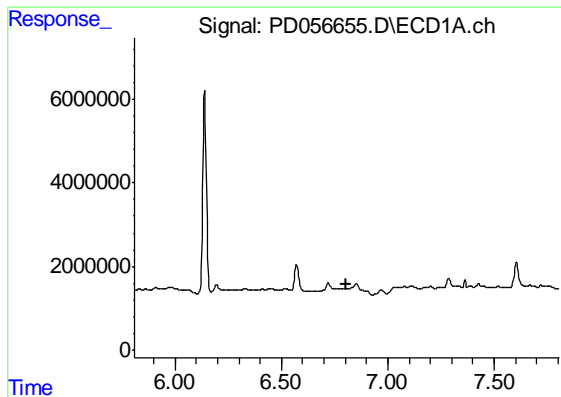
#25 Toxaphene-4

R.T.: 6.140 min
 Delta R.T.: 0.058 min
 Response: 55678889
 Conc: 2247.34 ng/ml



#25 Toxaphene-4

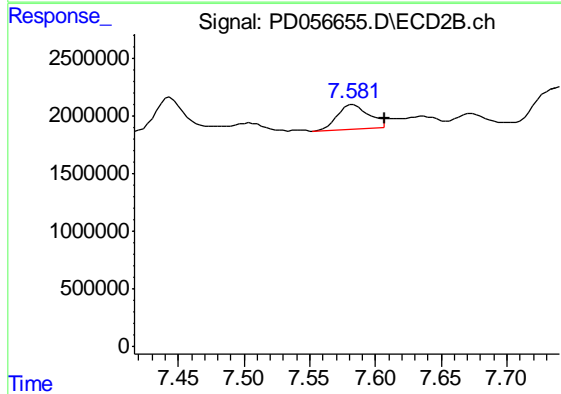
R.T.: 7.071 min
 Delta R.T.: -0.039 min
 Response: 100028472
 Conc: 1811.60 ng/ml



#26 Toxaphene-5

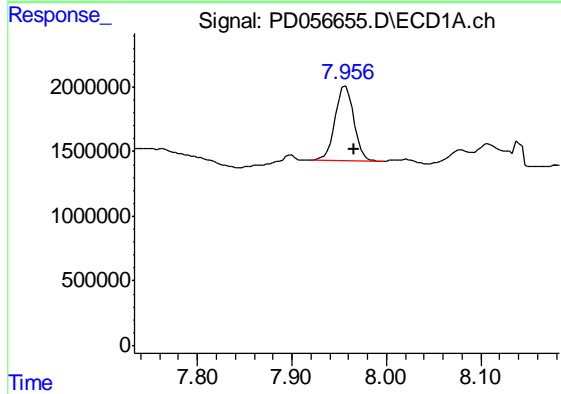
R.T.: 0.000 min
 Exp R.T. : 6.808 min
 Response: 0
 Conc: N.D.

Instrument :
 ECD_D
 ClientSampleId :
 BFPZ6MS



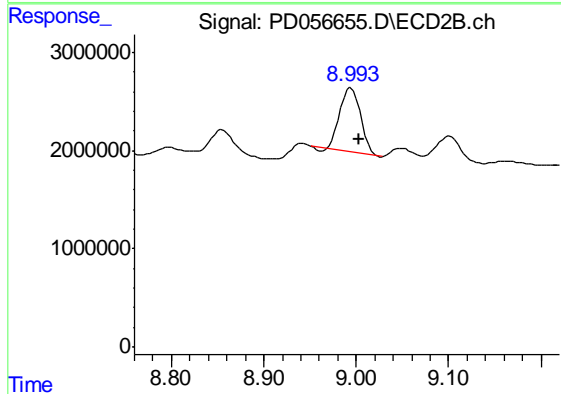
#26 Toxaphene-5

R.T.: 7.583 min
 Delta R.T.: -0.025 min
 Response: 3455971
 Conc: 135.22 ng/ml



#27 Decachlorobiphenyl

R.T.: 7.957 min
 Delta R.T.: -0.008 min
 Response: 7824486
 Conc: 8.67 ng/ml



#27 Decachlorobiphenyl

R.T.: 8.994 min
 Delta R.T.: -0.008 min
 Response: 10048746
 Conc: 8.35 ng/ml