

Data Path : Z:\pestpcbsrv\HPCHEM1\ECD_D\Data\PD121922\
 Data File : PD073351.D
 Signal(s) : Signal #1: ECD1A.ch Signal #2: ECD2B.ch
 Acq On : 19 Dec 2022 09:28
 Operator : AR\AJ
 Sample : PEM
 Misc :
 ALS Vial : 3 Sample Multiplier: 1

Instrument :
 ECD_D
 ClientSampleId :

Integration File signal 1: autoint1.e
 Integration File signal 2: autoint2.e
 Quant Time: Dec 19 20:16:30 2022
 Quant Method : Z:\pestpcbsrv\HPCHEM1\ECD_D\Method\PD121622.M
 Quant Title : GC Extractables
 QLast Update : Fri Dec 16 15:46:21 2022
 Response via : Initial Calibration
 Integrator: ChemStation

Volume Inj. : 2 µl
 Signal #1 Phase : ZB-MR2 Signal #2 Phase: ZB-MR1
 Signal #1 Info : 30M x 0.32mm x0.2 Signal #2 Info : 30M x 0.32mm x 0.50µm

Compound	RT#1	RT#2	Resp#1	Resp#2	ng/ml	ng/ml

System Monitoring Compounds						
1) SA Tetrachlo...	2.696	3.457	44311081	1974.0E6	21.143	20.072
28) SA Decachlor...	7.823	8.906	51002277	401.3E6	21.065	22.768
Target Compounds						
2) A alpha-BHC	3.199	3.921	34339007	1393.8E6	9.928	10.428
3) MA gamma-BHC...	3.529	4.254	31416190	1062.6E6	11.425	10.769
4) MA Heptachlor	3.831f	4.809	15652244	3820226	5.003	0.060 #
6) B beta-BHC	3.831	4.470	15652244	393.1E6	12.326	11.602
7) B delta-BHC	0.000	4.703	0	576536	N.D.	0.009 #
11) B alpha-Chl...	0.000	5.913	0	17651819	N.D.	0.403 #
12) B 4,4'-DDE	0.000	6.100	0	11698741	N.D.	0.277 #
14) MA Endrin	5.555	6.484	128.3E6	1720.1E6	49.960	52.356
15) B Endosulfa...	5.868	6.706	304646	37841893	0.129	1.191 #
16) A 4,4'-DDD	5.703	6.619	1013975	28849693	0.450	0.923 #
17) MA 4,4'-DDT	5.951	6.925	237.4E6	3054.5E6	107.157	101.077
18) B Endrin al...	6.035	6.845	3209839	45981627	1.705	1.961
20) A Methoxychlor	6.533	7.405	321.8E6	3239.3E6	241.443	239.324
21) B Endrin ke...	6.767	7.567	7353469	72658201	2.706	2.646
26) Chlordane-4	0.000	5.913	0	17651819	N.D.	2.425 #
27) Chlordane-5	5.868	0.000	304646	0	3.376	N.D. #

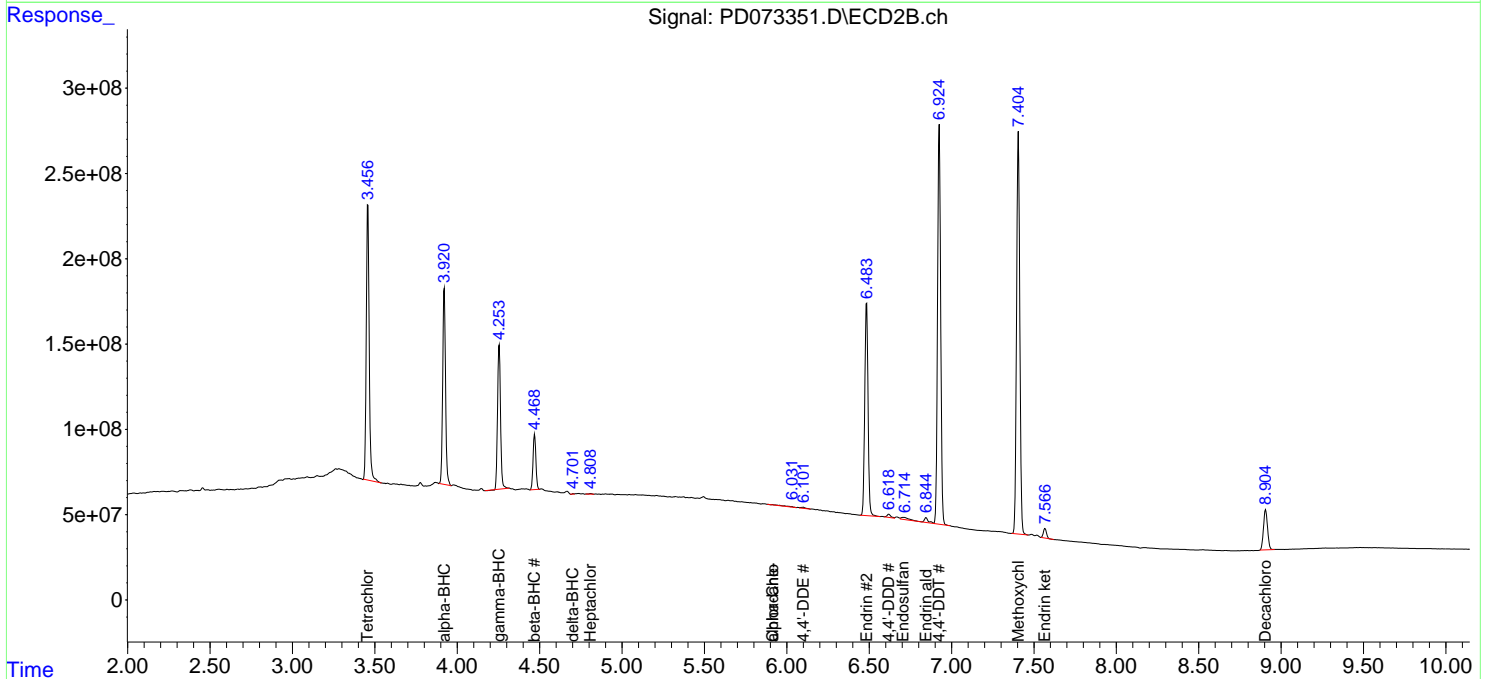
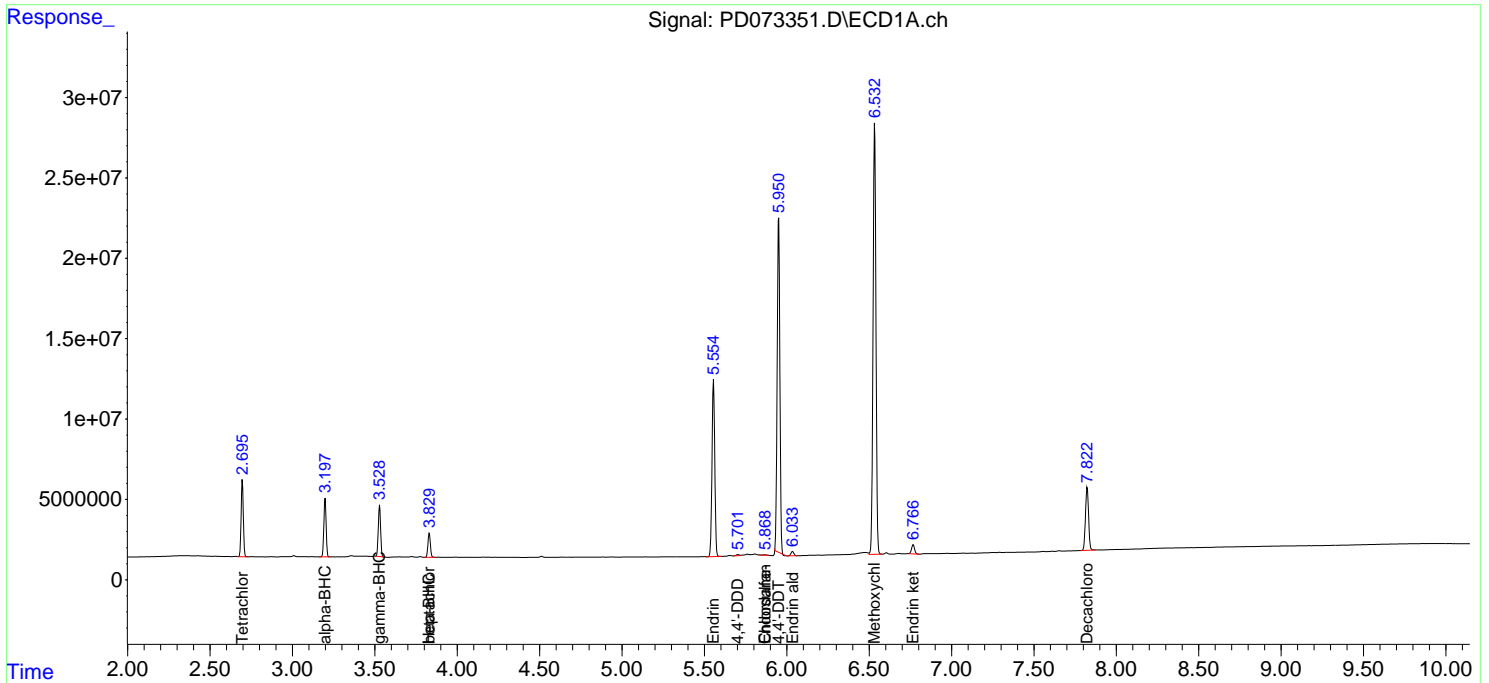
(f)=RT Delta > 1/2 Window (#)=Amounts differ by > 25% (m)=manual int.

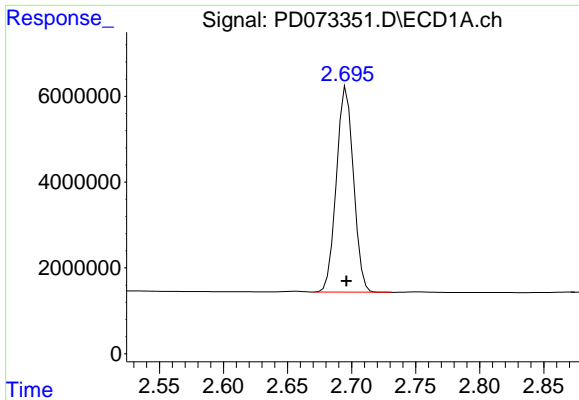
Data Path : Z:\pestpcbsrv\HPCHEM1\ECD_D\Data\PD121922\
 Data File : PD073351.D
 Signal(s) : Signal #1: ECD1A.ch Signal #2: ECD2B.ch
 Acq On : 19 Dec 2022 09:28
 Operator : AR\AJ
 Sample : PEM
 Misc :
 ALS Vial : 3 Sample Multiplier: 1

Instrument :
 ECD_D
 ClientSampleId :

Integration File signal 1: autoint1.e
 Integration File signal 2: autoint2.e
 Quant Time: Dec 19 20:16:30 2022
 Quant Method : Z:\pestpcbsrv\HPCHEM1\ECD_D\Method\PD121622.M
 Quant Title : GC Extractables
 QLast Update : Fri Dec 16 15:46:21 2022
 Response via : Initial Calibration
 Integrator: ChemStation

Volume Inj. : 2 µl
 Signal #1 Phase : ZB-MR2 Signal #2 Phase: ZB-MR1
 Signal #1 Info : 30M x 0.32mm x0.2 Signal #2 Info : 30M x 0.32mm x 0.50µm

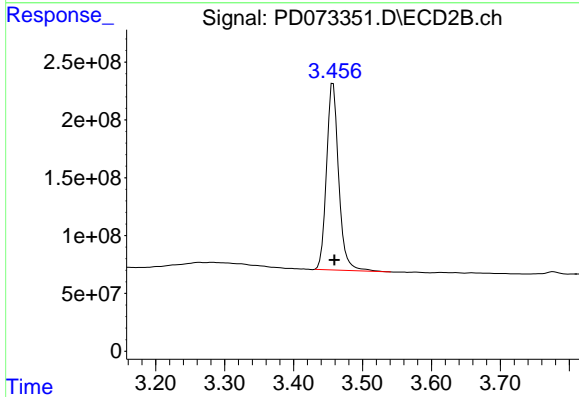




#1 Tetrachloro-m-xylene

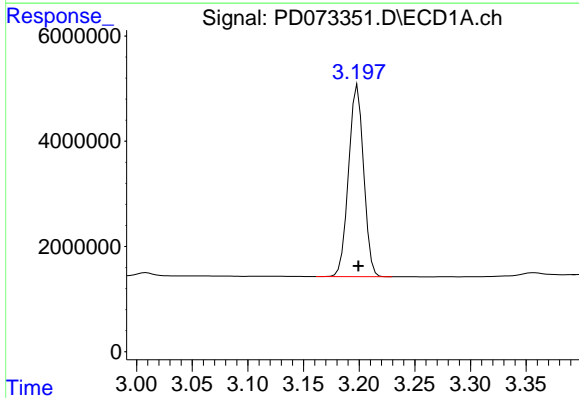
R.T.: 2.696 min
 Delta R.T.: 0.000 min
 Response: 44311081
 Conc: 21.14 ng/ml

Instrument :
 ECD_D
 ClientSampleId :



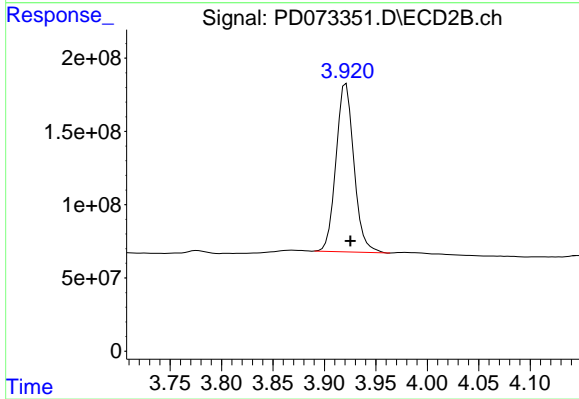
#1 Tetrachloro-m-xylene

R.T.: 3.457 min
 Delta R.T.: -0.002 min
 Response: 1974033141
 Conc: 20.07 ng/ml



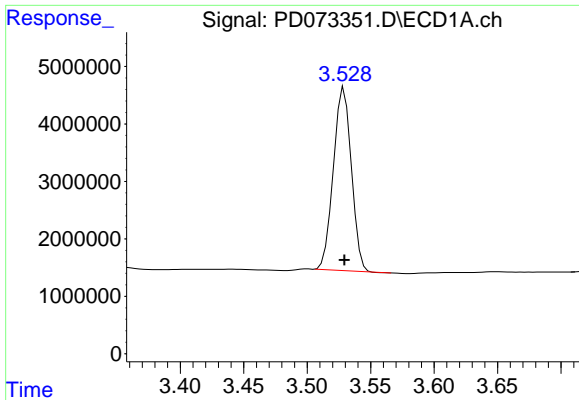
#2 alpha-BHC

R.T.: 3.199 min
 Delta R.T.: 0.000 min
 Response: 34339007
 Conc: 9.93 ng/ml



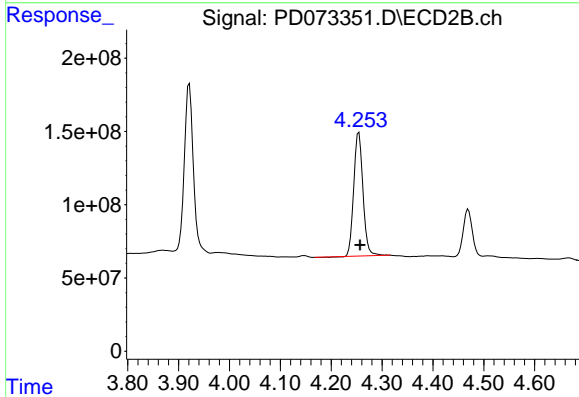
#2 alpha-BHC

R.T.: 3.921 min
 Delta R.T.: -0.004 min
 Response: 1393789061
 Conc: 10.43 ng/ml

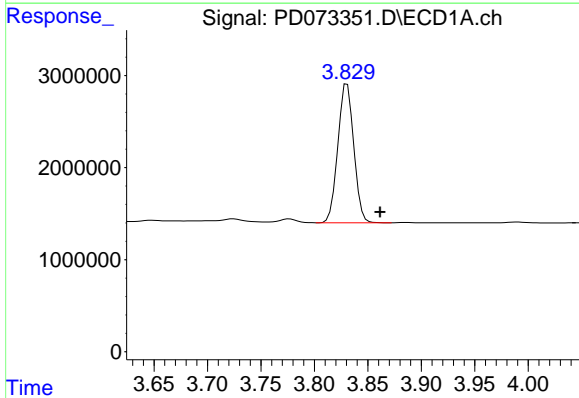


#3 gamma-BHC (Lindane)
 R.T.: 3.529 min
 Delta R.T.: 0.000 min
 Response: 31416190
 Conc: 11.43 ng/ml

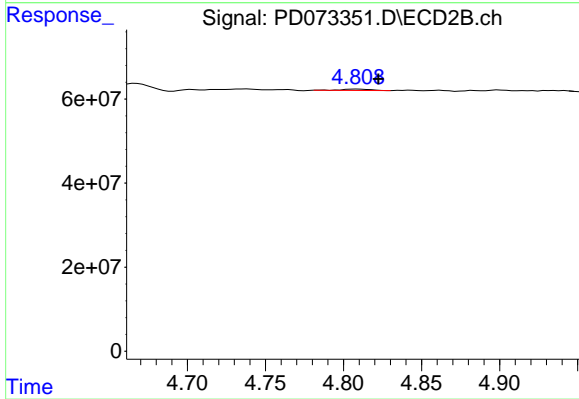
Instrument :
 ECD_D
 ClientSampleId :



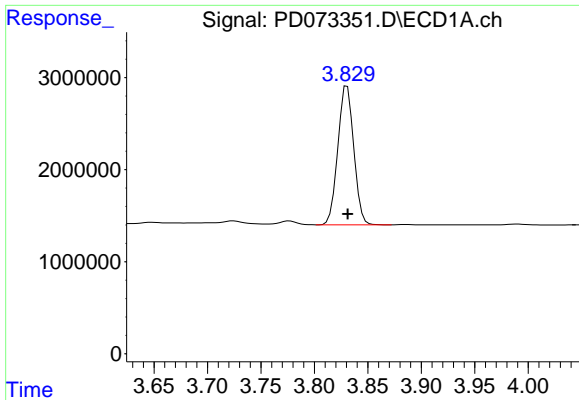
#3 gamma-BHC (Lindane)
 R.T.: 4.254 min
 Delta R.T.: -0.002 min
 Response: 1062624648
 Conc: 10.77 ng/ml



#4 Heptachlor
 R.T.: 3.831 min
 Delta R.T.: -0.031 min
 Response: 15652244
 Conc: 5.00 ng/ml

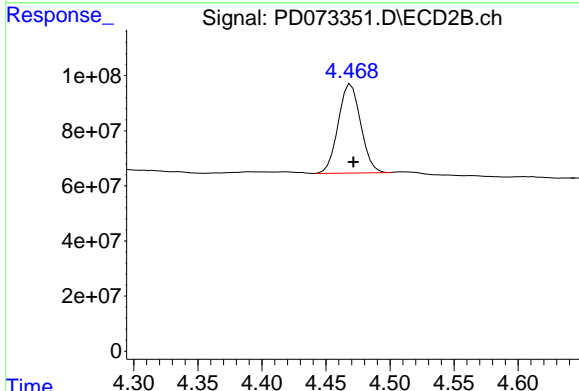


#4 Heptachlor
 R.T.: 4.809 min
 Delta R.T.: -0.014 min
 Response: 3820226
 Conc: 0.06 ng/ml

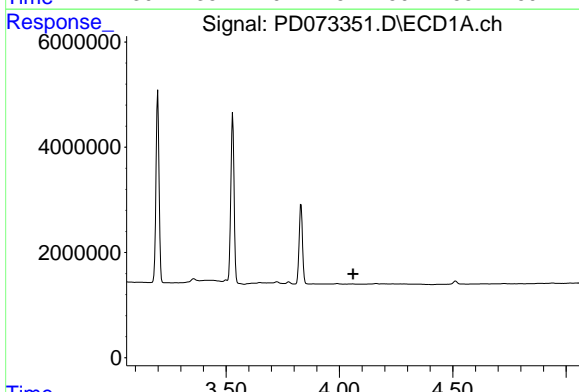


#6 beta-BHC
 R.T.: 3.831 min
 Delta R.T.: 0.000 min
 Response: 15652244
 Conc: 12.33 ng/ml

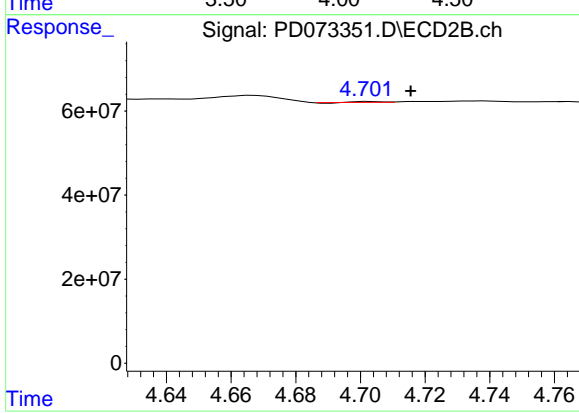
Instrument :
 ECD_D
 ClientSampleId :



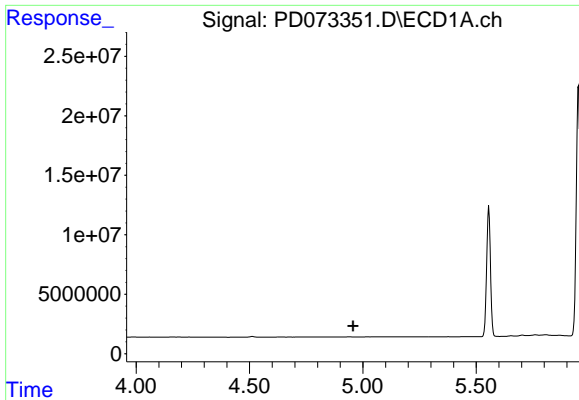
#6 beta-BHC
 R.T.: 4.470 min
 Delta R.T.: -0.002 min
 Response: 393121965
 Conc: 11.60 ng/ml



#7 delta-BHC
 R.T.: 0.000 min
 Exp R.T. : 4.060 min
 Response: 0
 Conc: N.D.



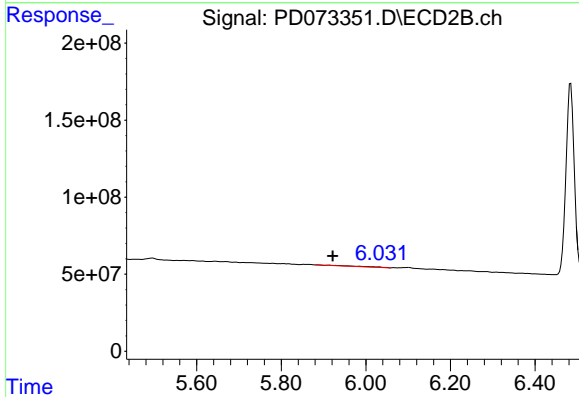
#7 delta-BHC
 R.T.: 4.703 min
 Delta R.T.: -0.012 min
 Response: 576536
 Conc: 0.01 ng/ml



#11 alpha-Chlordane

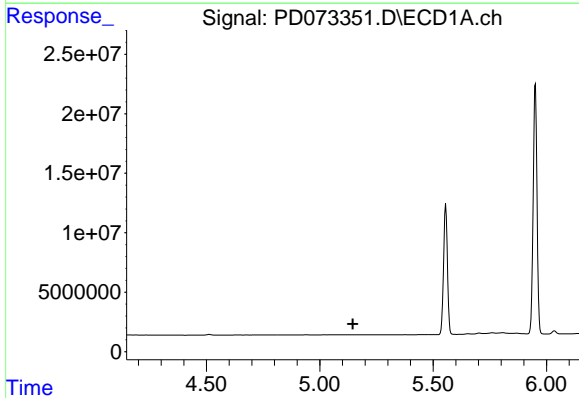
R.T.: 0.000 min
 Exp R.T.: 4.957 min
 Response: 0
 Conc: N.D.

Instrument :
 ECD_D
 ClientSampleId :



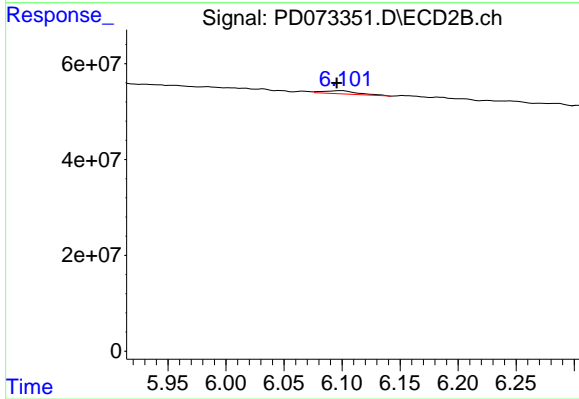
#11 alpha-Chlordane

R.T.: 5.913 min
 Delta R.T.: -0.009 min
 Response: 17651819
 Conc: 0.40 ng/ml



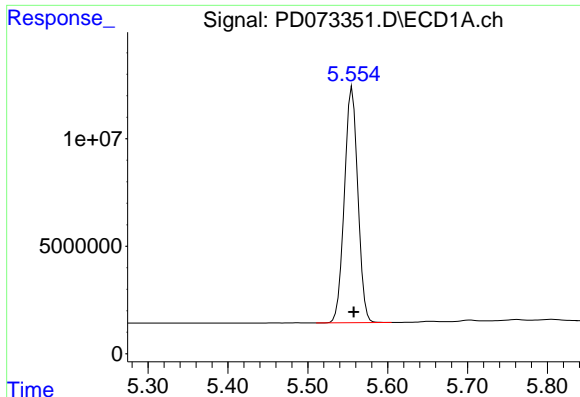
#12 4,4'-DDE

R.T.: 0.000 min
 Exp R.T.: 5.145 min
 Response: 0
 Conc: N.D.



#12 4,4'-DDE

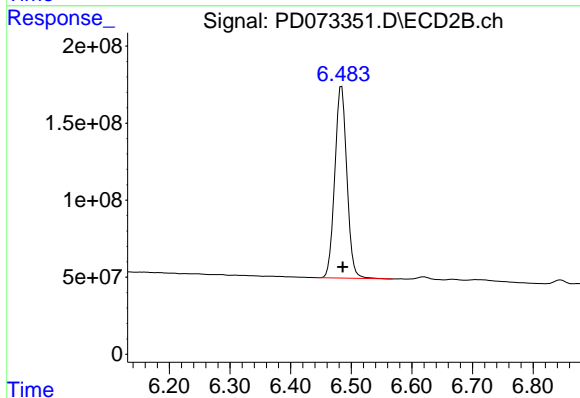
R.T.: 6.100 min
 Delta R.T.: 0.004 min
 Response: 11698741
 Conc: 0.28 ng/ml



#14 Endrin

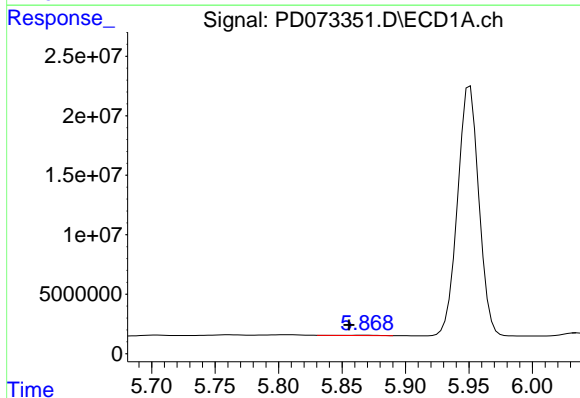
R.T.: 5.555 min
 Delta R.T.: -0.002 min
 Response: 128280314
 Conc: 49.96 ng/ml

Instrument :
 ECD_D
 ClientSampleId :



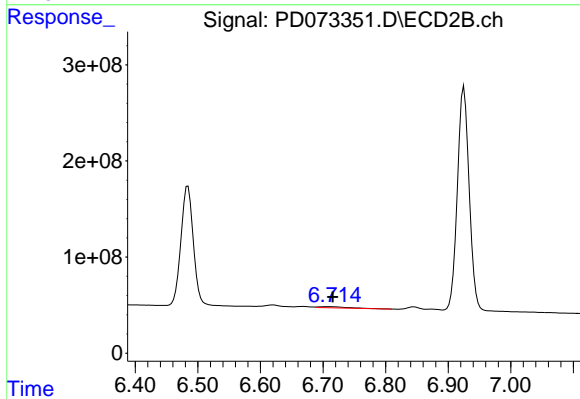
#14 Endrin

R.T.: 6.484 min
 Delta R.T.: -0.002 min
 Response: 1720081080
 Conc: 52.36 ng/ml



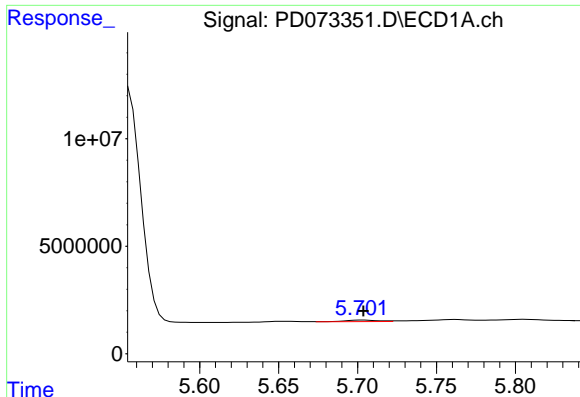
#15 Endosulfan II

R.T.: 5.868 min
 Delta R.T.: 0.012 min
 Response: 304646
 Conc: 0.13 ng/ml



#15 Endosulfan II

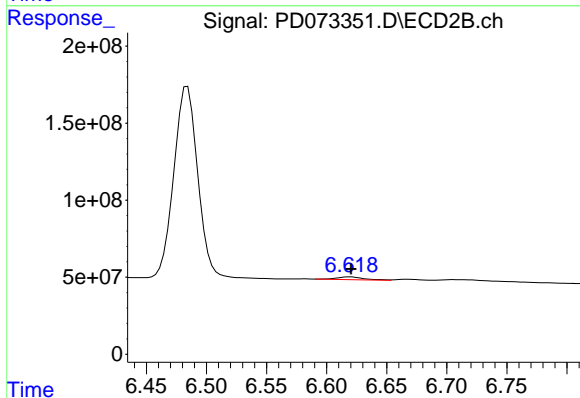
R.T.: 6.706 min
 Delta R.T.: -0.010 min
 Response: 37841893
 Conc: 1.19 ng/ml



#16 4,4'-DDD

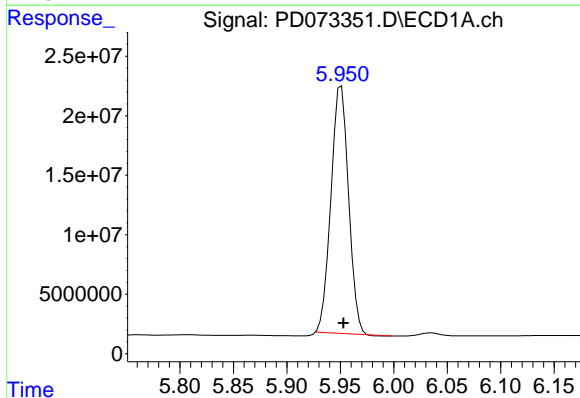
R.T.: 5.703 min
 Delta R.T.: 0.000 min
 Response: 1013975
 Conc: 0.45 ng/ml

Instrument :
 ECD_D
 ClientSampleId :



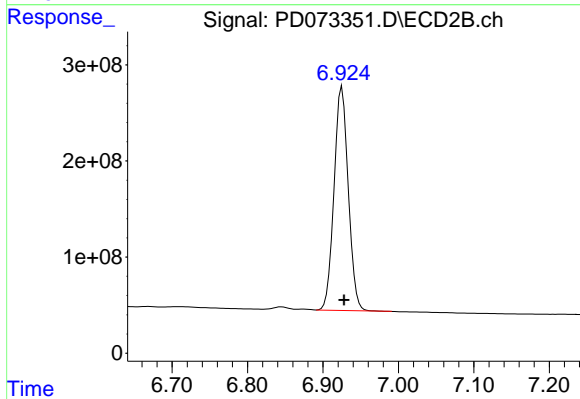
#16 4,4'-DDD

R.T.: 6.619 min
 Delta R.T.: 0.000 min
 Response: 28849693
 Conc: 0.92 ng/ml



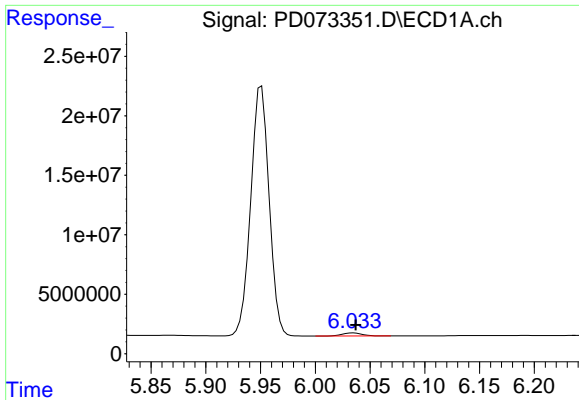
#17 4,4'-DDT

R.T.: 5.951 min
 Delta R.T.: -0.002 min
 Response: 237370102
 Conc: 107.16 ng/ml



#17 4,4'-DDT

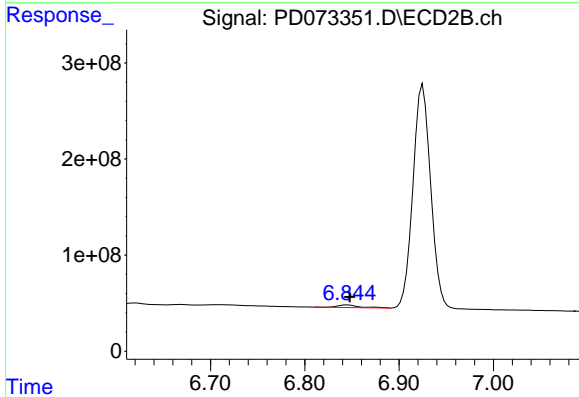
R.T.: 6.925 min
 Delta R.T.: -0.003 min
 Response: 3054471848
 Conc: 101.08 ng/ml



#18 Endrin aldehyde

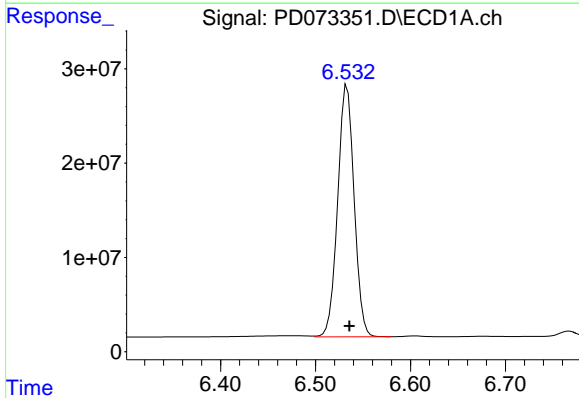
R.T.: 6.035 min
 Delta R.T.: -0.002 min
 Response: 3209839
 Conc: 1.71 ng/ml

Instrument :
 ECD_D
 ClientSampleId :



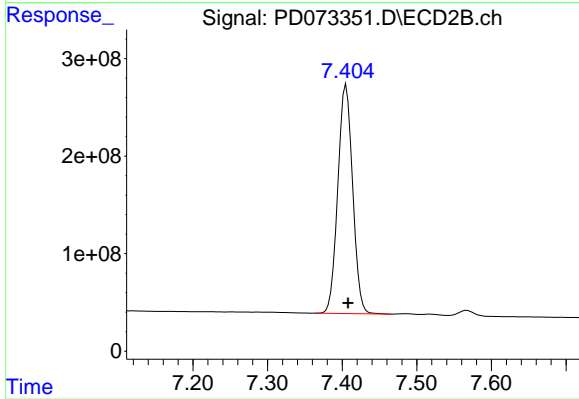
#18 Endrin aldehyde

R.T.: 6.845 min
 Delta R.T.: -0.002 min
 Response: 45981627
 Conc: 1.96 ng/ml



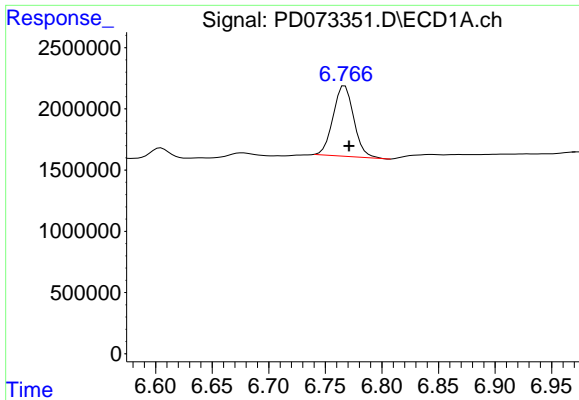
#20 Methoxychlor

R.T.: 6.533 min
 Delta R.T.: -0.002 min
 Response: 321797538
 Conc: 241.44 ng/ml



#20 Methoxychlor

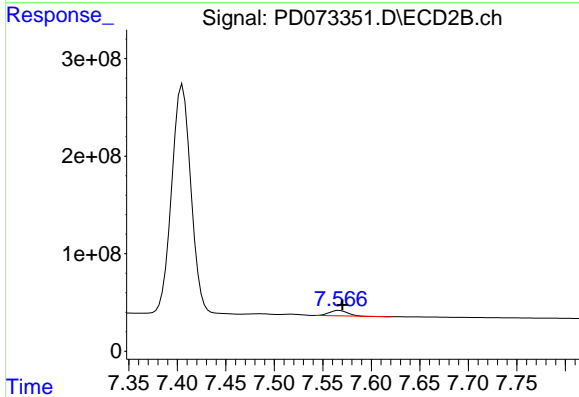
R.T.: 7.405 min
 Delta R.T.: -0.002 min
 Response: 3239341767
 Conc: 239.32 ng/ml



#21 Endrin ketone

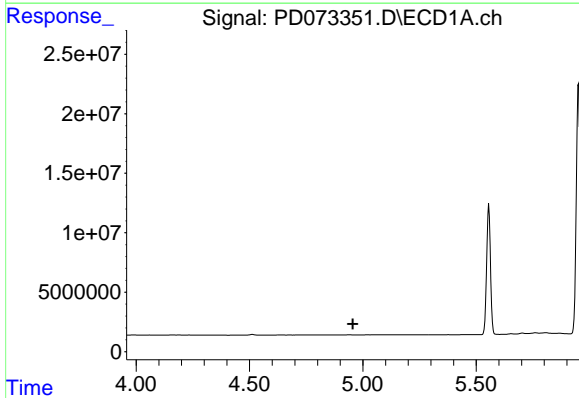
R.T.: 6.767 min
 Delta R.T.: -0.004 min
 Response: 7353469
 Conc: 2.71 ng/ml

Instrument :
 ECD_D
 ClientSampleId :



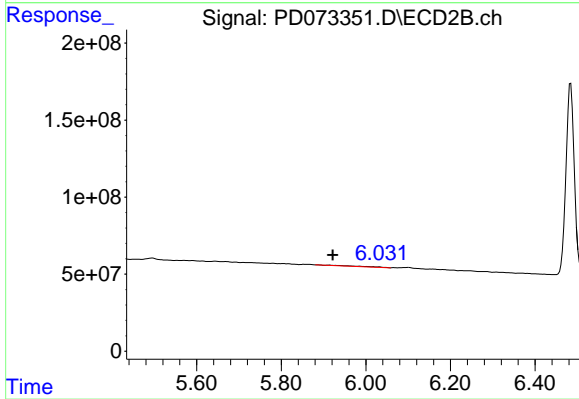
#21 Endrin ketone

R.T.: 7.567 min
 Delta R.T.: -0.003 min
 Response: 72658201
 Conc: 2.65 ng/ml



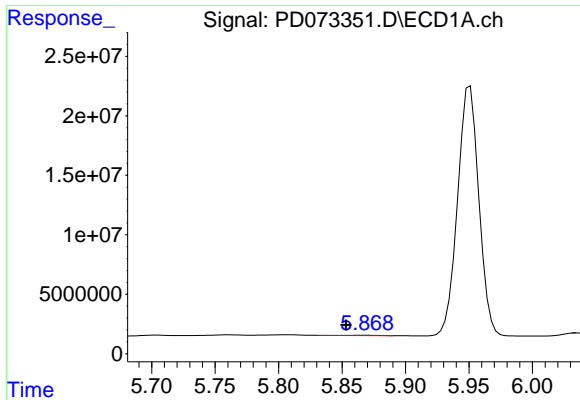
#26 Chlordane-4

R.T.: 0.000 min
 Exp R.T. : 4.956 min
 Response: 0
 Conc: N.D.



#26 Chlordane-4

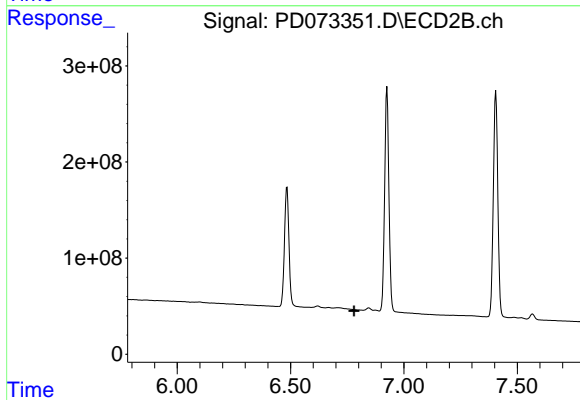
R.T.: 5.913 min
 Delta R.T.: -0.009 min
 Response: 17651819
 Conc: 2.43 ng/ml



#27 Chlordane-5

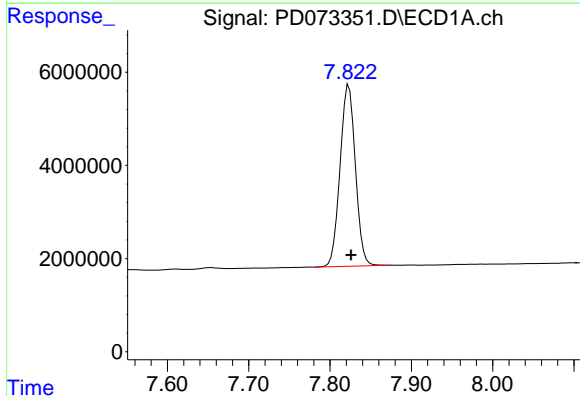
R.T.: 5.868 min
 Delta R.T.: 0.015 min
 Response: 304646
 Conc: 3.38 ng/ml

Instrument :
 ECD_D
 ClientSampleId :



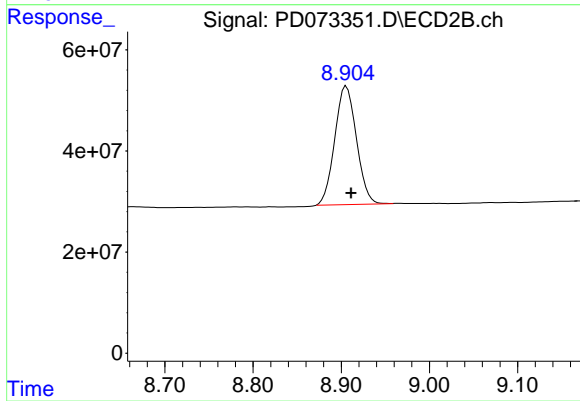
#27 Chlordane-5

R.T.: 0.000 min
 Exp R.T. : 6.780 min
 Response: 0
 Conc: N.D.



#28 Decachlorobiphenyl

R.T.: 7.823 min
 Delta R.T.: -0.003 min
 Response: 51002277
 Conc: 21.06 ng/ml



#28 Decachlorobiphenyl

R.T.: 8.906 min
 Delta R.T.: -0.005 min
 Response: 401345137
 Conc: 22.77 ng/ml