

Data Path : Z:\pestpcbsrv\HPCHEM1\ECD_D\Data\PD121922\
 Data File : PD073363.D
 Signal(s) : Signal #1: ECD1A.ch Signal #2: ECD2B.ch
 Acq On : 19 Dec 2022 16:52
 Operator : AR\AJ
 Sample : PTOXCCC500
 Misc :
 ALS Vial : 6 Sample Multiplier: 1

Instrument :
 ECD_D
 ClientSampleId :

Integration File signal 1: autoint1.e
 Integration File signal 2: autoint2.e
 Quant Time: Dec 20 00:27:17 2022
 Quant Method : Z:\pestpcbsrv\HPCHEM1\ECD_D\Method\DTX121622.M
 Quant Title : GC Extractables
 QLast Update : Fri Dec 16 15:37:29 2022
 Response via : Initial Calibration
 Integrator: ChemStation

Volume Inj. : 1 µl
 Signal #1 Phase : ZB-MR2 Signal #2 Phase: ZB-MR1
 Signal #1 Info : 30M x 0.32mm x0.2 Signal #2 Info : 30M x 0.32mm x 0.50µm

Compound	RT#1	RT#2	Resp#1	Resp#2	ng/ml	ng/ml

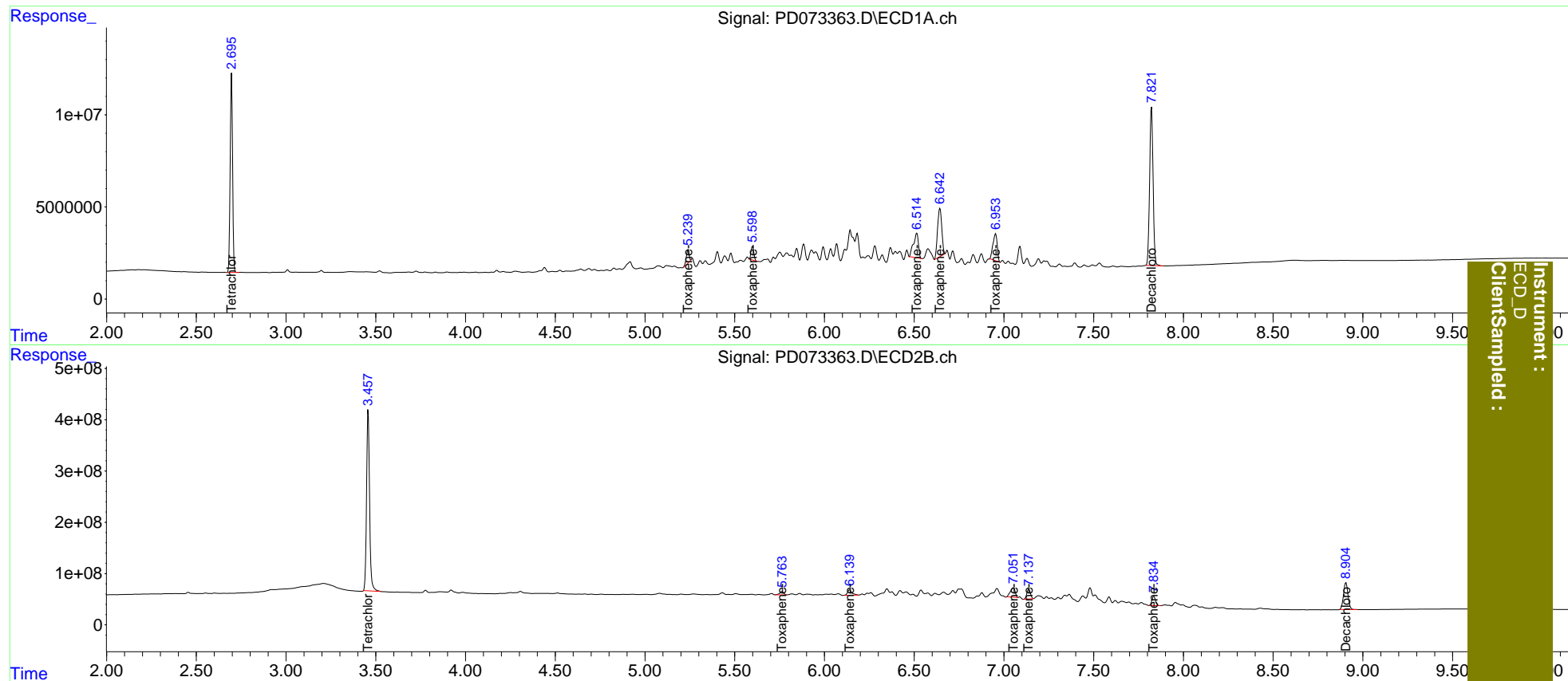
System Monitoring Compounds						
1) SA Tetrachlo...	2.697	3.458	99958565	4135.1E6	48.341	42.895
7) SA Decachlor...	7.823	8.906	115.3E6	911.8E6	48.028	51.931
Target Compounds						
2) Toxaphene-1	5.241	5.764	7585703	99228501	491.763	499.575
3) Toxaphene-2	5.599	6.140	8120049	180.4E6	497.613	501.414
4) Toxaphene-3	6.515	7.053	25686537	343.1E6	497.210	502.170
5) Toxaphene-4	6.644	7.138	42742175	262.0E6	498.885	532.428
6) Toxaphene-5	6.954	7.835	24092541	256.6E6	491.010	531.526

(f)=RT Delta > 1/2 Window (#)=Amounts differ by > 25% (m)=manual int.

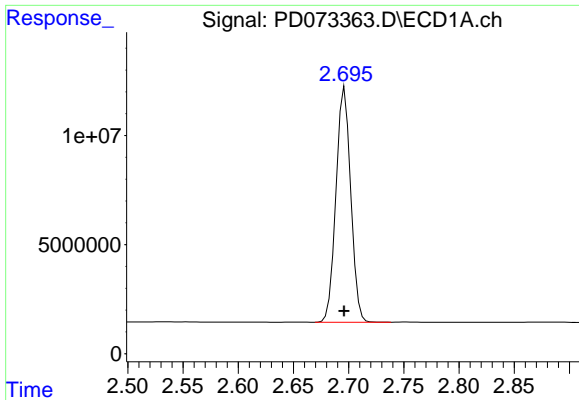
Data Path : Z:\pestpcbsrv\HPCHEM1\ECD_D\Data\PD121922\
 Data File : PD073363.D
 Signal(s) : Signal #1: ECD1A.ch Signal #2: ECD2B.ch
 Acq On : 19 Dec 2022 16:52
 Operator : AR\AJ
 Sample : PTOXCCC500
 Misc :
 ALS Vial : 6 Sample Multiplier: 1

Integration File signal 1: autoint1.e
 Integration File signal 2: autoint2.e
 Quant Time: Dec 20 00:27:17 2022
 Quant Method : Z:\pestpcbsrv\HPCHEM1\ECD_D\Method\DTX121622.M
 Quant Title : GC Extractables
 QLast Update : Fri Dec 16 15:37:29 2022
 Response via : Initial Calibration
 Integrator: ChemStation

Volume Inj. : 1 µl
 Signal #1 Phase : ZB-MR2 Signal #2 Phase: ZB-MR1
 Signal #1 Info : 30M x 0.32mm x0.2 Signal #2 Info : 30M x 0.32mm x 0.50µm

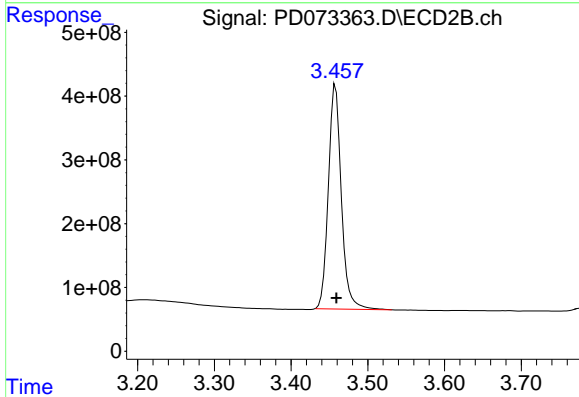


Instrument :
 ECD_D
 ClientSampled :

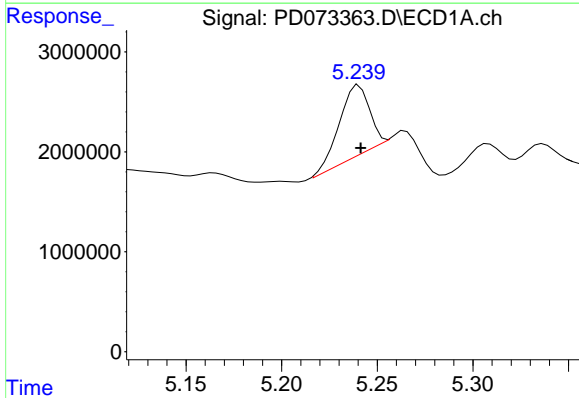


#1 Tetrachloro-m-xylene
 R.T.: 2.697 min
 Delta R.T.: 0.000 min
 Response: 99958565
 Conc: 48.34 ng/ml

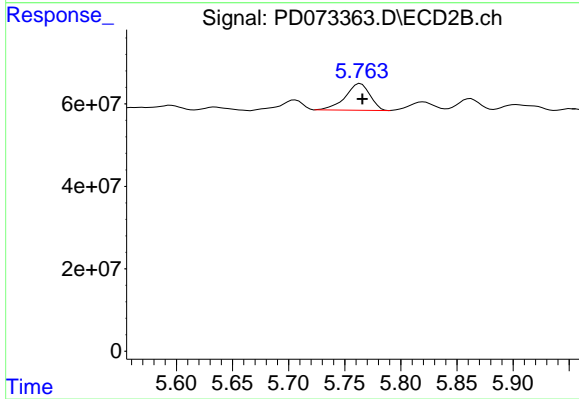
Instrument :
 ECD_D
 ClientSampleId :



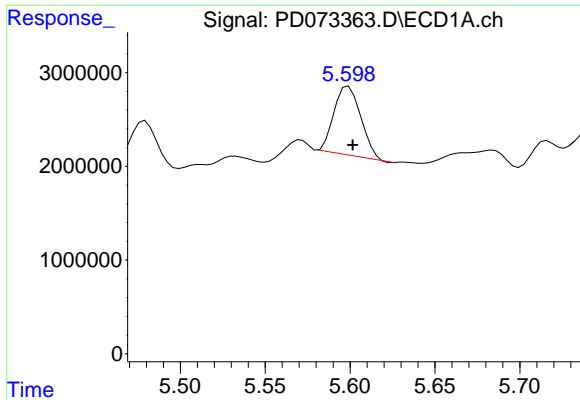
#1 Tetrachloro-m-xylene
 R.T.: 3.458 min
 Delta R.T.: -0.001 min
 Response: 4135071143
 Conc: 42.89 ng/ml



#2 Toxaphene-1
 R.T.: 5.241 min
 Delta R.T.: 0.000 min
 Response: 7585703
 Conc: 491.76 ng/ml



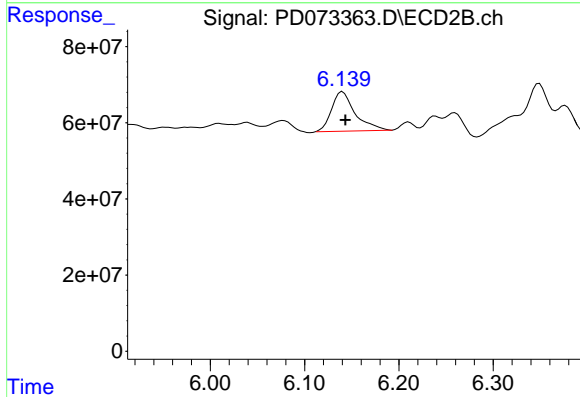
#2 Toxaphene-1
 R.T.: 5.764 min
 Delta R.T.: -0.002 min
 Response: 99228501
 Conc: 499.57 ng/ml



#3 Toxaphene-2

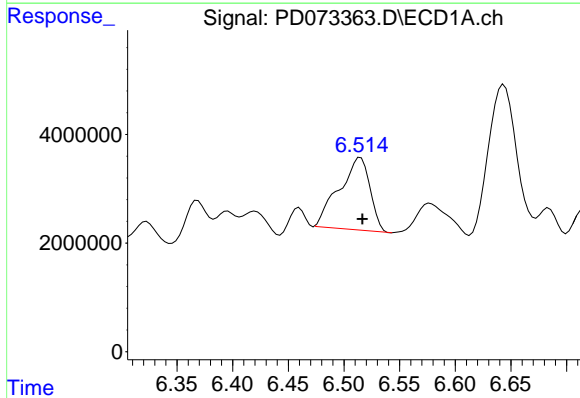
R.T.: 5.599 min
 Delta R.T.: -0.002 min
 Response: 8120049
 Conc: 497.61 ng/ml

Instrument :
 ECD_D
 ClientSampleId :



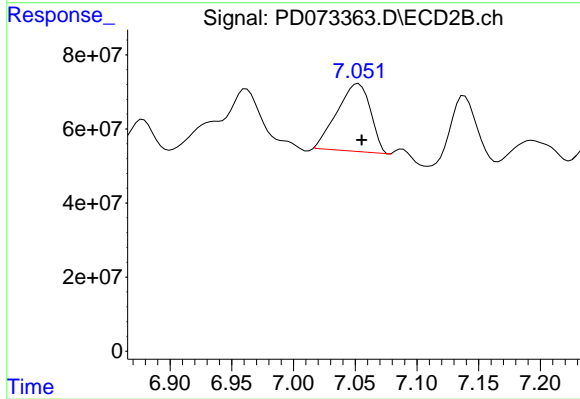
#3 Toxaphene-2

R.T.: 6.140 min
 Delta R.T.: -0.003 min
 Response: 180426386
 Conc: 501.41 ng/ml



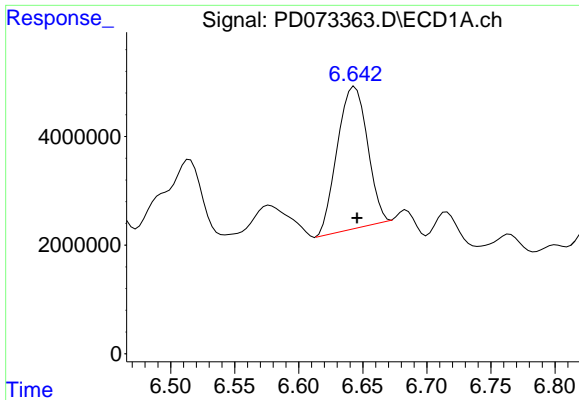
#4 Toxaphene-3

R.T.: 6.515 min
 Delta R.T.: -0.002 min
 Response: 25686537
 Conc: 497.21 ng/ml



#4 Toxaphene-3

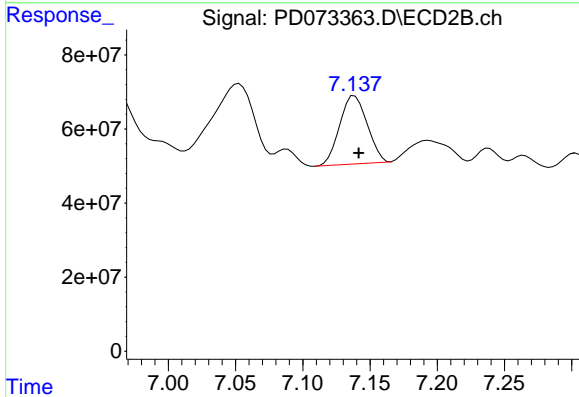
R.T.: 7.053 min
 Delta R.T.: -0.003 min
 Response: 343115108
 Conc: 502.17 ng/ml



#5 Toxaphene-4

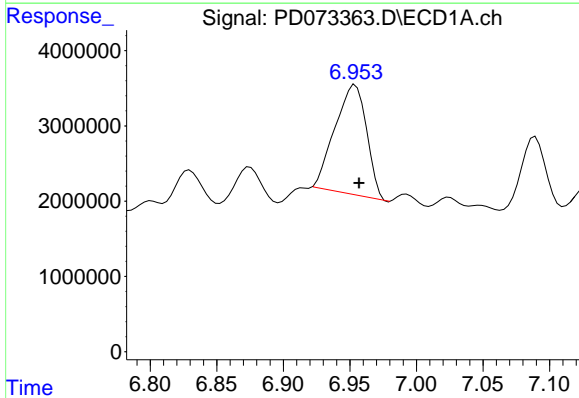
R.T.: 6.644 min
 Delta R.T.: -0.002 min
 Response: 42742175
 Conc: 498.89 ng/ml

Instrument :
 ECD_D
 ClientSampleId :



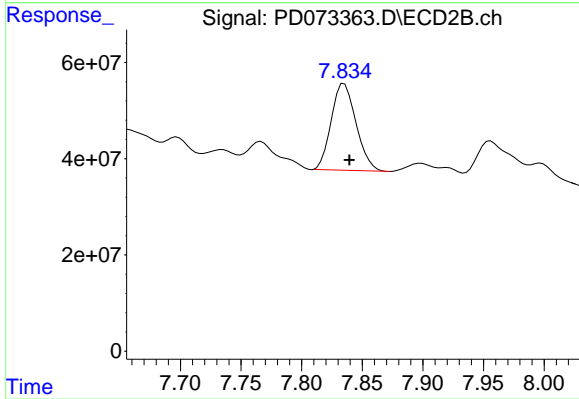
#5 Toxaphene-4

R.T.: 7.138 min
 Delta R.T.: -0.003 min
 Response: 261979172
 Conc: 532.43 ng/ml



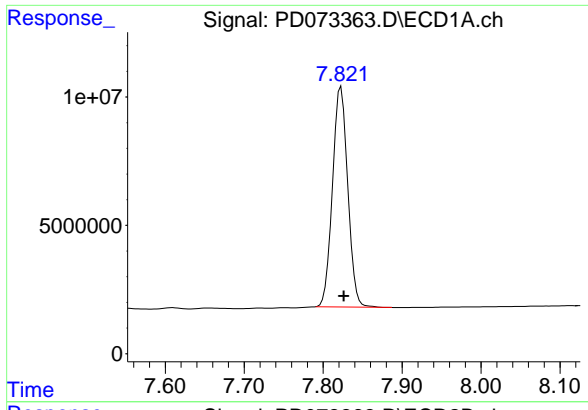
#6 Toxaphene-5

R.T.: 6.954 min
 Delta R.T.: -0.003 min
 Response: 24092541
 Conc: 491.01 ng/ml



#6 Toxaphene-5

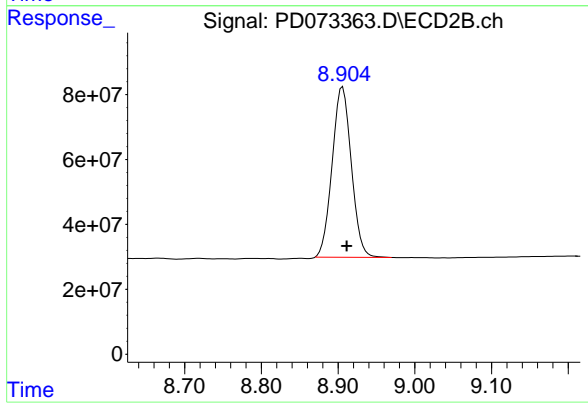
R.T.: 7.835 min
 Delta R.T.: -0.004 min
 Response: 256554350
 Conc: 531.53 ng/ml



#7 Decachlorobiphenyl

R.T.: 7.823 min
Delta R.T.: -0.004 min
Response: 115273181
Conc: 48.03 ng/ml

Instrument :
ECD_D
ClientSampleId :



#7 Decachlorobiphenyl

R.T.: 8.906 min
Delta R.T.: -0.005 min
Response: 911768651
Conc: 51.93 ng/ml