

Data Path : Z:\pestpcbsrv\HPCHEM1\ECD_D\Data\PD121923\
 Data File : PD080178.D
 Signal(s) : Signal #1: ECD1A.ch Signal #2: ECD2B.ch
 Acq On : 17 Dec 2023 20:27
 Operator : AR\AJ
 Sample : PIBLK117
 Misc :
 ALS Vial : 2 Sample Multiplier: 1

Instrument :
 ECD_D
ClientSampleId :
 PIBLK868

Manual Integrations
APPROVED

Reviewed By :Abdul Mirza 12/18/2023
 Supervised By :Ankita Jodhani 12/18/2023

Integration File signal 1: autoint1.e
 Integration File signal 2: autoint2.e
 Quant Time: Dec 17 21:01:45 2023
 Quant Method : Z:\pestpcbsrv\HPCHEM1\ECD_D\Method\PD121623CLP.M
 Quant Title : GC Extractables
 QLast Update : Sat Dec 16 03:10:23 2023
 Response via : Initial Calibration
 Integrator: ChemStation

Volume Inj. : 1 µl
 Signal #1 Phase : ZB-MR1 Signal #2 Phase: ZB-MR2
 Signal #1 Info : 30M x 0.32mm x0.5 Signal #2 Info : 30M x 0.32mm x 0.25µm

Compound	RT#1	RT#2	Resp#1	Resp#2	ng/ml	ng/ml

System Monitoring Compounds						
1) SA Tetrachlo...	3.568	2.801	24976534	47348137	19.562	21.294
2) SA Decachlor...	9.114	7.943	22900531	35587757	14.244m	14.827

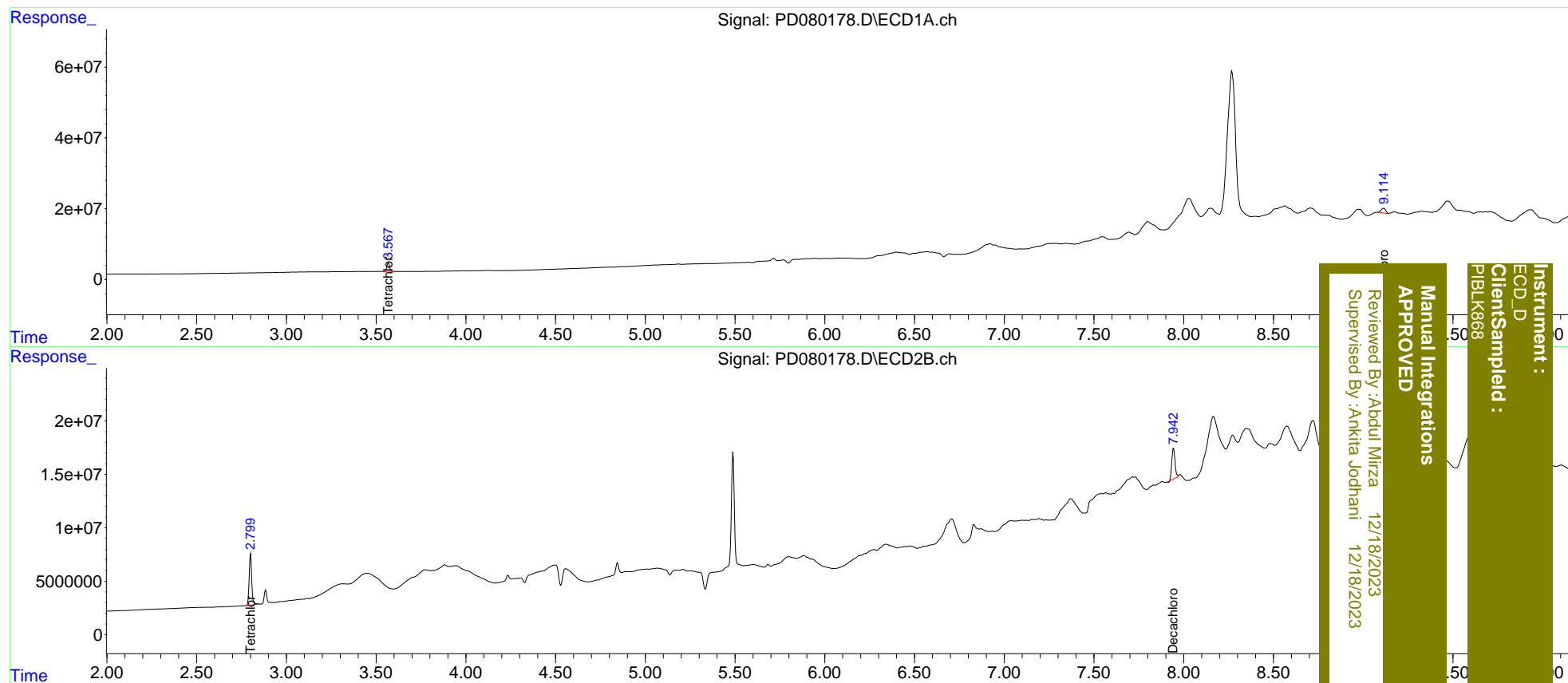
Target Compounds

(f)=RT Delta > 1/2 Window (#)=Amounts differ by > 25% (m)=manual int.

Data Path : Z:\pestpcbsrv\HPCHEM1\ECD_D\Data\PD121923\
 Data File : PD080178.D
 Signal(s) : Signal #1: ECD1A.ch Signal #2: ECD2B.ch
 Acq On : 17 Dec 2023 20:27
 Operator : AR\AJ
 Sample : PIBLK117
 Misc :
 ALS Vial : 2 Sample Multiplier: 1

Integration File signal 1: autoint1.e
 Integration File signal 2: autoint2.e
 Quant Time: Dec 17 21:01:45 2023
 Quant Method : Z:\pestpcbsrv\HPCHEM1\ECD_D\Method\PD121623CLP.M
 Quant Title : GC Extractables
 QLast Update : Sat Dec 16 03:10:23 2023
 Response via : Initial Calibration
 Integrator: ChemStation

Volume Inj. : 1 µl
 Signal #1 Phase : ZB-MR1 Signal #2 Phase: ZB-MR2
 Signal #1 Info : 30M x 0.32mm x0.5 Signal #2 Info : 30M x 0.32mm x 0.25µm



Instrument : ECD_D
 Client Sampled : PIBLK868
 Manual Integrations APPROVED
 Reviewed By : Aboul Mirza 12/18/2023
 Supervised By : Ankita Jodhani 12/18/2023