

Data Path : Z:\pestpcbsrv\HPCHEM1\ECD\_D\Data\PD121923\  
 Data File : PD080163.D  
 Signal(s) : Signal #1: ECD1A.ch Signal #2: ECD2B.ch  
 Acq On : 17 Dec 2023 17:07  
 Operator : ARVAJ  
 Sample : 05794-08  
 Misc :  
 ALS Vial : 16 Sample Multiplier: 1

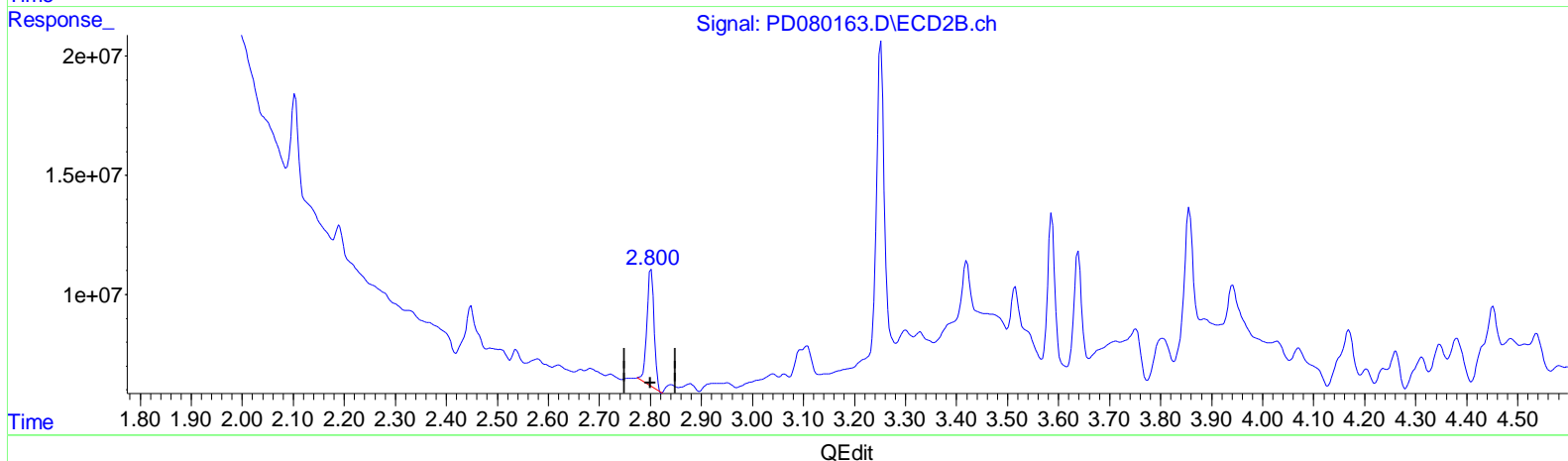
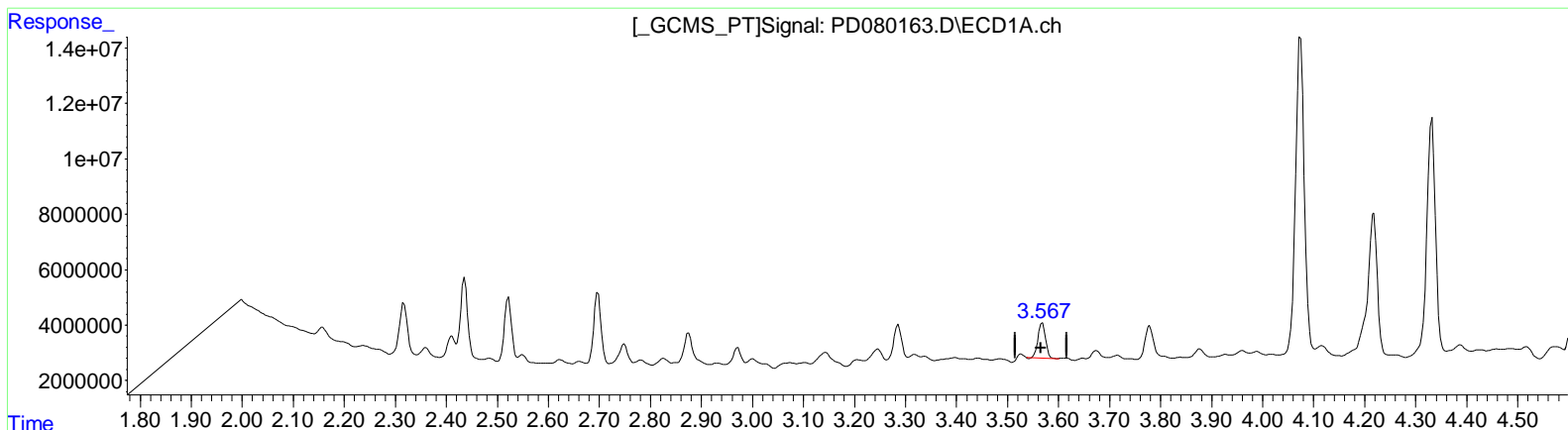
**Instrument :**  
 ECD\_D  
**ClientSampleId :**  
 BH3Q2

**Manual IntegrationsAPPROVED**

Reviewed By :Abdul Mirza 12/18/2023  
 Supervised By :Ankita Jodhani 12/18/2023

Integration File signal 1: autoint1.e  
 Integration File signal 2: autoint2.e  
 Quant Time: Dec 17 20:57:57 2023  
 Quant Method : Z:\pestpcbsrv\HPCHEM1\ECD\_D\Method\PD121623CLP.M  
 Quant Title : GC Extractables  
 QLast Update : Sat Dec 16 03:10:23 2023  
 Response via : Initial Calibration  
 Integrator: ChemStation

Volume Inj. : 1 µl  
 Signal #1 Phase : ZB-MR1 Signal #2 Phase: ZB-MR2  
 Signal #1 Info : 30M x 0.32mm x0.5 Signal #2 Info : 30M x 0.32mm x 0.25µm



(1) Tetrachloro-m-xylene (SA)  
 3.568min 10.054 ng/ml  
 response 12836302

(1) Tetrachloro-m-xylene #2 (SA)  
 2.801min 21.746 ng/ml  
 response 48353816

Data Path : Z:\pestpcbsrv\HPCHEM1\ECD\_D\Data\PD121923\  
 Data File : PD080163.D  
 Signal(s) : Signal #1: ECD1A.ch Signal #2: ECD2B.ch  
 Acq On : 17 Dec 2023 17:07  
 Operator : ARVAJ  
 Sample : 05794-08  
 Misc :  
 ALS Vial : 16 Sample Multiplier: 1

**Instrument :**

ECD\_D

**ClientSampleId :**

BH3Q2

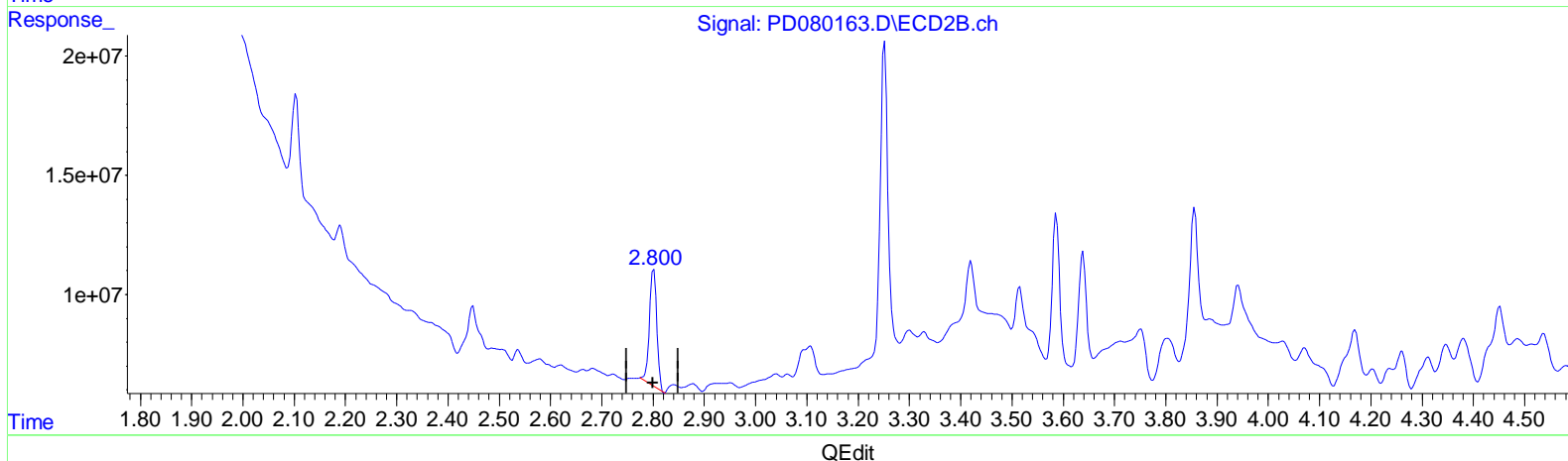
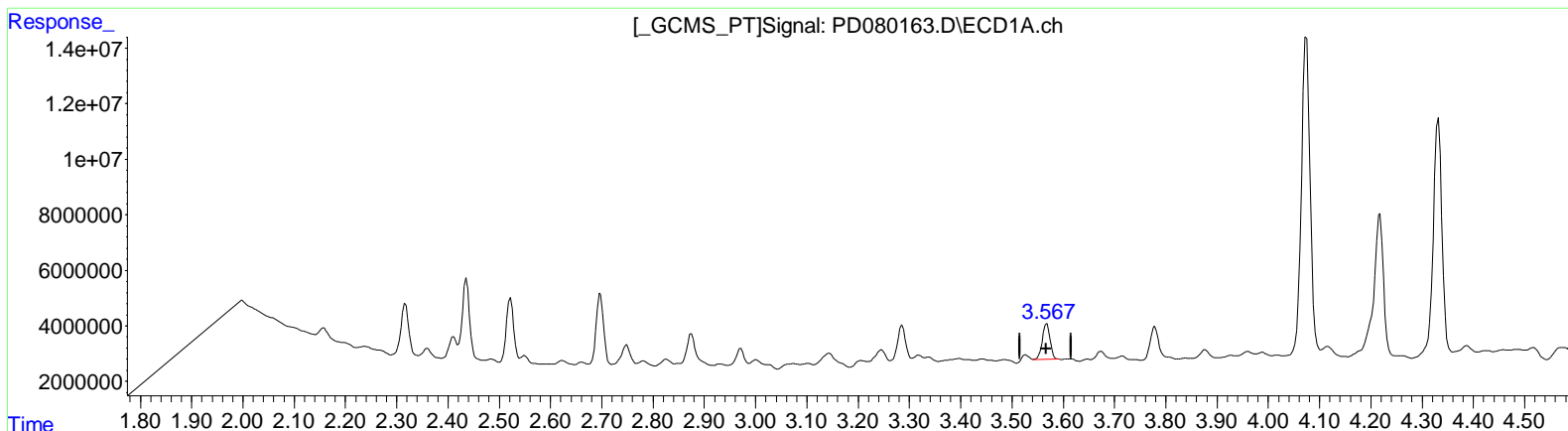
**Manual IntegrationsAPPROVED**

Reviewed By :Abdul Mirza 12/18/2023

Supervised By :Ankita Jodhani 12/18/2023

Integration File signal 1: autoint1.e  
 Integration File signal 2: autoint2.e  
 Quant Time: Dec 17 20:57:57 2023  
 Quant Method : Z:\pestpcbsrv\HPCHEM1\ECD\_D\Method\PD121623CLP.M  
 Quant Title : GC Extractables  
 QLast Update : Sat Dec 16 03:10:23 2023  
 Response via : Initial Calibration  
 Integrator: ChemStation

Volume Inj. : 1 µl  
 Signal #1 Phase : ZB-MR1 Signal #2 Phase: ZB-MR2  
 Signal #1 Info : 30M x 0.32mm x0.5 Signal #2 Info : 30M x 0.32mm x 0.25µm



(1) Tetrachloro-m-xylene (SA)

3.567min 10.637 ng/ml m

response 13581391

(1) Tetrachloro-m-xylene #2 (SA)

2.801min 21.746 ng/ml

response 48353816

Data Path : Z:\pestpcbsrv\HPCHEM1\ECD\_D\Data\PD121923\  
 Data File : PD080163.D  
 Signal(s) : Signal #1: ECD1A.ch Signal #2: ECD2B.ch  
 Acq On : 17 Dec 2023 17:07  
 Operator : ARVAJ  
 Sample : 05794-08  
 Misc :  
 ALS Vial : 16 Sample Multiplier: 1

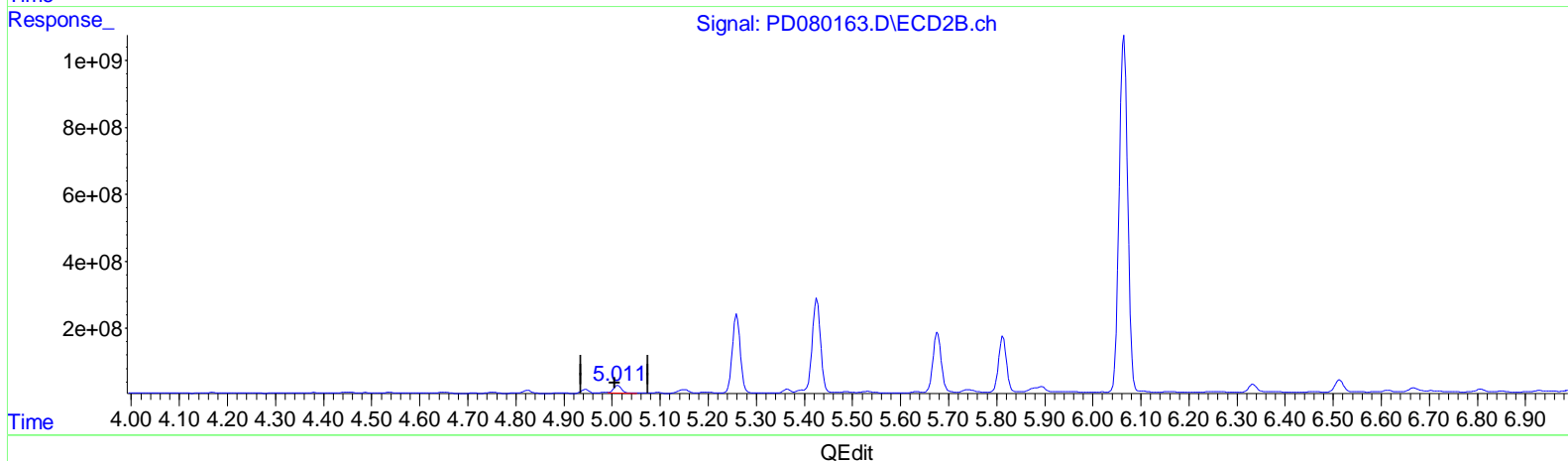
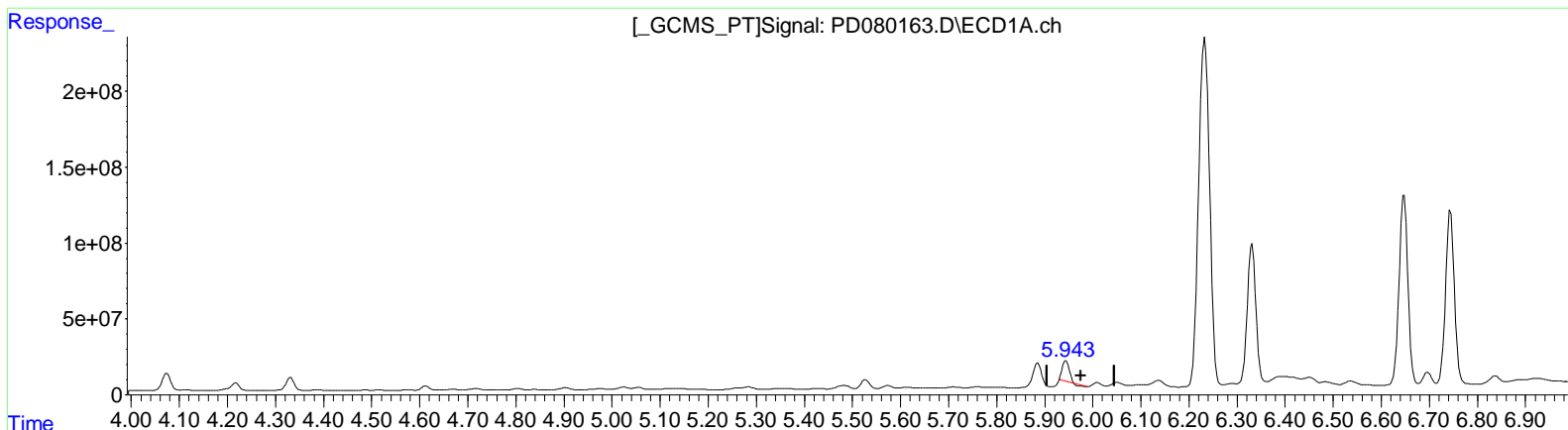
**Instrument :**  
 ECD\_D  
**ClientSampleId :**  
 BH3Q2

**Manual Integrations APPROVED**

Reviewed By : Abdul Mirza 12/18/2023  
 Supervised By : Ankita Jodhani 12/18/2023

Integration File signal 1: autoint1.e  
 Integration File signal 2: autoint2.e  
 Quant Time: Dec 17 20:57:57 2023  
 Quant Method : Z:\pestpcbsrv\HPCHEM1\ECD\_D\Method\PD121623CLP.M  
 Quant Title : GC Extractables  
 QLast Update : Sat Dec 16 03:10:23 2023  
 Response via : Initial Calibration  
 Integrator: ChemStation

Volume Inj. : 1 µl  
 Signal #1 Phase : ZB-MR1 Signal #2 Phase: ZB-MR2  
 Signal #1 Info : 30M x 0.32mm x 0.5 Signal #2 Info : 30M x 0.32mm x 0.25µm



(10) trans-Chlordane (B)  
 5.944min 65.140 ng/ml  
 response 133680775

(10) trans-Chlordane #2 (B)  
 5.013min 85.943 ng/ml  
 response 282734747

Data Path : Z:\pestpcbsrv\HPCHEM1\ECD\_D\Data\PD121923\  
 Data File : PD080163.D  
 Signal(s) : Signal #1: ECD1A.ch Signal #2: ECD2B.ch  
 Acq On : 17 Dec 2023 17:07  
 Operator : ARVAJ  
 Sample : 05794-08  
 Misc :  
 ALS Vial : 16 Sample Multiplier: 1

**Instrument :**

ECD\_D

**ClientSampleId :**

BH3Q2

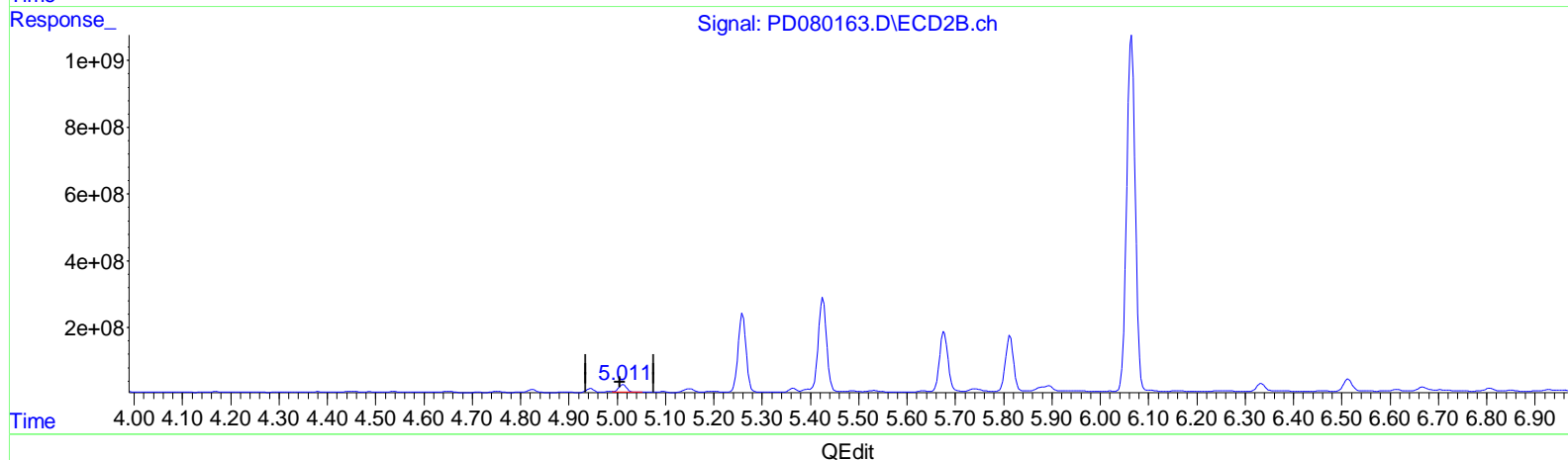
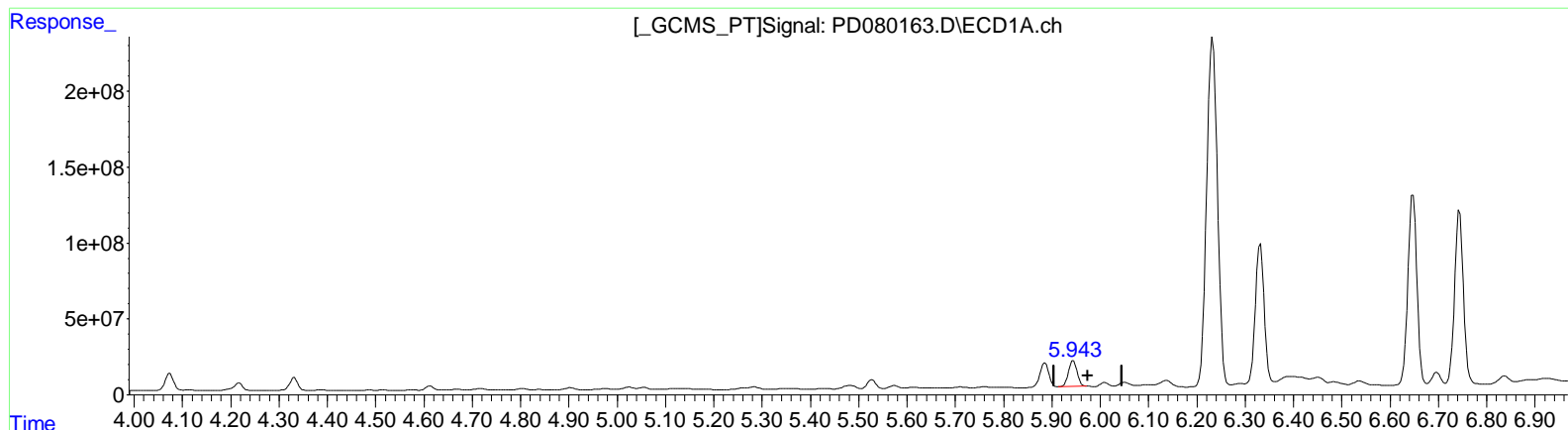
**Manual Integrations APPROVED**

Reviewed By : Abdul Mirza 12/18/2023

Supervised By : Ankita Jodhani 12/18/2023

Integration File signal 1: autoint1.e  
 Integration File signal 2: autoint2.e  
 Quant Time: Dec 17 20:57:57 2023  
 Quant Method : Z:\pestpcbsrv\HPCHEM1\ECD\_D\Method\PD121623CLP.M  
 Quant Title : GC Extractables  
 QLast Update : Sat Dec 16 03:10:23 2023  
 Response via : Initial Calibration  
 Integrator: ChemStation

Volume Inj. : 1 µl  
 Signal #1 Phase : ZB-MR1 Signal #2 Phase: ZB-MR2  
 Signal #1 Info : 30M x 0.32mm x 0.5 Signal #2 Info : 30M x 0.32mm x 0.25µm



(10) trans-Chlordane (B)  
 5.943min 104.683 ng/ml m  
 response 214830962

(10) trans-Chlordane #2 (B)  
 5.011min 82.895 ng/ml m  
 response 272707513

Data Path : Z:\pestpcbsrv\HPCHEM1\ECD\_D\Data\PD121923\  
 Data File : PD080163.D  
 Signal (s) : Signal #1: ECD1A.ch Signal #2: ECD2B.ch  
 Acq On : 17 Dec 2023 17:07  
 Operator : ARVAJ  
 Sample : 05794-08  
 Misc :  
 ALS Vial : 16 Sample Multiplier: 1

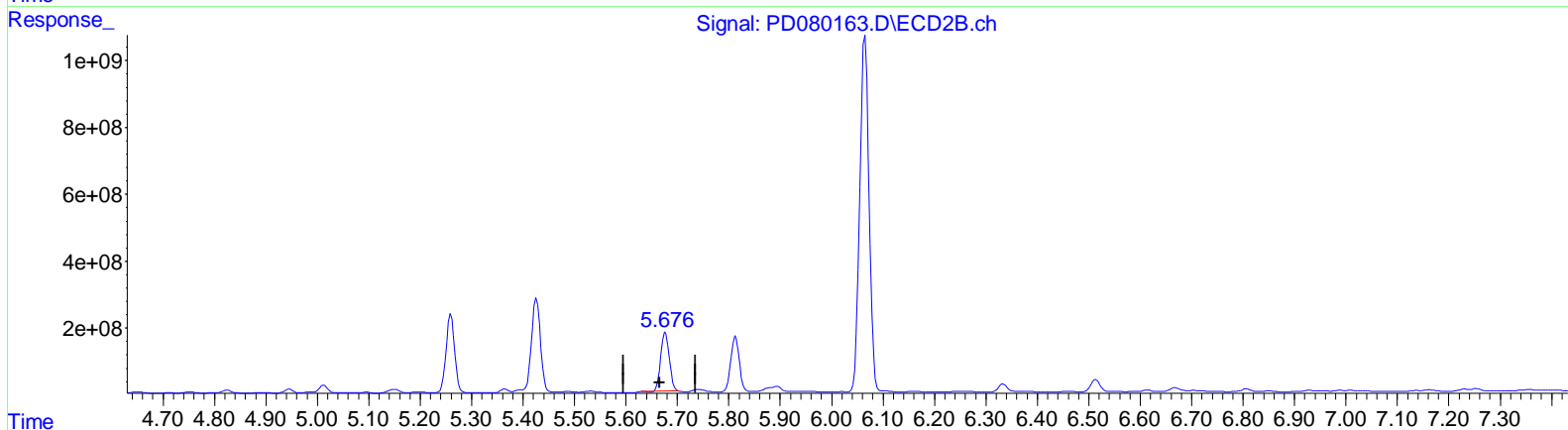
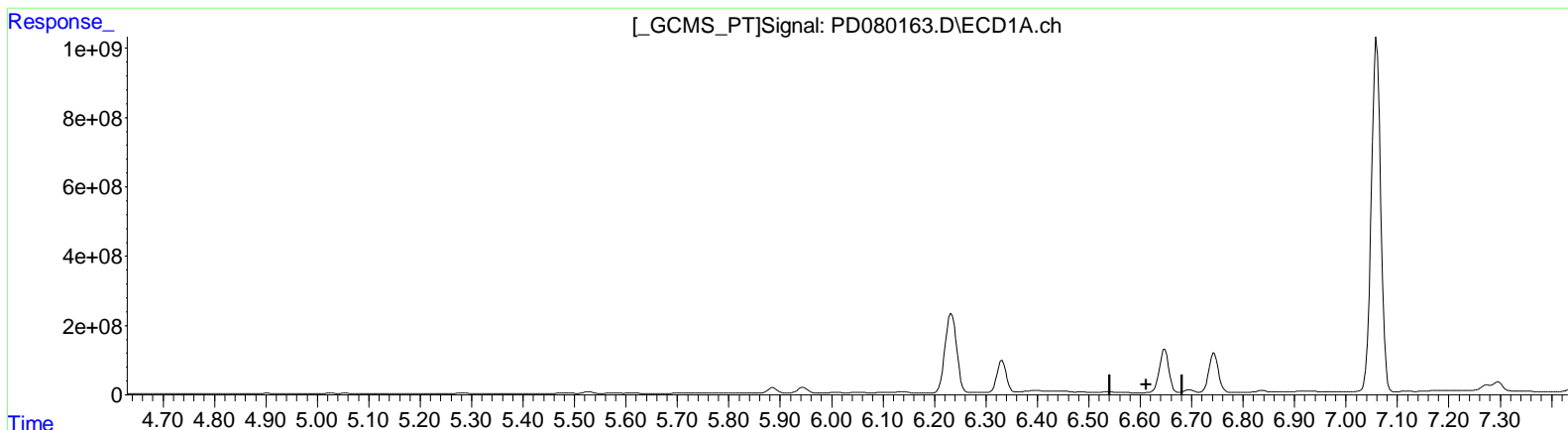
**Instrument :**  
 ECD\_D  
**ClientSampleId :**  
 BH3Q2

**Manual Integrations APPROVED**

Reviewed By : Abdul Mirza 12/18/2023  
 Supervised By : Ankita Jodhani 12/18/2023

Integration File signal 1: autoint1.e  
 Integration File signal 2: autoint2.e  
 Quant Time: Dec 17 20:57:57 2023  
 Quant Method : Z:\pestpcbsrv\HPCHEM1\ECD\_D\Method\PD121623CLP.M  
 Quant Title : GC Extractables  
 QLast Update : Sat Dec 16 03:10:23 2023  
 Response via : Initial Calibration  
 Integrator: ChemStation

Volume Inj. : 1 µl  
 Signal #1 Phase : ZB-MR1 Signal #2 Phase: ZB-MR2  
 Signal #1 Info : 30M x 0.32mm x 0.5 Signal #2 Info : 30M x 0.32mm x 0.25µm



QEdit

(14) Endrin (MA)  
 0.000min 0.000 ng/ml  
 response 0

(14) Endrin #2 (MA)  
 5.677min 777.773 ng/ml  
 response 2046385950

Data Path : Z:\pestpcbsrv\HPCHEM1\ECD\_D\Data\PD121923\  
 Data File : PD080163.D  
 Signal(s) : Signal #1: ECD1A.ch Signal #2: ECD2B.ch  
 Acq On : 17 Dec 2023 17:07  
 Operator : ARVAJ  
 Sample : 05794-08  
 Misc :  
 ALS Vial : 16 Sample Multiplier: 1

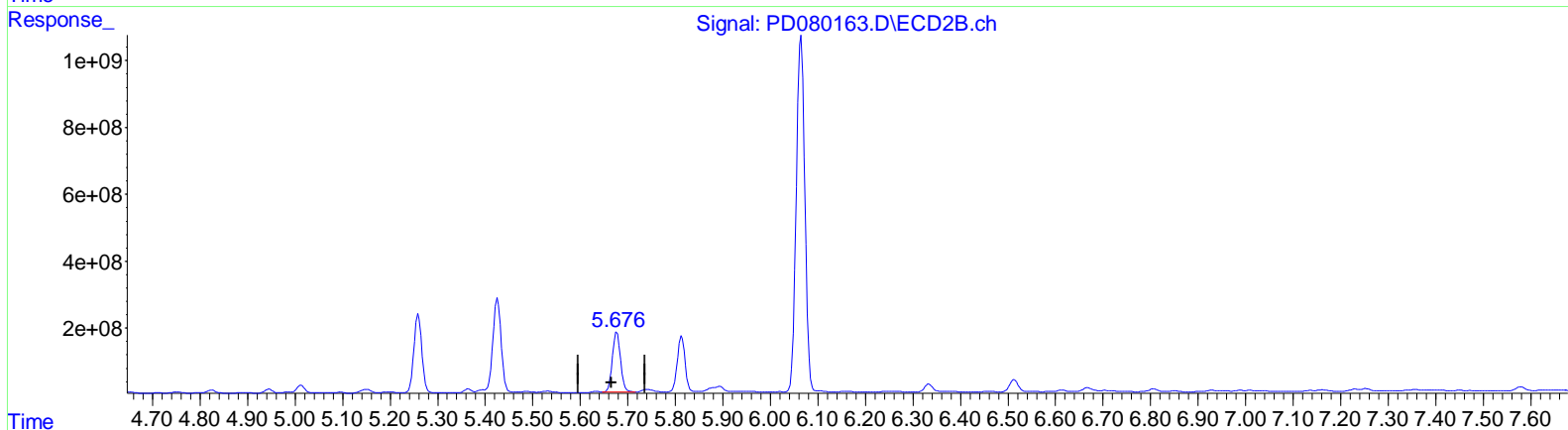
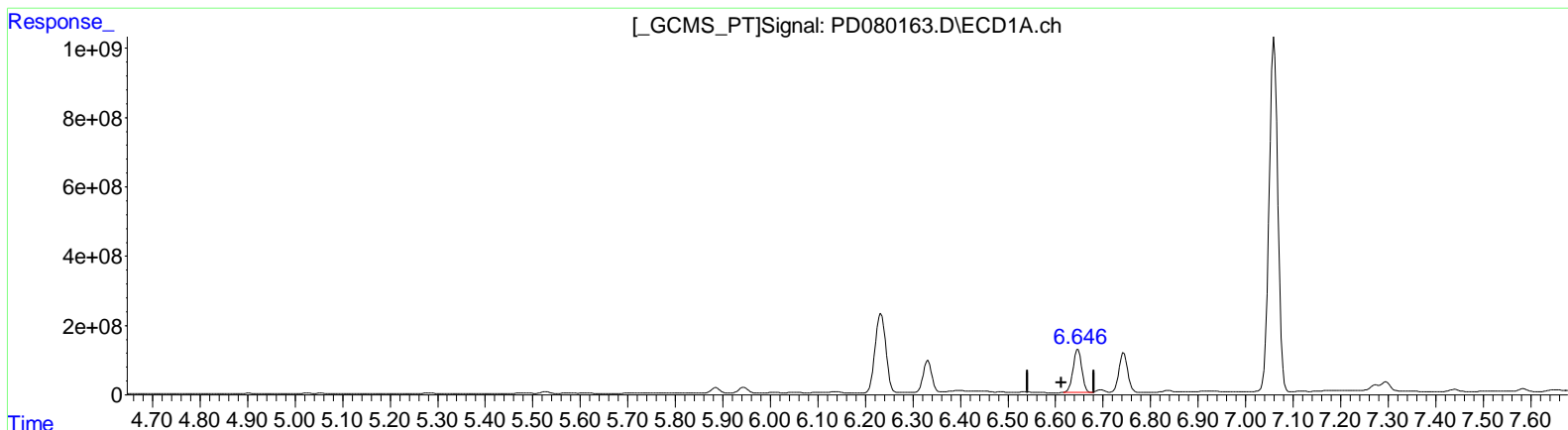
**Instrument :**  
 ECD\_D  
**ClientSampleId :**  
 BH3Q2

**Manual Integrations APPROVED**

Reviewed By : Abdul Mirza 12/18/2023  
 Supervised By : Ankita Jodhani 12/18/2023

Integration File signal 1: autoint1.e  
 Integration File signal 2: autoint2.e  
 Quant Time: Dec 17 20:57:57 2023  
 Quant Method : Z:\pestpcbsrv\HPCHEM1\ECD\_D\Method\PD121623CLP.M  
 Quant Title : GC Extractables  
 QLast Update : Sat Dec 16 03:10:23 2023  
 Response via : Initial Calibration  
 Integrator: ChemStation

Volume Inj. : 1 µl  
 Signal #1 Phase : ZB-MR1 Signal #2 Phase: ZB-MR2  
 Signal #1 Info : 30M x 0.32mm x 0.5 Signal #2 Info : 30M x 0.32mm x 0.25µm



QEdit

(14) Endrin (MA)  
 6.646min 1004.044 ng/ml m  
 response 1572630500

(14) Endrin #2 (MA)  
 5.676min 823.603 ng/ml m  
 response 2166967379