

Data Path : Z:\pestpcbsrv\HPCHEM1\ECD_D\Data\PD122023\
 Data File : PD080189.D
 Signal(s) : Signal #1: ECD1A.ch Signal #2: ECD2B.ch
 Acq On : 18 Dec 2023 11:44
 Operator : ARVAJ
 Sample : 05794-06DL 5X
 Misc :
 ALS Vial : 7 Sample Multiplier: 1

Instrument :

ECD_D

ClientSampleId :

BH3Q0DL

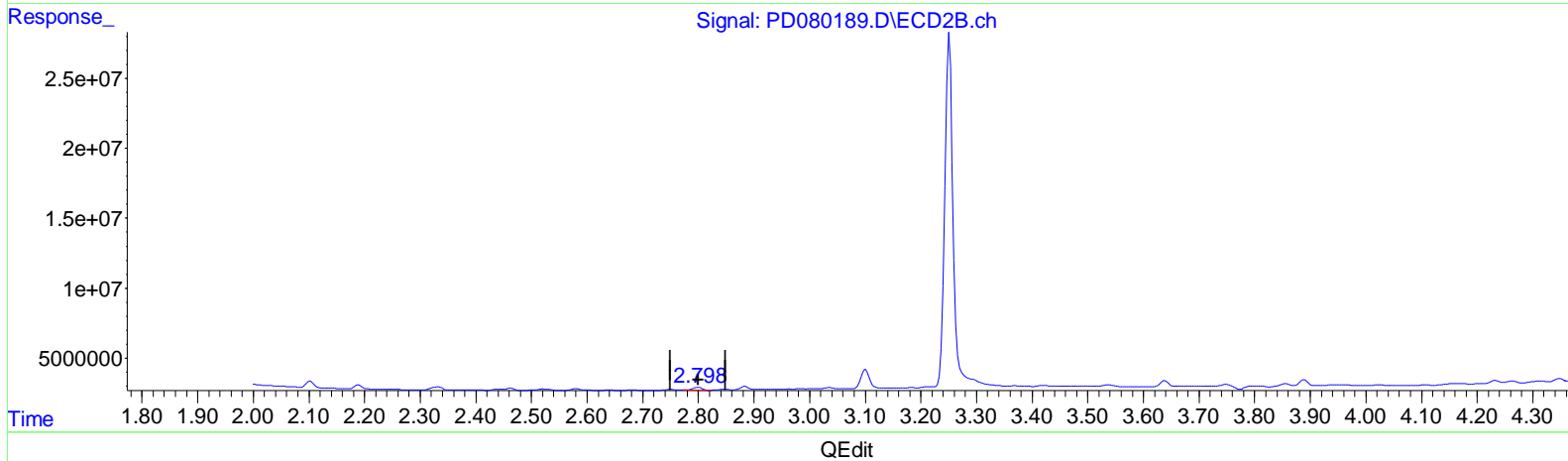
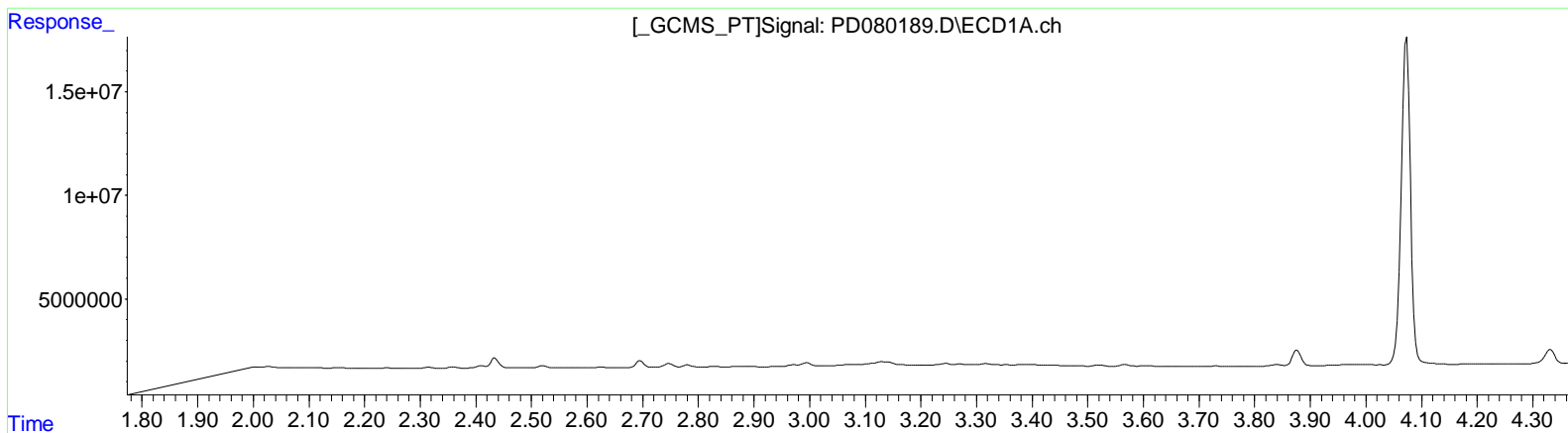
Manual IntegrationsAPPROVED

Reviewed By :Abdul Mirza 12/19/2023

Supervised By :Ankita Jodhani 12/19/2023

Integration File signal 1: autoint1.e
 Integration File signal 2: autoint2.e
 Quant Time: Dec 19 00:45:41 2023
 Quant Method : Z:\pestpcbsrv\HPCHEM1\ECD_D\Method\PD121623CLP.M
 Quant Title : GC Extractables
 QLast Update : Mon Dec 18 00:44:33 2023
 Response via : Initial Calibration
 Integrator: ChemStation

Volume Inj. : 1 µl
 Signal #1 Phase : ZB-MR1 Signal #2 Phase: ZB-MR2
 Signal #1 Info : 30M x 0.32mm x0.5 Signal #2 Info : 30M x 0.32mm x 0.25µm



(1) Tetrachloro-m-xylene (SA)
 0.000min 0.000 ng/ml
 response 0

(1) Tetrachloro-m-xylene #2 (SA)
 2.800min 1.051 ng/ml
 response 2337180

Data Path : Z:\pestpcbsrv\HPCHEM1\ECD_D\Data\PD122023\
 Data File : PD080189.D
 Signal(s) : Signal #1: ECD1A.ch Signal #2: ECD2B.ch
 Acq On : 18 Dec 2023 11:44
 Operator : ARVAJ
 Sample : 05794-06DL 5X
 Misc :
 ALS Vial : 7 Sample Multiplier: 1

Instrument :

ECD_D

ClientSampleId :

BH3Q0DL

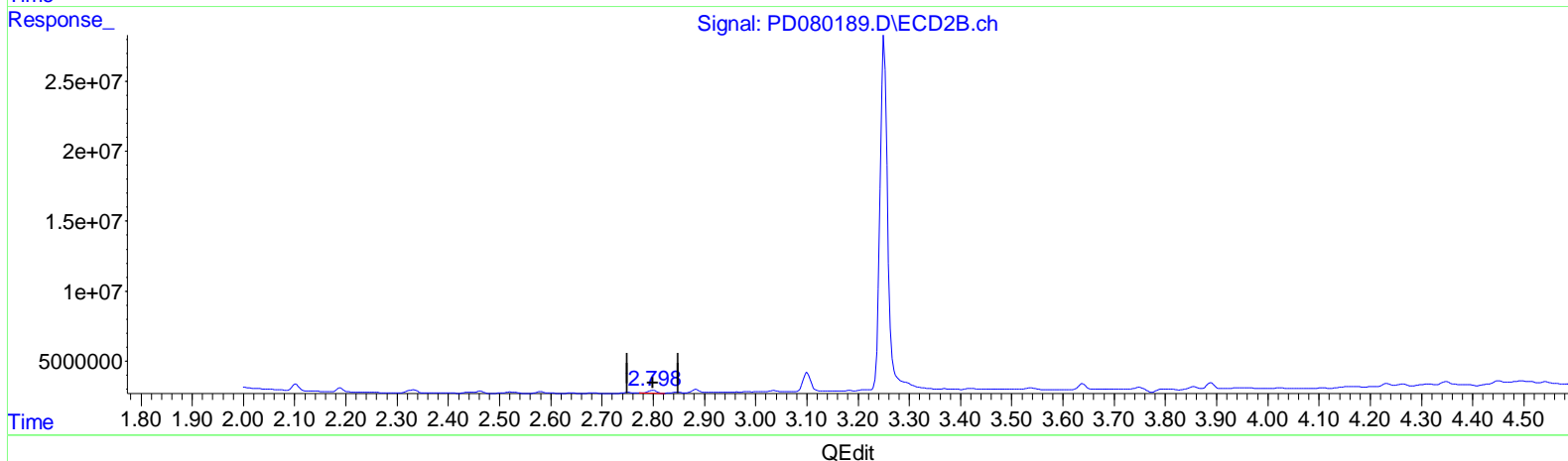
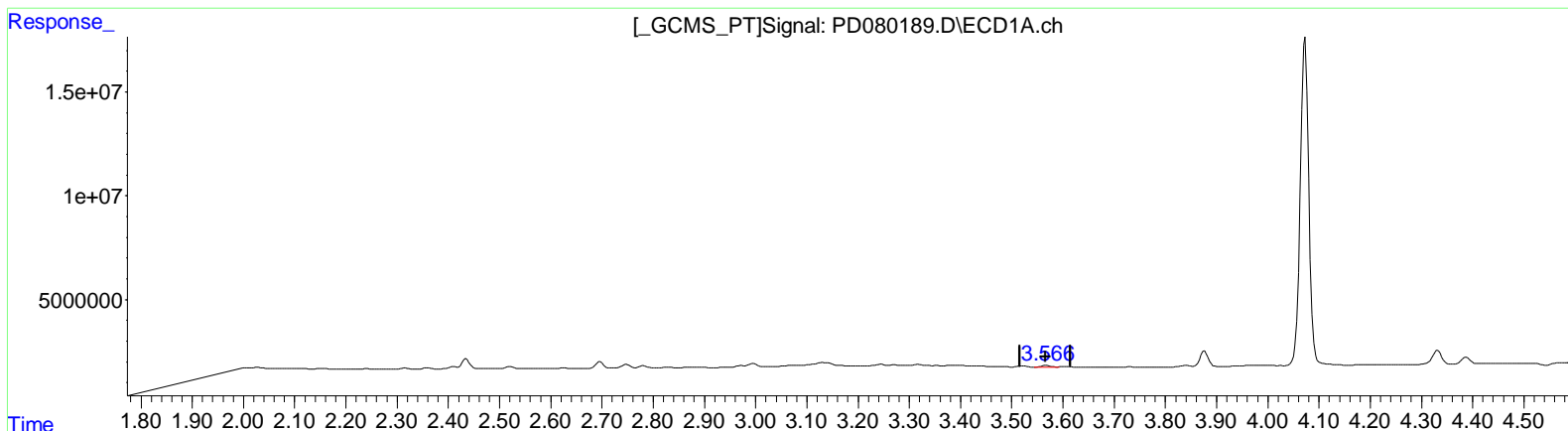
Manual IntegrationsAPPROVED

Reviewed By :Abdul Mirza 12/19/2023

Supervised By :Ankita Jodhani 12/19/2023

Integration File signal 1: autoint1.e
 Integration File signal 2: autoint2.e
 Quant Time: Dec 19 00:45:41 2023
 Quant Method : Z:\pestpcbsrv\HPCHEM1\ECD_D\Method\PD121623CLP.M
 Quant Title : GC Extractables
 QLast Update : Mon Dec 18 00:44:33 2023
 Response via : Initial Calibration
 Integrator: ChemStation

Volume Inj. : 1 µl
 Signal #1 Phase : ZB-MR1 Signal #2 Phase: ZB-MR2
 Signal #1 Info : 30M x 0.32mm x0.5 Signal #2 Info : 30M x 0.32mm x 0.25µm



(1) Tetrachloro-m-xylene (SA)

3.566min 0.808 ng/ml m

response 1032065

(1) Tetrachloro-m-xylene #2 (SA)

2.800min 1.051 ng/ml

response 2337180

Data Path : Z:\pestpcbsrv\HPCHEM1\ECD_D\Data\PD122023\
 Data File : PD080189.D
 Signal(s) : Signal #1: ECD1A.ch Signal #2: ECD2B.ch
 Acq On : 18 Dec 2023 11:44
 Operator : ARVAJ
 Sample : 05794-06DL 5X
 Misc :
 ALS Vial : 7 Sample Multiplier: 1

Instrument :

ECD_D

ClientSampleId :

BH3Q0DL

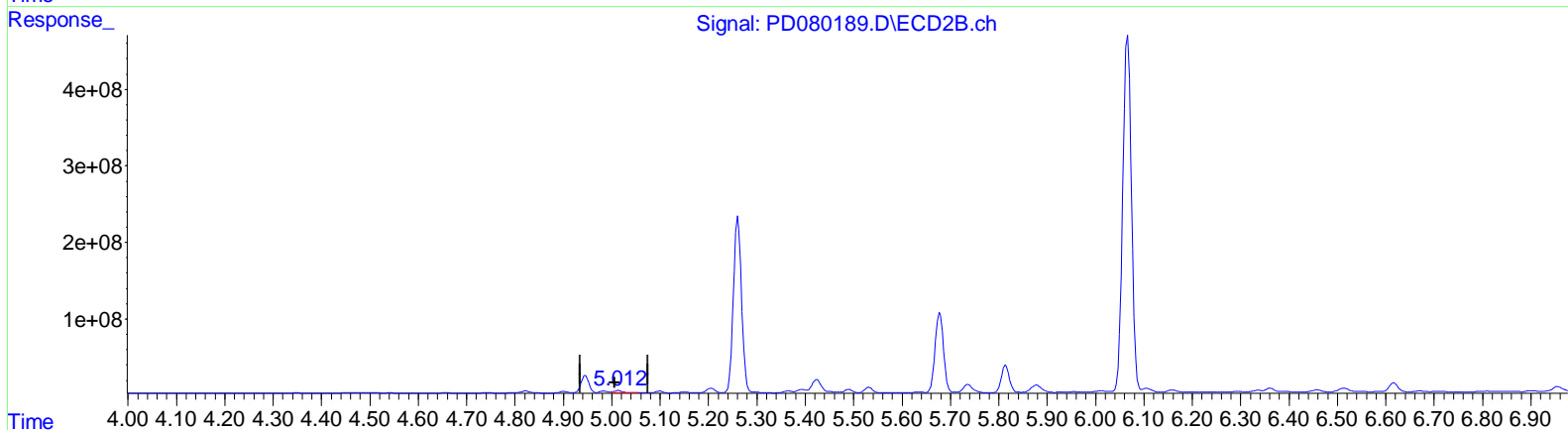
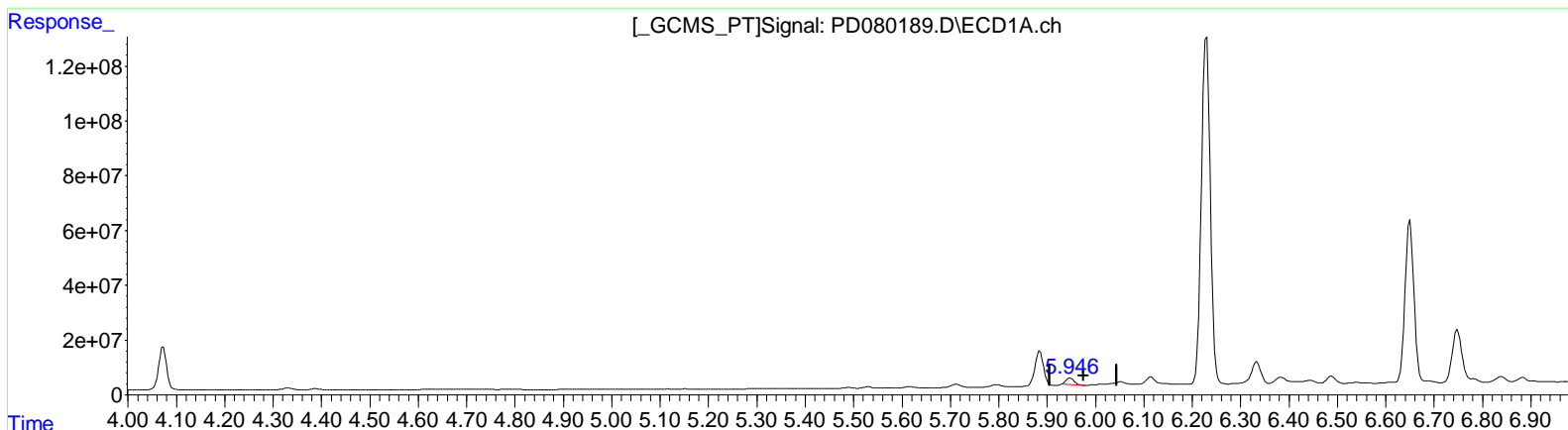
Manual Integrations APPROVED

Reviewed By : Abdul Mirza 12/19/2023

Supervised By : Ankita Jodhani 12/19/2023

Integration File signal 1: autoint1.e
 Integration File signal 2: autoint2.e
 Quant Time: Dec 19 00:45:41 2023
 Quant Method : Z:\pestpcbsrv\HPCHEM1\ECD_D\Method\PD121623CLP.M
 Quant Title : GC Extractables
 QLast Update : Mon Dec 18 00:44:33 2023
 Response via : Initial Calibration
 Integrator: ChemStation

Volume Inj. : 1 µl
 Signal #1 Phase : ZB-MR1 Signal #2 Phase: ZB-MR2
 Signal #1 Info : 30M x 0.32mm x 0.5 Signal #2 Info : 30M x 0.32mm x 0.25µm



QEdit

(10) trans-Chlordane (B)
 5.948min 12.390 ng/ml
 response 25427363

(10) trans-Chlordane #2 (B)
 5.014min 9.529 ng/ml
 response 31366875

Data Path : Z:\pestpcbsrv\HPCHEM1\ECD_D\Data\PD122023\
 Data File : PD080189.D
 Signal(s) : Signal #1: ECD1A.ch Signal #2: ECD2B.ch
 Acq On : 18 Dec 2023 11:44
 Operator : ARVAJ
 Sample : 05794-06DL 5X
 Misc :
 ALS Vial : 7 Sample Multiplier: 1

Instrument :

ECD_D

ClientSampleId :

BH3Q0DL

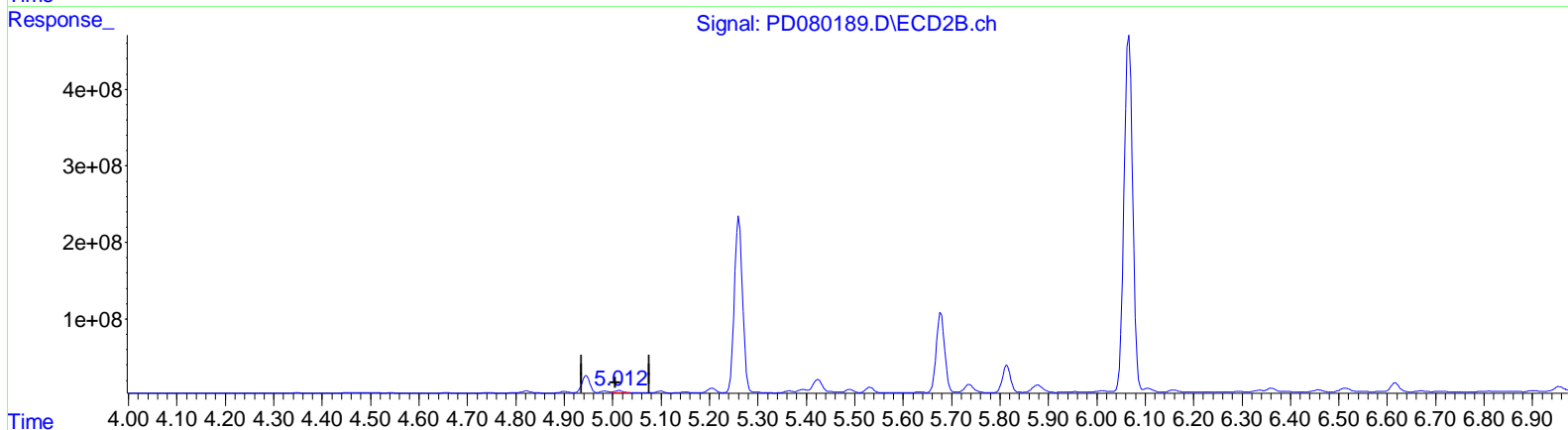
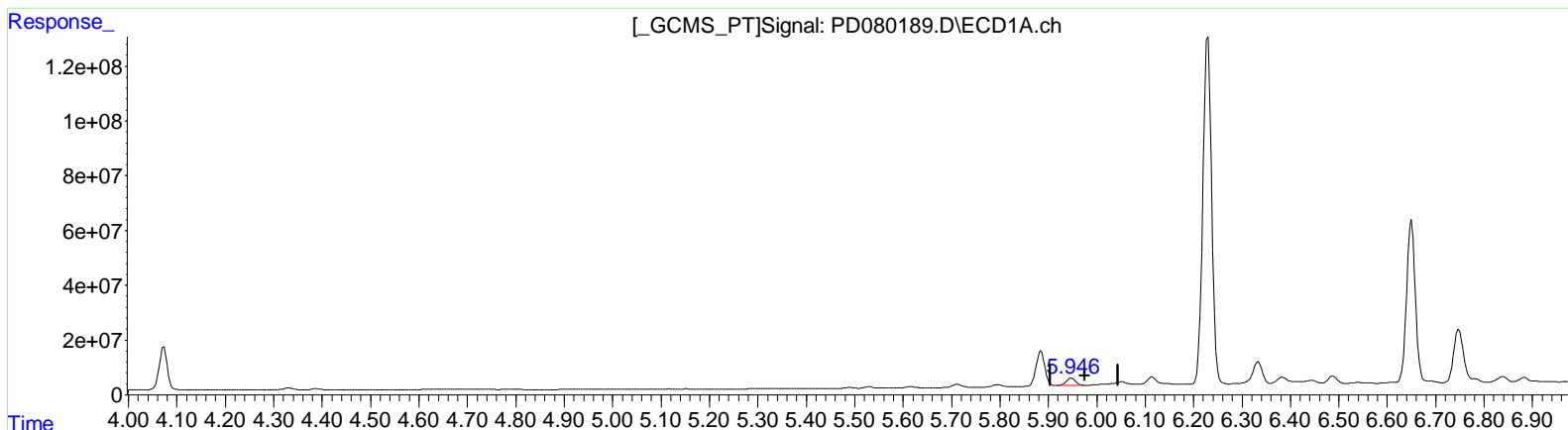
Manual Integrations APPROVED

Reviewed By : Abdul Mirza 12/19/2023

Supervised By : Ankita Jodhani 12/19/2023

Integration File signal 1: autoint1.e
 Integration File signal 2: autoint2.e
 Quant Time: Dec 19 00:45:41 2023
 Quant Method : Z:\pestpcbsrv\HPCHEM1\ECD_D\Method\PD121623CLP.M
 Quant Title : GC Extractables
 QLast Update : Mon Dec 18 00:44:33 2023
 Response via : Initial Calibration
 Integrator: ChemStation

Volume Inj. : 1 µl
 Signal #1 Phase : ZB-MR1 Signal #2 Phase: ZB-MR2
 Signal #1 Info : 30M x 0.32mm x 0.5 Signal #2 Info : 30M x 0.32mm x 0.25µm



QEdit

(10) trans-Chlordane (B)
 5.946min 17.080 ng/ml m
 response 35051707

(10) trans-Chlordane #2 (B)
 5.012min 8.994 ng/ml m
 response 29606072

Data Path : Z:\pestpcbsrv\HPCHEM1\ECD_D\Data\PD122023\
 Data File : PD080189.D
 Signal(s) : Signal #1: ECD1A.ch Signal #2: ECD2B.ch
 Acq On : 18 Dec 2023 11:44
 Operator : ARVAJ
 Sample : 05794-06DL 5X
 Misc :
 ALS Vial : 7 Sample Multiplier: 1

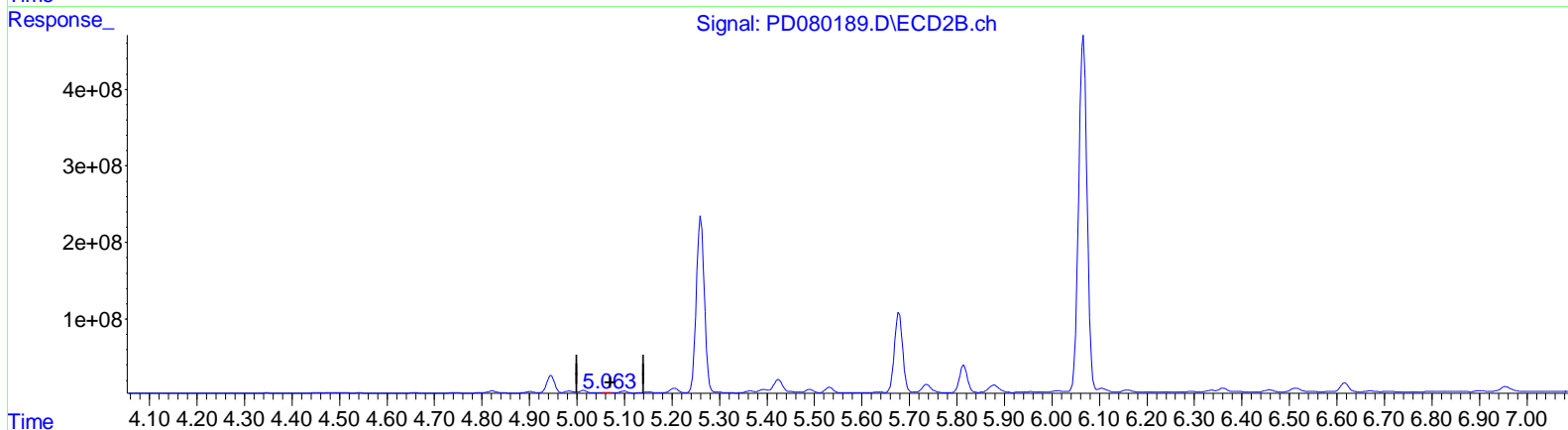
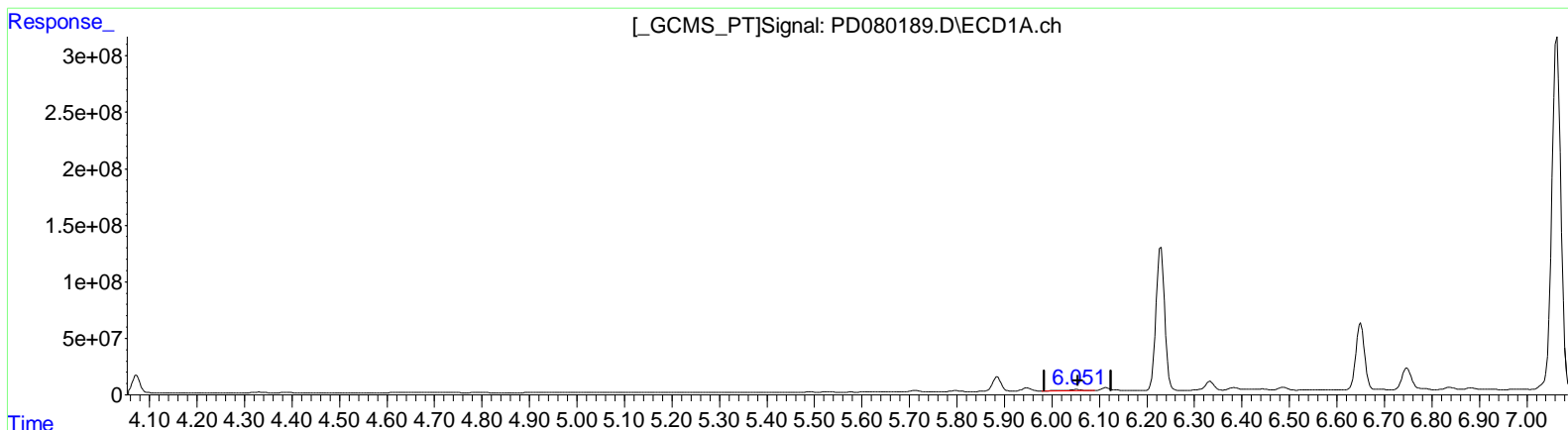
Instrument :
 ECD_D
ClientSampleId :
 BH3Q0DL

Manual Integrations APPROVED

Reviewed By : Abdul Mirza 12/19/2023
 Supervised By : Ankita Jodhani 12/19/2023

Integration File signal 1: autoint1.e
 Integration File signal 2: autoint2.e
 Quant Time: Dec 19 00:45:41 2023
 Quant Method : Z:\pestpcbsrv\HPCHEM1\ECD_D\Method\PD121623CLP.M
 Quant Title : GC Extractables
 QLast Update : Mon Dec 18 00:44:33 2023
 Response via : Initial Calibration
 Integrator: ChemStation

Volume Inj. : 1 µl
 Signal #1 Phase : ZB-MR1 Signal #2 Phase: ZB-MR2
 Signal #1 Info : 30M x 0.32mm x 0.5 Signal #2 Info : 30M x 0.32mm x 0.25µm



(11) cis-Chlordane (B)
 6.053min 10.380 ng/ml
 response 21788341

(11) cis-Chlordane #2 (B)
 5.061min 0.165 ng/ml
 response 556333

Data Path : Z:\pestpcbsrv\HPCHEM1\ECD_D\Data\PD122023\
 Data File : PD080189.D
 Signal(s) : Signal #1: ECD1A.ch Signal #2: ECD2B.ch
 Acq On : 18 Dec 2023 11:44
 Operator : ARVAJ
 Sample : 05794-06DL 5X
 Misc :
 ALS Vial : 7 Sample Multiplier: 1

Instrument :

ECD_D

ClientSampleId :

BH3Q0DL

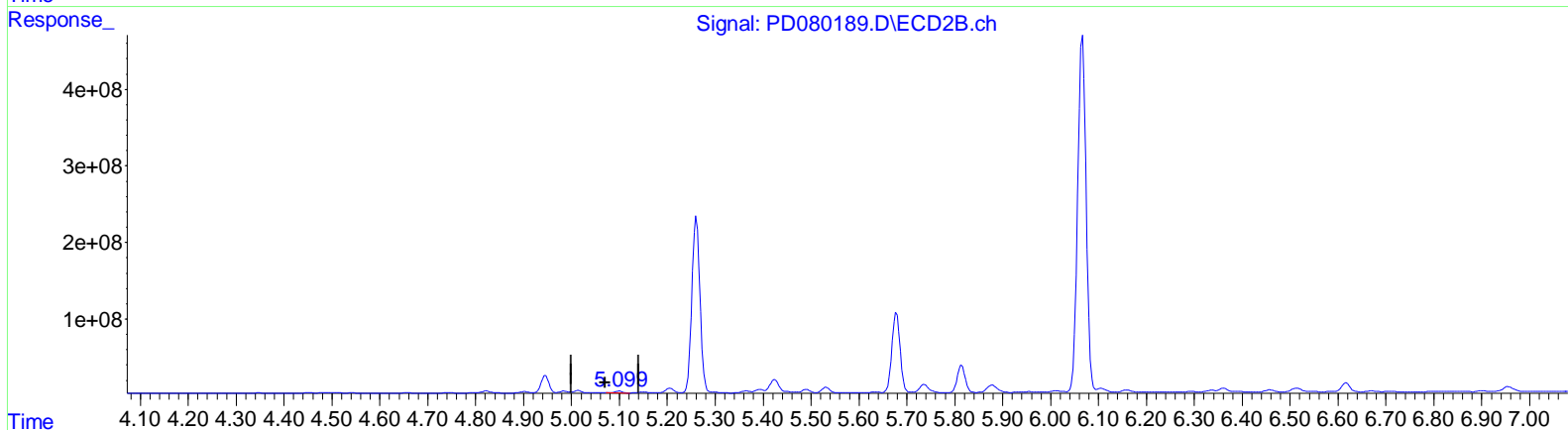
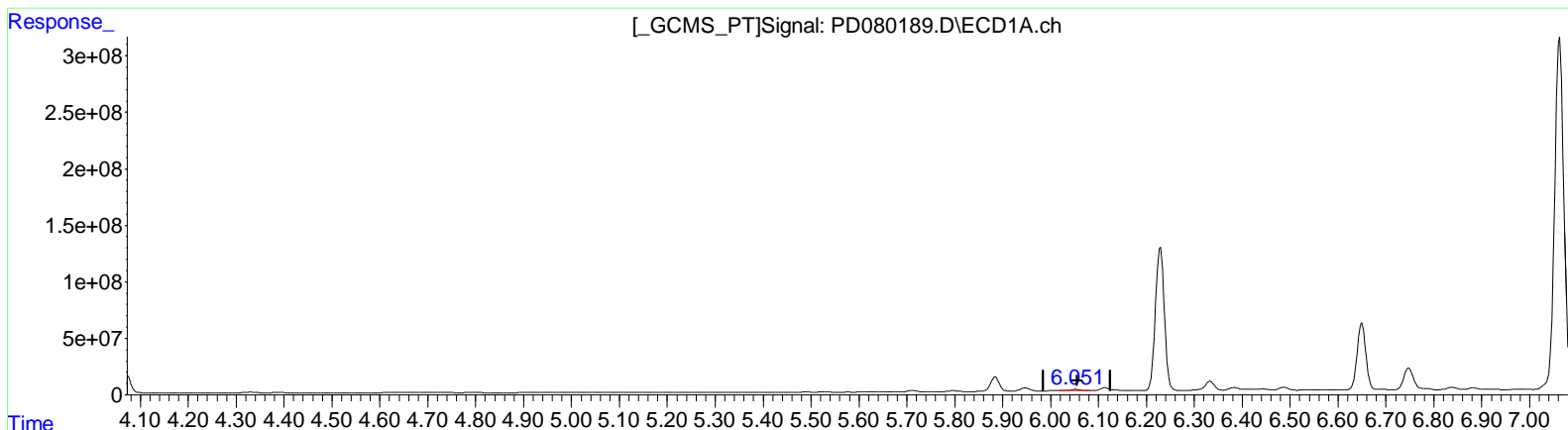
Manual IntegrationsAPPROVED

Reviewed By :Abdul Mirza 12/19/2023

Supervised By :Ankita Jodhani 12/19/2023

Integration File signal 1: autoint1.e
 Integration File signal 2: autoint2.e
 Quant Time: Dec 19 00:45:41 2023
 Quant Method : Z:\pestpcbsrv\HPCHEM1\ECD_D\Method\PD121623CLP.M
 Quant Title : GC Extractables
 QLast Update : Mon Dec 18 00:44:33 2023
 Response via : Initial Calibration
 Integrator: ChemStation

Volume Inj. : 1 µl
 Signal #1 Phase : ZB-MR1 Signal #2 Phase: ZB-MR2
 Signal #1 Info : 30M x 0.32mm x0.5 Signal #2 Info : 30M x 0.32mm x 0.25µm



QEdit

(11) cis-Chlordane (B)
 6.051min 6.353 ng/ml m
 response 13336089

(11) cis-Chlordane #2 (B)
 5.099min 8.629 ng/ml m
 response 29009444

Data Path : Z:\pestpcbsrv\HPCHEM1\ECD_D\Data\PD122023\
 Data File : PD080189.D
 Signal(s) : Signal #1: ECD1A.ch Signal #2: ECD2B.ch
 Acq On : 18 Dec 2023 11:44
 Operator : ARVAJ
 Sample : 05794-06DL 5X
 Misc :
 ALS Vial : 7 Sample Multiplier: 1

Instrument :

ECD_D

ClientSampleId :

BH3Q0DL

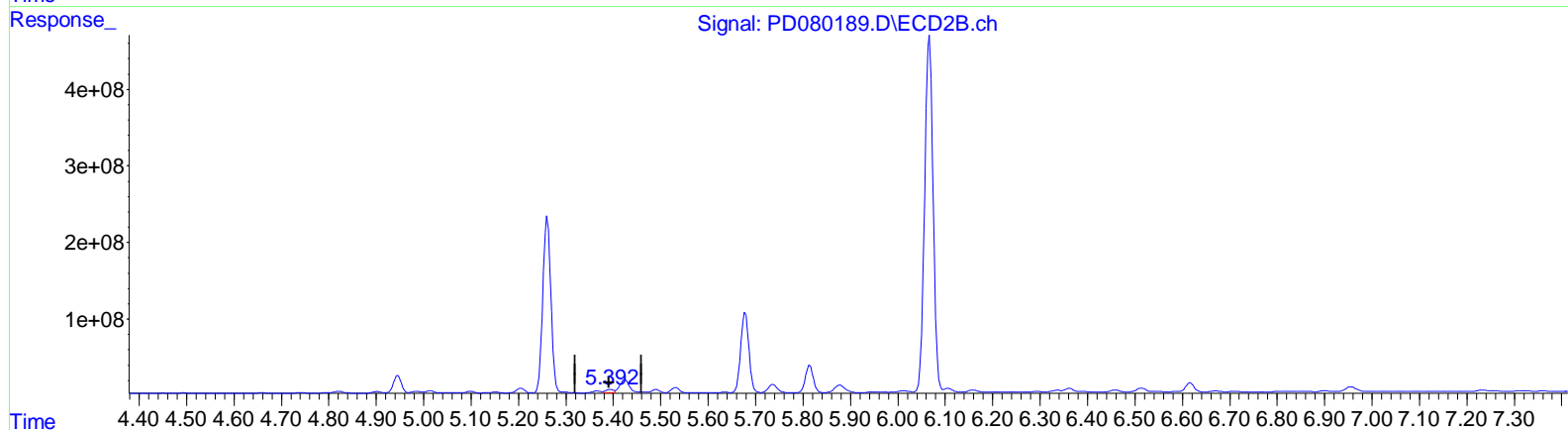
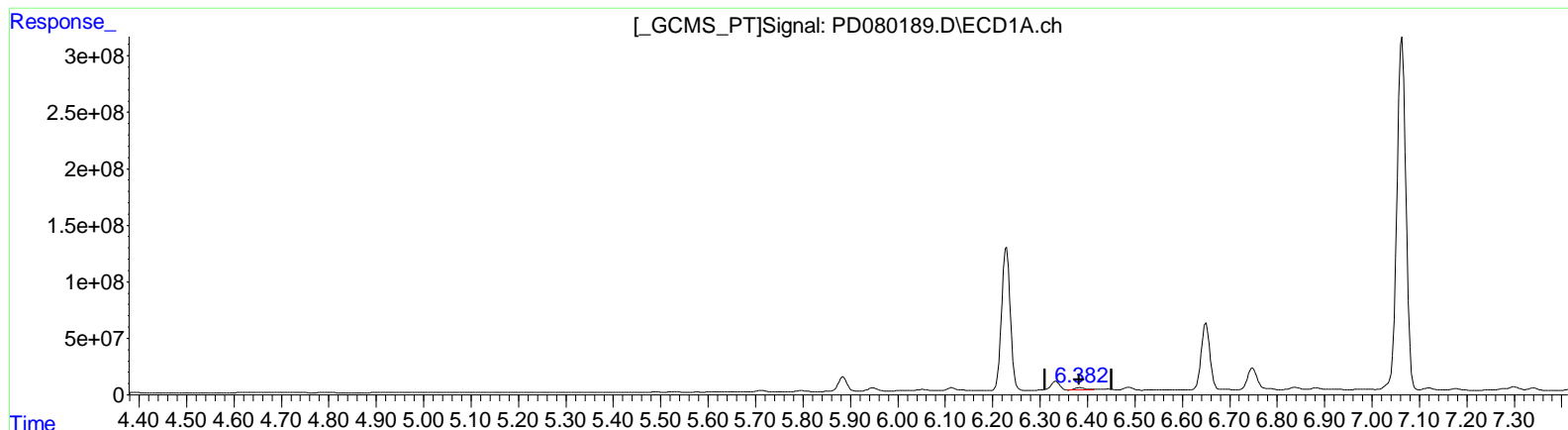
Manual Integrations APPROVED

Reviewed By : Abdul Mirza 12/19/2023

Supervised By : Ankita Jodhani 12/19/2023

Integration File signal 1: autoint1.e
 Integration File signal 2: autoint2.e
 Quant Time: Dec 19 00:45:41 2023
 Quant Method : Z:\pestpcbsrv\HPCHEM1\ECD_D\Method\PD121623CLP.M
 Quant Title : GC Extractables
 QLast Update : Mon Dec 18 00:44:33 2023
 Response via : Initial Calibration
 Integrator: ChemStation

Volume Inj. : 1 µl
 Signal #1 Phase : ZB-MR1 Signal #2 Phase: ZB-MR2
 Signal #1 Info : 30M x 0.32mm x 0.5 Signal #2 Info : 30M x 0.32mm x 0.25µm



QEdit

(13) Dieldrin (MA)
 6.382min 14.495 ng/ml m
 response 26975756

(13) Dieldrin #2 (MA)
 5.392min 18.890 ng/ml m
 response 56612525

Data Path : Z:\pestpcbsrv\HPCHEM1\ECD_D\Data\PD122023\
 Data File : PD080189.D
 Signal(s) : Signal #1: ECD1A.ch Signal #2: ECD2B.ch
 Acq On : 18 Dec 2023 11:44
 Operator : ARVAJ
 Sample : 05794-06DL 5X
 Misc :
 ALS Vial : 7 Sample Multiplier: 1

Instrument :

ECD_D

ClientSampleId :

BH3Q0DL

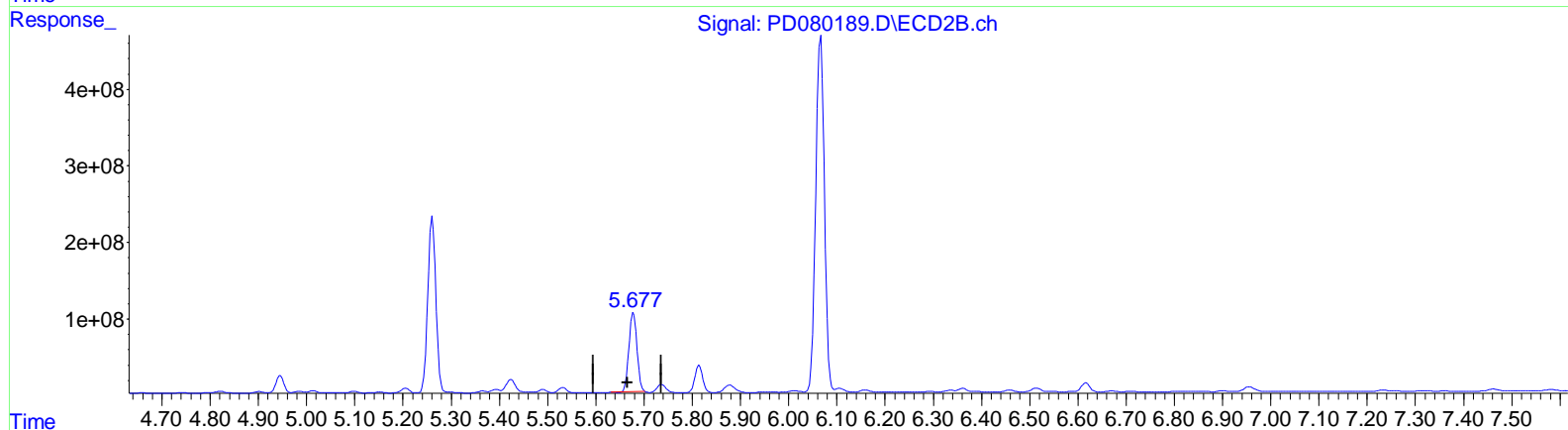
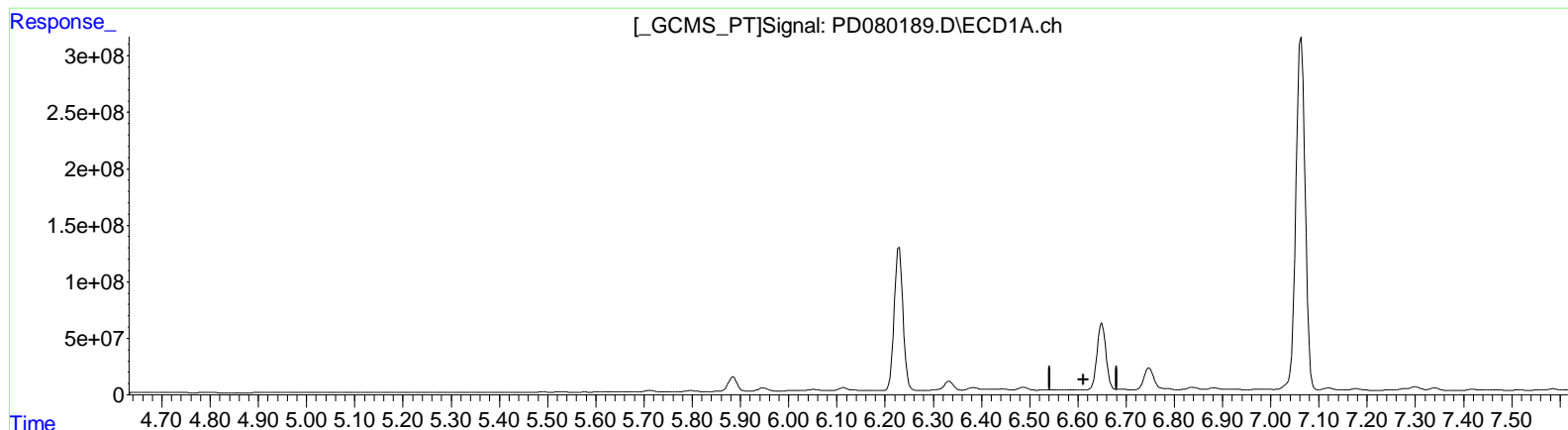
Manual IntegrationsAPPROVED

Reviewed By :Abdul Mirza 12/19/2023

Supervised By :Ankita Jodhani 12/19/2023

Integration File signal 1: autoint1.e
 Integration File signal 2: autoint2.e
 Quant Time: Dec 19 00:45:41 2023
 Quant Method : Z:\pestpcbsrv\HPCHEM1\ECD_D\Method\PD121623CLP.M
 Quant Title : GC Extractables
 QLast Update : Mon Dec 18 00:44:33 2023
 Response via : Initial Calibration
 Integrator: ChemStation

Volume Inj. : 1 µl
 Signal #1 Phase : ZB-MR1 Signal #2 Phase: ZB-MR2
 Signal #1 Info : 30M x 0.32mm x0.5 Signal #2 Info : 30M x 0.32mm x 0.25µm



QEdit

(14) Endrin (MA)
 6.611min -0.112 ng/ml
 response -175593

(14) Endrin #2 (MA)
 5.678min 457.370 ng/ml
 response 1203378874

Data Path : Z:\pestpcbsrv\HPCHEM1\ECD_D\Data\PD122023\
 Data File : PD080189.D
 Signal(s) : Signal #1: ECD1A.ch Signal #2: ECD2B.ch
 Acq On : 18 Dec 2023 11:44
 Operator : ARVAJ
 Sample : 05794-06DL 5X
 Misc :
 ALS Vial : 7 Sample Multiplier: 1

Instrument :

ECD_D

ClientSampleId :

BH3Q0DL

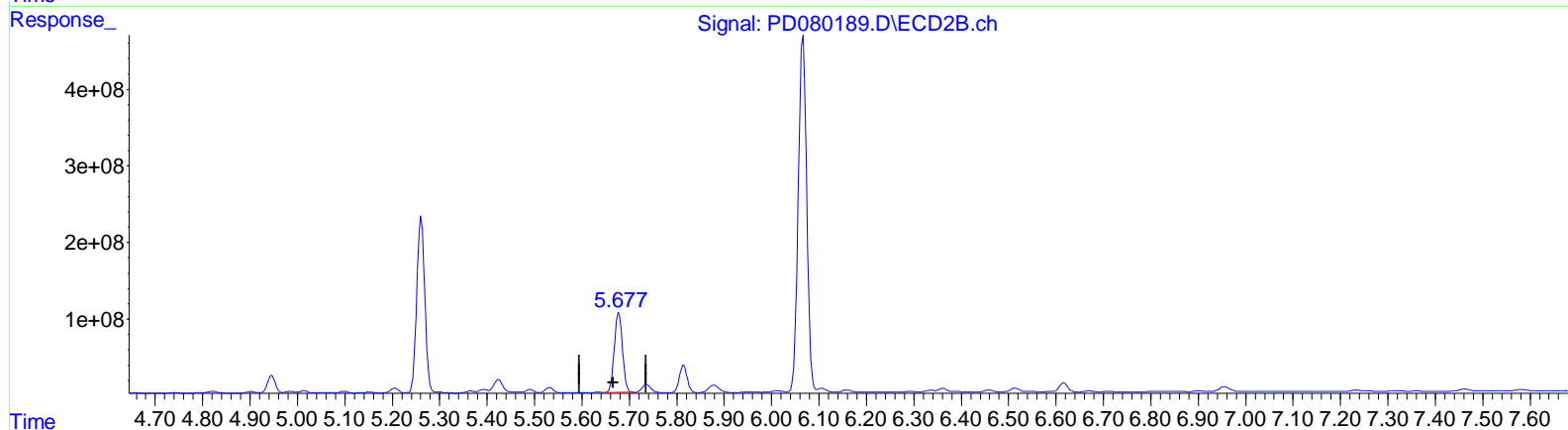
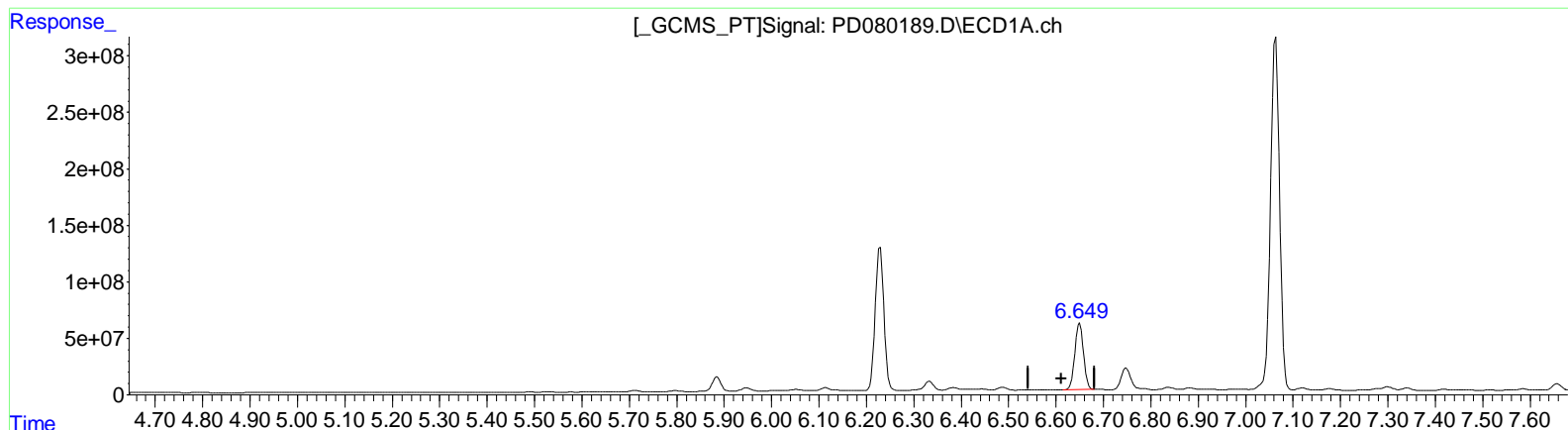
Manual IntegrationsAPPROVED

Reviewed By :Abdul Mirza 12/19/2023

Supervised By :Ankita Jodhani 12/19/2023

Integration File signal 1: autoint1.e
 Integration File signal 2: autoint2.e
 Quant Time: Dec 19 00:45:41 2023
 Quant Method : Z:\pestpcbsrv\HPCHEM1\ECD_D\Method\PD121623CLP.M
 Quant Title : GC Extractables
 QLast Update : Mon Dec 18 00:44:33 2023
 Response via : Initial Calibration
 Integrator: ChemStation

Volume Inj. : 1 µl
 Signal #1 Phase : ZB-MR1 Signal #2 Phase: ZB-MR2
 Signal #1 Info : 30M x 0.32mm x0.5 Signal #2 Info : 30M x 0.32mm x 0.25µm



QEdit

(14) Endrin (MA)
 6.649min 473.390 ng/ml m
 response 741469453

(14) Endrin #2 (MA)
 5.677min 473.220 ng/ml m
 response 1245082480

Data Path : Z:\pestpcbsrv\HPCHEM1\ECD_D\Data\PD122023\
 Data File : PD080189.D
 Signal(s) : Signal #1: ECD1A.ch Signal #2: ECD2B.ch
 Acq On : 18 Dec 2023 11:44
 Operator : ARVAJ
 Sample : 05794-06DL 5X
 Misc :
 ALS Vial : 7 Sample Multiplier: 1

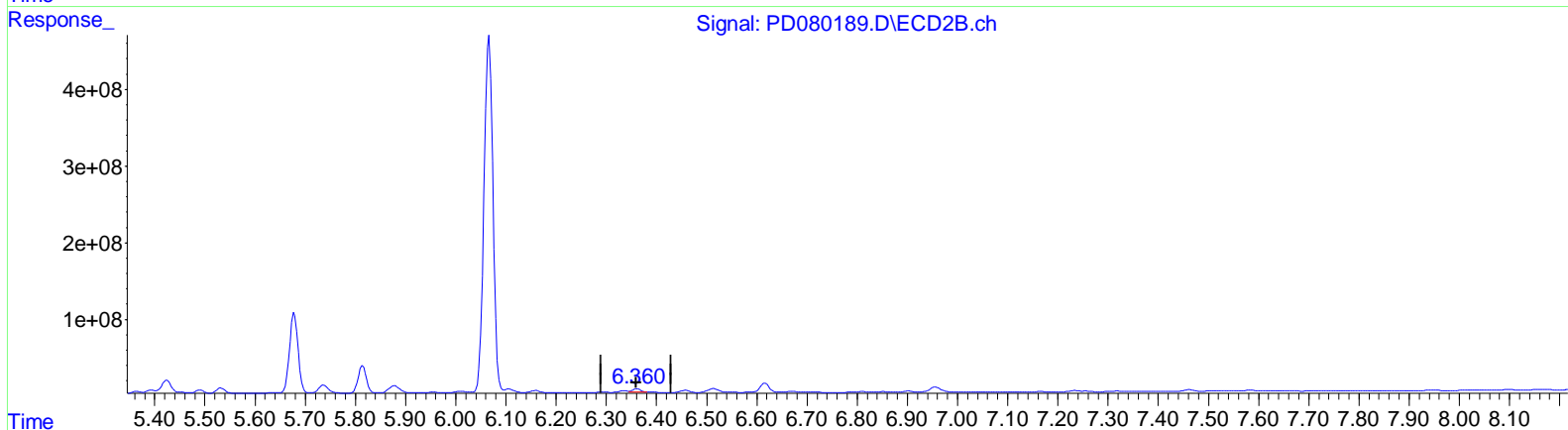
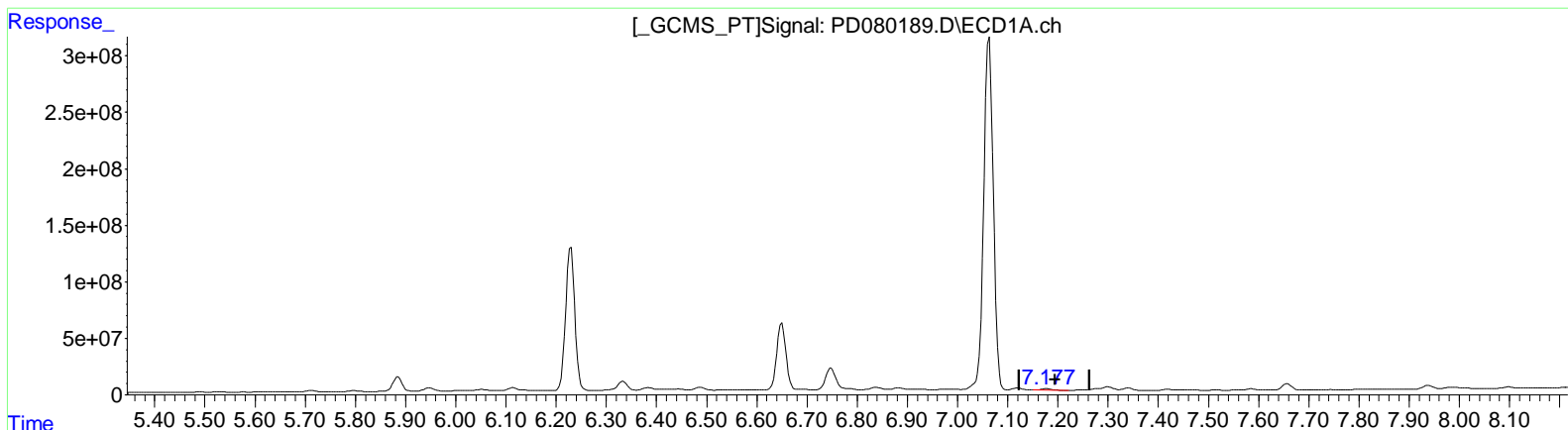
Instrument :
 ECD_D
ClientSampleId :
 BH3Q0DL

Manual Integrations APPROVED

Reviewed By : Abdul Mirza 12/19/2023
 Supervised By : Ankita Jodhani 12/19/2023

Integration File signal 1: autoint1.e
 Integration File signal 2: autoint2.e
 Quant Time: Dec 19 00:45:41 2023
 Quant Method : Z:\pestpcbsrv\HPCHEM1\ECD_D\Method\PD121623CLP.M
 Quant Title : GC Extractables
 QLast Update : Mon Dec 18 00:44:33 2023
 Response via : Initial Calibration
 Integrator: ChemStation

Volume Inj. : 1 µl
 Signal #1 Phase : ZB-MR1 Signal #2 Phase: ZB-MR2
 Signal #1 Info : 30M x 0.32mm x 0.5 Signal #2 Info : 30M x 0.32mm x 0.25µm



QEdit

(19) Endosulfan Sulfate (B)
 7.178min 9.436 ng/ml
 response 17306614

(19) Endosulfan Sulfate #2 (B)
 6.360min 16.506 ng/ml m
 response 46296445