

Data Path : Z:\pestpcbsrv\HPCHEM1\ECD\_D\Data\PD122024\  
 Data File : PD087203.D  
 Signal(s) : Signal #1: ECD1A.ch Signal #2: ECD2B.ch  
 Acq On : 19 Dec 2024 17:12  
 Operator : AR\AJ  
 Sample : HEXANE  
 Misc :  
 ALS Vial : 1 Sample Multiplier: 1

Instrument :  
 ECD\_D  
 ClientSampleId :

Integration File signal 1: autoint1.e  
 Integration File signal 2: autoint2.e  
 Quant Time: Dec 20 02:39:44 2024  
 Quant Method : Z:\pestpcbsrv\HPCHEM1\ECD\_D\Method\PD122024CLP.M  
 Quant Title : GC Extractables  
 QLast Update : Fri Dec 20 02:32:54 2024  
 Response via : Initial Calibration  
 Integrator: ChemStation

Volume Inj. : 1 µl  
 Signal #1 Phase : ZB-MR2 Signal #2 Phase: ZB-MR2  
 Signal #1 Info : 30M x 0.32mm x0.5 Signal #2 Info : 30M x 0.32mm x 0.25µm

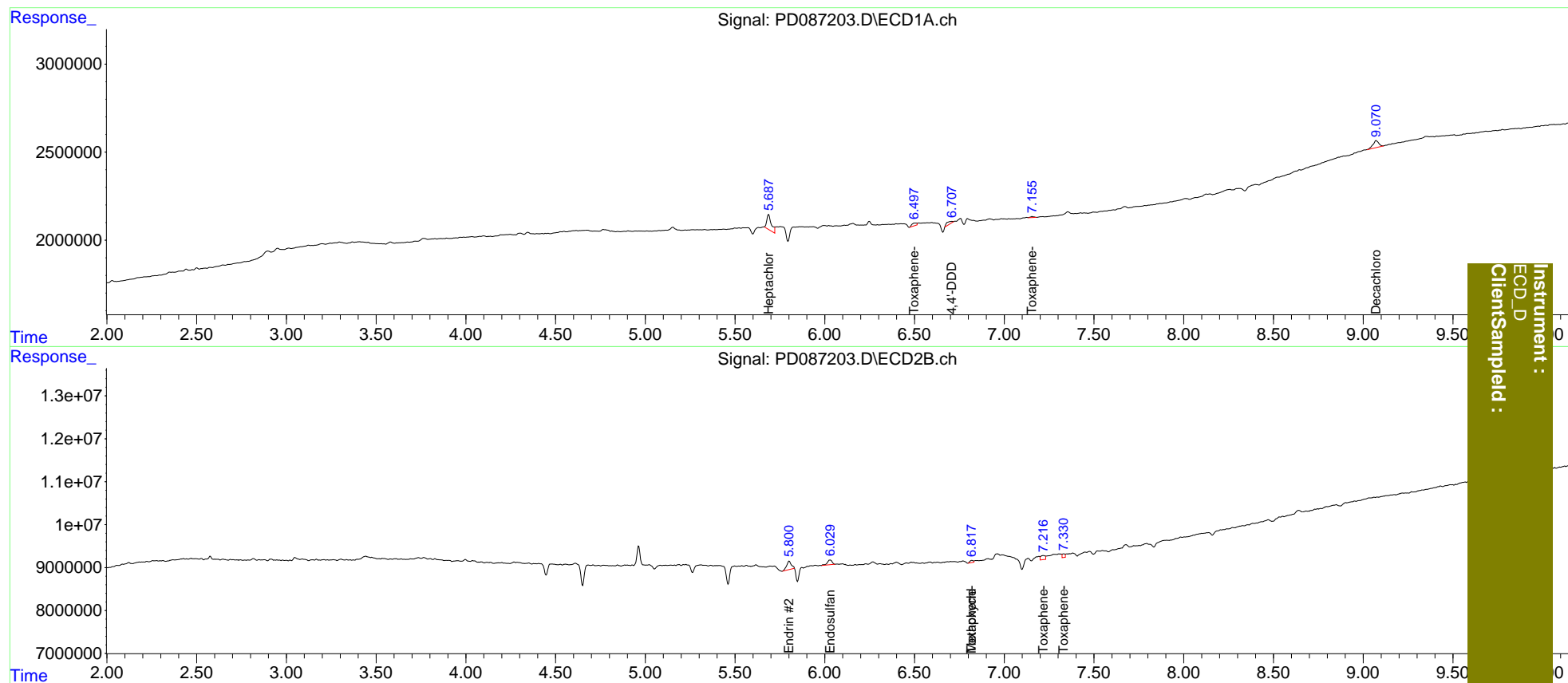
	Compound	RT#1	RT#2	Resp#1	Resp#2	ng/ml	ng/ml	
-----								
System Monitoring Compounds								
1)	SA Tetrachlo...	3.581f	2.916f	3129	577713	<MDL	<MDL	#
27)	SA Decachlor...	9.073	8.101	872602	187534	0.286	<MDL	#
Target Compounds								
2)	A alpha-BHC	4.034f	0.000	72746	0	<MDL	N.D.	#
3)	MA gamma-BHC...	4.346	3.737	18501	260547	<MDL	<MDL	#
4)	MA Heptachlor	4.904f	0.000	33369	0	<MDL	N.D.	#
6)	B beta-BHC	4.528	3.998f	57842	433020	<MDL	<MDL	#
7)	B delta-BHC	4.766	4.269	217189	70810	<MDL	<MDL	#
8)	B Heptachlo...	5.687	0.000	1502130	0	0.421	N.D.	#
10)	B trans-Chl...	5.902f	0.000	96304	0	<MDL	N.D.	#
13)	MA Dieldrin	6.358	5.521	42797	520571	<MDL	<MDL	#
14)	MA Endrin	6.525f	5.802	103394	3736073	<MDL	0.270	#
15)	B Endosulfa...	6.796	6.030f	-216056	2030817	N.D.	0.151	
16)	A 4,4'-DDD	6.710	5.872f	312836	293152	0.121	<MDL	#
17)	MA 4,4'-DDT	0.000	6.229f	0	250229	N.D.	<MDL	#
18)	B Endrin al...	6.920	6.269	112596	933720	<MDL	<MDL	#
19)	B Endosulfa...	7.156	0.000	79255	0	<MDL	N.D.	#
20)	A Methoxychlor	7.496	6.820f	3800	617292	<MDL	0.106	#
23)	Toxaphene-2	6.501f	0.000	262879	0	8.447	N.D.	#
24)	Toxaphene-3	0.000	6.820f	0	617292	N.D.	2.165	
25)	Toxaphene-4	7.156	7.218	79255	1642825	1.227	8.216	#
26)	Toxaphene-5	0.000	7.332	0	908360	N.D.	6.115	

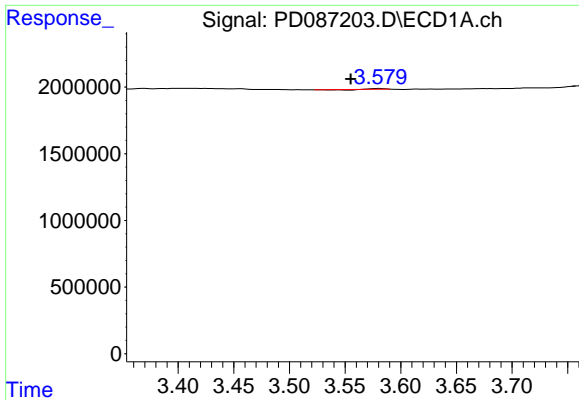
(f)=RT Delta > 1/2 Window (#)=Amounts differ by > 25% (m)=manual int.

Data Path : Z:\pestpcbsrv\HPCHEM1\ECD\_D\Data\PD122024\  
 Data File : PD087203.D  
 Signal(s) : Signal #1: ECD1A.ch Signal #2: ECD2B.ch  
 Acq On : 19 Dec 2024 17:12  
 Operator : AR\AJ  
 Sample : HEXANE  
 Misc :  
 ALS Vial : 1 Sample Multiplier: 1

Integration File signal 1: autoint1.e  
 Integration File signal 2: autoint2.e  
 Quant Time: Dec 20 02:39:44 2024  
 Quant Method : Z:\pestpcbsrv\HPCHEM1\ECD\_D\Method\PD122024CLP.M  
 Quant Title : GC Extractables  
 QLast Update : Fri Dec 20 02:32:54 2024  
 Response via : Initial Calibration  
 Integrator: ChemStation

Volume Inj. : 1 µl  
 Signal #1 Phase : ZB-MR1 Signal #2 Phase: ZB-MR2  
 Signal #1 Info : 30M x 0.32mm x0.5 Signal #2 Info : 30M x 0.32mm x 0.25µm

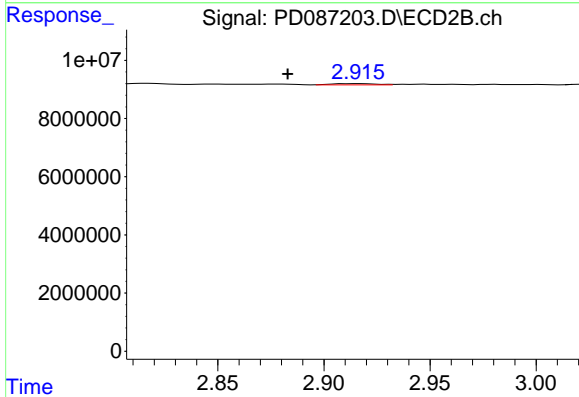




#1 Tetrachloro-m-xylene

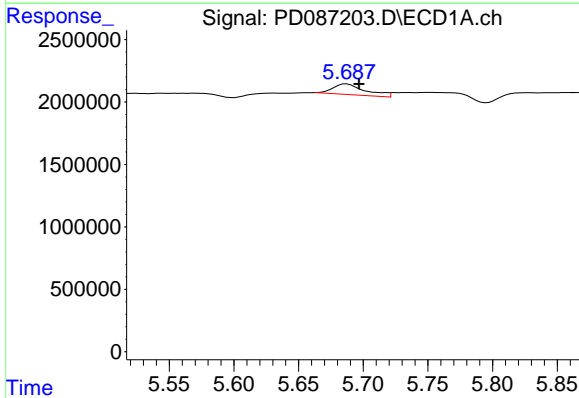
R.T.: 3.581 min  
 Delta R.T.: 0.026 min  
 Response: 3129  
 Conc: N.D.

Instrument :  
 ECD\_D  
 ClientSampleId :



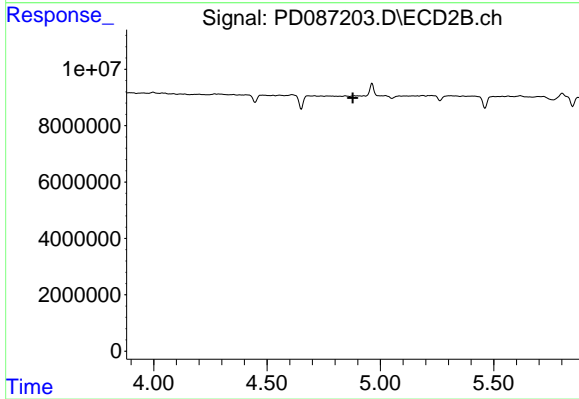
#1 Tetrachloro-m-xylene

R.T.: 2.916 min  
 Delta R.T.: 0.033 min  
 Response: 577713  
 Conc: N.D.



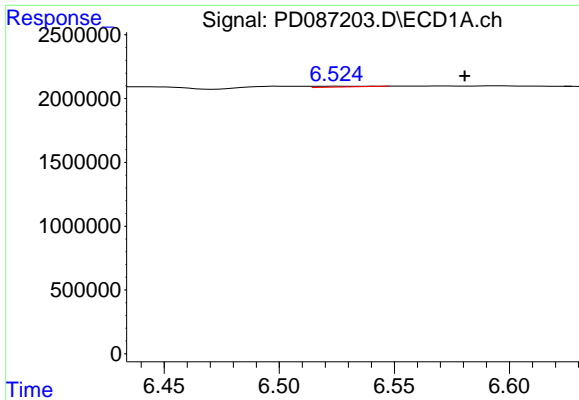
#8 Heptachlor epoxide

R.T.: 5.687 min  
 Delta R.T.: -0.010 min  
 Response: 1502130  
 Conc: 0.42 ng/ml



#8 Heptachlor epoxide

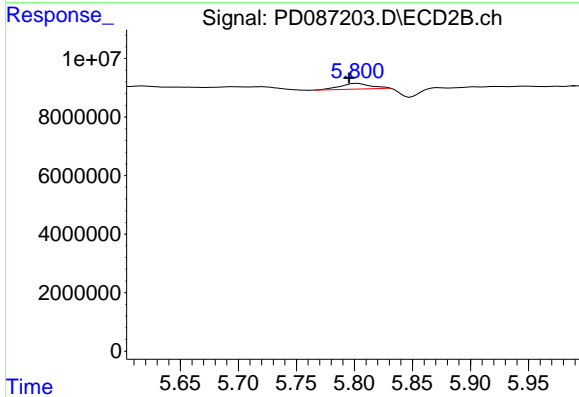
R.T.: 0.000 min  
 Exp R.T. : 4.878 min  
 Response: 0  
 Conc: N.D.



#14 Endrin

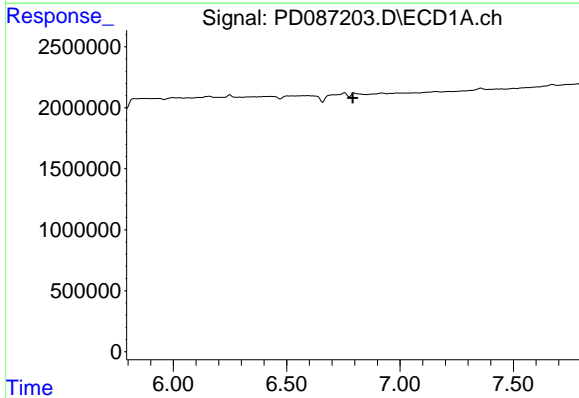
R.T.: 6.525 min  
 Delta R.T.: -0.056 min  
 Response: 103394  
 Conc: N.D.

Instrument :  
 ECD\_D  
 ClientSampleId :



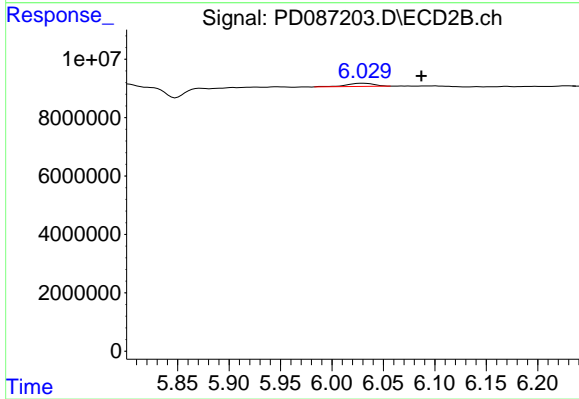
#14 Endrin

R.T.: 5.802 min  
 Delta R.T.: 0.006 min  
 Response: 3736073  
 Conc: 0.27 ng/ml



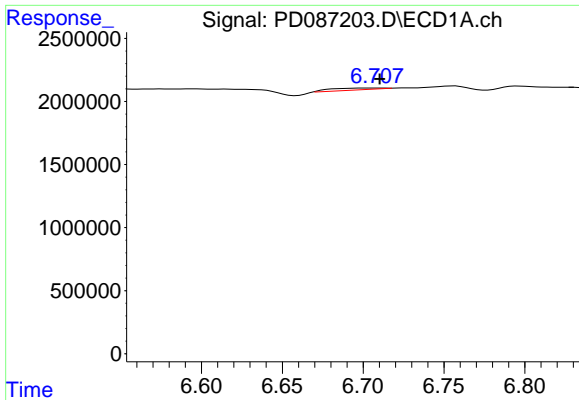
#15 Endosulfan II

R.T.: 6.796 min  
 Delta R.T.: 0.005 min  
 Response: -216056  
 Conc: N.D.



#15 Endosulfan II

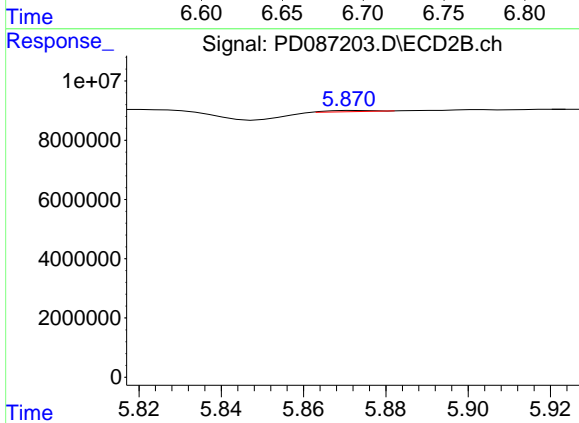
R.T.: 6.030 min  
 Delta R.T.: -0.057 min  
 Response: 2030817  
 Conc: 0.15 ng/ml



#16 4,4'-DDD

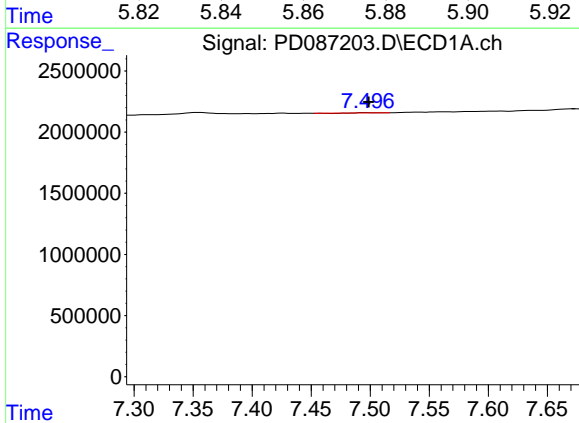
R.T.: 6.710 min  
 Delta R.T.: 0.000 min  
 Response: 312836  
 Conc: 0.12 ng/ml

Instrument :  
 ECD\_D  
 ClientSampleId :



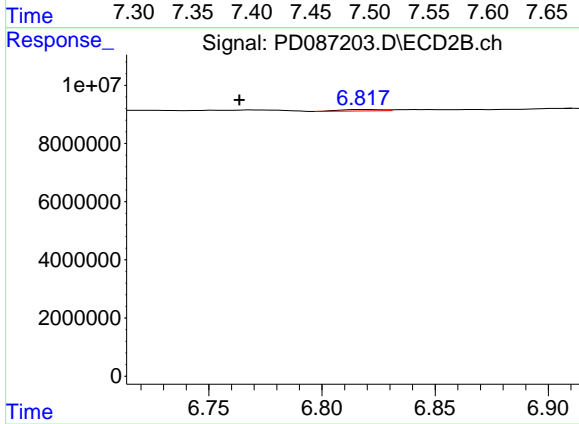
#16 4,4'-DDD

R.T.: 5.872 min  
 Delta R.T.: -0.065 min  
 Response: 293152  
 Conc: N.D.



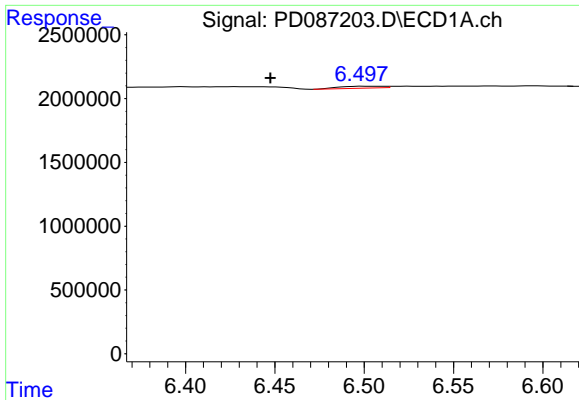
#20 Methoxychlor

R.T.: 7.496 min  
 Delta R.T.: -0.003 min  
 Response: 3800  
 Conc: N.D.



#20 Methoxychlor

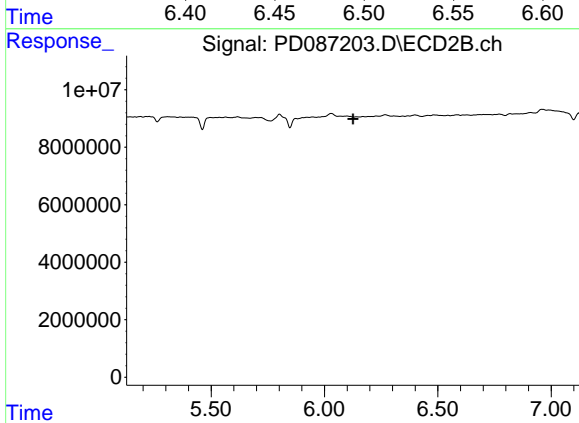
R.T.: 6.820 min  
 Delta R.T.: 0.056 min  
 Response: 617292  
 Conc: 0.11 ng/ml



#23 Toxaphene-2

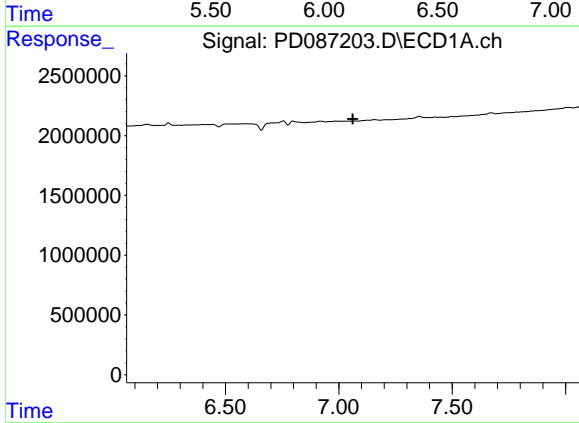
R.T.: 6.501 min  
 Delta R.T.: 0.054 min  
 Response: 262879  
 Conc: 8.45 ng/ml

Instrument : ECD\_D  
 ClientSampleId :



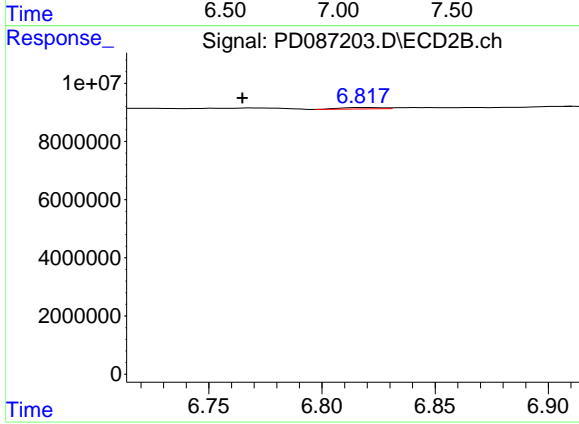
#23 Toxaphene-2

R.T.: 0.000 min  
 Exp R.T. : 6.126 min  
 Response: 0  
 Conc: N.D.



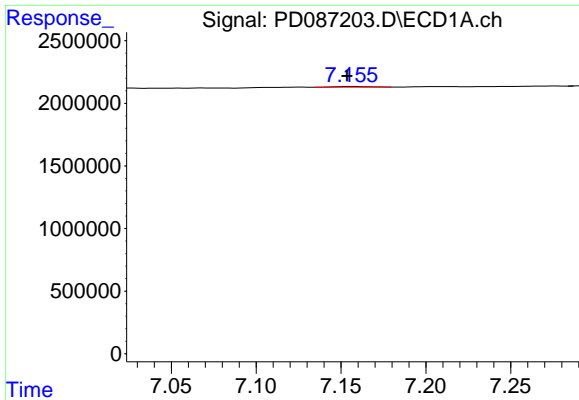
#24 Toxaphene-3

R.T.: 0.000 min  
 Exp R.T. : 7.062 min  
 Response: 0  
 Conc: N.D.



#24 Toxaphene-3

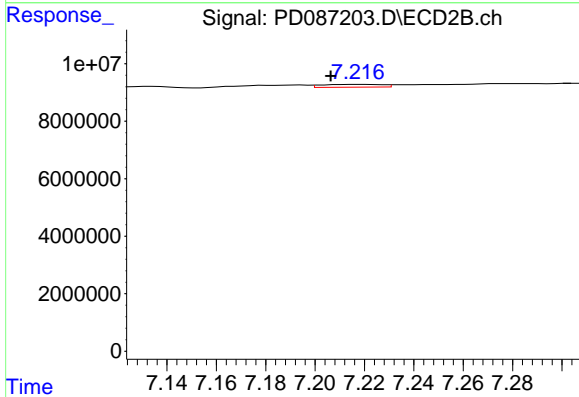
R.T.: 6.820 min  
 Delta R.T.: 0.055 min  
 Response: 617292  
 Conc: 2.17 ng/ml



#25 Toxaphene-4

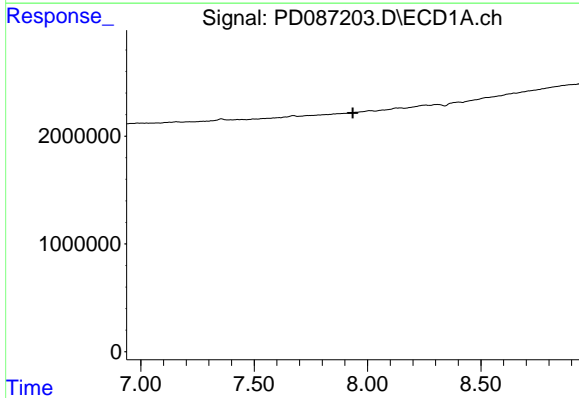
R.T.: 7.156 min  
 Delta R.T.: 0.003 min  
 Response: 79255  
 Conc: 1.23 ng/ml

Instrument :  
 ECD\_D  
 ClientSampleId :



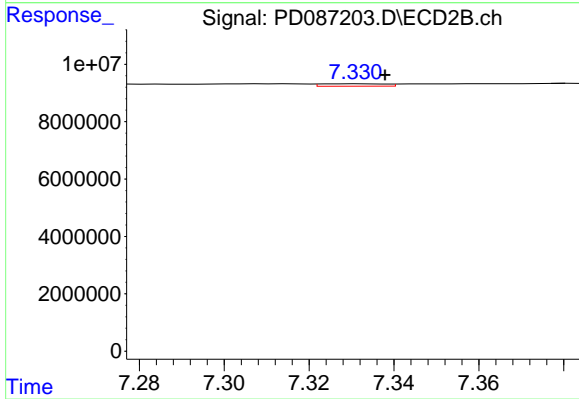
#25 Toxaphene-4

R.T.: 7.218 min  
 Delta R.T.: 0.011 min  
 Response: 1642825  
 Conc: 8.22 ng/ml



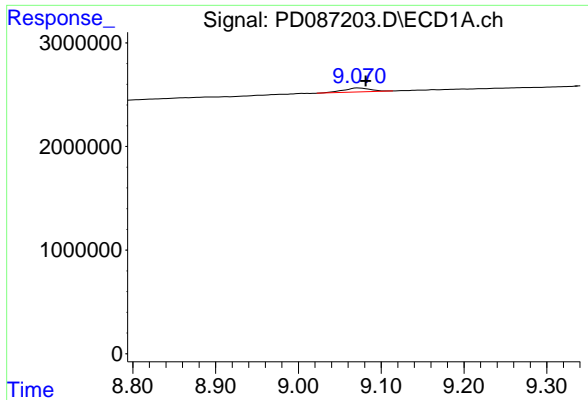
#26 Toxaphene-5

R.T.: 0.000 min  
 Exp R.T. : 7.935 min  
 Response: 0  
 Conc: N.D.



#26 Toxaphene-5

R.T.: 7.332 min  
 Delta R.T.: -0.006 min  
 Response: 908360  
 Conc: 6.12 ng/ml



#27 Decachlorobiphenyl

R.T.: 9.073 min

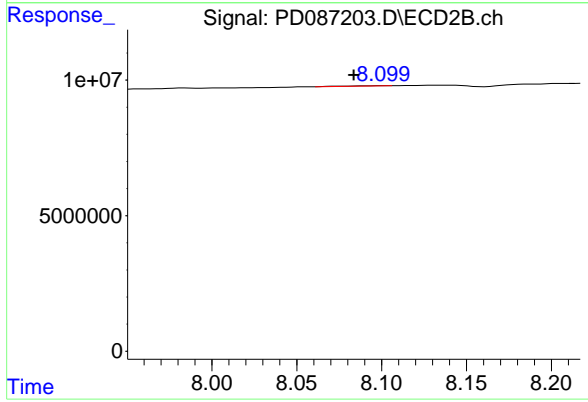
Delta R.T.: -0.009 min

Response: 872602

Conc: 0.29 ng/ml

Instrument : ECD\_D

ClientSampleId :



#27 Decachlorobiphenyl

R.T.: 8.101 min

Delta R.T.: 0.017 min

Response: 187534

Conc: N.D.