

Data Path : Z:\pestpcbsrv\HPCHEM1\ECD_D\Data\PD122124\
 Data File : PD087228.D
 Signal(s) : Signal #1: ECD1A.ch Signal #2: ECD2B.ch
 Acq On : 20 Dec 2024 09:52
 Operator : AR\AJ
 Sample : PB165642TB
 Misc :
 ALS Vial : 6 Sample Multiplier: 1

Instrument :
 ECD_D
 ClientSampleId :

Integration File signal 1: autoint1.e
 Integration File signal 2: autoint2.e
 Quant Time: Dec 20 23:36:02 2024
 Quant Method : Z:\pestpcbsrv\HPCHEM1\ECD_D\Method\PD121924CLP-TCLP.M
 Quant Title : GC Extractables
 QLast Update : Fri Dec 20 05:53:12 2024
 Response via : Initial Calibration
 Integrator: ChemStation

Volume Inj. : 1 µl
 Signal #1 Phase : ZB-MR2 Signal #2 Phase: ZB-MR2
 Signal #1 Info : 30M x 0.32mm x 0. Signal #2 Info : 30M x 0.32mm x 0.25µm

	Compound	RT#1	RT#2	Resp#1	Resp#2	ng/ml	ng/ml

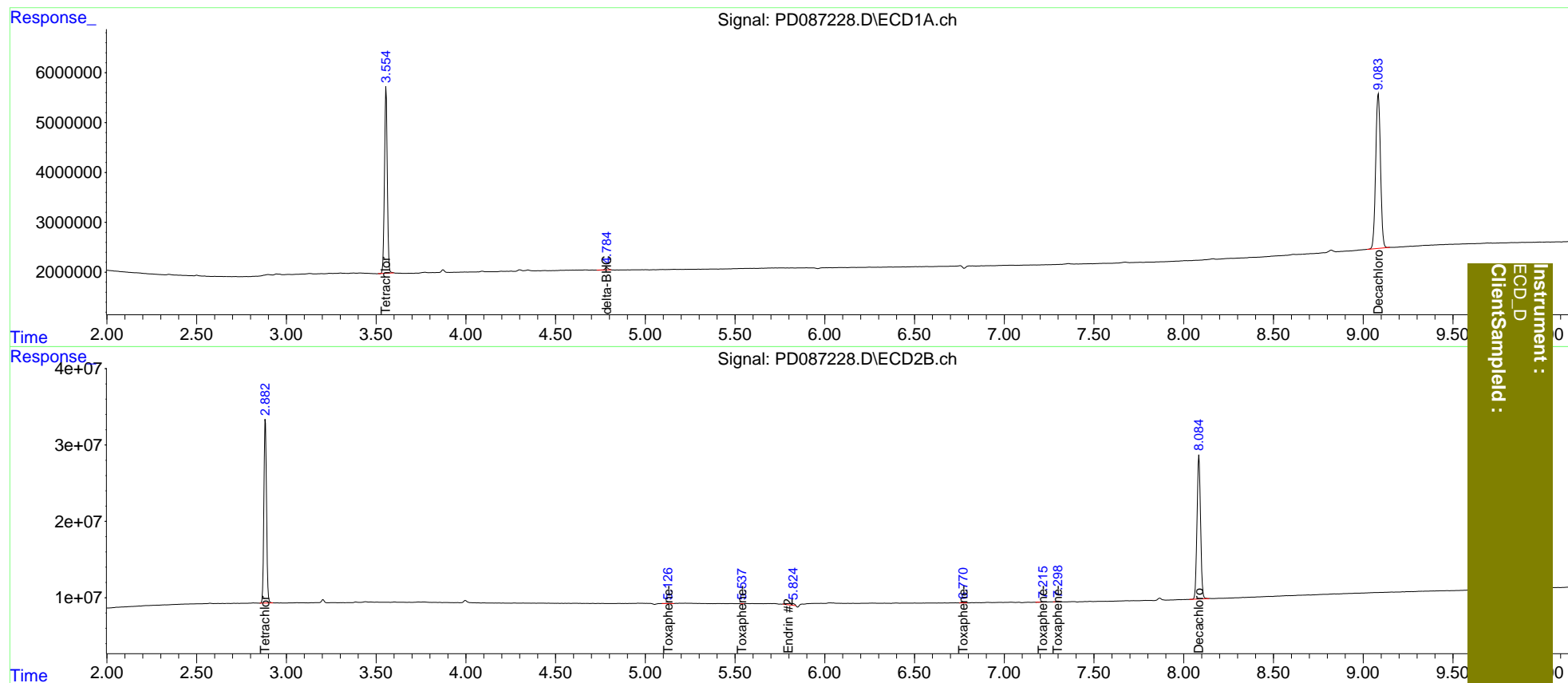
System Monitoring Compounds							
1)	SA Tetrachlo...	3.556	2.883	40740911	245.9E6	20.078	22.373
27)	SA Decachlor...	9.084	8.085	57650309	258.2E6	19.462	20.898
Target Compounds							
2)	A alpha-BHC	0.000	3.387	0	648957	N.D.	<MDL
3)	MA gamma-BHC...	4.301f	3.737	281516	276650	<MDL	<MDL #
4)	MA Heptachlor	0.000	4.103	0	138152	N.D.	<MDL
5)	MB Aldrin	0.000	4.384	0	143099	N.D.	<MDL
7)	B delta-BHC	4.785	4.269	599026	365999	0.148	<MDL #
8)	B Heptachlo...	0.000	4.914	0	43557	N.D.	<MDL
9)	A Endosulfan I	0.000	5.245	0	570767	N.D.	<MDL
10)	B trans-Chl...	0.000	5.128	0	228165	N.D.	<MDL
11)	B cis-Chlor...	0.000	5.193	0	902781	N.D.	<MDL
12)	B 4,4'-DDE	0.000	5.385	0	31124	N.D.	<MDL
13)	MA Dieldrin	0.000	5.538	0	71918	N.D.	<MDL
14)	MA Endrin	0.000	5.801	0	6099492	N.D.	0.457
16)	A 4,4'-DDD	0.000	5.949	0	323285	N.D.	<MDL
17)	MA 4,4'-DDT	0.000	6.131f	0	35918	N.D.	<MDL
18)	B Endrin al...	0.000	6.267	0	385757	N.D.	<MDL
19)	B Endosulfa...	0.000	6.501	0	179048	N.D.	<MDL
20)	A Methoxychlor	0.000	6.771	0	190331	N.D.	<MDL
21)	B Endrin ke...	0.000	7.038f	0	343938	N.D.	<MDL
22)	Toxaphene-1	0.000	5.128	0	228165	N.D.	3.002
23)	Toxaphene-2	0.000	5.538f	0	71918	N.D.	0.870
24)	Toxaphene-3	0.000	6.771	0	190331	N.D.	0.717
25)	Toxaphene-4	0.000	7.218	0	178011	N.D.	0.963
26)	Toxaphene-5	0.000	7.300f	0	685017	N.D.	4.942

(f)=RT Delta > 1/2 Window (#)=Amounts differ by > 25% (m)=manual int.

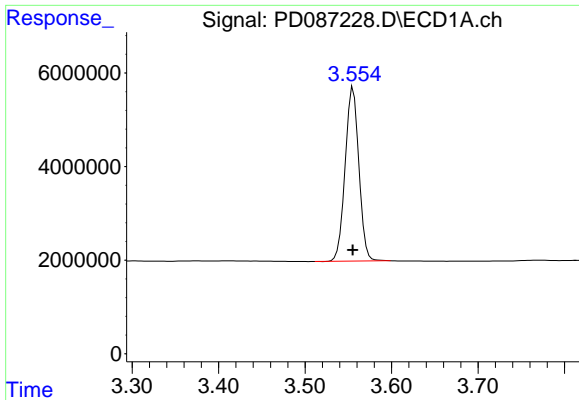
Data Path : Z:\pestpcbsrv\HPCHEM1\ECD_D\Data\PD122124\
 Data File : PD087228.D
 Signal(s) : Signal #1: ECD1A.ch Signal #2: ECD2B.ch
 Acq On : 20 Dec 2024 09:52
 Operator : AR\AJ
 Sample : PB165642TB
 Misc :
 ALS Vial : 6 Sample Multiplier: 1

Integration File signal 1: autoint1.e
 Integration File signal 2: autoint2.e
 Quant Time: Dec 20 23:36:02 2024
 Quant Method : Z:\pestpcbsrv\HPCHEM1\ECD_D\Method\PD121924CLP-TCLP.M
 Quant Title : GC Extractables
 QLast Update : Fri Dec 20 05:53:12 2024
 Response via : Initial Calibration
 Integrator: ChemStation

Volume Inj. : 1 µl
 Signal #1 Phase : ZB-MR1 Signal #2 Phase: ZB-MR2
 Signal #1 Info : 30M x 0.32mm x 0. Signal #2 Info : 30M x 0.32mm x0.25µm

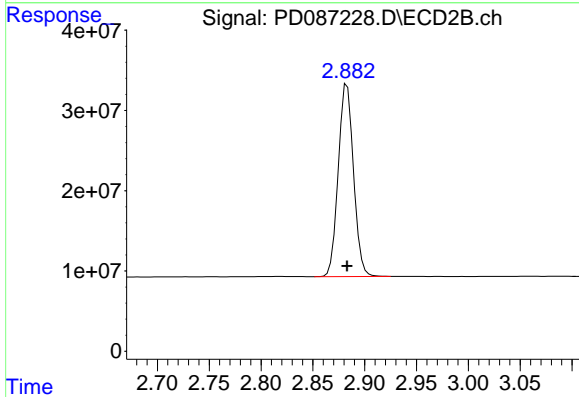


Instrument :
 ECD_D
 ClientSampled :

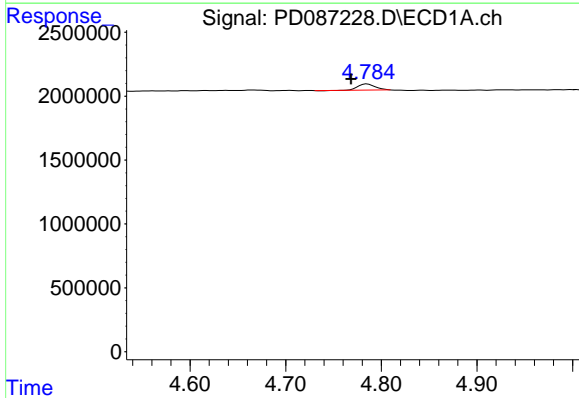


#1 Tetrachloro-m-xylene
 R.T.: 3.556 min
 Delta R.T.: 0.000 min
 Response: 40740911
 Conc: 20.08 ng/ml

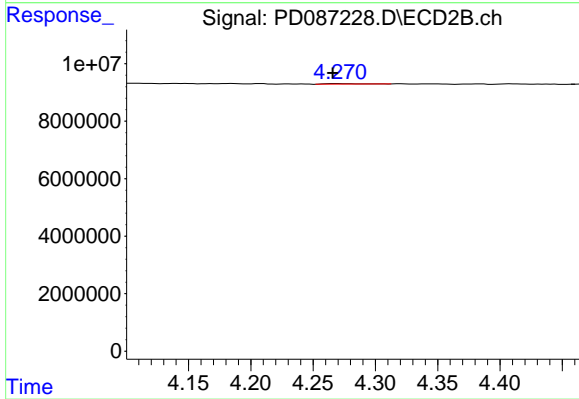
Instrument :
 ECD_D
 ClientSampleId :



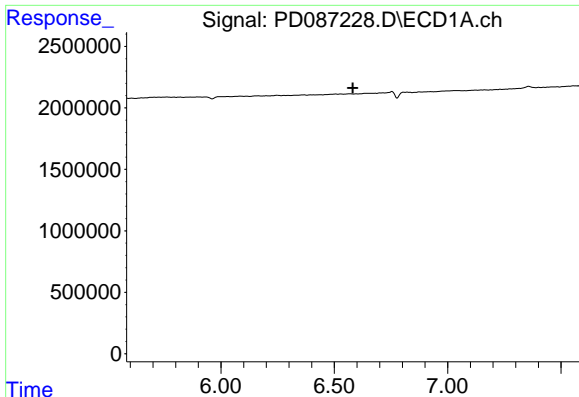
#1 Tetrachloro-m-xylene
 R.T.: 2.883 min
 Delta R.T.: 0.000 min
 Response: 245947346
 Conc: 22.37 ng/ml



#7 delta-BHC
 R.T.: 4.785 min
 Delta R.T.: 0.017 min
 Response: 599026
 Conc: 0.15 ng/ml



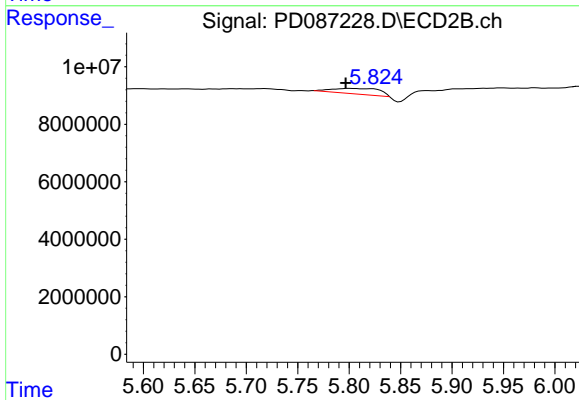
#7 delta-BHC
 R.T.: 4.269 min
 Delta R.T.: 0.004 min
 Response: 365999
 Conc: N.D.



#14 Endrin

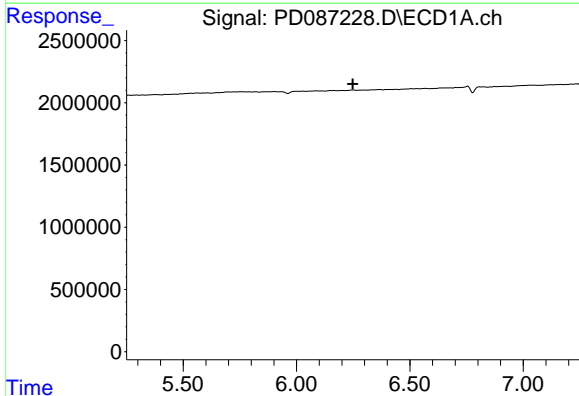
R.T.: 0.000 min
 Exp R.T.: 6.581 min
 Response: 0
 Conc: N.D.

Instrument :
 ECD_D
 ClientSampleId :



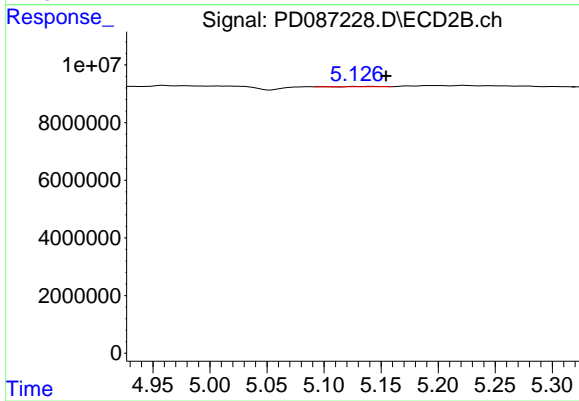
#14 Endrin

R.T.: 5.801 min
 Delta R.T.: 0.005 min
 Response: 6099492
 Conc: 0.46 ng/ml



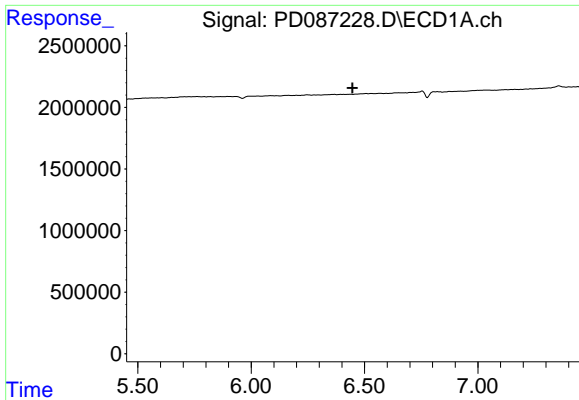
#22 Toxaphene-1

R.T.: 0.000 min
 Exp R.T.: 6.248 min
 Response: 0
 Conc: N.D.



#22 Toxaphene-1

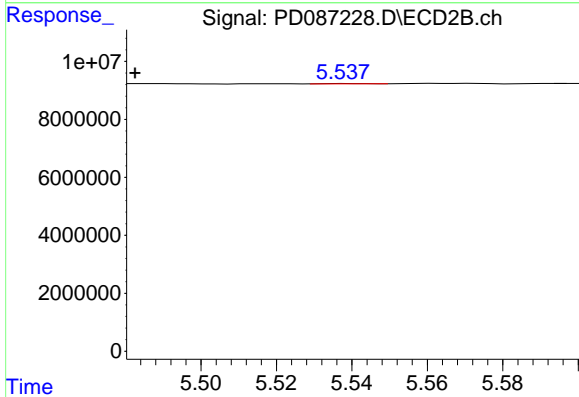
R.T.: 5.128 min
 Delta R.T.: -0.026 min
 Response: 228165
 Conc: 3.00 ng/ml



#23 Toxaphene-2

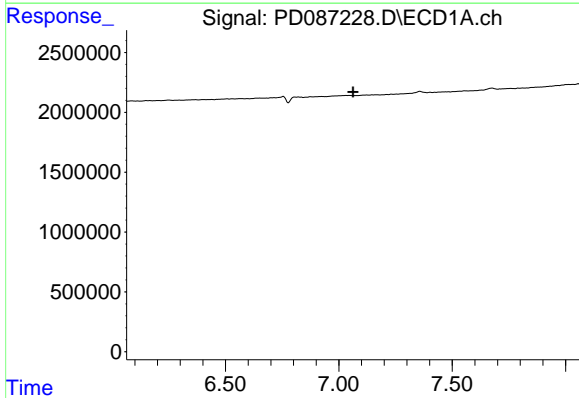
R.T.: 0.000 min
 Exp R.T.: 6.447 min
 Response: 0
 Conc: N.D.

Instrument :
 ECD_D
 ClientSampleId :



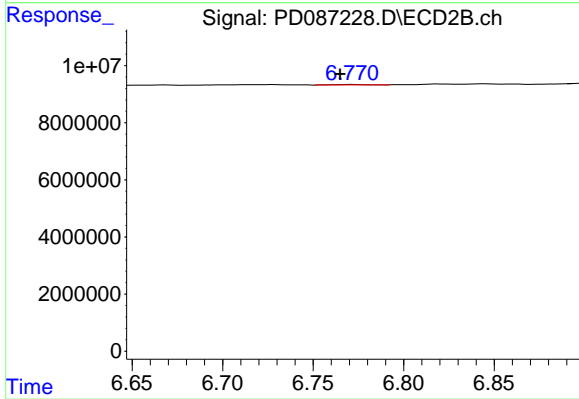
#23 Toxaphene-2

R.T.: 5.538 min
 Delta R.T.: 0.056 min
 Response: 71918
 Conc: 0.87 ng/ml



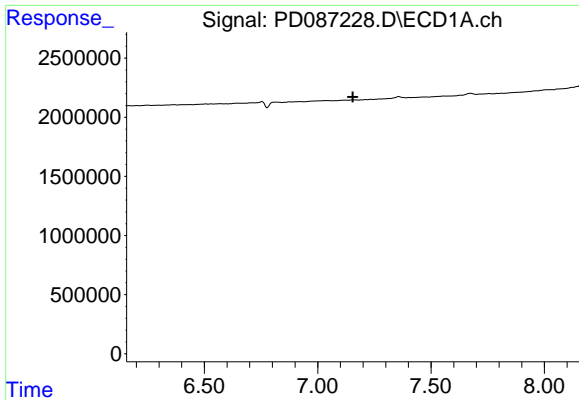
#24 Toxaphene-3

R.T.: 0.000 min
 Exp R.T.: 7.063 min
 Response: 0
 Conc: N.D.



#24 Toxaphene-3

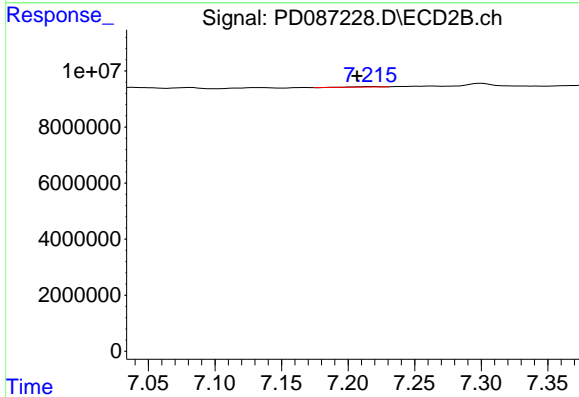
R.T.: 6.771 min
 Delta R.T.: 0.006 min
 Response: 190331
 Conc: 0.72 ng/ml



#25 Toxaphene-4

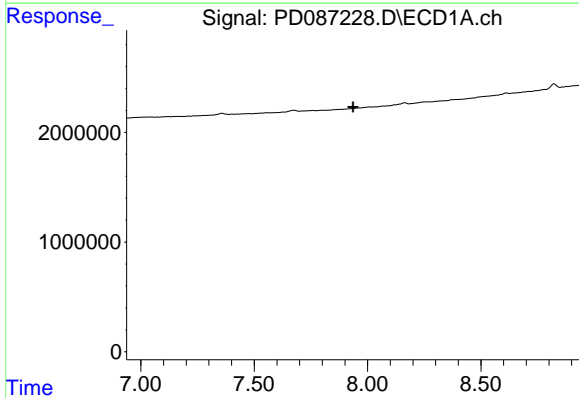
R.T.: 0.000 min
 Exp R.T.: 7.154 min
 Response: 0
 Conc: N.D.

Instrument :
 ECD_D
 ClientSampleId :



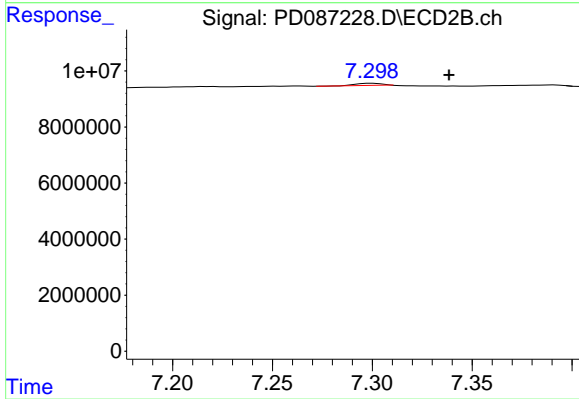
#25 Toxaphene-4

R.T.: 7.218 min
 Delta R.T.: 0.012 min
 Response: 178011
 Conc: 0.96 ng/ml



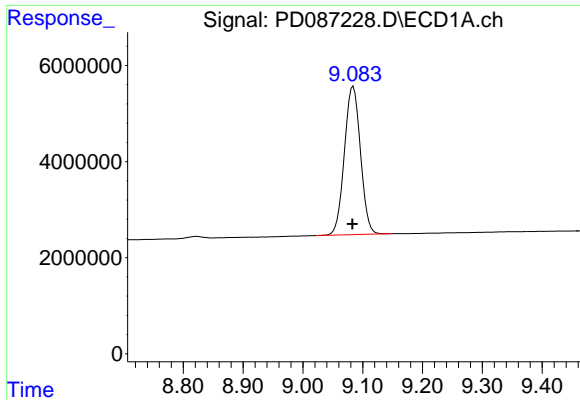
#26 Toxaphene-5

R.T.: 0.000 min
 Exp R.T.: 7.936 min
 Response: 0
 Conc: N.D.



#26 Toxaphene-5

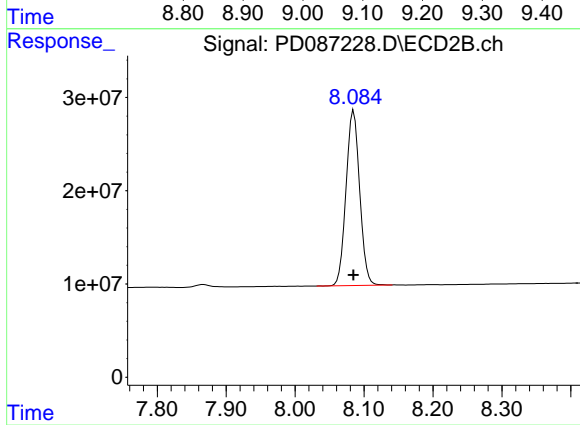
R.T.: 7.300 min
 Delta R.T.: -0.038 min
 Response: 685017
 Conc: 4.94 ng/ml



#27 Decachlorobiphenyl

R.T.: 9.084 min
Delta R.T.: 0.001 min
Response: 57650309
Conc: 19.46 ng/ml

Instrument :
ECD_D
ClientSampleId :



#27 Decachlorobiphenyl

R.T.: 8.085 min
Delta R.T.: 0.000 min
Response: 258227408
Conc: 20.90 ng/ml