

Data Path : Z:\pestpcbsrv\HPCHEM1\ECD_D\Data\PD122124\
 Data File : PD087229.D
 Signal(s) : Signal #1: ECD1A.ch Signal #2: ECD2B.ch
 Acq On : 20 Dec 2024 10:29
 Operator : AR\AJ
 Sample : P5235-01
 Misc :
 ALS Vial : 7 Sample Multiplier: 1

Instrument :
 ECD_D
 ClientSampleId :

Integration File signal 1: autoint1.e
 Integration File signal 2: autoint2.e
 Quant Time: Dec 20 23:36:16 2024
 Quant Method : Z:\pestpcbsrv\HPCHEM1\ECD_D\Method\PD121924CLP-TCLP.M
 Quant Title : GC Extractables
 QLast Update : Fri Dec 20 05:53:12 2024
 Response via : Initial Calibration
 Integrator: ChemStation

Volume Inj. : 1 µl
 Signal #1 Phase : ZB-MR1 Signal #2 Phase: ZB-MR2
 Signal #1 Info : 30M x 0.32mm x 0. Signal #2 Info : 30M x 0.32mm x 0.25µm

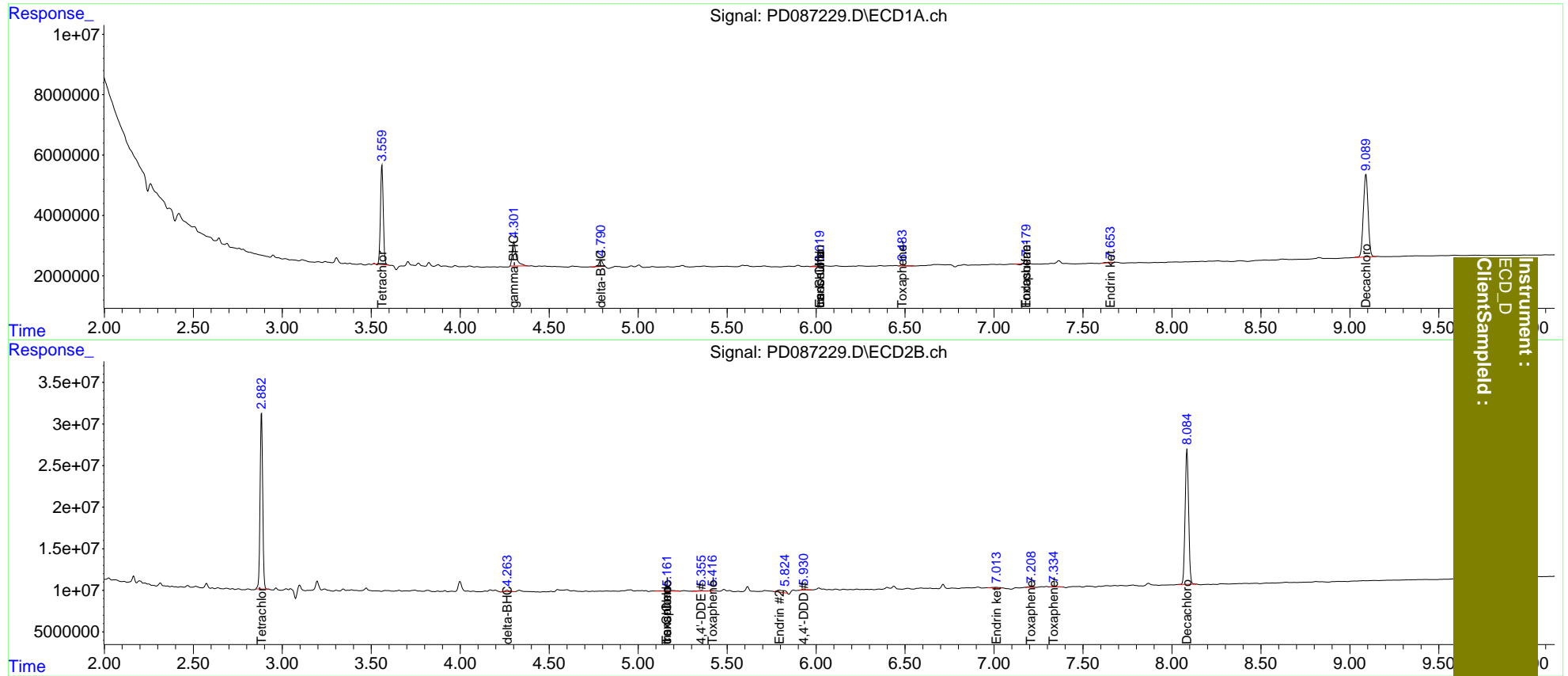
Compound	RT#1	RT#2	Resp#1	Resp#2	ng/ml	ng/ml
System Monitoring Compounds						
1) SA Tetrachlo...	3.561	2.884	36316653	217.3E6	17.898	19.763
2) SA Decachlor...	9.091	8.085	50672536	222.2E6	17.106	17.984
Target Compounds						
2) A alpha-BHC	0.000	3.390	0	1187003	N.D.	<MDL
3) MA gamma-BHC...	4.303f	3.744	12545653	1317484	3.156	<MDL #
6) B beta-BHC	0.000	4.074f	0	462290	N.D.	<MDL
7) B delta-BHC	4.792	4.264	3086471	2412656	0.763	0.145 #
8) B Heptachlo...	0.000	4.860	0	247186	N.D.	<MDL
9) A Endosulfan I	6.019f	5.259	795120	1027742	0.240	<MDL #
10) B trans-Chl...	6.019f	5.162	795120	3273000	0.226	0.210
11) B cis-Chlor...	6.019	5.162f	795120	3273000	0.225	0.218
12) B 4,4'-DDE	0.000	5.355	0	1616182	N.D.	0.113
14) MA Endrin	0.000	5.795	0	8091495	N.D.	0.606
15) B Endosulfa...	0.000	6.075	0	206372	N.D.	<MDL
16) A 4,4'-DDD	0.000	5.931	0	2234115	N.D.	0.193
18) B Endrin al...	0.000	6.286	0	283980	N.D.	<MDL
19) B Endosulfa...	7.181	6.516	1149497	-1585963	0.398	N.D. #
21) B Endrin ke...	7.655	7.011	457158	1503048	0.143	0.110
22) Toxaphene-1	0.000	5.162	0	3273000	N.D.	43.070
23) Toxaphene-2	6.485f	5.415f	486853	659818	15.963	7.982 #
25) Toxaphene-4	7.181	7.208	1149497	1268318	17.950	6.862 #
26) Toxaphene-5	0.000	7.335	0	921082	N.D.	6.646

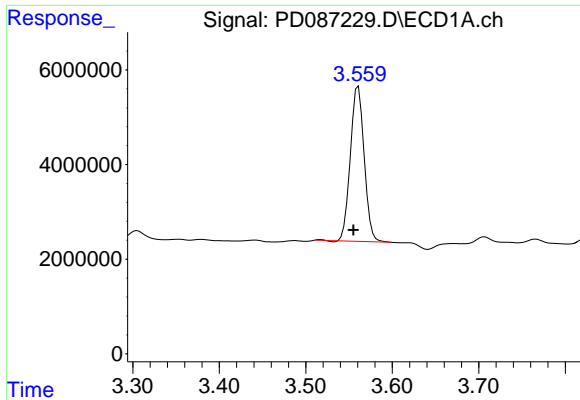
(f)=RT Delta > 1/2 Window (#)=Amounts differ by > 25% (m)=manual int.

Data Path : Z:\pestpcbsrv\HPCHEM1\ECD_D\Data\PD122124\
 Data File : PD087229.D
 Signal(s) : Signal #1: ECD1A.ch Signal #2: ECD2B.ch
 Acq On : 20 Dec 2024 10:29
 Operator : AR\AJ
 Sample : P5235-01
 Misc :
 ALS Vial : 7 Sample Multiplier: 1

Integration File signal 1: autoint1.e
 Integration File signal 2: autoint2.e
 Quant Time: Dec 20 23:36:16 2024
 Quant Method : Z:\pestpcbsrv\HPCHEM1\ECD_D\Method\PD121924CLP-TCLP.M
 Quant Title : GC Extractables
 QLast Update : Fri Dec 20 05:53:12 2024
 Response via : Initial Calibration
 Integrator: ChemStation

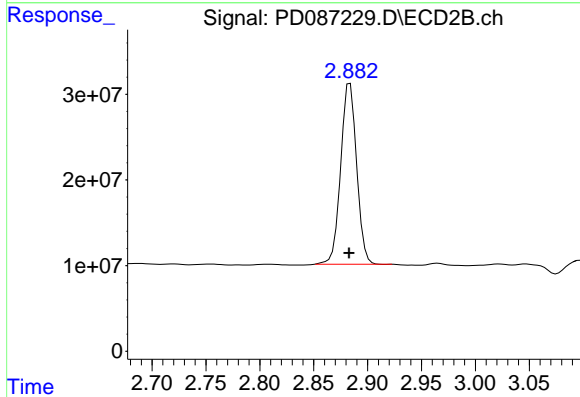
Volume Inj. : 1 µl
 Signal #1 Phase : ZB-MR1 Signal #2 Phase: ZB-MR2
 Signal #1 Info : 30M x 0.32mm x 0. Signal #2 Info : 30M x 0.32mm x0.25µm



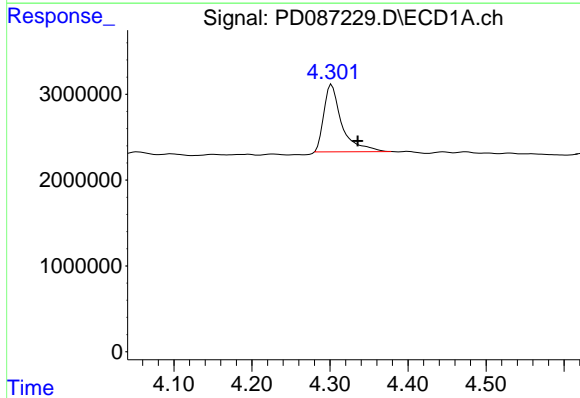


#1 Tetrachloro-m-xylene
 R.T.: 3.561 min
 Delta R.T.: 0.006 min
 Response: 36316653
 Conc: 17.90 ng/ml

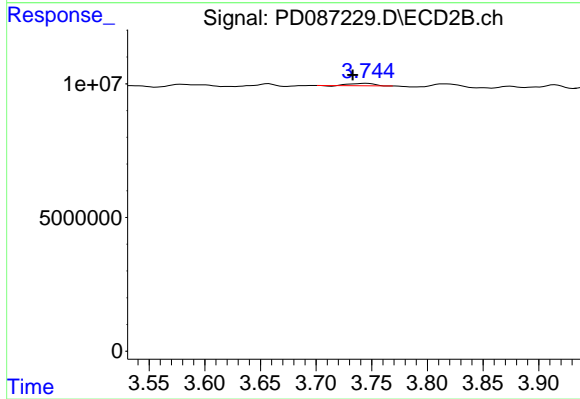
Instrument :
 ECD_D
 ClientSampleId :



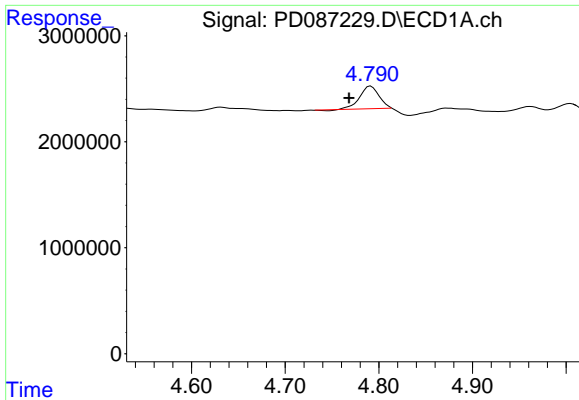
#1 Tetrachloro-m-xylene
 R.T.: 2.884 min
 Delta R.T.: 0.000 min
 Response: 217250576
 Conc: 19.76 ng/ml



#3 gamma-BHC (Lindane)
 R.T.: 4.303 min
 Delta R.T.: -0.033 min
 Response: 12545653
 Conc: 3.16 ng/ml



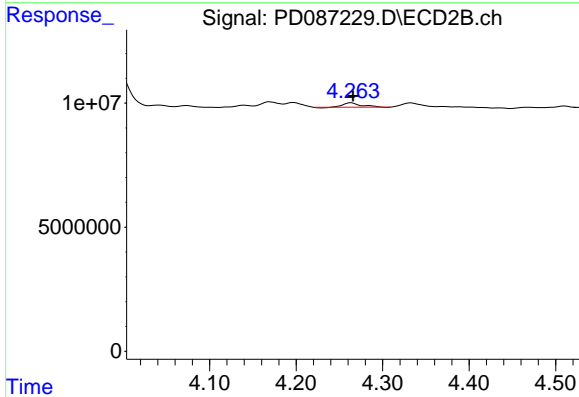
#3 gamma-BHC (Lindane)
 R.T.: 3.744 min
 Delta R.T.: 0.011 min
 Response: 1317484
 Conc: N.D.



#7 delta-BHC

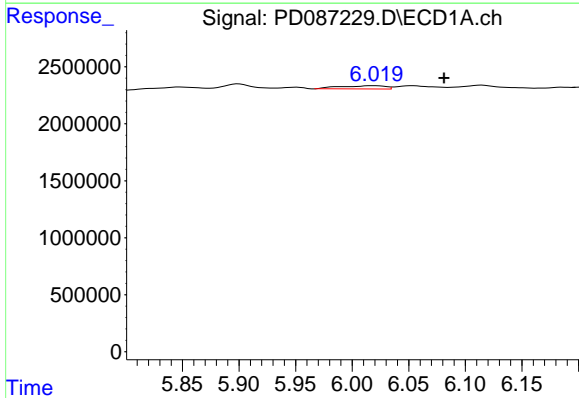
R.T.: 4.792 min
 Delta R.T.: 0.023 min
 Response: 3086471
 Conc: 0.76 ng/ml

Instrument :
 ECD_D
 ClientSampleId :



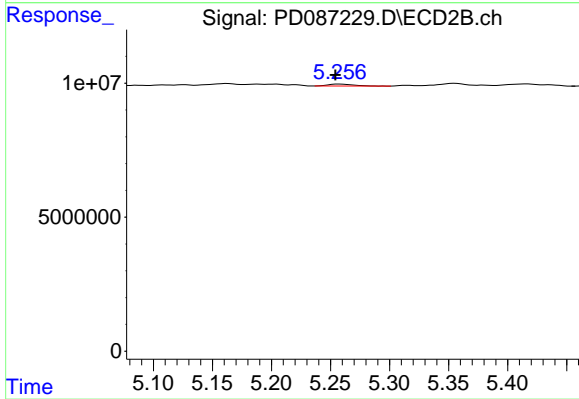
#7 delta-BHC

R.T.: 4.264 min
 Delta R.T.: -0.002 min
 Response: 2412656
 Conc: 0.14 ng/ml



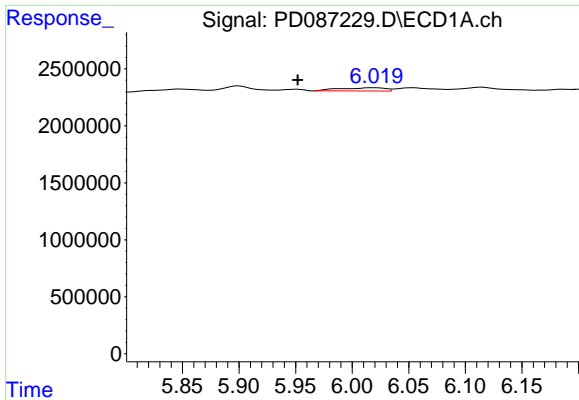
#9 Endosulfan I

R.T.: 6.019 min
 Delta R.T.: -0.062 min
 Response: 795120
 Conc: 0.24 ng/ml



#9 Endosulfan I

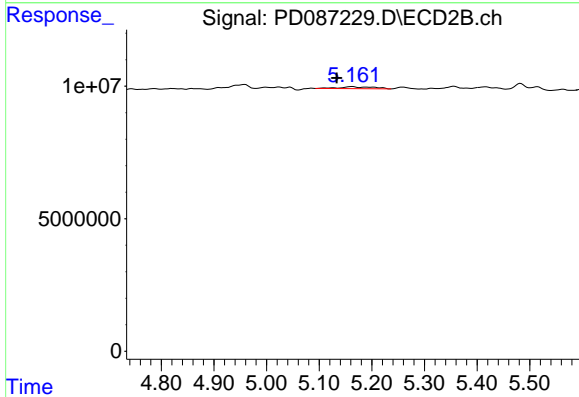
R.T.: 5.259 min
 Delta R.T.: 0.005 min
 Response: 1027742
 Conc: N.D.



#10 trans-Chlordane

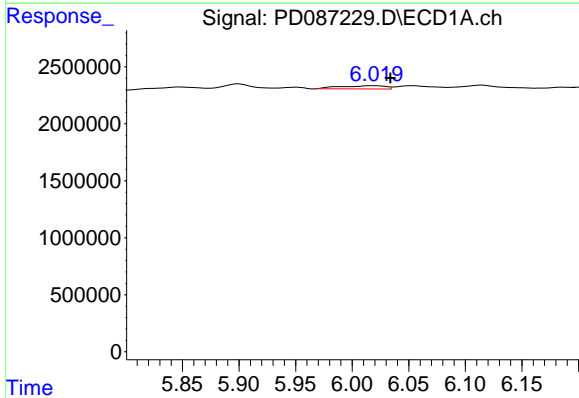
R.T.: 6.019 min
 Delta R.T.: 0.067 min
 Response: 795120
 Conc: 0.23 ng/ml

Instrument :
 ECD_D
 ClientSampleId :



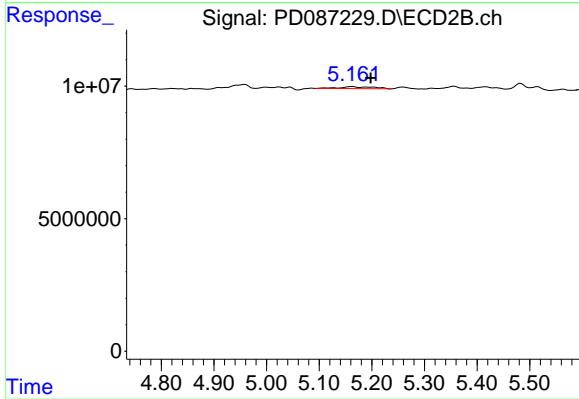
#10 trans-Chlordane

R.T.: 5.162 min
 Delta R.T.: 0.029 min
 Response: 3273000
 Conc: 0.21 ng/ml



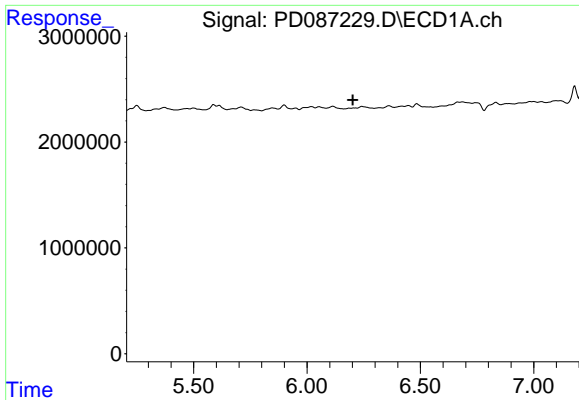
#11 cis-Chlordane

R.T.: 6.019 min
 Delta R.T.: -0.015 min
 Response: 795120
 Conc: 0.22 ng/ml



#11 cis-Chlordane

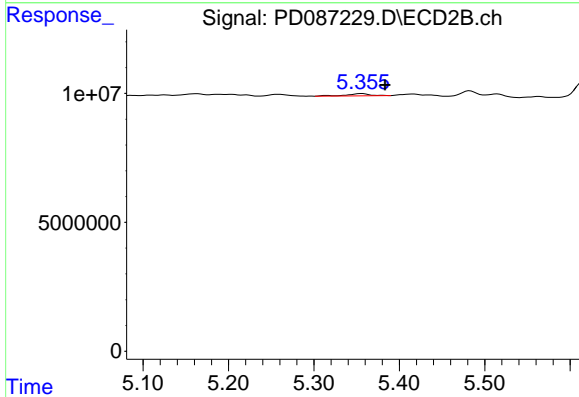
R.T.: 5.162 min
 Delta R.T.: -0.036 min
 Response: 3273000
 Conc: 0.22 ng/ml



#12 4,4'-DDE

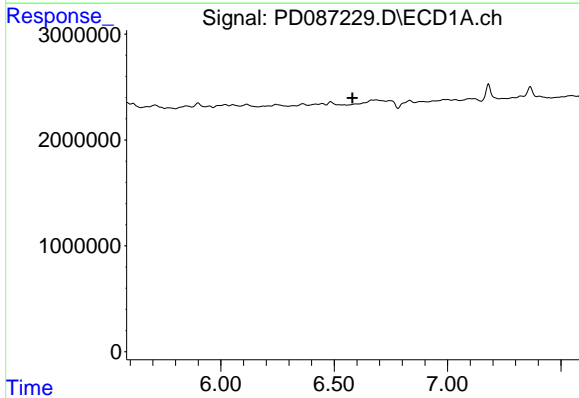
R.T.: 0.000 min
 Exp R.T.: 6.202 min
 Response: 0
 Conc: N.D.

Instrument :
 ECD_D
 ClientSampleId :



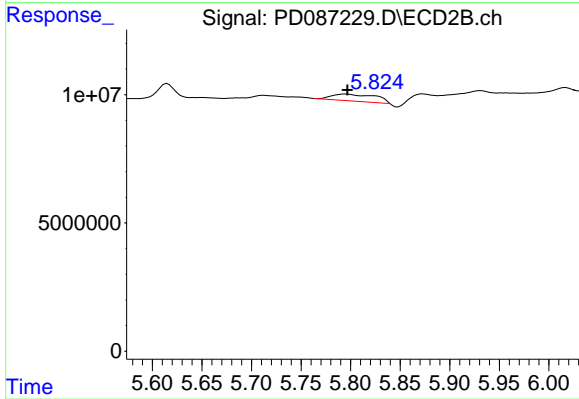
#12 4,4'-DDE

R.T.: 5.355 min
 Delta R.T.: -0.028 min
 Response: 1616182
 Conc: 0.11 ng/ml



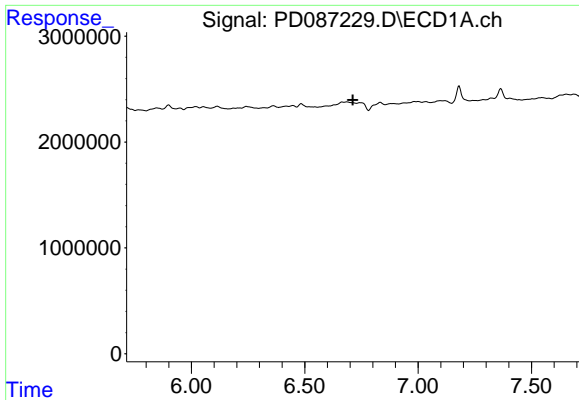
#14 Endrin

R.T.: 0.000 min
 Exp R.T.: 6.581 min
 Response: 0
 Conc: N.D.



#14 Endrin

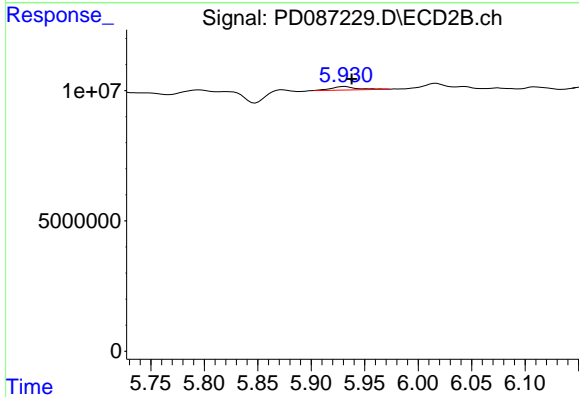
R.T.: 5.795 min
 Delta R.T.: -0.001 min
 Response: 8091495
 Conc: 0.61 ng/ml



#16 4,4'-DDD

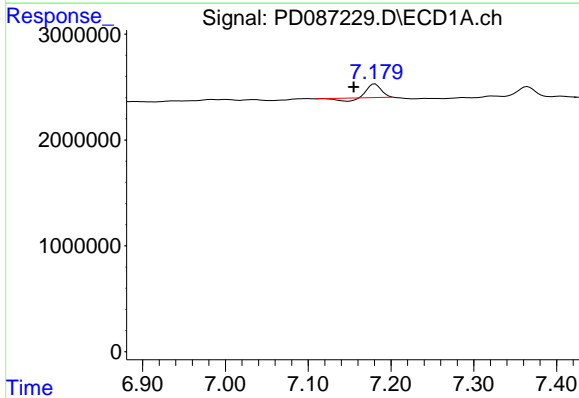
R.T.: 0.000 min
 Exp R.T.: 6.712 min
 Response: 0
 Conc: N.D.

Instrument :
 ECD_D
 ClientSampleId :



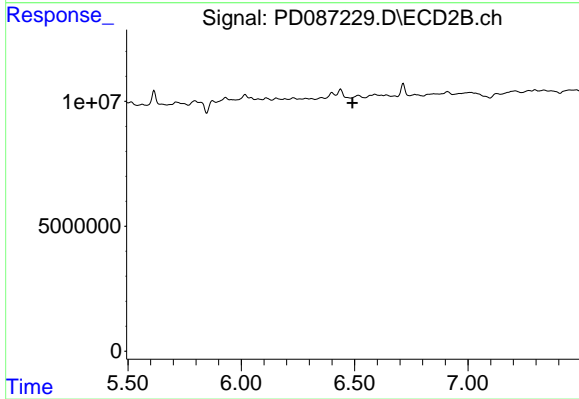
#16 4,4'-DDD

R.T.: 5.931 min
 Delta R.T.: -0.007 min
 Response: 2234115
 Conc: 0.19 ng/ml



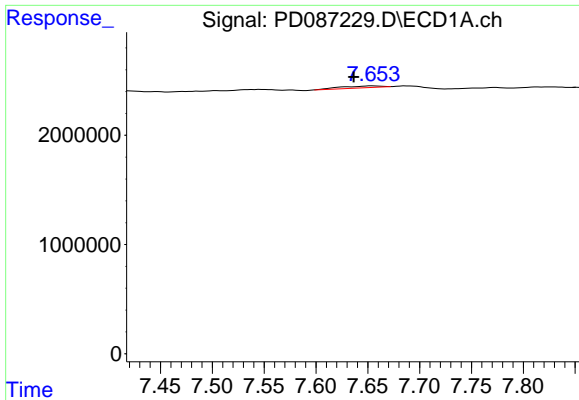
#19 Endosulfan Sulfate

R.T.: 7.181 min
 Delta R.T.: 0.026 min
 Response: 1149497
 Conc: 0.40 ng/ml



#19 Endosulfan Sulfate

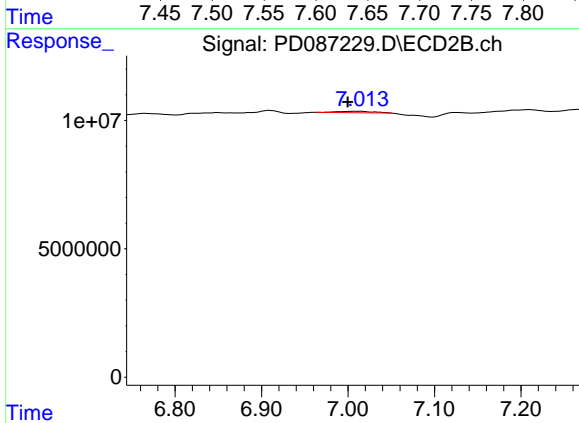
R.T.: 6.516 min
 Delta R.T.: 0.026 min
 Response: -1585963
 Conc: N.D.



#21 Endrin ketone

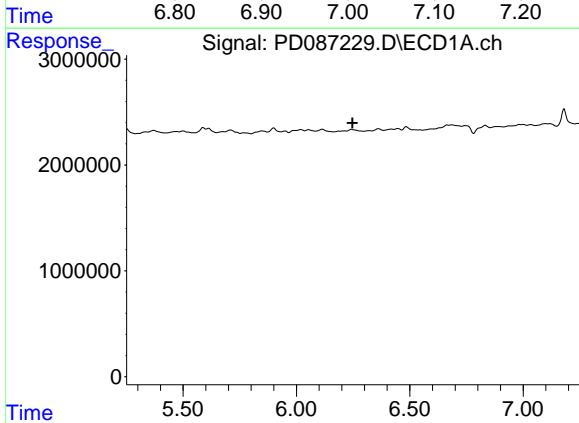
R.T.: 7.655 min
 Delta R.T.: 0.018 min
 Response: 457158
 Conc: 0.14 ng/ml

Instrument :
 ECD_D
 ClientSampleId :



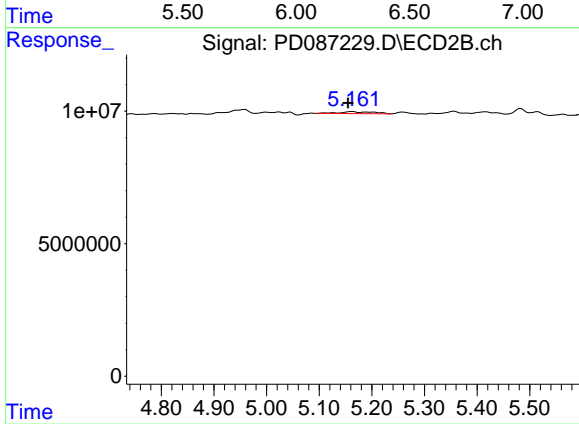
#21 Endrin ketone

R.T.: 7.011 min
 Delta R.T.: 0.011 min
 Response: 1503048
 Conc: 0.11 ng/ml



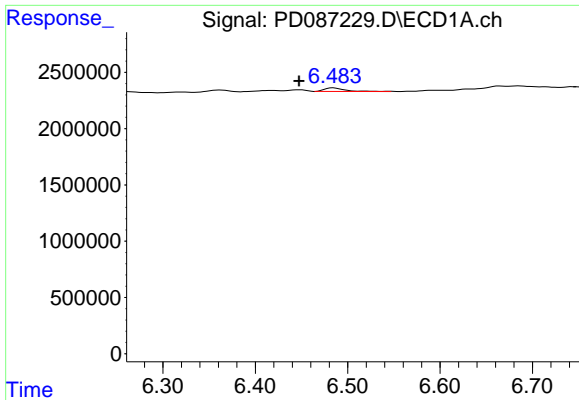
#22 Toxaphene-1

R.T.: 0.000 min
 Exp R.T. : 6.248 min
 Response: 0
 Conc: N.D.



#22 Toxaphene-1

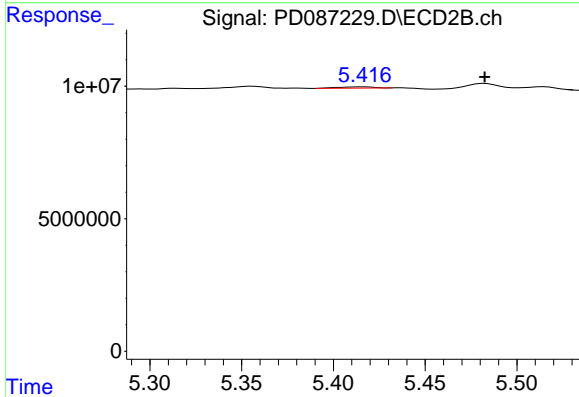
R.T.: 5.162 min
 Delta R.T.: 0.007 min
 Response: 3273000
 Conc: 43.07 ng/ml



#23 Toxaphene-2

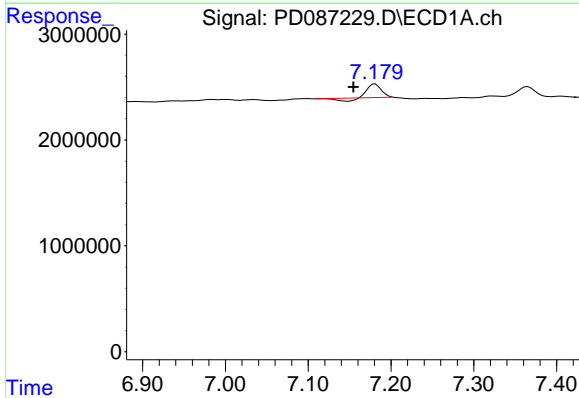
R.T.: 6.485 min
 Delta R.T.: 0.038 min
 Response: 486853
 Conc: 15.96 ng/ml

Instrument :
 ECD_D
 ClientSampleId :



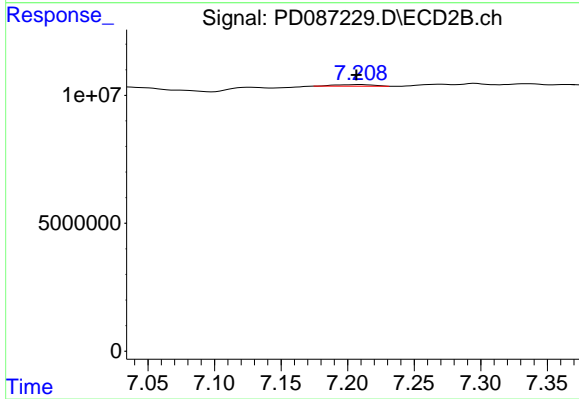
#23 Toxaphene-2

R.T.: 5.415 min
 Delta R.T.: -0.067 min
 Response: 659818
 Conc: 7.98 ng/ml



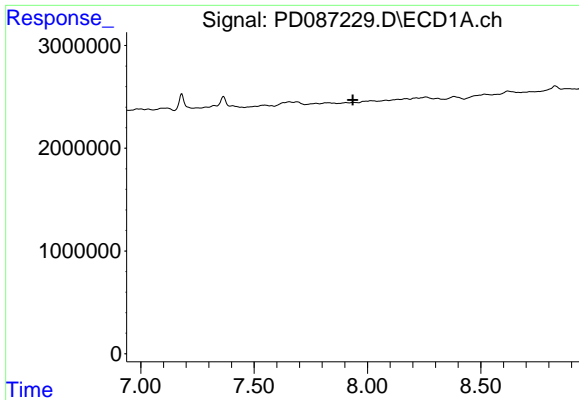
#25 Toxaphene-4

R.T.: 7.181 min
 Delta R.T.: 0.026 min
 Response: 1149497
 Conc: 17.95 ng/ml



#25 Toxaphene-4

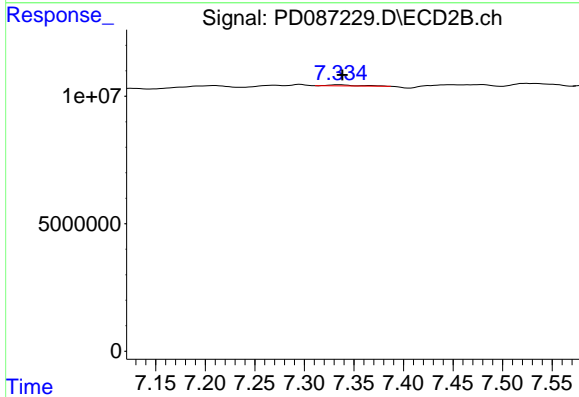
R.T.: 7.208 min
 Delta R.T.: 0.001 min
 Response: 1268318
 Conc: 6.86 ng/ml



#26 Toxaphene-5

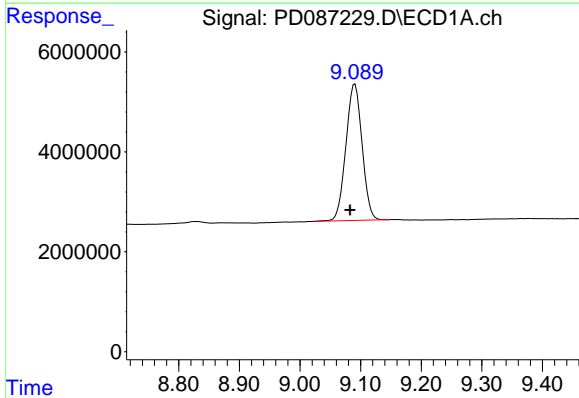
R.T.: 0.000 min
 Exp R.T.: 7.936 min
 Response: 0
 Conc: N.D.

Instrument :
 ECD_D
 ClientSampleId :



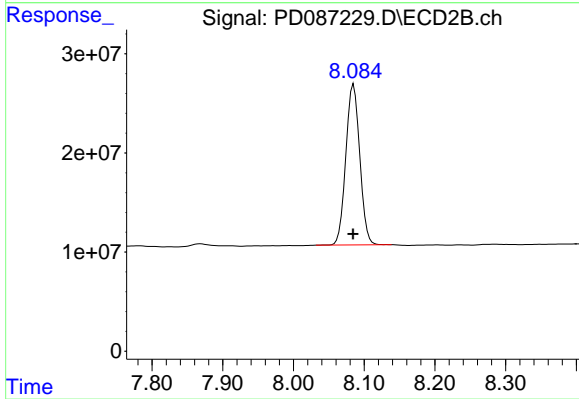
#26 Toxaphene-5

R.T.: 7.335 min
 Delta R.T.: -0.003 min
 Response: 921082
 Conc: 6.65 ng/ml



#27 Decachlorobiphenyl

R.T.: 9.091 min
 Delta R.T.: 0.008 min
 Response: 50672536
 Conc: 17.11 ng/ml



#27 Decachlorobiphenyl

R.T.: 8.085 min
 Delta R.T.: 0.000 min
 Response: 222227511
 Conc: 17.98 ng/ml