

Data Path : Z:\pestpcbsrv\HPCHEM1\ECD_D\Data\PD122124\
 Data File : PD087232.D
 Signal(s) : Signal #1: ECD1A.ch Signal #2: ECD2B.ch
 Acq On : 20 Dec 2024 11:11
 Operator : AR\AJ
 Sample : P5235-04 10X
 Misc :
 ALS Vial : 10 Sample Multiplier: 1

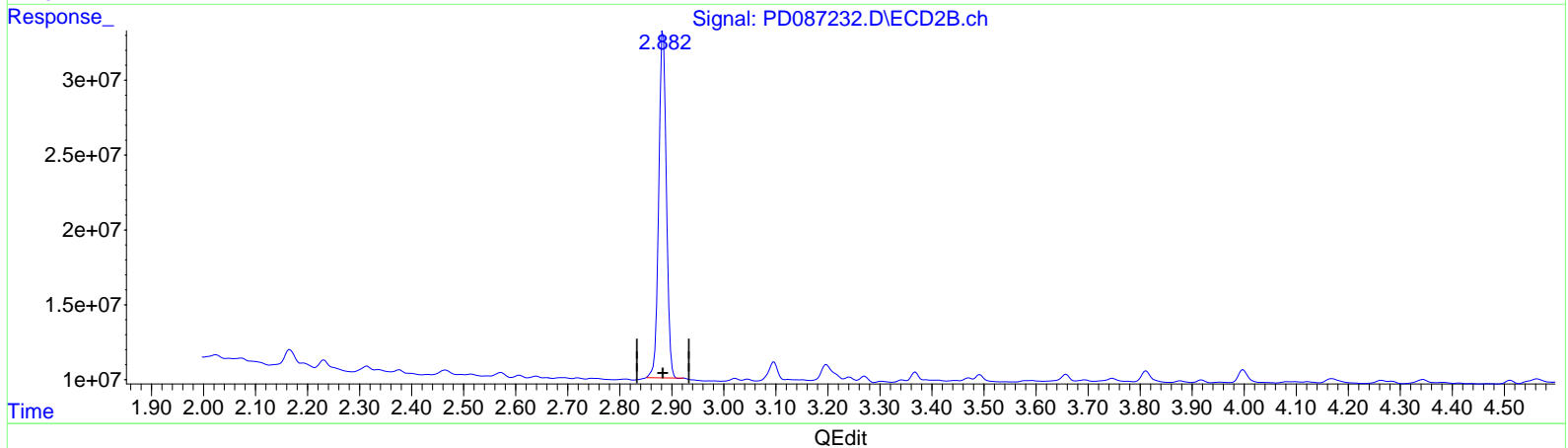
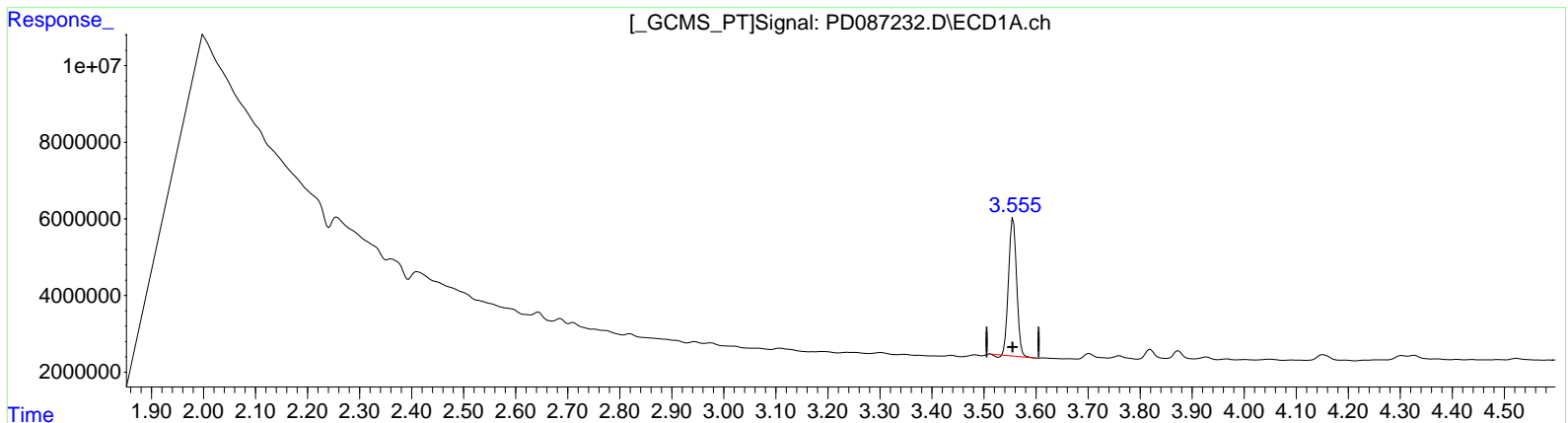
Instrument :
 ECD_D
 ClientSampleId :
 C0AT2

Manual Integrations APPROVED

Reviewed By :Yogesh Patel 12/25/2024
 Supervised By :mohammad ahmed 12/25/2024

Integration File signal 1: autoint1.e
 Integration File signal 2: autoint2.e
 Quant Time: Dec 20 23:37:12 2024
 Quant Method : Z:\pestpcbsrv\HPCHEM1\ECD_D\Method\PD121924CLP-TCLP.M
 Quant Title : GC Extractables
 QLast Update : Fri Dec 20 05:53:12 2024
 Response via : Initial Calibration
 Integrator: ChemStation

Volume Inj. : 1 µl
 Signal #1 Phase : ZB-MR1 Signal #2 Phase: ZB-MR2
 Signal #1 Info : 30M x 0.32mm x 0. Signal #2 Info : 30M x 0.32mm x0.25µm



(1) Tetrachloro-m-xylene (SA)
 3.556min 18.885 ng/ml
 response 38319977

(1) Tetrachloro-m-xylene #2 (SA)
 2.884min 21.455 ng/ml
 response 235850286

Data Path : Z:\pestpcbsrv\HPCHEM1\ECD_D\Data\PD122124\
 Data File : PD087232.D
 Signal(s) : Signal #1: ECD1A.ch Signal #2: ECD2B.ch
 Acq On : 20 Dec 2024 11:11
 Operator : AR\AJ
 Sample : P5235-04 10X
 Misc :
 ALS Vial : 10 Sample Multiplier: 1

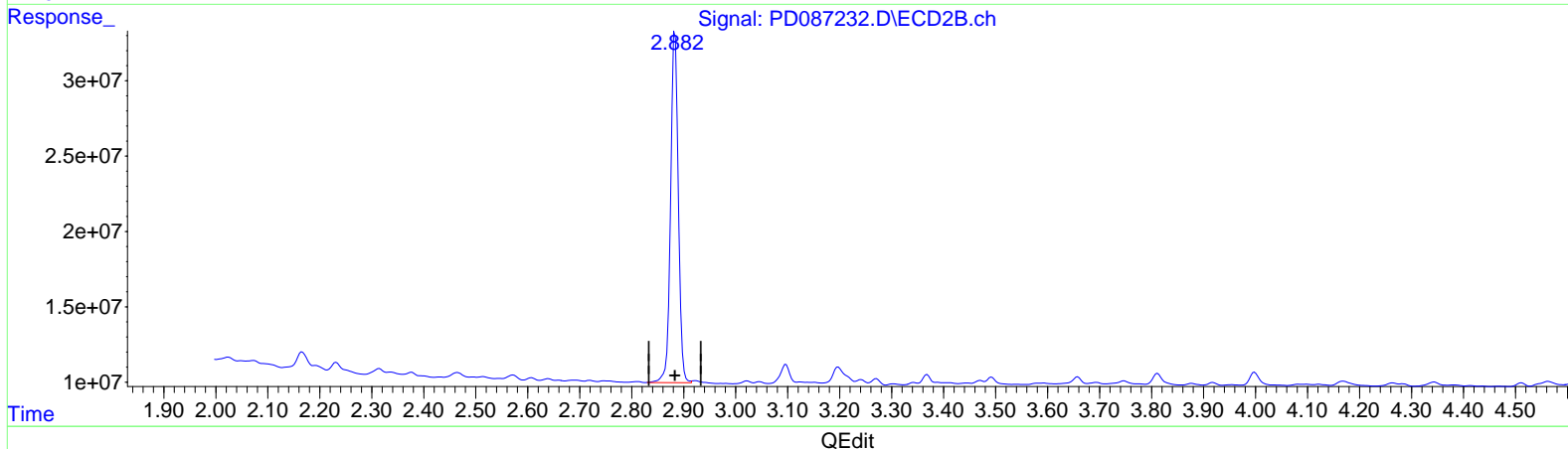
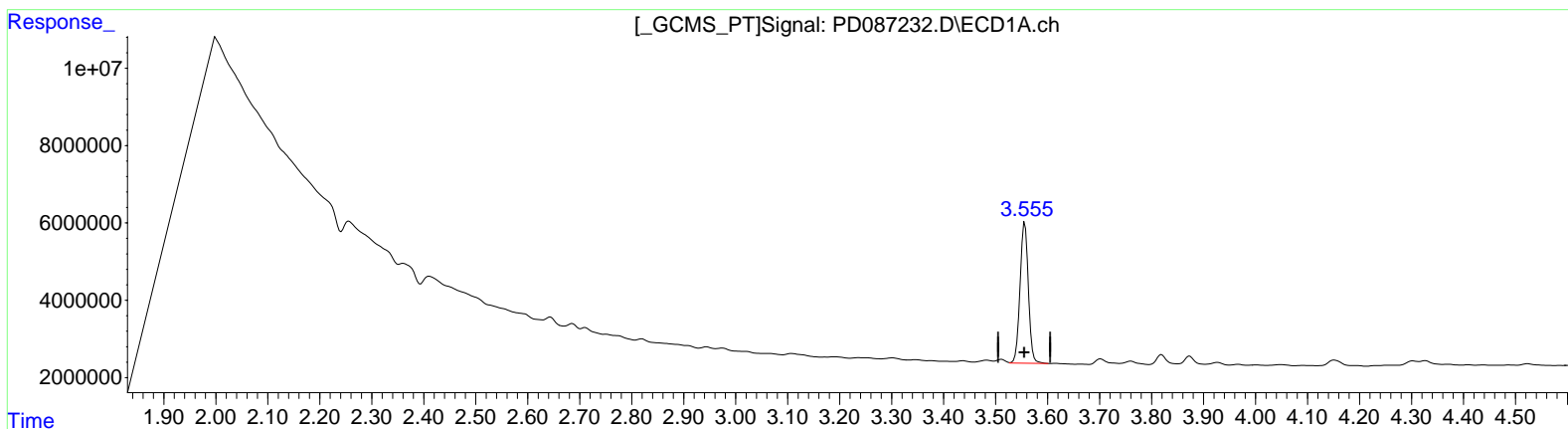
Instrument :
 ECD_D
 ClientSampleId :
 C0AT2

Manual Integrations APPROVED

Reviewed By : Yogesh Patel 12/25/2024
 Supervised By : mohammad ahmed 12/25/2024

Integration File signal 1: autoint1.e
 Integration File signal 2: autoint2.e
 Quant Time: Dec 20 23:37:12 2024
 Quant Method : Z:\pestpcbsrv\HPCHEM1\ECD_D\Method\PD121924CLP-TCLP.M
 Quant Title : GC Extractables
 QLast Update : Fri Dec 20 05:53:12 2024
 Response via : Initial Calibration
 Integrator: ChemStation

Volume Inj. : 1 µl
 Signal #1 Phase : ZB-MR1 Signal #2 Phase: ZB-MR2
 Signal #1 Info : 30M x 0.32mm x 0. Signal #2 Info : 30M x 0.32mm x 0.25µm



(1) Tetrachloro-m-xylene (SA)
 3.555min 19.949 ng/ml m
 response 40479439

(1) Tetrachloro-m-xylene #2 (SA)
 2.882min 22.071 ng/ml m
 response 242622181

Data Path : Z:\pestpcbsrv\HPCHEM1\ECD_D\Data\PD122124\
 Data File : PD087232.D
 Signal(s) : Signal #1: ECD1A.ch Signal #2: ECD2B.ch
 Acq On : 20 Dec 2024 11:11
 Operator : AR\AJ
 Sample : P5235-04 10X
 Misc :
 ALS Vial : 10 Sample Multiplier: 1

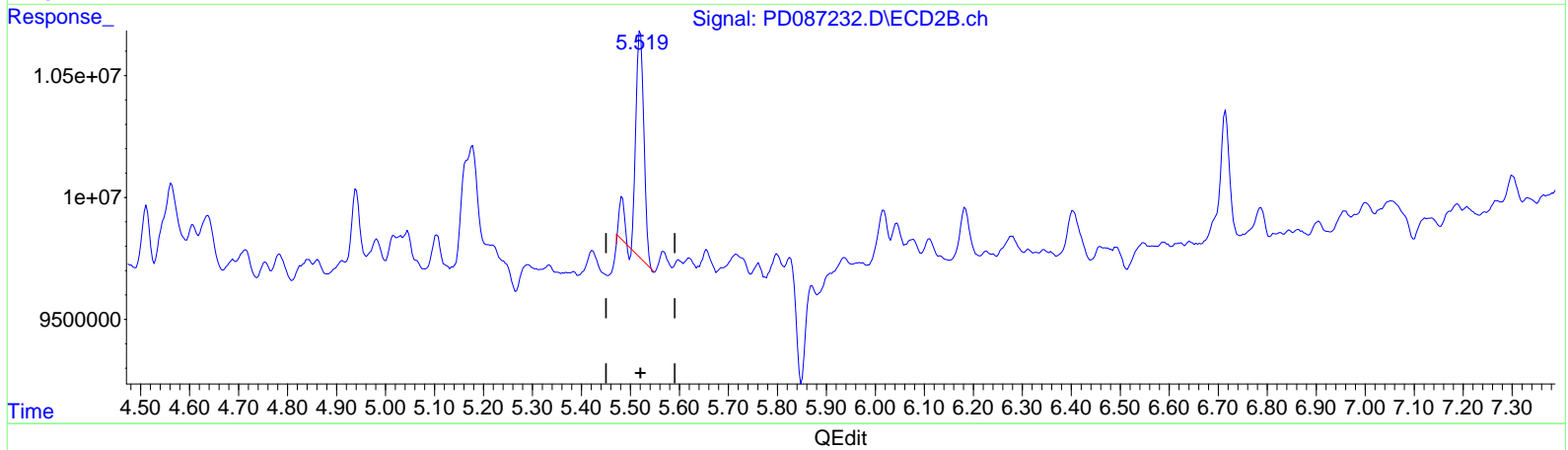
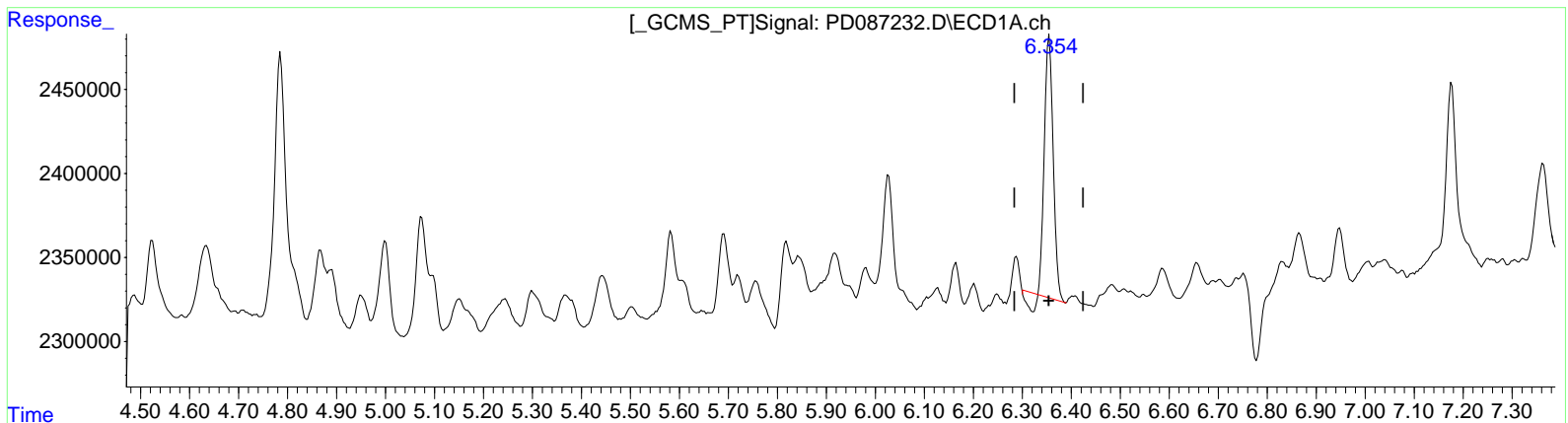
Instrument :
 ECD_D
 ClientSampleId :
 C0AT2

Manual Integrations APPROVED

Reviewed By :Yogesh Patel 12/25/2024
 Supervised By :mohammad ahmed 12/25/2024

Integration File signal 1: autoint1.e
 Integration File signal 2: autoint2.e
 Quant Time: Dec 20 23:37:12 2024
 Quant Method : Z:\pestpcbsrv\HPCHEM1\ECD_D\Method\PD121924CLP-TCLP.M
 Quant Title : GC Extractables
 QLast Update : Fri Dec 20 05:53:12 2024
 Response via : Initial Calibration
 Integrator: ChemStation

Volume Inj. : 1 µl
 Signal #1 Phase : ZB-MR1 Signal #2 Phase: ZB-MR2
 Signal #1 Info : 30M x 0.32mm x 0. Signal #2 Info : 30M x 0.32mm x0.25µm



(13) Dieldrin (MA)
 6.355min 0.509 ng/ml
 response 1844533

(13) Dieldrin #2 (MA)
 5.520min 0.758 ng/ml
 response 11030209

Data Path : Z:\pestpcbsrv\HPCHEM1\ECD_D\Data\PD122124\
 Data File : PD087232.D
 Signal(s) : Signal #1: ECD1A.ch Signal #2: ECD2B.ch
 Acq On : 20 Dec 2024 11:11
 Operator : AR\AJ
 Sample : P5235-04 10X
 Misc :
 ALS Vial : 10 Sample Multiplier: 1

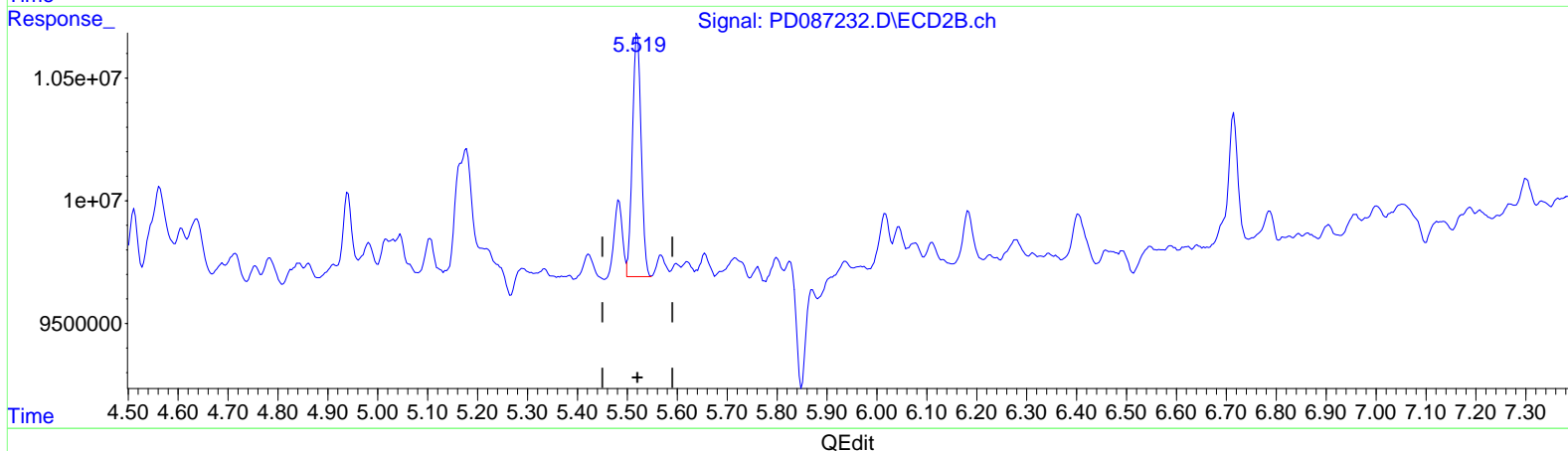
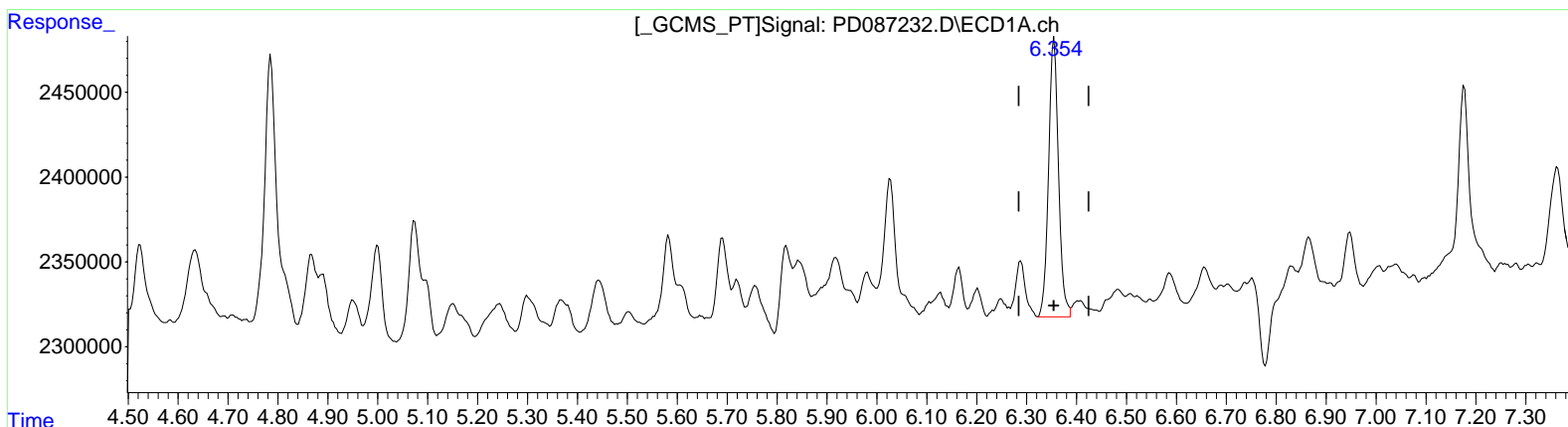
Instrument :
 ECD_D
 ClientSampleId :
 C0AT2

Manual Integrations APPROVED

Reviewed By :Yogesh Patel 12/25/2024
 Supervised By :mohammad ahmed 12/25/2024

Integration File signal 1: autoint1.e
 Integration File signal 2: autoint2.e
 Quant Time: Dec 20 23:37:12 2024
 Quant Method : Z:\pestpcbsrv\HPCHEM1\ECD_D\Method\PD121924CLP-TCLP.M
 Quant Title : GC Extractables
 QLast Update : Fri Dec 20 05:53:12 2024
 Response via : Initial Calibration
 Integrator: ChemStation

Volume Inj. : 1 µl
 Signal #1 Phase : ZB-MR1 Signal #2 Phase: ZB-MR2
 Signal #1 Info : 30M x 0.32mm x 0. Signal #2 Info : 30M x 0.32mm x0.25µm



(13) Dieldrin (MA)
 6.354min 0.624 ng/ml m
 response 2261863

(13) Dieldrin #2 (MA)
 5.519min 0.834 ng/ml m
 response 12127463