

Data Path : Z:\pestpcbsrv\HPCHEM1\ECD_D\Data\PD122220\
 Data File : PD060809.D
 Signal(s) : Signal #1: ECD1A.ch Signal #2: ECD2B.ch
 Acq On : 22 Dec 2020 12:01
 Operator : DD\AJ
 Sample : L5144-07
 Misc :
 ALS Vial : 4 Sample Multiplier: 1

Instrument :
 ECD_D
 ClientSampleId :

Integration File signal 1: autoint1.e
 Integration File signal 2: autoint2.e
 Quant Time: Dec 23 00:33:25 2020
 Quant Method : Z:\pestpcbsrv\HPCHEM1\ECD_D\Method\PD120420CLP.M
 Quant Title : GC Extractables
 QLast Update : Fri Dec 04 03:58:39 2020
 Response via : Initial Calibration
 Integrator: ChemStation

Volume Inj. : 1 µl
 Signal #1 Phase : ZB-MR2 Signal #2 Phase: ZB-MR1
 Signal #1 Info : 30M x 0.32mm x0.2 Signal #2 Info : 30M x 0.32mm x 0.50µm

Compound	RT#1	RT#2	Resp#1	Resp#2	ng/ml	ng/ml
----------	------	------	--------	--------	-------	-------

System Monitoring Compounds

Target Compounds

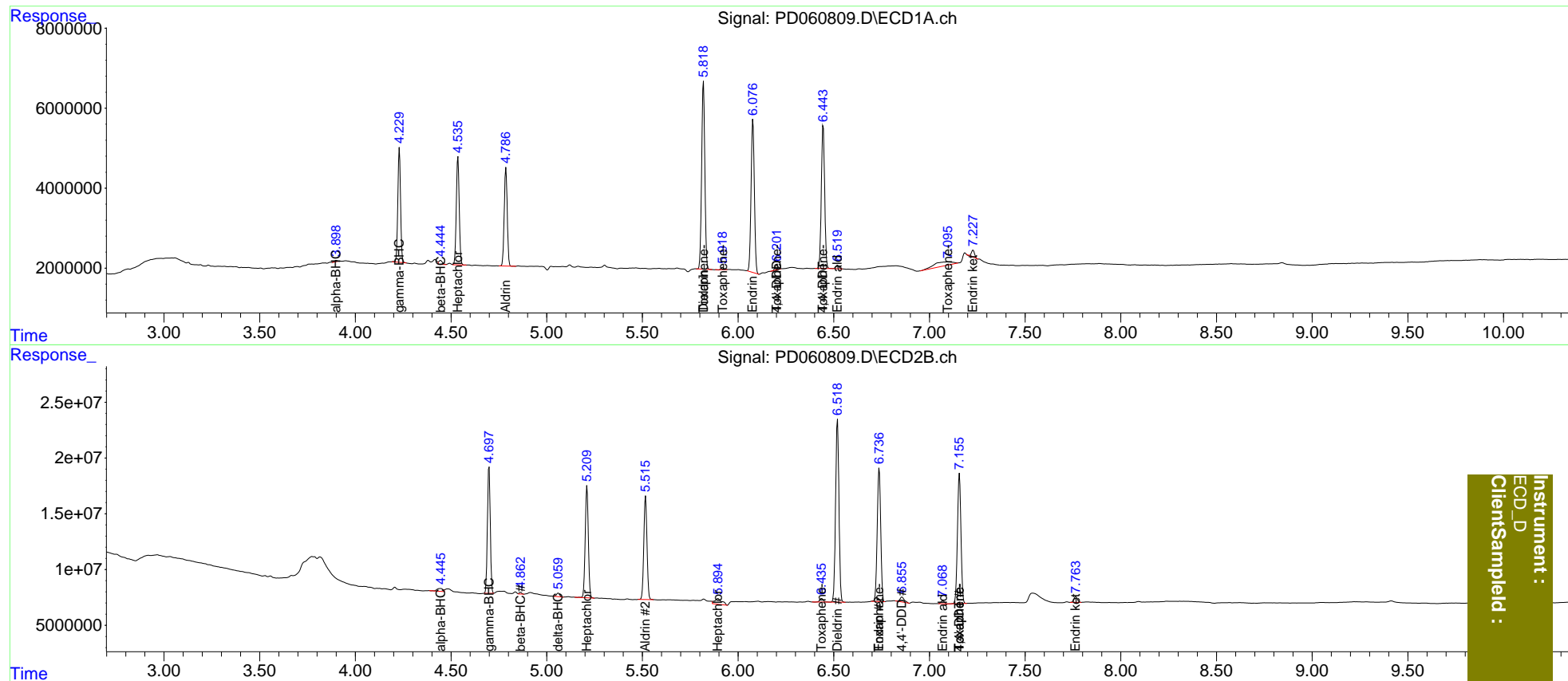
2) A	alpha-BHC	3.900f	4.446f	440722	5530679	0.262	0.937 #
3) MA	gamma-BHC...	4.230	4.699	28210335	117.8E6	17.490	21.959 #
4) MA	Heptachlor	4.536	5.210	28622501	113.1E6	17.045	21.489 #
5) MB	Aldrin	4.787	5.516	26845852	107.1E6	16.690	21.510 #
6) B	beta-BHC	4.445f	4.864	1352317	1374567	1.764	0.578 #
7) B	delta-BHC	0.000	5.060	0	3648586	N.D.	0.765
8) B	Heptachlo...	0.000	5.895	0	13722974	N.D.	3.186
13) MA	Dieldrin	5.819	6.519	53974807	200.1E6	33.987	42.851 #
14) MA	Endrin	6.078	6.738	45487711	150.7E6	35.156	40.873
16) A	4,4'-DDD	6.203	6.857	1317760	7101246	1.026	1.927 #
17) MA	4,4'-DDT	6.445	7.157	43201895	148.1E6	33.170	41.279
18) B	Endrin a...	6.520	7.070	1050092	3240524	0.978	1.067
21) B	Endrin ke...	7.228	7.765	2000629	6587650	1.382	1.735 #
22)	Toxaphene-1	5.819	6.437	53974807	4054291	4073.880	141.862 #
23)	Toxaphene-2	5.919	6.738	493082	150.7E6	36.600	4287.968 #
24)	Toxaphene-3	6.203	7.157	1317760	148.1E6	86.532	2851.239 #
25)	Toxaphene-4	6.445	7.157	43201895	148.1E6	1251.150	1032.692
26)	Toxaphene-5	7.096	0.000	6649390	0	177.673	N.D. #

(f)=RT Delta > 1/2 Window (#)=Amounts differ by > 25% (m)=manual int.

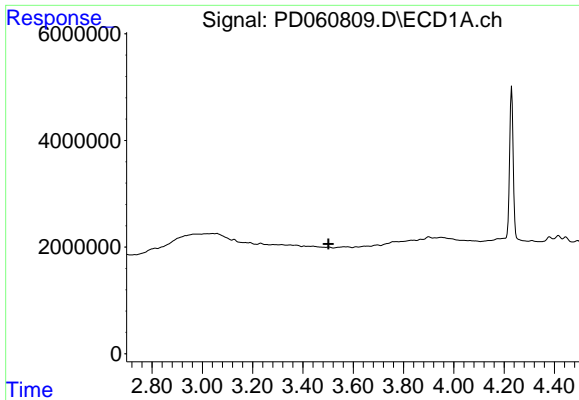
Data Path : Z:\pestpcbsrv\HPCHEM1\ECD_D\Data\PD122220\
 Data File : PD060809.D
 Signal(s) : Signal #1: ECD1A.ch Signal #2: ECD2B.ch
 Acq On : 22 Dec 2020 12:01
 Operator : DD\AJ
 Sample : L5144-07
 Misc :
 ALS Vial : 4 Sample Multiplier: 1

Integration File signal 1: autoint1.e
 Integration File signal 2: autoint2.e
 Quant Time: Dec 23 00:33:25 2020
 Quant Method : Z:\pestpcbsrv\HPCHEM1\ECD_D\Method\PD120420CLP.M
 Quant Title : GC Extractables
 QLast Update : Fri Dec 04 03:58:39 2020
 Response via : Initial Calibration
 Integrator: ChemStation

Volume Inj. : 1 µl
 Signal #1 Phase : ZB-MR2 Signal #2 Phase: ZB-MR1
 Signal #1 Info : 30M x 0.32mm x0.2 Signal #2 Info : 30M x 0.32mm x 0.50µm

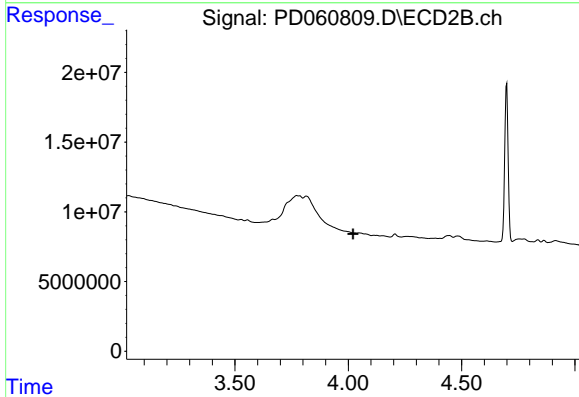


Instrument :
 ECD_D
 ClientSampleId :

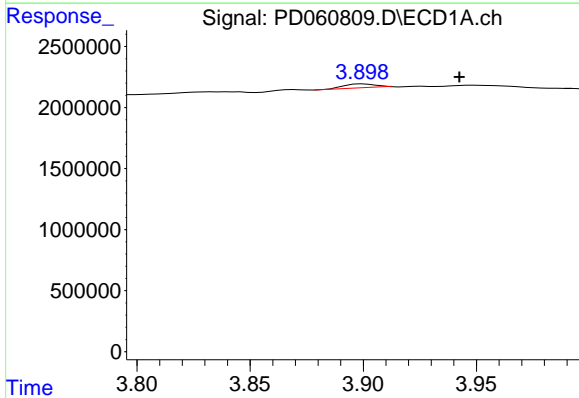


#1 Tetrachloro-m-xylene
 R.T.: 0.000 min
 Exp R.T. : 3.501 min
 Response: 0
 Conc: N.D.

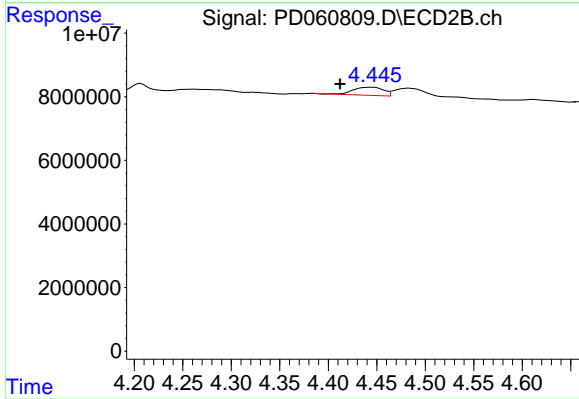
Instrument :
 ECD_D
 ClientSampled :



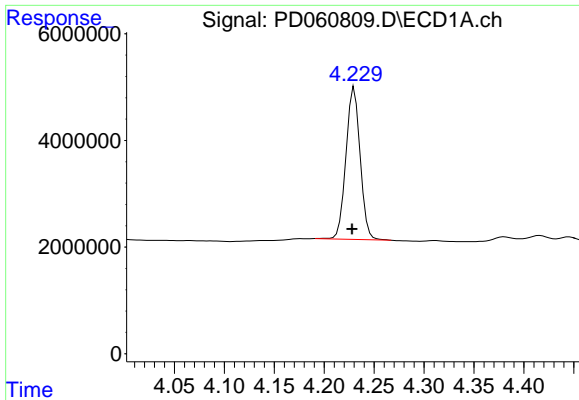
#1 Tetrachloro-m-xylene
 R.T.: 0.000 min
 Exp R.T. : 4.022 min
 Response: 0
 Conc: N.D.



#2 alpha-BHC
 R.T.: 3.900 min
 Delta R.T.: -0.043 min
 Response: 440722
 Conc: 0.26 ng/ml

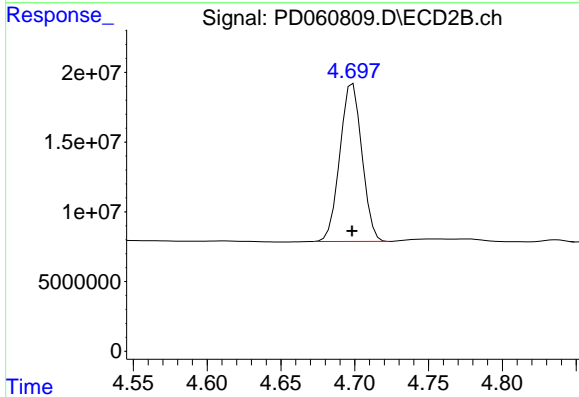


#2 alpha-BHC
 R.T.: 4.446 min
 Delta R.T.: 0.034 min
 Response: 5530679
 Conc: 0.94 ng/ml

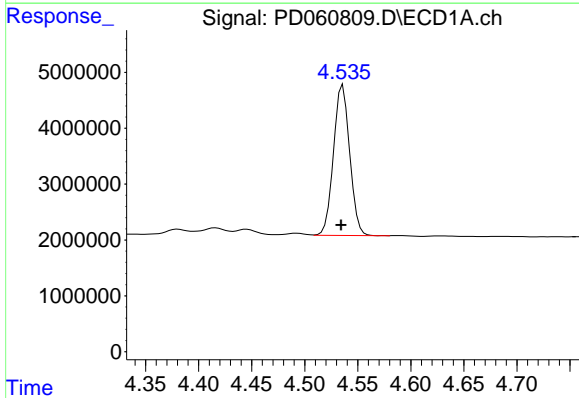


#3 gamma-BHC (Lindane)
R.T.: 4.230 min
Delta R.T.: 0.002 min
Response: 28210335
Conc: 17.49 ng/ml

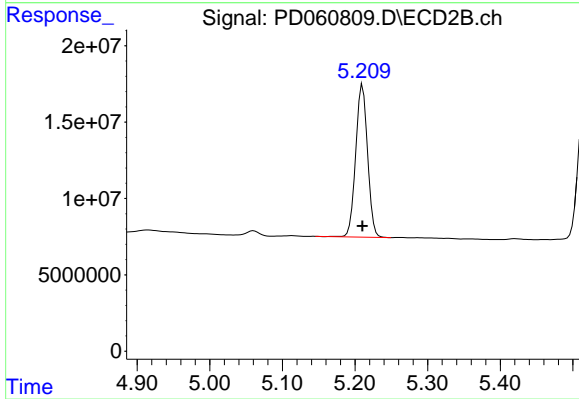
Instrument :
ECD_D
ClientSampleId :



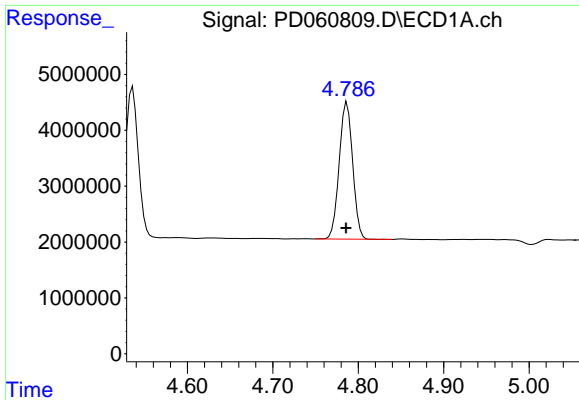
#3 gamma-BHC (Lindane)
R.T.: 4.699 min
Delta R.T.: 0.000 min
Response: 117750687
Conc: 21.96 ng/ml



#4 Heptachlor
R.T.: 4.536 min
Delta R.T.: 0.002 min
Response: 28622501
Conc: 17.04 ng/ml

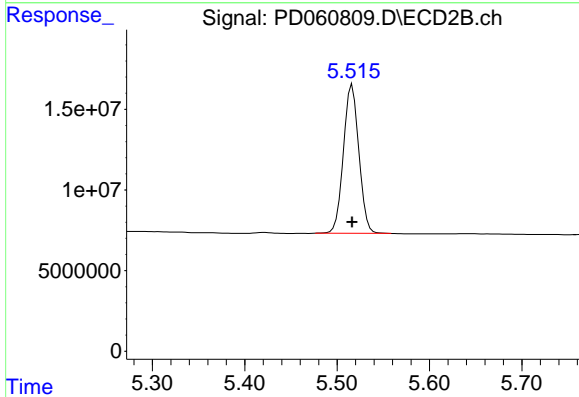


#4 Heptachlor
R.T.: 5.210 min
Delta R.T.: 0.000 min
Response: 113051912
Conc: 21.49 ng/ml

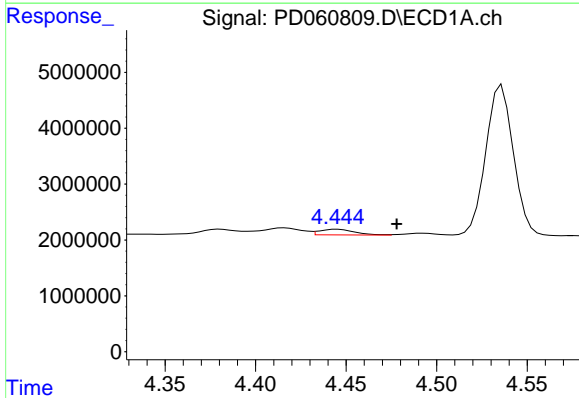


#5 Aldrin
 R.T.: 4.787 min
 Delta R.T.: 0.001 min
 Response: 26845852
 Conc: 16.69 ng/ml

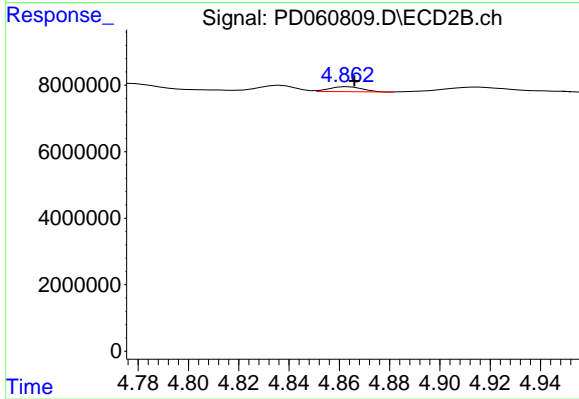
Instrument :
 ECD_D
 ClientSampleId :



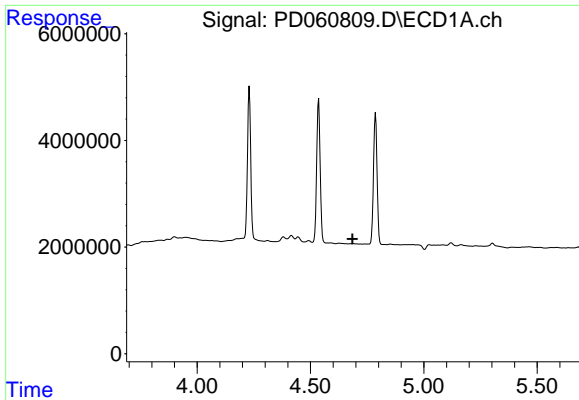
#5 Aldrin
 R.T.: 5.516 min
 Delta R.T.: 0.000 min
 Response: 107099479
 Conc: 21.51 ng/ml



#6 beta-BHC
 R.T.: 4.445 min
 Delta R.T.: -0.033 min
 Response: 1352317
 Conc: 1.76 ng/ml

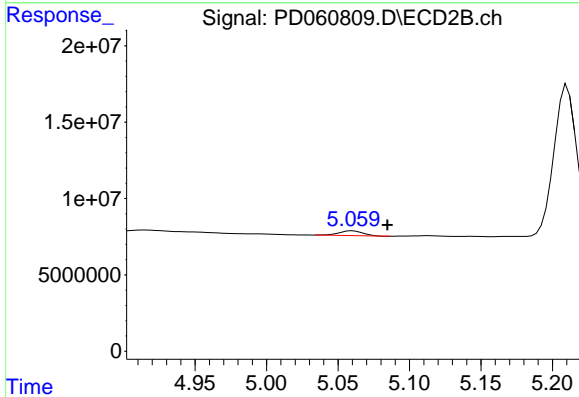


#6 beta-BHC
 R.T.: 4.864 min
 Delta R.T.: -0.002 min
 Response: 1374567
 Conc: 0.58 ng/ml

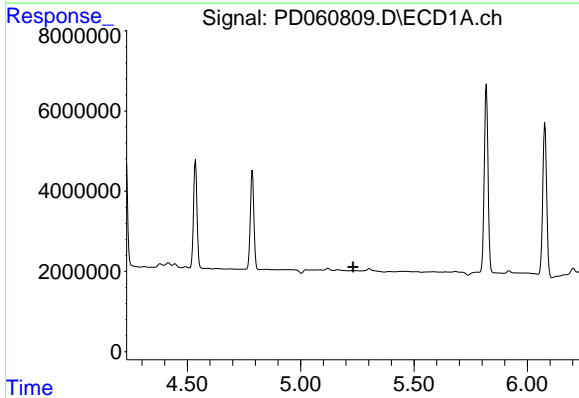


#7 delta-BHC
 R.T.: 0.000 min
 Exp R.T. : 4.686 min
 Response: 0
 Conc: N.D.

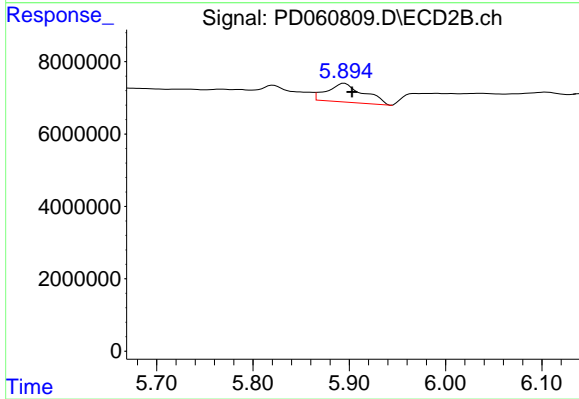
Instrument :
 ECD_D
 ClientSampleId :



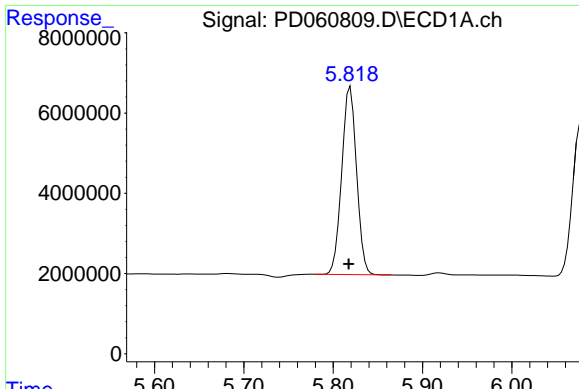
#7 delta-BHC
 R.T.: 5.060 min
 Delta R.T.: -0.024 min
 Response: 3648586
 Conc: 0.77 ng/ml



#8 Heptachlor epoxide
 R.T.: 0.000 min
 Exp R.T. : 5.231 min
 Response: 0
 Conc: N.D.

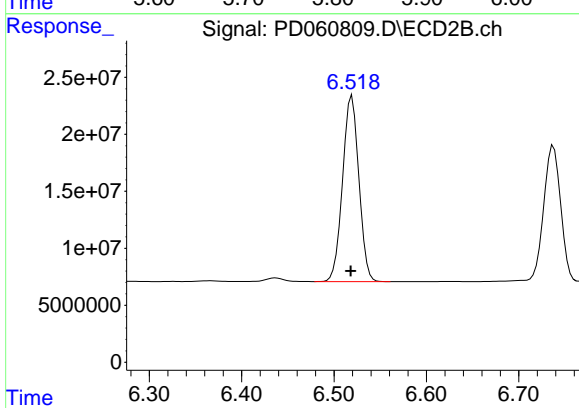


#8 Heptachlor epoxide
 R.T.: 5.895 min
 Delta R.T.: -0.008 min
 Response: 13722974
 Conc: 3.19 ng/ml

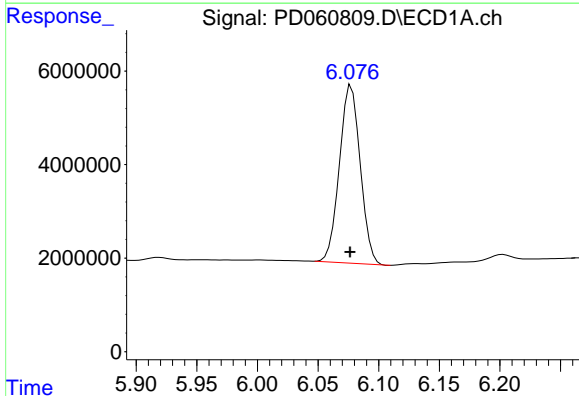


#13 Dieldrin
R.T.: 5.819 min
Delta R.T.: 0.002 min
Response: 53974807
Conc: 33.99 ng/ml

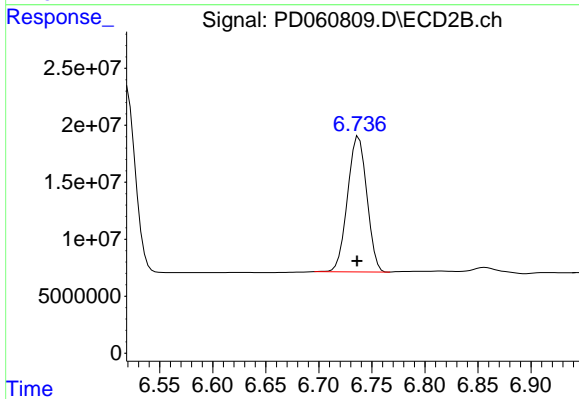
Instrument :
ECD_D
ClientSampled :



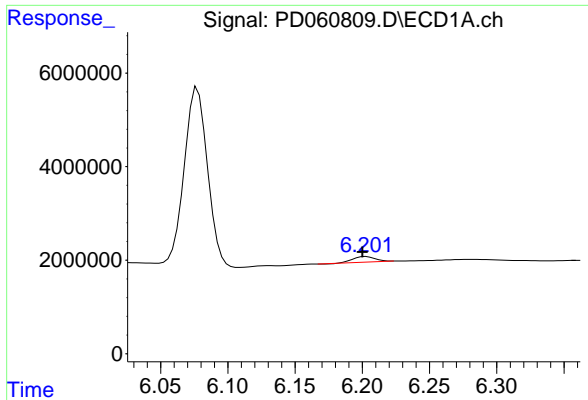
#13 Dieldrin
R.T.: 6.519 min
Delta R.T.: 0.002 min
Response: 200149659
Conc: 42.85 ng/ml



#14 Endrin
R.T.: 6.078 min
Delta R.T.: 0.001 min
Response: 45487711
Conc: 35.16 ng/ml

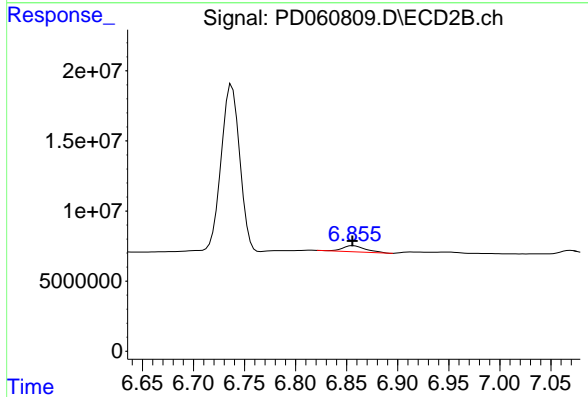


#14 Endrin
R.T.: 6.738 min
Delta R.T.: 0.001 min
Response: 150668936
Conc: 40.87 ng/ml

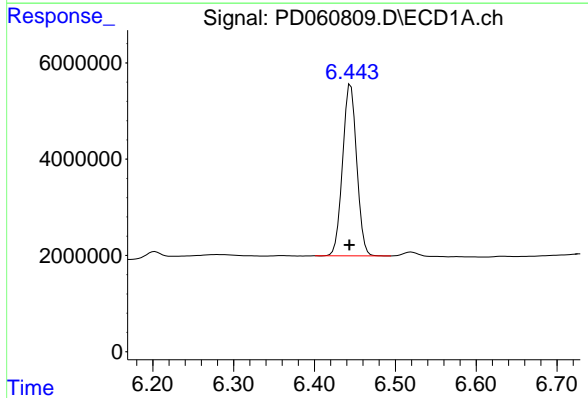


#16 4,4'-DDD
 R.T.: 6.203 min
 Delta R.T.: 0.002 min
 Response: 1317760
 Conc: 1.03 ng/ml

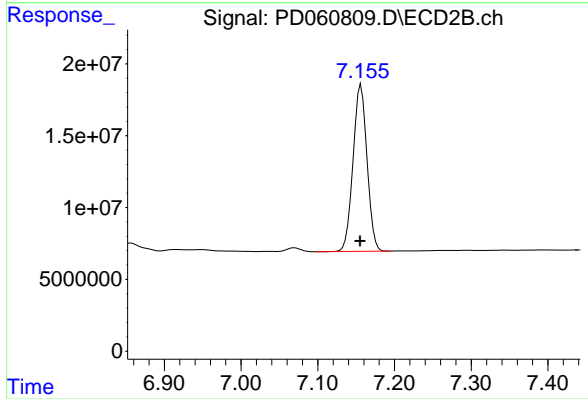
Instrument :
 ECD_D
 ClientSampled :



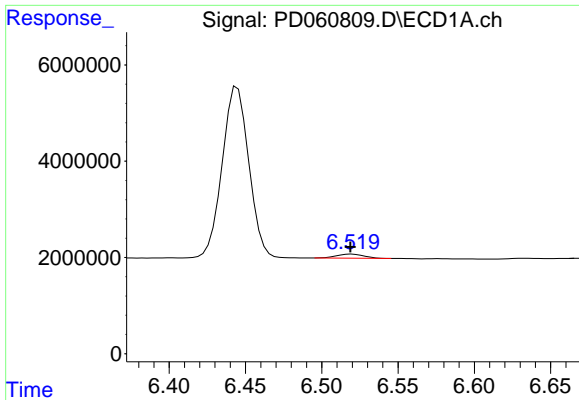
#16 4,4'-DDD
 R.T.: 6.857 min
 Delta R.T.: 0.001 min
 Response: 7101246
 Conc: 1.93 ng/ml



#17 4,4'-DDT
 R.T.: 6.445 min
 Delta R.T.: 0.001 min
 Response: 43201895
 Conc: 33.17 ng/ml

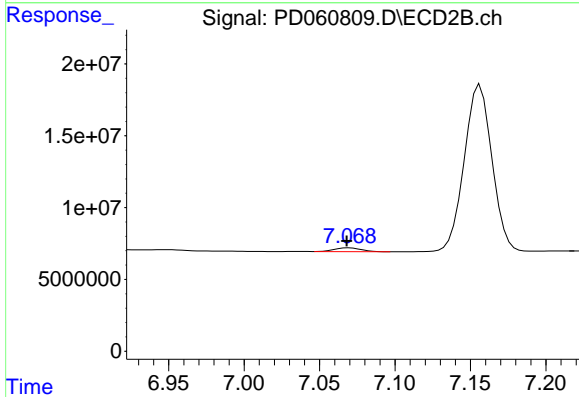


#17 4,4'-DDT
 R.T.: 7.157 min
 Delta R.T.: 0.001 min
 Response: 148117389
 Conc: 41.28 ng/ml

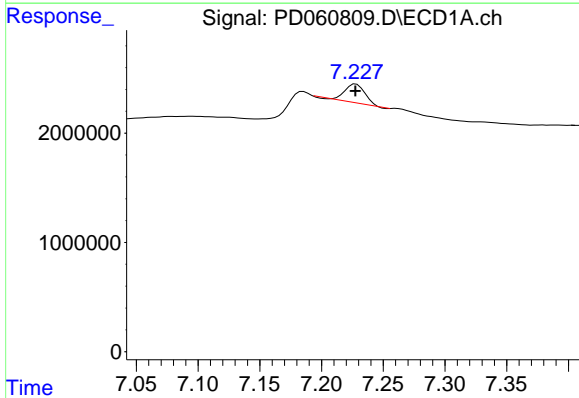


#18 Endrin aldehyde
 R.T.: 6.520 min
 Delta R.T.: 0.001 min
 Response: 1050092
 Conc: 0.98 ng/ml

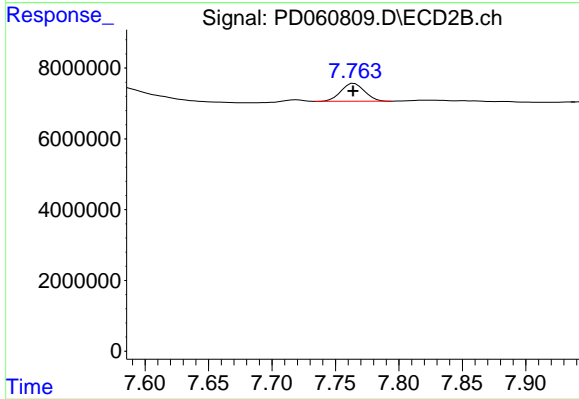
Instrument :
 ECD_D
 ClientSampled :



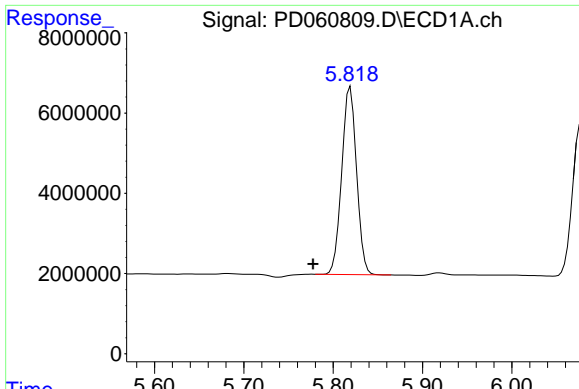
#18 Endrin aldehyde
 R.T.: 7.070 min
 Delta R.T.: 0.002 min
 Response: 3240524
 Conc: 1.07 ng/ml



#21 Endrin ketone
 R.T.: 7.228 min
 Delta R.T.: 0.000 min
 Response: 2000629
 Conc: 1.38 ng/ml

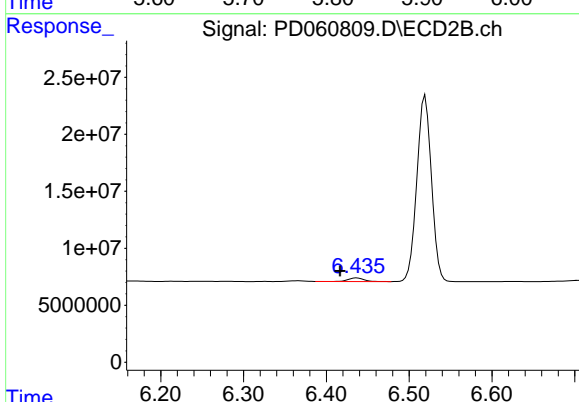


#21 Endrin ketone
 R.T.: 7.765 min
 Delta R.T.: 0.000 min
 Response: 6587650
 Conc: 1.74 ng/ml

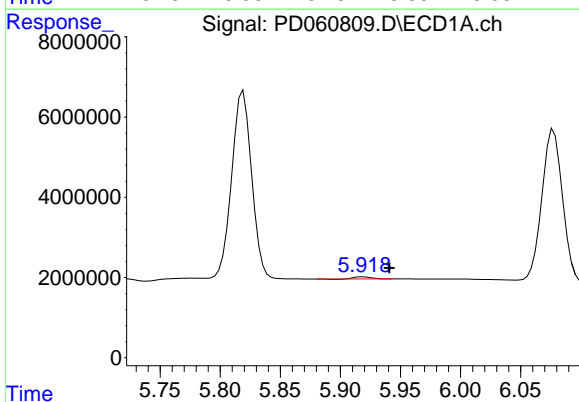


#22 Toxaphene-1
 R.T.: 5.819 min
 Delta R.T.: 0.042 min
 Response: 53974807
 Conc: 4073.88 ng/ml

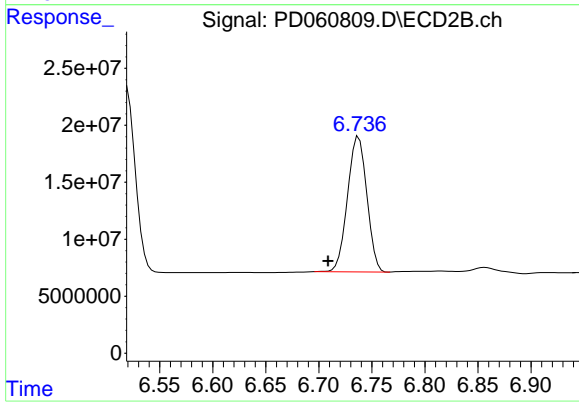
Instrument :
 ECD_D
 ClientSampleId :



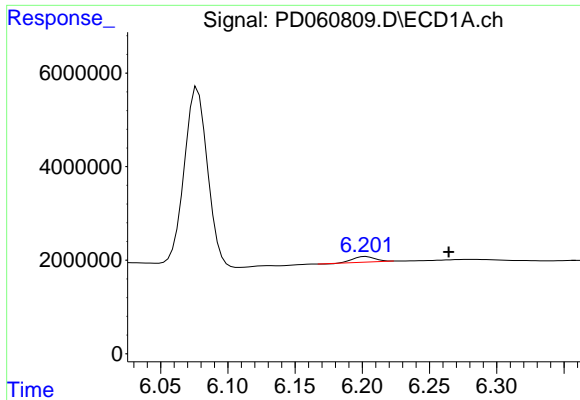
#22 Toxaphene-1
 R.T.: 6.437 min
 Delta R.T.: 0.020 min
 Response: 4054291
 Conc: 141.86 ng/ml



#23 Toxaphene-2
 R.T.: 5.919 min
 Delta R.T.: -0.022 min
 Response: 493082
 Conc: 36.60 ng/ml

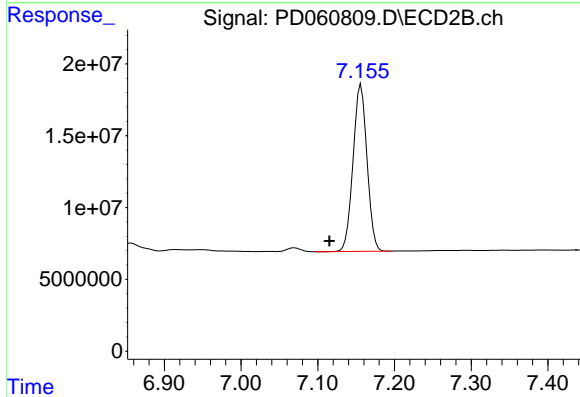


#23 Toxaphene-2
 R.T.: 6.738 min
 Delta R.T.: 0.029 min
 Response: 150668936
 Conc: 4287.97 ng/ml

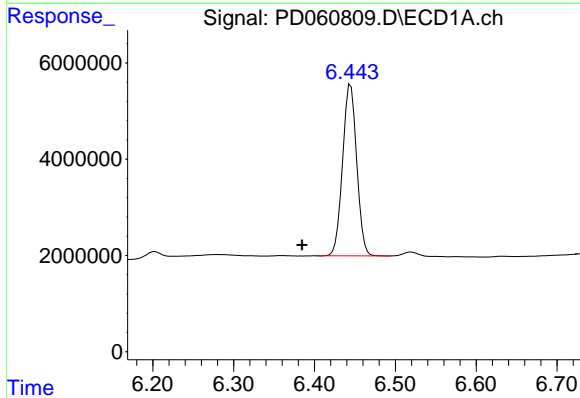


#24 Toxaphene-3
 R.T.: 6.203 min
 Delta R.T.: -0.062 min
 Response: 1317760
 Conc: 86.53 ng/ml

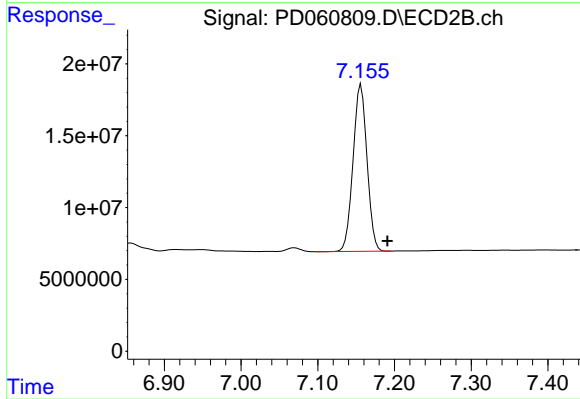
Instrument :
 ECD_D
 ClientSampleId :



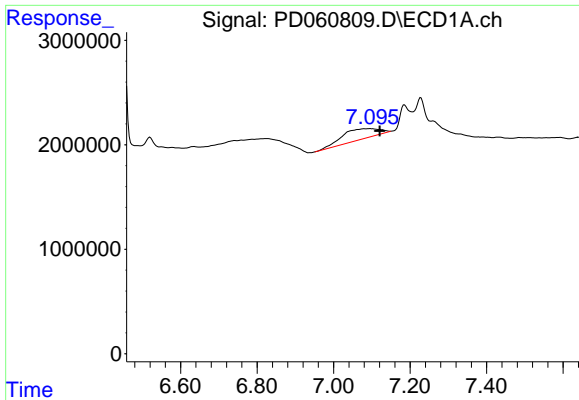
#24 Toxaphene-3
 R.T.: 7.157 min
 Delta R.T.: 0.041 min
 Response: 148117389
 Conc: 2851.24 ng/ml



#25 Toxaphene-4
 R.T.: 6.445 min
 Delta R.T.: 0.060 min
 Response: 43201895
 Conc: 1251.15 ng/ml

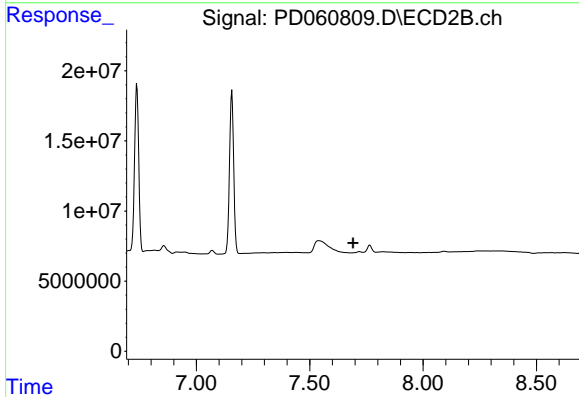


#25 Toxaphene-4
 R.T.: 7.157 min
 Delta R.T.: -0.034 min
 Response: 148117389
 Conc: 1032.69 ng/ml

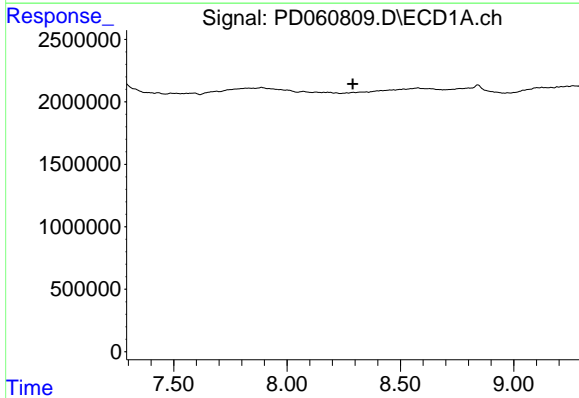


#26 Toxaphene-5
 R.T.: 7.096 min
 Delta R.T.: -0.025 min
 Response: 6649390
 Conc: 177.67 ng/ml

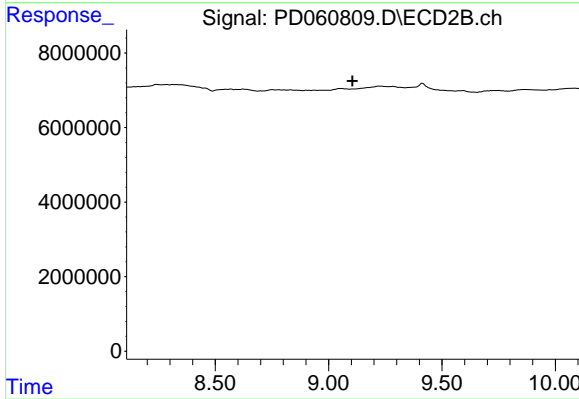
Instrument :
 ECD_D
 ClientSampled :



#26 Toxaphene-5
 R.T.: 0.000 min
 Exp R.T. : 7.691 min
 Response: 0
 Conc: N.D.



#27 Decachlorobiphenyl
 R.T.: 0.000 min
 Exp R.T. : 8.290 min
 Response: 0
 Conc: N.D.



#27 Decachlorobiphenyl
 R.T.: 0.000 min
 Exp R.T. : 9.106 min
 Response: 0
 Conc: N.D.