

Data Path : Z:\pestpcbsrv\HPCHEM1\ECD\_D\Data\PD122222\  
 Data File : PD073410.D  
 Signal(s) : Signal #1: ECD1A.ch Signal #2: ECD2B.ch  
 Acq On : 21 Dec 2022 17:52  
 Operator : AR\AJ  
 Sample : TOXAPH401  
 Misc :  
 ALS Vial : 7 Sample Multiplier: 1

Instrument :  
 ECD\_D  
 ClientSampleId :

Integration File signal 1: autoint1.e  
 Integration File signal 2: autoint2.e  
 Quant Time: Dec 22 01:54:29 2022  
 Quant Method : Z:\pestpcbsrv\HPCHEM1\ECD\_D\Method\PD122222CLP-TCLP.M  
 Quant Title : GC Extractables  
 QLast Update : Thu Dec 22 01:41:11 2022  
 Response via : Initial Calibration  
 Integrator: ChemStation

Volume Inj. : 1 µl  
 Signal #1 Phase : ZB-MR2 Signal #2 Phase: ZB-MR1  
 Signal #1 Info : 30M x 0.32mm x0.2 Signal #2 Info : 30M x 0.32mm x 0.50µm

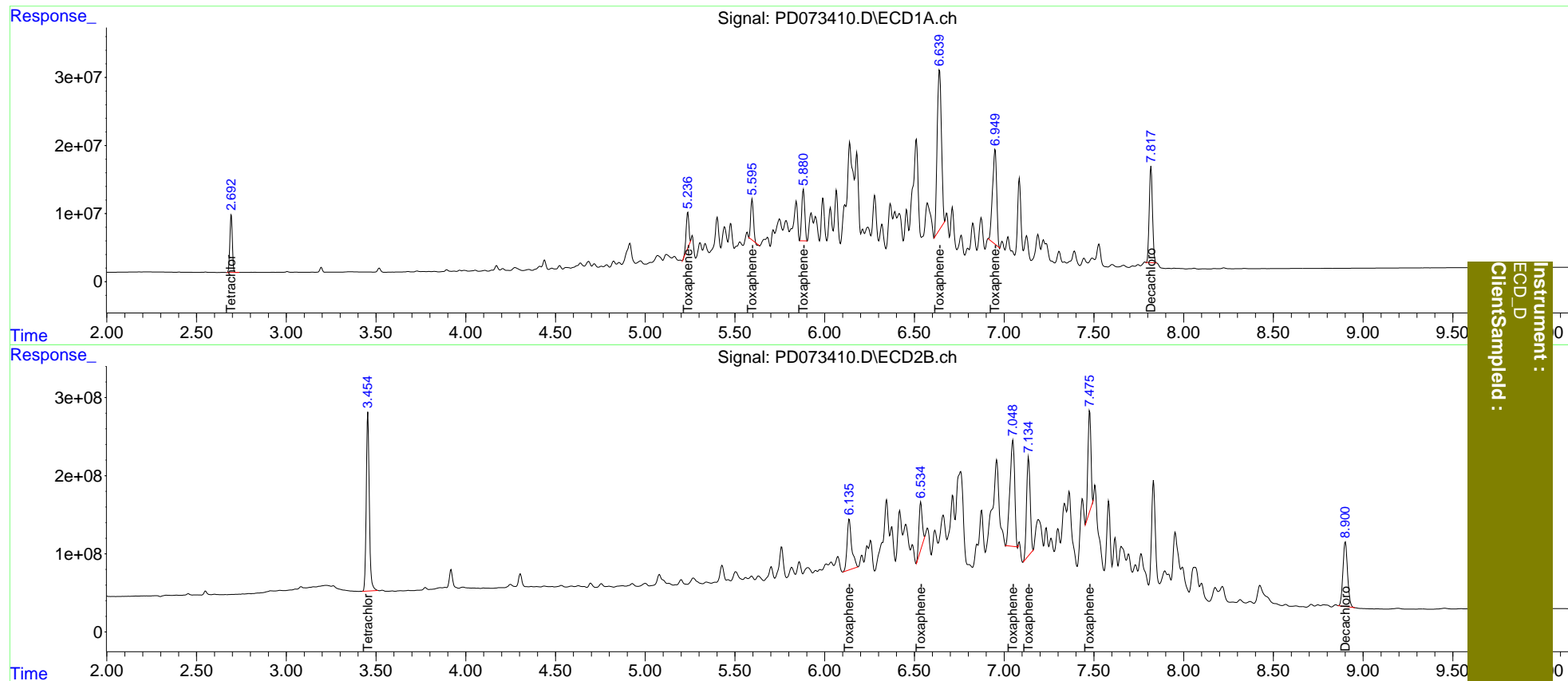
Compound	RT#1	RT#2	Resp#1	Resp#2	ng/ml	ng/ml
-----						
System Monitoring Compounds						
1) SA Tetrachlo...	2.694	3.455	80689280	2714.1E6	39.812	40.220
27) SA Decachlor...	7.818	8.901	176.8E6	1479.7E6	80.840	80.482
Target Compounds						
22) Toxaphene-1	5.238	6.137	53803004	1160.1E6	4073.451	4029.267
23) Toxaphene-2	5.596	6.536	63799390	752.3E6	3862.852	4104.514
24) Toxaphene-3	5.882	7.048	89591000	2487.3E6	4220.758	3952.927
25) Toxaphene-4	6.640	7.136	389.6E6	1763.7E6	4132.067	3907.528
26) Toxaphene-5	6.950	7.477	223.9E6	1542.3E6	3994.314	4022.332
-----						

(f)=RT Delta > 1/2 Window (#)=Amounts differ by > 25% (m)=manual int.

Data Path : Z:\pestpcbsrv\HPCHEM1\ECD\_D\Data\PD122222\  
 Data File : PD073410.D  
 Signal(s) : Signal #1: ECD1A.ch Signal #2: ECD2B.ch  
 Acq On : 21 Dec 2022 17:52  
 Operator : AR\AJ  
 Sample : TOXAPH401  
 Misc :  
 ALS Vial : 7 Sample Multiplier: 1

Integration File signal 1: autoint1.e  
 Integration File signal 2: autoint2.e  
 Quant Time: Dec 22 01:54:29 2022  
 Quant Method : Z:\pestpcbsrv\HPCHEM1\ECD\_D\Method\PD122222CLP-TCLP.M  
 Quant Title : GC Extractables  
 QLast Update : Thu Dec 22 01:41:11 2022  
 Response via : Initial Calibration  
 Integrator: ChemStation

Volume Inj. : 1 µl  
 Signal #1 Phase : ZB-MR2 Signal #2 Phase: ZB-MR1  
 Signal #1 Info : 30M x 0.32mm x0.2 Signal #2 Info : 30M x 0.32mm x 0.50µm



Instrument :  
 ECD\_D  
 ClientSampled :