

Data Path : Z:\pestpcbsrv\HPCHEM1\ECD_D\Data\PD122223\
 Data File : PD080258.D
 Signal(s) : Signal #1: ECD1A.ch Signal #2: ECD2B.ch
 Acq On : 20 Dec 2023 12:24
 Operator : AR\AJ
 Sample : 05818-02
 Misc :
 ALS Vial : 15 Sample Multiplier: 1

Integration File signal 1: autoint1.e
 Integration File signal 2: autoint2.e
 Quant Time: Dec 20 20:31:44 2023
 Quant Method : Z:\pestpcbsrv\HPCHEM1\ECD_D\Method\PD121623CLP.M
 Quant Title : GC Extractables
 QLast Update : Mon Dec 18 00:44:33 2023
 Response via : Initial Calibration
 Integrator: ChemStation

Volume Inj. : 1 µl
 Signal #1 Phase : ZB-MR1 Signal #2 Phase: ZB-MR2
 Signal #1 Info : 30M x 0.32mm x0.5 Signal #2 Info : 30M x 0.32mm x 0.25µm

Compound	RT#1	RT#2	Resp#1	Resp#2	ng/ml	ng/ml

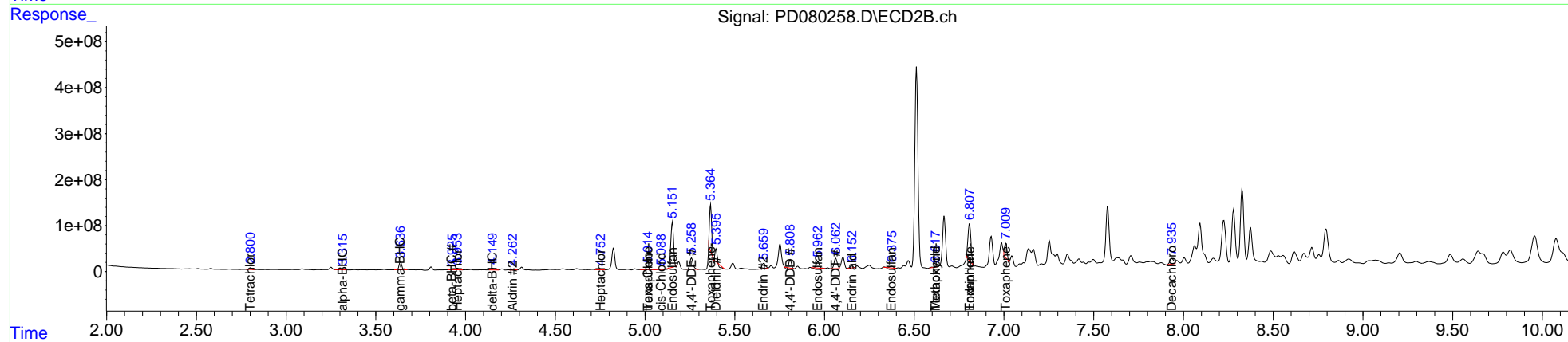
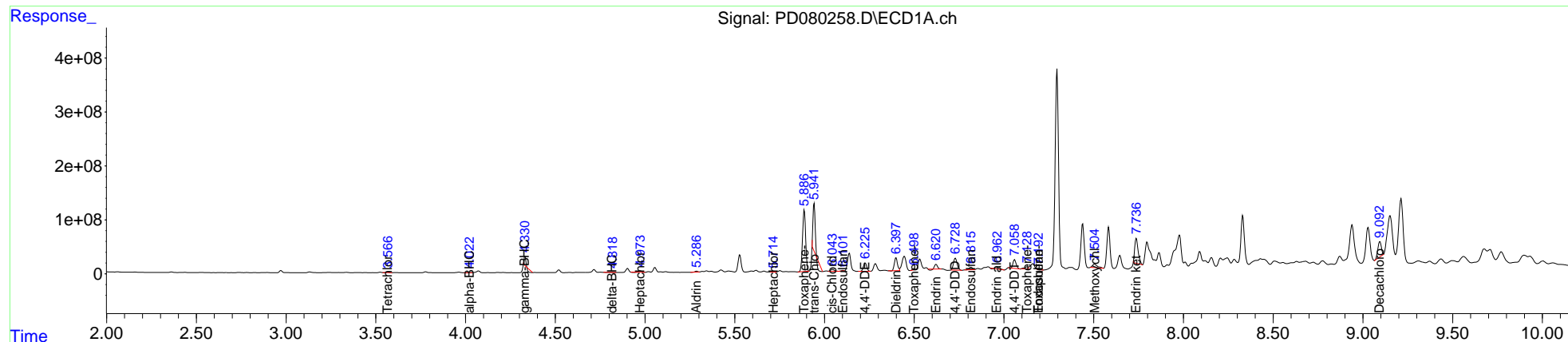
System Monitoring Compounds						
1) SA Tetrachlo...	3.568	2.801	13458711	37705266	10.541	16.957 #
27) SA Decachlor...	9.095	7.936	383.2E6	179.2E6	238.372	74.651 #
Target Compounds						
2) A alpha-BHC	4.024	3.316	1333306	11607384	0.647	3.404 #
3) MA gamma-BHC...	4.331f	3.638	64548743	185.2E6	32.506	57.528 #
4) MA Heptachlor	4.974	3.955	21886325	37535078	10.481	11.721
5) MB Aldrin	5.287	4.264	17257156	11786989	7.715	3.336 #
7) B delta-BHC	4.817	4.150	1212159	49361224	0.528	12.697 #
8) B Heptachlo...	5.715	4.751	6812762	4173989	3.171	1.232 #
9) A Endosulfan I	6.103	5.153	6688646	1031.9E6	3.755	376.424 #
10) B trans-Chl...	5.942	5.015	594.3E6	82617242	289.578	25.098 #
11) B cis-Chlor...	6.044	5.091	56553589	10898061	26.942	3.242 #
12) B 4,4'-DDE	6.227	5.259	202.6E6	298.0E6	104.877	94.878
13) MA Dieldrin	6.399	5.396	282.5E6	142.3E6	151.800	47.496 #
14) MA Endrin	6.622	5.661	82976426	144.8E6	52.976	55.036
15) B Endosulfa...	6.817	5.963	56411432	159.8E6	30.090	55.106 #
16) A 4,4'-DDD	6.729	5.809	317.2E6	156.2E6	228.693	67.952 #
17) MA 4,4'-DDT	7.059	6.063	200.0E6	269.1E6	135.317	111.618
18) B Endrin al...	6.961	6.153	50091628	46202964	33.580	20.037 #
19) B Endosulfa...	7.193	6.374	25445758	46739756	13.873	16.664
20) A Methoxychlor	7.505	6.619	124.1E6	20155315	156.731	16.011 #
21) B Endrin ke...	7.738f	6.808f	613.2E6	900.4E6	315.162	281.369
22) Toxaphene-1	5.887	5.015	1380.8E6	82617242	222827.768	4845.969 #
23) Toxaphene-2	6.499	5.366	20515914	836.5E6	1149.058	48778.766 #
24) Toxaphene-3	7.129	6.619	57765906	20155315	1107.820	326.392 #
25) Toxaphene-4	7.193	6.808f	25445758	900.4E6	649.115	10689.358 #
26) Toxaphene-5	0.000	7.010f	0	324.2E6	N.D.	9138.136

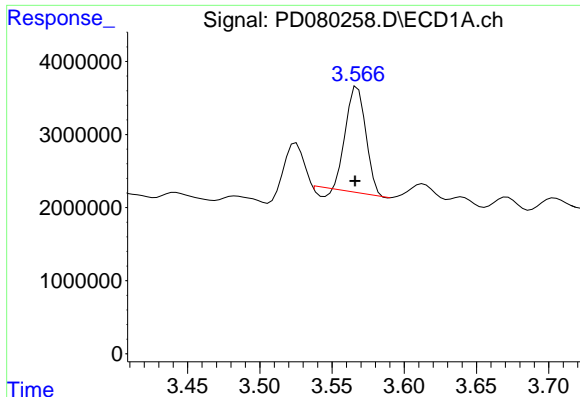
(f)=RT Delta > 1/2 Window (#)=Amounts differ by > 25% (m)=manual int.

Data Path : Z:\pestpcbsrv\HPCHEM1\ECD_D\Data\PD122223\
 Data File : PD080258.D
 Signal(s) : Signal #1: ECD1A.ch Signal #2: ECD2B.ch
 Acq On : 20 Dec 2023 12:24
 Operator : AR\AJ
 Sample : 05818-02
 Misc :
 ALS Vial : 15 Sample Multiplier: 1

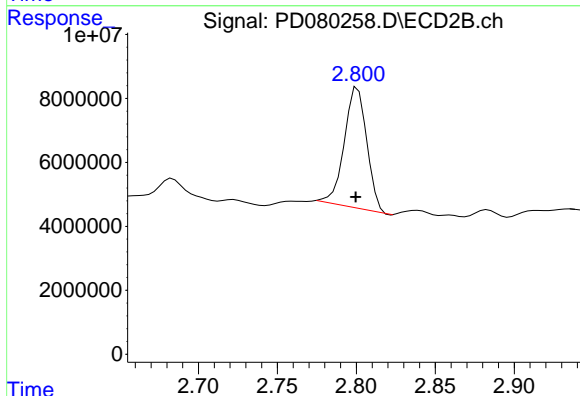
Integration File signal 1: autoint1.e
 Integration File signal 2: autoint2.e
 Quant Time: Dec 20 20:31:44 2023
 Quant Method : Z:\pestpcbsrv\HPCHEM1\ECD_D\Method\PD121623CLP.M
 Quant Title : GC Extractables
 QLast Update : Mon Dec 18 00:44:33 2023
 Response via : Initial Calibration
 Integrator: ChemStation

Volume Inj. : 1 µl
 Signal #1 Phase : ZB-MR1 Signal #2 Phase: ZB-MR2
 Signal #1 Info : 30M x 0.32mm x0.5 Signal #2 Info : 30M x 0.32mm x 0.25µm

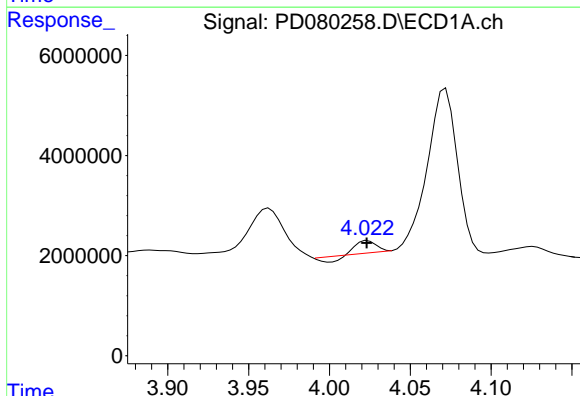




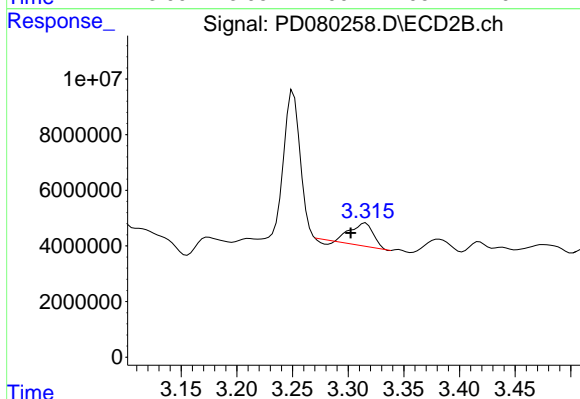
#1 Tetrachloro-m-xylene
 R.T.: 3.568 min
 Delta R.T.: 0.002 min
 Response: 13458711
 Conc: 10.54 ng/ml



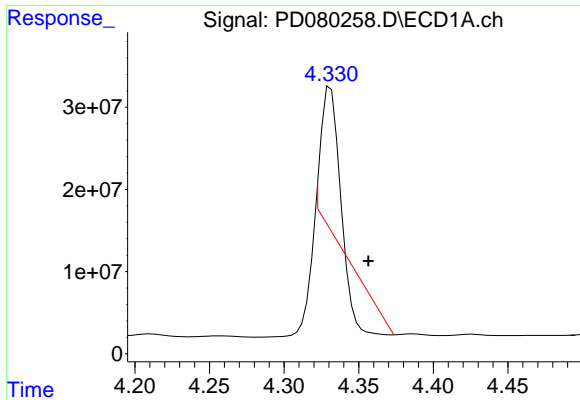
#1 Tetrachloro-m-xylene
 R.T.: 2.801 min
 Delta R.T.: 0.001 min
 Response: 37705266
 Conc: 16.96 ng/ml



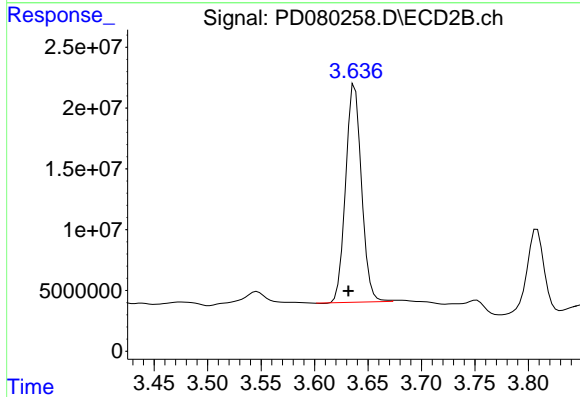
#2 alpha-BHC
 R.T.: 4.024 min
 Delta R.T.: 0.000 min
 Response: 1333306
 Conc: 0.65 ng/ml



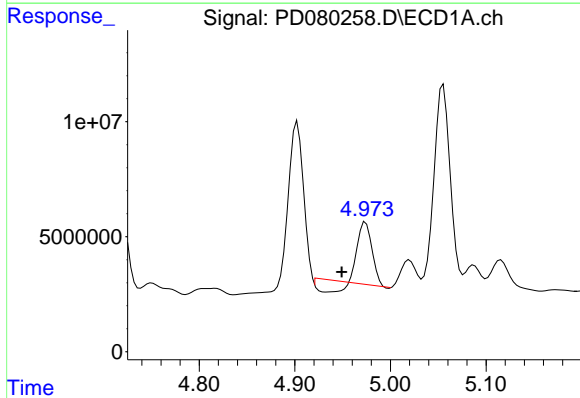
#2 alpha-BHC
 R.T.: 3.316 min
 Delta R.T.: 0.013 min
 Response: 11607384
 Conc: 3.40 ng/ml



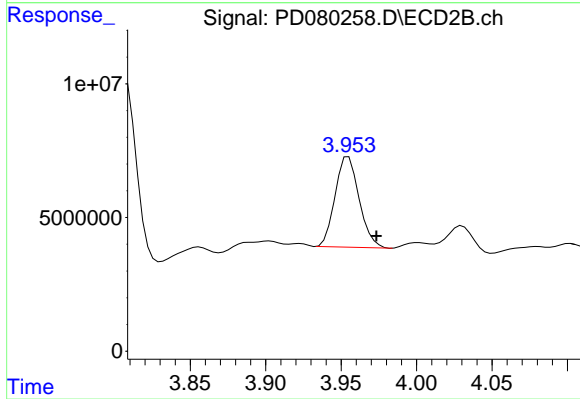
#3 gamma-BHC (Lindane)
 R.T.: 4.331 min
 Delta R.T.: -0.025 min
 Response: 64548743
 Conc: 32.51 ng/ml



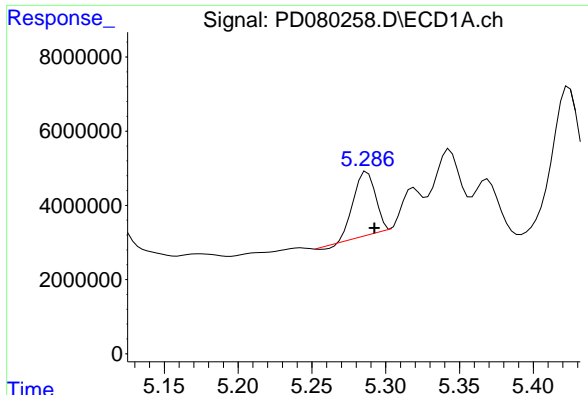
#3 gamma-BHC (Lindane)
 R.T.: 3.638 min
 Delta R.T.: 0.006 min
 Response: 185181014
 Conc: 57.53 ng/ml



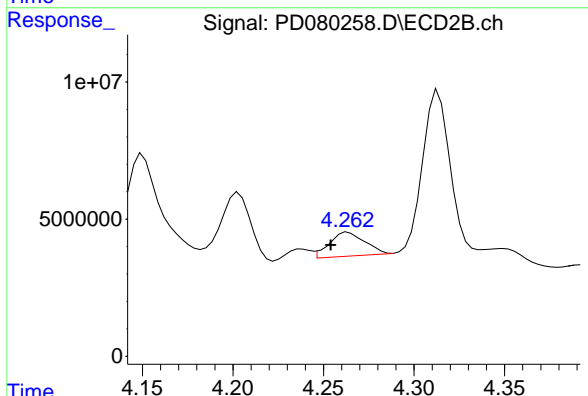
#4 Heptachlor
 R.T.: 4.974 min
 Delta R.T.: 0.025 min
 Response: 21886325
 Conc: 10.48 ng/ml



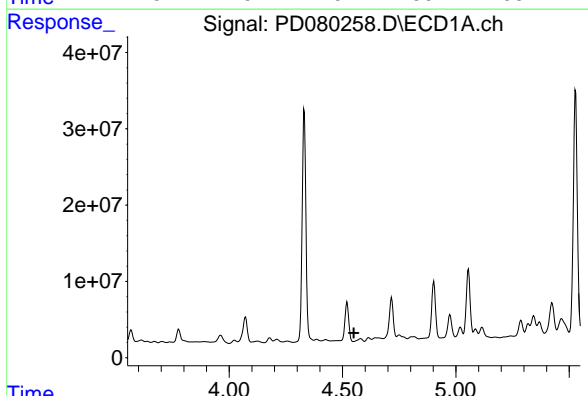
#4 Heptachlor
 R.T.: 3.955 min
 Delta R.T.: -0.018 min
 Response: 37535078
 Conc: 11.72 ng/ml



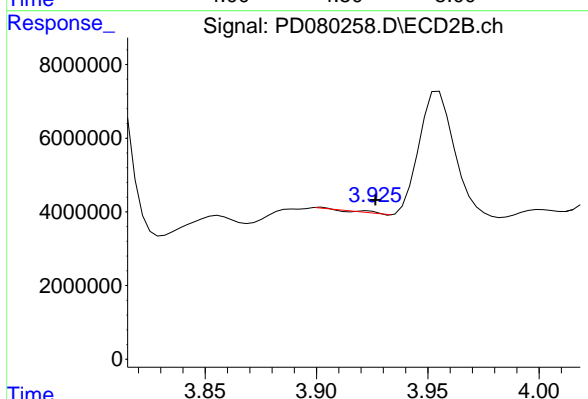
#5 Aldrin
R.T.: 5.287 min
Delta R.T.: -0.005 min
Response: 17257156
Conc: 7.72 ng/ml



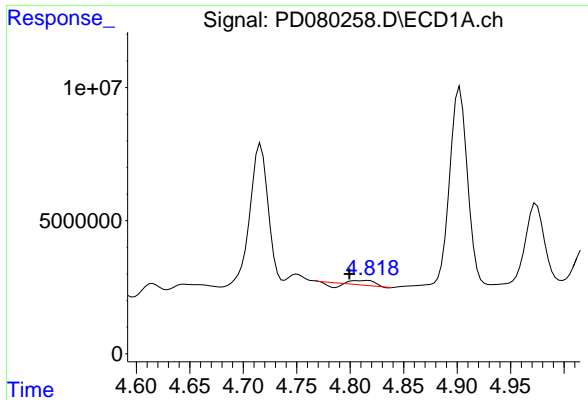
#5 Aldrin
R.T.: 4.264 min
Delta R.T.: 0.010 min
Response: 11786989
Conc: 3.34 ng/ml



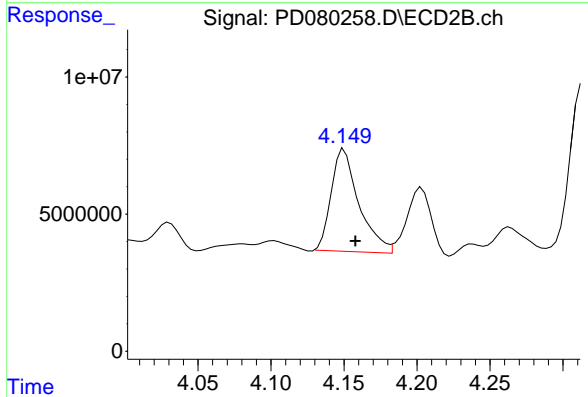
#6 beta-BHC
R.T.: 4.581 min
Delta R.T.: 0.031 min
Response: -23424874
Conc: N.D.



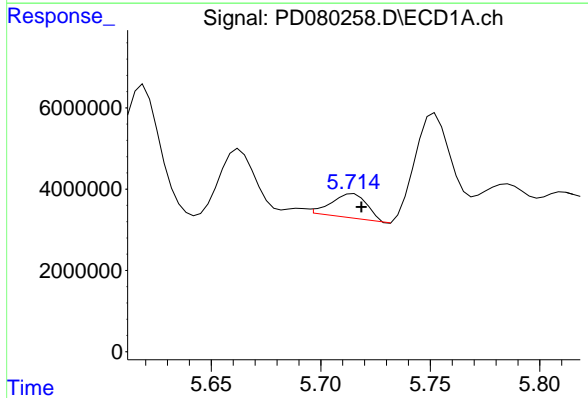
#6 beta-BHC
R.T.: 3.923 min
Delta R.T.: -0.003 min
Response: 286391
Conc: 0.17 ng/ml



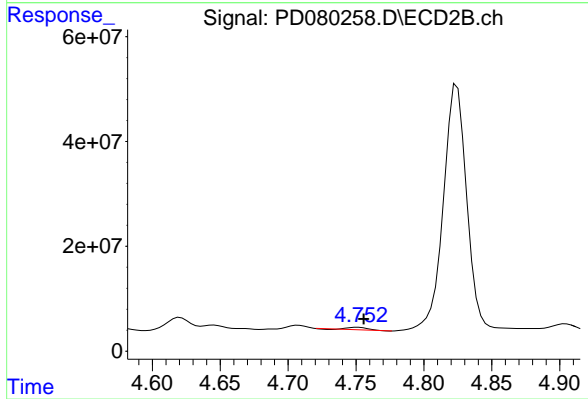
#7 delta-BHC
R.T.: 4.817 min
Delta R.T.: 0.017 min
Response: 1212159
Conc: 0.53 ng/ml



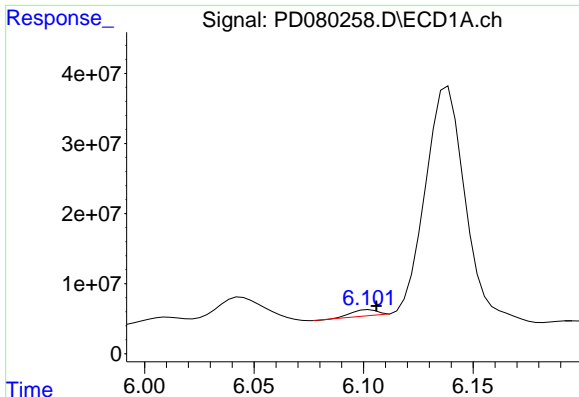
#7 delta-BHC
R.T.: 4.150 min
Delta R.T.: -0.007 min
Response: 49361224
Conc: 12.70 ng/ml



#8 Heptachlor epoxide
R.T.: 5.715 min
Delta R.T.: -0.004 min
Response: 6812762
Conc: 3.17 ng/ml

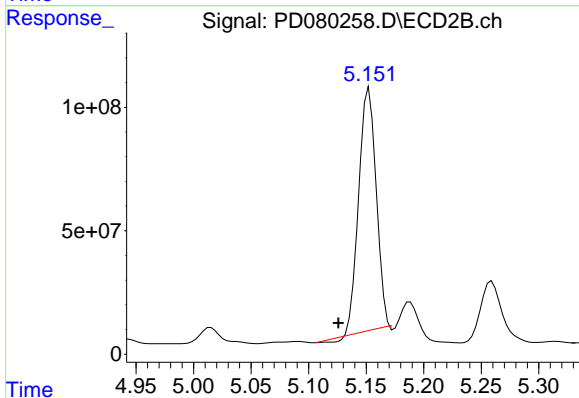


#8 Heptachlor epoxide
R.T.: 4.751 min
Delta R.T.: -0.004 min
Response: 4173989
Conc: 1.23 ng/ml



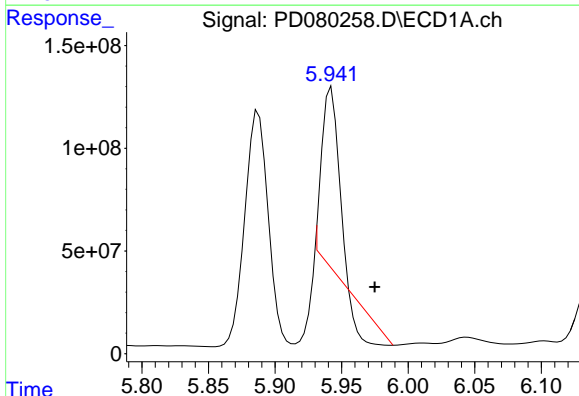
#9 Endosulfan I

R.T.: 6.103 min
 Delta R.T.: -0.003 min
 Response: 6688646
 Conc: 3.75 ng/ml



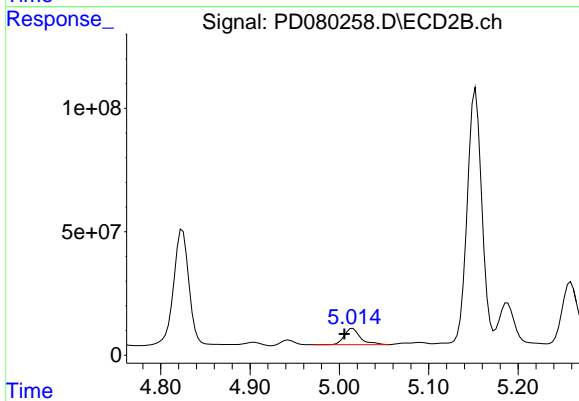
#9 Endosulfan I

R.T.: 5.153 min
 Delta R.T.: 0.027 min
 Response: 1031948782
 Conc: 376.42 ng/ml



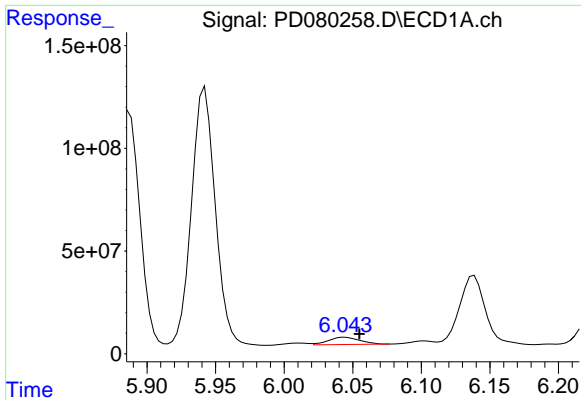
#10 trans-Chlordane

R.T.: 5.942 min
 Delta R.T.: -0.033 min
 Response: 594275995
 Conc: 289.58 ng/ml



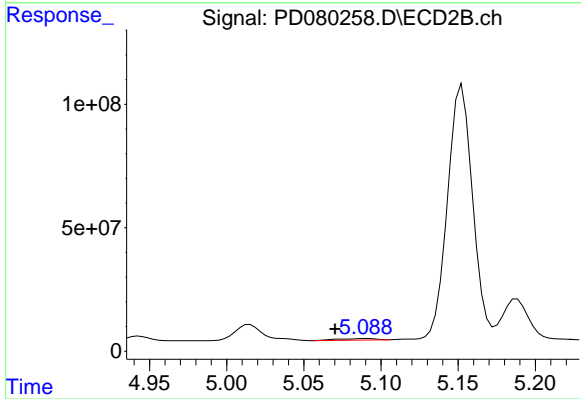
#10 trans-Chlordane

R.T.: 5.015 min
 Delta R.T.: 0.009 min
 Response: 82617242
 Conc: 25.10 ng/ml



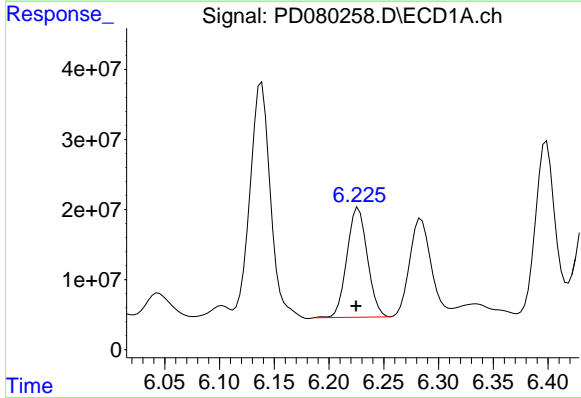
#11 cis-Chlordane

R.T.: 6.044 min
 Delta R.T.: -0.011 min
 Response: 56553589
 Conc: 26.94 ng/ml



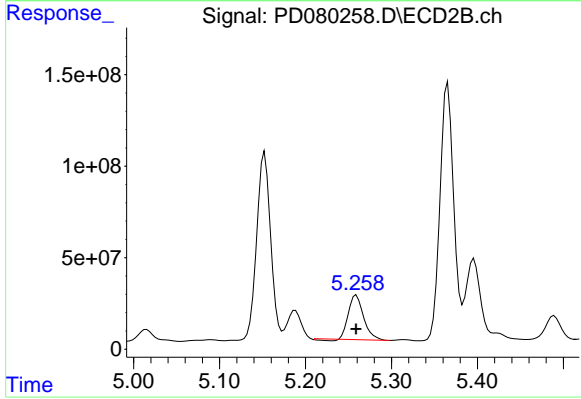
#11 cis-Chlordane

R.T.: 5.091 min
 Delta R.T.: 0.021 min
 Response: 10898061
 Conc: 3.24 ng/ml



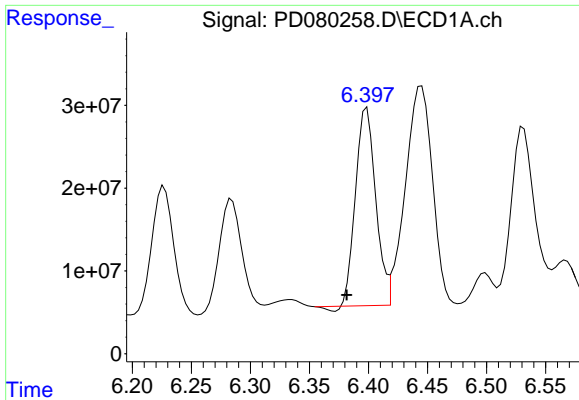
#12 4,4'-DDE

R.T.: 6.227 min
 Delta R.T.: 0.002 min
 Response: 202596982
 Conc: 104.88 ng/ml

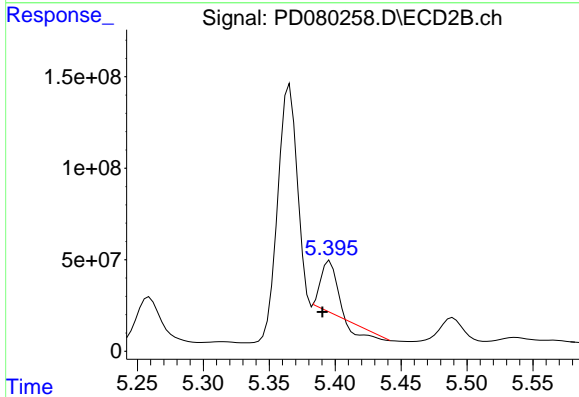


#12 4,4'-DDE

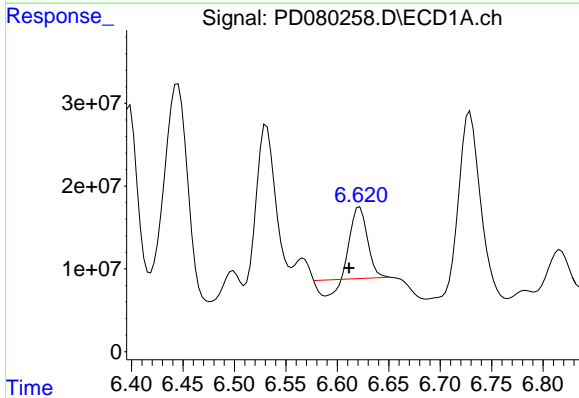
R.T.: 5.259 min
 Delta R.T.: 0.000 min
 Response: 298014425
 Conc: 94.88 ng/ml



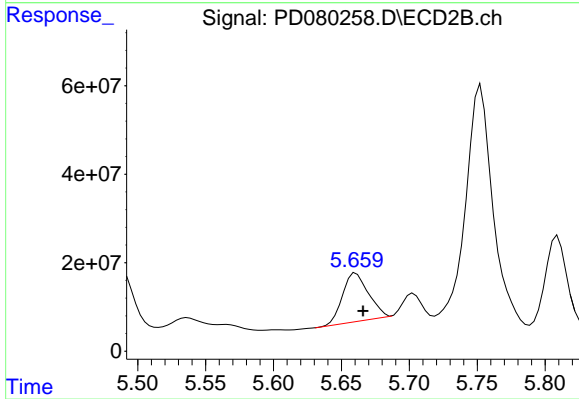
#13 Dieldrin
R.T.: 6.399 min
Delta R.T.: 0.017 min
Response: 282513020
Conc: 151.80 ng/ml



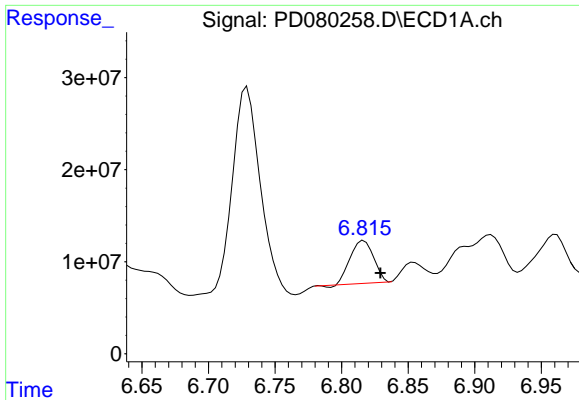
#13 Dieldrin
R.T.: 5.396 min
Delta R.T.: 0.006 min
Response: 142342752
Conc: 47.50 ng/ml



#14 Endrin
R.T.: 6.622 min
Delta R.T.: 0.010 min
Response: 82976426
Conc: 52.98 ng/ml

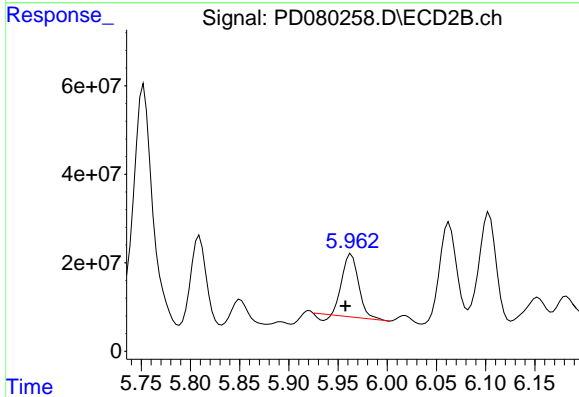


#14 Endrin
R.T.: 5.661 min
Delta R.T.: -0.005 min
Response: 144805358
Conc: 55.04 ng/ml



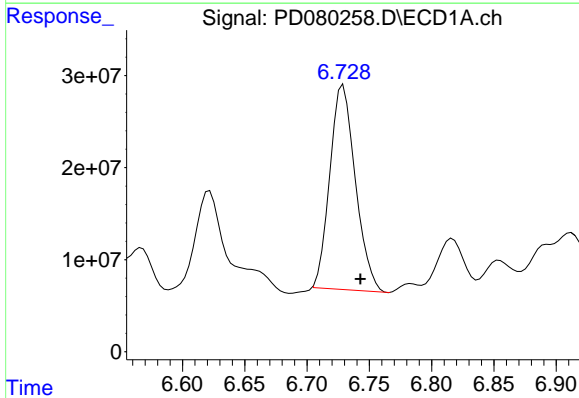
#15 Endosulfan II

R.T.: 6.817 min
 Delta R.T.: -0.012 min
 Response: 56411432
 Conc: 30.09 ng/ml



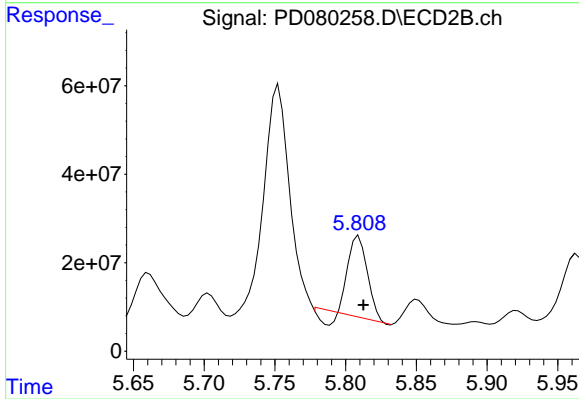
#15 Endosulfan II

R.T.: 5.963 min
 Delta R.T.: 0.006 min
 Response: 159767688
 Conc: 55.11 ng/ml



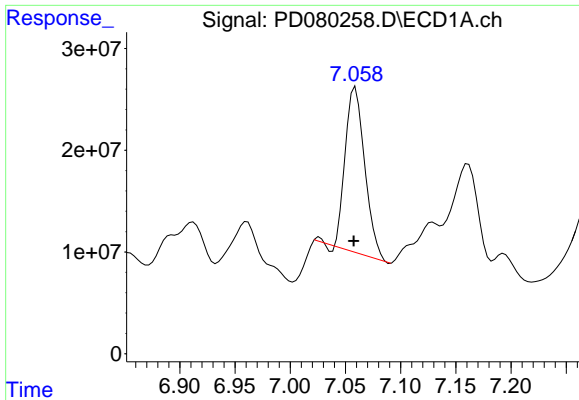
#16 4,4'-DDD

R.T.: 6.729 min
 Delta R.T.: -0.014 min
 Response: 317213517
 Conc: 228.69 ng/ml



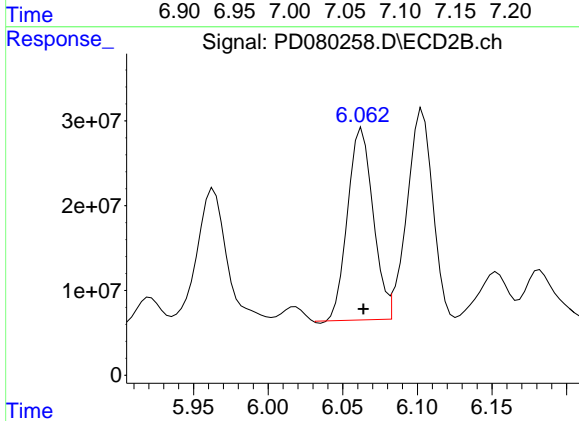
#16 4,4'-DDD

R.T.: 5.809 min
 Delta R.T.: -0.003 min
 Response: 156238688
 Conc: 67.95 ng/ml



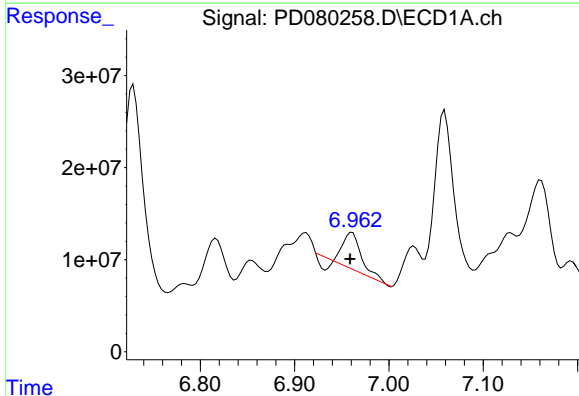
#17 4,4'-DDT

R.T.: 7.059 min
Delta R.T.: 0.001 min
Response: 199965916
Conc: 135.32 ng/ml



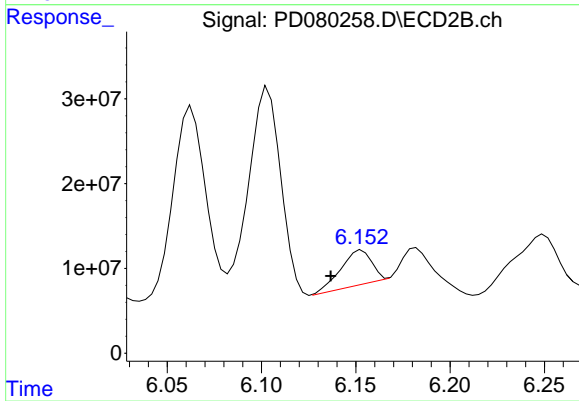
#17 4,4'-DDT

R.T.: 6.063 min
Delta R.T.: 0.000 min
Response: 269131050
Conc: 111.62 ng/ml



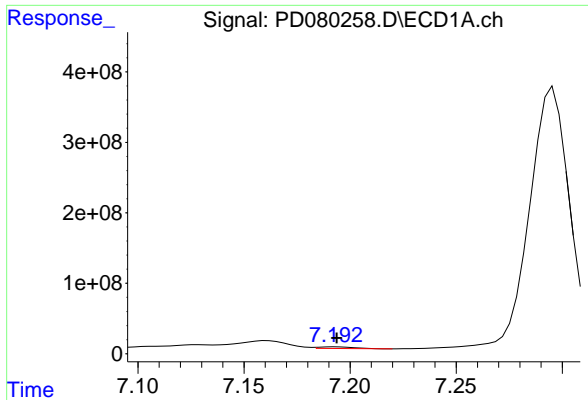
#18 Endrin aldehyde

R.T.: 6.961 min
Delta R.T.: 0.002 min
Response: 50091628
Conc: 33.58 ng/ml

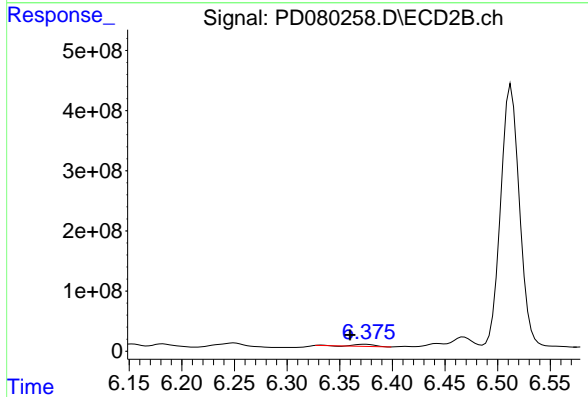


#18 Endrin aldehyde

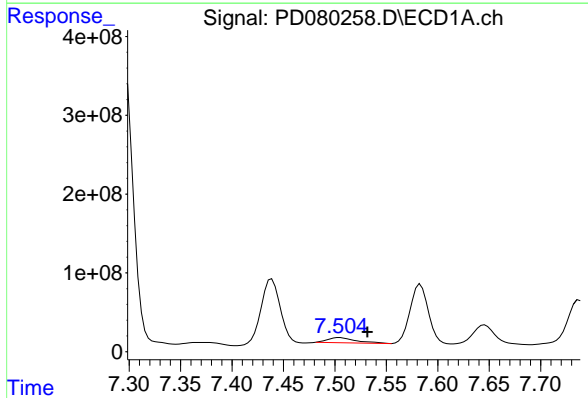
R.T.: 6.153 min
Delta R.T.: 0.016 min
Response: 46202964
Conc: 20.04 ng/ml



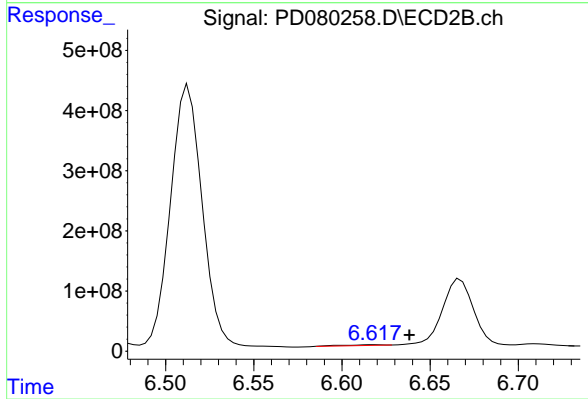
#19 Endosulfan Sulfate
 R.T.: 7.193 min
 Delta R.T.: 0.000 min
 Response: 25445758
 Conc: 13.87 ng/ml



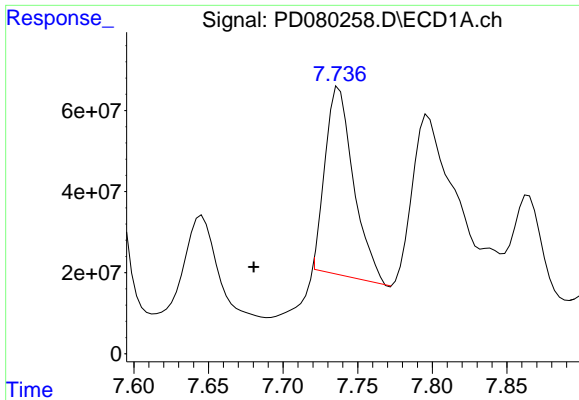
#19 Endosulfan Sulfate
 R.T.: 6.374 min
 Delta R.T.: 0.015 min
 Response: 46739756
 Conc: 16.66 ng/ml



#20 Methoxychlor
 R.T.: 7.505 min
 Delta R.T.: -0.027 min
 Response: 124095730
 Conc: 156.73 ng/ml

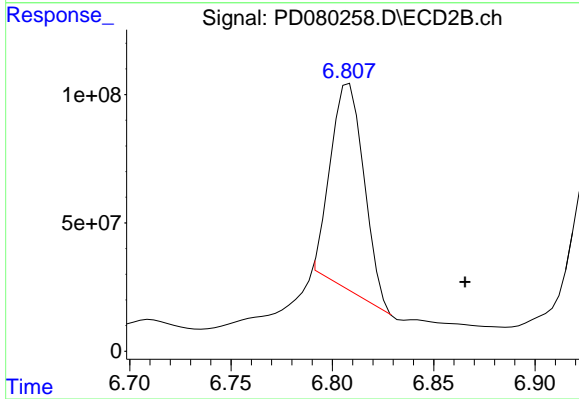


#20 Methoxychlor
 R.T.: 6.619 min
 Delta R.T.: -0.020 min
 Response: 20155315
 Conc: 16.01 ng/ml



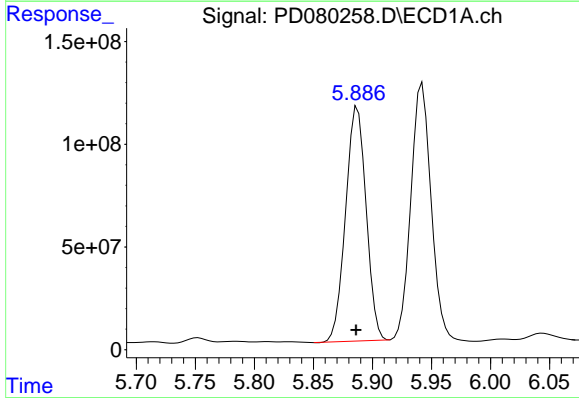
#21 Endrin ketone

R.T.: 7.738 min
 Delta R.T.: 0.057 min
 Response: 613218580
 Conc: 315.16 ng/ml



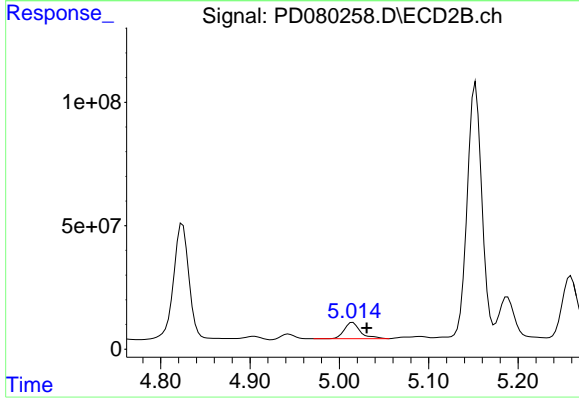
#21 Endrin ketone

R.T.: 6.808 min
 Delta R.T.: -0.057 min
 Response: 900377017
 Conc: 281.37 ng/ml



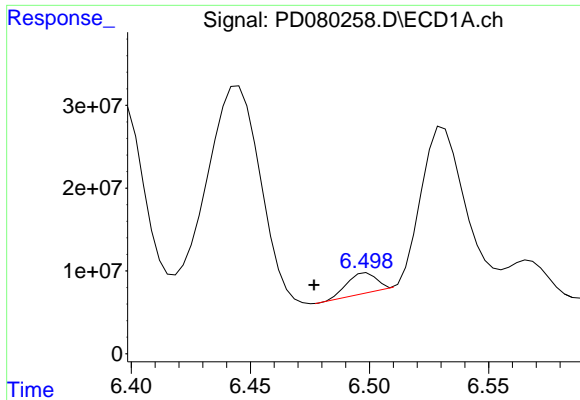
#22 Toxaphene-1

R.T.: 5.887 min
 Delta R.T.: 0.001 min
 Response: 1380795655
 Conc: 222827.77 ng/ml

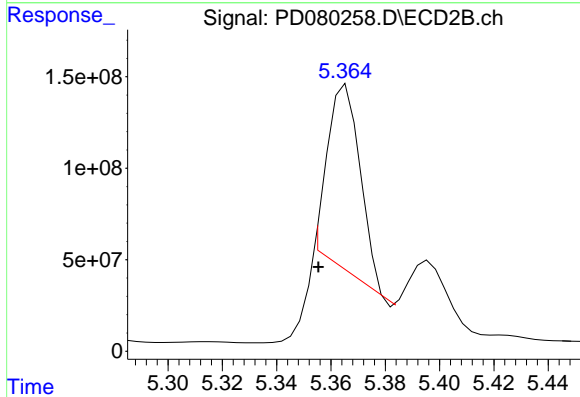


#22 Toxaphene-1

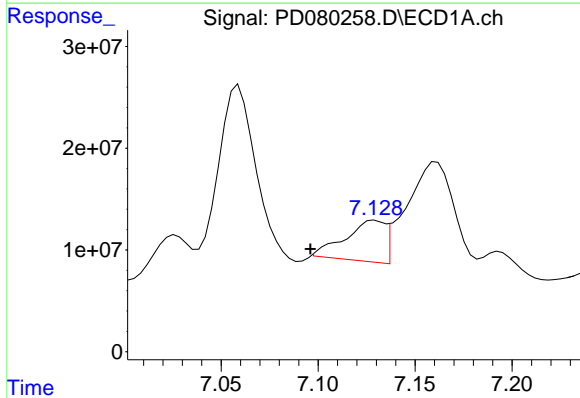
R.T.: 5.015 min
 Delta R.T.: -0.016 min
 Response: 82617242
 Conc: 4845.97 ng/ml



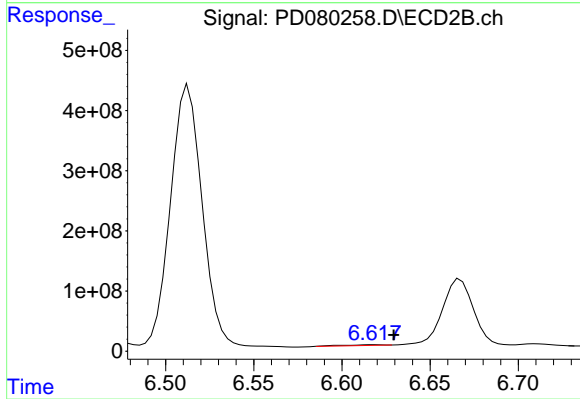
#23 Toxaphene-2
 R.T.: 6.499 min
 Delta R.T.: 0.022 min
 Response: 20515914
 Conc: 1149.06 ng/ml



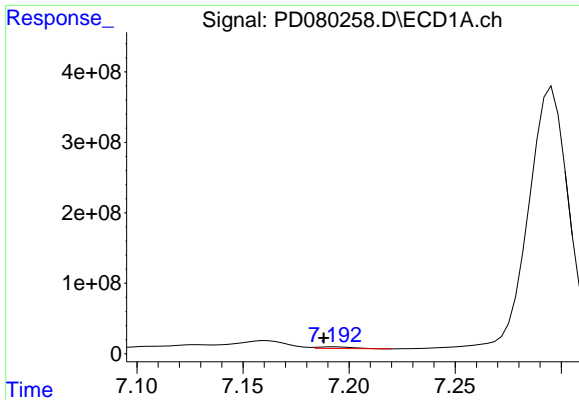
#23 Toxaphene-2
 R.T.: 5.366 min
 Delta R.T.: 0.010 min
 Response: 836533035
 Conc: 48778.77 ng/ml



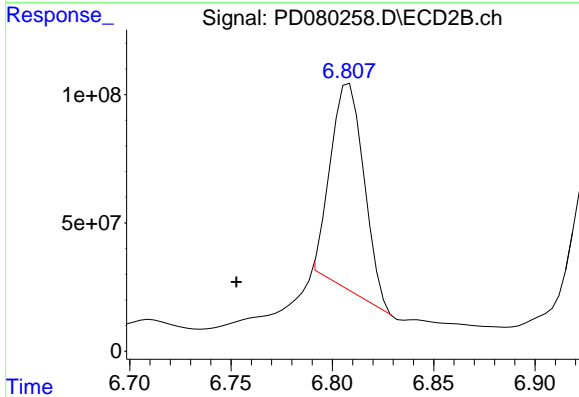
#24 Toxaphene-3
 R.T.: 7.129 min
 Delta R.T.: 0.033 min
 Response: 57765906
 Conc: 1107.82 ng/ml



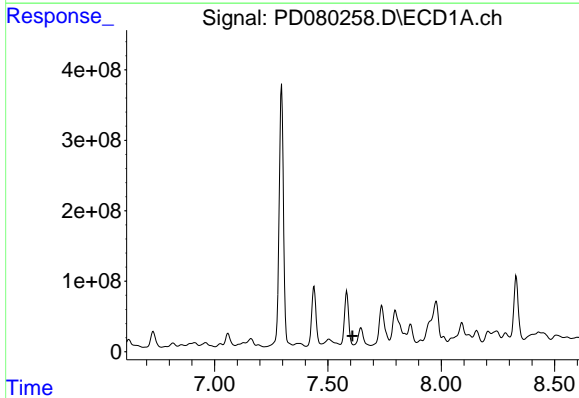
#24 Toxaphene-3
 R.T.: 6.619 min
 Delta R.T.: -0.011 min
 Response: 20155315
 Conc: 326.39 ng/ml



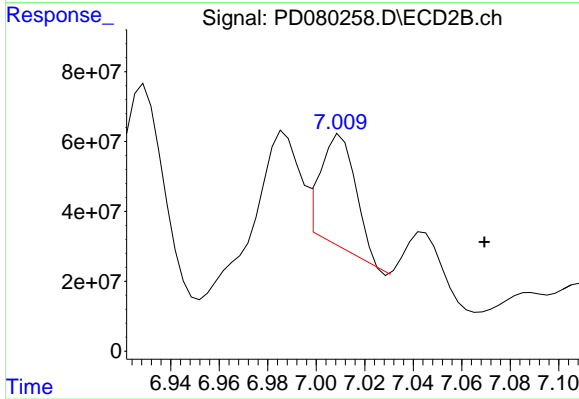
#25 Toxaphene-4
 R.T.: 7.193 min
 Delta R.T.: 0.005 min
 Response: 25445758
 Conc: 649.12 ng/ml



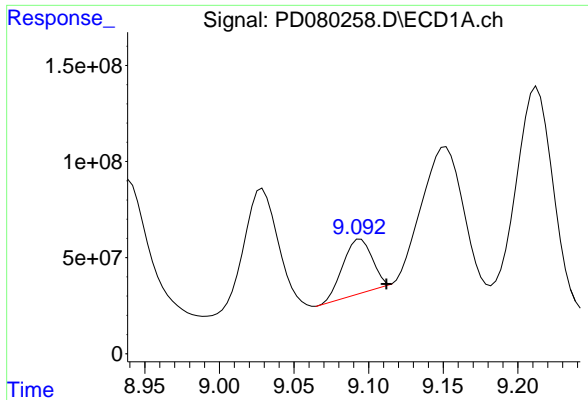
#25 Toxaphene-4
 R.T.: 6.808 min
 Delta R.T.: 0.056 min
 Response: 900377017
 Conc: 10689.36 ng/ml



#26 Toxaphene-5
 R.T.: 0.000 min
 Exp R.T. : 7.609 min
 Response: 0
 Conc: N.D.

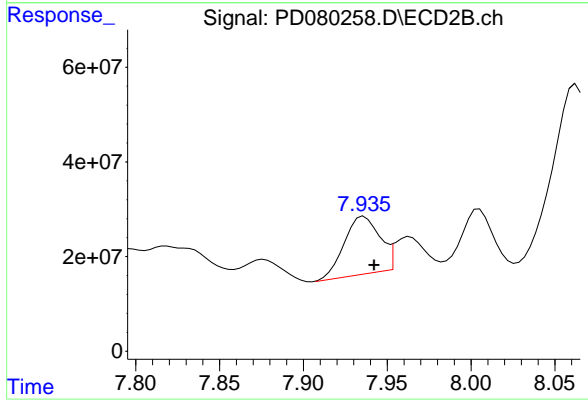


#26 Toxaphene-5
 R.T.: 7.010 min
 Delta R.T.: -0.059 min
 Response: 324213419
 Conc: 9138.14 ng/ml



#27 Decachlorobiphenyl

R.T.: 9.095 min
Delta R.T.: -0.017 min
Response: 383246162
Conc: 238.37 ng/ml



#27 Decachlorobiphenyl

R.T.: 7.936 min
Delta R.T.: -0.006 min
Response: 179181473
Conc: 74.65 ng/ml