

Data Path : Z:\pestpcbsrv\HPCHEM1\ECD_D\Data\PD122223\
 Data File : PD080276.D
 Signal(s) : Signal #1: ECD1A.ch Signal #2: ECD2B.ch
 Acq On : 20 Dec 2023 17:49
 Operator : AR\AJ
 Sample : 05859-06
 Misc :
 ALS Vial : 32 Sample Multiplier: 1

Integration File signal 1: autoint1.e
 Integration File signal 2: autoint2.e
 Quant Time: Dec 20 20:45:48 2023
 Quant Method : Z:\pestpcbsrv\HPCHEM1\ECD_D\Method\PD121623CLP.M
 Quant Title : GC Extractables
 QLast Update : Mon Dec 18 00:44:33 2023
 Response via : Initial Calibration
 Integrator: ChemStation

Volume Inj. : 1 µl
 Signal #1 Phase : ZB-MR2 Signal #2 Phase: ZB-MR2
 Signal #1 Info : 30M x 0.32mm x0.5 Signal #2 Info : 30M x 0.32mm x 0.25µm

Compound	RT#1	RT#2	Resp#1	Resp#2	ng/ml	ng/ml

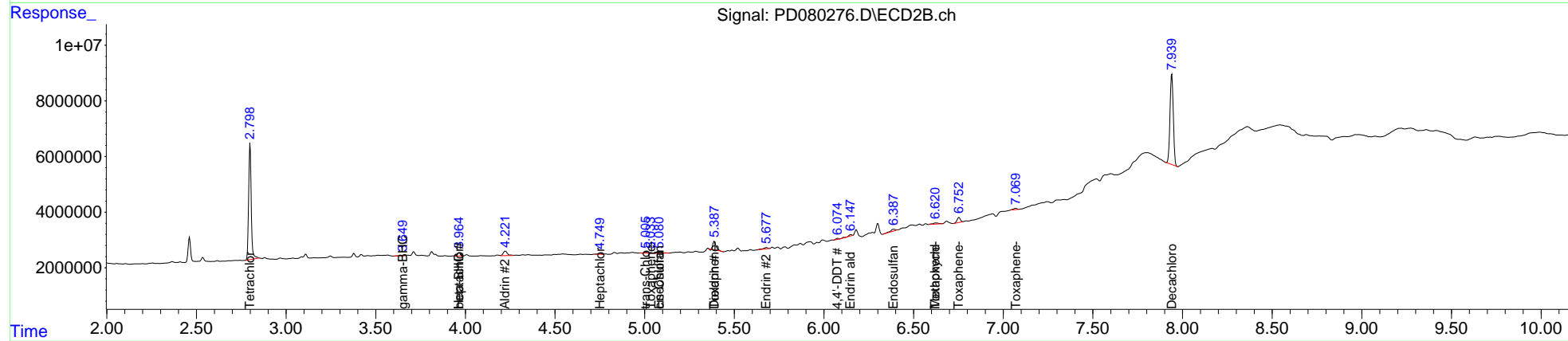
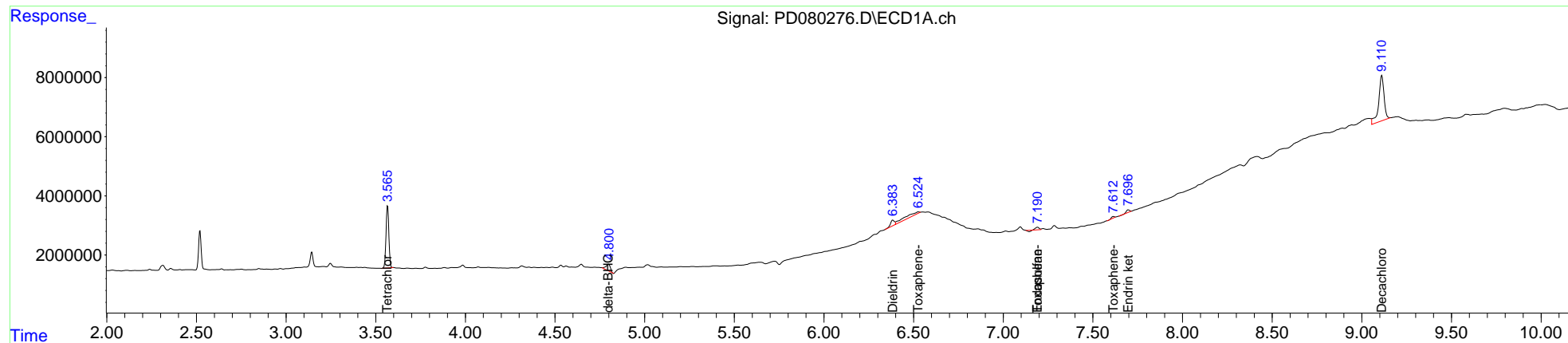
System Monitoring Compounds						
1) SA Tetrachlo...	3.566	2.799	23109599	41965300	18.100	18.873
27) SA Decachlor...	9.111	7.940	32122711	41592474	19.980	17.328
Target Compounds						
3) MA gamma-BHC...	0.000	3.650	0	323169	N.D.	0.100
4) MA Heptachlor	0.000	3.965	0	1345866	N.D.	0.420
5) MB Aldrin	0.000	4.223f	0	2654701	N.D.	0.751
6) B beta-BHC	0.000	3.965f	0	1345866	N.D.	0.784
7) B delta-BHC	4.798	4.180	3978330	318798	1.732	<MDL #
8) B Heptachlo...	0.000	4.750	0	367414	N.D.	0.108
9) A Endosulfan I	0.000	5.081f	0	764218	N.D.	0.279
10) B trans-Chl...	0.000	5.006	0	406719	N.D.	0.124
11) B cis-Chlor...	0.000	5.081	0	764218	N.D.	0.227
12) B 4,4'-DDE	0.000	5.245	0	25153	N.D.	<MDL
13) MA Dieldrin	6.384	5.388	2816709	3488744	1.513	1.164
14) MA Endrin	0.000	5.679	0	845736	N.D.	0.321
17) MA 4,4'-DDT	0.000	6.076	0	409901	N.D.	0.170
18) B Endrin al...	0.000	6.150	0	650295	N.D.	0.282
19) B Endosulfa...	7.191	6.388	851845	1229125	0.464	0.438
20) A Methoxychlor	0.000	6.623	0	944868	N.D.	0.751
21) B Endrin ke...	7.697	0.000	1074398	0	0.552	N.D. #
22) Toxaphene-1	0.000	5.034	0	280424	N.D.	16.448
23) Toxaphene-2	6.526f	5.388	5860984	3488744	328.263	203.431 #
24) Toxaphene-3	0.000	6.623	0	944868	N.D.	15.301
25) Toxaphene-4	7.191	6.753	851845	2290462	21.730	27.193 #
26) Toxaphene-5	7.614	7.070	536111	702344	18.627	19.796

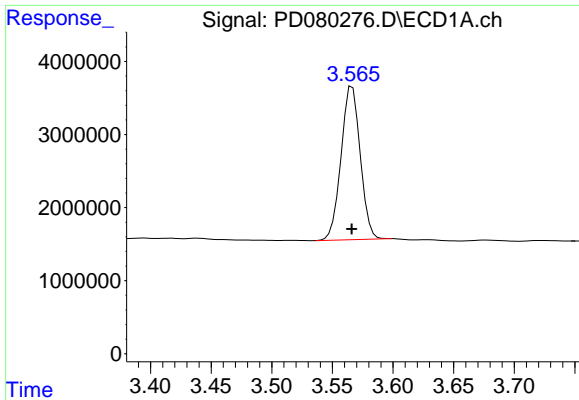
(f)=RT Delta > 1/2 Window (#)=Amounts differ by > 25% (m)=manual int.

Data Path : Z:\pestpcbsrv\HPCHEM1\ECD_D\Data\PD122223\
 Data File : PD080276.D
 Signal(s) : Signal #1: ECD1A.ch Signal #2: ECD2B.ch
 Acq On : 20 Dec 2023 17:49
 Operator : AR\AJ
 Sample : 05859-06
 Misc :
 ALS Vial : 32 Sample Multiplier: 1

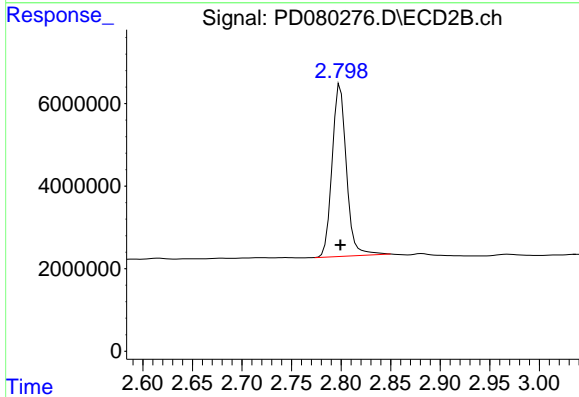
Integration File signal 1: autoint1.e
 Integration File signal 2: autoint2.e
 Quant Time: Dec 20 20:45:48 2023
 Quant Method : Z:\pestpcbsrv\HPCHEM1\ECD_D\Method\PD121623CLP.M
 Quant Title : GC Extractables
 QLast Update : Mon Dec 18 00:44:33 2023
 Response via : Initial Calibration
 Integrator: ChemStation

Volume Inj. : 1 µl
 Signal #1 Phase : ZB-MR1 Signal #2 Phase: ZB-MR2
 Signal #1 Info : 30M x 0.32mm x0.5 Signal #2 Info : 30M x 0.32mm x 0.25µm

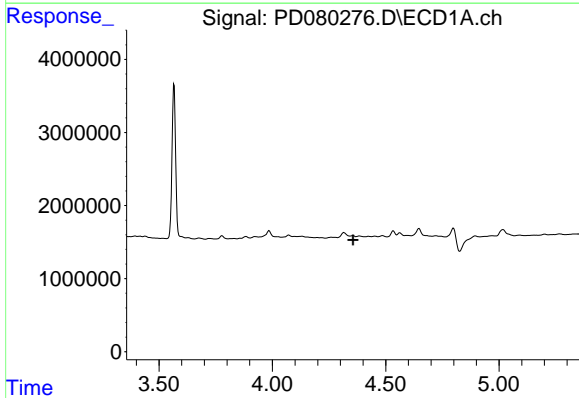




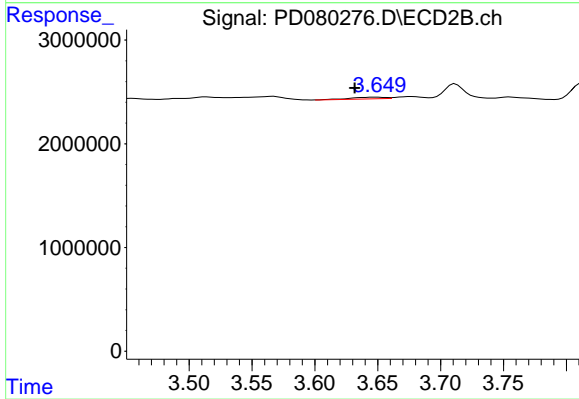
#1 Tetrachloro-m-xylene
 R.T.: 3.566 min
 Delta R.T.: 0.000 min
 Response: 23109599
 Conc: 18.10 ng/ml



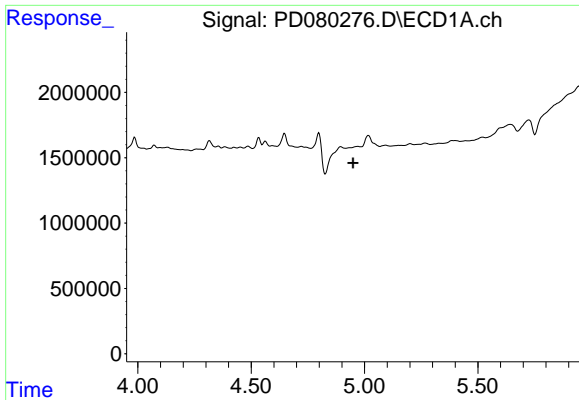
#1 Tetrachloro-m-xylene
 R.T.: 2.799 min
 Delta R.T.: 0.000 min
 Response: 41965300
 Conc: 18.87 ng/ml



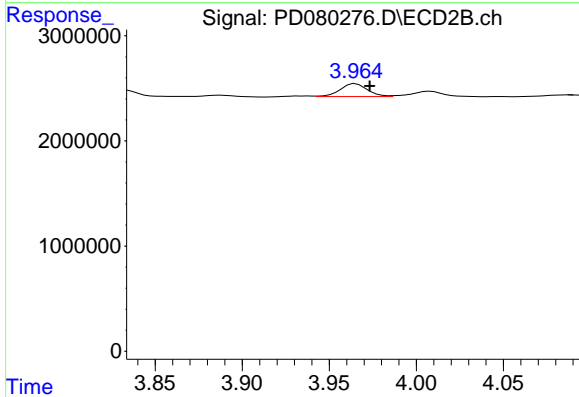
#3 gamma-BHC (Lindane)
 R.T.: 0.000 min
 Exp R.T. : 4.356 min
 Response: 0
 Conc: N.D.



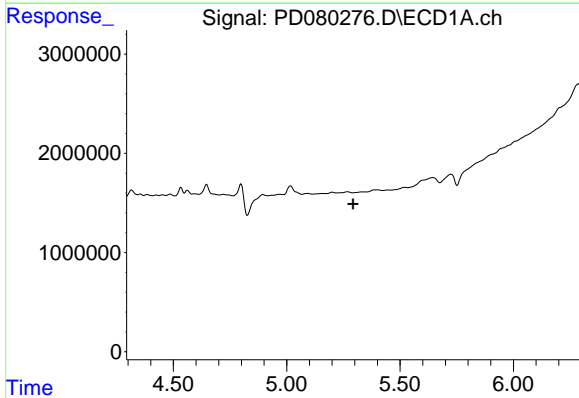
#3 gamma-BHC (Lindane)
 R.T.: 3.650 min
 Delta R.T.: 0.018 min
 Response: 323169
 Conc: 0.10 ng/ml



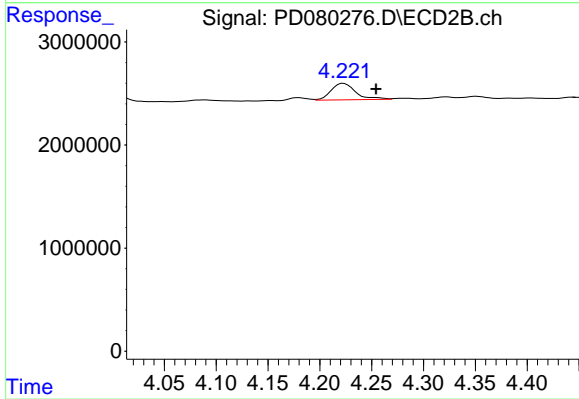
#4 Heptachlor
 R.T.: 0.000 min
 Exp R.T. : 4.949 min
 Response: 0
 Conc: N.D.



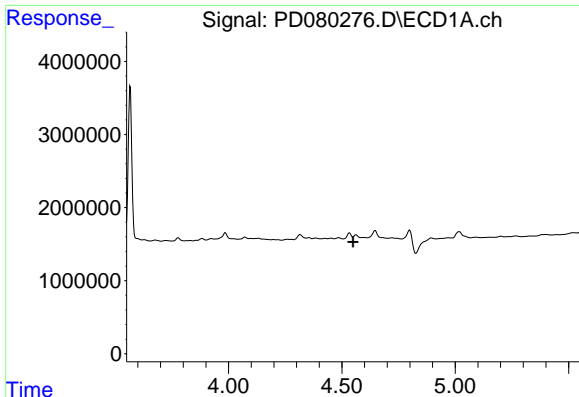
#4 Heptachlor
 R.T.: 3.965 min
 Delta R.T.: -0.008 min
 Response: 1345866
 Conc: 0.42 ng/ml



#5 Aldrin
 R.T.: 0.000 min
 Exp R.T. : 5.292 min
 Response: 0
 Conc: N.D.

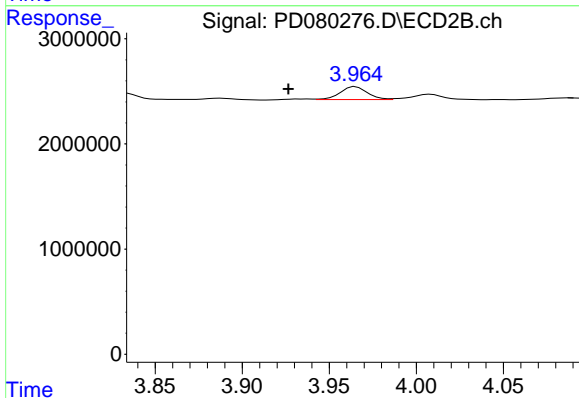


#5 Aldrin
 R.T.: 4.223 min
 Delta R.T.: -0.031 min
 Response: 2654701
 Conc: 0.75 ng/ml



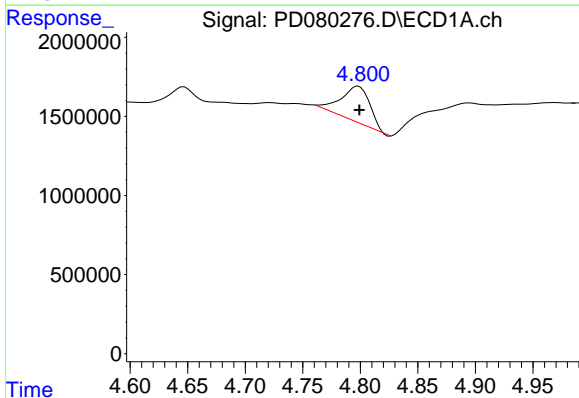
#6 beta-BHC

R.T.: 0.000 min
 Exp R.T. : 4.550 min
 Response: 0
 Conc: N.D.



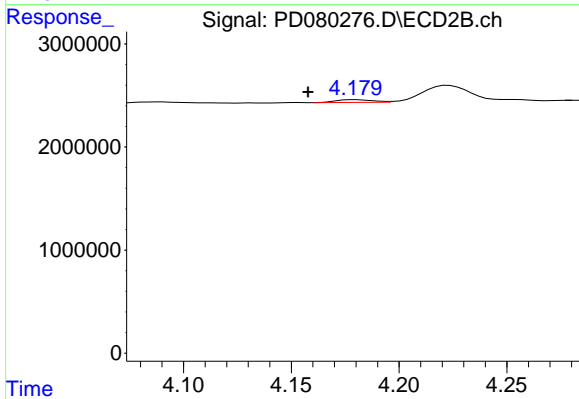
#6 beta-BHC

R.T.: 3.965 min
 Delta R.T.: 0.039 min
 Response: 1345866
 Conc: 0.78 ng/ml



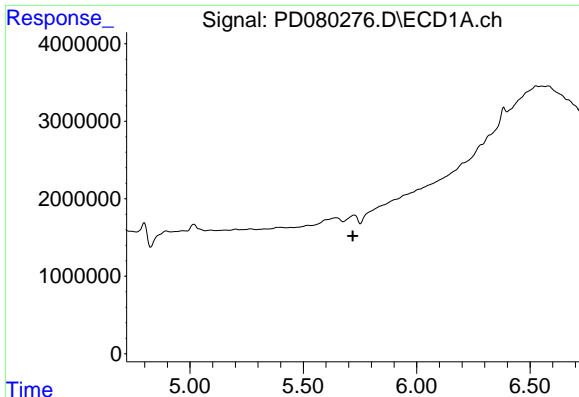
#7 delta-BHC

R.T.: 4.798 min
 Delta R.T.: 0.000 min
 Response: 3978330
 Conc: 1.73 ng/ml

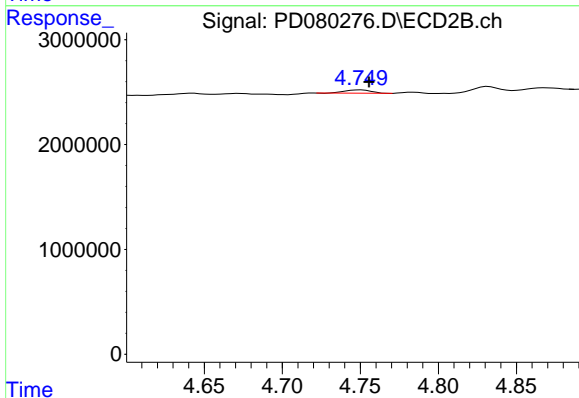


#7 delta-BHC

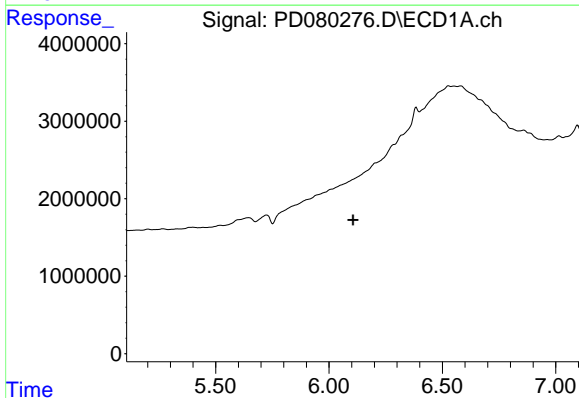
R.T.: 4.180 min
 Delta R.T.: 0.022 min
 Response: 318798
 Conc: N.D.



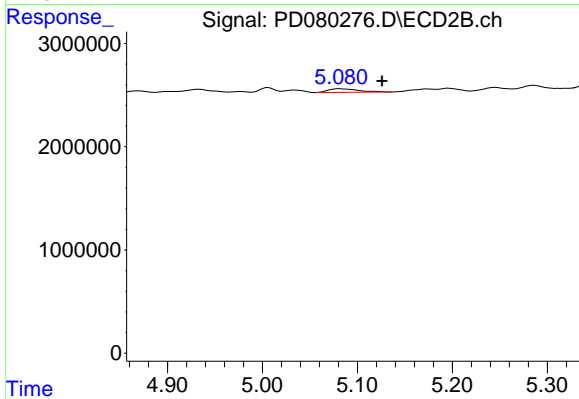
#8 Heptachlor epoxide
 R.T.: 0.000 min
 Exp R.T. : 5.719 min
 Response: 0
 Conc: N.D.



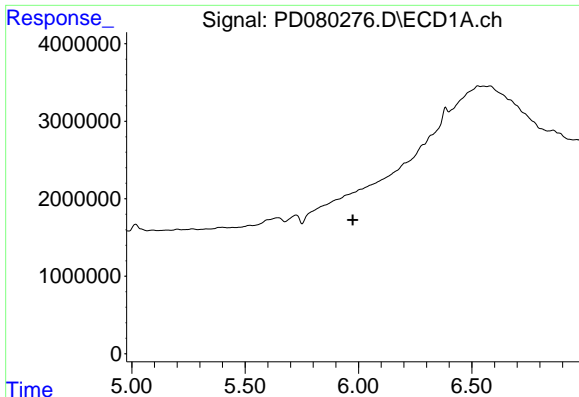
#8 Heptachlor epoxide
 R.T.: 4.750 min
 Delta R.T.: -0.006 min
 Response: 367414
 Conc: 0.11 ng/ml



#9 Endosulfan I
 R.T.: 0.000 min
 Exp R.T. : 6.106 min
 Response: 0
 Conc: N.D.

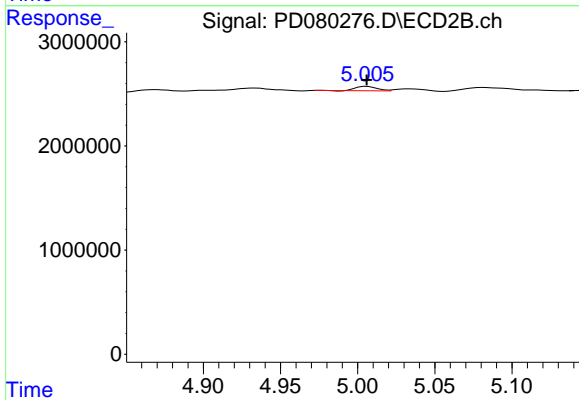


#9 Endosulfan I
 R.T.: 5.081 min
 Delta R.T.: -0.044 min
 Response: 764218
 Conc: 0.28 ng/ml



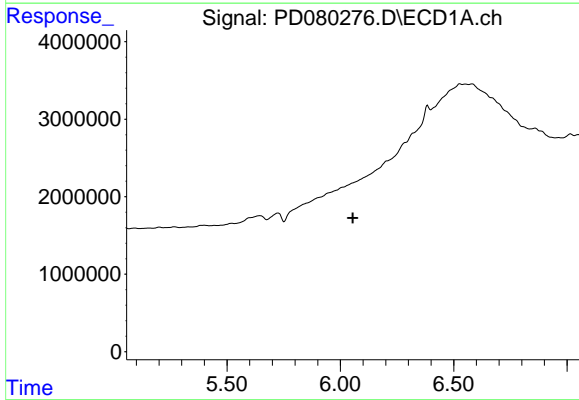
#10 trans-Chlordane

R.T.: 0.000 min
 Exp R.T. : 5.975 min
 Response: 0
 Conc: N.D.



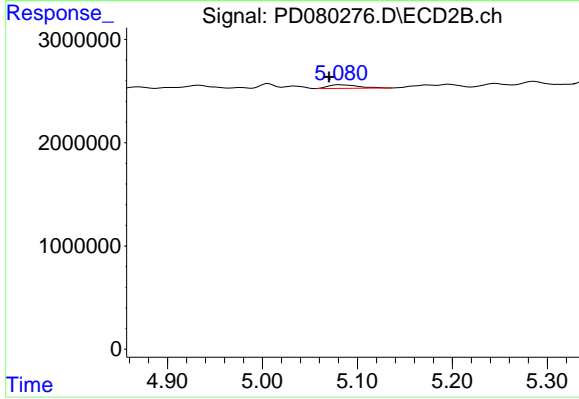
#10 trans-Chlordane

R.T.: 5.006 min
 Delta R.T.: 0.000 min
 Response: 406719
 Conc: 0.12 ng/ml



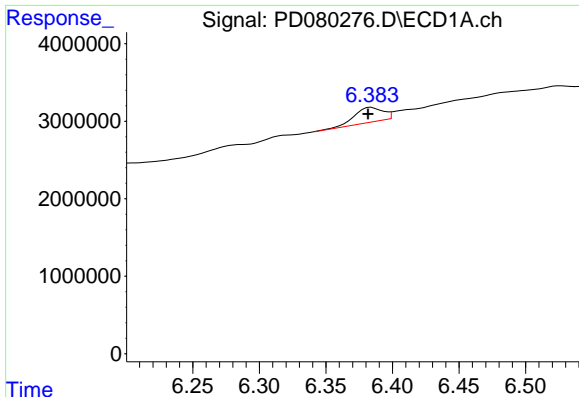
#11 cis-Chlordane

R.T.: 0.000 min
 Exp R.T. : 6.055 min
 Response: 0
 Conc: N.D.



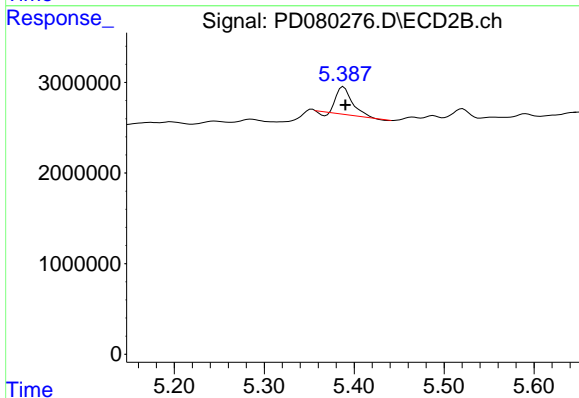
#11 cis-Chlordane

R.T.: 5.081 min
 Delta R.T.: 0.011 min
 Response: 764218
 Conc: 0.23 ng/ml



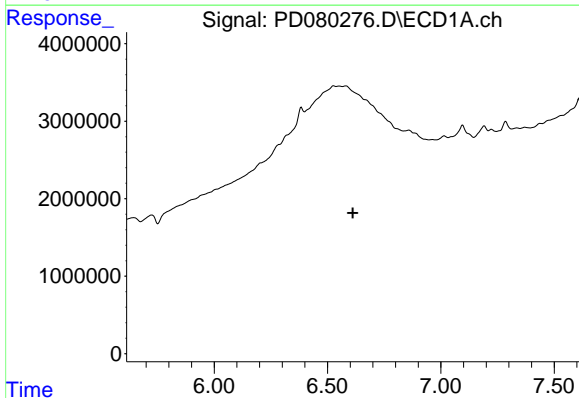
#13 Dieldrin

R.T.: 6.384 min
 Delta R.T.: 0.002 min
 Response: 2816709
 Conc: 1.51 ng/ml



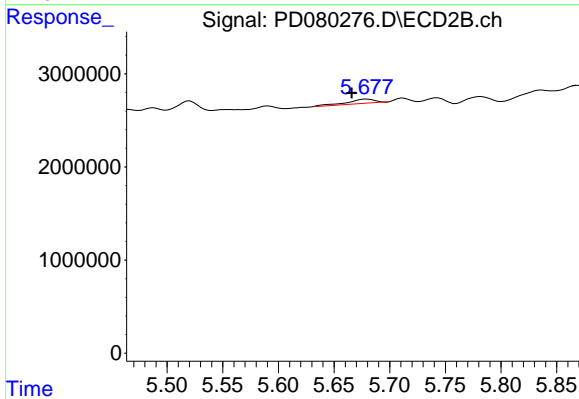
#13 Dieldrin

R.T.: 5.388 min
 Delta R.T.: -0.002 min
 Response: 3488744
 Conc: 1.16 ng/ml



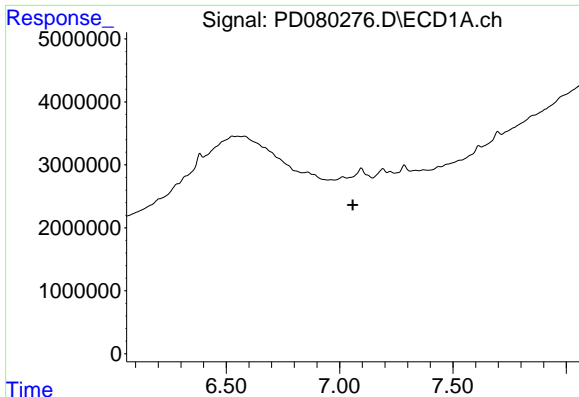
#14 Endrin

R.T.: 0.000 min
 Exp R.T. : 6.612 min
 Response: 0
 Conc: N.D.



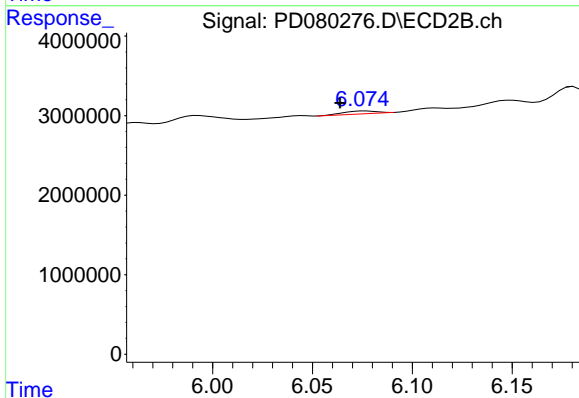
#14 Endrin

R.T.: 5.679 min
 Delta R.T.: 0.013 min
 Response: 845736
 Conc: 0.32 ng/ml



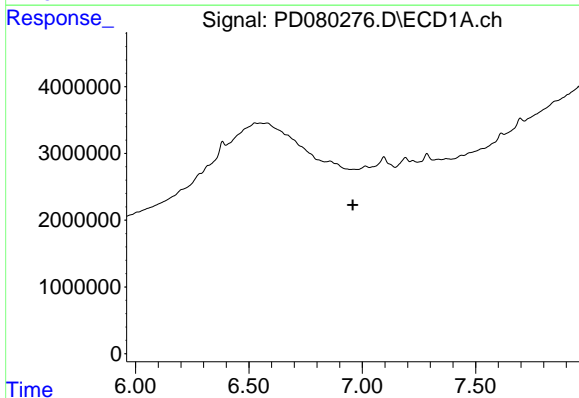
#17 4,4'-DDT

R.T.: 0.000 min
 Exp R.T. : 7.058 min
 Response: 0
 Conc: N.D.



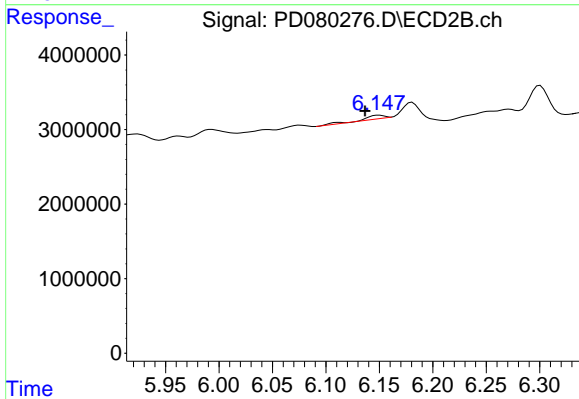
#17 4,4'-DDT

R.T.: 6.076 min
 Delta R.T.: 0.012 min
 Response: 409901
 Conc: 0.17 ng/ml



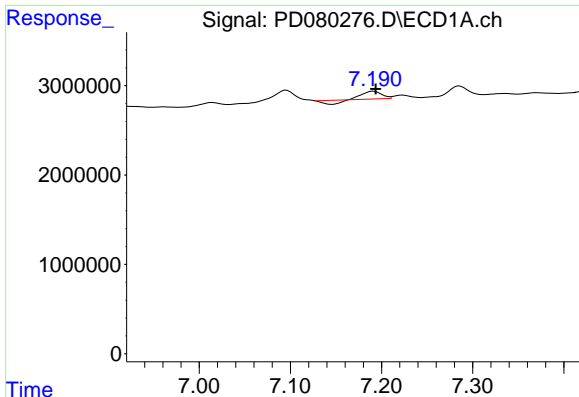
#18 Endrin aldehyde

R.T.: 0.000 min
 Exp R.T. : 6.959 min
 Response: 0
 Conc: N.D.



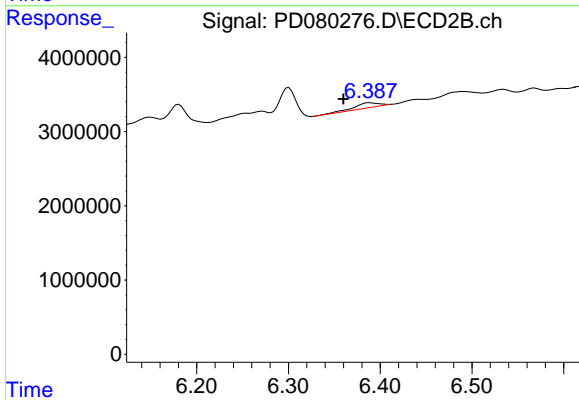
#18 Endrin aldehyde

R.T.: 6.150 min
 Delta R.T.: 0.013 min
 Response: 650295
 Conc: 0.28 ng/ml



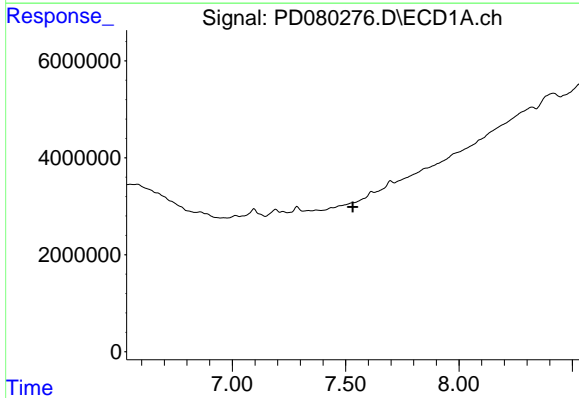
#19 Endosulfan Sulfate

R.T.: 7.191 min
 Delta R.T.: -0.003 min
 Response: 851845
 Conc: 0.46 ng/ml



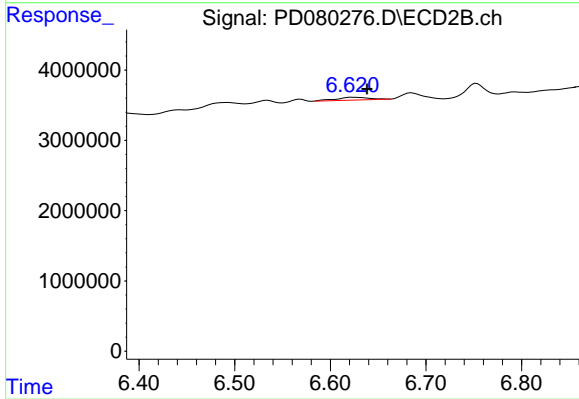
#19 Endosulfan Sulfate

R.T.: 6.388 min
 Delta R.T.: 0.029 min
 Response: 1229125
 Conc: 0.44 ng/ml



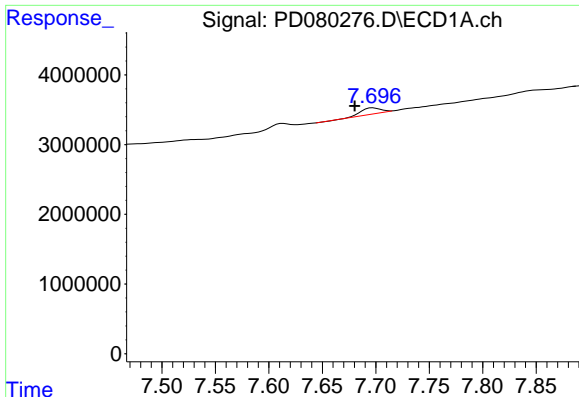
#20 Methoxychlor

R.T.: 0.000 min
 Exp R.T. : 7.531 min
 Response: 0
 Conc: N.D.



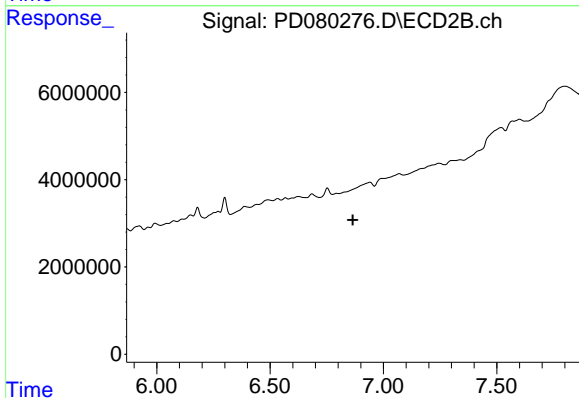
#20 Methoxychlor

R.T.: 6.623 min
 Delta R.T.: -0.015 min
 Response: 944868
 Conc: 0.75 ng/ml



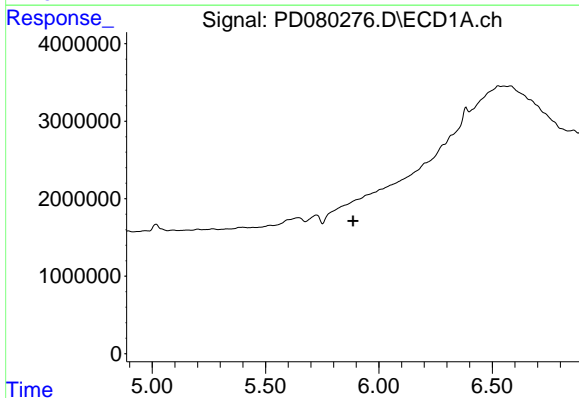
#21 Endrin ketone

R.T.: 7.697 min
 Delta R.T.: 0.017 min
 Response: 1074398
 Conc: 0.55 ng/ml



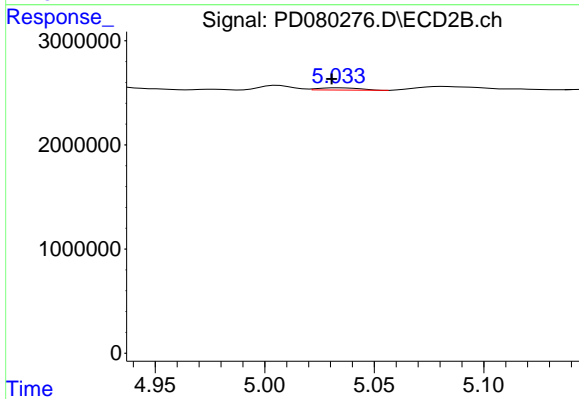
#21 Endrin ketone

R.T.: 0.000 min
 Exp R.T. : 6.865 min
 Response: 0
 Conc: N.D.



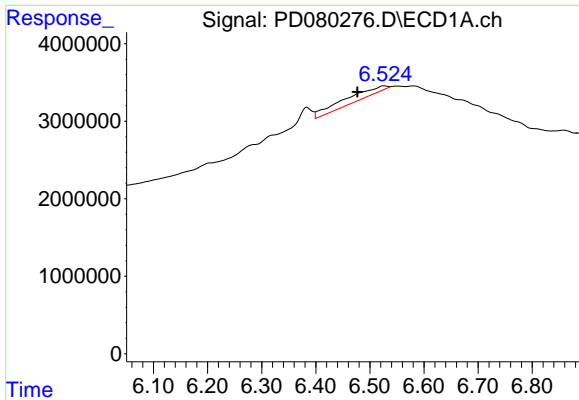
#22 Toxaphene-1

R.T.: 0.000 min
 Exp R.T. : 5.886 min
 Response: 0
 Conc: N.D.

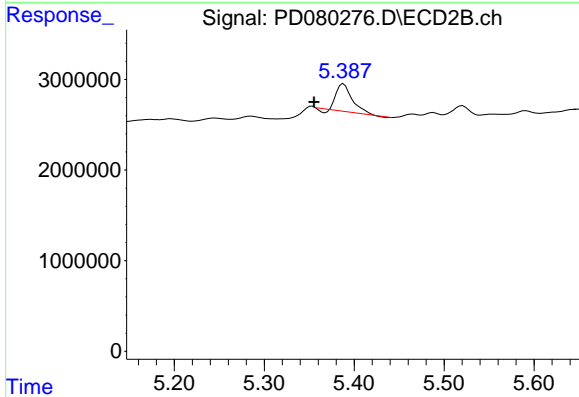


#22 Toxaphene-1

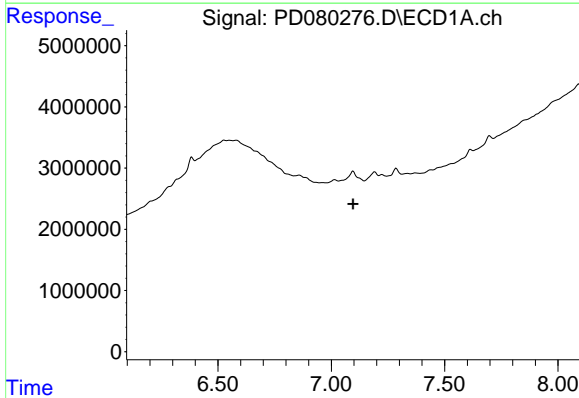
R.T.: 5.034 min
 Delta R.T.: 0.003 min
 Response: 280424
 Conc: 16.45 ng/ml



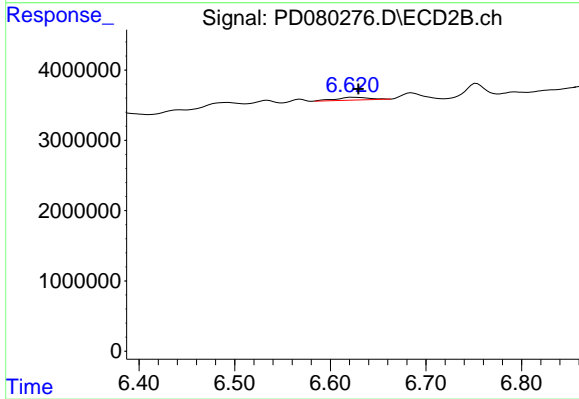
#23 Toxaphene-2
 R.T.: 6.526 min
 Delta R.T.: 0.050 min
 Response: 5860984
 Conc: 328.26 ng/ml



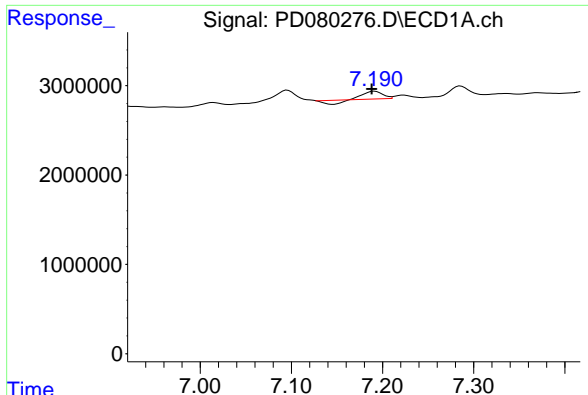
#23 Toxaphene-2
 R.T.: 5.388 min
 Delta R.T.: 0.033 min
 Response: 3488744
 Conc: 203.43 ng/ml



#24 Toxaphene-3
 R.T.: 0.000 min
 Exp R.T.: 7.096 min
 Response: 0
 Conc: N.D.

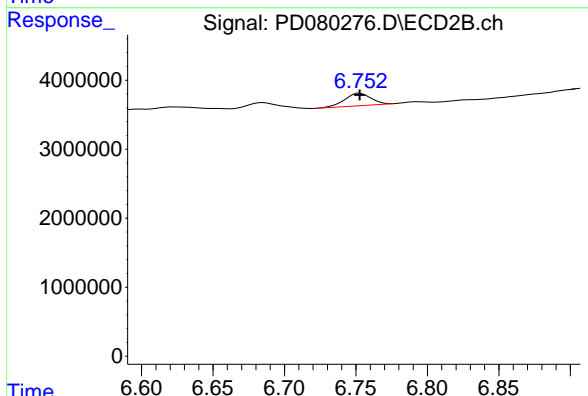


#24 Toxaphene-3
 R.T.: 6.623 min
 Delta R.T.: -0.006 min
 Response: 944868
 Conc: 15.30 ng/ml



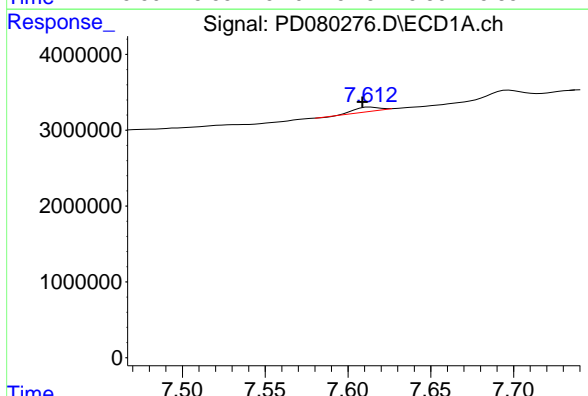
#25 Toxaphene-4

R.T.: 7.191 min
 Delta R.T.: 0.003 min
 Response: 851845
 Conc: 21.73 ng/ml



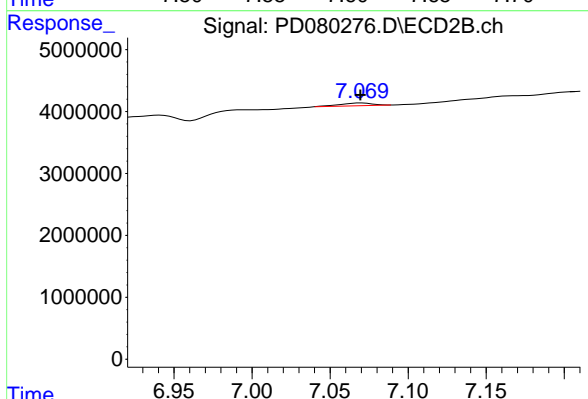
#25 Toxaphene-4

R.T.: 6.753 min
 Delta R.T.: 0.000 min
 Response: 2290462
 Conc: 27.19 ng/ml



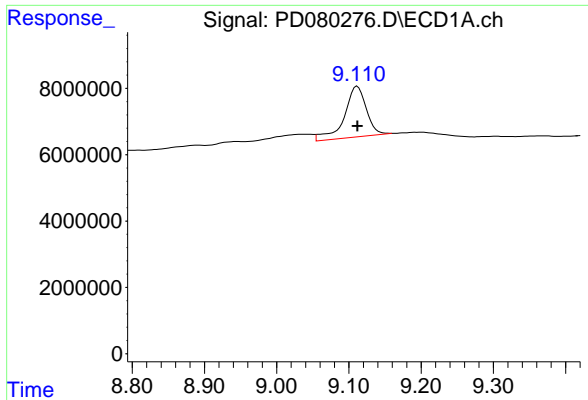
#26 Toxaphene-5

R.T.: 7.614 min
 Delta R.T.: 0.005 min
 Response: 536111
 Conc: 18.63 ng/ml



#26 Toxaphene-5

R.T.: 7.070 min
 Delta R.T.: 0.000 min
 Response: 702344
 Conc: 19.80 ng/ml



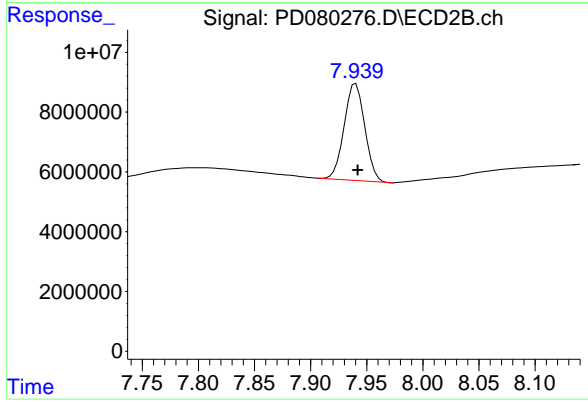
#27 Decachlorobiphenyl

R.T.: 9.111 min

Delta R.T.: 0.000 min

Response: 32122711

Conc: 19.98 ng/ml



#27 Decachlorobiphenyl

R.T.: 7.940 min

Delta R.T.: -0.002 min

Response: 41592474

Conc: 17.33 ng/ml