

Data Path : Z:\pestpcbsrv\HPCHEM1\ECD\_D\Data\PD122223\  
 Data File : PD080273.D  
 Signal(s) : Signal #1: ECD1A.ch Signal #2: ECD2B.ch  
 Acq On : 20 Dec 2023 17:09  
 Operator : AR\AJ  
 Sample : 05859-01  
 Misc :  
 ALS Vial : 29 Sample Multiplier: 1

**Instrument :**

ECD\_D

**ClientSampleId :**

BGRD0

**Manual Integrations**

**APPROVED**

Reviewed By :Abdul Mirza 12/22/2023  
 Supervised By :Ankita Jodhani 12/22/2023

Integration File signal 1: autoint1.e  
 Integration File signal 2: autoint2.e  
 Quant Time: Dec 22 02:58:26 2023  
 Quant Method : Z:\pestpcbsrv\HPCHEM1\ECD\_D\Method\PD121623CLP.M  
 Quant Title : GC Extractables  
 QLast Update : Thu Dec 21 13:52:23 2023  
 Response via : Initial Calibration  
 Integrator: ChemStation

Volume Inj. : 1 µl  
 Signal #1 Phase : ZB-MR1 Signal #2 Phase: ZB-MR2  
 Signal #1 Info : 30M x 0.32mm x0.5 Signal #2 Info : 30M x 0.32mm x 0.25µm

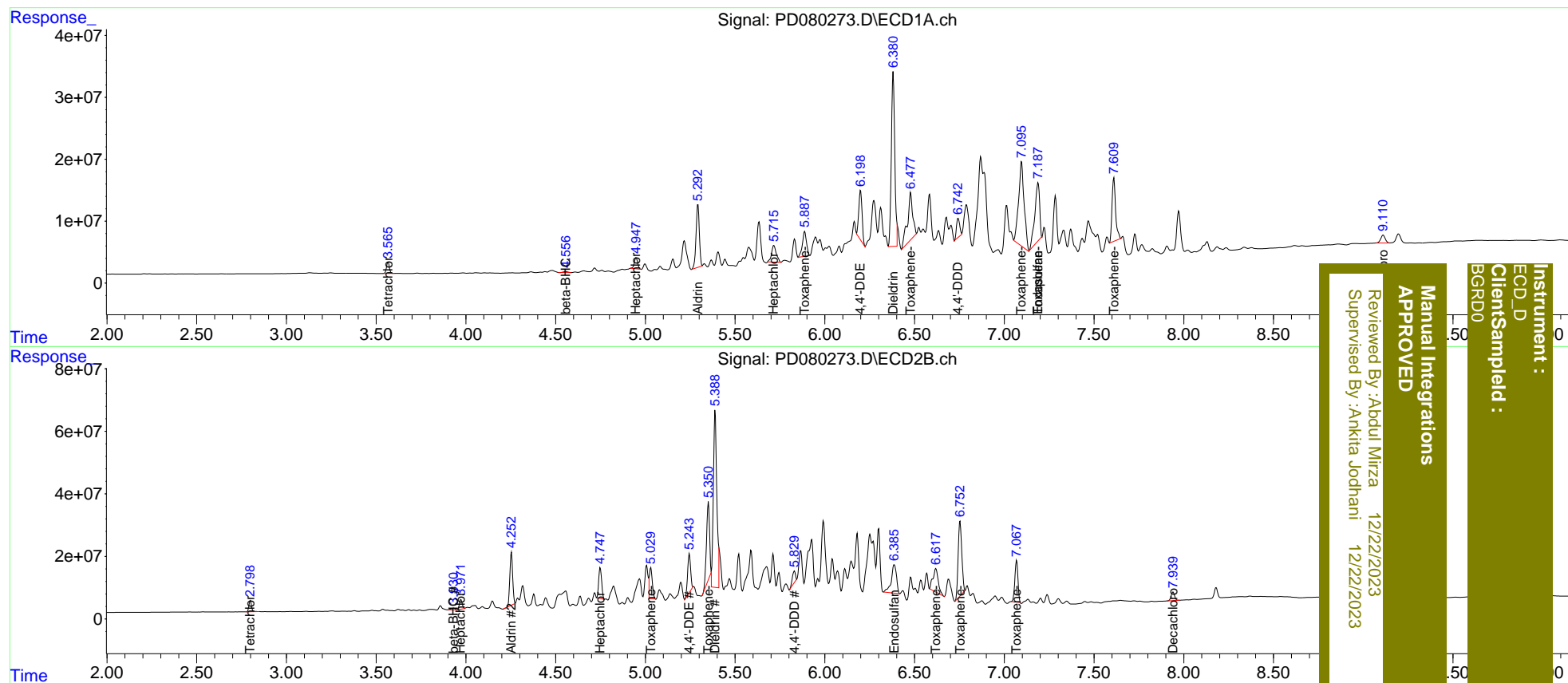
Compound	RT#1	RT#2	Resp#1	Resp#2	ng/ml	ng/ml
-----						
System Monitoring Compounds						
1) SA Tetrachlo...	3.567	2.799	20082659	36361118	15.729	16.353
27) SA Decachlor...	9.110	7.941	21996436	36542813	13.681m	15.225
Target Compounds						
4) MA Heptachlor	4.949	3.973	23314092	33693864	11.164	10.522
5) MB Aldrin	5.292	4.254	129.8E6	182.7E6	58.042m	51.716
6) B beta-BHC	4.557	3.932	2575963	7649745	2.482	4.455 #
8) B Heptachlo...	5.716	4.747	49479155	112.4E6	23.033	33.151m#
12) B 4,4'-DDE	6.198	5.243	102.4E6	143.9E6	53.021m	45.828m
13) MA Dieldrin	6.380	5.388	371.6E6	746.8E6	199.689m	249.197m
16) A 4,4'-DDD	6.742	5.829	38888005	45703168	28.036m	19.877m#
19) B Endosulfa...	7.187	6.387	179.1E6	183.4E6	97.643m	65.378 #
22) Toxaphene-1	5.888	5.029	63861271	111.0E6	10305.699	6508.524m#
23) Toxaphene-2	6.477	5.350	155.8E6	298.1E6	8725.981m	17382.372m#
24) Toxaphene-3	7.095	6.619	293.8E6	155.2E6	5633.622m	2513.916 #
25) Toxaphene-4	7.187	6.753	176.2E6	333.7E6	4495.224m	3961.863
26) Toxaphene-5	7.609	7.069	142.5E6	158.5E6	4952.483m	4466.556
-----						

(f)=RT Delta > 1/2 Window (#)=Amounts differ by > 25% (m)=manual int.

Data Path : Z:\pestpcbsrv\HPCHEM1\ECD\_D\Data\PD122223\  
 Data File : PD080273.D  
 Signal(s) : Signal #1: ECD1A.ch Signal #2: ECD2B.ch  
 Acq On : 20 Dec 2023 17:09  
 Operator : AR\AJ  
 Sample : 05859-01  
 Misc :  
 ALS Vial : 29 Sample Multiplier: 1

Integration File signal 1: autoint1.e  
 Integration File signal 2: autoint2.e  
 Quant Time: Dec 22 02:58:26 2023  
 Quant Method : Z:\pestpcbsrv\HPCHEM1\ECD\_D\Method\PD121623CLP.M  
 Quant Title : GC Extractables  
 QLast Update : Thu Dec 21 13:52:23 2023  
 Response via : Initial Calibration  
 Integrator: ChemStation

Volume Inj. : 1 µl  
 Signal #1 Phase : ZB-MR1 Signal #2 Phase: ZB-MR2  
 Signal #1 Info : 30M x 0.32mm x0.5 Signal #2 Info : 30M x 0.32mm x 0.25µm



Instrument : ECD\_D  
 ClientSampled : BGRDO  
 Manual Integrations APPROVED  
 Reviewed By :Abdul Mirza 12/22/2023  
 Supervised By :Ankita Jodhani 12/22/2023