

Data Path : Z:\pestpcbsrv\HPCHEM1\ECD_D\Data\PD122224\
 Data File : PD087280.D
 Signal(s) : Signal #1: ECD1A.ch Signal #2: ECD2B.ch
 Acq On : 20 Dec 2024 23:38
 Operator : AR\AJ
 Sample : P5228-14
 Misc :
 ALS Vial : 28 Sample Multiplier: 1

Instrument :
 ECD_D
 ClientSampleId :

Integration File signal 1: autoint1.e
 Integration File signal 2: autoint2.e
 Quant Time: Dec 21 02:49:40 2024
 Quant Method : Z:\pestpcbsrv\HPCHEM1\ECD_D\Method\PD122024CLP.M
 Quant Title : GC Extractables
 QLast Update : Fri Dec 20 23:32:53 2024
 Response via : Initial Calibration
 Integrator: ChemStation

Volume Inj. : 1 µl
 Signal #1 Phase : ZB-MR2 Signal #2 Phase: ZB-MR2
 Signal #1 Info : 30M x 0.32mm x0.5 Signal #2 Info : 30M x 0.32mm x 0.25µm

	Compound	RT#1	RT#2	Resp#1	Resp#2	ng/ml	ng/ml

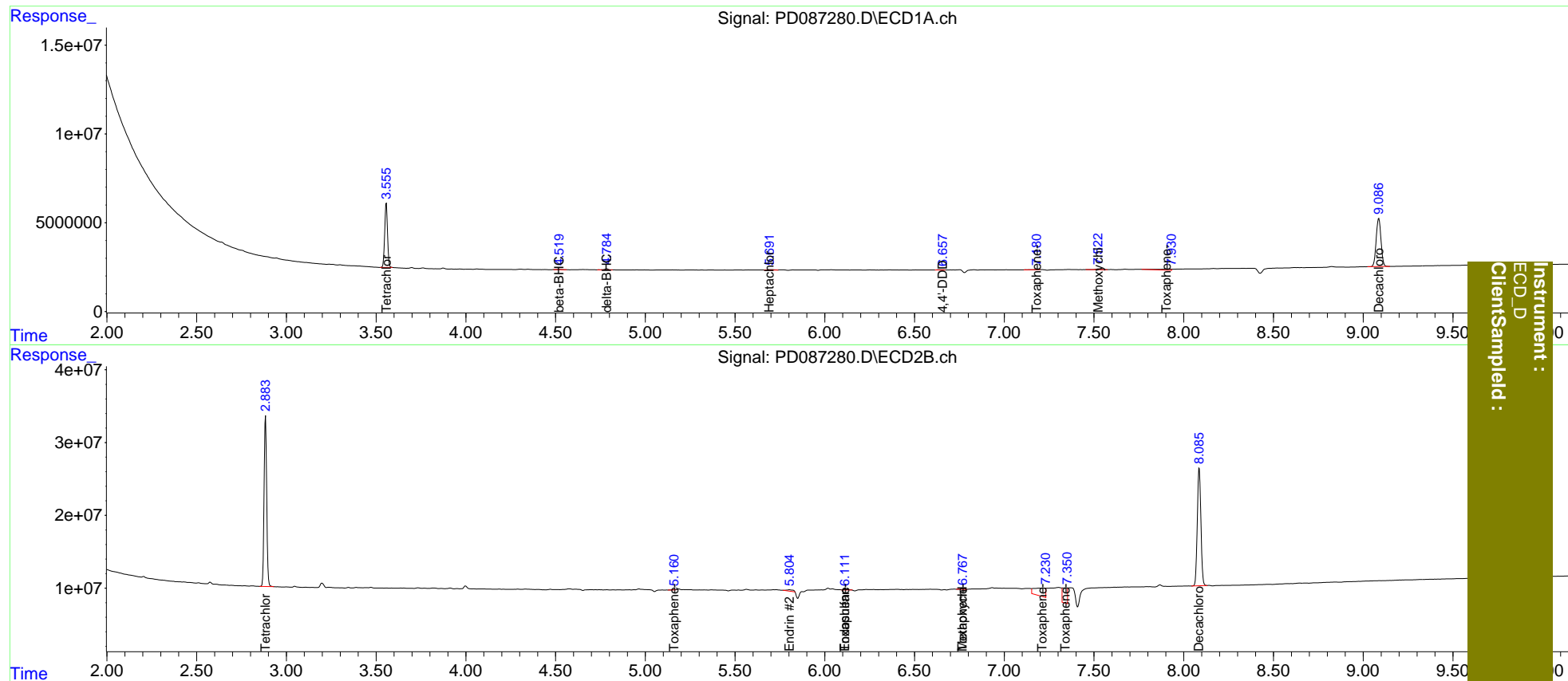
System Monitoring Compounds							
1)	SA Tetrachlo...	3.557	2.884	39953137	237.5E6	19.514	20.406
2)	SA Decachlor...	9.087	8.086	50722181	225.7E6	16.607	17.133
Target Compounds							
2)	A alpha-BHC	4.016	3.390	-105930	824866	N.D.	<MDL
3)	MA gamma-BHC...	4.347	3.734	-71976	745441	N.D.	<MDL
4)	MA Heptachlor	4.954	0.000	99163	0	<MDL	N.D. #
6)	B beta-BHC	4.520	0.000	261686	0	0.150	N.D. #
7)	B delta-BHC	4.785	4.291f	828779	392457	0.208	<MDL #
8)	B Heptachlo...	5.696	4.911	783386	359995	0.217	<MDL #
9)	A Endosulfan I	0.000	5.187f	0	1359473	N.D.	<MDL
10)	B trans-Chl...	0.000	5.162	0	319365	N.D.	<MDL
11)	B cis-Chlor...	0.000	5.187	0	1359473	N.D.	<MDL
12)	B 4,4'-DDE	0.000	5.369	0	170687	N.D.	<MDL
13)	MA Dieldrin	6.360	5.519	118693	225661	<MDL	<MDL #
14)	MA Endrin	0.000	5.804	0	4977290	N.D.	0.356
16)	A 4,4'-DDD	6.656f	5.952	319835	72226	0.123	<MDL #
18)	B Endrin al...	6.929	6.272	59446	554496	<MDL	<MDL #
19)	B Endosulfa...	7.182	0.000	136848	0	<MDL	N.D. #
20)	A Methoxychlor	7.523	6.768	895790	624729	0.602	0.107 #
21)	B Endrin ke...	7.595f	6.933f	191710	709145	<MDL	<MDL #
22)	Toxaphene-1	0.000	5.162	0	319365	N.D.	3.956
23)	Toxaphene-2	6.507f	6.113	-86440	1377350	N.D.	15.565
24)	Toxaphene-3	0.000	6.768	0	624729	N.D.	2.191
25)	Toxaphene-4	7.182	7.213	136848	47023446	2.118	235.158 #
26)	Toxaphene-5	7.907	7.342	3072295	37497351	65.645	252.439 #

(f)=RT Delta > 1/2 Window (#)=Amounts differ by > 25% (m)=manual int.

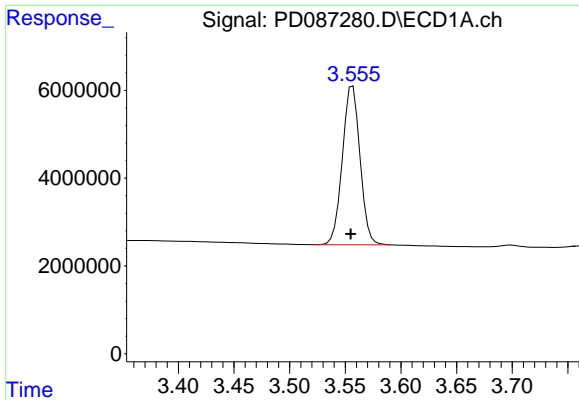
Data Path : Z:\pestpcbsrv\HPCHEM1\ECD_D\Data\PD122224\
 Data File : PD087280.D
 Signal(s) : Signal #1: ECD1A.ch Signal #2: ECD2B.ch
 Acq On : 20 Dec 2024 23:38
 Operator : AR\AJ
 Sample : P5228-14
 Misc :
 ALS Vial : 28 Sample Multiplier: 1

Integration File signal 1: autoint1.e
 Integration File signal 2: autoint2.e
 Quant Time: Dec 21 02:49:40 2024
 Quant Method : Z:\pestpcbsrv\HPCHEM1\ECD_D\Method\PD122024CLP.M
 Quant Title : GC Extractables
 QLast Update : Fri Dec 20 23:32:53 2024
 Response via : Initial Calibration
 Integrator: ChemStation

Volume Inj. : 1 µl
 Signal #1 Phase : ZB-MR1 Signal #2 Phase: ZB-MR2
 Signal #1 Info : 30M x 0.32mm x0.5 Signal #2 Info : 30M x 0.32mm x 0.25µm

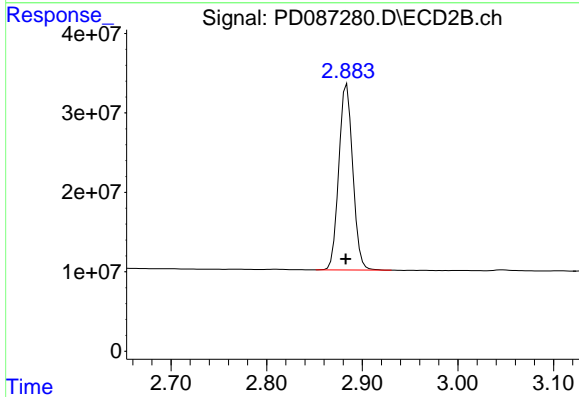


Instrument : ECD_D
 Client Sampled :

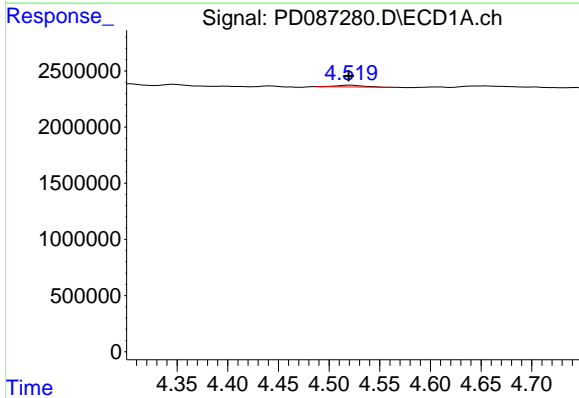


#1 Tetrachloro-m-xylene
 R.T.: 3.557 min
 Delta R.T.: 0.002 min
 Response: 39953137
 Conc: 19.51 ng/ml

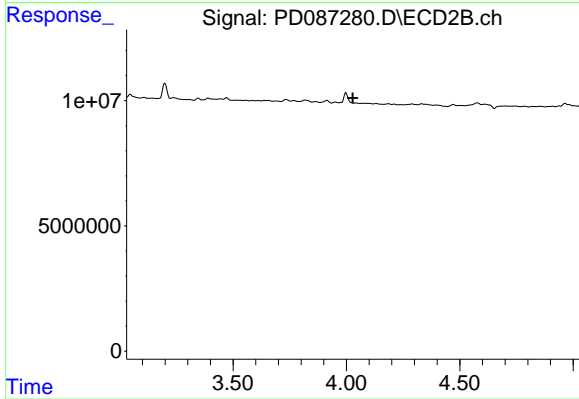
Instrument :
 ECD_D
 ClientSampleId :



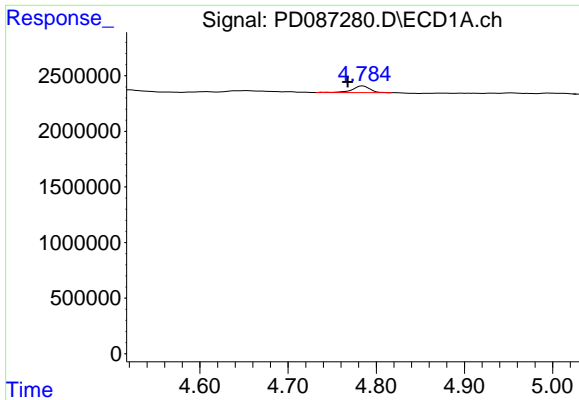
#1 Tetrachloro-m-xylene
 R.T.: 2.884 min
 Delta R.T.: 0.001 min
 Response: 237461015
 Conc: 20.41 ng/ml



#6 beta-BHC
 R.T.: 4.520 min
 Delta R.T.: 0.000 min
 Response: 261686
 Conc: 0.15 ng/ml



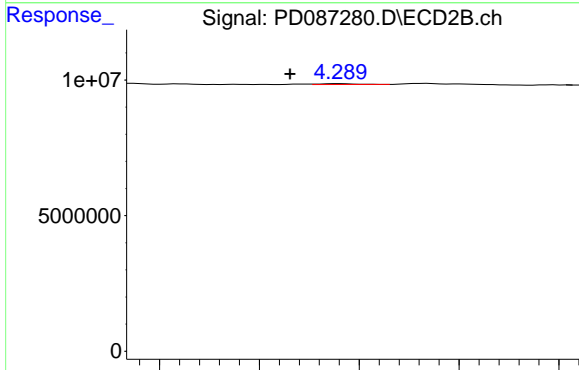
#6 beta-BHC
 R.T.: 0.000 min
 Exp R.T. : 4.028 min
 Response: 0
 Conc: N.D.



#7 delta-BHC

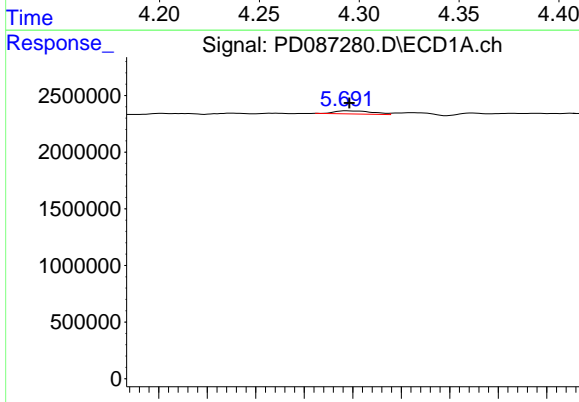
R.T.: 4.785 min
 Delta R.T.: 0.017 min
 Response: 828779
 Conc: 0.21 ng/ml

Instrument :
 ECD_D
 ClientSampleId :



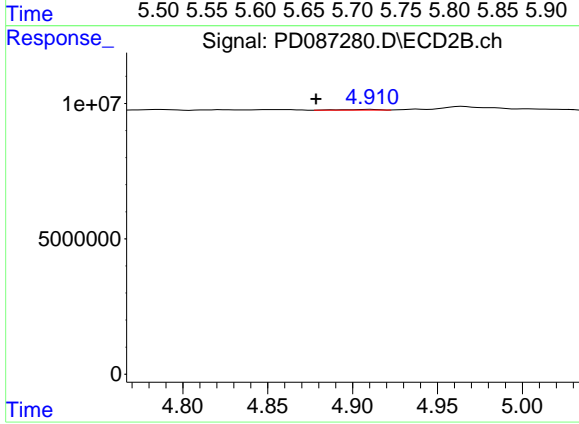
#7 delta-BHC

R.T.: 4.291 min
 Delta R.T.: 0.025 min
 Response: 392457
 Conc: N.D.



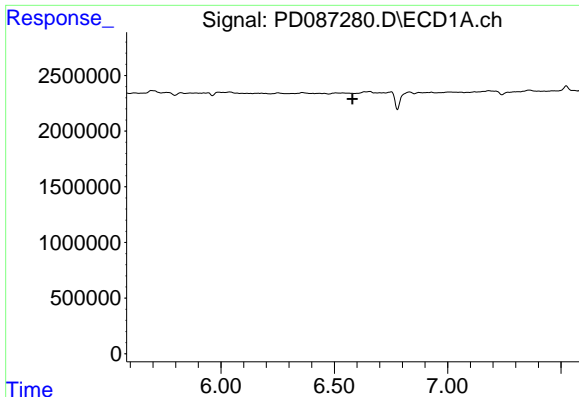
#8 Heptachlor epoxide

R.T.: 5.696 min
 Delta R.T.: 0.000 min
 Response: 783386
 Conc: 0.22 ng/ml



#8 Heptachlor epoxide

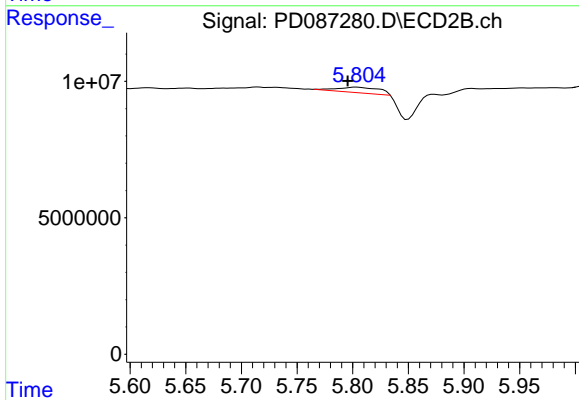
R.T.: 4.911 min
 Delta R.T.: 0.033 min
 Response: 359995
 Conc: N.D.



#14 Endrin

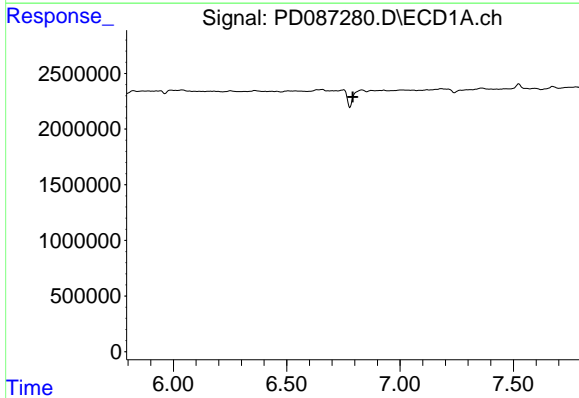
R.T.: 0.000 min
 Exp R.T.: 6.581 min
 Response: 0
 Conc: N.D.

Instrument :
 ECD_D
 ClientSampleId :



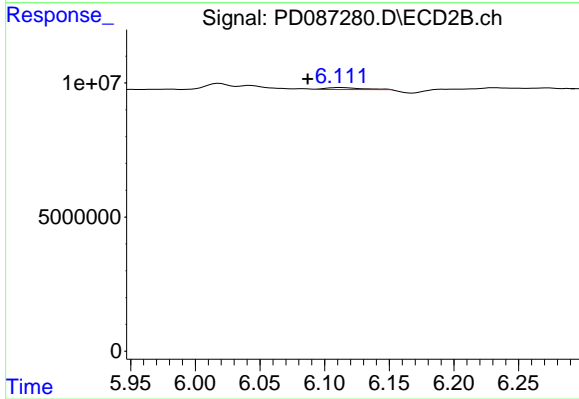
#14 Endrin

R.T.: 5.804 min
 Delta R.T.: 0.008 min
 Response: 4977290
 Conc: 0.36 ng/ml



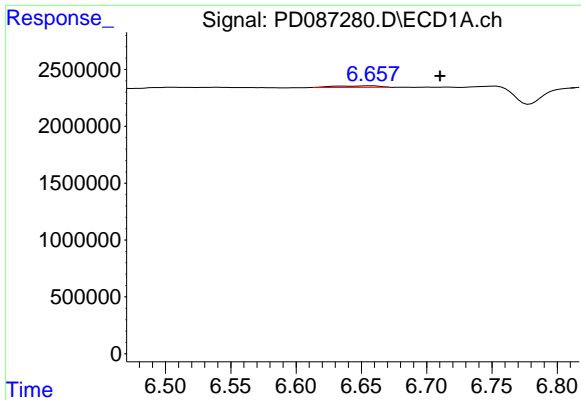
#15 Endosulfan II

R.T.: 6.832 min
 Delta R.T.: 0.040 min
 Response: -2239058
 Conc: N.D.



#15 Endosulfan II

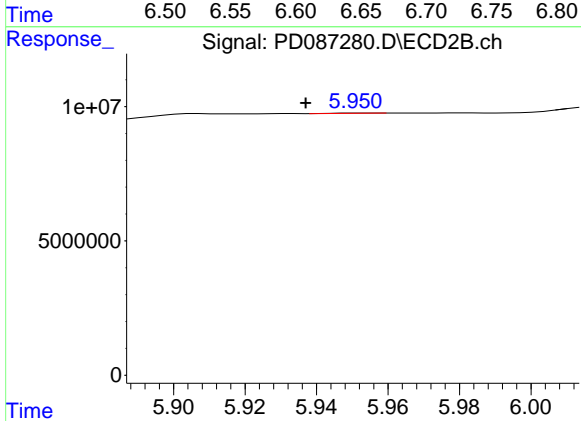
R.T.: 6.113 min
 Delta R.T.: 0.026 min
 Response: 1377350
 Conc: 0.10 ng/ml



#16 4,4'-DDD

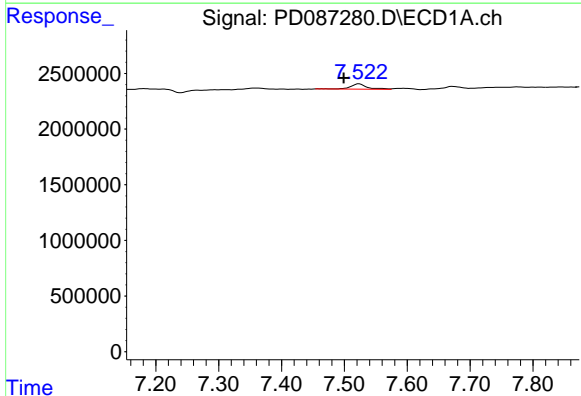
R.T.: 6.656 min
 Delta R.T.: -0.055 min
 Response: 319835
 Conc: 0.12 ng/ml

Instrument :
 ECD_D
 ClientSampleId :



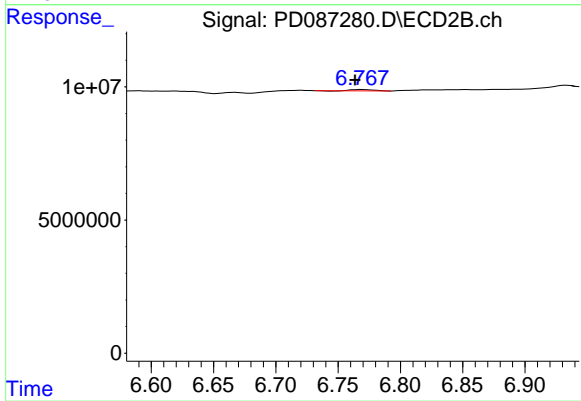
#16 4,4'-DDD

R.T.: 5.952 min
 Delta R.T.: 0.015 min
 Response: 72226
 Conc: N.D.



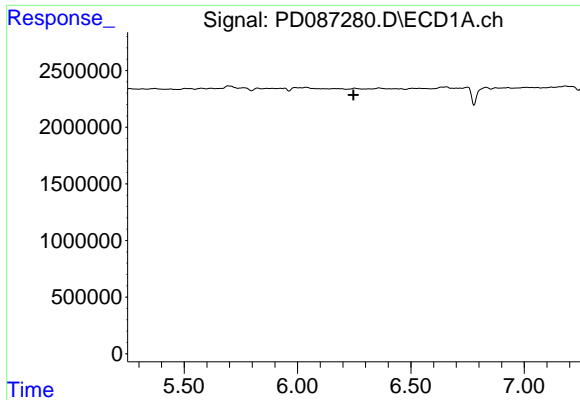
#20 Methoxychlor

R.T.: 7.523 min
 Delta R.T.: 0.024 min
 Response: 895790
 Conc: 0.60 ng/ml



#20 Methoxychlor

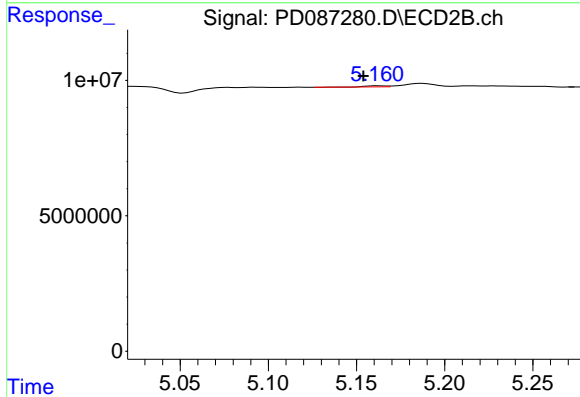
R.T.: 6.768 min
 Delta R.T.: 0.005 min
 Response: 624729
 Conc: 0.11 ng/ml



#22 Toxaphene-1

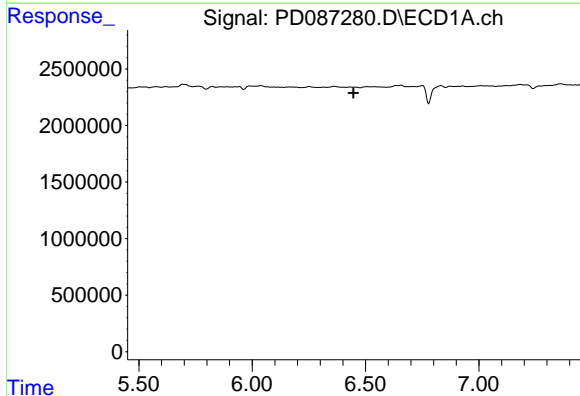
R.T.: 0.000 min
 Exp R.T.: 6.247 min
 Response: 0
 Conc: N.D.

Instrument :
 ECD_D
 ClientSampleId :



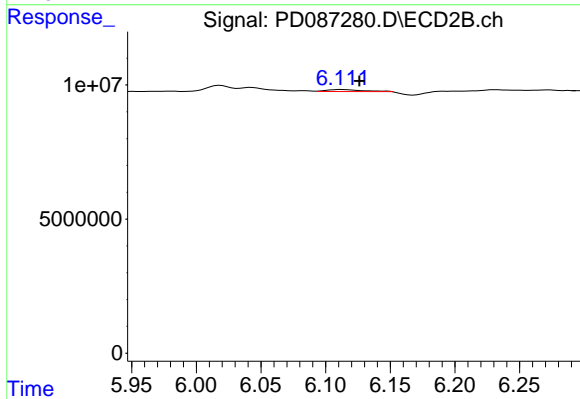
#22 Toxaphene-1

R.T.: 5.162 min
 Delta R.T.: 0.008 min
 Response: 319365
 Conc: 3.96 ng/ml



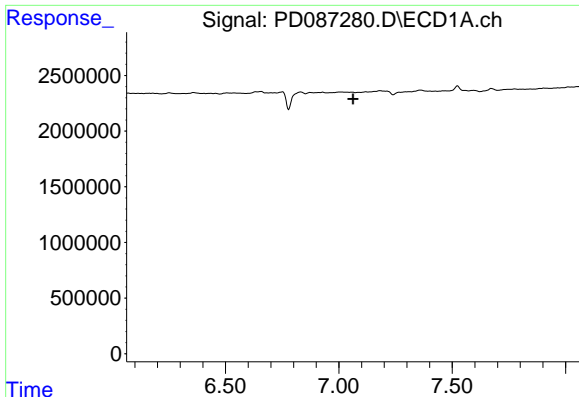
#23 Toxaphene-2

R.T.: 6.507 min
 Delta R.T.: 0.060 min
 Response: -86440
 Conc: N.D.



#23 Toxaphene-2

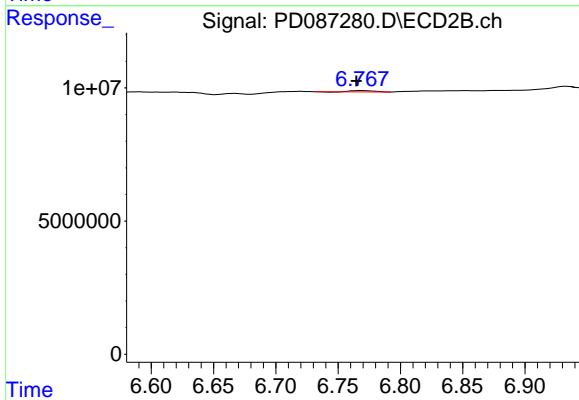
R.T.: 6.113 min
 Delta R.T.: -0.013 min
 Response: 1377350
 Conc: 15.56 ng/ml



#24 Toxaphene-3

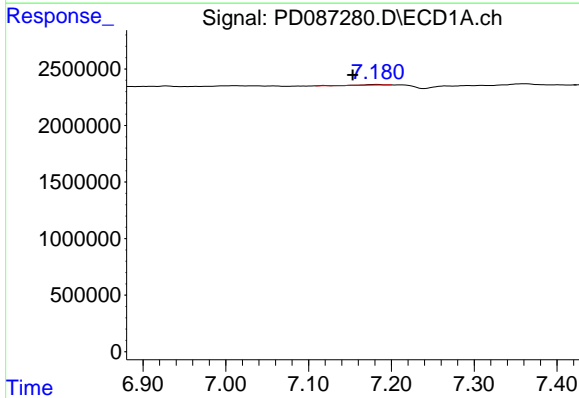
R.T.: 0.000 min
 Exp R.T.: 7.062 min
 Response: 0
 Conc: N.D.

Instrument :
 ECD_D
 ClientSampleId :



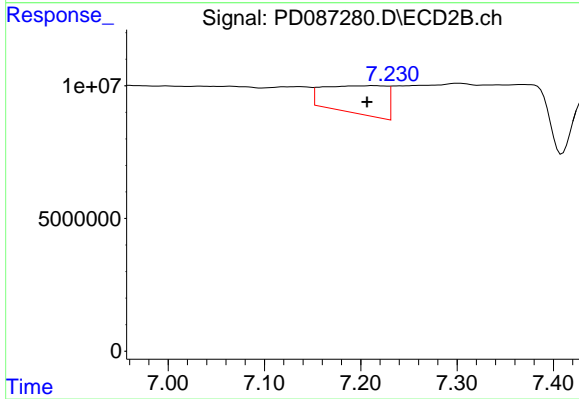
#24 Toxaphene-3

R.T.: 6.768 min
 Delta R.T.: 0.004 min
 Response: 624729
 Conc: 2.19 ng/ml



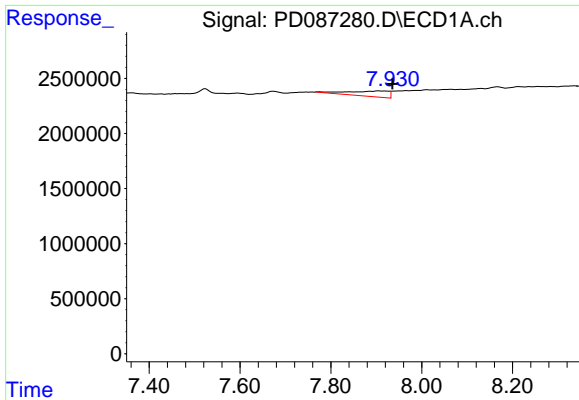
#25 Toxaphene-4

R.T.: 7.182 min
 Delta R.T.: 0.028 min
 Response: 136848
 Conc: 2.12 ng/ml



#25 Toxaphene-4

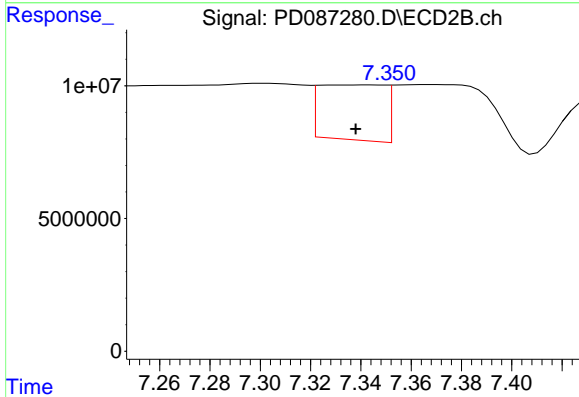
R.T.: 7.213 min
 Delta R.T.: 0.007 min
 Response: 47023446
 Conc: 235.16 ng/ml



#26 Toxaphene-5

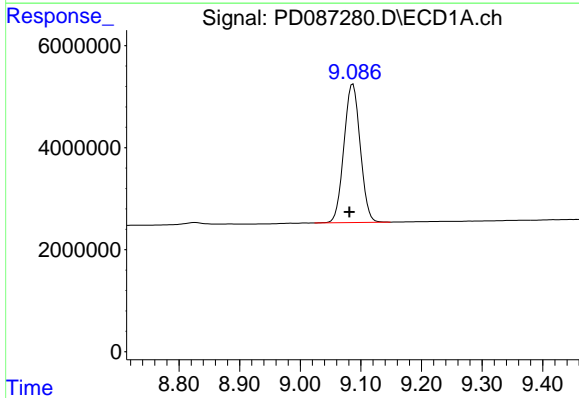
R.T.: 7.907 min
 Delta R.T.: -0.029 min
 Response: 3072295
 Conc: 65.64 ng/ml

Instrument :
 ECD_D
 ClientSampleId :



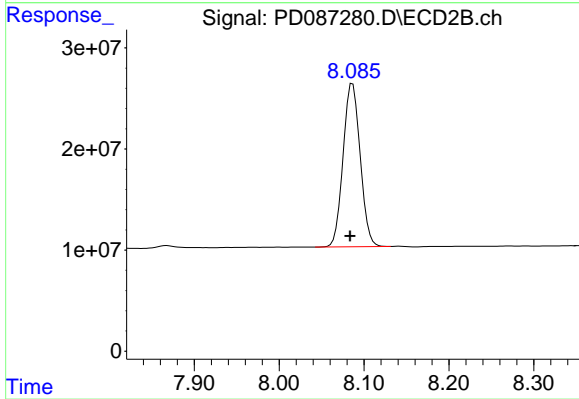
#26 Toxaphene-5

R.T.: 7.342 min
 Delta R.T.: 0.004 min
 Response: 37497351
 Conc: 252.44 ng/ml



#27 Decachlorobiphenyl

R.T.: 9.087 min
 Delta R.T.: 0.005 min
 Response: 50722181
 Conc: 16.61 ng/ml



#27 Decachlorobiphenyl

R.T.: 8.086 min
 Delta R.T.: 0.003 min
 Response: 225693325
 Conc: 17.13 ng/ml