

Data Path : Z:\pestpcbsrv\HPCHEM1\ECD_D\Data\PD122319\
 Data File : PD056722.D
 Signal(s) : Signal #1: ECD1A.ch Signal #2: ECD2B.ch
 Acq On : 23 Dec 2019 11:54
 Operator : SG\AJ
 Sample : K6240-02
 Misc :
 ALS Vial : 9 Sample Multiplier: 1

Integration File signal 1: autoint1.e
 Integration File signal 2: autoint2.e
 Quant Time: Dec 24 00:34:04 2019
 Quant Method : Z:\pestpcbsrv\HPCHEM1\ECD_D\Method\PD120219CLP.M
 Quant Title : GC Extractables
 QLast Update : Tue Dec 03 08:51:13 2019
 Response via : Initial Calibration
 Integrator: ChemStation

Volume Inj. : 1 µl
 Signal #1 Phase : ZB-MR2 Signal #2 Phase: ZB-MR1
 Signal #1 Info : 30M x 0.32mm x0.2 Signal #2 Info : 30M x 0.32mm x 0.50µm

Compound	RT#1	RT#2	Resp#1	Resp#2	ng/ml	ng/ml

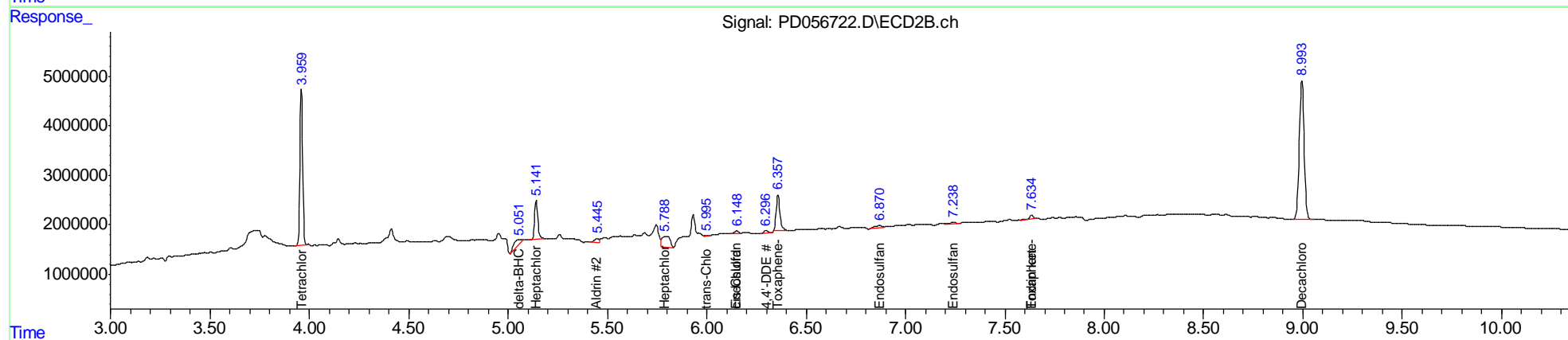
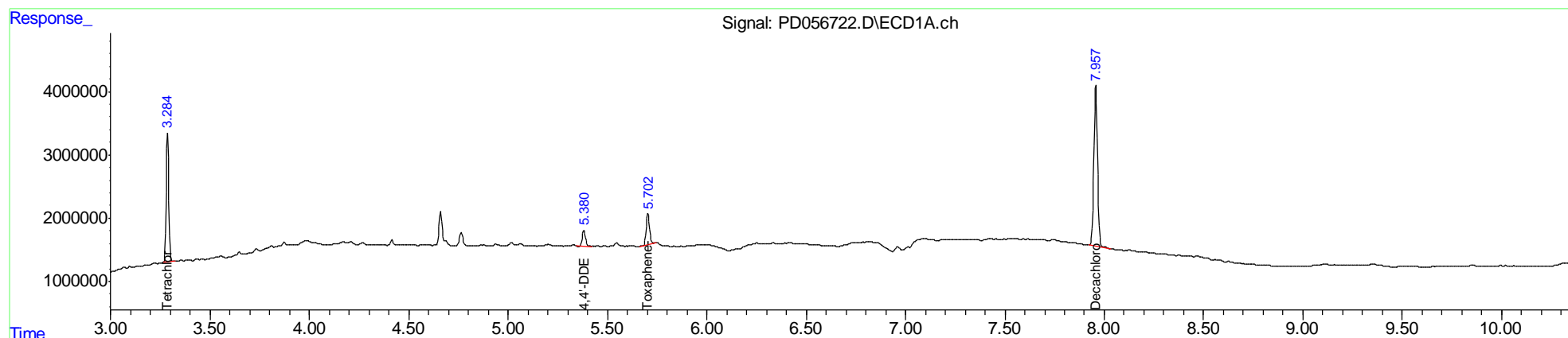
System Monitoring Compounds						
1) SA Tetrachlo...	3.286	3.960	17583007	30820590	21.230	25.636
27) SA Decachlor...	7.958	8.995	34288331	48164405	37.973	40.032
Target Compounds						
4) MA Heptachlor	0.000	5.142	0	8845679	N.D.	5.427
5) MB Aldrin	0.000	5.447	0	1094768	N.D.	0.666
7) B delta-BHC	0.000	5.054f	0	2891521	N.D.	1.736
8) B Heptachlo...	0.000	5.789f	0	6156586	N.D.	3.974
9) A Endosulfan I	0.000	6.150	0	644021	N.D.	0.444
10) B trans-Chl...	0.000	5.996f	0	234798	N.D.	0.142
11) B cis-Chlor...	0.000	6.150	0	644021	N.D.	0.400
12) B 4,4'-DDE	5.381	6.298	2754014	645173	2.726	0.411 #
15) B Endosulfa...	0.000	6.871	0	1145051	N.D.	0.781
19) B Endosulfa...	0.000	7.241	0	986859	N.D.	0.738
21) B Endrin ke...	0.000	7.635f	0	927461	N.D.	0.630
22) Toxaphene-1	0.000	6.359	0	9290488	N.D.	827.518
23) Toxaphene-2	5.704	0.000	5609658	0	576.472	N.D. #
26) Toxaphene-5	0.000	7.635	0	927461	N.D.	36.287

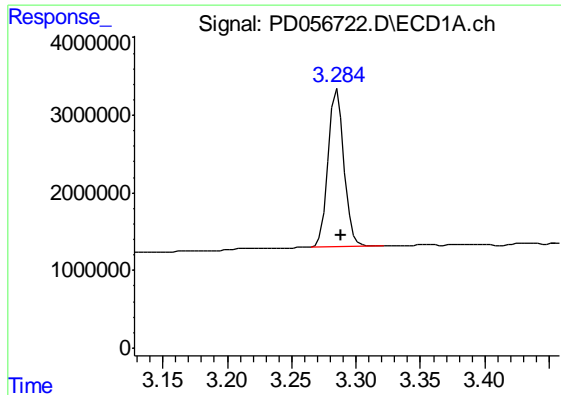
(f)=RT Delta > 1/2 Window (#)=Amounts differ by > 25% (m)=manual int.

Data Path : Z:\pestpcbsrv\HPCHEM1\ECD_D\Data\PD122319\
 Data File : PD056722.D
 Signal(s) : Signal #1: ECD1A.ch Signal #2: ECD2B.ch
 Acq On : 23 Dec 2019 11:54
 Operator : SG\AJ
 Sample : K6240-02
 Misc :
 ALS Vial : 9 Sample Multiplier: 1

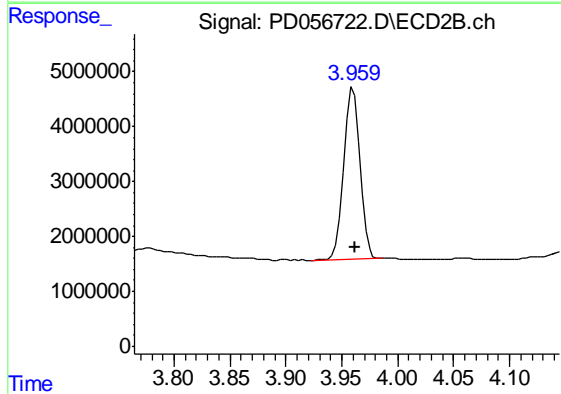
Integration File signal 1: autoint1.e
 Integration File signal 2: autoint2.e
 Quant Time: Dec 24 00:34:04 2019
 Quant Method : Z:\pestpcbsrv\HPCHEM1\ECD_D\Method\PD120219CLP.M
 Quant Title : GC Extractables
 QLast Update : Tue Dec 03 08:51:13 2019
 Response via : Initial Calibration
 Integrator: ChemStation

Volume Inj. : 1 µl
 Signal #1 Phase : ZB-MR2 Signal #2 Phase: ZB-MR1
 Signal #1 Info : 30M x 0.32mm x0.2 Signal #2 Info : 30M x 0.32mm x 0.50µm

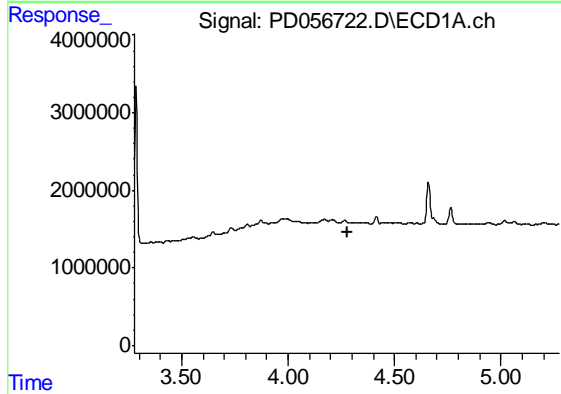




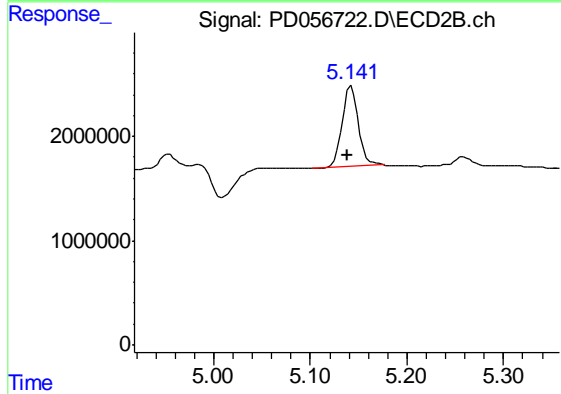
#1 Tetrachloro-m-xylene
 R.T.: 3.286 min
 Delta R.T.: -0.002 min
 Response: 17583007
 Conc: 21.23 ng/ml



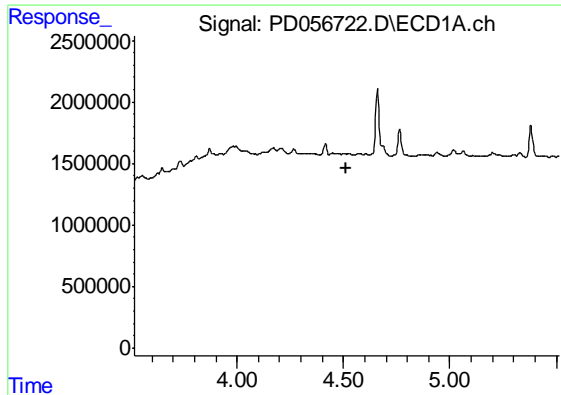
#1 Tetrachloro-m-xylene
 R.T.: 3.960 min
 Delta R.T.: -0.002 min
 Response: 30820590
 Conc: 25.64 ng/ml



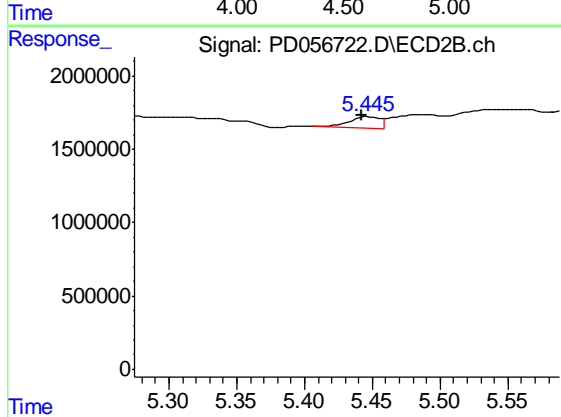
#4 Heptachlor
 R.T.: 0.000 min
 Exp R.T. : 4.276 min
 Response: 0
 Conc: N.D.



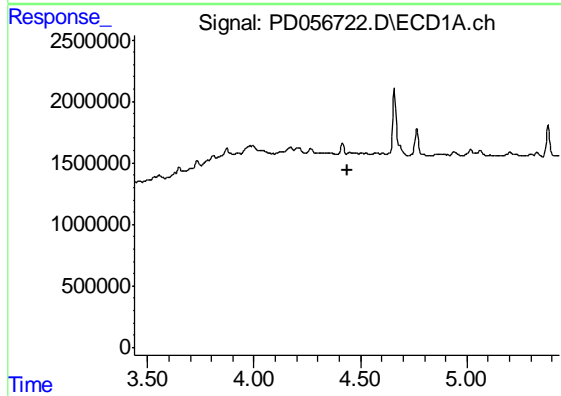
#4 Heptachlor
 R.T.: 5.142 min
 Delta R.T.: 0.004 min
 Response: 8845679
 Conc: 5.43 ng/ml



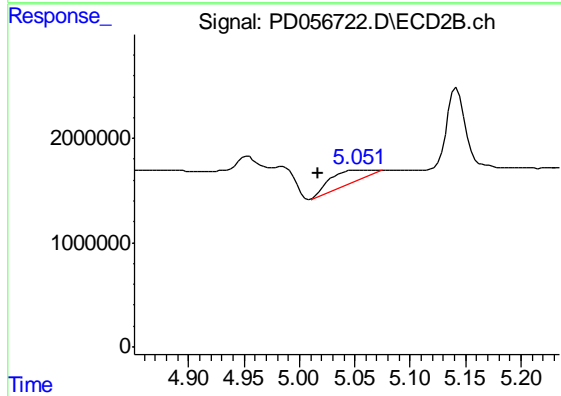
#5 Aldrin
 R.T.: 0.000 min
 Exp R.T. : 4.516 min
 Response: 0
 Conc: N.D.



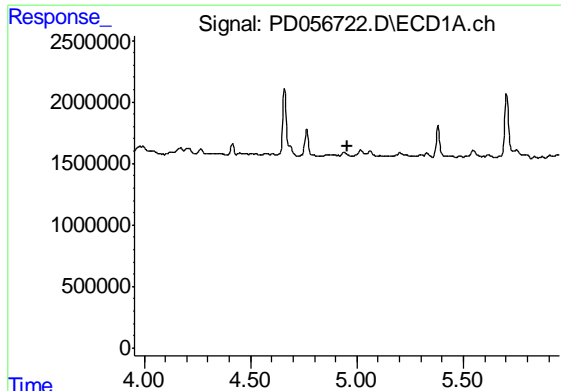
#5 Aldrin
 R.T.: 5.447 min
 Delta R.T.: 0.004 min
 Response: 1094768
 Conc: 0.67 ng/ml



#7 delta-BHC
 R.T.: 0.000 min
 Exp R.T. : 4.436 min
 Response: 0
 Conc: N.D.

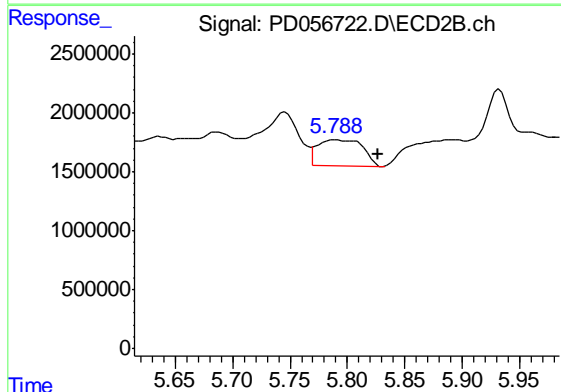


#7 delta-BHC
 R.T.: 5.054 min
 Delta R.T.: 0.037 min
 Response: 2891521
 Conc: 1.74 ng/ml



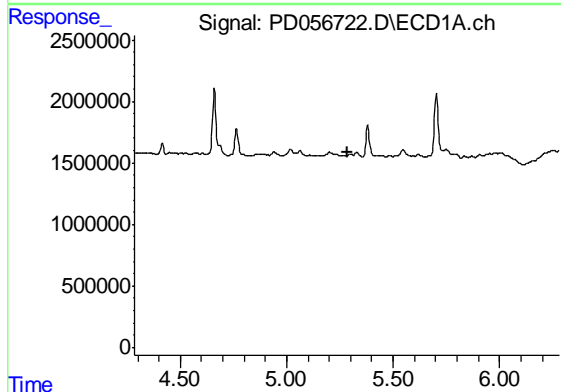
#8 Heptachlor epoxide

R.T.: 0.000 min
 Exp R.T. : 4.953 min
 Response: 0
 Conc: N.D.



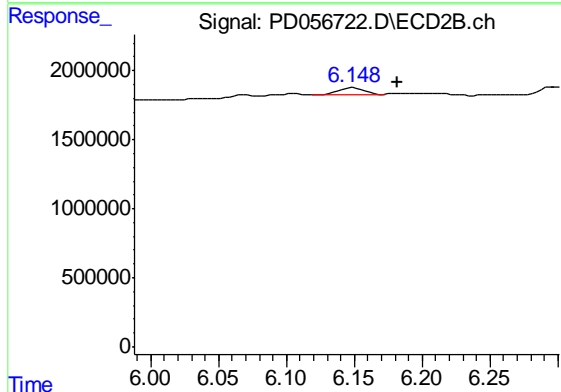
#8 Heptachlor epoxide

R.T.: 5.789 min
 Delta R.T.: -0.038 min
 Response: 6156586
 Conc: 3.97 ng/ml



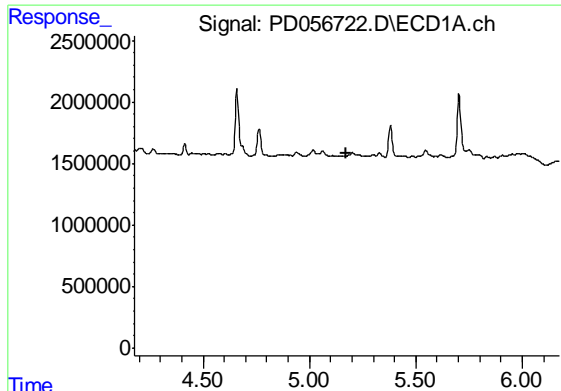
#9 Endosulfan I

R.T.: 0.000 min
 Exp R.T. : 5.284 min
 Response: 0
 Conc: N.D.

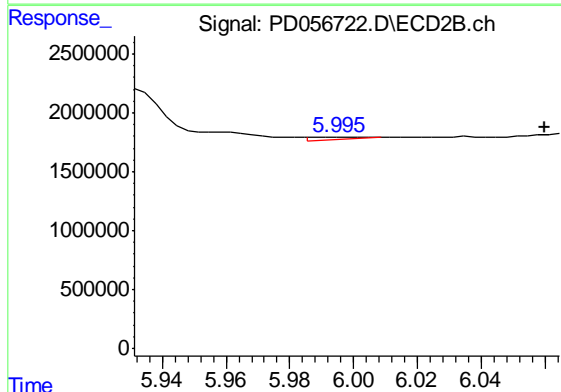


#9 Endosulfan I

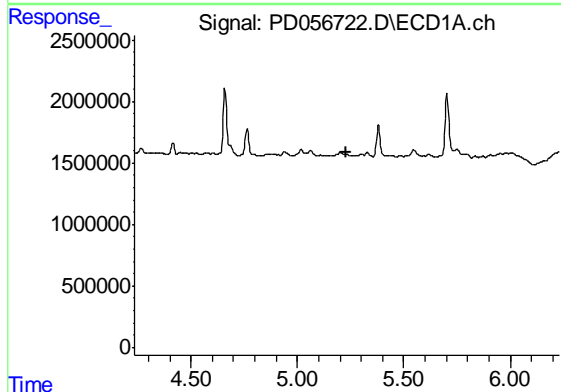
R.T.: 6.150 min
 Delta R.T.: -0.032 min
 Response: 644021
 Conc: 0.44 ng/ml



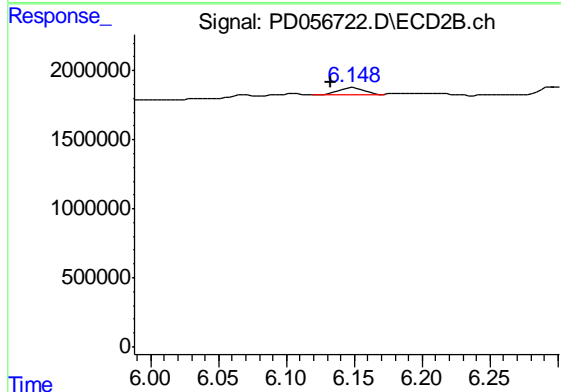
#10 trans-Chlordane
 R.T.: 0.000 min
 Exp R.T. : 5.175 min
 Response: 0
 Conc: N.D.



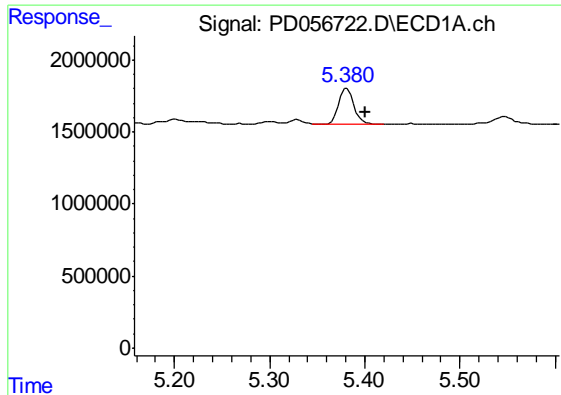
#10 trans-Chlordane
 R.T.: 5.996 min
 Delta R.T.: -0.064 min
 Response: 234798
 Conc: 0.14 ng/ml



#11 cis-Chlordane
 R.T.: 0.000 min
 Exp R.T. : 5.232 min
 Response: 0
 Conc: N.D.

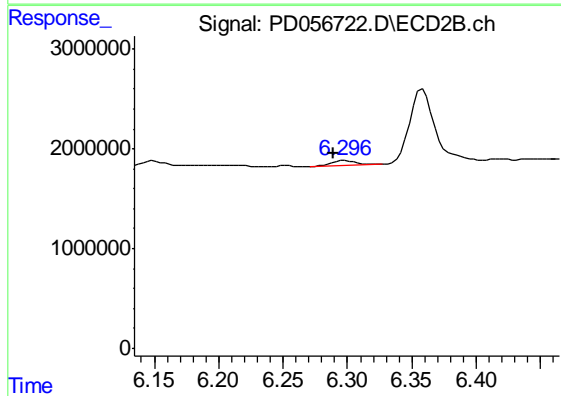


#11 cis-Chlordane
 R.T.: 6.150 min
 Delta R.T.: 0.017 min
 Response: 644021
 Conc: 0.40 ng/ml



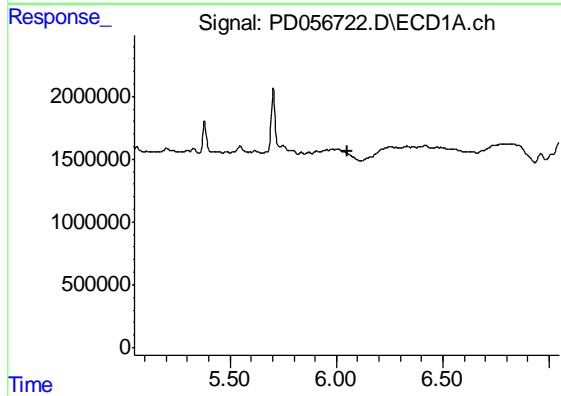
#12 4,4'-DDE

R.T.: 5.381 min
Delta R.T.: -0.020 min
Response: 2754014
Conc: 2.73 ng/ml



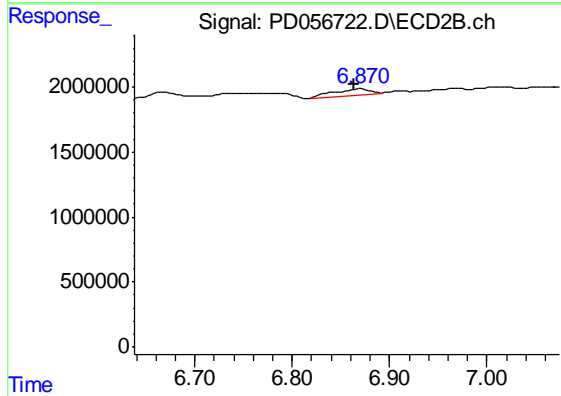
#12 4,4'-DDE

R.T.: 6.298 min
Delta R.T.: 0.008 min
Response: 645173
Conc: 0.41 ng/ml



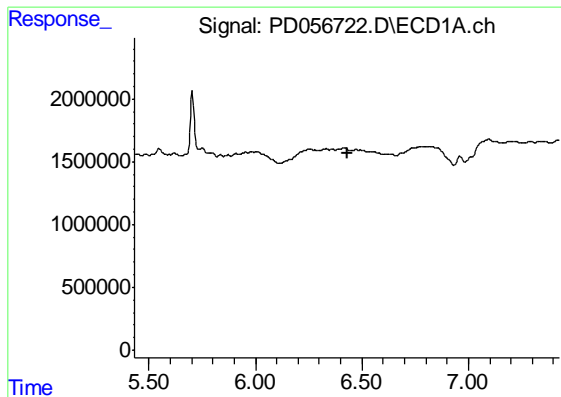
#15 Endosulfan II

R.T.: 0.000 min
Exp R.T. : 6.051 min
Response: 0
Conc: N.D.

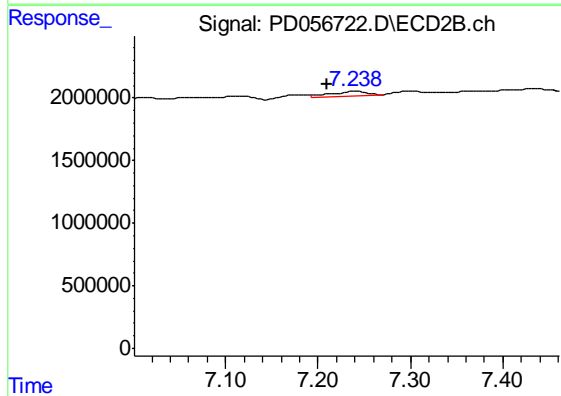


#15 Endosulfan II

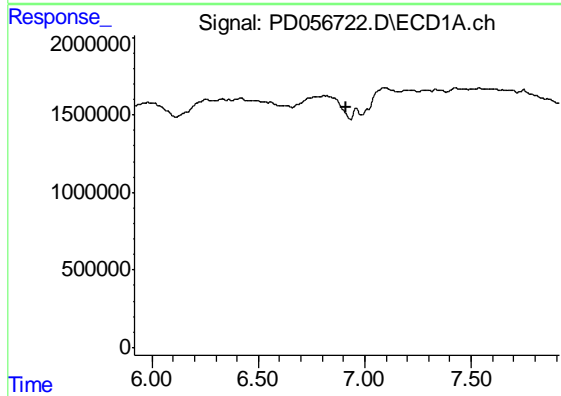
R.T.: 6.871 min
Delta R.T.: 0.007 min
Response: 1145051
Conc: 0.78 ng/ml



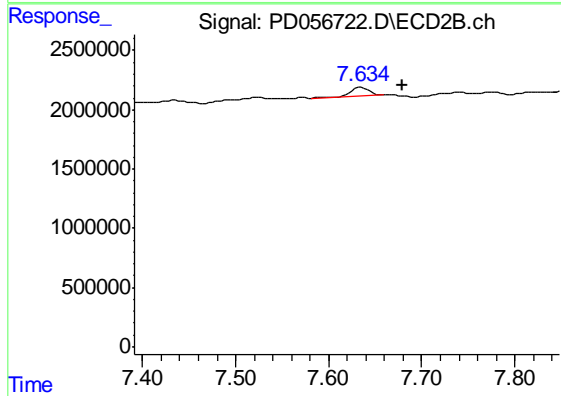
#19 Endosulfan Sulfate
 R.T.: 0.000 min
 Exp R.T. : 6.430 min
 Response: 0
 Conc: N.D.



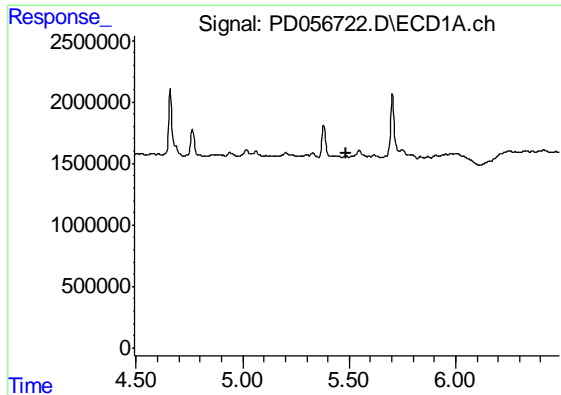
#19 Endosulfan Sulfate
 R.T.: 7.241 min
 Delta R.T.: 0.031 min
 Response: 986859
 Conc: 0.74 ng/ml



#21 Endrin ketone
 R.T.: 0.000 min
 Exp R.T. : 6.915 min
 Response: 0
 Conc: N.D.

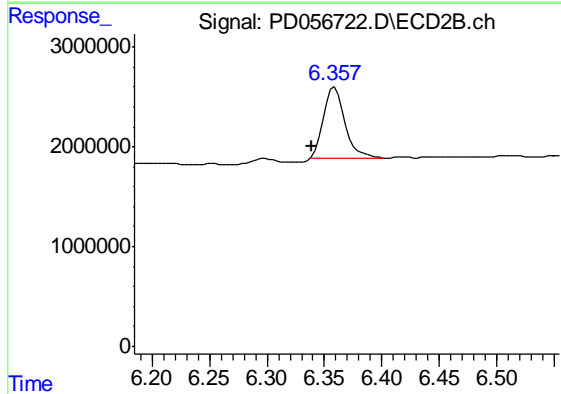


#21 Endrin ketone
 R.T.: 7.635 min
 Delta R.T.: -0.044 min
 Response: 927461
 Conc: 0.63 ng/ml



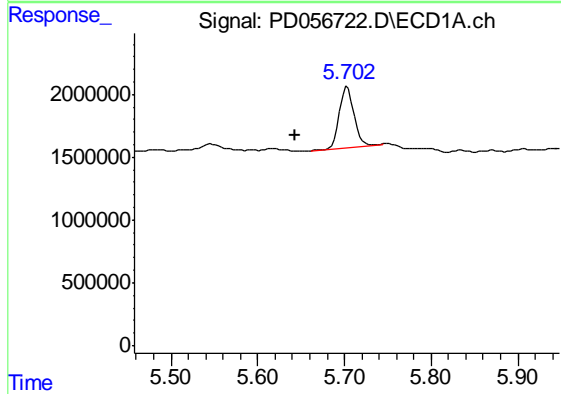
#22 Toxaphene-1

R.T.: 0.000 min
 Exp R.T. : 5.489 min
 Response: 0
 Conc: N.D.



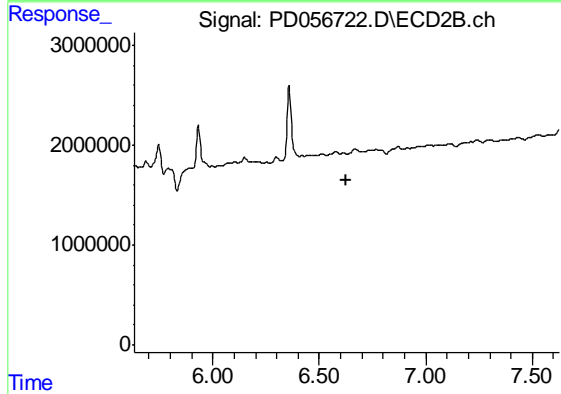
#22 Toxaphene-1

R.T.: 6.359 min
 Delta R.T.: 0.020 min
 Response: 9290488
 Conc: 827.52 ng/ml



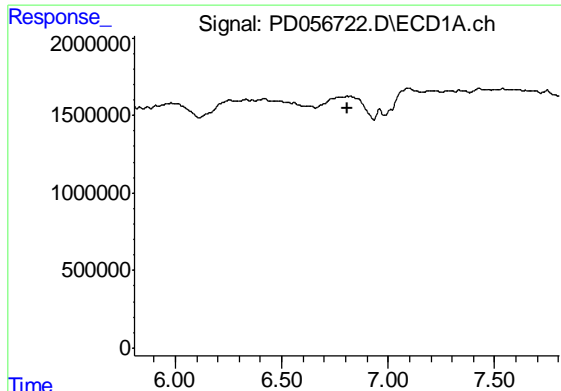
#23 Toxaphene-2

R.T.: 5.704 min
 Delta R.T.: 0.060 min
 Response: 5609658
 Conc: 576.47 ng/ml



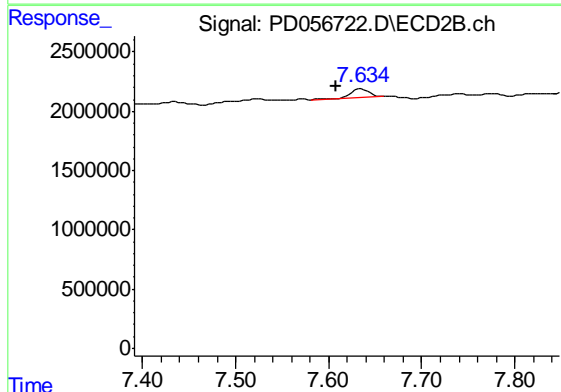
#23 Toxaphene-2

R.T.: 0.000 min
 Exp R.T. : 6.628 min
 Response: 0
 Conc: N.D.



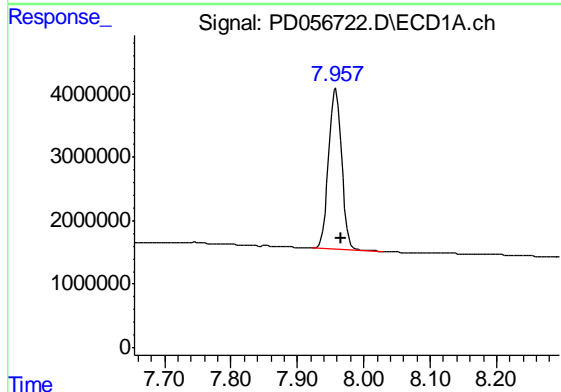
#26 Toxaphene-5

R.T.: 0.000 min
 Exp R.T. : 6.808 min
 Response: 0
 Conc: N.D.



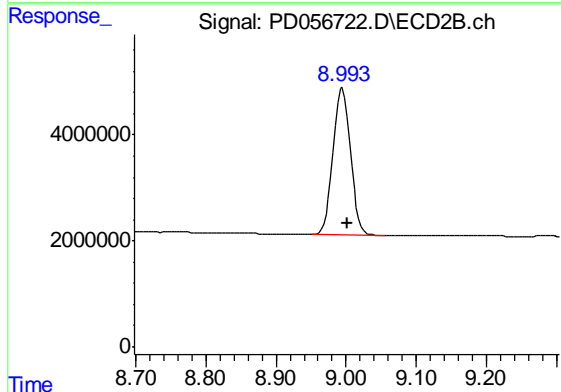
#26 Toxaphene-5

R.T.: 7.635 min
 Delta R.T.: 0.028 min
 Response: 927461
 Conc: 36.29 ng/ml



#27 Decachlorobiphenyl

R.T.: 7.958 min
 Delta R.T.: -0.007 min
 Response: 34288331
 Conc: 37.97 ng/ml



#27 Decachlorobiphenyl

R.T.: 8.995 min
 Delta R.T.: -0.008 min
 Response: 48164405
 Conc: 40.03 ng/ml