

Data Path : Z:\pestpcbsrv\HPCHEM1\ECD_D\Data\PD122323\
 Data File : PD080305.D
 Signal(s) : Signal #1: ECD1A.ch Signal #2: ECD2B.ch
 Acq On : 21 Dec 2023 08:55
 Operator : AR\AJ
 Sample : PB157884BS
 Misc :
 ALS Vial : 54 Sample Multiplier: 1

Instrument :
 ECD_D
ClientSampleId :
 PLCS884

Manual Integrations
APPROVED

Reviewed By :Abdul Mirza 12/26/2023
 Supervised By :Ankita Jodhani 12/26/2023

Integration File signal 1: autoint1.e
 Integration File signal 2: autoint2.e
 Quant Time: Dec 21 09:09:06 2023
 Quant Method : Z:\pestpcbsrv\HPCHEM1\ECD_D\Method\PD121723CLP-TCLP.M
 Quant Title : GC Extractables
 QLast Update : Sat Dec 16 02:51:51 2023
 Response via : Initial Calibration
 Integrator: ChemStation

Volume Inj. : 1 µl
 Signal #1 Phase : ZB-MR2 Signal #2 Phase: ZB-MR1
 Signal #1 Info : 30M x 0.32mm x0.2 Signal #2 Info : 30M x 0.32mm x 0.50µm

	Compound	RT#1	RT#2	Resp#1	Resp#2	ng/ml	ng/ml

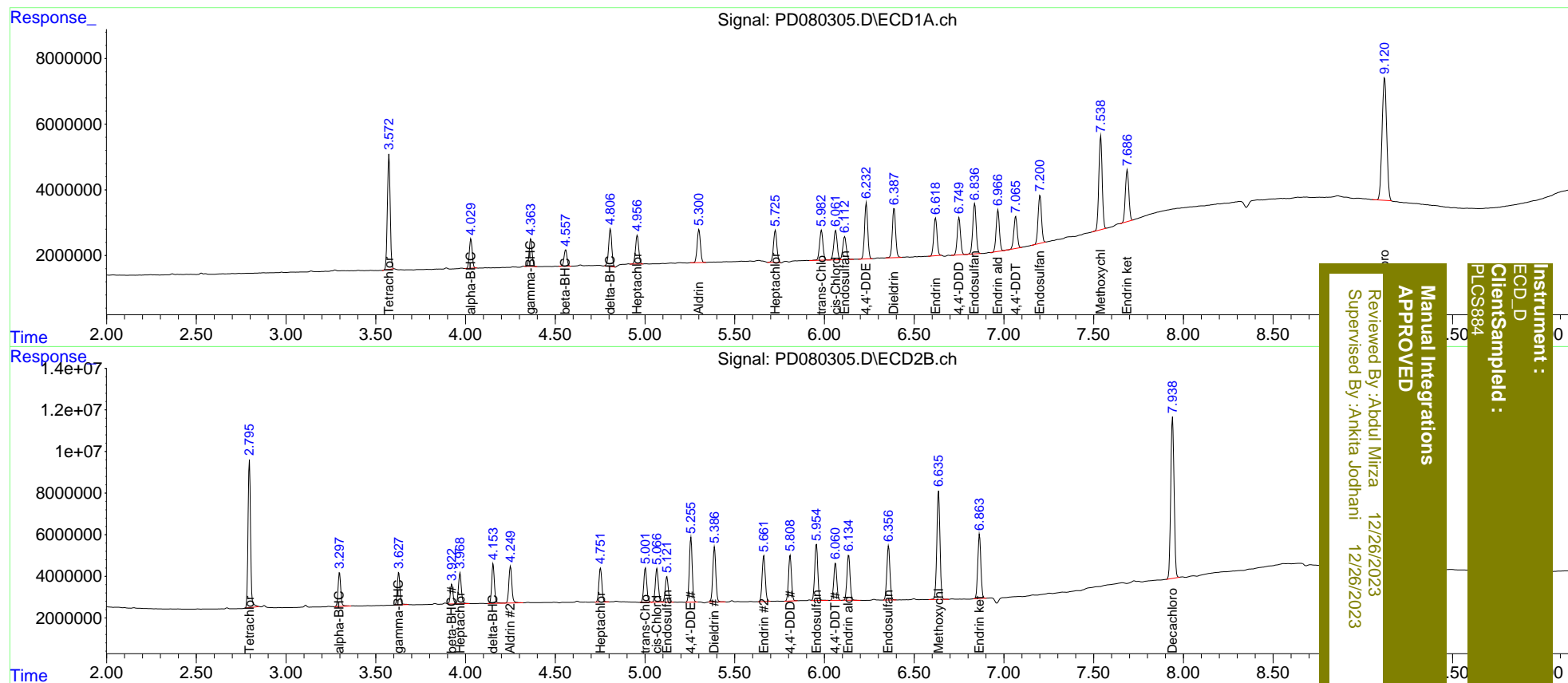
System Monitoring Compounds							
1)	SA Tetrachlo...	3.574	2.796	37721065	69163452	26.459	28.029
27)	SA Decachlor...	9.121	7.940	66999078	100.7E6	37.601	37.136
Target Compounds							
2)	A alpha-BHC	4.030	3.298	9951015	16975626	4.101	4.325
3)	MA gamma-BHC...	4.364	3.628	9257123	16256400	4.007	4.422
4)	MA Heptachlor	4.957	3.970	10712151	16760818	4.472	4.632
5)	MB Aldrin	5.301	4.251	12677257	20804394	5.731	5.969
6)	B beta-BHC	4.559	3.924	5736321	9738008	5.773	5.709
7)	B delta-BHC	4.806	4.154	14100907	19982120	6.106m	5.216
8)	B Heptachlo...	5.727	4.753	12907934	18961492	6.170	5.751
9)	A Endosulfan I	6.113	5.122	9441039	14113627	4.619	4.490
10)	B trans-Chl...	5.983	5.003	12020340	19121733	5.945	5.925
11)	B cis-Chlor...	6.063	5.067	11894414	19010807	5.771	5.736
12)	B 4,4'-DDE	6.233	5.256	21143955	34658348	11.019	11.251
13)	MA Dieldrin	6.388	5.388	19292977	31124365	8.972	8.969
14)	MA Endrin	6.619	5.662	14763589	26385986	8.240	8.799
15)	B Endosulfa...	6.837	5.955	20241747	32578767	10.964	11.301
16)	A 4,4'-DDD	6.750	5.809	14334323	24810281	8.944	9.391
17)	MA 4,4'-DDT	7.066	6.062	12736640	21137659	7.402	7.605
18)	B Endrin al...	6.967	6.135	15825345	26045704	10.973	11.608
19)	B Endosulfa...	7.201	6.357	19273395	31249606	10.946	11.577
20)	A Methoxychlor	7.540	6.636	36968060	63428922	41.300	45.776
21)	B Endrin ke...	7.687	6.864	21091257	36553480	11.040	11.780

(f)=RT Delta > 1/2 Window (#)=Amounts differ by > 25% (m)=manual int.

Data Path : Z:\pestpcbsrv\HPCHEM1\ECD_D\Data\PD122323\
 Data File : PD080305.D
 Signal(s) : Signal #1: ECD1A.ch Signal #2: ECD2B.ch
 Acq On : 21 Dec 2023 08:55
 Operator : AR\AJ
 Sample : PB157884BS
 Misc :
 ALS Vial : 54 Sample Multiplier: 1

Integration File signal 1: autoint1.e
 Integration File signal 2: autoint2.e
 Quant Time: Dec 21 09:09:06 2023
 Quant Method : Z:\pestpcbsrv\HPCHEM1\ECD_D\Method\PD121723CLP-TCLP.M
 Quant Title : GC Extractables
 QLast Update : Sat Dec 16 02:51:51 2023
 Response via : Initial Calibration
 Integrator: ChemStation

Volume Inj. : 1 µl
 Signal #1 Phase : ZB-MR2 Signal #2 Phase: ZB-MR1
 Signal #1 Info : 30M x 0.32mm x0.2 Signal #2 Info : 30M x 0.32mm x 0.50µm



Instrument : ECD_D
 Client Sampled : PLCS894
 Manual Integrations APPROVED
 Reviewed By : Aboul Mirza 12/26/2023
 Supervised By : Ankita Jodhani 12/26/2023