

Data Path : Z:\pestpcbsrv\HPCHEM1\ECD_D\Data\PD122324\
 Data File : PD087291.D
 Signal(s) : Signal #1: ECD1A.ch Signal #2: ECD2B.ch
 Acq On : 23 Dec 2024 11:46
 Operator : AR\AJ
 Sample : P5267-02
 Misc :
 ALS Vial : 8 Sample Multiplier: 1

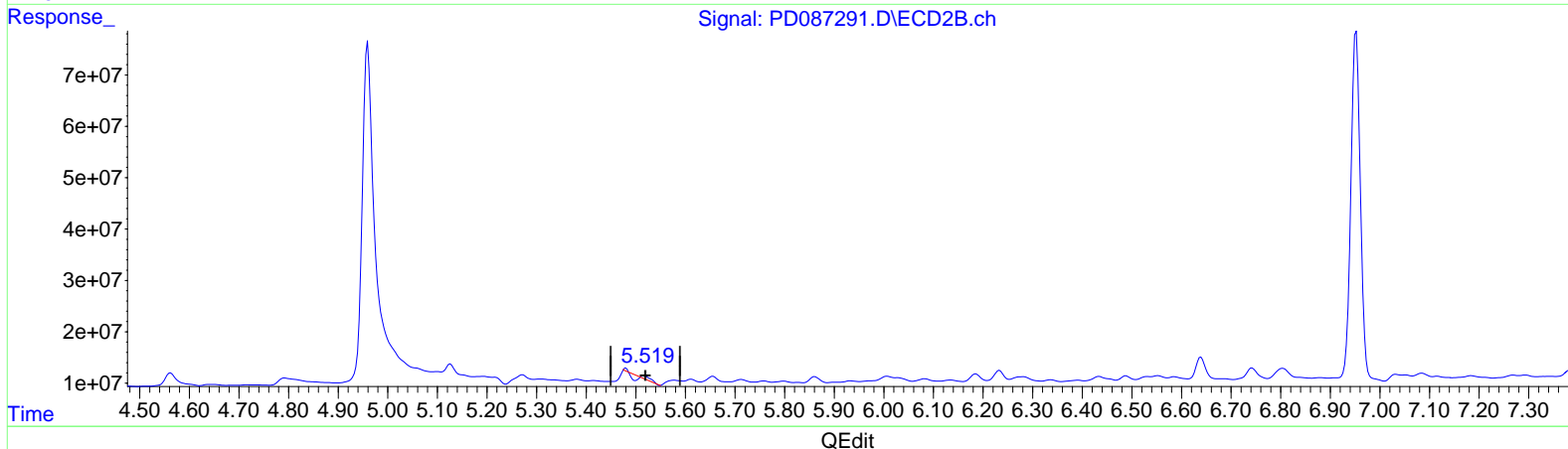
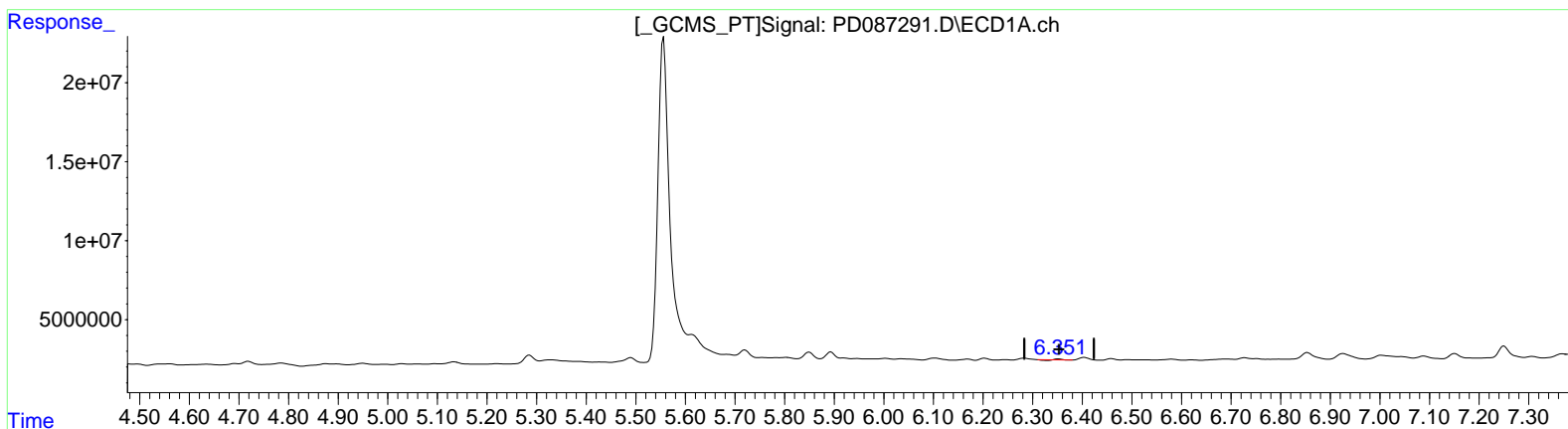
Instrument :
 ECD_D
 ClientSampleId :
 E28Z0

Manual Integrations APPROVED

Reviewed By : Abdul Mirza 12/26/2024
 Supervised By : Ankita Jodhani 12/27/2024

Integration File signal 1: autoint1.e
 Integration File signal 2: autoint2.e
 Quant Time: Dec 23 23:58:43 2024
 Quant Method : Z:\pestpcbsrv\HPCHEM1\ECD_D\Method\PD122024CLP.M
 Quant Title : GC Extractables
 QLast Update : Fri Dec 20 23:32:53 2024
 Response via : Initial Calibration
 Integrator: ChemStation

Volume Inj. : 1 µl
 Signal #1 Phase : ZB-MR1 Signal #2 Phase: ZB-MR2
 Signal #1 Info : 30M x 0.32mm x 0.5 Signal #2 Info : 30M x 0.32mm x 0.25µm



(13) Dieldrin (MA)
 6.352min 0.020 ng/ml
 response 71854

(13) Dieldrin #2 (MA)
 5.517min 0.084 ng/ml
 response 1284268

Data Path : Z:\pestpcbsrv\HPCHEM1\ECD_D\Data\PD122324\
 Data File : PD087291.D
 Signal(s) : Signal #1: ECD1A.ch Signal #2: ECD2B.ch
 Acq On : 23 Dec 2024 11:46
 Operator : AR\AJ
 Sample : P5267-02
 Misc :
 ALS Vial : 8 Sample Multiplier: 1

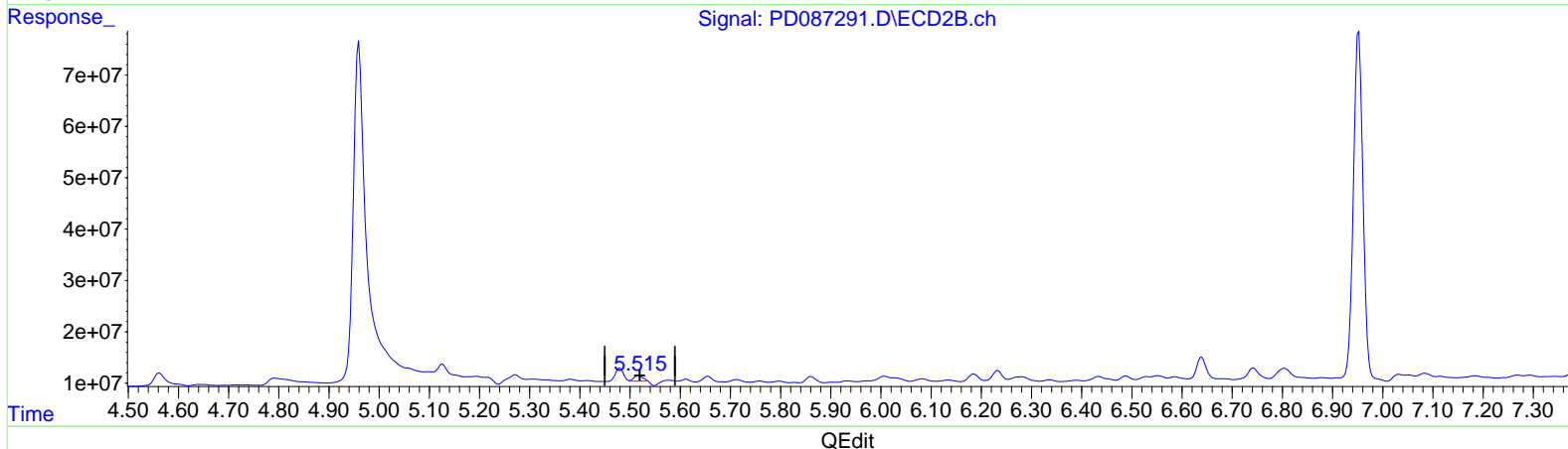
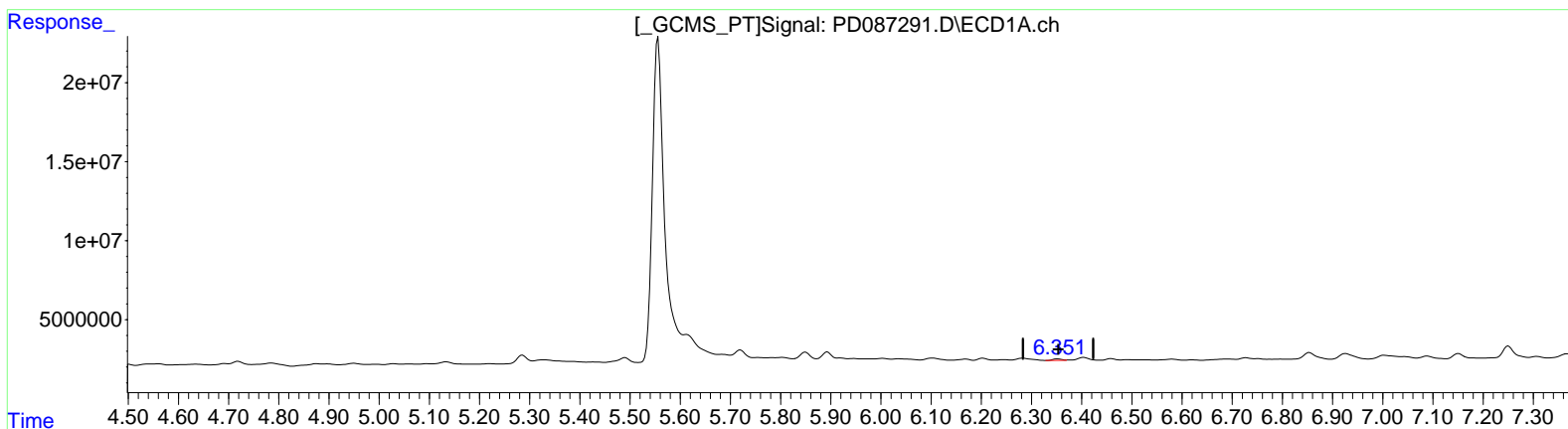
Instrument :
 ECD_D
 ClientSampleId :
 E28Z0

Manual Integrations APPROVED

Reviewed By : Abdul Mirza 12/26/2024
 Supervised By : Ankita Jodhani 12/27/2024

Integration File signal 1: autoint1.e
 Integration File signal 2: autoint2.e
 Quant Time: Dec 23 23:58:43 2024
 Quant Method : Z:\pestpcbsrv\HPCHEM1\ECD_D\Method\PD122024CLP.M
 Quant Title : GC Extractables
 QLast Update : Fri Dec 20 23:32:53 2024
 Response via : Initial Calibration
 Integrator: ChemStation

Volume Inj. : 1 µl
 Signal #1 Phase : ZB-MR1 Signal #2 Phase: ZB-MR2
 Signal #1 Info : 30M x 0.32mm x 0.5 Signal #2 Info : 30M x 0.32mm x 0.25µm



(13) Dieldrin (MA)
 6.351min 0.369 ng/ml m
 response 1335489

(13) Dieldrin #2 (MA)
 5.515min 0.902 ng/ml m
 response 13806747

Data Path : Z:\pestpcbsrv\HPCHEM1\ECD_D\Data\PD122324\
 Data File : PD087291.D
 Signal(s) : Signal #1: ECD1A.ch Signal #2: ECD2B.ch
 Acq On : 23 Dec 2024 11:46
 Operator : AR\AJ
 Sample : P5267-02
 Misc :
 ALS Vial : 8 Sample Multiplier: 1

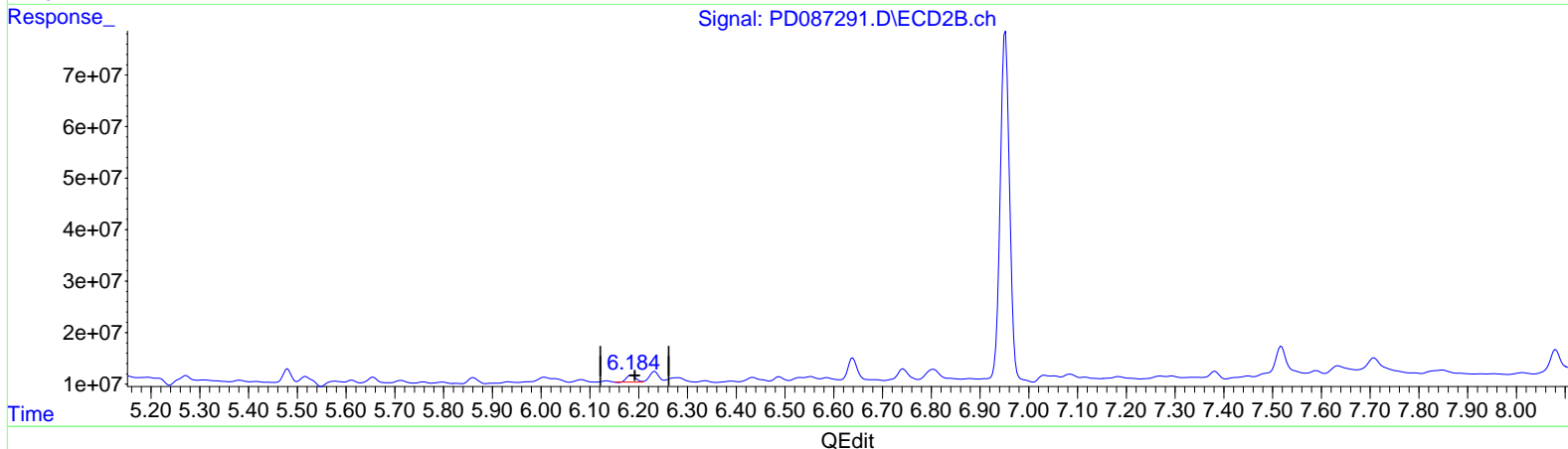
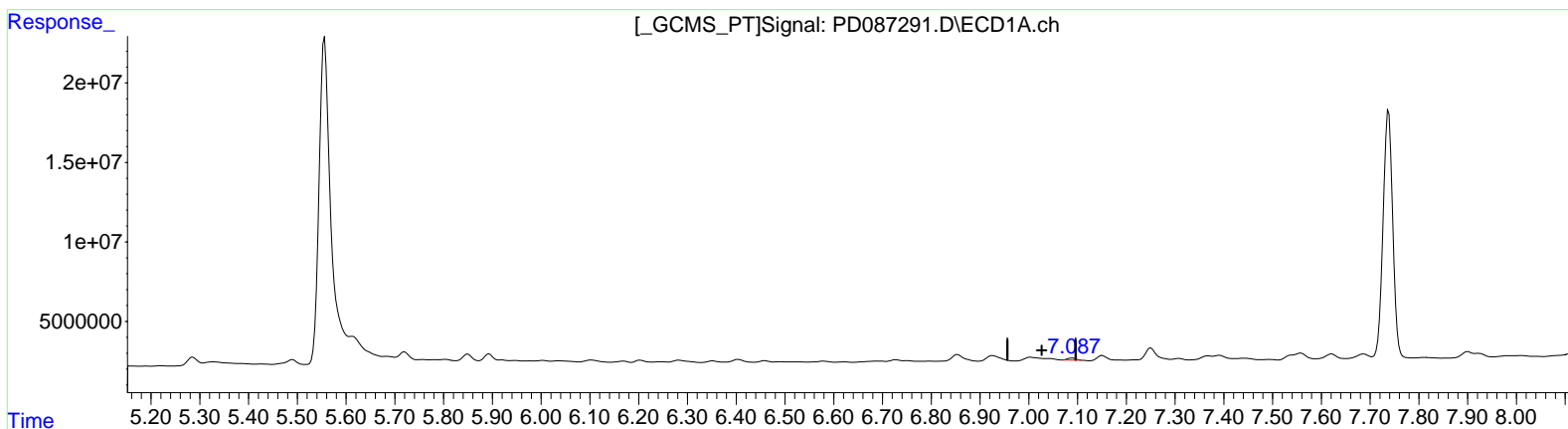
Instrument :
 ECD_D
 ClientSampleId :
 E28Z0

Manual Integrations APPROVED

Reviewed By : Abdul Mirza 12/26/2024
 Supervised By : Ankita Jodhani 12/27/2024

Integration File signal 1: autoint1.e
 Integration File signal 2: autoint2.e
 Quant Time: Dec 23 23:58:43 2024
 Quant Method : Z:\pestpcbsrv\HPCHEM1\ECD_D\Method\PD122024CLP.M
 Quant Title : GC Extractables
 QLast Update : Fri Dec 20 23:32:53 2024
 Response via : Initial Calibration
 Integrator: ChemStation

Volume Inj. : 1 µl
 Signal #1 Phase : ZB-MR1 Signal #2 Phase: ZB-MR2
 Signal #1 Info : 30M x 0.32mm x 0.5 Signal #2 Info : 30M x 0.32mm x 0.25µm



(17) 4,4'-DDT (MA)
 7.089min 0.568 ng/ml
 response 1521438

(17) 4,4'-DDT #2 (MA)
 6.186min 1.445 ng/ml
 response 18218061

Data Path : Z:\pestpcbsrv\HPCHEM1\ECD_D\Data\PD122324\
 Data File : PD087291.D
 Signal(s) : Signal #1: ECD1A.ch Signal #2: ECD2B.ch
 Acq On : 23 Dec 2024 11:46
 Operator : AR\AJ
 Sample : P5267-02
 Misc :
 ALS Vial : 8 Sample Multiplier: 1

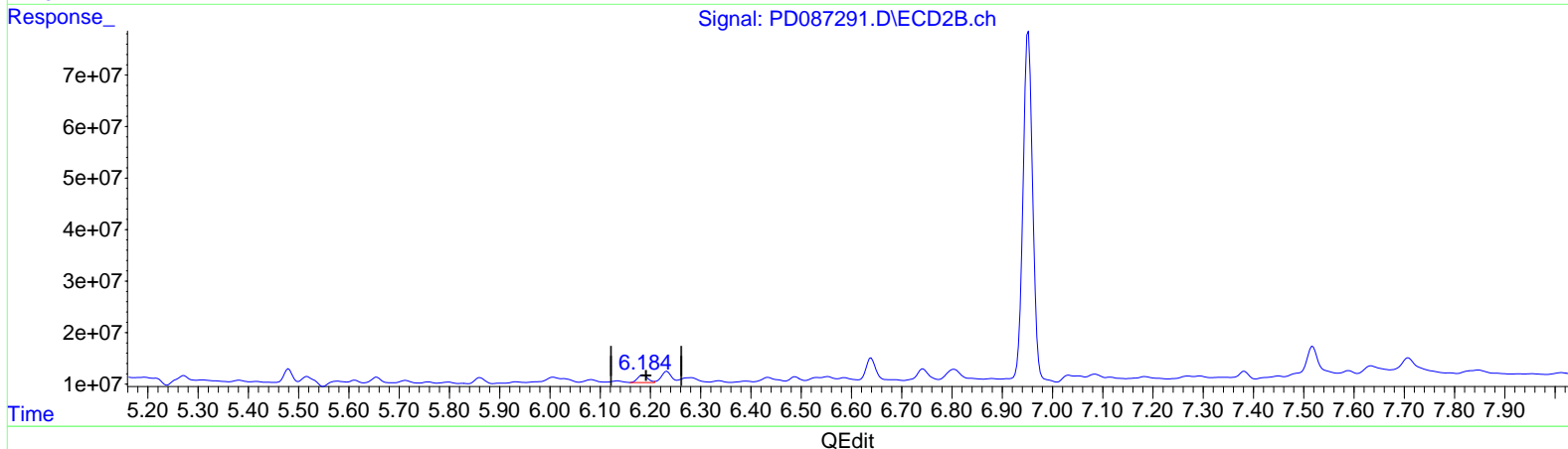
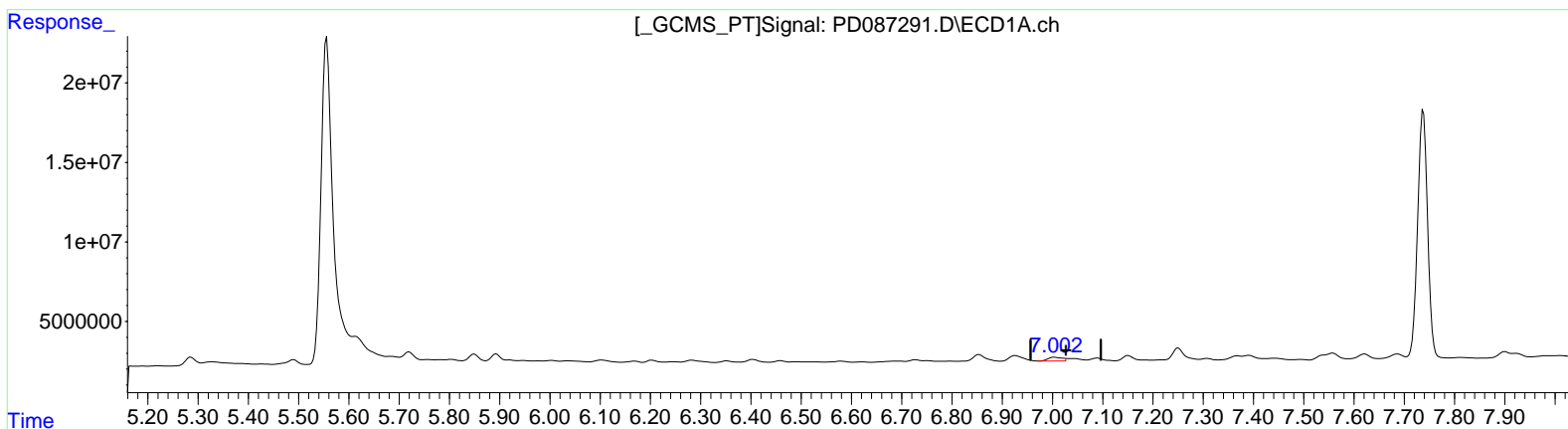
Instrument :
 ECD_D
 ClientSampleId :
 E28Z0

Manual Integrations APPROVED

Reviewed By : Abdul Mirza 12/26/2024
 Supervised By : Ankita Jodhani 12/27/2024

Integration File signal 1: autoint1.e
 Integration File signal 2: autoint2.e
 Quant Time: Dec 23 23:58:43 2024
 Quant Method : Z:\pestpcbsrv\HPCHEM1\ECD_D\Method\PD122024CLP.M
 Quant Title : GC Extractables
 QLast Update : Fri Dec 20 23:32:53 2024
 Response via : Initial Calibration
 Integrator: ChemStation

Volume Inj. : 1 µl
 Signal #1 Phase : ZB-MR1 Signal #2 Phase: ZB-MR2
 Signal #1 Info : 30M x 0.32mm x 0.5 Signal #2 Info : 30M x 0.32mm x 0.25µm



(17) 4,4'-DDT (MA)
 7.002min 1.863 ng/ml m
 response 4995730

(17) 4,4'-DDT #2 (MA)
 6.184min 1.624 ng/ml m
 response 20473224

Data Path : Z:\pestpcbsrv\HPCHEM1\ECD_D\Data\PD122324\
 Data File : PD087291.D
 Signal(s) : Signal #1: ECD1A.ch Signal #2: ECD2B.ch
 Acq On : 23 Dec 2024 11:46
 Operator : AR\AJ
 Sample : P5267-02
 Misc :
 ALS Vial : 8 Sample Multiplier: 1

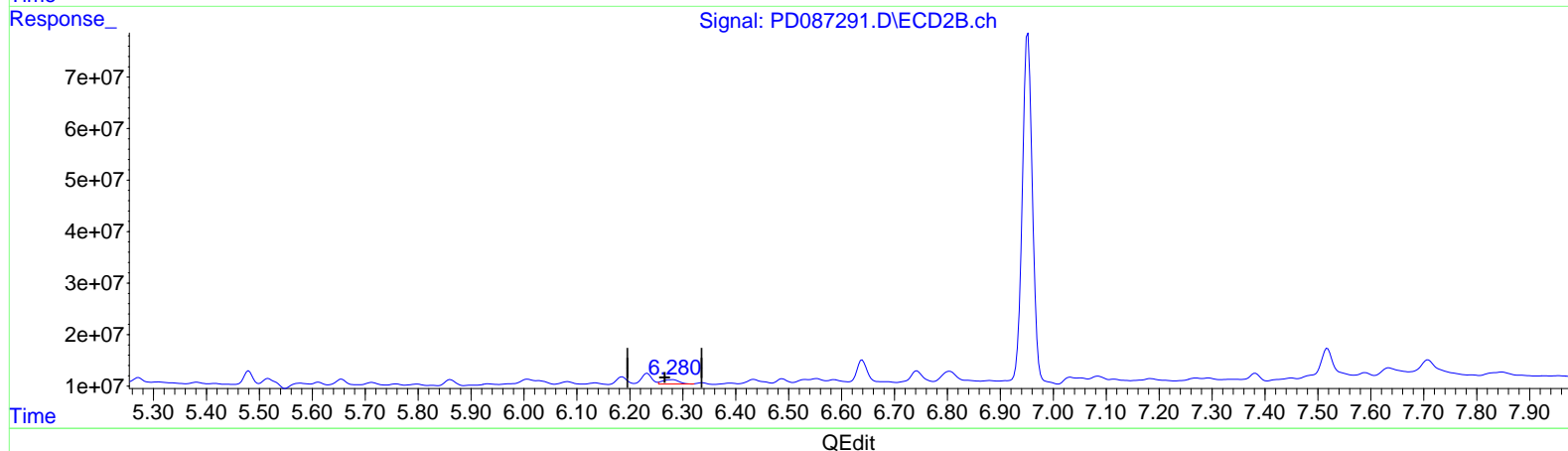
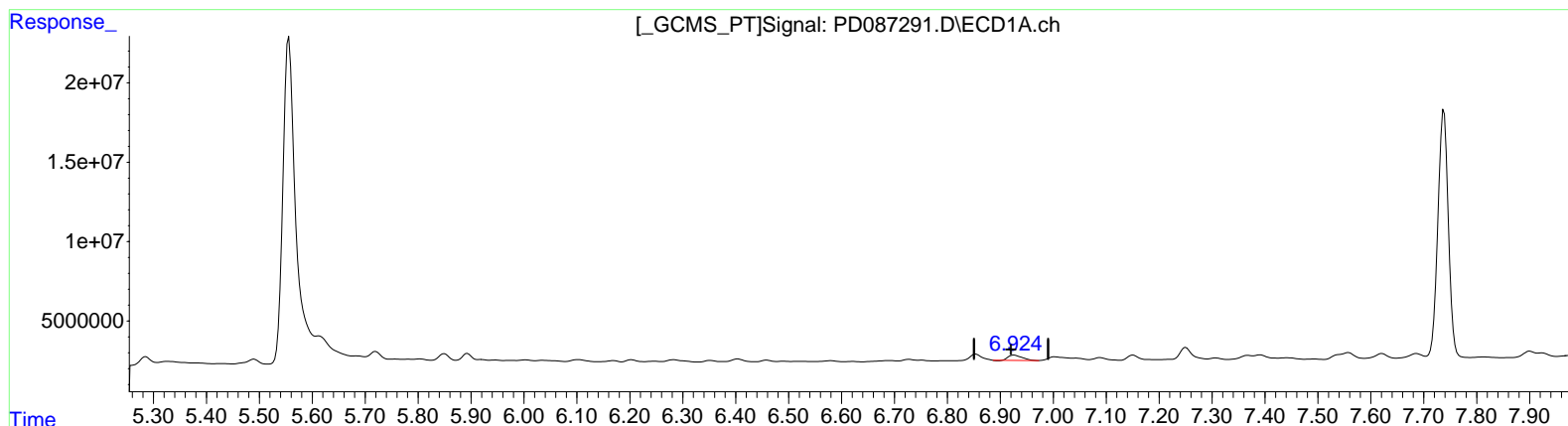
Instrument :
 ECD_D
 ClientSampleId :
 E28Z0

Manual Integrations APPROVED

Reviewed By : Abdul Mirza 12/26/2024
 Supervised By : Ankita Jodhani 12/27/2024

Integration File signal 1: autoint1.e
 Integration File signal 2: autoint2.e
 Quant Time: Dec 23 23:58:43 2024
 Quant Method : Z:\pestpcbsrv\HPCHEM1\ECD_D\Method\PD122024CLP.M
 Quant Title : GC Extractables
 QLast Update : Fri Dec 20 23:32:53 2024
 Response via : Initial Calibration
 Integrator: ChemStation

Volume Inj. : 1 µl
 Signal #1 Phase : ZB-MR1 Signal #2 Phase: ZB-MR2
 Signal #1 Info : 30M x 0.32mm x 0.5 Signal #2 Info : 30M x 0.32mm x 0.25µm



(18) Endrin aldehyde (B)
 6.927min 2.515 ng/ml
 response 5902343

(18) Endrin aldehyde #2 (B)
 6.280min 1.768 ng/ml
 response 18470002

Data Path : Z:\pestpcbsrv\HPCHEM1\ECD_D\Data\PD122324\
Data File : PD087291.D
Signal(s) : Signal #1: ECD1A.ch Signal #2: ECD2B.ch
Acq On : 23 Dec 2024 11:46
Operator : AR\AJ
Sample : P5267-02
Misc :
ALS Vial : 8 Sample Multiplier: 1

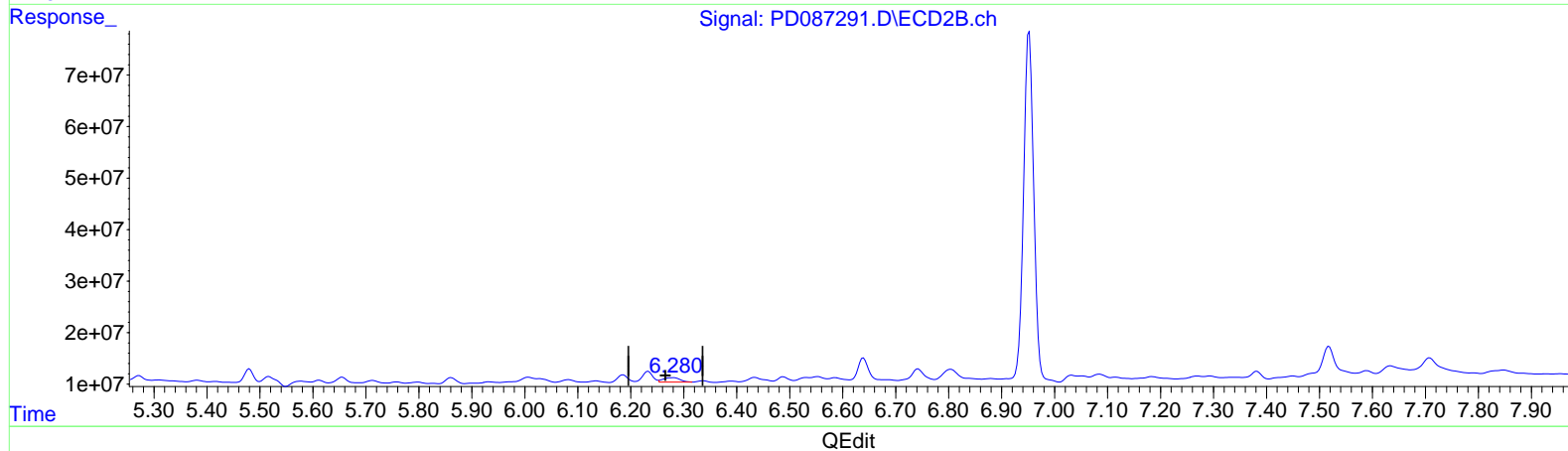
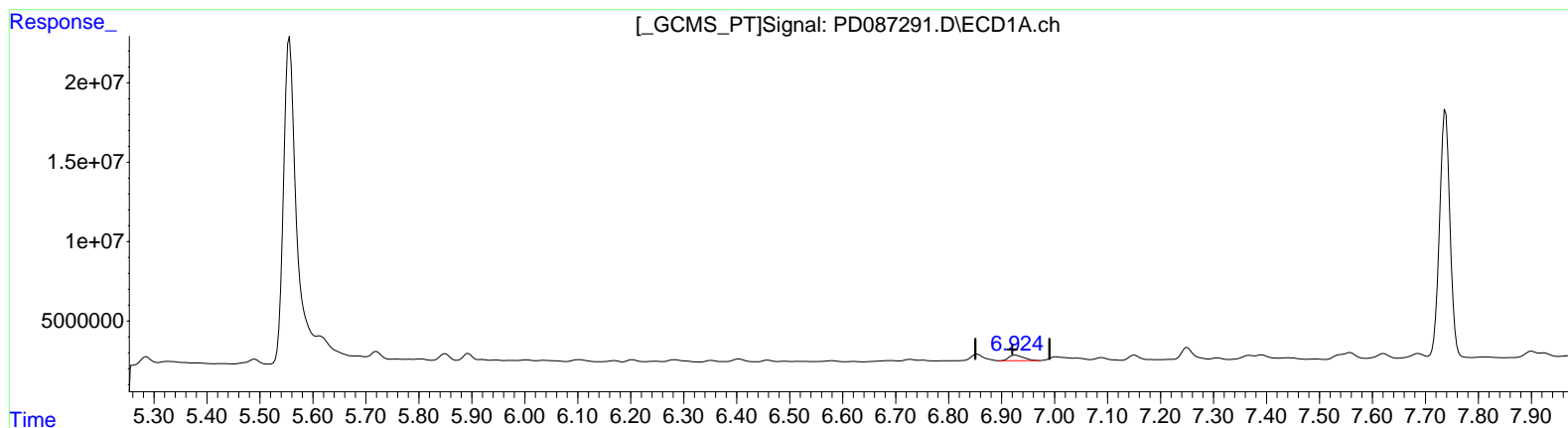
Instrument :
ECD_D
ClientSampleId :
E28Z0

Manual Integrations APPROVED

Reviewed By : Abdul Mirza 12/26/2024
Supervised By : Ankita Jodhani 12/27/2024

Integration File signal 1: autoint1.e
Integration File signal 2: autoint2.e
Quant Time: Dec 23 23:58:43 2024
Quant Method : Z:\pestpcbsrv\HPCHEM1\ECD_D\Method\PD122024CLP.M
Quant Title : GC Extractables
QLast Update : Fri Dec 20 23:32:53 2024
Response via : Initial Calibration
Integrator: ChemStation

Volume Inj. : 1 µl
Signal #1 Phase : ZB-MR1 Signal #2 Phase: ZB-MR2
Signal #1 Info : 30M x 0.32mm x 0.5 Signal #2 Info : 30M x 0.32mm x 0.25µm



(18) Endrin aldehyde (B)
6.924min 2.899 ng/ml m
response 6804450

(18) Endrin aldehyde #2 (B)
6.280min 1.834 ng/ml m
response 19165217

Data Path : Z:\pestpcbsrv\HPCHEM1\ECD_D\Data\PD122324\
 Data File : PD087291.D
 Signal(s) : Signal #1: ECD1A.ch Signal #2: ECD2B.ch
 Acq On : 23 Dec 2024 11:46
 Operator : AR\AJ
 Sample : P5267-02
 Misc :
 ALS Vial : 8 Sample Multiplier: 1

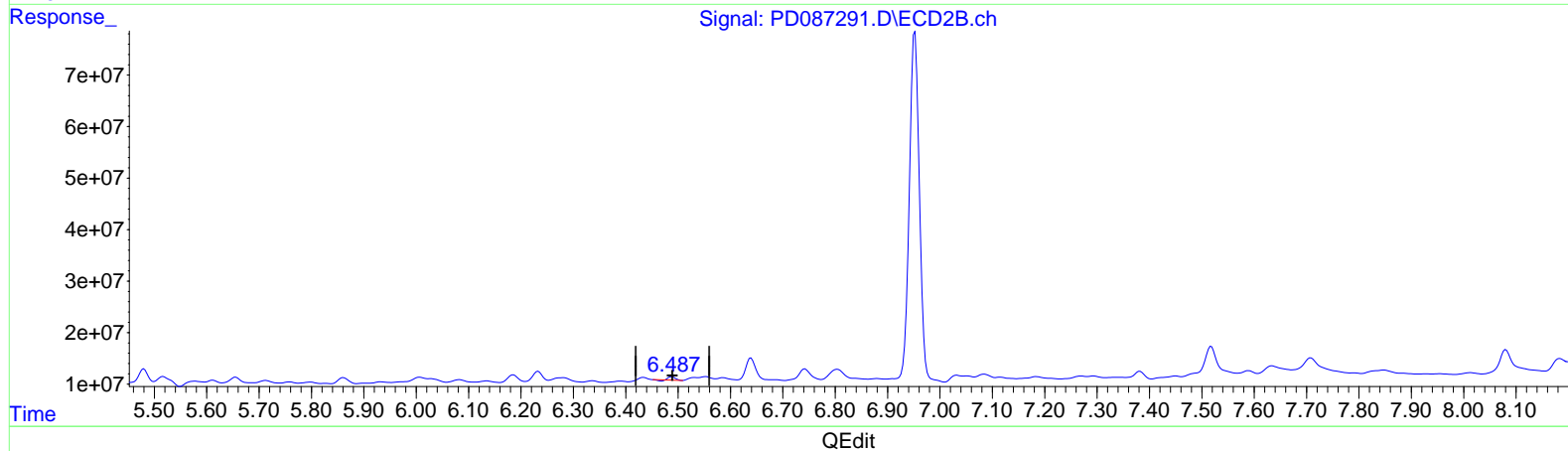
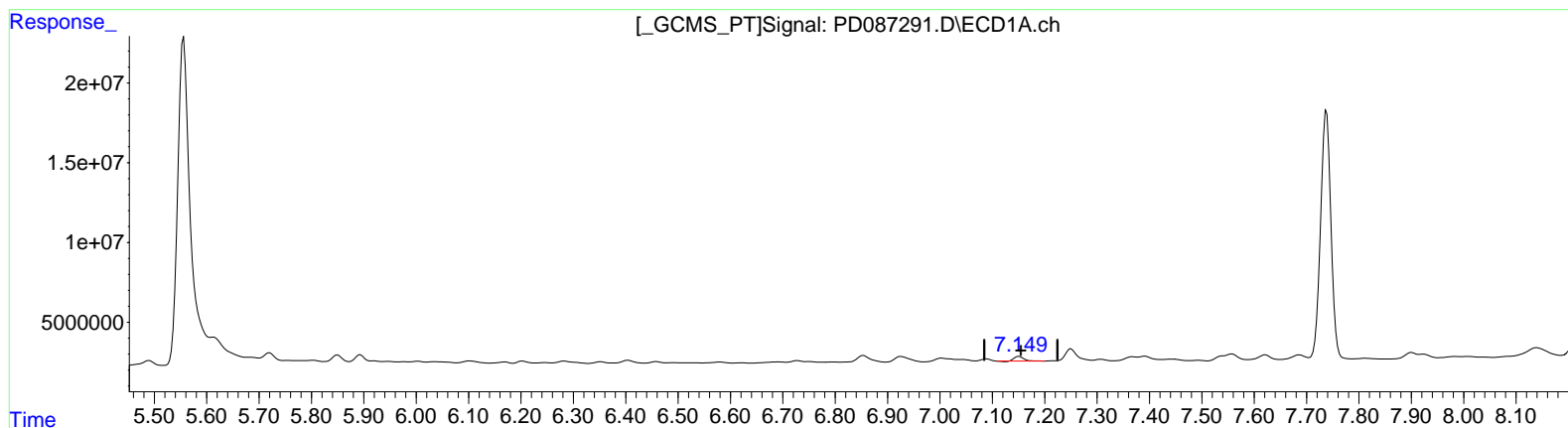
Instrument :
 ECD_D
 ClientSampleId :
 E28Z0

Manual Integrations APPROVED

Reviewed By : Abdul Mirza 12/26/2024
 Supervised By : Ankita Jodhani 12/27/2024

Integration File signal 1: autoint1.e
 Integration File signal 2: autoint2.e
 Quant Time: Dec 23 23:58:43 2024
 Quant Method : Z:\pestpcbsrv\HPCHEM1\ECD_D\Method\PD122024CLP.M
 Quant Title : GC Extractables
 QLast Update : Fri Dec 20 23:32:53 2024
 Response via : Initial Calibration
 Integrator: ChemStation

Volume Inj. : 1 µl
 Signal #1 Phase : ZB-MR1 Signal #2 Phase: ZB-MR2
 Signal #1 Info : 30M x 0.32mm x 0.5 Signal #2 Info : 30M x 0.32mm x 0.25µm



(19) Endosulfan Sulfate (B)
 7.151min 1.195 ng/ml
 response 3464670

(19) Endosulfan Sulfate #2 (B)
 6.488min 0.351 ng/ml
 response 4641747

Data Path : Z:\pestpcbsrv\HPCHEM1\ECD_D\Data\PD122324\
Data File : PD087291.D
Signal(s) : Signal #1: ECD1A.ch Signal #2: ECD2B.ch
Acq On : 23 Dec 2024 11:46
Operator : AR\AJ
Sample : P5267-02
Misc :
ALS Vial : 8 Sample Multiplier: 1

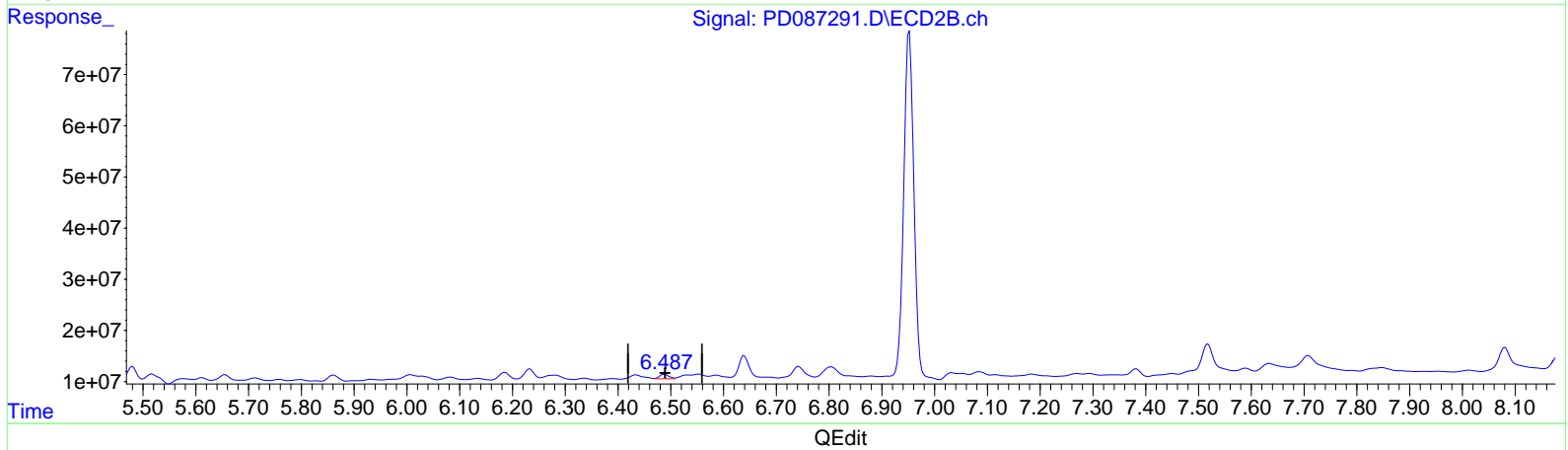
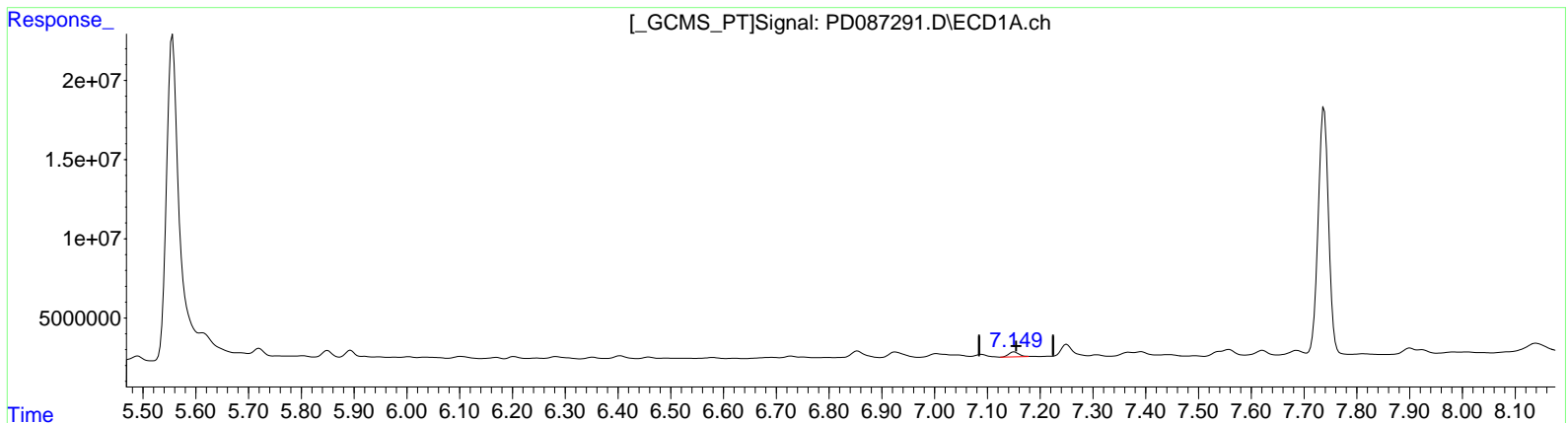
Instrument :
ECD_D
ClientSampleId :
E28Z0

Manual Integrations APPROVED

Reviewed By : Abdul Mirza 12/26/2024
Supervised By : Ankita Jodhani 12/27/2024

Integration File signal 1: autoint1.e
Integration File signal 2: autoint2.e
Quant Time: Dec 23 23:58:43 2024
Quant Method : Z:\pestpcbsrv\HPCHEM1\ECD_D\Method\PD122024CLP.M
Quant Title : GC Extractables
QLast Update : Fri Dec 20 23:32:53 2024
Response via : Initial Calibration
Integrator: ChemStation

Volume Inj. : 1 µl
Signal #1 Phase : ZB-MR1 Signal #2 Phase: ZB-MR2
Signal #1 Info : 30M x 0.32mm x 0.5 Signal #2 Info : 30M x 0.32mm x 0.25µm



(19) Endosulfan Sulfate (B)
7.149min 1.482 ng/ml m
response 4296096

(19) Endosulfan Sulfate #2 (B)
6.487min 0.840 ng/ml m
response 11101809

Data Path : Z:\pestpcbsrv\HPCHEM1\ECD_D\Data\PD122324\
 Data File : PD087291.D
 Signal(s) : Signal #1: ECD1A.ch Signal #2: ECD2B.ch
 Acq On : 23 Dec 2024 11:46
 Operator : AR\AJ
 Sample : P5267-02
 Misc :
 ALS Vial : 8 Sample Multiplier: 1

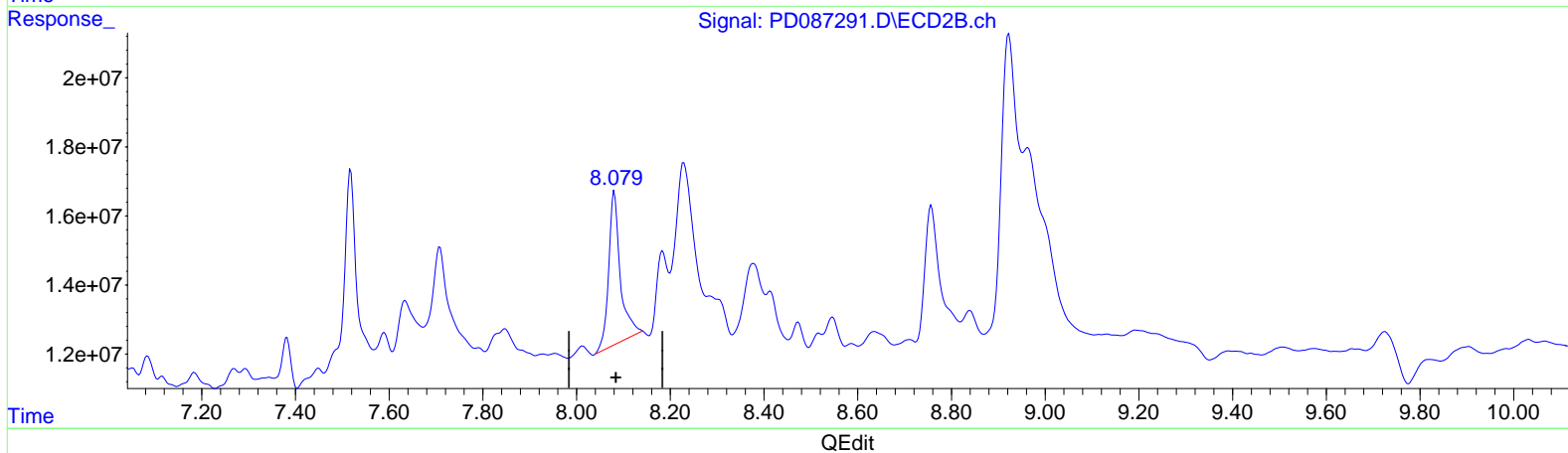
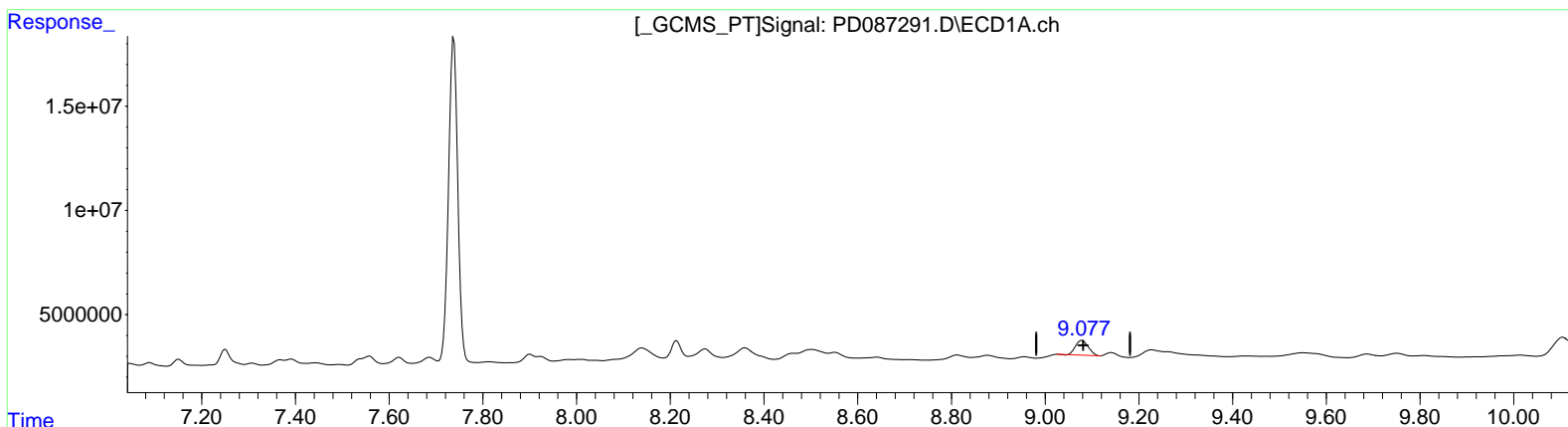
Instrument :
 ECD_D
 ClientSampleId :
 E28Z0

Manual Integrations APPROVED

Reviewed By : Abdul Mirza 12/26/2024
 Supervised By : Ankita Jodhani 12/27/2024

Integration File signal 1: autoint1.e
 Integration File signal 2: autoint2.e
 Quant Time: Dec 23 23:58:43 2024
 Quant Method : Z:\pestpcbsrv\HPCHEM1\ECD_D\Method\PD122024CLP.M
 Quant Title : GC Extractables
 QLast Update : Fri Dec 20 23:32:53 2024
 Response via : Initial Calibration
 Integrator: ChemStation

Volume Inj. : 1 µl
 Signal #1 Phase : ZB-MR1 Signal #2 Phase: ZB-MR2
 Signal #1 Info : 30M x 0.32mm x 0.5 Signal #2 Info : 30M x 0.32mm x 0.25µm



(27) Decachlorobiphenyl (SA)

9.079min 4.341 ng/ml
 response 13259154

(27) Decachlorobiphenyl #2 (SA)

8.081min 5.882 ng/ml
 response 77477683

Data Path : Z:\pestpcbsrv\HPCHEM1\ECD_D\Data\PD122324\
 Data File : PD087291.D
 Signal(s) : Signal #1: ECD1A.ch Signal #2: ECD2B.ch
 Acq On : 23 Dec 2024 11:46
 Operator : AR\AJ
 Sample : P5267-02
 Misc :
 ALS Vial : 8 Sample Multiplier: 1

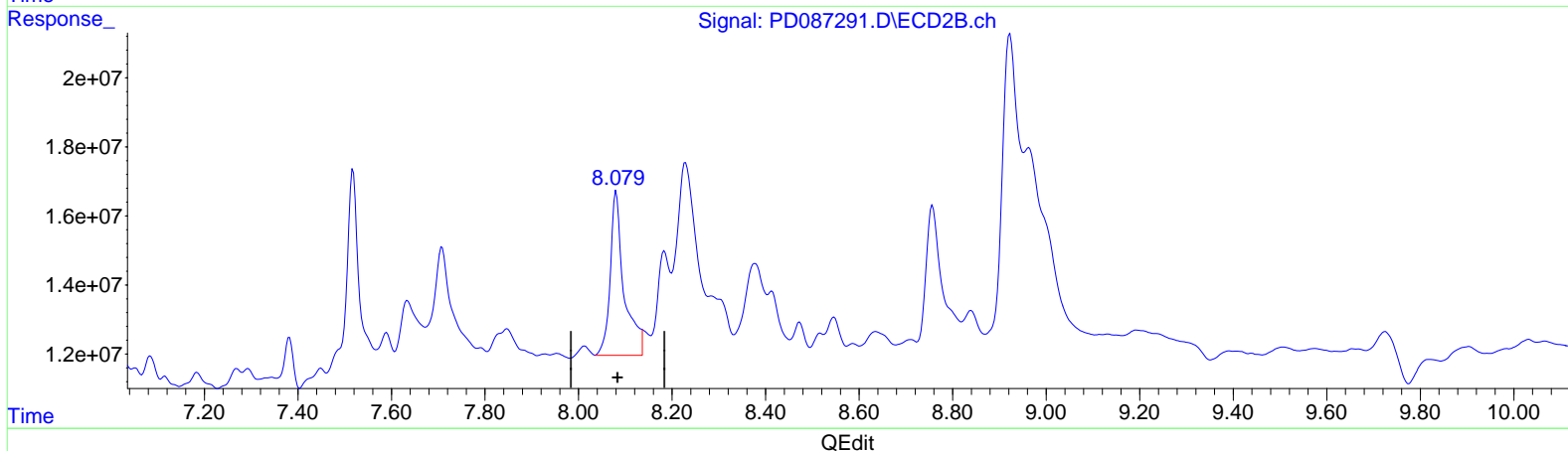
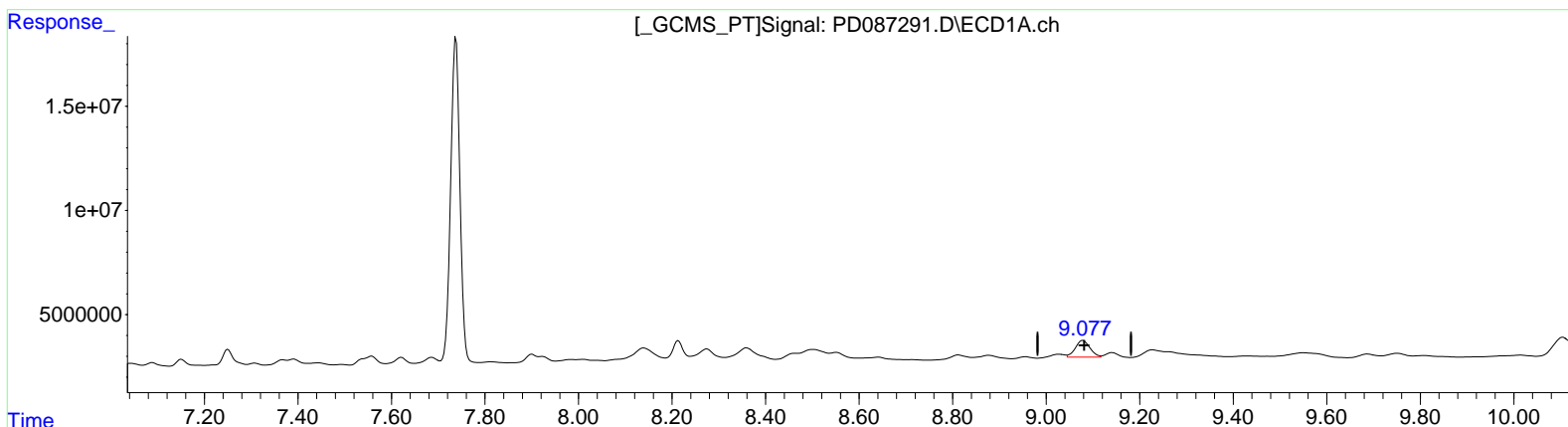
Instrument :
 ECD_D
 ClientSampleId :
 E28Z0

Manual Integrations APPROVED

Reviewed By : Abdul Mirza 12/26/2024
 Supervised By : Ankita Jodhani 12/27/2024

Integration File signal 1: autoint1.e
 Integration File signal 2: autoint2.e
 Quant Time: Dec 23 23:58:43 2024
 Quant Method : Z:\pestpcbsrv\HPCHEM1\ECD_D\Method\PD122024CLP.M
 Quant Title : GC Extractables
 QLast Update : Fri Dec 20 23:32:53 2024
 Response via : Initial Calibration
 Integrator: ChemStation

Volume Inj. : 1 µl
 Signal #1 Phase : ZB-MR1 Signal #2 Phase: ZB-MR2
 Signal #1 Info : 30M x 0.32mm x 0.5 Signal #2 Info : 30M x 0.32mm x 0.25µm



(27) Decachlorobiphenyl (SA)
 9.077min 5.742 ng/ml m
 response 17536063

(27) Decachlorobiphenyl #2 (SA)
 8.079min 7.458 ng/ml m
 response 98249921