

Data Path : Z:\pestpcbsrv\HPCHEM1\ECD\_D\Data\PD122324\  
 Data File : PD087298.D  
 Signal(s) : Signal #1: ECD1A.ch Signal #2: ECD2B.ch  
 Acq On : 23 Dec 2024 13:24  
 Operator : AR\AJ  
 Sample : P5267-09MSD  
 Misc :  
 ALS Vial : 15 Sample Multiplier: 1

**Instrument :**

ECD\_D

**ClientSampleId :**

E28Y9MSD

**Manual IntegrationsAPPROVED**

Reviewed By :Abdul

Mirza

12/26/2024

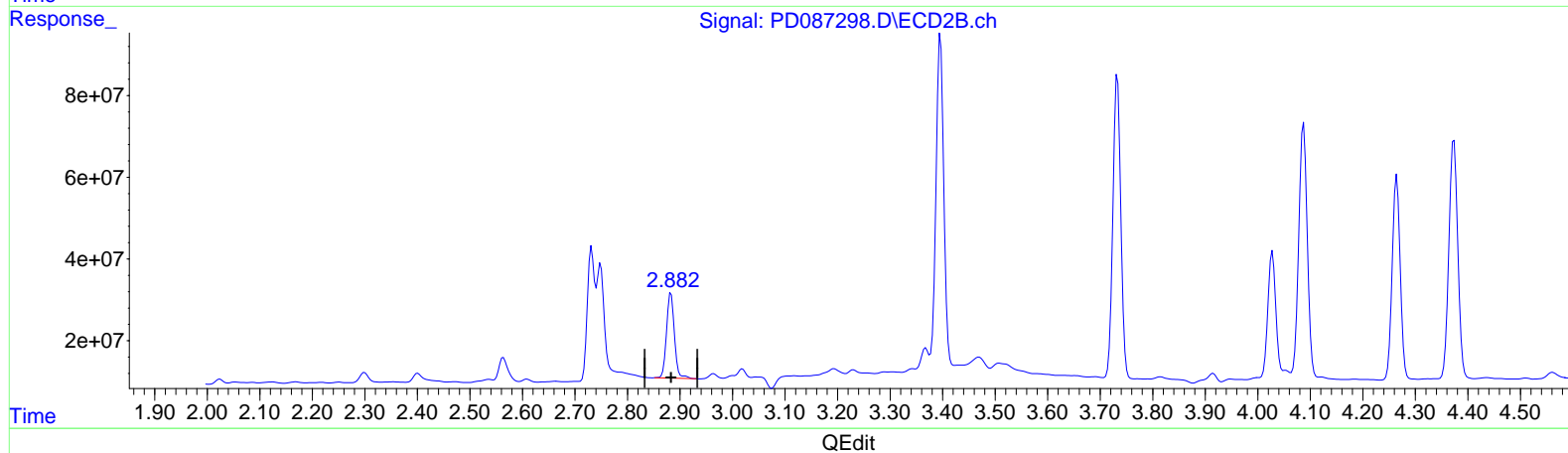
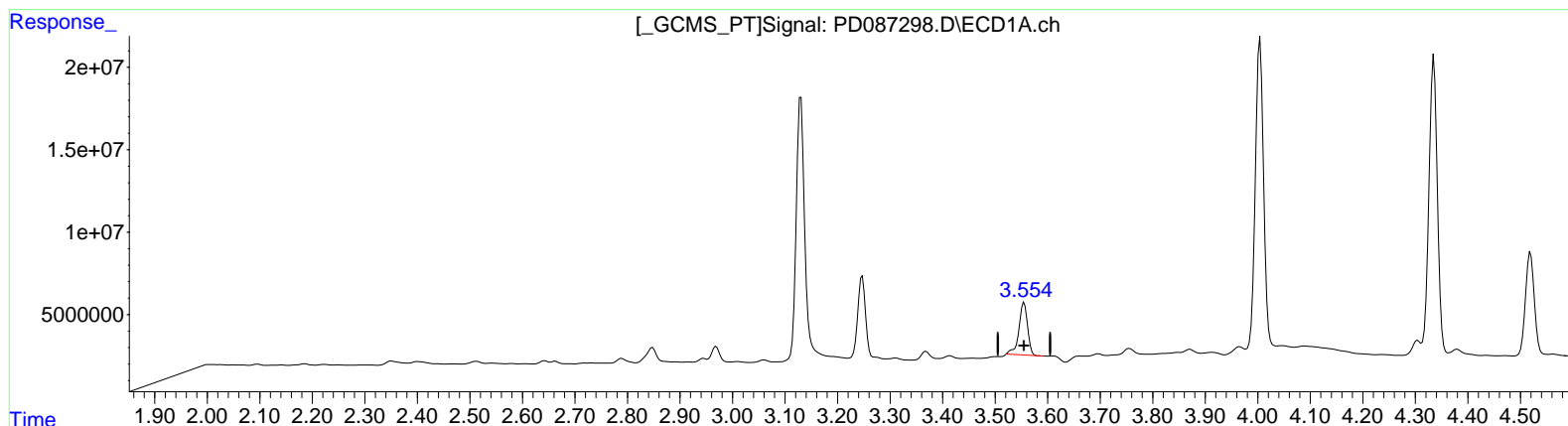
Supervised By :Ankita

Jodhani

12/27/2024

Integration File signal 1: autoint1.e  
 Integration File signal 2: autoint2.e  
 Quant Time: Dec 24 00:00:42 2024  
 Quant Method : Z:\pestpcbsrv\HPCHEM1\ECD\_D\Method\PD122024CLP.M  
 Quant Title : GC Extractables  
 QLast Update : Fri Dec 20 23:32:53 2024  
 Response via : Initial Calibration  
 Integrator: ChemStation

Volume Inj. : 1 µl  
 Signal #1 Phase : ZB-MR1 Signal #2 Phase: ZB-MR2  
 Signal #1 Info : 30M x 0.32mm x0.5 Signal #2 Info : 30M x 0.32mm x 0.25µm



(1) Tetrachloro-m-xylene (SA)

3.555min 17.708 ng/ml

response 36255224

(1) Tetrachloro-m-xylene #2 (SA)

2.883min 18.778 ng/ml

response 218523152

Data Path : Z:\pestpcbsrv\HPCHEM1\ECD\_D\Data\PD122324\  
 Data File : PD087298.D  
 Signal(s) : Signal #1: ECD1A.ch Signal #2: ECD2B.ch  
 Acq On : 23 Dec 2024 13:24  
 Operator : AR\AJ  
 Sample : P5267-09MSD  
 Misc :  
 ALS Vial : 15 Sample Multiplier: 1

Instrument :  
 ECD\_D  
 ClientSampleId :  
 E28Y9MSD

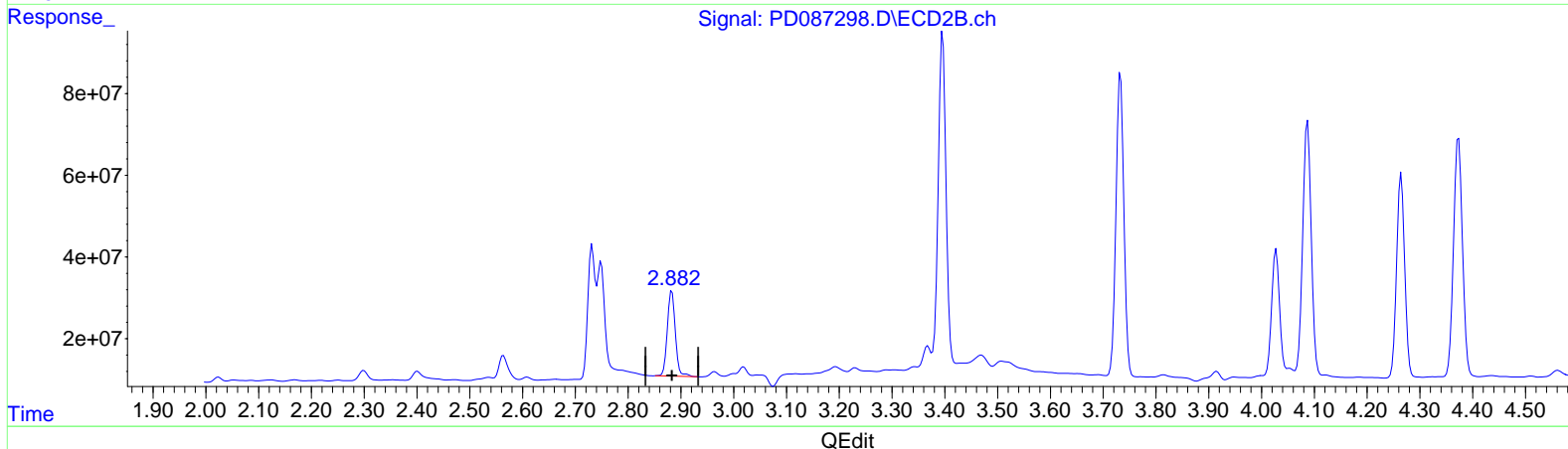
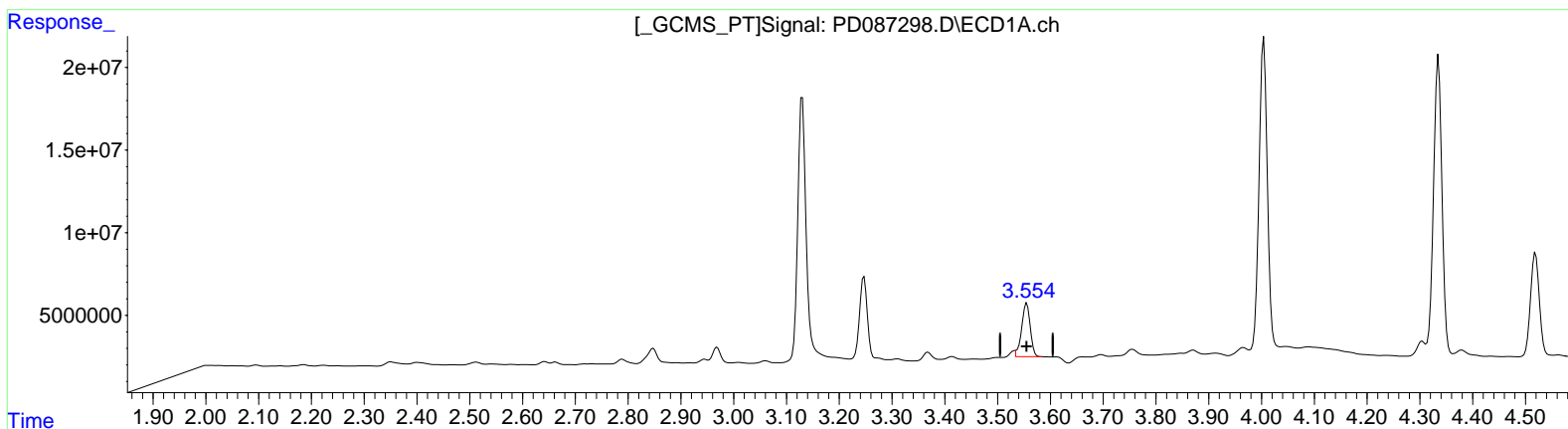
Manual Integrations APPROVED

Reviewed By : Abdul  
 Mirza  
 12/26/2024

Supervised By : Ankita  
 Jodhani  
 12/27/2024

Integration File signal 1: autoint1.e  
 Integration File signal 2: autoint2.e  
 Quant Time: Dec 24 00:00:42 2024  
 Quant Method : Z:\pestpcbsrv\HPCHEM1\ECD\_D\Method\PD122024CLP.M  
 Quant Title : GC Extractables  
 QLast Update : Fri Dec 20 23:32:53 2024  
 Response via : Initial Calibration  
 Integrator: ChemStation

Volume Inj. : 1 µl  
 Signal #1 Phase : ZB-MR1 Signal #2 Phase: ZB-MR2  
 Signal #1 Info : 30M x 0.32mm x 0.5 Signal #2 Info : 30M x 0.32mm x 0.25µm



(1) Tetrachloro-m-xylene (SA)  
 3.554min 17.699 ng/ml m  
 response 36236246

(1) Tetrachloro-m-xylene #2 (SA)  
 2.883min 18.778 ng/ml  
 response 218523152

Data Path : Z:\pestpcbsrv\HPCHEM1\ECD\_D\Data\PD122324\  
 Data File : PD087298.D  
 Signal(s) : Signal #1: ECD1A.ch Signal #2: ECD2B.ch  
 Acq On : 23 Dec 2024 13:24  
 Operator : AR\AJ  
 Sample : P5267-09MSD  
 Misc :  
 ALS Vial : 15 Sample Multiplier: 1

**Instrument :**

ECD\_D

**ClientSampleId :**

E28Y9MSD

**Manual IntegrationsAPPROVED**

Reviewed By :Abdul

Mirza

12/26/2024

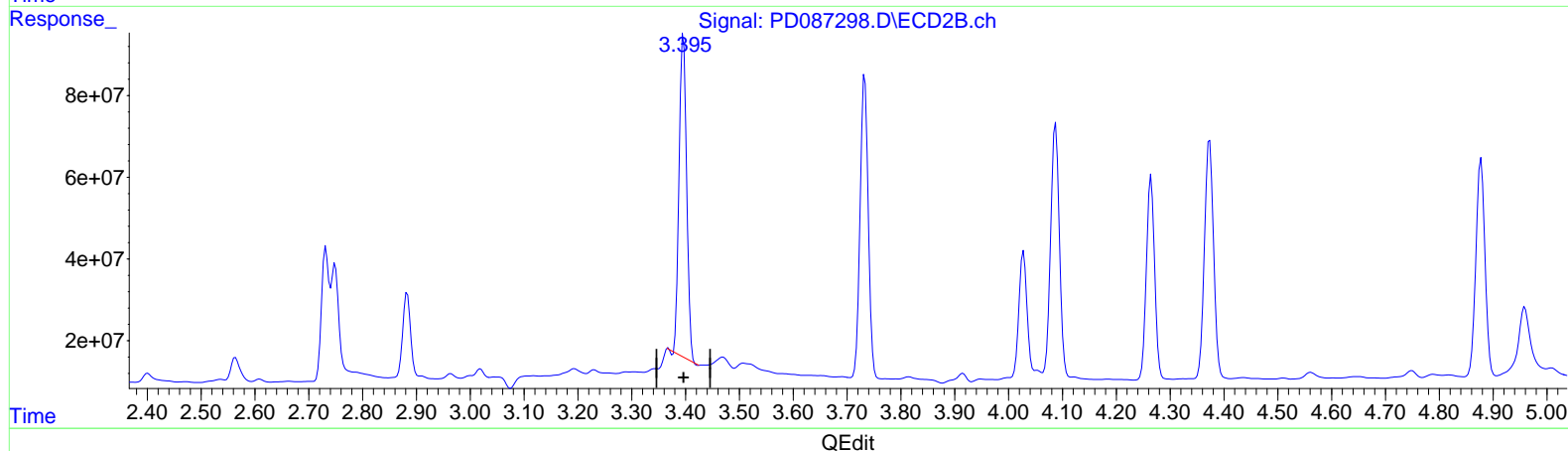
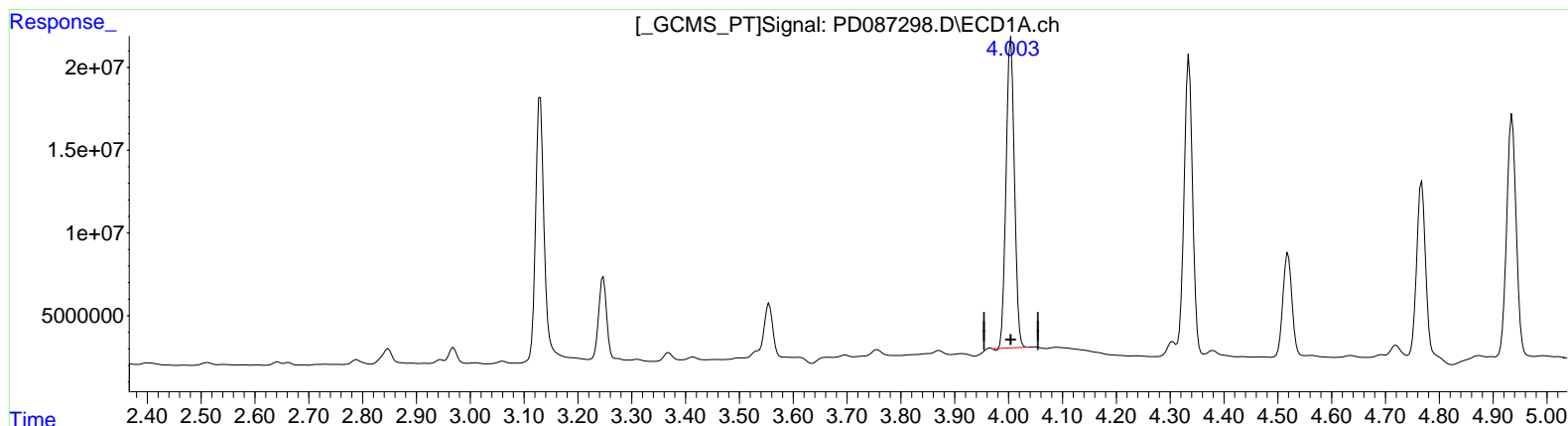
Supervised By :Ankita

Jodhani

12/27/2024

Integration File signal 1: autoint1.e  
 Integration File signal 2: autoint2.e  
 Quant Time: Dec 24 00:00:42 2024  
 Quant Method : Z:\pestpcbsrv\HPCHEM1\ECD\_D\Method\PD122024CLP.M  
 Quant Title : GC Extractables  
 QLast Update : Fri Dec 20 23:32:53 2024  
 Response via : Initial Calibration  
 Integrator: ChemStation

Volume Inj. : 1 µl  
 Signal #1 Phase : ZB-MR1 Signal #2 Phase: ZB-MR2  
 Signal #1 Info : 30M x 0.32mm x0.5 Signal #2 Info : 30M x 0.32mm x 0.25µm



(2) alpha-BHC (A)  
 4.004min 49.842 ng/ml  
 response 201096143

(2) alpha-BHC #2 (A)  
 3.396min 42.387 ng/ml  
 response 772625777

Data Path : Z:\pestpcbsrv\HPCHEM1\ECD\_D\Data\PD122324\  
 Data File : PD087298.D  
 Signal(s) : Signal #1: ECD1A.ch Signal #2: ECD2B.ch  
 Acq On : 23 Dec 2024 13:24  
 Operator : AR\AJ  
 Sample : P5267-09MSD  
 Misc :  
 ALS Vial : 15 Sample Multiplier: 1

Instrument :  
 ECD\_D  
 ClientSampleId :  
 E28Y9MSD

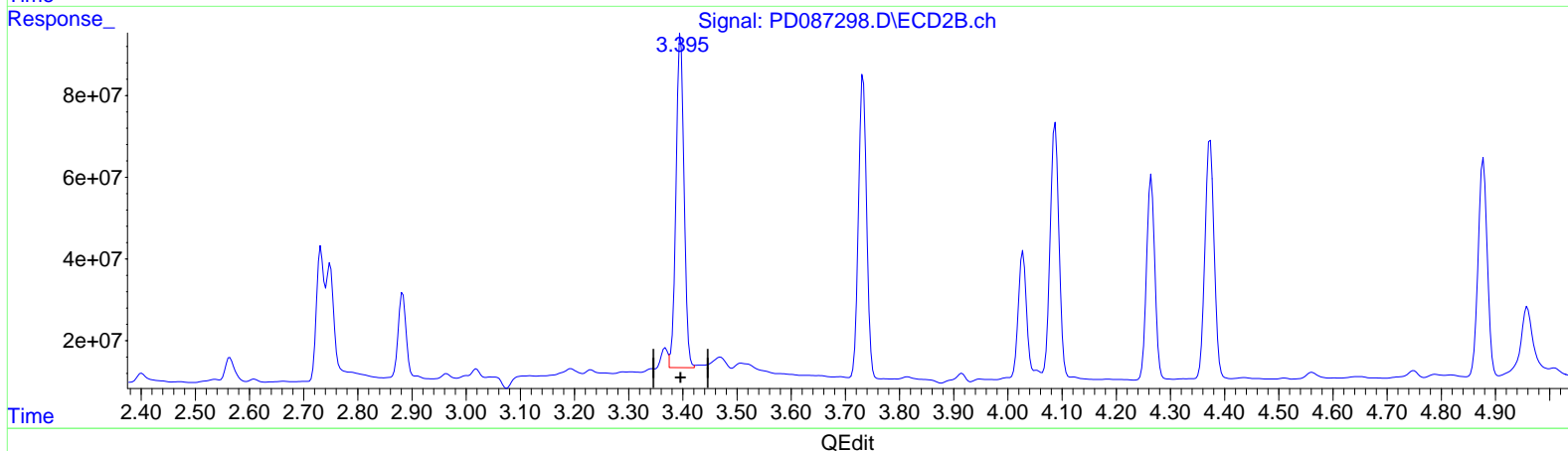
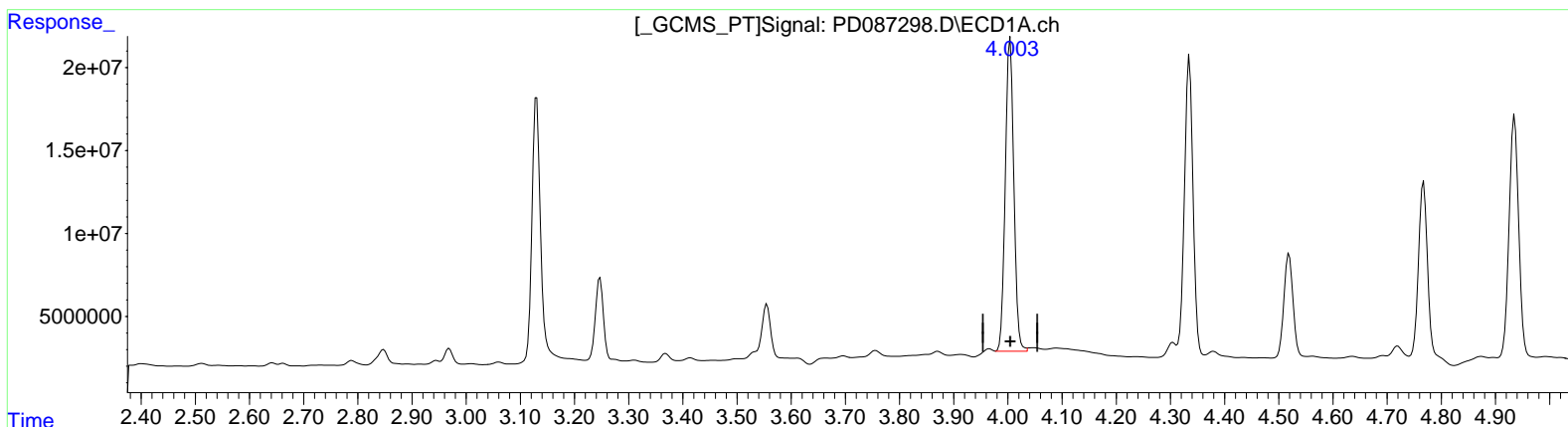
Manual Integrations APPROVED

Reviewed By : Abdul  
 Mirza  
 12/26/2024

Supervised By : Ankita  
 Jodhani  
 12/27/2024

Integration File signal 1: autoint1.e  
 Integration File signal 2: autoint2.e  
 Quant Time: Dec 24 00:00:42 2024  
 Quant Method : Z:\pestpcbsrv\HPCHEM1\ECD\_D\Method\PD122024CLP.M  
 Quant Title : GC Extractables  
 QLast Update : Fri Dec 20 23:32:53 2024  
 Response via : Initial Calibration  
 Integrator: ChemStation

Volume Inj. : 1 µl  
 Signal #1 Phase : ZB-MR1 Signal #2 Phase: ZB-MR2  
 Signal #1 Info : 30M x 0.32mm x 0.5 Signal #2 Info : 30M x 0.32mm x 0.25µm



(2) alpha-BHC (A)  
 4.003min 51.312 ng/ml m  
 response 207026842

(2) alpha-BHC #2 (A)  
 3.395min 46.053 ng/ml m  
 response 839450832

Data Path : Z:\pestpcbsrv\HPCHEM1\ECD\_D\Data\PD122324\  
 Data File : PD087298.D  
 Signal(s) : Signal #1: ECD1A.ch Signal #2: ECD2B.ch  
 Acq On : 23 Dec 2024 13:24  
 Operator : AR\AJ  
 Sample : P5267-09MSD  
 Misc :  
 ALS Vial : 15 Sample Multiplier: 1

**Instrument :**

ECD\_D

**ClientSampleId :**

E28Y9MSD

**Manual IntegrationsAPPROVED**

Reviewed By :Abdul

Mirza

12/26/2024

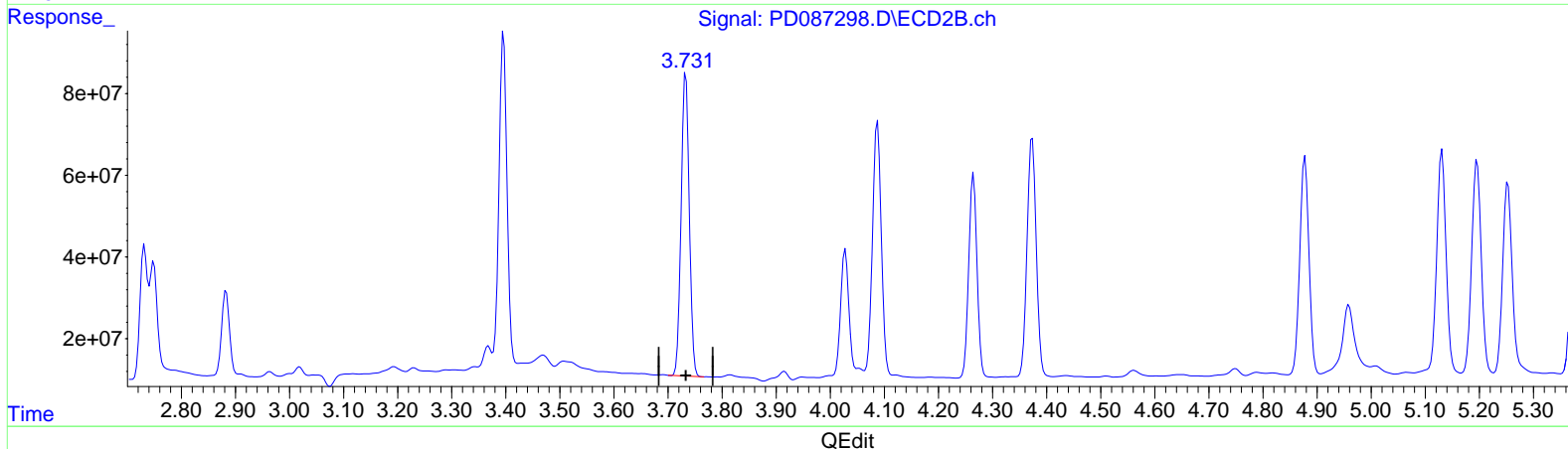
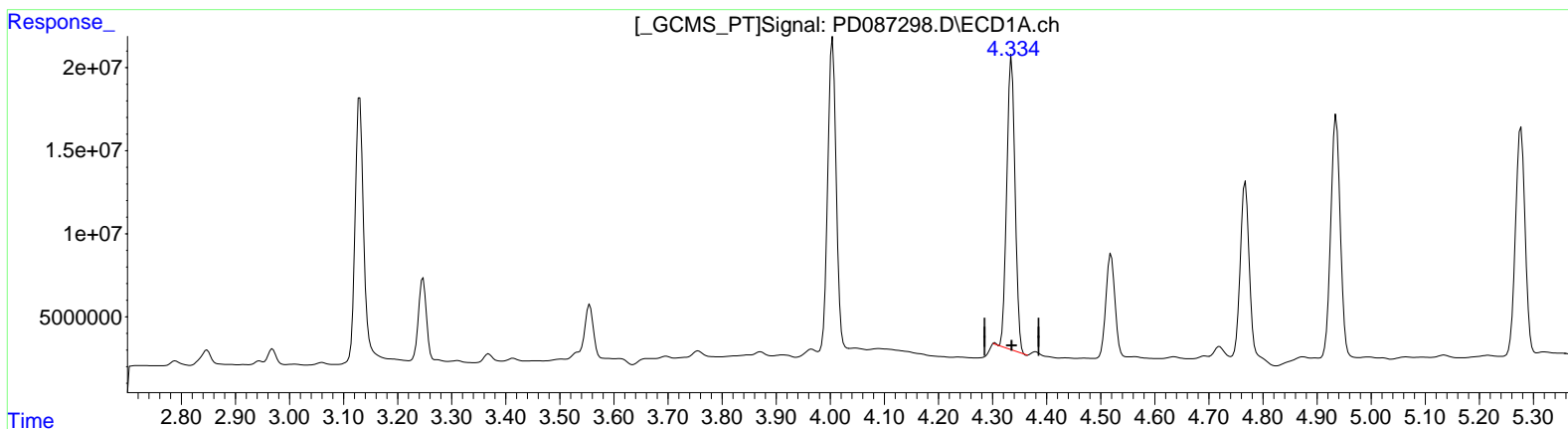
Supervised By :Ankita

Jodhani

12/27/2024

Integration File signal 1: autoint1.e  
 Integration File signal 2: autoint2.e  
 Quant Time: Dec 24 00:00:42 2024  
 Quant Method : Z:\pestpcbsrv\HPCHEM1\ECD\_D\Method\PD122024CLP.M  
 Quant Title : GC Extractables  
 QLast Update : Fri Dec 20 23:32:53 2024  
 Response via : Initial Calibration  
 Integrator: ChemStation

Volume Inj. : 1 µl  
 Signal #1 Phase : ZB-MR1 Signal #2 Phase: ZB-MR2  
 Signal #1 Info : 30M x 0.32mm x0.5 Signal #2 Info : 30M x 0.32mm x 0.25µm



(3) gamma-BHC (Lindane) (MA)

4.335min 48.455 ng/ml

response 189245333

(3) gamma-BHC (Lindane) #2 (MA)

3.733min 45.815 ng/ml

response 775150256

Data Path : Z:\pestpcbsrv\HPCHEM1\ECD\_D\Data\PD122324\  
 Data File : PD087298.D  
 Signal(s) : Signal #1: ECD1A.ch Signal #2: ECD2B.ch  
 Acq On : 23 Dec 2024 13:24  
 Operator : AR\AJ  
 Sample : P5267-09MSD  
 Misc :  
 ALS Vial : 15 Sample Multiplier: 1

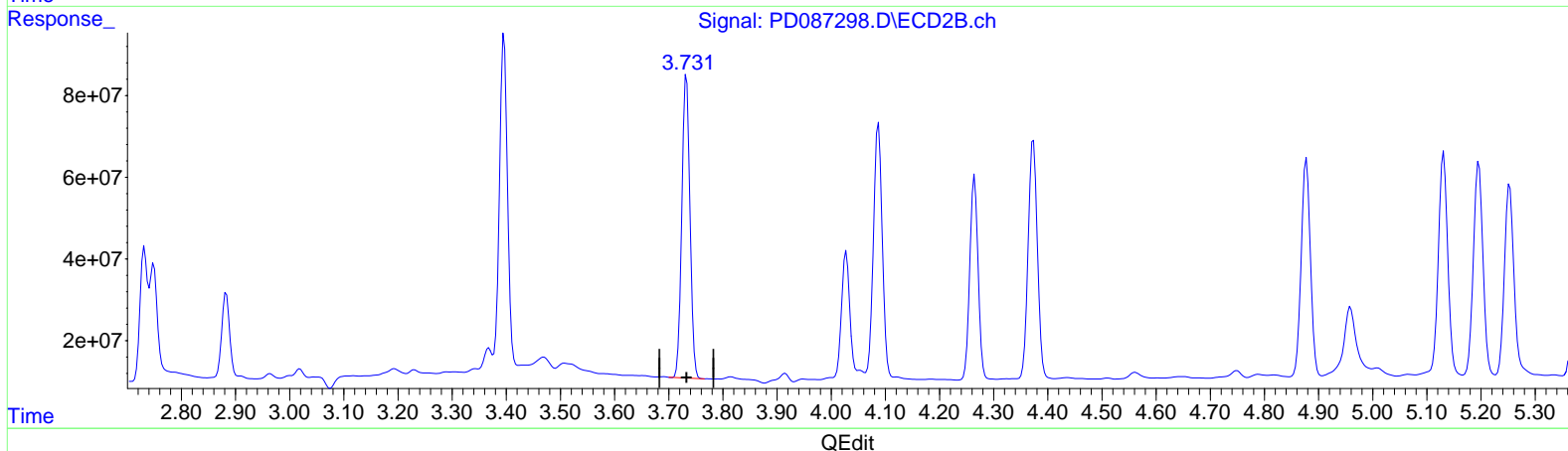
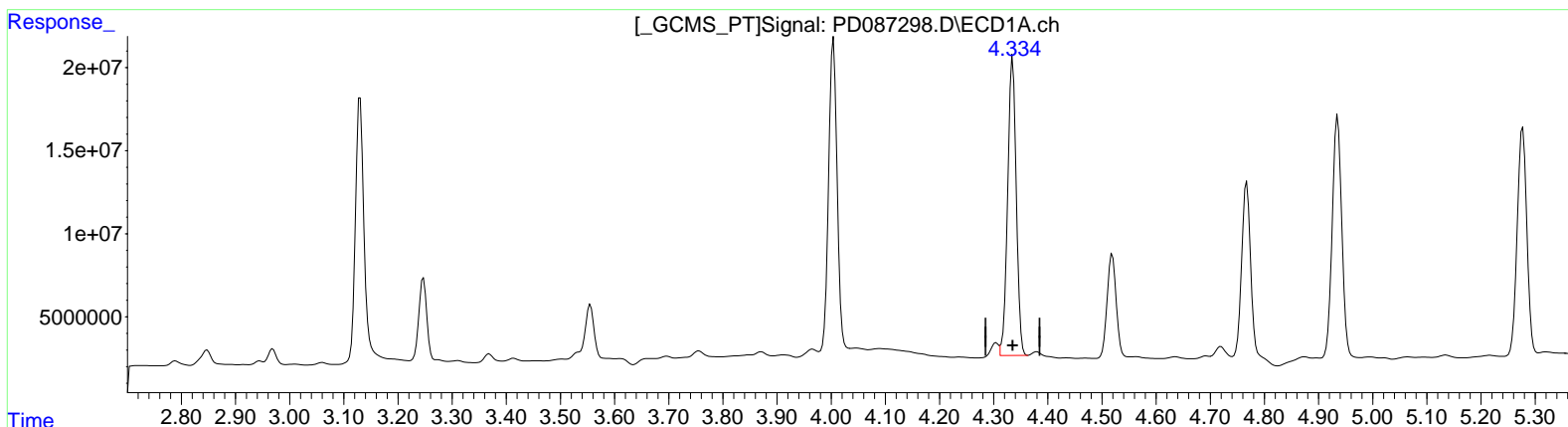
Instrument :  
 ECD\_D  
 ClientSampleId :  
 E28Y9MSD

Manual Integrations APPROVED

Reviewed By : Abdul  
 Mirza  
 12/26/2024  
 Supervised By : Ankita  
 Jodhani  
 12/27/2024

Integration File signal 1: autoint1.e  
 Integration File signal 2: autoint2.e  
 Quant Time: Dec 24 00:00:42 2024  
 Quant Method : Z:\pestpcbsrv\HPCHEM1\ECD\_D\Method\PD122024CLP.M  
 Quant Title : GC Extractables  
 QLast Update : Fri Dec 20 23:32:53 2024  
 Response via : Initial Calibration  
 Integrator: ChemStation

Volume Inj. : 1 µl  
 Signal #1 Phase : ZB-MR1 Signal #2 Phase: ZB-MR2  
 Signal #1 Info : 30M x 0.32mm x 0.5 Signal #2 Info : 30M x 0.32mm x 0.25µm



(3) gamma-BHC (Lindane) (MA)

4.334min 50.693 ng/ml m

response 197986849

(3) gamma-BHC (Lindane) #2 (MA)

3.733min 45.815 ng/ml

response 775150256

Data Path : Z:\pestpcbsrv\HPCHEM1\ECD\_D\Data\PD122324\  
 Data File : PD087298.D  
 Signal(s) : Signal #1: ECD1A.ch Signal #2: ECD2B.ch  
 Acq On : 23 Dec 2024 13:24  
 Operator : AR\AJ  
 Sample : P5267-09MSD  
 Misc :  
 ALS Vial : 15 Sample Multiplier: 1

**Instrument :**

ECD\_D

**ClientSampleId :**

E28Y9MSD

**Manual IntegrationsAPPROVED**

Reviewed By :Abdul

Mirza

12/26/2024

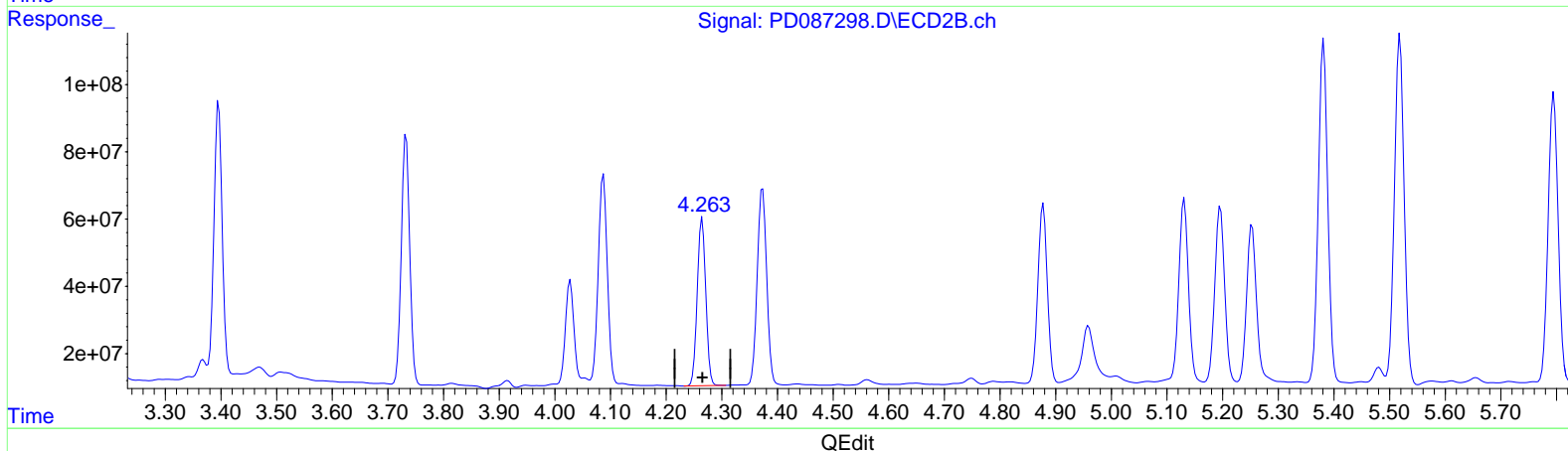
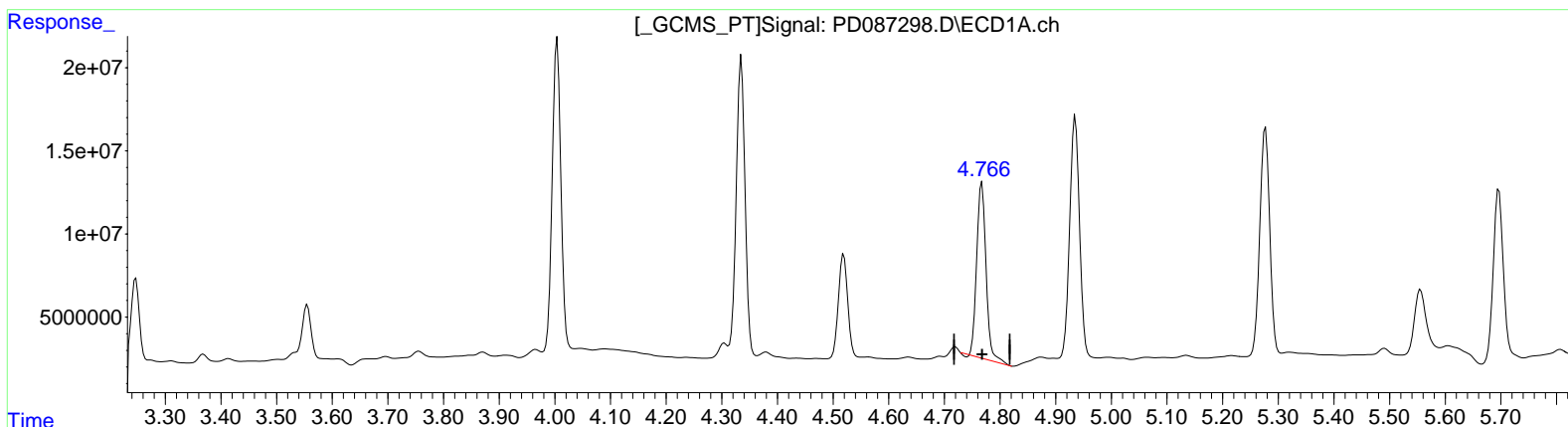
Supervised By :Ankita

Jodhani

12/27/2024

Integration File signal 1: autoint1.e  
 Integration File signal 2: autoint2.e  
 Quant Time: Dec 24 00:00:42 2024  
 Quant Method : Z:\pestpcbsrv\HPCHEM1\ECD\_D\Method\PD122024CLP.M  
 Quant Title : GC Extractables  
 QLast Update : Fri Dec 20 23:32:53 2024  
 Response via : Initial Calibration  
 Integrator: ChemStation

Volume Inj. : 1 µl  
 Signal #1 Phase : ZB-MR1 Signal #2 Phase: ZB-MR2  
 Signal #1 Info : 30M x 0.32mm x0.5 Signal #2 Info : 30M x 0.32mm x 0.25µm



(7) delta-BHC (B)  
 4.767min 30.733 ng/ml  
 response 122188091

(7) delta-BHC #2 (B)  
 4.265min 30.709 ng/ml  
 response 533144747

Data Path : Z:\pestpcbsrv\HPCHEM1\ECD\_D\Data\PD122324\  
 Data File : PD087298.D  
 Signal(s) : Signal #1: ECD1A.ch Signal #2: ECD2B.ch  
 Acq On : 23 Dec 2024 13:24  
 Operator : AR\AJ  
 Sample : P5267-09MSD  
 Misc :  
 ALS Vial : 15 Sample Multiplier: 1

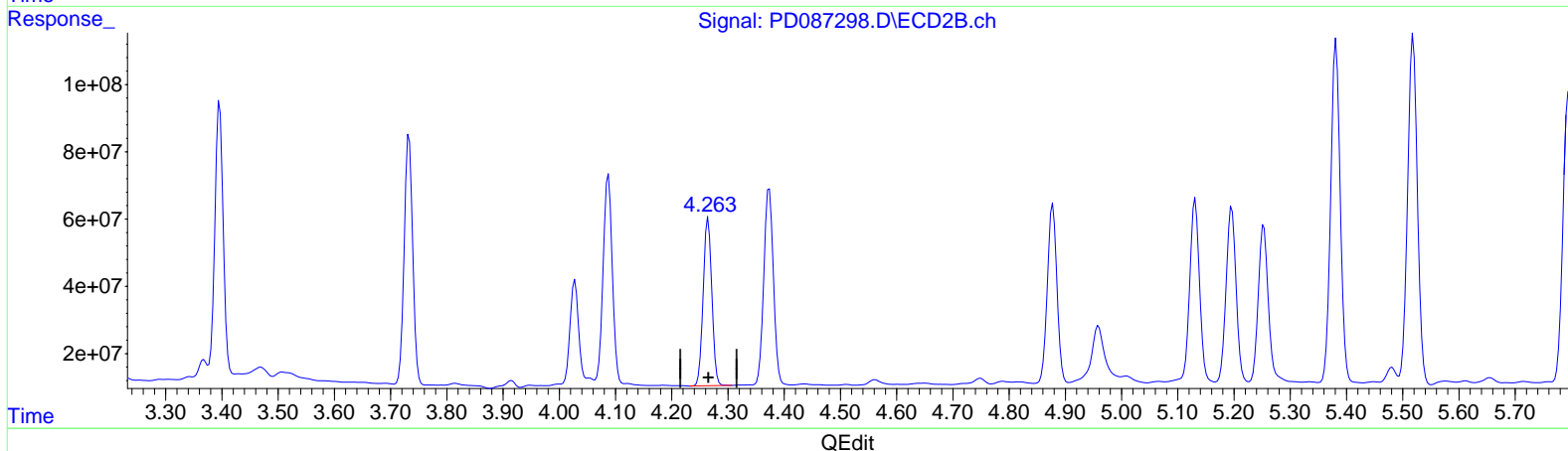
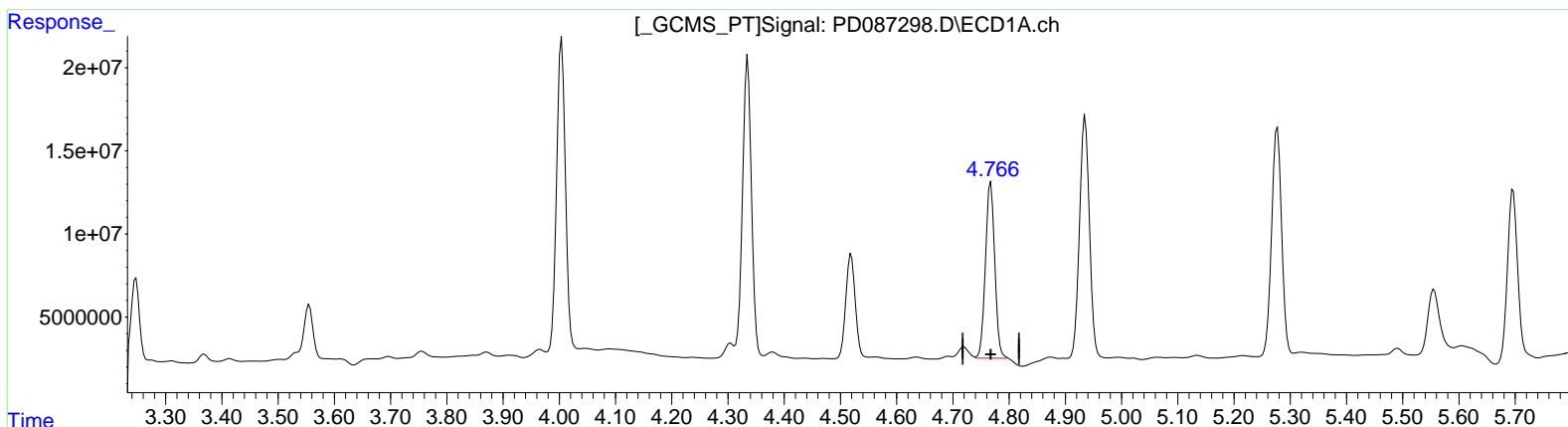
Instrument :  
 ECD\_D  
 ClientSampleId :  
 E28Y9MSD

Manual Integrations APPROVED

Reviewed By : Abdul  
 Mirza  
 12/26/2024  
 Supervised By : Ankita  
 Jodhani  
 12/27/2024

Integration File signal 1: autoint1.e  
 Integration File signal 2: autoint2.e  
 Quant Time: Dec 24 00:00:42 2024  
 Quant Method : Z:\pestpcbsrv\HPCHEM1\ECD\_D\Method\PD122024CLP.M  
 Quant Title : GC Extractables  
 QLast Update : Fri Dec 20 23:32:53 2024  
 Response via : Initial Calibration  
 Integrator: ChemStation

Volume Inj. : 1 µl  
 Signal #1 Phase : ZB-MR1 Signal #2 Phase: ZB-MR2  
 Signal #1 Info : 30M x 0.32mm x 0.5 Signal #2 Info : 30M x 0.32mm x 0.25µm



(7) delta-BHC (B)  
 4.766min 30.567 ng/ml m  
 response 121528630

(7) delta-BHC #2 (B)  
 4.265min 30.709 ng/ml  
 response 533144747



Data Path : Z:\pestpcbsrv\HPCHEM1\ECD\_D\Data\PD122324\  
 Data File : PD087298.D  
 Signal(s) : Signal #1: ECD1A.ch Signal #2: ECD2B.ch  
 Acq On : 23 Dec 2024 13:24  
 Operator : AR\AJ  
 Sample : P5267-09MSD  
 Misc :  
 ALS Vial : 15 Sample Multiplier: 1

**Instrument :**

ECD\_D

**ClientSampleId :**

E28Y9MSD

**Manual IntegrationsAPPROVED**

Reviewed By :Abdul

Mirza

12/26/2024

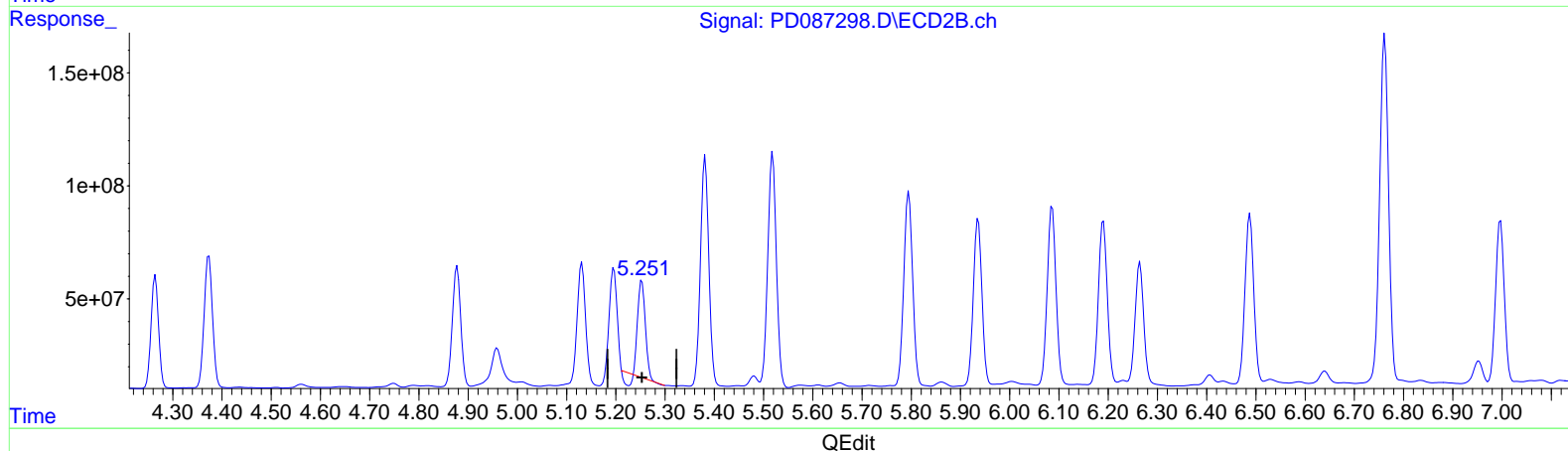
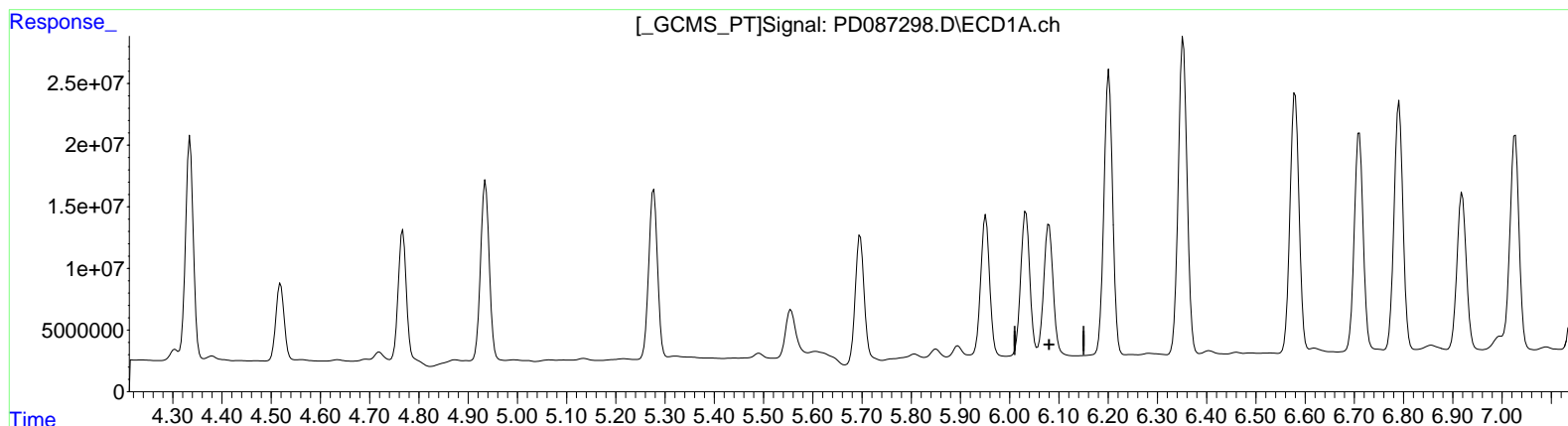
Supervised By :Ankita

Jodhani

12/27/2024

Integration File signal 1: autoint1.e  
 Integration File signal 2: autoint2.e  
 Quant Time: Dec 24 00:00:42 2024  
 Quant Method : Z:\pestpcbsrv\HPCHEM1\ECD\_D\Method\PD122024CLP.M  
 Quant Title : GC Extractables  
 QLast Update : Fri Dec 20 23:32:53 2024  
 Response via : Initial Calibration  
 Integrator: ChemStation

Volume Inj. : 1 µl  
 Signal #1 Phase : ZB-MR1 Signal #2 Phase: ZB-MR2  
 Signal #1 Info : 30M x 0.32mm x0.5 Signal #2 Info : 30M x 0.32mm x 0.25µm



(9) Endosulfan I (A)  
 6.080min -11.368 ng/ml  
 response -37974890

(9) Endosulfan I #2 (A)  
 5.253min 28.601 ng/ml  
 response 414546046

Data Path : Z:\pestpcbsrv\HPCHEM1\ECD\_D\Data\PD122324\  
 Data File : PD087298.D  
 Signal(s) : Signal #1: ECD1A.ch Signal #2: ECD2B.ch  
 Acq On : 23 Dec 2024 13:24  
 Operator : AR\AJ  
 Sample : P5267-09MSD  
 Misc :  
 ALS Vial : 15 Sample Multiplier: 1

**Instrument :**

ECD\_D

**ClientSampleId :**

E28Y9MSD

**Manual IntegrationsAPPROVED**

Reviewed By :Abdul

Mirza

12/26/2024

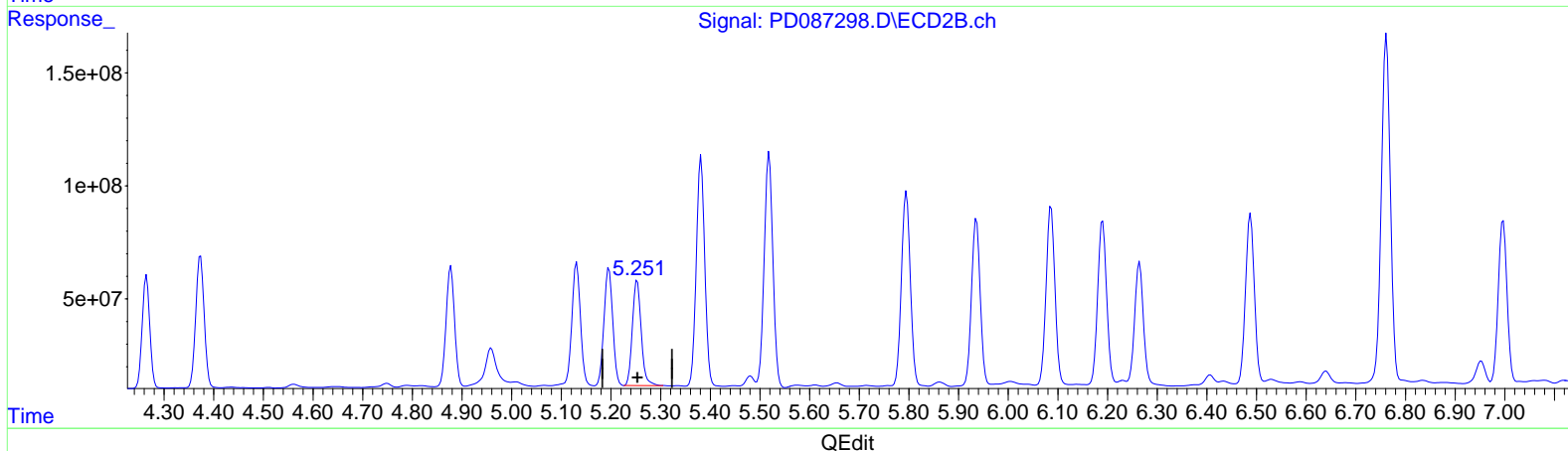
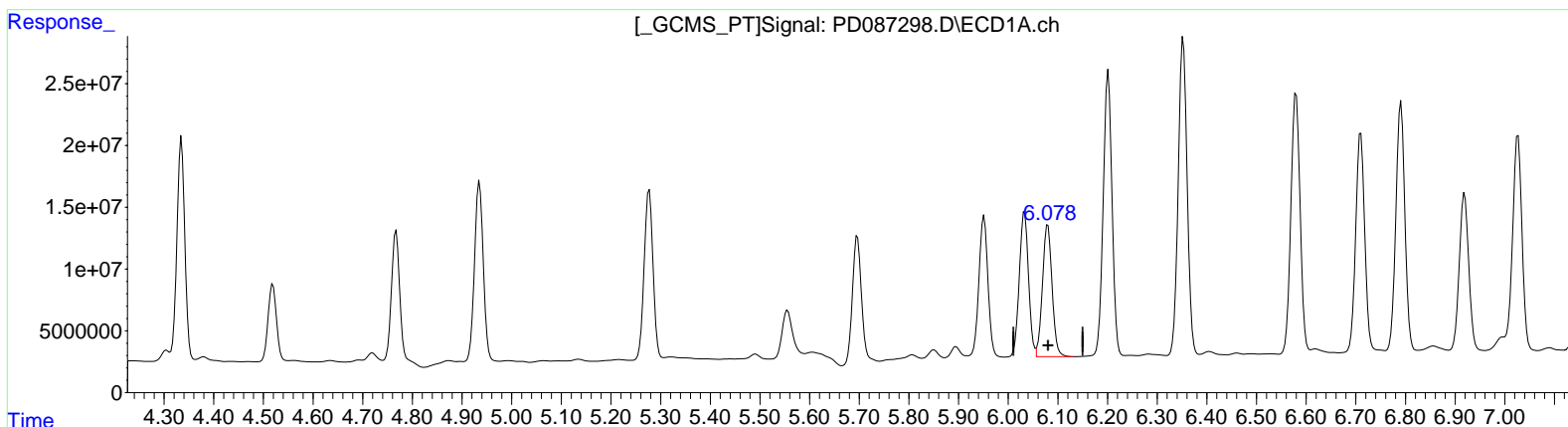
Supervised By :Ankita

Jodhani

12/27/2024

Integration File signal 1: autoint1.e  
 Integration File signal 2: autoint2.e  
 Quant Time: Dec 24 00:00:42 2024  
 Quant Method : Z:\pestpcbsrv\HPCHEM1\ECD\_D\Method\PD122024CLP.M  
 Quant Title : GC Extractables  
 QLast Update : Fri Dec 20 23:32:53 2024  
 Response via : Initial Calibration  
 Integrator: ChemStation

Volume Inj. : 1 µl  
 Signal #1 Phase : ZB-MR1 Signal #2 Phase: ZB-MR2  
 Signal #1 Info : 30M x 0.32mm x0.5 Signal #2 Info : 30M x 0.32mm x 0.25µm



(9) Endosulfan I (A)  
 6.078min 42.910 ng/ml m  
 response 143343546

(9) Endosulfan I #2 (A)  
 5.251min 39.540 ng/ml m  
 response 573096730

Data Path : Z:\pestpcbsrv\HPCHEM1\ECD\_D\Data\PD122324\  
 Data File : PD087298.D  
 Signal(s) : Signal #1: ECD1A.ch Signal #2: ECD2B.ch  
 Acq On : 23 Dec 2024 13:24  
 Operator : AR\AJ  
 Sample : P5267-09MSD  
 Misc :  
 ALS Vial : 15 Sample Multiplier: 1

**Instrument :**

ECD\_D

**ClientSampleId :**

E28Y9MSD

**Manual IntegrationsAPPROVED**

Reviewed By :Abdul

Mirza

12/26/2024

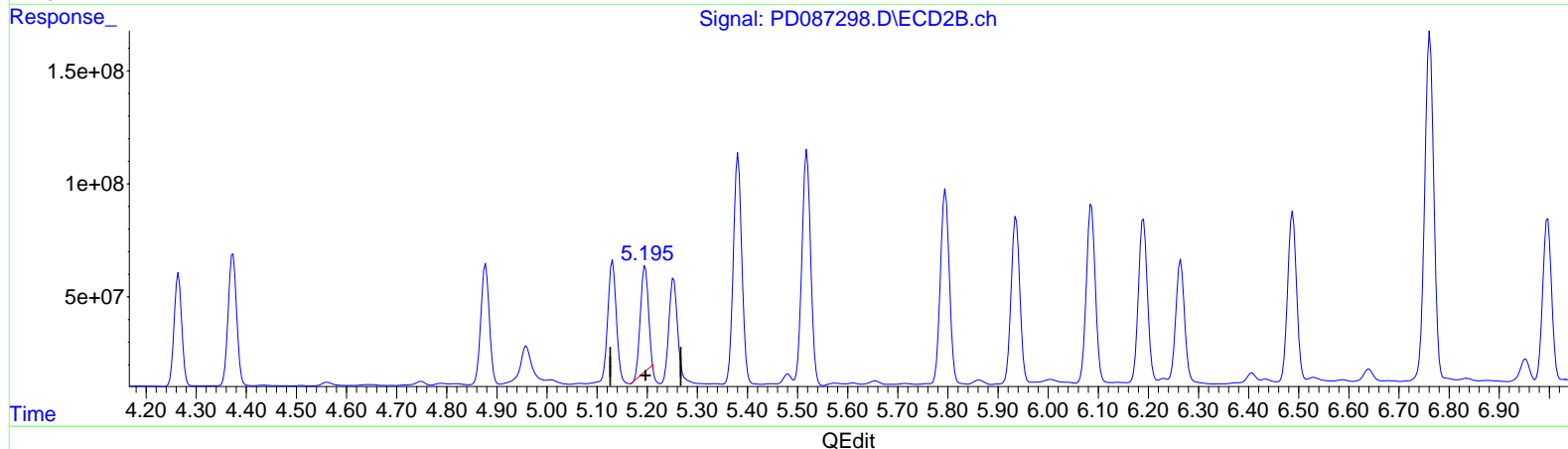
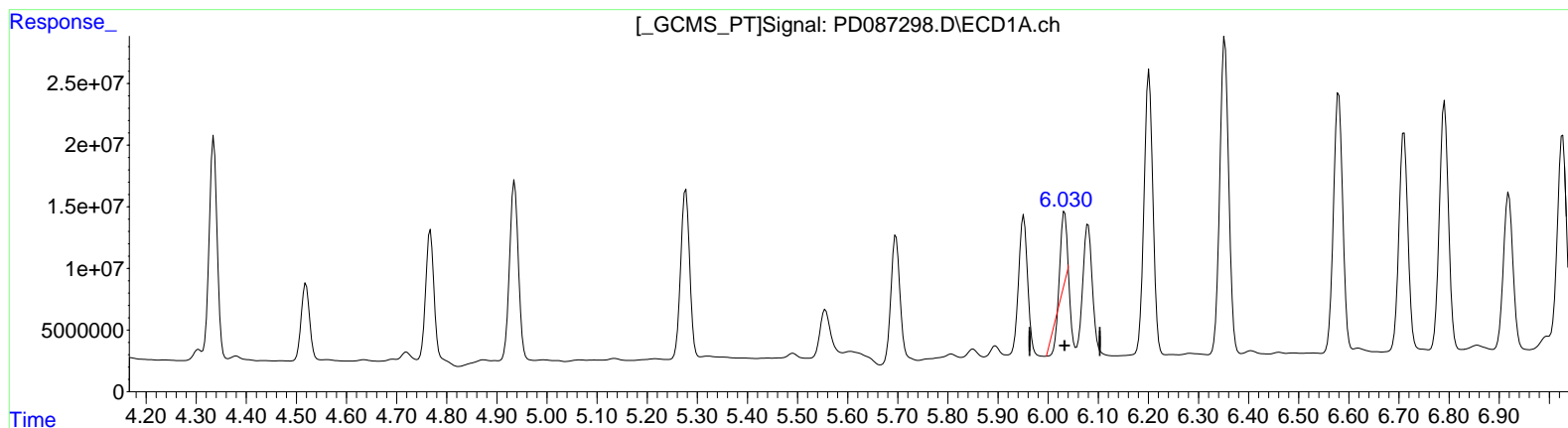
Supervised By :Ankita

Jodhani

12/27/2024

Integration File signal 1: autoint1.e  
 Integration File signal 2: autoint2.e  
 Quant Time: Dec 24 00:00:42 2024  
 Quant Method : Z:\pestpcbsrv\HPCHEM1\ECD\_D\Method\PD122024CLP.M  
 Quant Title : GC Extractables  
 QLast Update : Fri Dec 20 23:32:53 2024  
 Response via : Initial Calibration  
 Integrator: ChemStation

Volume Inj. : 1 µl  
 Signal #1 Phase : ZB-MR1 Signal #2 Phase: ZB-MR2  
 Signal #1 Info : 30M x 0.32mm x0.5 Signal #2 Info : 30M x 0.32mm x 0.25µm



(11) cis-Chlordane (B)

6.033min 11.077 ng/ml

response 39334824

(11) cis-Chlordane #2 (B)

5.196min 32.521 ng/ml

response 510847503

Data Path : Z:\pestpcbsrv\HPCHEM1\ECD\_D\Data\PD122324\  
 Data File : PD087298.D  
 Signal(s) : Signal #1: ECD1A.ch Signal #2: ECD2B.ch  
 Acq On : 23 Dec 2024 13:24  
 Operator : AR\AJ  
 Sample : P5267-09MSD  
 Misc :  
 ALS Vial : 15 Sample Multiplier: 1

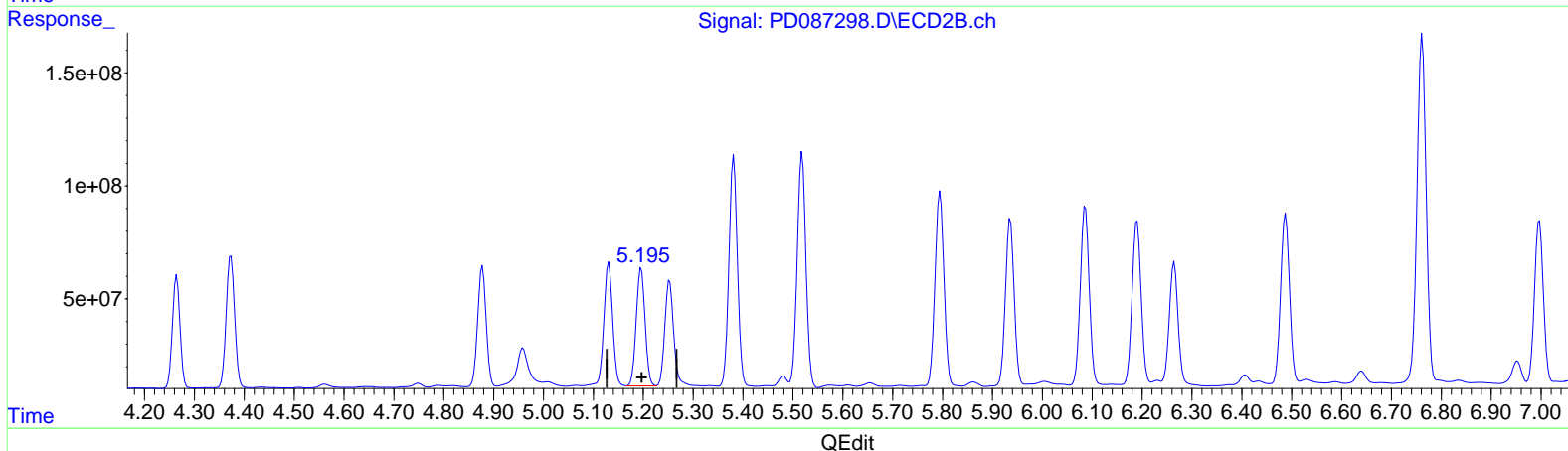
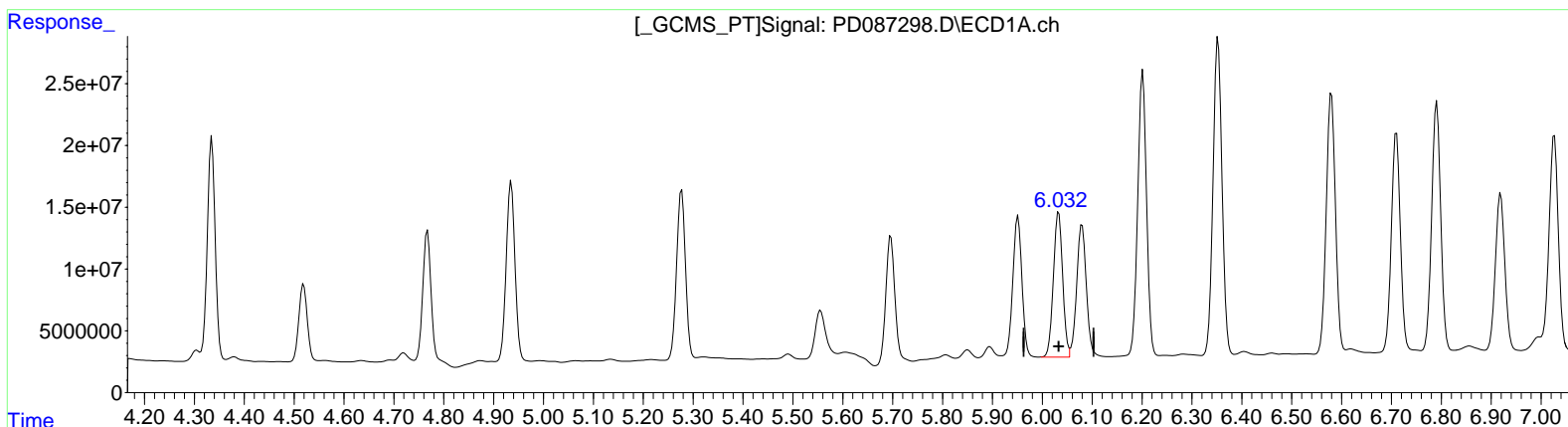
**Instrument :**  
 ECD\_D  
**ClientSampleId :**  
 E28Y9MSD

**Manual Integrations APPROVED**

Reviewed By : Abdul  
 Mirza  
 12/26/2024  
 Supervised By : Ankita  
 Jodhani  
 12/27/2024

Integration File signal 1: autoint1.e  
 Integration File signal 2: autoint2.e  
 Quant Time: Dec 24 00:00:42 2024  
 Quant Method : Z:\pestpcbsrv\HPCHEM1\ECD\_D\Method\PD122024CLP.M  
 Quant Title : GC Extractables  
 QLast Update : Fri Dec 20 23:32:53 2024  
 Response via : Initial Calibration  
 Integrator: ChemStation

Volume Inj. : 1 µl  
 Signal #1 Phase : ZB-MR1 Signal #2 Phase: ZB-MR2  
 Signal #1 Info : 30M x 0.32mm x 0.5 Signal #2 Info : 30M x 0.32mm x 0.25µm



(11) cis-Chlordane (B)  
 6.032min 43.080 ng/ml m  
 response 152972308

(11) cis-Chlordane #2 (B)  
 5.195min 40.861 ng/ml m  
 response 641852130

Data Path : Z:\pestpcbsrv\HPCHEM1\ECD\_D\Data\PD122324\  
 Data File : PD087298.D  
 Signal(s) : Signal #1: ECD1A.ch Signal #2: ECD2B.ch  
 Acq On : 23 Dec 2024 13:24  
 Operator : AR\AJ  
 Sample : P5267-09MSD  
 Misc :  
 ALS Vial : 15 Sample Multiplier: 1

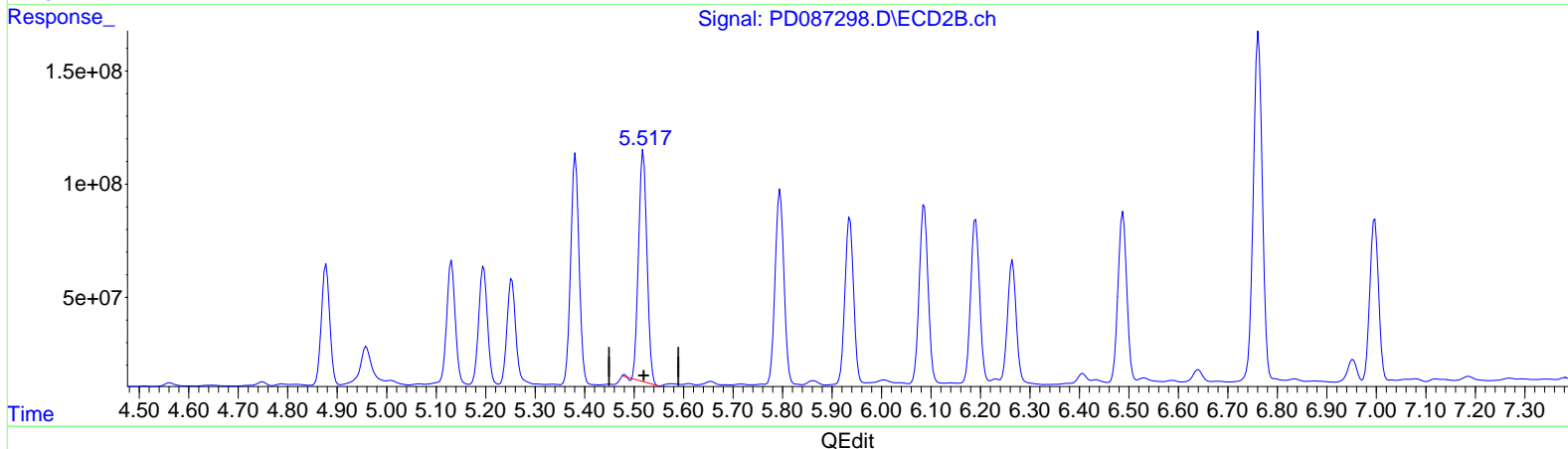
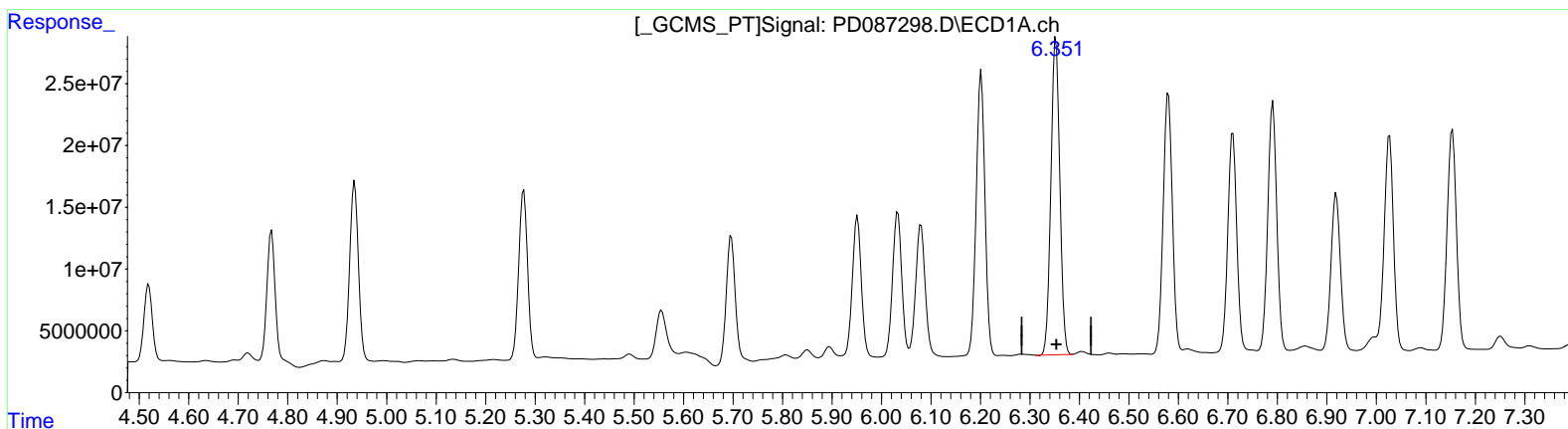
**Instrument :**  
 ECD\_D  
**ClientSampleId :**  
 E28Y9MSD

**Manual IntegrationsAPPROVED**

Reviewed By :Abdul  
 Mirza  
 12/26/2024  
 Supervised By :Ankita  
 Jodhani  
 12/27/2024

Integration File signal 1: autoint1.e  
 Integration File signal 2: autoint2.e  
 Quant Time: Dec 24 00:00:42 2024  
 Quant Method : Z:\pestpcbsrv\HPCHEM1\ECD\_D\Method\PD122024CLP.M  
 Quant Title : GC Extractables  
 QLast Update : Fri Dec 20 23:32:53 2024  
 Response via : Initial Calibration  
 Integrator: ChemStation

Volume Inj. : 1 µl  
 Signal #1 Phase : ZB-MR1 Signal #2 Phase: ZB-MR2  
 Signal #1 Info : 30M x 0.32mm x0.5 Signal #2 Info : 30M x 0.32mm x 0.25µm



(13) Dieldrin (MA)  
 6.353min 88.531 ng/ml  
 response 320181158

(13) Dieldrin #2 (MA)  
 5.519min 79.010 ng/ml  
 response 1209559639

Data Path : Z:\pestpcbsrv\HPCHEM1\ECD\_D\Data\PD122324\  
 Data File : PD087298.D  
 Signal(s) : Signal #1: ECD1A.ch Signal #2: ECD2B.ch  
 Acq On : 23 Dec 2024 13:24  
 Operator : AR\AJ  
 Sample : P5267-09MSD  
 Misc :  
 ALS Vial : 15 Sample Multiplier: 1

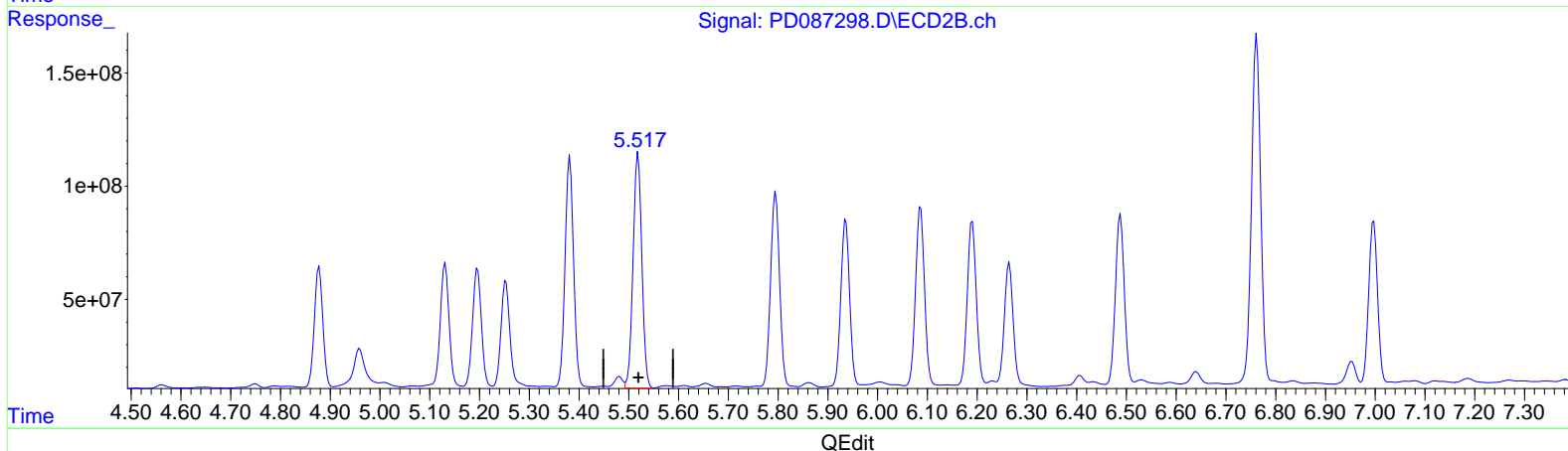
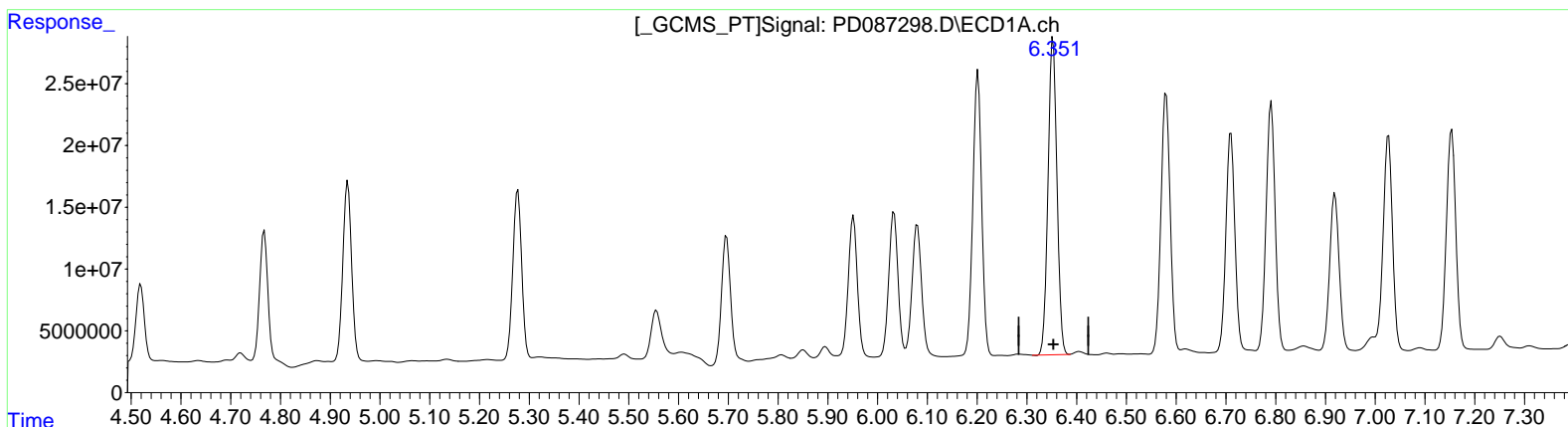
**Instrument :**  
 ECD\_D  
**ClientSampleId :**  
 E28Y9MSD

**Manual IntegrationsAPPROVED**

Reviewed By :Abdul  
 Mirza  
 12/26/2024  
 Supervised By :Ankita  
 Jodhani  
 12/27/2024

Integration File signal 1: autoint1.e  
 Integration File signal 2: autoint2.e  
 Quant Time: Dec 24 00:00:42 2024  
 Quant Method : Z:\pestpcbsrv\HPCHEM1\ECD\_D\Method\PD122024CLP.M  
 Quant Title : GC Extractables  
 QLast Update : Fri Dec 20 23:32:53 2024  
 Response via : Initial Calibration  
 Integrator: ChemStation

Volume Inj. : 1 µl  
 Signal #1 Phase : ZB-MR1 Signal #2 Phase: ZB-MR2  
 Signal #1 Info : 30M x 0.32mm x0.5 Signal #2 Info : 30M x 0.32mm x 0.25µm



(13) Dieldrin (MA)  
 6.353min 88.531 ng/ml  
 response 320181158

(13) Dieldrin #2 (MA)  
 5.517min 83.021 ng/ml m  
 response 1270966787

Data Path : Z:\pestpcbsrv\HPCHEM1\ECD\_D\Data\PD122324\  
 Data File : PD087298.D  
 Signal(s) : Signal #1: ECD1A.ch Signal #2: ECD2B.ch  
 Acq On : 23 Dec 2024 13:24  
 Operator : AR\AJ  
 Sample : P5267-09MSD  
 Misc :  
 ALS Vial : 15 Sample Multiplier: 1

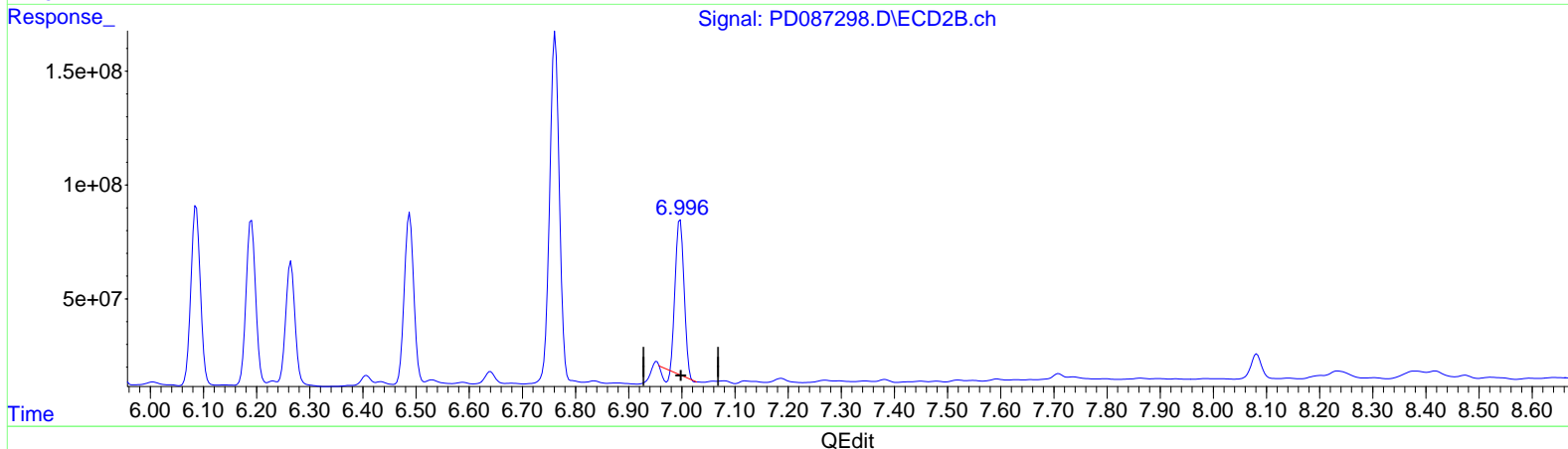
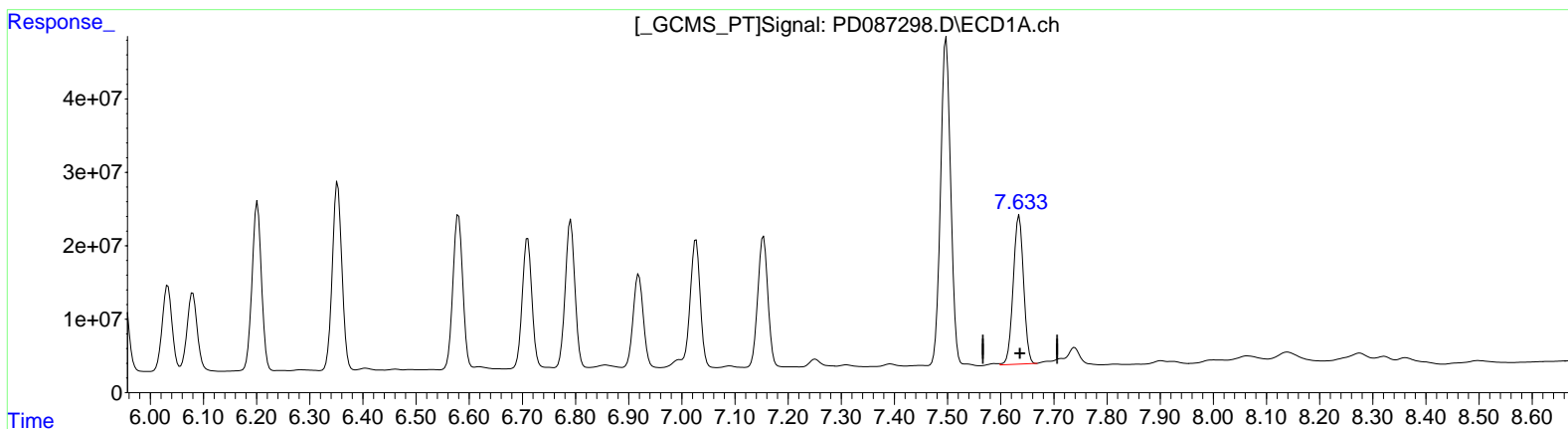
Instrument :  
 ECD\_D  
 ClientSampleId :  
 E28Y9MSD

Manual Integrations APPROVED

Reviewed By : Abdul  
 Mirza  
 12/26/2024  
 Supervised By : Ankita  
 Jodhani  
 12/27/2024

Integration File signal 1: autoint1.e  
 Integration File signal 2: autoint2.e  
 Quant Time: Dec 24 00:00:42 2024  
 Quant Method : Z:\pestpcbsrv\HPCHEM1\ECD\_D\Method\PD122024CLP.M  
 Quant Title : GC Extractables  
 QLast Update : Fri Dec 20 23:32:53 2024  
 Response via : Initial Calibration  
 Integrator: ChemStation

Volume Inj. : 1 µl  
 Signal #1 Phase : ZB-MR1 Signal #2 Phase: ZB-MR2  
 Signal #1 Info : 30M x 0.32mm x 0.5 Signal #2 Info : 30M x 0.32mm x 0.25µm



(21) Endrin ketone (B)  
 7.635min 85.155 ng/ml  
 response 273253896

(21) Endrin ketone #2 (B)  
 6.997min 52.203 ng/ml  
 response 754570320

Data Path : Z:\pestpcbsrv\HPCHEM1\ECD\_D\Data\PD122324\  
 Data File : PD087298.D  
 Signal(s) : Signal #1: ECD1A.ch Signal #2: ECD2B.ch  
 Acq On : 23 Dec 2024 13:24  
 Operator : AR\AJ  
 Sample : P5267-09MSD  
 Misc :  
 ALS Vial : 15 Sample Multiplier: 1

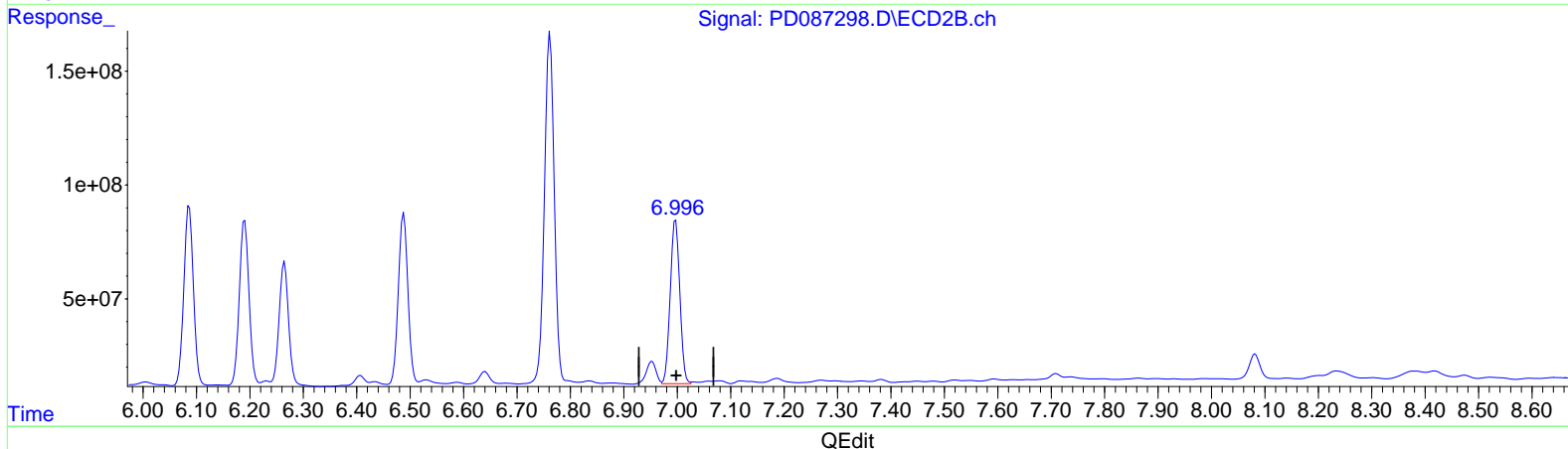
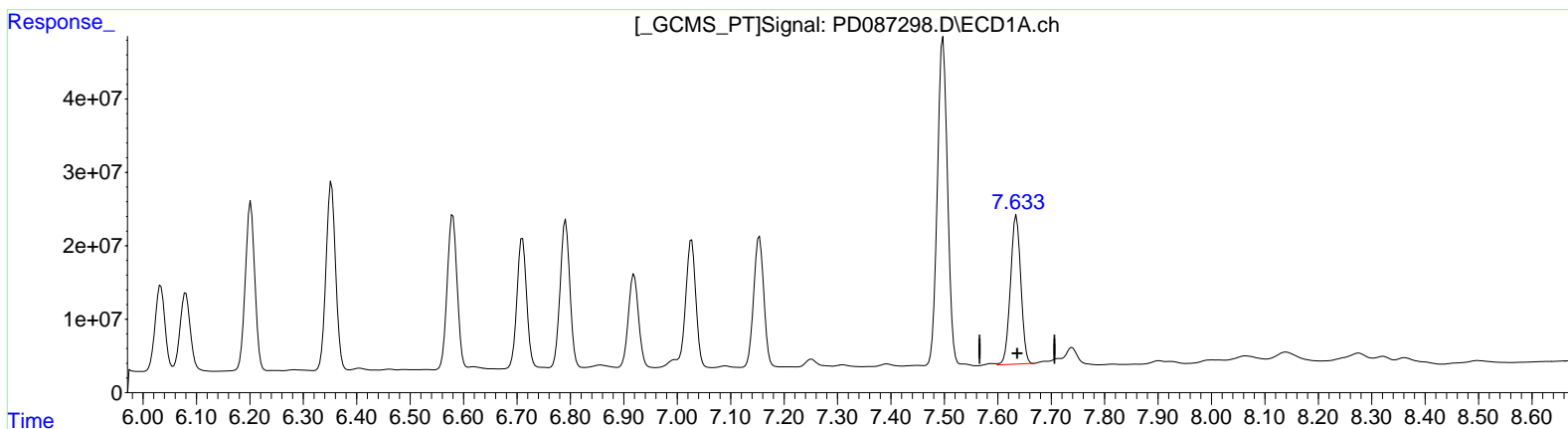
Instrument :  
 ECD\_D  
 ClientSampleId :  
 E28Y9MSD

Manual Integrations APPROVED

Reviewed By : Abdul  
 Mirza  
 12/26/2024  
 Supervised By : Ankita  
 Jodhani  
 12/27/2024

Integration File signal 1: autoint1.e  
 Integration File signal 2: autoint2.e  
 Quant Time: Dec 24 00:00:42 2024  
 Quant Method : Z:\pestpcbsrv\HPCHEM1\ECD\_D\Method\PD122024CLP.M  
 Quant Title : GC Extractables  
 QLast Update : Fri Dec 20 23:32:53 2024  
 Response via : Initial Calibration  
 Integrator: ChemStation

Volume Inj. : 1 µl  
 Signal #1 Phase : ZB-MR1 Signal #2 Phase: ZB-MR2  
 Signal #1 Info : 30M x 0.32mm x 0.5 Signal #2 Info : 30M x 0.32mm x 0.25µm



(21) Endrin ketone (B)

7.635min 85.155 ng/ml

response 273253896

(21) Endrin ketone #2 (B)

6.996min 61.808 ng/ml m

response 893404077