

Data Path : Z:\pestpcbsrv\HPCHEM1\ECD_D\Data\PD122619\
 Data File : PD056785.D
 Signal(s) : Signal #1: ECD1A.ch Signal #2: ECD2B.ch
 Acq On : 27 Dec 2019 07:45
 Operator : SG\AJ
 Sample : HEXANE
 Misc :
 ALS Vial : 1 Sample Multiplier: 1

Instrument :
 ECD_D
 ClientSampleId :

Integration File signal 1: autoint1.e
 Integration File signal 2: autoint2.e
 Quant Time: Dec 27 10:12:46 2019
 Quant Method : Z:\pestpcbsrv\HPCHEM1\ECD_D\Method\PD120219CLP.M
 Quant Title : GC Extractables
 QLast Update : Tue Dec 03 08:51:13 2019
 Response via : Initial Calibration
 Integrator: ChemStation

Volume Inj. : 1 µl
 Signal #1 Phase : ZB-MR2 Signal #2 Phase: ZB-MR1
 Signal #1 Info : 30M x 0.32mm x0.2 Signal #2 Info : 30M x 0.32mm x 0.50µm

Compound	RT#1	RT#2	Resp#1	Resp#2	ng/ml	ng/ml
----------	------	------	--------	--------	-------	-------

System Monitoring Compounds

Target Compounds

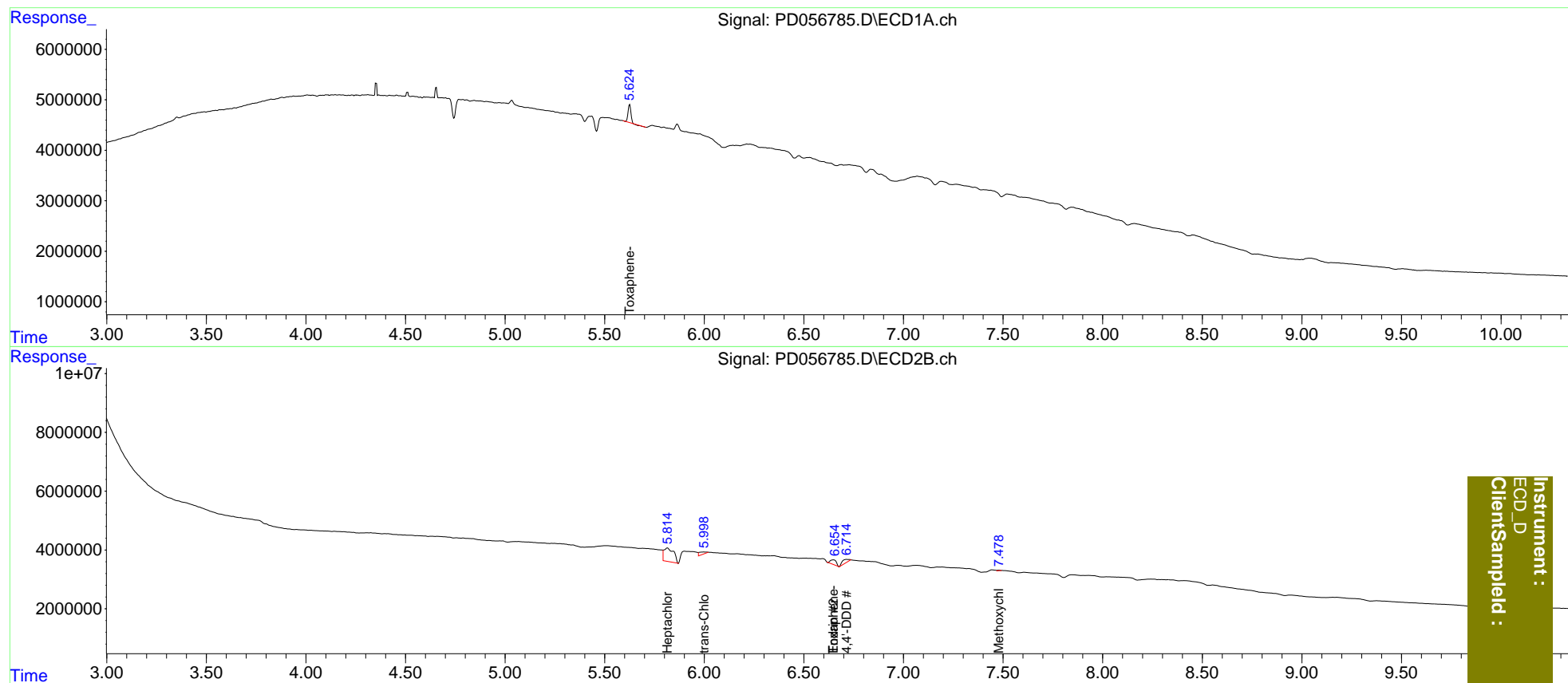
8) B	Heptachlo...	0.000	5.815	0	15874047	N.D.	10.246
10) B	trans-Chl...	0.000	5.999f	0	1814645	N.D.	1.097
14) MA	Endrin	0.000	6.648	0	3287271	N.D.	2.597
16) A	4,4'-DDD	0.000	6.715f	0	2769177	N.D.	2.353
20) A	Methoxychlor	0.000	7.479f	0	122661	N.D.	0.202
23)	Toxaphene-2	5.625	6.648	3485794	3287271	358.215	238.202 #

(f)=RT Delta > 1/2 Window (#)=Amounts differ by > 25% (m)=manual int.

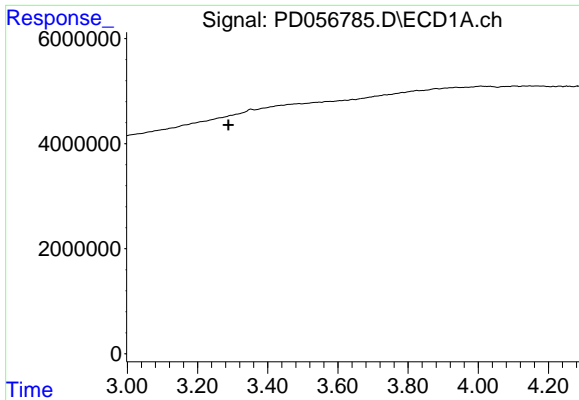
Data Path : Z:\pestpcbsrv\HPCHEM1\ECD_D\Data\PD122619\
 Data File : PD056785.D
 Signal(s) : Signal #1: ECD1A.ch Signal #2: ECD2B.ch
 Acq On : 27 Dec 2019 07:45
 Operator : SG\AJ
 Sample : HEXANE
 Misc :
 ALS Vial : 1 Sample Multiplier: 1

Integration File signal 1: autoint1.e
 Integration File signal 2: autoint2.e
 Quant Time: Dec 27 10:12:46 2019
 Quant Method : Z:\pestpcbsrv\HPCHEM1\ECD_D\Method\PD120219CLP.M
 Quant Title : GC Extractables
 QLast Update : Tue Dec 03 08:51:13 2019
 Response via : Initial Calibration
 Integrator: ChemStation

Volume Inj. : 1 µl
 Signal #1 Phase : ZB-MR2 Signal #2 Phase: ZB-MR1
 Signal #1 Info : 30M x 0.32mm x0.2 Signal #2 Info : 30M x 0.32mm x 0.50µm

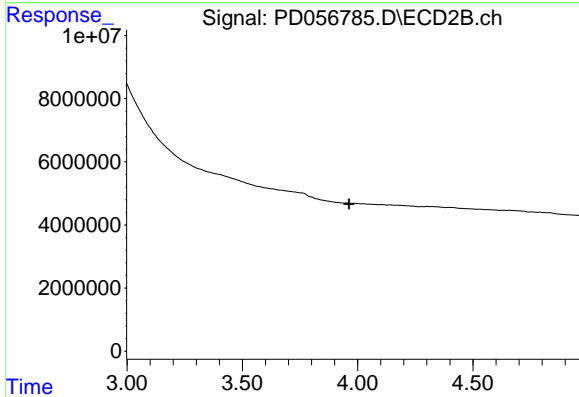


Instrument :
 ECD_D
 ClientSampleId :

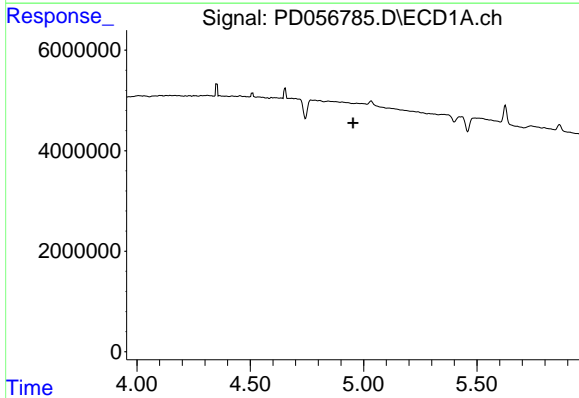


#1 Tetrachloro-m-xylene
 R.T.: 0.000 min
 Exp R.T. : 3.288 min
 Response: 0
 Conc: N.D.

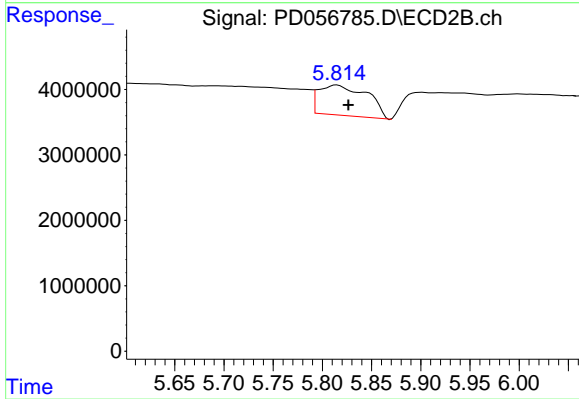
Instrument :
 ECD_D
 ClientSampleId :



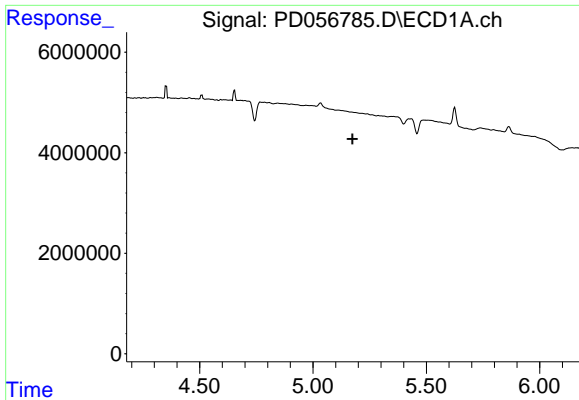
#1 Tetrachloro-m-xylene
 R.T.: 0.000 min
 Exp R.T. : 3.963 min
 Response: 0
 Conc: N.D.



#8 Heptachlor epoxide
 R.T.: 0.000 min
 Exp R.T. : 4.953 min
 Response: 0
 Conc: N.D.

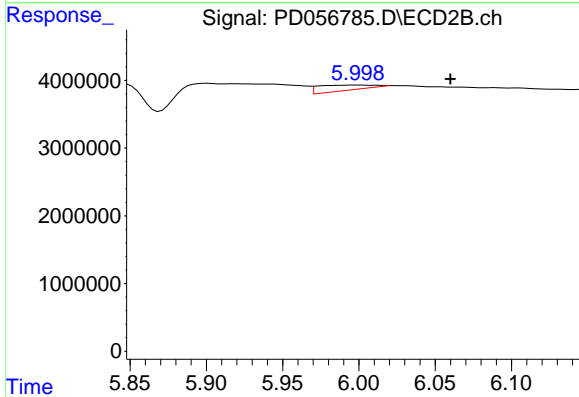


#8 Heptachlor epoxide
 R.T.: 5.815 min
 Delta R.T.: -0.012 min
 Response: 15874047
 Conc: 10.25 ng/ml

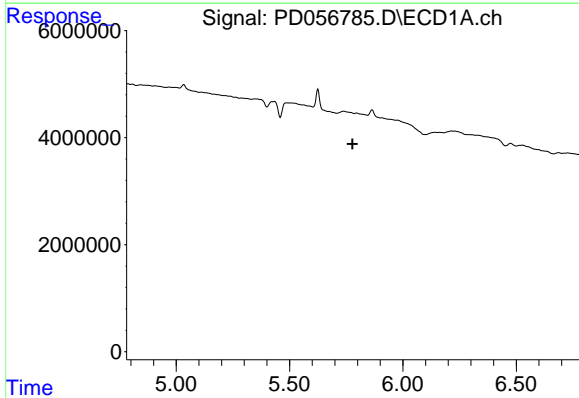


#10 trans-Chlordane
 R.T.: 0.000 min
 Exp R.T. : 5.175 min
 Response: 0
 Conc: N.D.

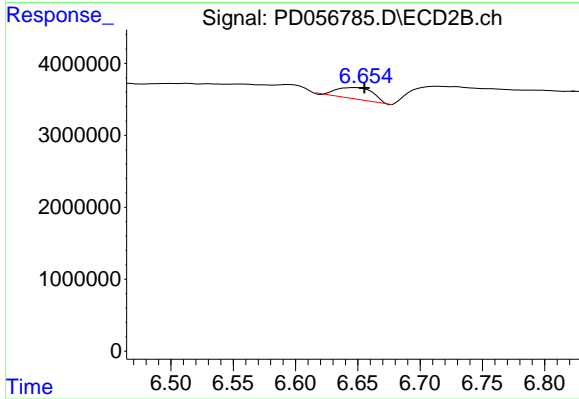
Instrument :
 ECD_D
 ClientSampleId :



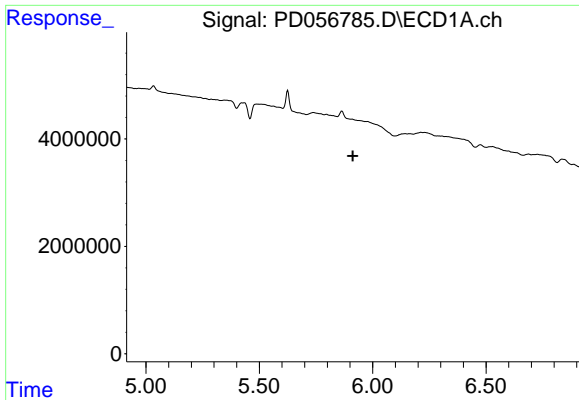
#10 trans-Chlordane
 R.T.: 5.999 min
 Delta R.T.: -0.061 min
 Response: 1814645
 Conc: 1.10 ng/ml



#14 Endrin
 R.T.: 0.000 min
 Exp R.T. : 5.778 min
 Response: 0
 Conc: N.D.



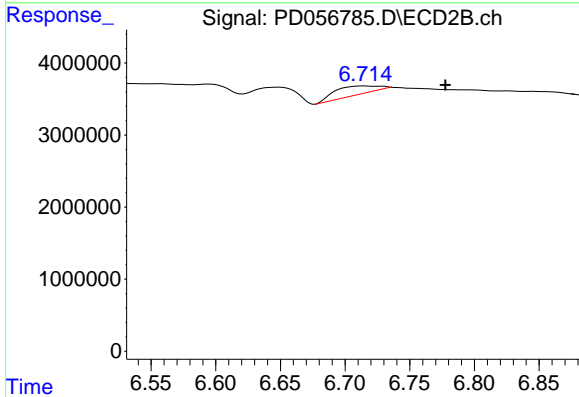
#14 Endrin
 R.T.: 6.648 min
 Delta R.T.: -0.007 min
 Response: 3287271
 Conc: 2.60 ng/ml



#16 4,4'-DDD

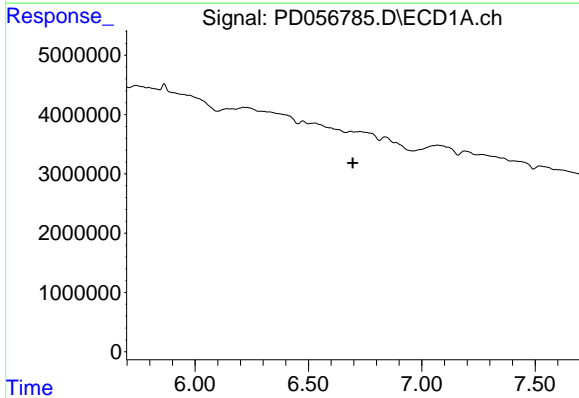
R.T.: 0.000 min
 Exp R.T.: 5.912 min
 Response: 0
 Conc: N.D.

Instrument :
 ECD_D
 ClientSampleId :



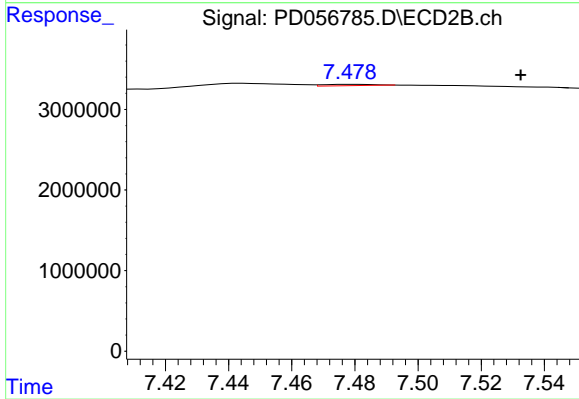
#16 4,4'-DDD

R.T.: 6.715 min
 Delta R.T.: -0.063 min
 Response: 2769177
 Conc: 2.35 ng/ml



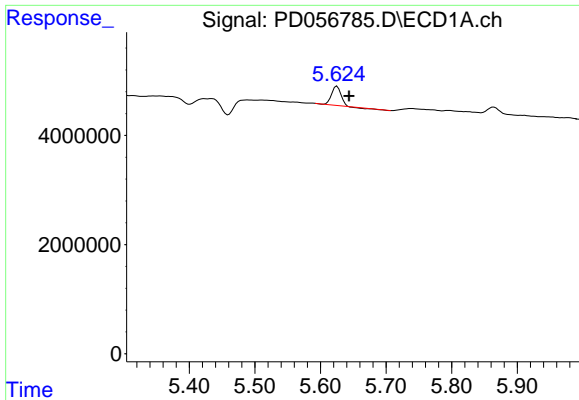
#20 Methoxychlor

R.T.: 0.000 min
 Exp R.T.: 6.696 min
 Response: 0
 Conc: N.D.



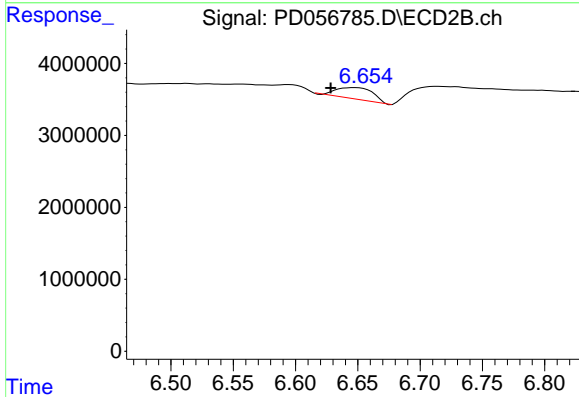
#20 Methoxychlor

R.T.: 7.479 min
 Delta R.T.: -0.054 min
 Response: 122661
 Conc: 0.20 ng/ml

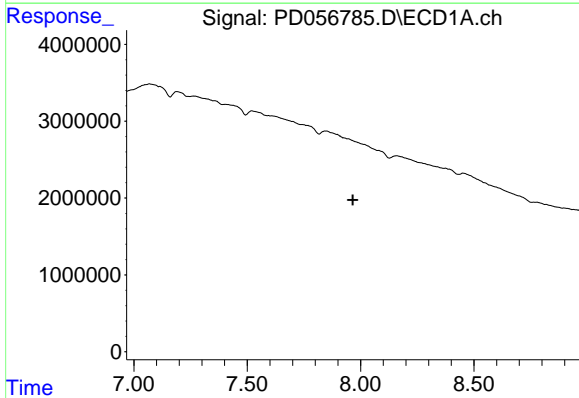


#23 Toxaphene-2
 R.T.: 5.625 min
 Delta R.T.: -0.019 min
 Response: 3485794
 Conc: 358.21 ng/ml

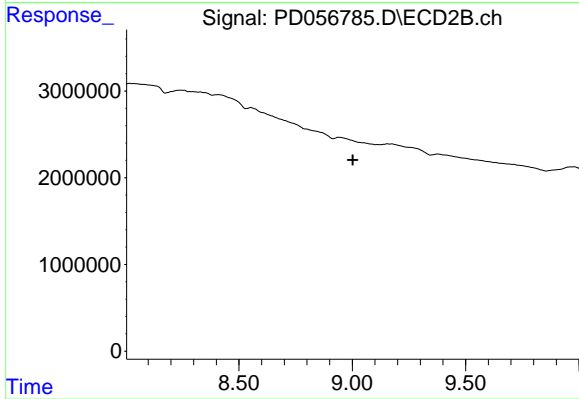
Instrument :
 ECD_D
 ClientSampleId :



#23 Toxaphene-2
 R.T.: 6.648 min
 Delta R.T.: 0.020 min
 Response: 3287271
 Conc: 238.20 ng/ml



#27 Decachlorobiphenyl
 R.T.: 0.000 min
 Exp R.T. : 7.965 min
 Response: 0
 Conc: N.D.



#27 Decachlorobiphenyl
 R.T.: 0.000 min
 Exp R.T. : 9.002 min
 Response: 0
 Conc: N.D.