

Data Path : Z:\pestpcbsrv\HPCHEM1\ECD\_D\Data\PD122623\  
 Data File : PD080454.D  
 Signal(s) : Signal #1: ECD1A.ch Signal #2: ECD2B.ch  
 Acq On : 25 Dec 2023 14:59  
 Operator : AR\AJ  
 Sample : PSTDCCC050  
 Misc :  
 ALS Vial : 4 Sample Multiplier: 1

Integration File signal 1: autoint1.e  
 Integration File signal 2: autoint2.e  
 Quant Time: Dec 25 23:19:18 2023  
 Quant Method : Z:\pestpcbsrv\HPCHEM1\ECD\_D\Method\PD120623.M  
 Quant Title : GC Extractables  
 QLast Update : Wed Dec 06 14:11:45 2023  
 Response via : Initial Calibration  
 Integrator: ChemStation

Volume Inj. : 1 µl  
 Signal #1 Phase : ZB-MR2 Signal #2 Phase: ZB-MR2  
 Signal #1 Info : 30M x 0.32mm x0.5 Signal #2 Info : 30M x 0.32mm x 0.25µm

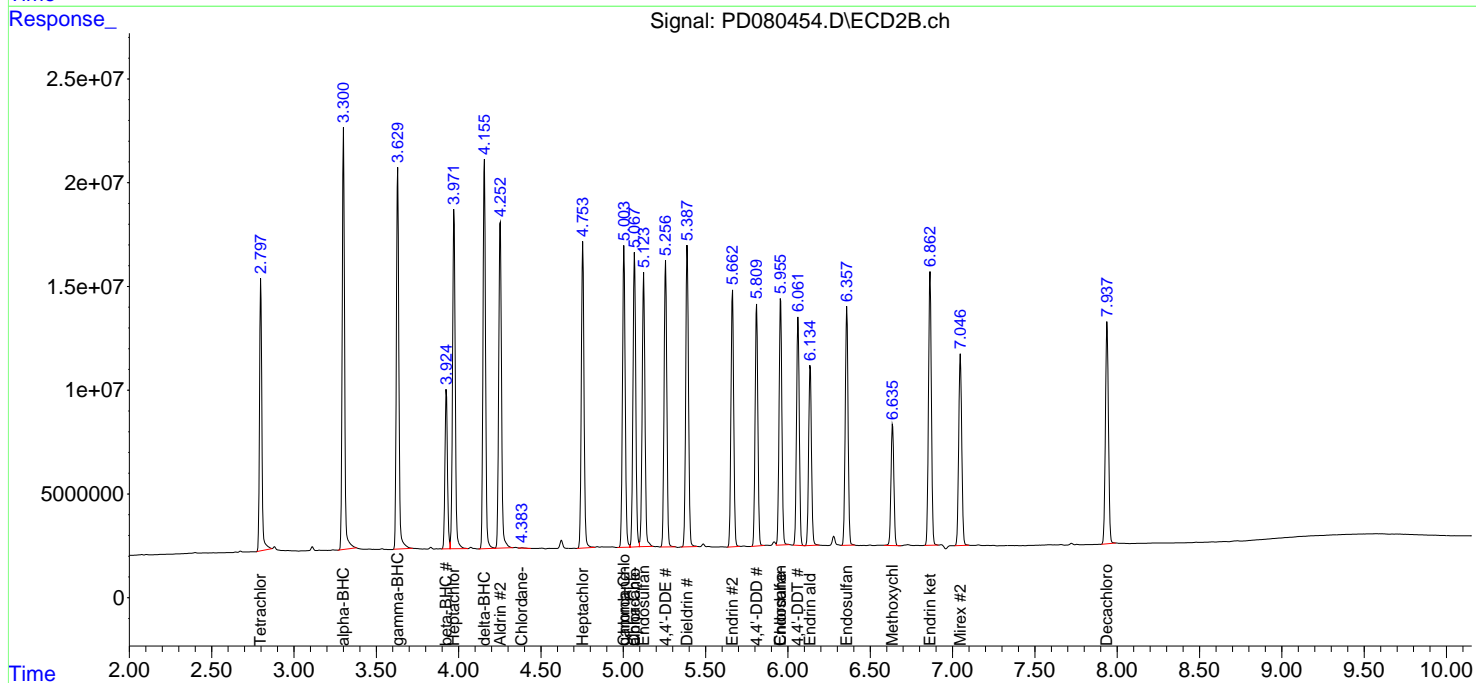
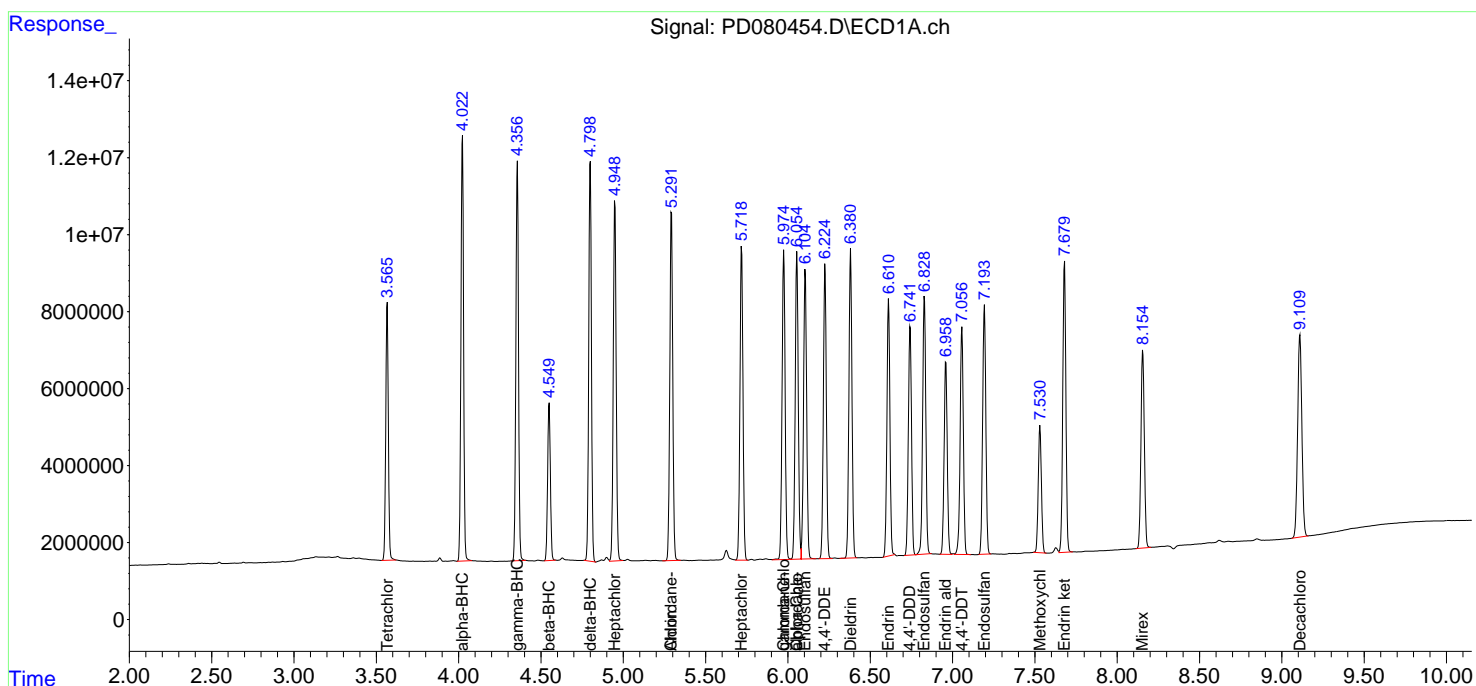
	Compound	RT#1	RT#2	Resp#1	Resp#2	ng/ml	ng/ml
-----							
System Monitoring Compounds							
1)	SA Tetrachlo...	3.567	2.799	73672758	129.9E6	48.880	51.688
28)	SA Decachlor...	9.110	7.939	93663997	138.2E6	46.272	49.043
Target Compounds							
2)	A alpha-BHC	4.023	3.301	122.8E6	203.6E6	48.884	53.248
3)	MA gamma-BHC...	4.357	3.630	115.4E6	193.6E6	48.728	53.262
4)	MA Heptachlor	4.949	3.972	115.5E6	183.9E6	46.962	52.437
5)	MB Aldrin	5.293	4.253	113.1E6	184.9E6	47.611	51.947
6)	B beta-BHC	4.550	3.926	47812222	81042718	47.775	52.497
7)	B delta-BHC	4.800	4.157	118.7E6	198.6E6	48.483	52.746
8)	B Heptachlo...	5.719	4.755	103.4E6	169.2E6	46.961	51.589
9)	A Endosulfan I	6.106	5.124	97736407	156.6E6	47.531	51.861
10)	B gamma-Chl...	5.975	5.005	103.1E6	167.7E6	47.375	52.025
11)	B alpha-Chl...	6.055	5.069	102.3E6	166.2E6	47.410	51.722
12)	B 4,4'-DDE	6.226	5.257	95900097	158.0E6	47.828	52.403
13)	MA Dieldrin	6.381	5.389	103.4E6	171.0E6	47.410	52.219
14)	MA Endrin	6.612	5.664	84705741	145.0E6	46.709	51.584
15)	B Endosulfa...	6.829	5.956	88856912	141.5E6	46.643	51.848
16)	A 4,4'-DDD	6.743	5.810	79551033	135.1E6	47.486	52.465
17)	MA 4,4'-DDT	7.057	6.062	79864339	127.2E6	44.889	50.072
18)	B Endrin al...	6.960	6.136	66114463	104.8E6	46.150	51.028
19)	B Endosulfa...	7.194	6.358	87689446	137.4E6	46.247	51.244
20)	A Methoxychlor	7.531	6.636	43940601	70677542	44.457	48.332
21)	B Endrin ke...	7.680	6.864	98188855	161.5E6	47.423	51.678
22)	Mirex	8.156	7.048	73621096	120.1E6	45.005	49.613
24)	Chlordane-2	5.293f	4.384	113.1E6	173042	1479.142	1.514 #
25)	Chlordane-3	5.975	5.005	103.1E6	167.7E6	341.597	532.335 #
26)	Chlordane-4	6.055	5.069	102.3E6	166.2E6	282.399	564.975 #
27)	Chlordane-5	0.000	5.956	0	141.5E6	N.D.	1245.246 #

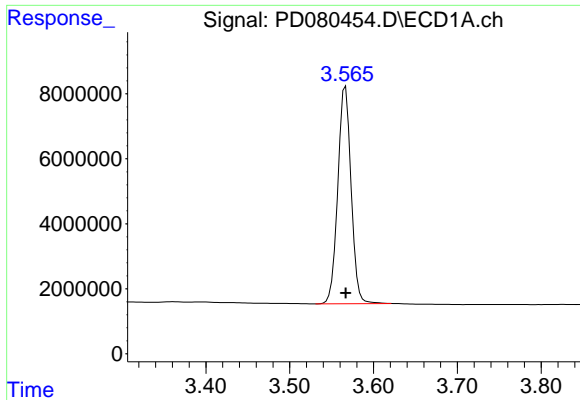
(f)=RT Delta > 1/2 Window (#)=Amounts differ by > 25% (m)=manual int.

Data Path : Z:\pestpcbsrv\HPCHEM1\ECD\_D\Data\PD122623\  
 Data File : PD080454.D  
 Signal(s) : Signal #1: ECD1A.ch Signal #2: ECD2B.ch  
 Acq On : 25 Dec 2023 14:59  
 Operator : AR\AJ  
 Sample : PSTDCCC050  
 Misc :  
 ALS Vial : 4 Sample Multiplier: 1

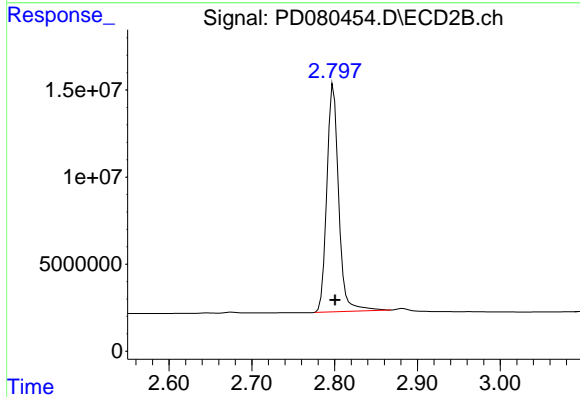
Integration File signal 1: autoint1.e  
 Integration File signal 2: autoint2.e  
 Quant Time: Dec 25 23:19:18 2023  
 Quant Method : Z:\pestpcbsrv\HPCHEM1\ECD\_D\Method\PD120623.M  
 Quant Title : GC Extractables  
 QLast Update : Wed Dec 06 14:11:45 2023  
 Response via : Initial Calibration  
 Integrator: ChemStation

Volume Inj. : 1 µl  
 Signal #1 Phase : ZB-MR1 Signal #2 Phase: ZB-MR2  
 Signal #1 Info : 30M x 0.32mm x0.5 Signal #2 Info : 30M x 0.32mm x 0.25µm

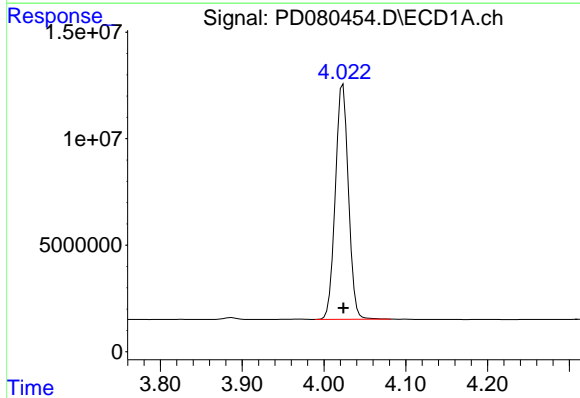




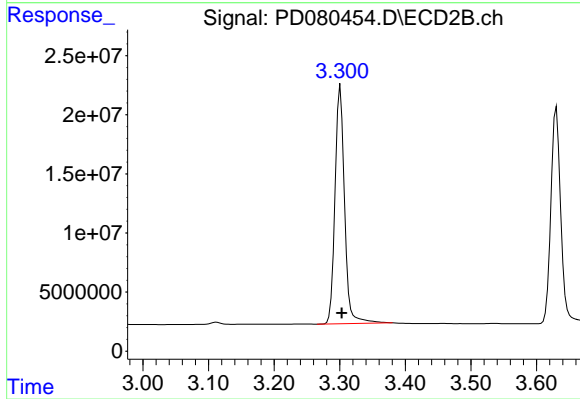
#1 Tetrachloro-m-xylene  
 R.T.: 3.567 min  
 Delta R.T.: 0.000 min  
 Response: 73672758  
 Conc: 48.88 ng/ml



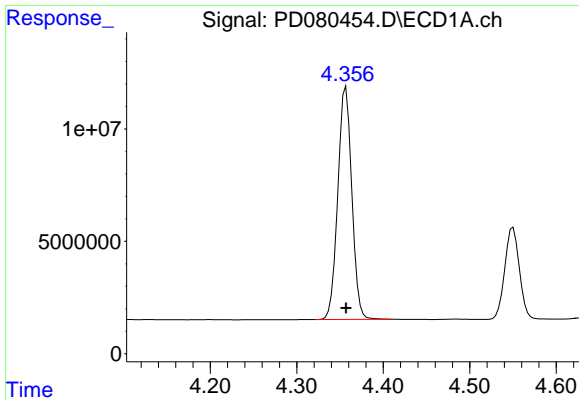
#1 Tetrachloro-m-xylene  
 R.T.: 2.799 min  
 Delta R.T.: -0.002 min  
 Response: 129933618  
 Conc: 51.69 ng/ml



#2 alpha-BHC  
 R.T.: 4.023 min  
 Delta R.T.: 0.000 min  
 Response: 122790373  
 Conc: 48.88 ng/ml

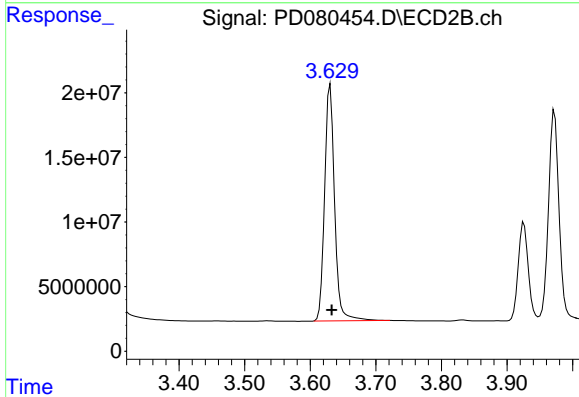


#2 alpha-BHC  
 R.T.: 3.301 min  
 Delta R.T.: -0.002 min  
 Response: 203603525  
 Conc: 53.25 ng/ml



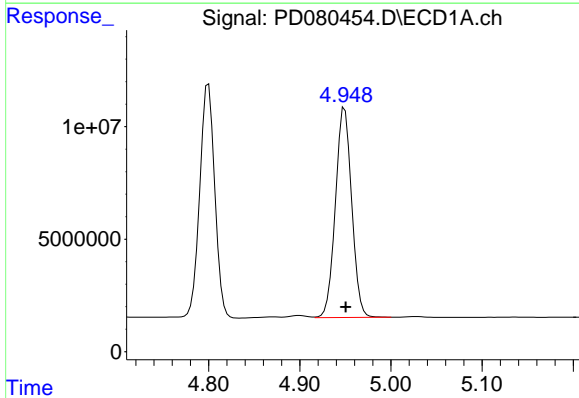
#3 gamma-BHC (Lindane)

R.T.: 4.357 min  
Delta R.T.: 0.000 min  
Response: 115446265  
Conc: 48.73 ng/ml



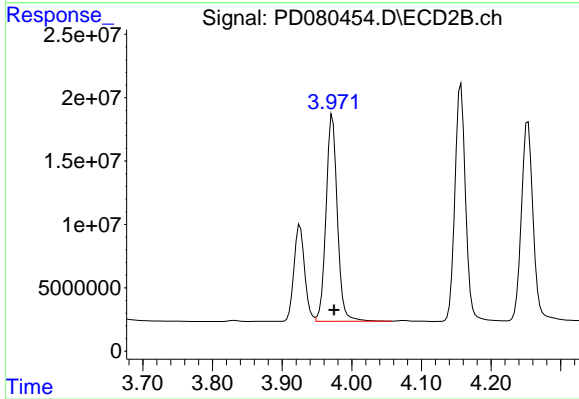
#3 gamma-BHC (Lindane)

R.T.: 3.630 min  
Delta R.T.: -0.002 min  
Response: 193554778  
Conc: 53.26 ng/ml



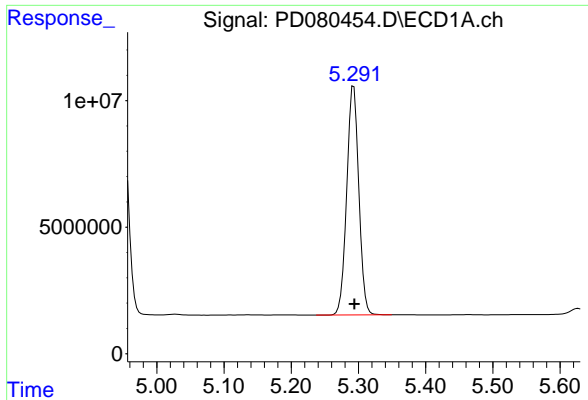
#4 Heptachlor

R.T.: 4.949 min  
Delta R.T.: -0.001 min  
Response: 115493195  
Conc: 46.96 ng/ml

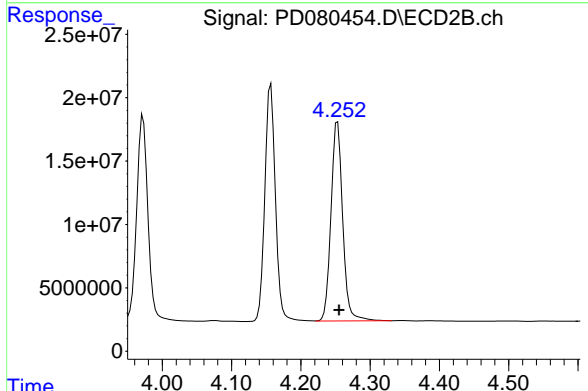


#4 Heptachlor

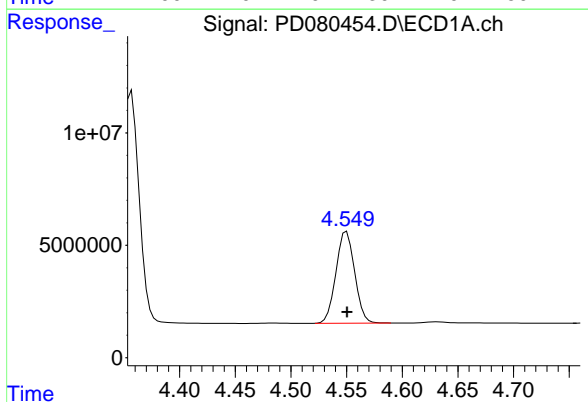
R.T.: 3.972 min  
Delta R.T.: -0.002 min  
Response: 183865941  
Conc: 52.44 ng/ml



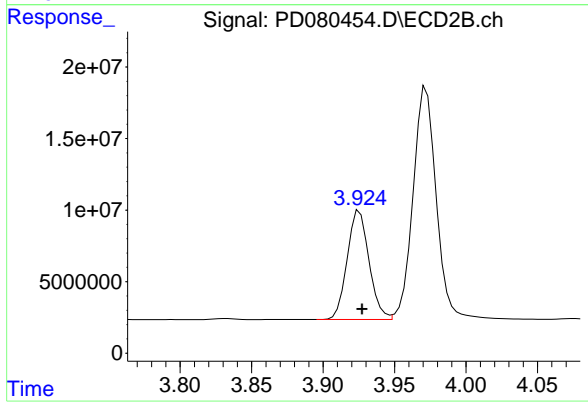
#5 Aldrin  
 R.T.: 5.293 min  
 Delta R.T.: 0.000 min  
 Response: 113061655  
 Conc: 47.61 ng/ml



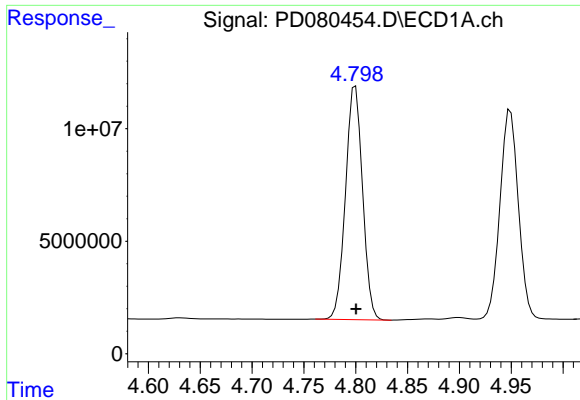
#5 Aldrin  
 R.T.: 4.253 min  
 Delta R.T.: -0.002 min  
 Response: 184937698  
 Conc: 51.95 ng/ml



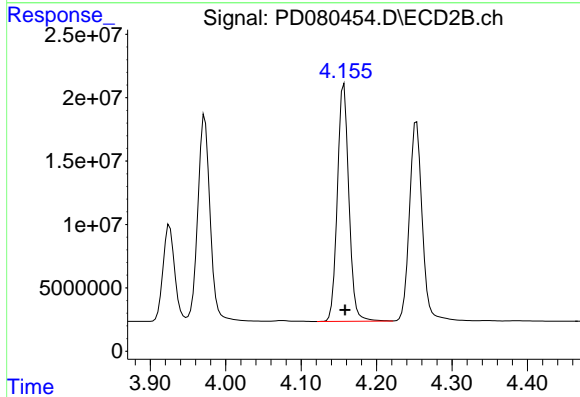
#6 beta-BHC  
 R.T.: 4.550 min  
 Delta R.T.: 0.000 min  
 Response: 47812222  
 Conc: 47.78 ng/ml



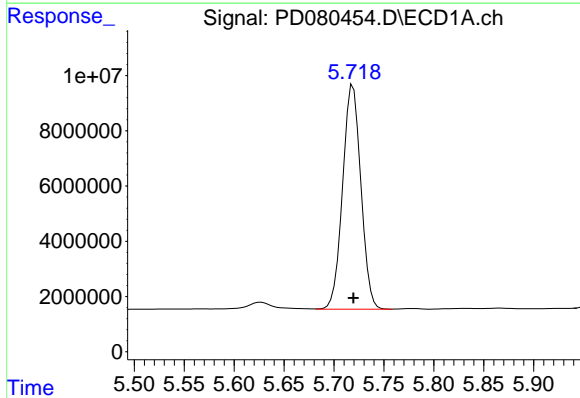
#6 beta-BHC  
 R.T.: 3.926 min  
 Delta R.T.: -0.002 min  
 Response: 81042718  
 Conc: 52.50 ng/ml



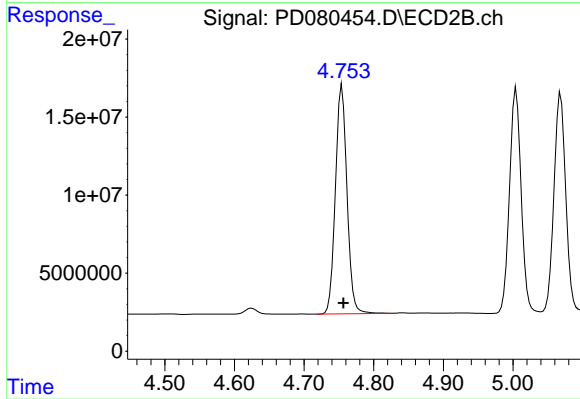
#7 delta-BHC  
R.T.: 4.800 min  
Delta R.T.: 0.000 min  
Response: 118732480  
Conc: 48.48 ng/ml



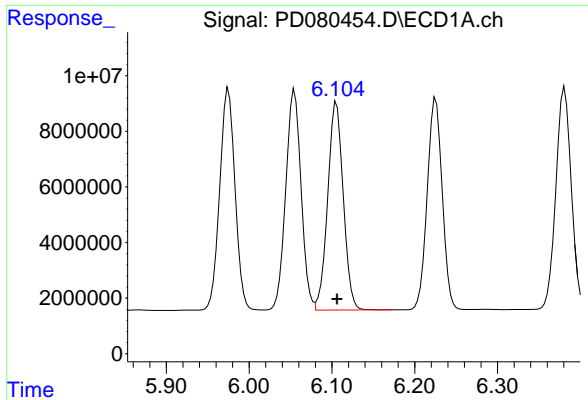
#7 delta-BHC  
R.T.: 4.157 min  
Delta R.T.: -0.002 min  
Response: 198621855  
Conc: 52.75 ng/ml



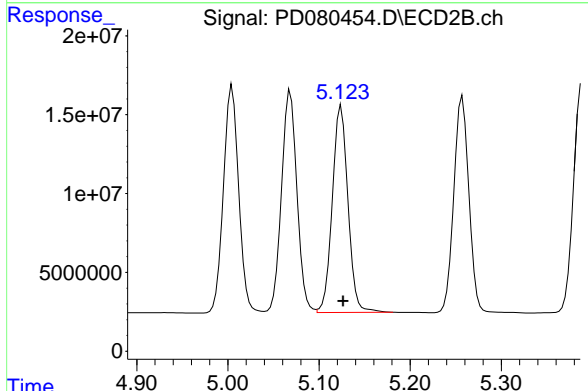
#8 Heptachlor epoxide  
R.T.: 5.719 min  
Delta R.T.: 0.000 min  
Response: 103446688  
Conc: 46.96 ng/ml



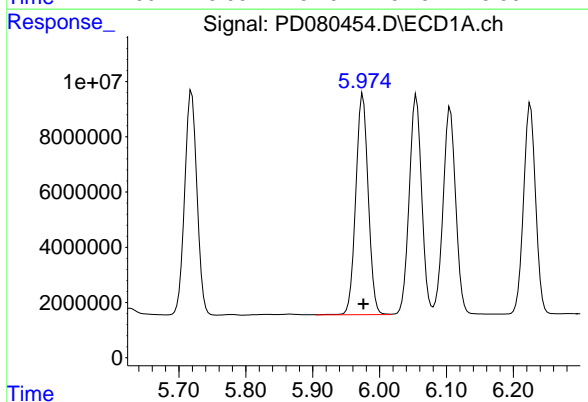
#8 Heptachlor epoxide  
R.T.: 4.755 min  
Delta R.T.: -0.002 min  
Response: 169178174  
Conc: 51.59 ng/ml



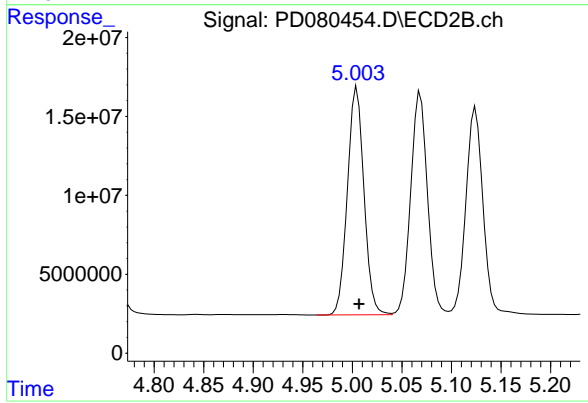
#9 Endosulfan I  
R.T.: 6.106 min  
Delta R.T.: 0.000 min  
Response: 97736407  
Conc: 47.53 ng/ml



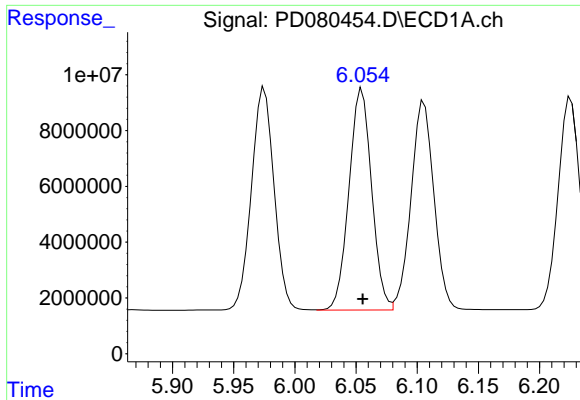
#9 Endosulfan I  
R.T.: 5.124 min  
Delta R.T.: -0.002 min  
Response: 156582147  
Conc: 51.86 ng/ml



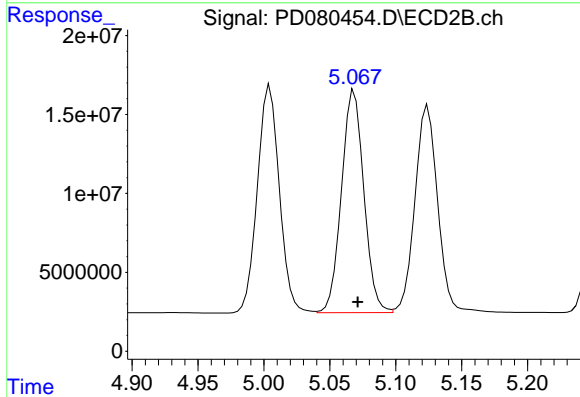
#10 gamma-Chlordane  
R.T.: 5.975 min  
Delta R.T.: 0.000 min  
Response: 103132485  
Conc: 47.37 ng/ml



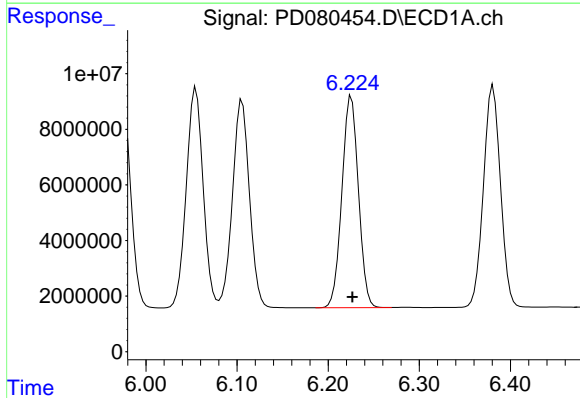
#10 gamma-Chlordane  
R.T.: 5.005 min  
Delta R.T.: -0.002 min  
Response: 167709866  
Conc: 52.03 ng/ml



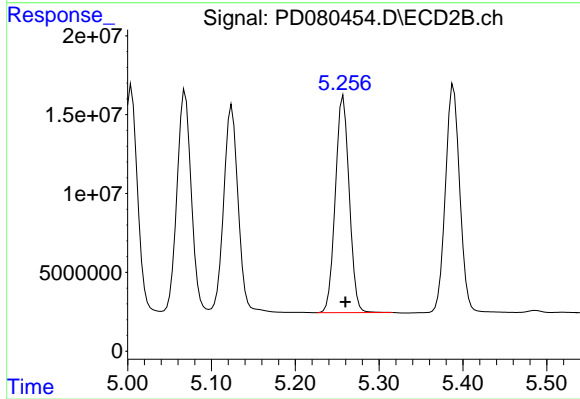
#11 alpha-Chlordane  
R.T.: 6.055 min  
Delta R.T.: 0.000 min  
Response: 102270446  
Conc: 47.41 ng/ml



#11 alpha-Chlordane  
R.T.: 5.069 min  
Delta R.T.: -0.003 min  
Response: 166226730  
Conc: 51.72 ng/ml

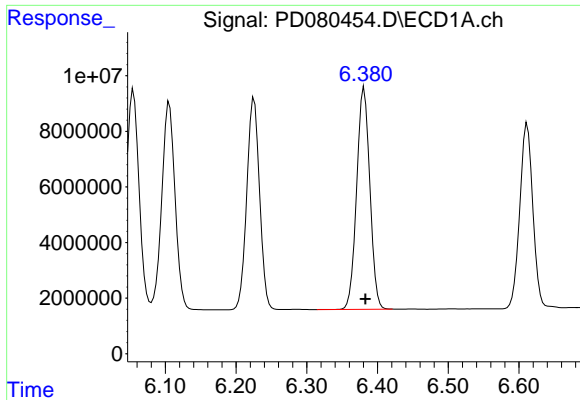


#12 4,4'-DDE  
R.T.: 6.226 min  
Delta R.T.: -0.001 min  
Response: 95900097  
Conc: 47.83 ng/ml

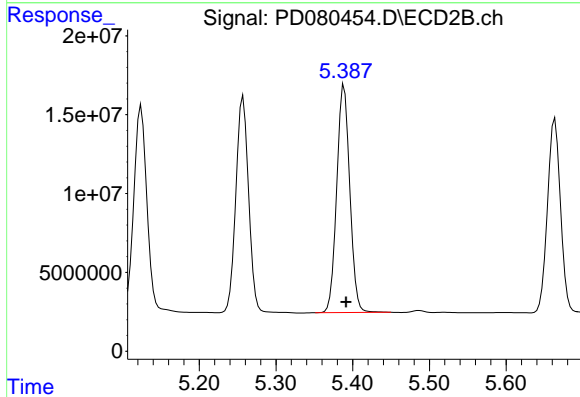


#12 4,4'-DDE  
R.T.: 5.257 min  
Delta R.T.: -0.003 min  
Response: 157955067  
Conc: 52.40 ng/ml

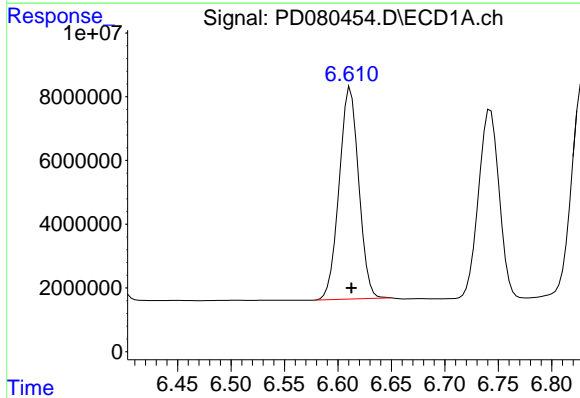




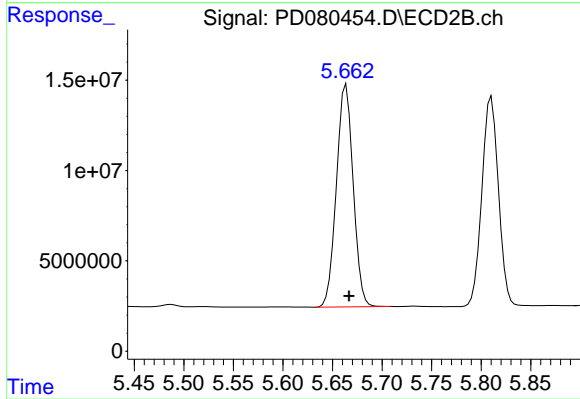
#13 Dieldrin  
R.T.: 6.381 min  
Delta R.T.: -0.001 min  
Response: 103441399  
Conc: 47.41 ng/ml



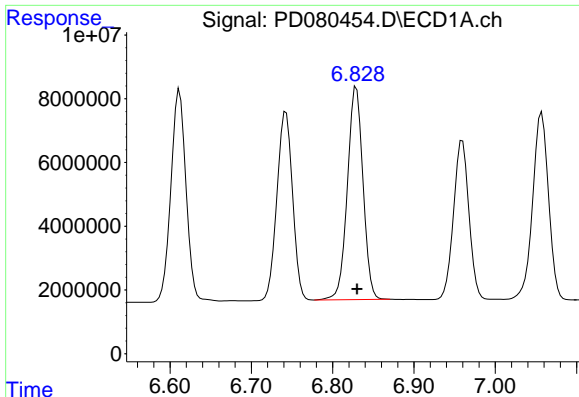
#13 Dieldrin  
R.T.: 5.389 min  
Delta R.T.: -0.003 min  
Response: 170987177  
Conc: 52.22 ng/ml



#14 Endrin  
R.T.: 6.612 min  
Delta R.T.: 0.000 min  
Response: 84705741  
Conc: 46.71 ng/ml

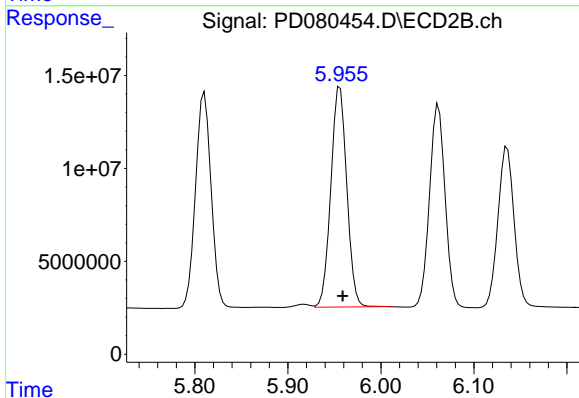


#14 Endrin  
R.T.: 5.664 min  
Delta R.T.: -0.003 min  
Response: 144955575  
Conc: 51.58 ng/ml



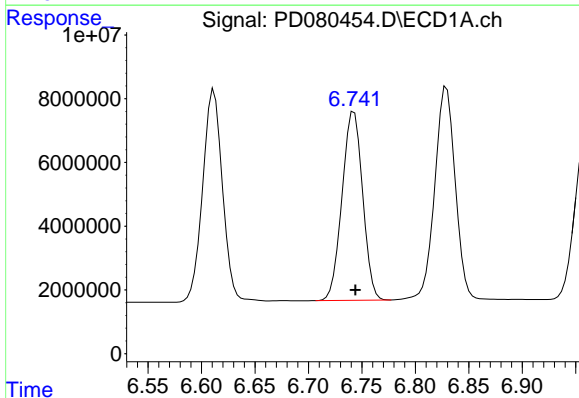
#15 Endosulfan II

R.T.: 6.829 min  
Delta R.T.: 0.000 min  
Response: 88856912  
Conc: 46.64 ng/ml



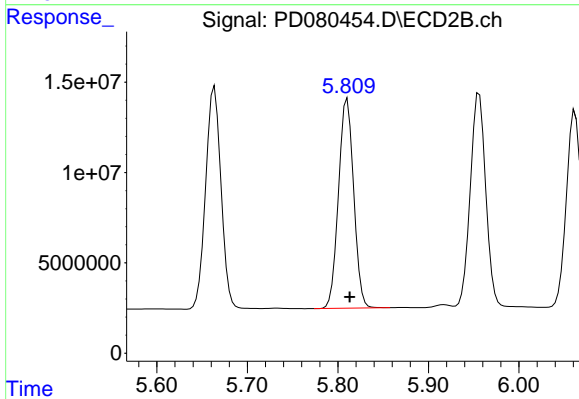
#15 Endosulfan II

R.T.: 5.956 min  
Delta R.T.: -0.003 min  
Response: 141470589  
Conc: 51.85 ng/ml



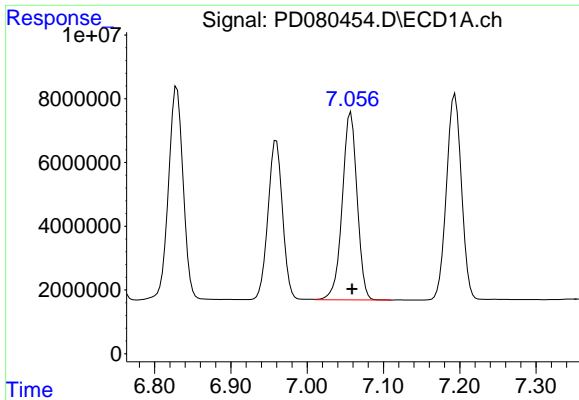
#16 4,4'-DDD

R.T.: 6.743 min  
Delta R.T.: -0.001 min  
Response: 79551033  
Conc: 47.49 ng/ml

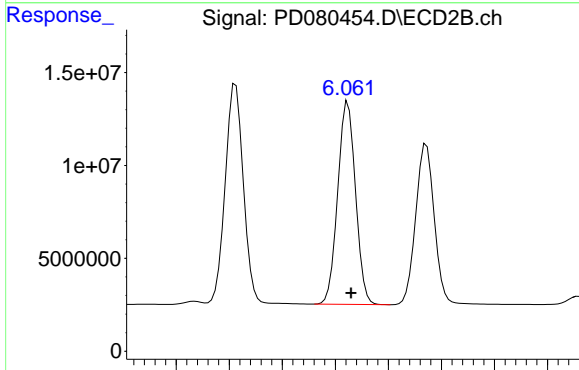


#16 4,4'-DDD

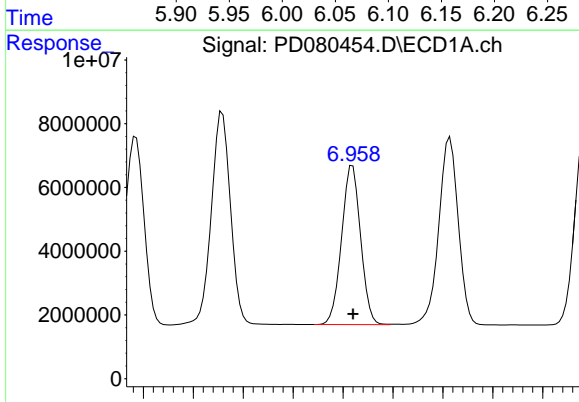
R.T.: 5.810 min  
Delta R.T.: -0.003 min  
Response: 135099465  
Conc: 52.46 ng/ml



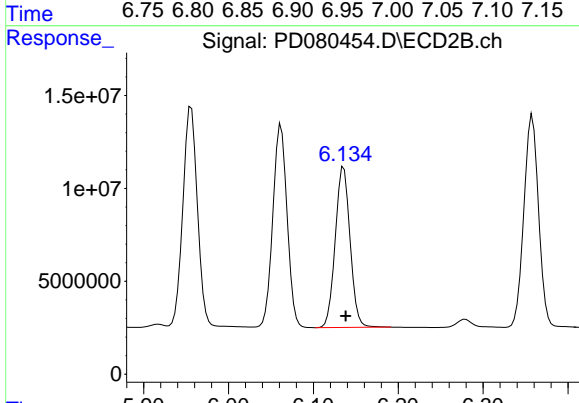
#17 4,4'-DDT  
R.T.: 7.057 min  
Delta R.T.: -0.001 min  
Response: 79864339  
Conc: 44.89 ng/ml



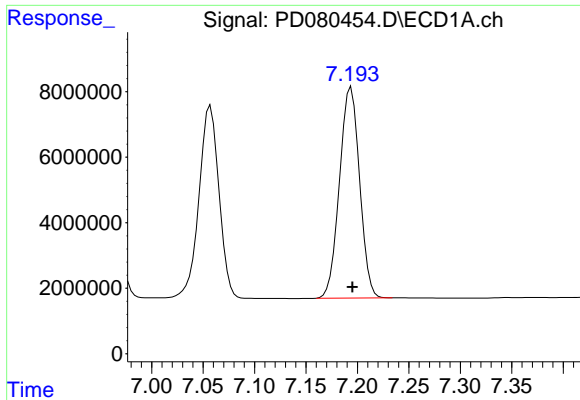
#17 4,4'-DDT  
R.T.: 6.062 min  
Delta R.T.: -0.003 min  
Response: 127212550  
Conc: 50.07 ng/ml



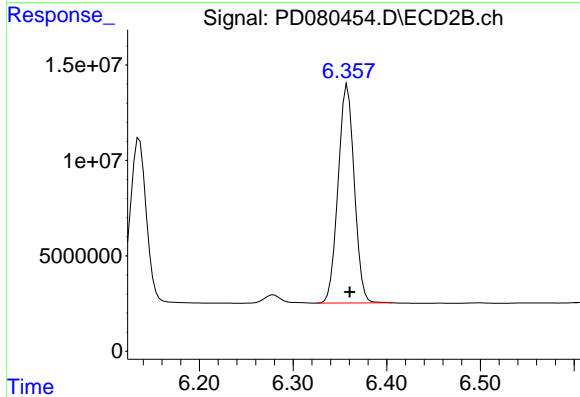
#18 Endrin aldehyde  
R.T.: 6.960 min  
Delta R.T.: 0.000 min  
Response: 66114463  
Conc: 46.15 ng/ml



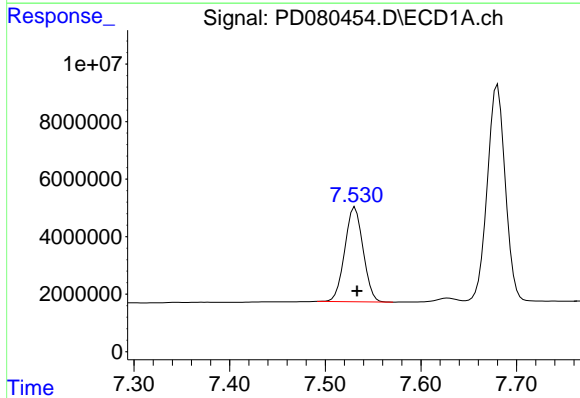
#18 Endrin aldehyde  
R.T.: 6.136 min  
Delta R.T.: -0.002 min  
Response: 104753852  
Conc: 51.03 ng/ml



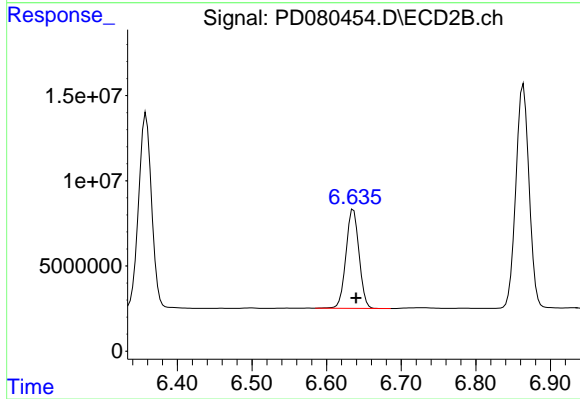
#19 Endosulfan Sulfate  
R.T.: 7.194 min  
Delta R.T.: -0.001 min  
Response: 87689446  
Conc: 46.25 ng/ml



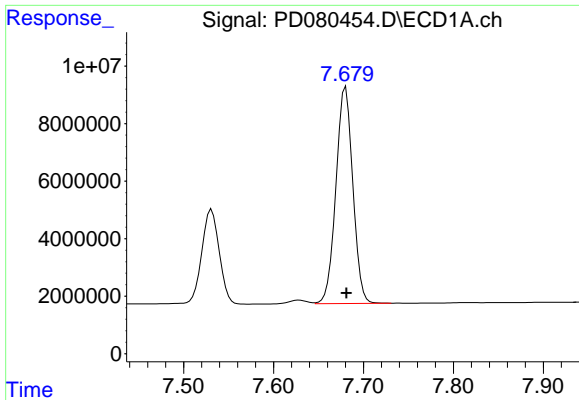
#19 Endosulfan Sulfate  
R.T.: 6.358 min  
Delta R.T.: -0.002 min  
Response: 137384012  
Conc: 51.24 ng/ml



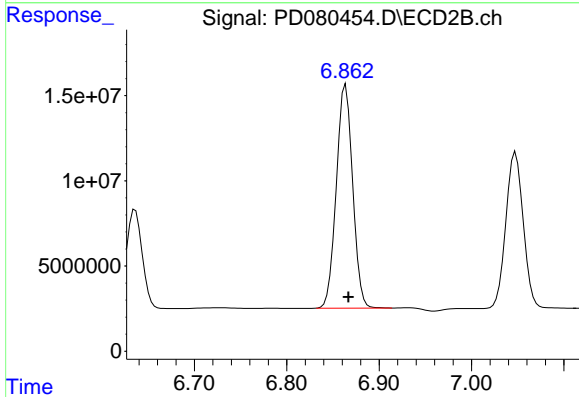
#20 Methoxychlor  
R.T.: 7.531 min  
Delta R.T.: -0.002 min  
Response: 43940601  
Conc: 44.46 ng/ml



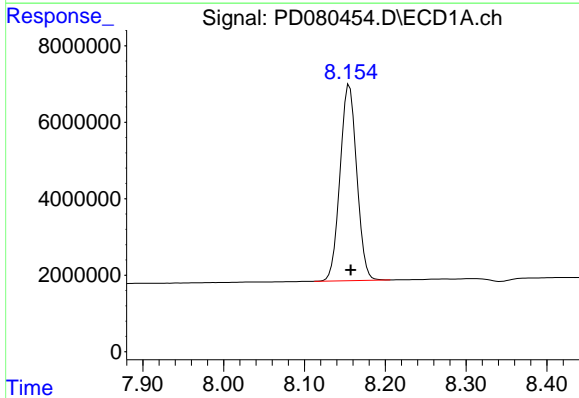
#20 Methoxychlor  
R.T.: 6.636 min  
Delta R.T.: -0.004 min  
Response: 70677542  
Conc: 48.33 ng/ml



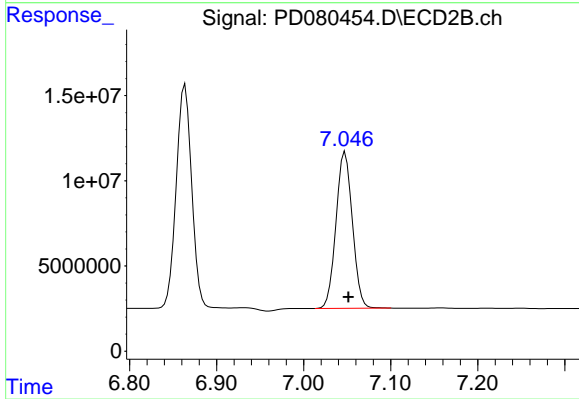
#21 Endrin ketone  
R.T.: 7.680 min  
Delta R.T.: 0.000 min  
Response: 98188855  
Conc: 47.42 ng/ml



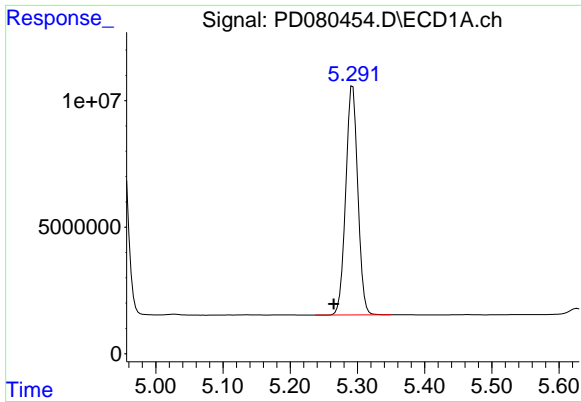
#21 Endrin ketone  
R.T.: 6.864 min  
Delta R.T.: -0.003 min  
Response: 161510576  
Conc: 51.68 ng/ml



#22 Mirex  
R.T.: 8.156 min  
Delta R.T.: -0.002 min  
Response: 73621096  
Conc: 45.00 ng/ml

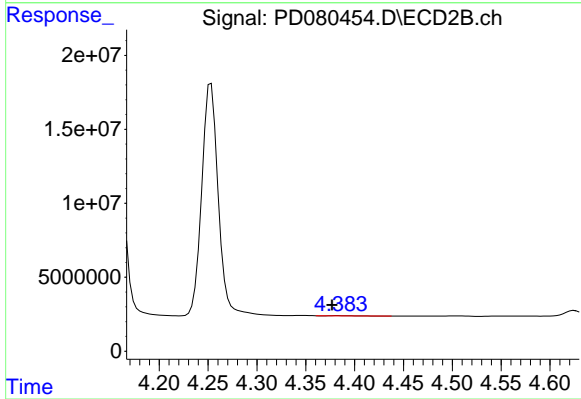


#22 Mirex  
R.T.: 7.048 min  
Delta R.T.: -0.004 min  
Response: 120072340  
Conc: 49.61 ng/ml



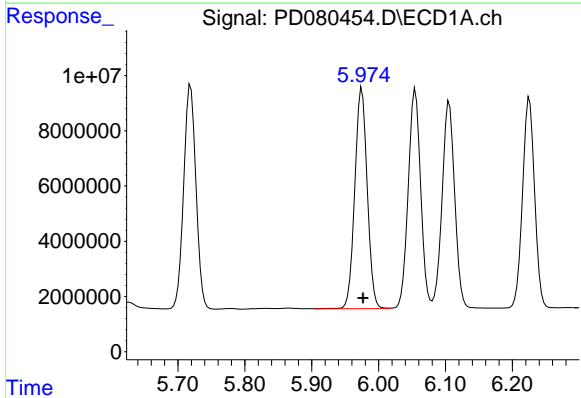
#24 Chlordane-2

R.T.: 5.293 min  
Delta R.T.: 0.028 min  
Response: 113061655  
Conc: 1479.14 ng/ml



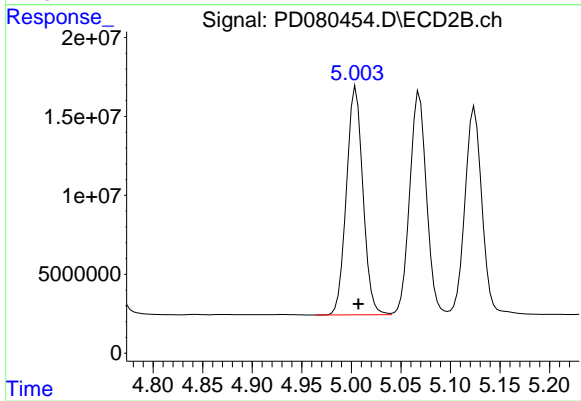
#24 Chlordane-2

R.T.: 4.384 min  
Delta R.T.: 0.007 min  
Response: 173042  
Conc: 1.51 ng/ml



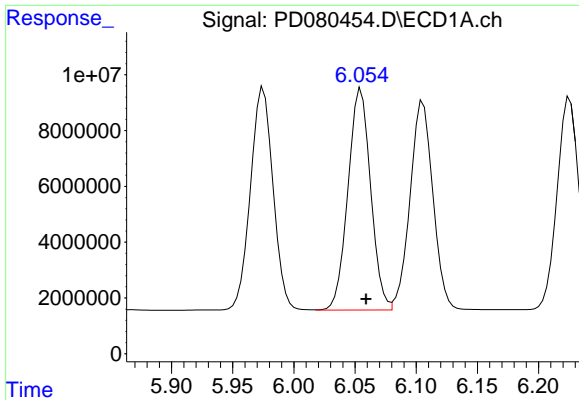
#25 Chlordane-3

R.T.: 5.975 min  
Delta R.T.: -0.002 min  
Response: 103132485  
Conc: 341.60 ng/ml

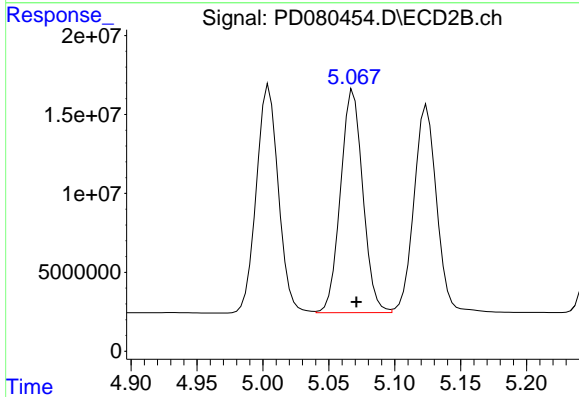


#25 Chlordane-3

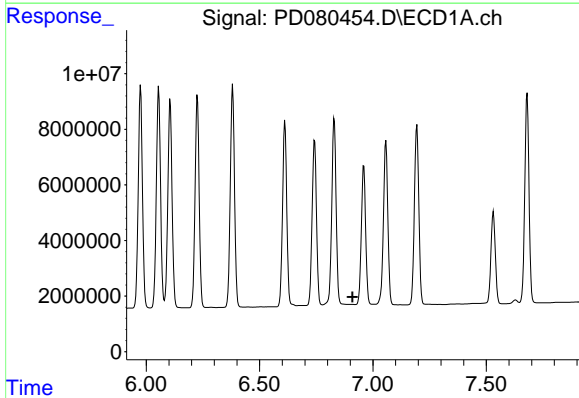
R.T.: 5.005 min  
Delta R.T.: -0.002 min  
Response: 167709866  
Conc: 532.33 ng/ml



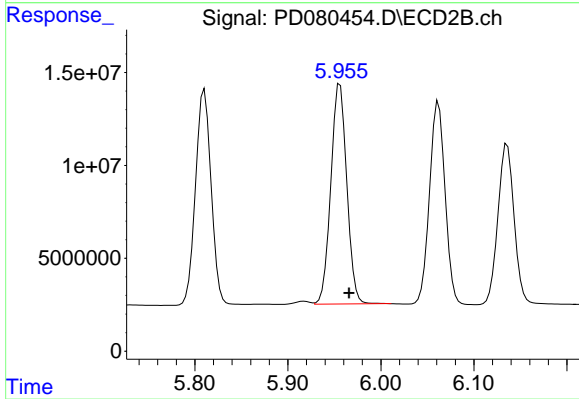
#26 Chlordane-4  
R.T.: 6.055 min  
Delta R.T.: -0.004 min  
Response: 102270446  
Conc: 282.40 ng/ml



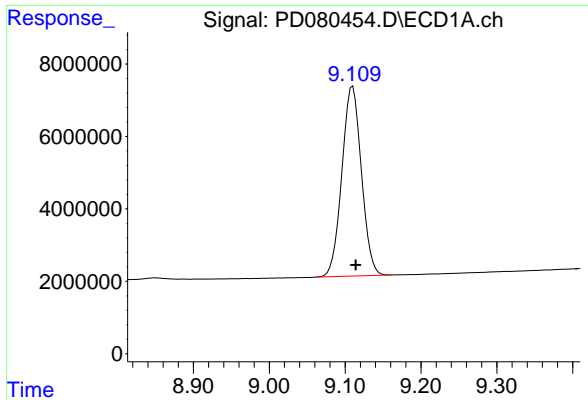
#26 Chlordane-4  
R.T.: 5.069 min  
Delta R.T.: -0.003 min  
Response: 166226730  
Conc: 564.98 ng/ml



#27 Chlordane-5  
R.T.: 0.000 min  
Exp R.T. : 6.910 min  
Response: 0  
Conc: N.D.



#27 Chlordane-5  
R.T.: 5.956 min  
Delta R.T.: -0.010 min  
Response: 141470589  
Conc: 1245.25 ng/ml



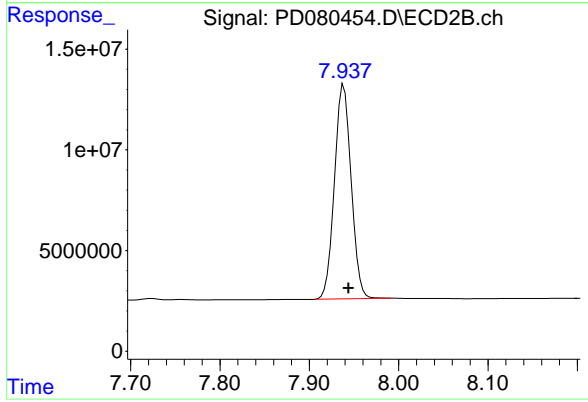
#28 Decachlorobiphenyl

R.T.: 9.110 min

Delta R.T.: -0.004 min

Response: 93663997

Conc: 46.27 ng/ml



#28 Decachlorobiphenyl

R.T.: 7.939 min

Delta R.T.: -0.005 min

Response: 138249073

Conc: 49.04 ng/ml