

Data Path : Z:\pestpcbsrv\HPCHEM1\ECD\_D\Data\PD122623\  
 Data File : PD080451.D  
 Signal(s) : Signal #1: ECD1A.ch Signal #2: ECD2B.ch  
 Acq On : 25 Dec 2023 13:32  
 Operator : AR\AJ  
 Sample : HEXANE  
 Misc :  
 ALS Vial : 1 Sample Multiplier: 1

**Instrument :**  
 ECD\_D  
**ClientSampleId :**  
 HEXANE

Integration File signal 1: autoint1.e  
 Integration File signal 2: autoint2.e  
 Quant Time: Dec 25 23:18:06 2023  
 Quant Method : Z:\pestpcbsrv\HPCHEM1\ECD\_D\Method\PD120623.M  
 Quant Title : GC Extractables  
 QLast Update : Wed Dec 06 14:11:45 2023  
 Response via : Initial Calibration  
 Integrator: ChemStation

Volume Inj. : 1 µl  
 Signal #1 Phase : ZB-MR1 Signal #2 Phase: ZB-MR2  
 Signal #1 Info : 30M x 0.32mm x0.5 Signal #2 Info : 30M x 0.32mm x 0.25µm

Compound	RT#1	RT#2	Resp#1	Resp#2	ng/ml	ng/ml
----------	------	------	--------	--------	-------	-------

-----  
 System Monitoring Compounds

Target Compounds  
 -----

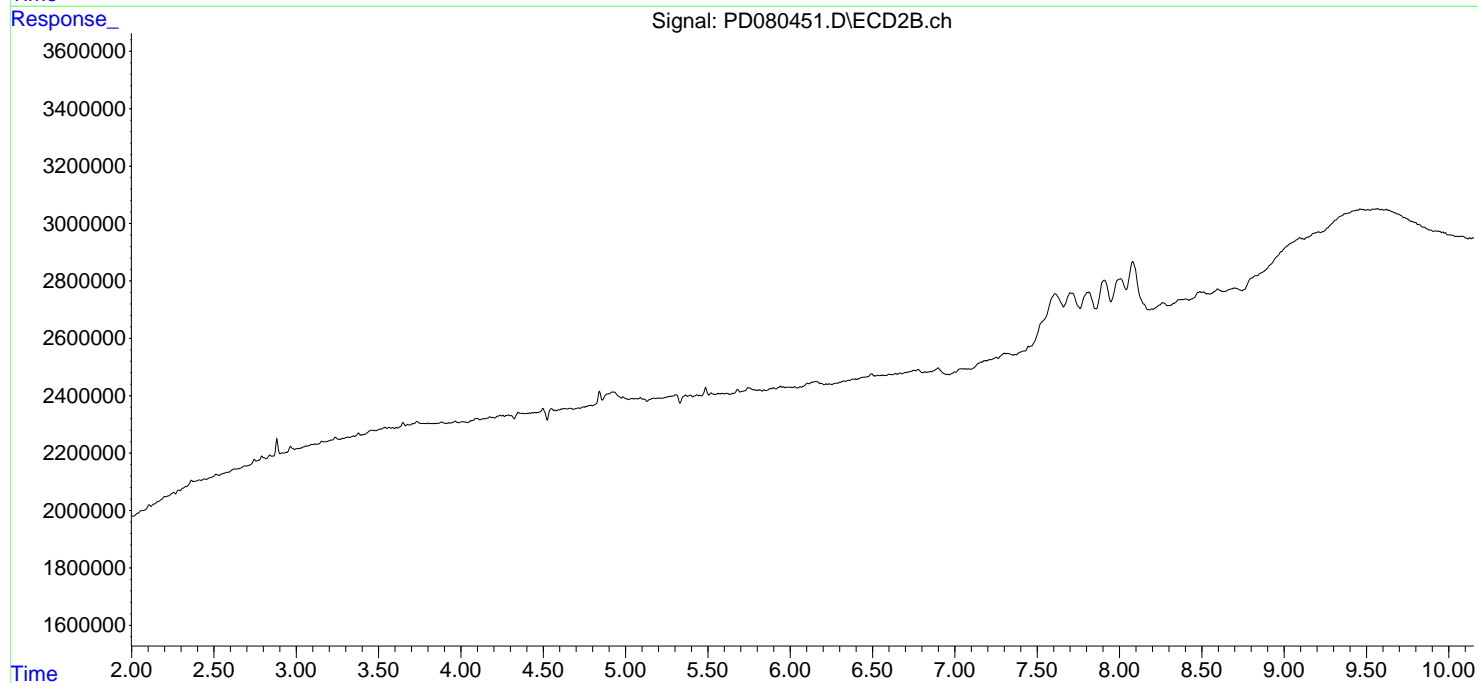
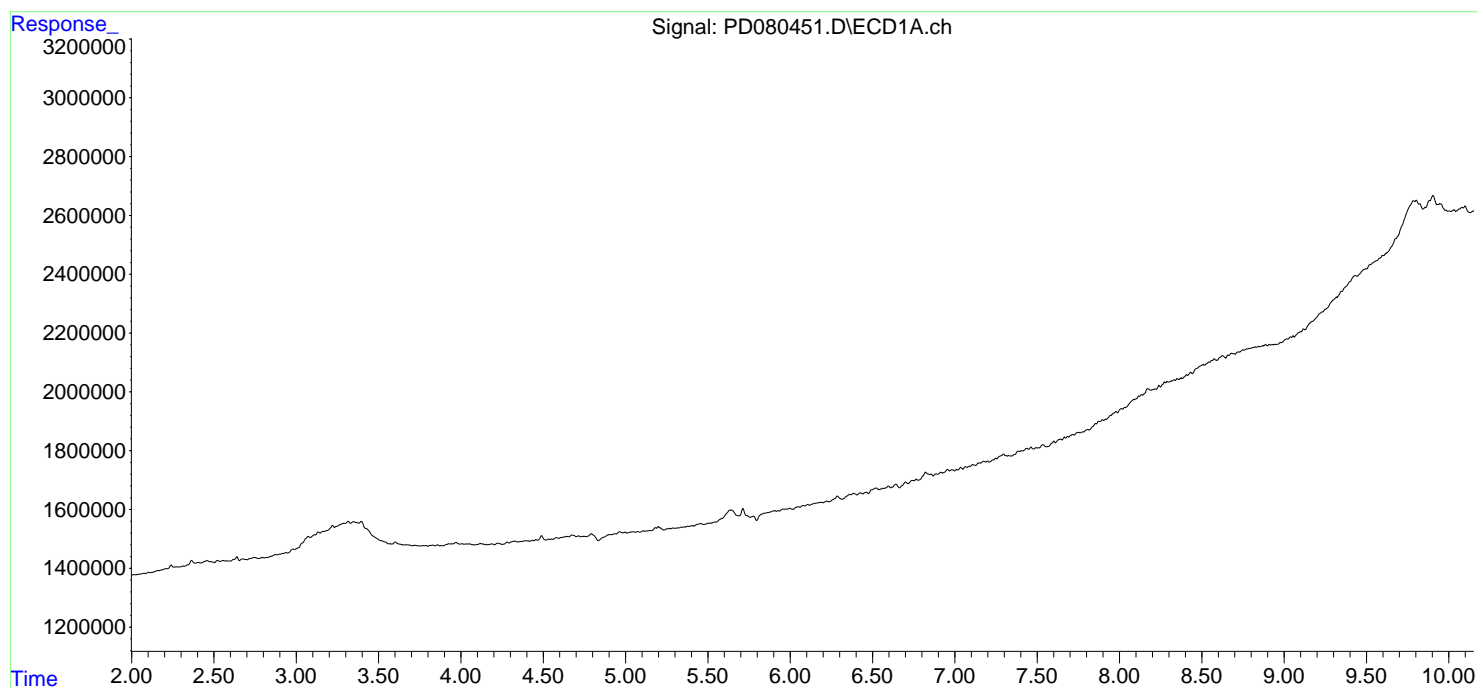
(f)=RT Delta > 1/2 Window (#)=Amounts differ by > 25% (m)=manual int.

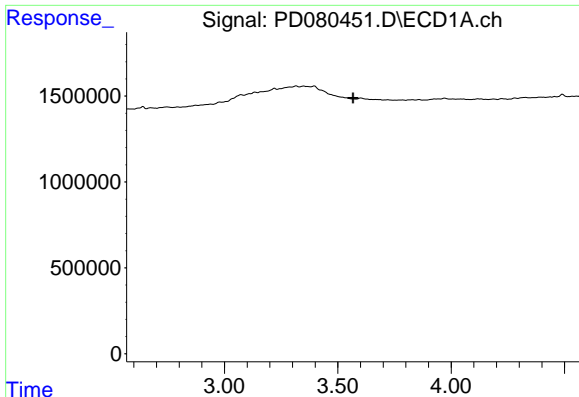
Data Path : Z:\pestpcbsrv\HPCHEM1\ECD\_D\Data\PD122623\  
Data File : PD080451.D  
Signal(s) : Signal #1: ECD1A.ch Signal #2: ECD2B.ch  
Acq On : 25 Dec 2023 13:32  
Operator : AR\AJ  
Sample : HEXANE  
Misc :  
ALS Vial : 1 Sample Multiplier: 1

Instrument :  
ECD\_D  
ClientSampleId :  
HEXANE

Integration File signal 1: autoint1.e  
Integration File signal 2: autoint2.e  
Quant Time: Dec 25 23:18:06 2023  
Quant Method : Z:\pestpcbsrv\HPCHEM1\ECD\_D\Method\PD120623.M  
Quant Title : GC Extractables  
QLast Update : Wed Dec 06 14:11:45 2023  
Response via : Initial Calibration  
Integrator: ChemStation

Volume Inj. : 1  $\mu$ l  
Signal #1 Phase : ZB-MR1 Signal #2 Phase: ZB-MR2  
Signal #1 Info : 30M x 0.32mm x 0.5 Signal #2 Info : 30M x 0.32mm x 0.25 $\mu$ m

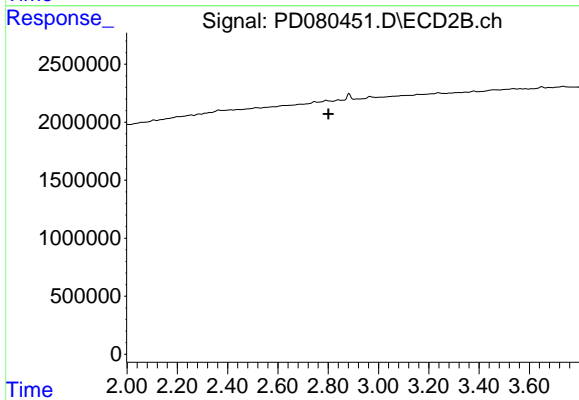




#1 Tetrachloro-m-xylene

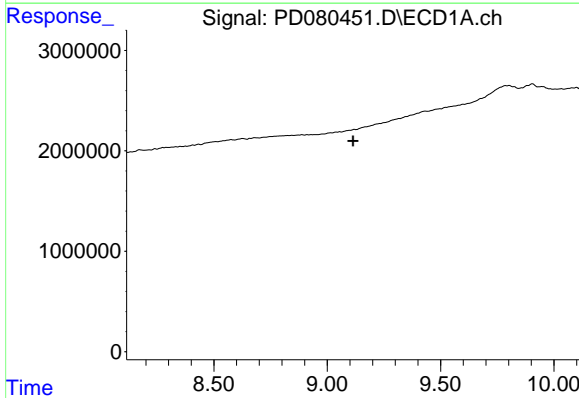
R.T.: 0.000 min  
 Exp R.T. : 3.567 min  
 Response: 0  
 Conc: N.D.

Instrument :  
 ECD\_D  
 ClientSampleId :  
 HEXANE



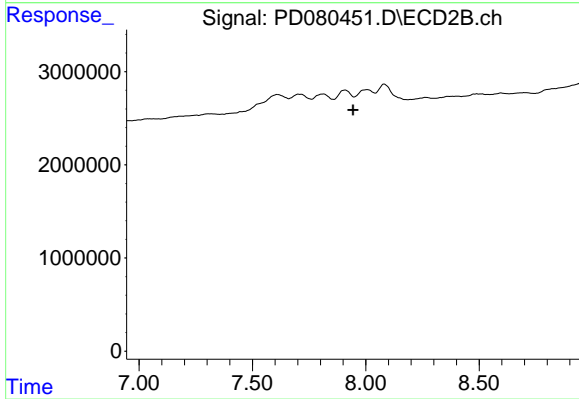
#1 Tetrachloro-m-xylene

R.T.: 0.000 min  
 Exp R.T. : 2.801 min  
 Response: 0  
 Conc: N.D.



#28 Decachlorobiphenyl

R.T.: 0.000 min  
 Exp R.T. : 9.114 min  
 Response: 0  
 Conc: N.D.



#28 Decachlorobiphenyl

R.T.: 0.000 min  
 Exp R.T. : 7.944 min  
 Response: 0  
 Conc: N.D.