

Data Path : Z:\pestpcbsrv\HPCHEM1\ECD\_D\Data\PD122623\  
 Data File : PD080452.D  
 Signal(s) : Signal #1: ECD1A.ch Signal #2: ECD2B.ch  
 Acq On : 25 Dec 2023 14:33  
 Operator : AR\AJ  
 Sample : I.BLK  
 Misc :  
 ALS Vial : 2 Sample Multiplier: 1

Instrument :  
 ECD\_D  
 ClientSampleId :  
 I.BLK

Integration File signal 1: autoint1.e  
 Integration File signal 2: autoint2.e  
 Quant Time: Dec 25 23:18:31 2023  
 Quant Method : Z:\pestpcbsrv\HPCHEM1\ECD\_D\Method\PD120623.M  
 Quant Title : GC Extractables  
 QLast Update : Wed Dec 06 14:11:45 2023  
 Response via : Initial Calibration  
 Integrator: ChemStation

Volume Inj. : 1 µl  
 Signal #1 Phase : ZB-MR1 Signal #2 Phase: ZB-MR2  
 Signal #1 Info : 30M x 0.32mm x0.5 Signal #2 Info : 30M x 0.32mm x 0.25µm

Compound	RT#1	RT#2	Resp#1	Resp#2	ng/ml	ng/ml
-----						
System Monitoring Compounds						
1) SA Tetrachlo...	3.569	2.798	24364601	42030578	16.165	16.720
28) SA Decachlor...	9.112	7.939	32164089	47256547	15.890	16.764

Target Compounds

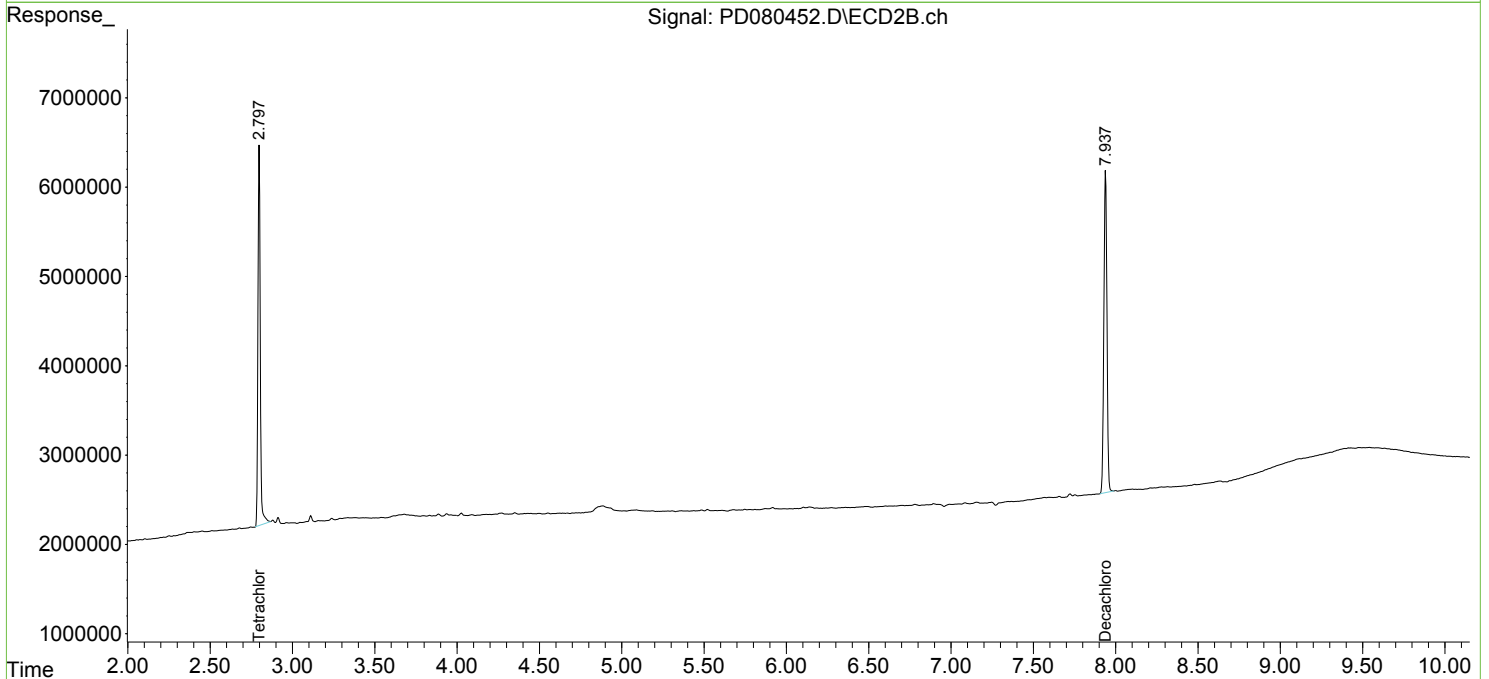
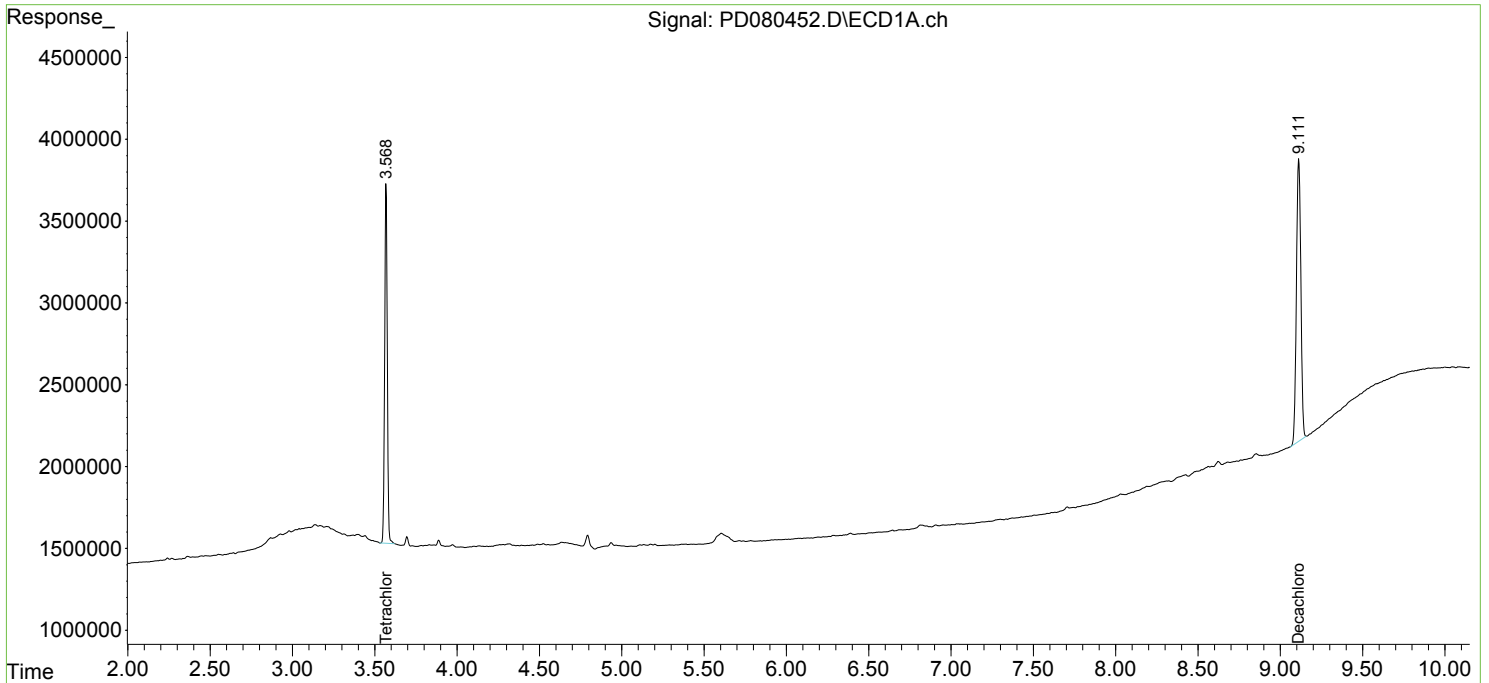
(f)=RT Delta > 1/2 Window (#)=Amounts differ by > 25% (m)=manual int.

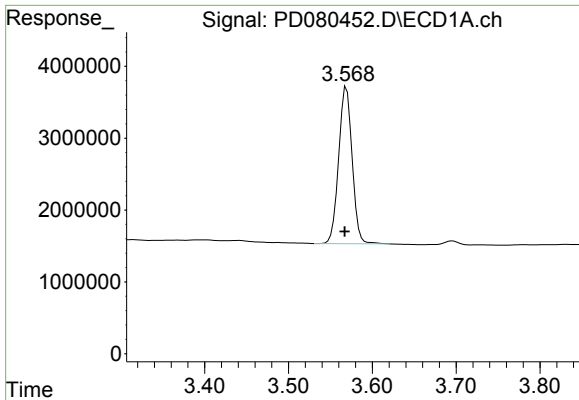
Data Path : Z:\pestpcbsrv\HPCHEM1\ECD\_D\Data\PD122623\  
 Data File : PD080452.D  
 Signal(s) : Signal #1: ECD1A.ch Signal #2: ECD2B.ch  
 Acq On : 25 Dec 2023 14:33  
 Operator : AR\AJ  
 Sample : I.BLK  
 Misc :  
 ALS Vial : 2 Sample Multiplier: 1

Instrument :  
 ECD\_D  
 ClientSampleId :  
 I.BLK

Integration File signal 1: autoint1.e  
 Integration File signal 2: autoint2.e  
 Quant Time: Dec 25 23:18:31 2023  
 Quant Method : Z:\pestpcbsrv\HPCHEM1\ECD\_D\Method\PD120623.M  
 Quant Title : GC Extractables  
 QLast Update : Wed Dec 06 14:11:45 2023  
 Response via : Initial Calibration  
 Integrator: ChemStation

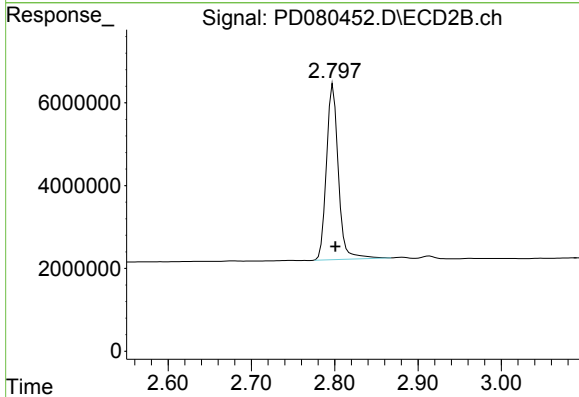
Volume Inj. : 1 µl  
 Signal #1 Phase : ZB-MR1 Signal #2 Phase: ZB-MR2  
 Signal #1 Info : 30M x 0.32mm x0.5 Signal #2 Info : 30M x 0.32mm x 0.25µm



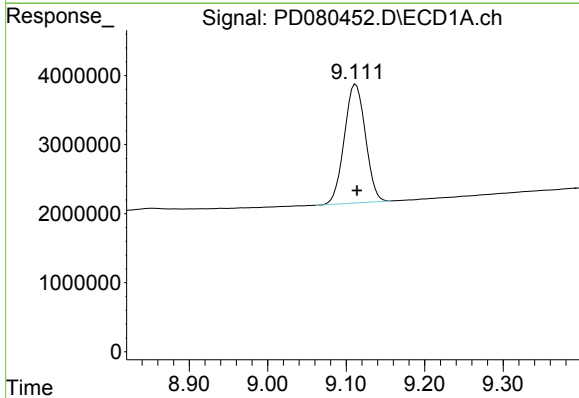


#1 Tetrachloro-m-xylene  
 R.T.: 3.569 min  
 Delta R.T.: 0.002 min  
 Response: 24364601  
 Conc: 16.17 ng/ml

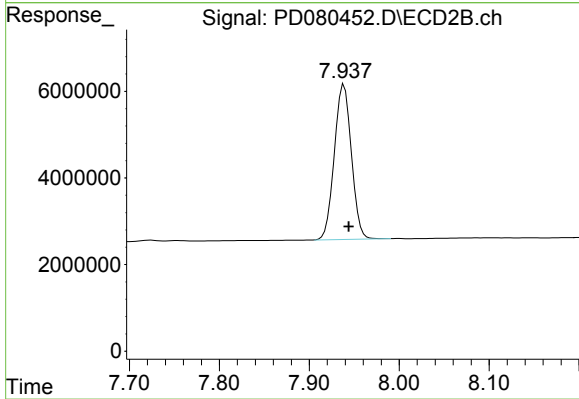
Instrument :  
 ECD\_D  
 ClientSampleId :  
 I.BLK



#1 Tetrachloro-m-xylene  
 R.T.: 2.798 min  
 Delta R.T.: -0.002 min  
 Response: 42030578  
 Conc: 16.72 ng/ml



#28 Decachlorobiphenyl  
 R.T.: 9.112 min  
 Delta R.T.: -0.002 min  
 Response: 32164089  
 Conc: 15.89 ng/ml



#28 Decachlorobiphenyl  
 R.T.: 7.939 min  
 Delta R.T.: -0.005 min  
 Response: 47256547  
 Conc: 16.76 ng/ml