

Data Path : Z:\pestpcbsrv\HPCHEM1\ECD_D\Data\PD122623\
 Data File : PD080453.D
 Signal(s) : Signal #1: ECD1A.ch Signal #2: ECD2B.ch
 Acq On : 25 Dec 2023 14:46
 Operator : AR\AJ
 Sample : PEM
 Misc :
 ALS Vial : 3 Sample Multiplier: 1

Instrument :
 ECD_D
 ClientSampleId :
 PEM

Integration File signal 1: autoint1.e
 Integration File signal 2: autoint2.e
 Quant Time: Dec 25 23:18:52 2023
 Quant Method : Z:\pestpcbsrv\HPCHEM1\ECD_D\Method\PD120623.M
 Quant Title : GC Extractables
 QLast Update : Wed Dec 06 14:11:45 2023
 Response via : Initial Calibration
 Integrator: ChemStation

Volume Inj. : 1 µl
 Signal #1 Phase : ZB-MR1 Signal #2 Phase: ZB-MR2
 Signal #1 Info : 30M x 0.32mm x0.5 Signal #2 Info : 30M x 0.32mm x 0.25µm

Compound	RT#1	RT#2	Resp#1	Resp#2	ng/ml	ng/ml

System Monitoring Compounds						
1) SA Tetrachlo...	3.566	2.799	28152165	48157737	18.678	19.157
28) SA Decachlor...	9.110	7.938	36147643	53191594	17.858	18.870
Target Compounds						
2) A alpha-BHC	4.023	3.301	22380273	37443988	8.910	9.793
3) MA gamma-BHC...	4.356	3.630	21684736	35535511	9.153	9.779
6) B beta-BHC	4.550	3.925	10420685	17496882	10.413	11.334
12) B 4,4'-DDE	6.226	5.259	336967	829376	0.168	0.275 #
14) MA Endrin	6.611	5.663	74318228	127.4E6	40.981	45.321
16) A 4,4'-DDD	6.742	5.810	2971162	4798249	1.774	1.863
17) MA 4,4'-DDT	7.058	6.061	148.5E6	244.4E6	83.492	96.190
18) B Endrin al...	6.959	6.136	2889995	5683363	2.017	2.768 #
20) A Methoxychlor	7.531	6.636	195.8E6	313.2E6	198.101	214.197
21) B Endrin ke...	7.679	6.863	6221058	11489495	3.005	3.676

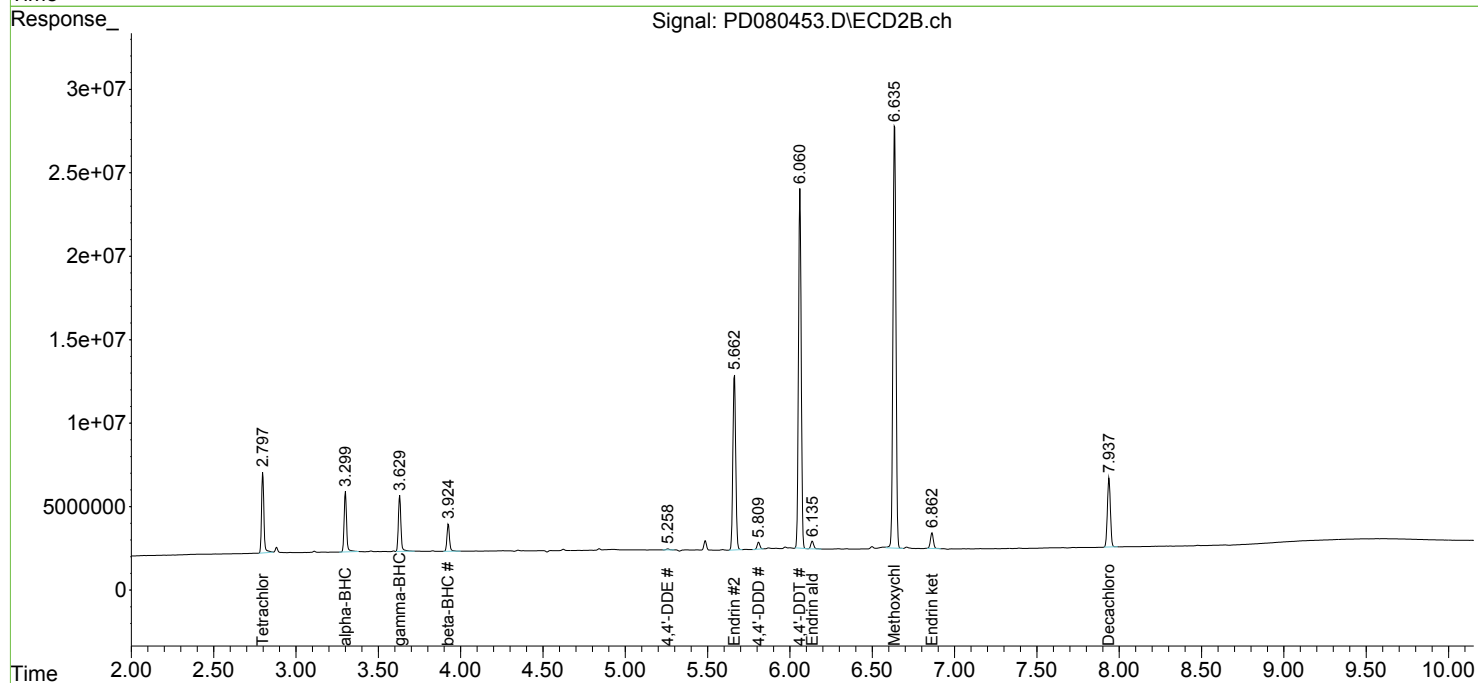
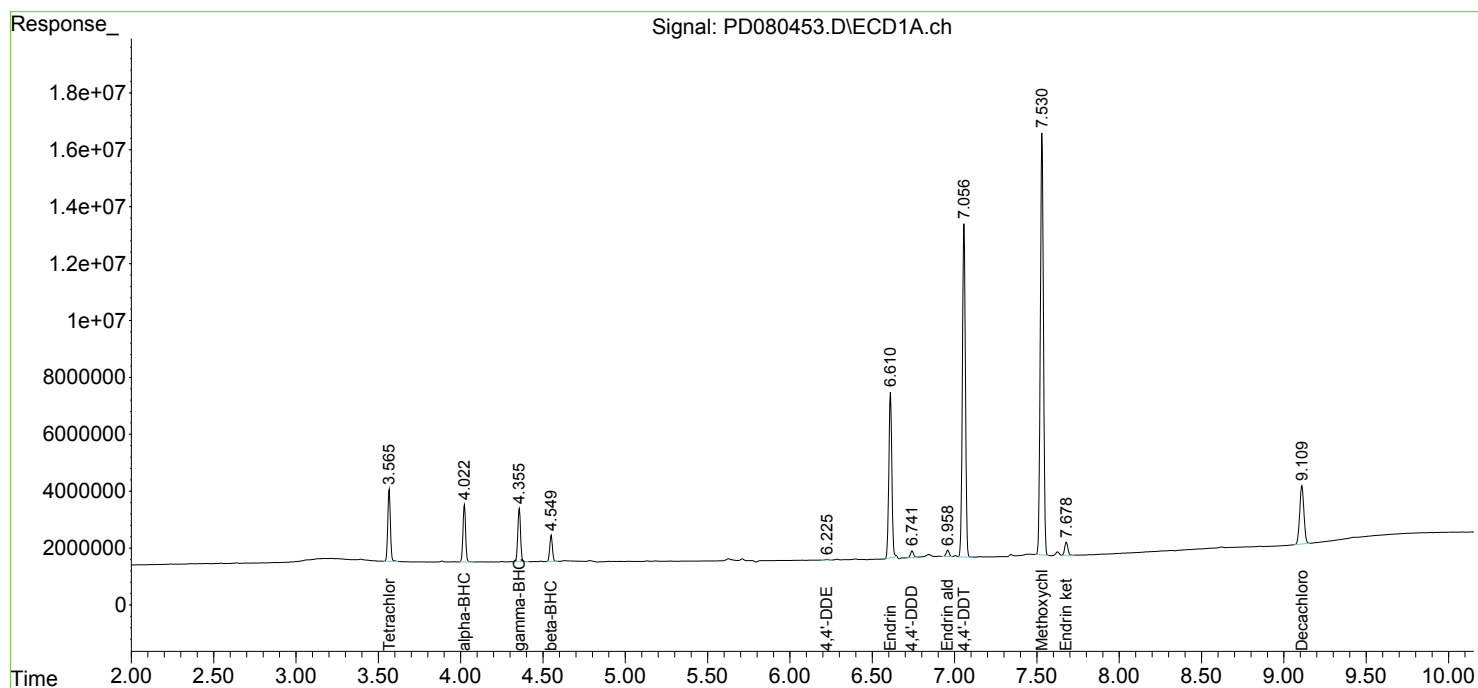
(f)=RT Delta > 1/2 Window (#)=Amounts differ by > 25% (m)=manual int.

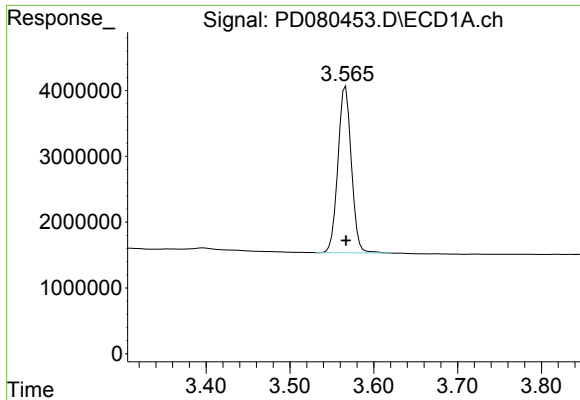
Data Path : Z:\pestpcbsrv\HPCHEM1\ECD_D\Data\PD122623\
 Data File : PD080453.D
 Signal(s) : Signal #1: ECD1A.ch Signal #2: ECD2B.ch
 Acq On : 25 Dec 2023 14:46
 Operator : AR\AJ
 Sample : PEM
 Misc :
 ALS Vial : 3 Sample Multiplier: 1

Instrument :
 ECD_D
 ClientSampleId :
 PEM

Integration File signal 1: autoint1.e
 Integration File signal 2: autoint2.e
 Quant Time: Dec 25 23:18:52 2023
 Quant Method : Z:\pestpcbsrv\HPCHEM1\ECD_D\Method\PD120623.M
 Quant Title : GC Extractables
 QLast Update : Wed Dec 06 14:11:45 2023
 Response via : Initial Calibration
 Integrator: ChemStation

Volume Inj. : 1 µl
 Signal #1 Phase : ZB-MR1 Signal #2 Phase: ZB-MR2
 Signal #1 Info : 30M x 0.32mm x0.5 Signal #2 Info : 30M x 0.32mm x 0.25µm

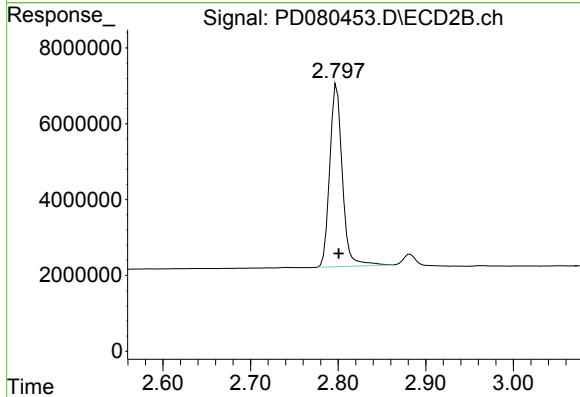




#1 Tetrachloro-m-xylene

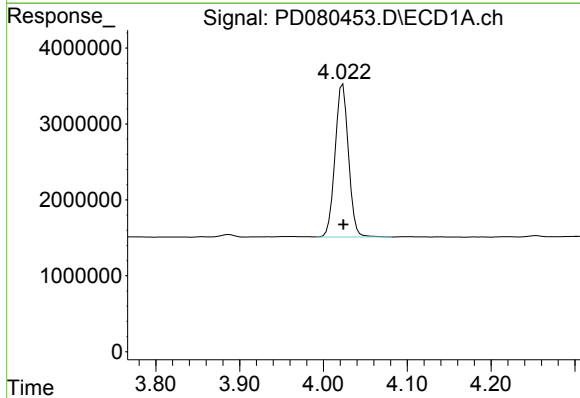
R.T.: 3.566 min
 Delta R.T.: 0.000 min
 Response: 28152165
 Conc: 18.68 ng/ml

Instrument :
 ECD_D
 ClientSampleId :
 PEM



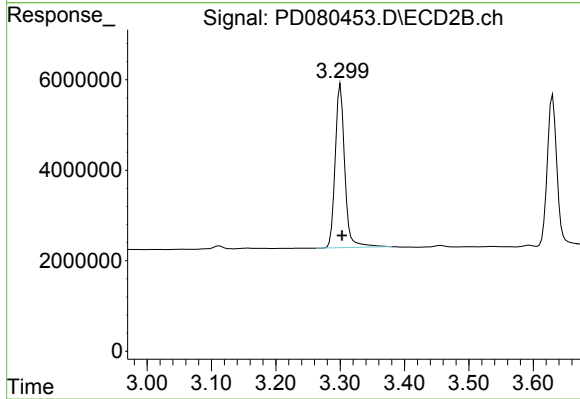
#1 Tetrachloro-m-xylene

R.T.: 2.799 min
 Delta R.T.: -0.002 min
 Response: 48157737
 Conc: 19.16 ng/ml



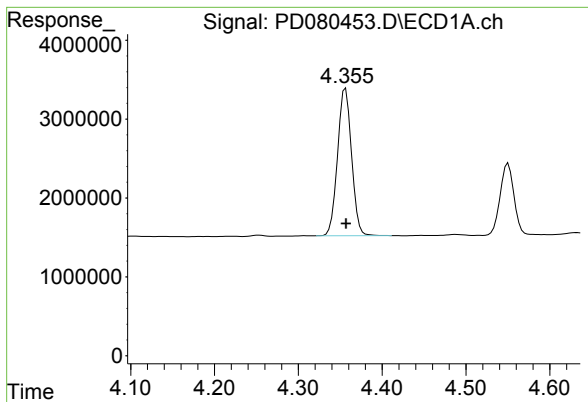
#2 alpha-BHC

R.T.: 4.023 min
 Delta R.T.: 0.000 min
 Response: 22380273
 Conc: 8.91 ng/ml



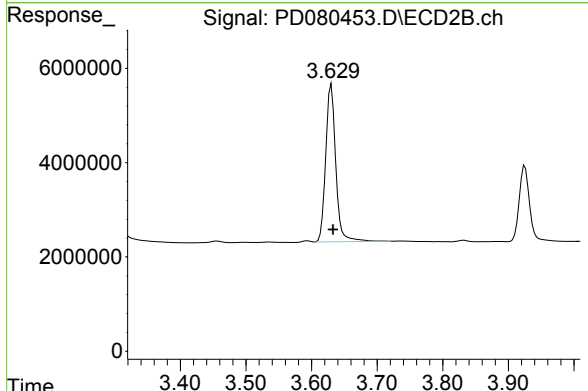
#2 alpha-BHC

R.T.: 3.301 min
 Delta R.T.: -0.003 min
 Response: 37443988
 Conc: 9.79 ng/ml

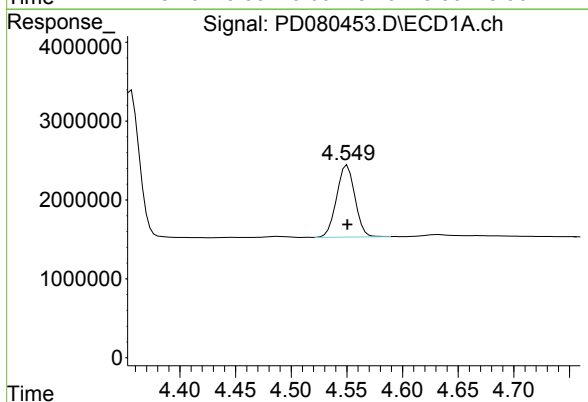


#3 gamma-BHC (Lindane)
 R.T.: 4.356 min
 Delta R.T.: 0.000 min
 Response: 21684736
 Conc: 9.15 ng/ml

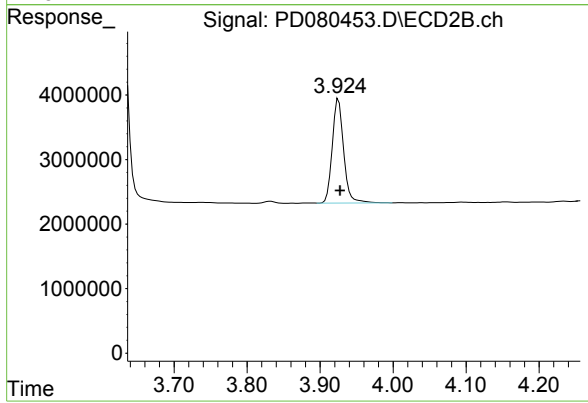
Instrument :
 ECD_D
 ClientSampleId :
 PEM



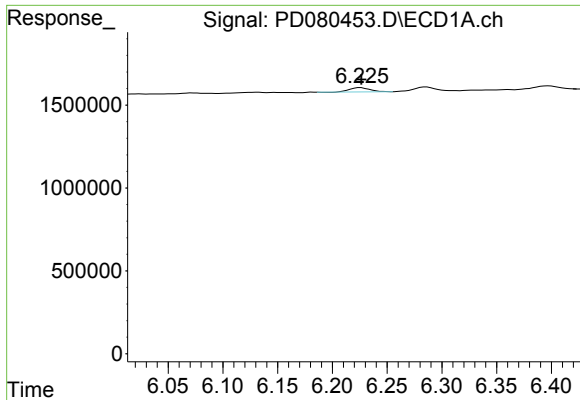
#3 gamma-BHC (Lindane)
 R.T.: 3.630 min
 Delta R.T.: -0.002 min
 Response: 35535511
 Conc: 9.78 ng/ml



#6 beta-BHC
 R.T.: 4.550 min
 Delta R.T.: 0.000 min
 Response: 10420685
 Conc: 10.41 ng/ml

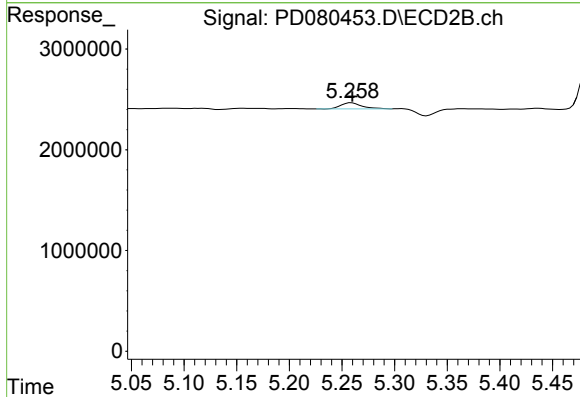


#6 beta-BHC
 R.T.: 3.925 min
 Delta R.T.: -0.002 min
 Response: 17496882
 Conc: 11.33 ng/ml

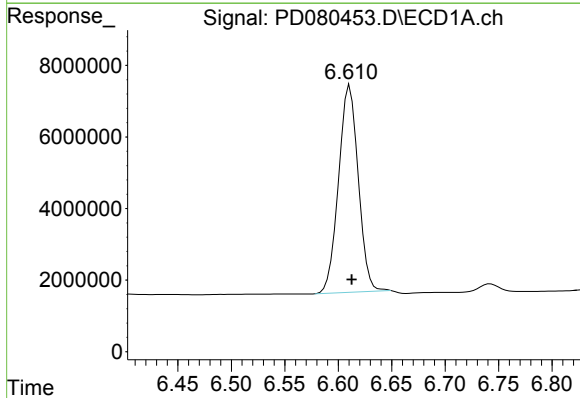


#12 4,4'-DDE
 R.T.: 6.226 min
 Delta R.T.: 0.000 min
 Response: 336967
 Conc: 0.17 ng/ml

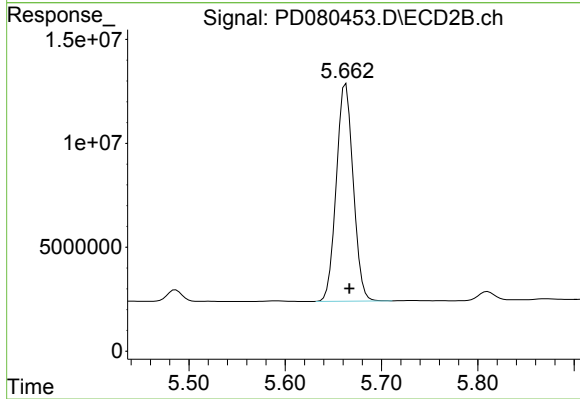
Instrument :
 ECD_D
 ClientSampleId :
 PEM



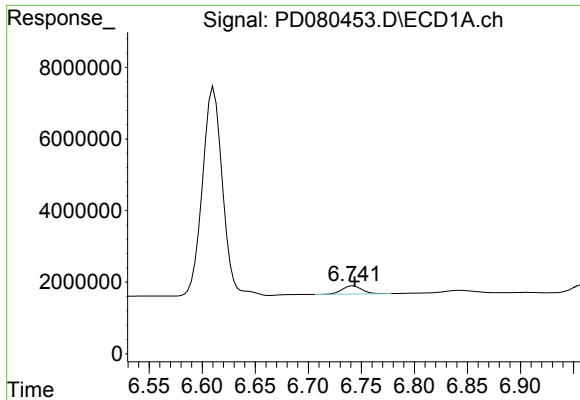
#12 4,4'-DDE
 R.T.: 5.259 min
 Delta R.T.: 0.000 min
 Response: 829376
 Conc: 0.28 ng/ml



#14 Endrin
 R.T.: 6.611 min
 Delta R.T.: -0.002 min
 Response: 74318228
 Conc: 40.98 ng/ml



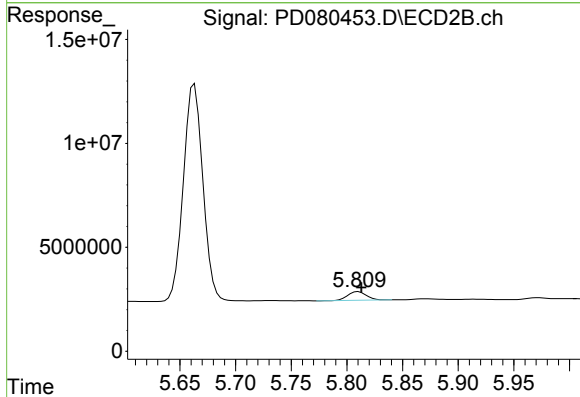
#14 Endrin
 R.T.: 5.663 min
 Delta R.T.: -0.003 min
 Response: 127353780
 Conc: 45.32 ng/ml



#16 4,4'-DDD

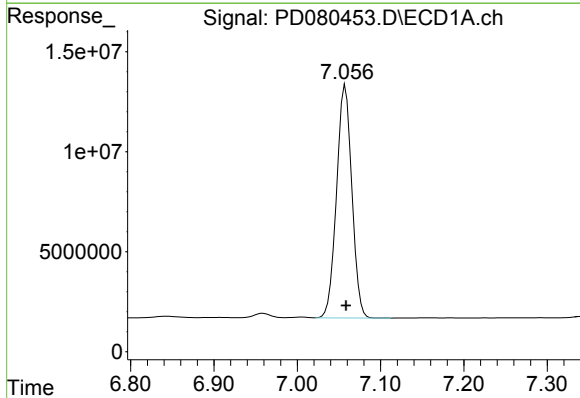
R.T.: 6.742 min
 Delta R.T.: -0.001 min
 Response: 2971162
 Conc: 1.77 ng/ml

Instrument :
 ECD_D
 ClientSampleId :
 PEM



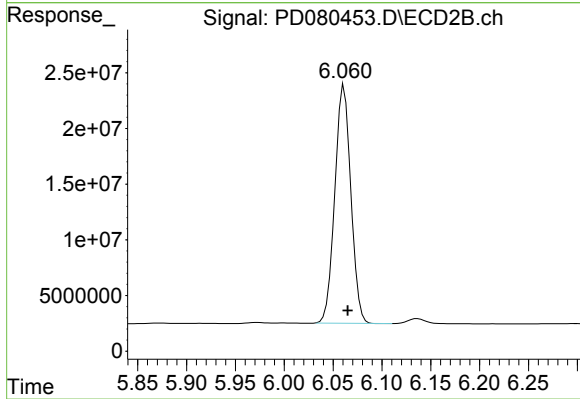
#16 4,4'-DDD

R.T.: 5.810 min
 Delta R.T.: -0.003 min
 Response: 4798249
 Conc: 1.86 ng/ml



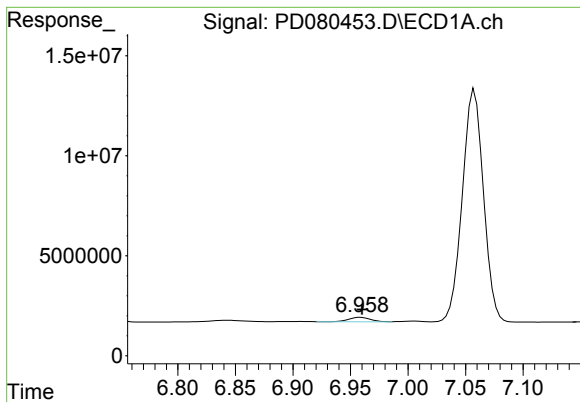
#17 4,4'-DDT

R.T.: 7.058 min
 Delta R.T.: 0.000 min
 Response: 148543180
 Conc: 83.49 ng/ml



#17 4,4'-DDT

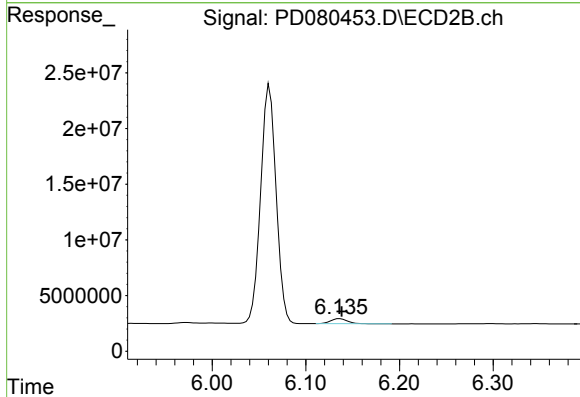
R.T.: 6.061 min
 Delta R.T.: -0.004 min
 Response: 244378193
 Conc: 96.19 ng/ml



#18 Endrin aldehyde

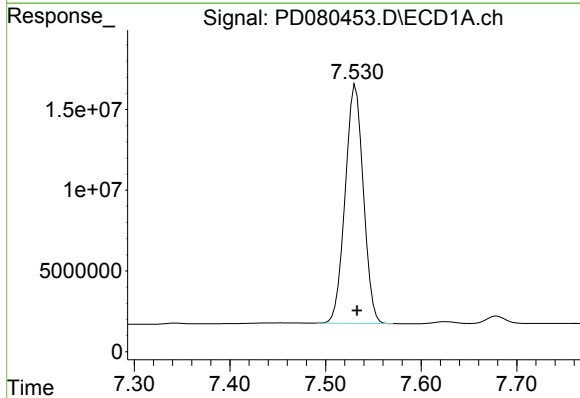
R.T.: 6.959 min
 Delta R.T.: 0.000 min
 Response: 2889995
 Conc: 2.02 ng/ml

Instrument :
 ECD_D
 ClientSampleId :
 PEM



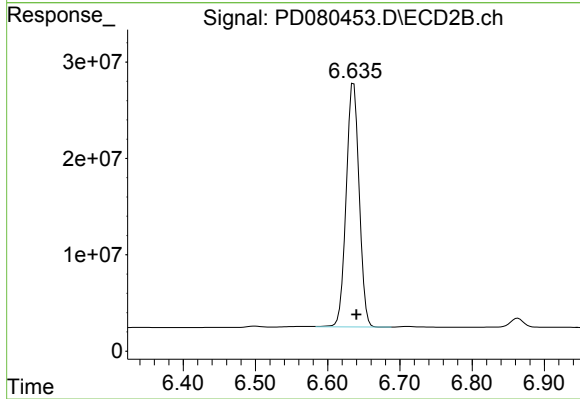
#18 Endrin aldehyde

R.T.: 6.136 min
 Delta R.T.: -0.002 min
 Response: 5683363
 Conc: 2.77 ng/ml



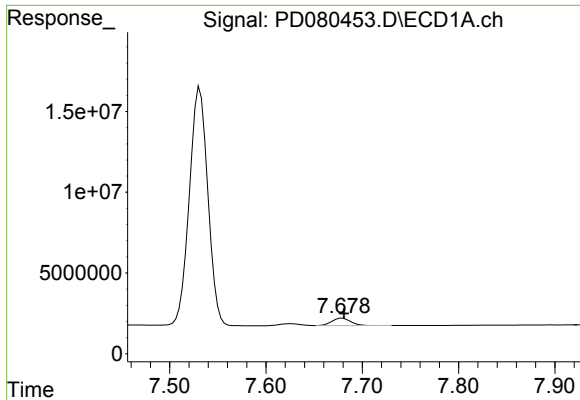
#20 Methoxychlor

R.T.: 7.531 min
 Delta R.T.: -0.002 min
 Response: 195801576
 Conc: 198.10 ng/ml



#20 Methoxychlor

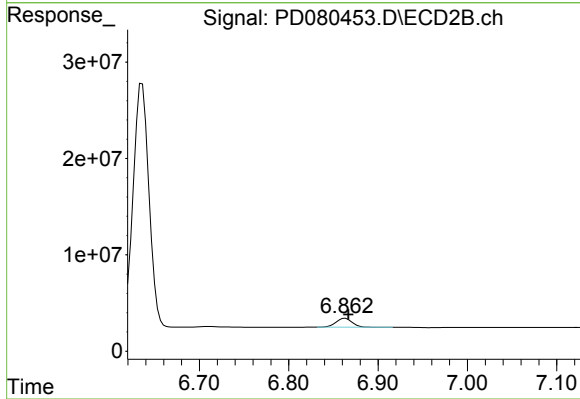
R.T.: 6.636 min
 Delta R.T.: -0.004 min
 Response: 313225059
 Conc: 214.20 ng/ml



#21 Endrin ketone

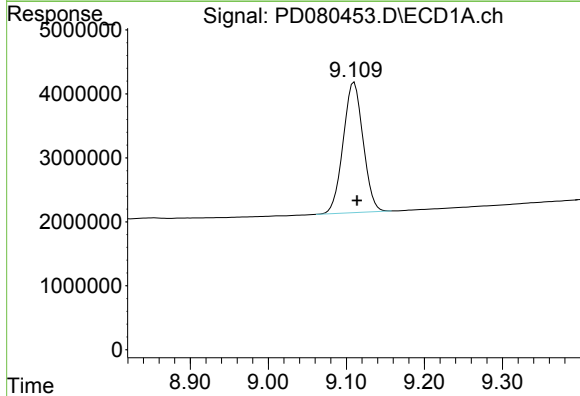
R.T.: 7.679 min
 Delta R.T.: -0.002 min
 Response: 6221058
 Conc: 3.00 ng/ml

Instrument :
 ECD_D
 ClientSampleId :
 PEM



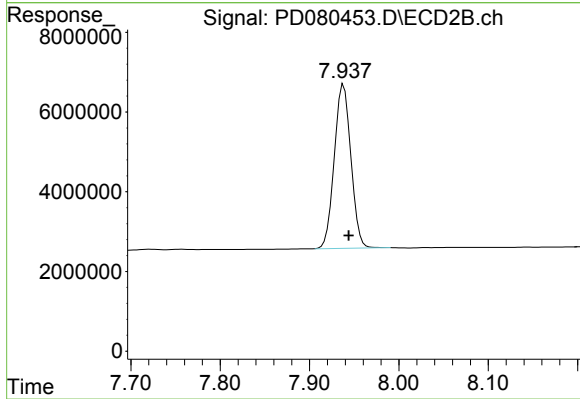
#21 Endrin ketone

R.T.: 6.863 min
 Delta R.T.: -0.003 min
 Response: 11489495
 Conc: 3.68 ng/ml



#28 Decachlorobiphenyl

R.T.: 9.110 min
 Delta R.T.: -0.004 min
 Response: 36147643
 Conc: 17.86 ng/ml



#28 Decachlorobiphenyl

R.T.: 7.938 min
 Delta R.T.: -0.006 min
 Response: 53191594
 Conc: 18.87 ng/ml