

Data Path : Z:\pestpcbsrv\HPCHEM1\ECD_D\Data\PD122623\
 Data File : PD080458.D
 Signal(s) : Signal #1: ECD1A.ch Signal #2: ECD2B.ch
 Acq On : 25 Dec 2023 16:39
 Operator : AR\AJ
 Sample : 05862-11
 Misc :
 ALS Vial : 8 Sample Multiplier: 1

Instrument :
 ECD_D
ClientSampleId :
 WC-SOLIDS-20231213-01

Manual Integrations
APPROVED
 Reviewed By :Abdul Mirza 12/26/2023
 Supervised By :Ankita Jodhani 12/28/2023

Integration File signal 1: autoint1.e
 Integration File signal 2: autoint2.e
 Quant Time: Dec 25 23:20:46 2023
 Quant Method : Z:\pestpcbsrv\HPCHEM1\ECD_D\Method\PD120623.M
 Quant Title : GC Extractables
 QLast Update : Wed Dec 06 14:11:45 2023
 Response via : Initial Calibration
 Integrator: ChemStation

Volume Inj. : 1 µl
 Signal #1 Phase : ZB-MR1 Signal #2 Phase: ZB-MR2
 Signal #1 Info : 30M x 0.32mm x0.5 Signal #2 Info : 30M x 0.32mm x 0.25µm

Compound	RT#1	RT#2	Resp#1	Resp#2	ng/ml	ng/ml

System Monitoring Compounds						
1) SA Tetrachlo...	3.566	2.799	27341369	39787375	18.140m	15.828
28) SA Decachlor...	9.112	7.938	20276136	29305536	10.017	10.396

Target Compounds

 (f)=RT Delta > 1/2 Window (#)=Amounts differ by > 25% (m)=manual int.

Data Path : Z:\pestpcbsrv\HPCHEM1\ECD_D\Data\PD122623\
 Data File : PD080458.D
 Signal(s) : Signal #1: ECD1A.ch Signal #2: ECD2B.ch
 Acq On : 25 Dec 2023 16:39
 Operator : AR\AJ
 Sample : 05862-11
 Misc :
 ALS Vial : 8 Sample Multiplier: 1

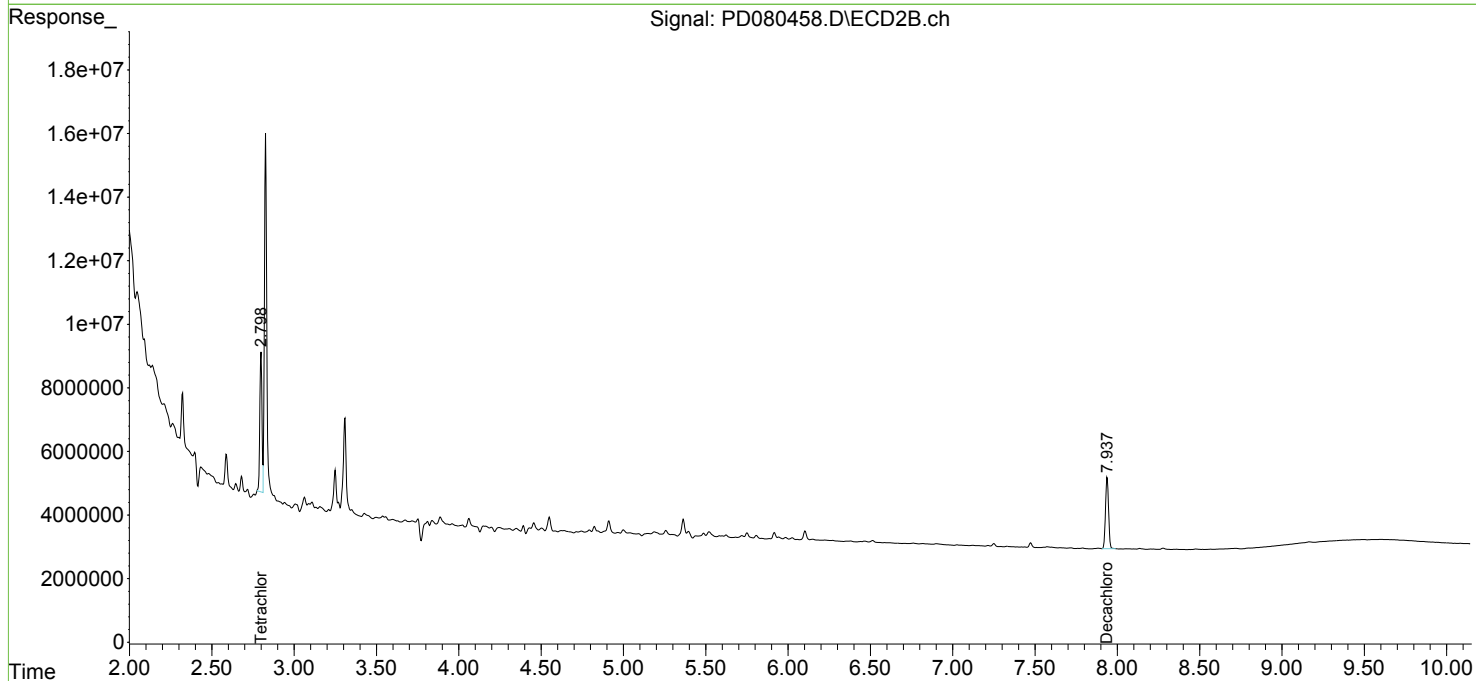
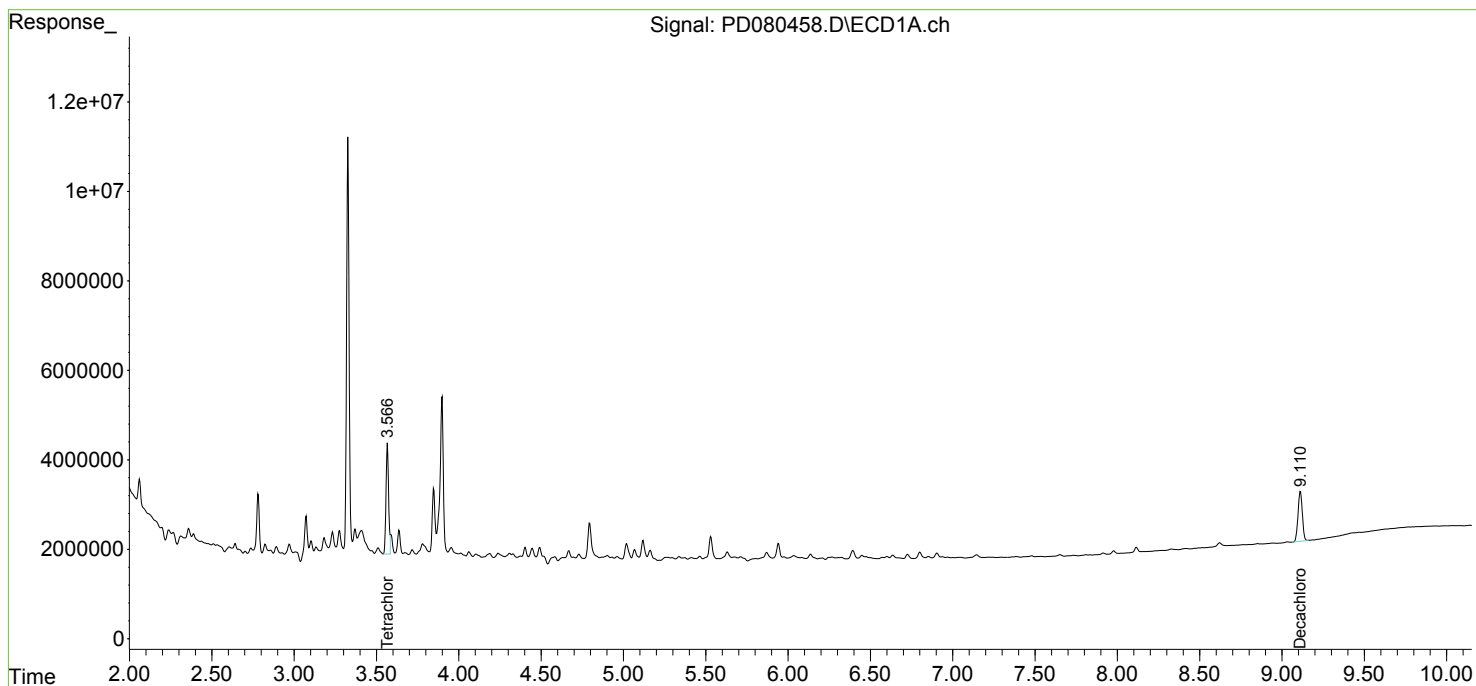
Instrument :
 ECD_D
ClientSampleId :
 WC-SOLIDS-20231213-01

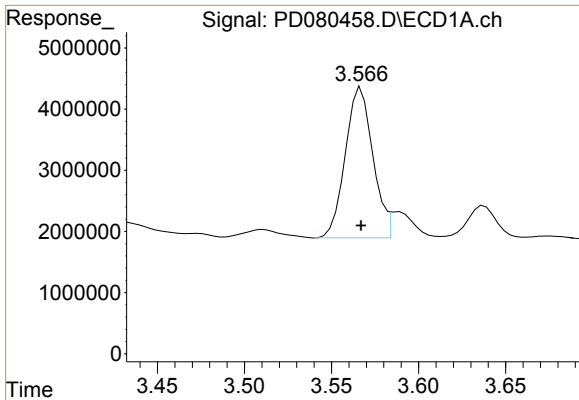
Manual Integrations
APPROVED

Reviewed By :Abdul Mirza 12/26/2023
 Supervised By :Ankita Jodhani 12/28/2023

Integration File signal 1: autoint1.e
 Integration File signal 2: autoint2.e
 Quant Time: Dec 25 23:20:46 2023
 Quant Method : Z:\pestpcbsrv\HPCHEM1\ECD_D\Method\PD120623.M
 Quant Title : GC Extractables
 QLast Update : Wed Dec 06 14:11:45 2023
 Response via : Initial Calibration
 Integrator: ChemStation

Volume Inj. : 1 µl
 Signal #1 Phase : ZB-MR1 Signal #2 Phase: ZB-MR2
 Signal #1 Info : 30M x 0.32mm x0.5 Signal #2 Info : 30M x 0.32mm x 0.25µm





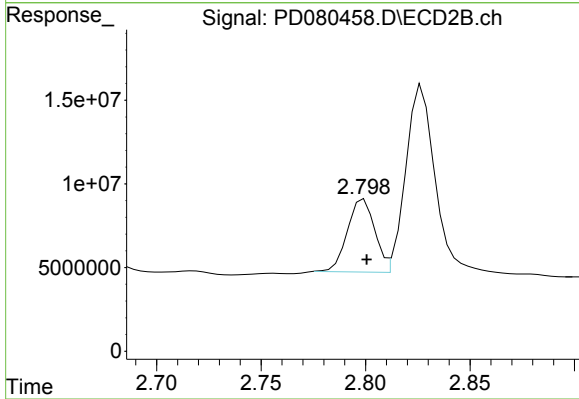
#1 Tetrachloro-m-xylene

R.T.: 3.566 min
 Delta R.T.: -0.001 min
 Response: 27341369
 Conc: 18.14 ng/ml

Instrument : ECD_D
 ClientSampleId : WC-SOLIDS-20231213-01

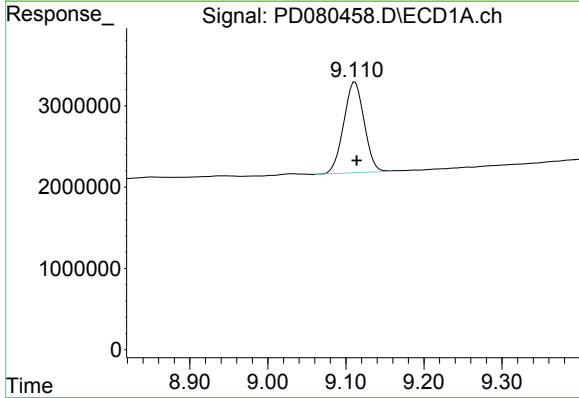
Manual Integrations
 APPROVED

Reviewed By :Abdul Mirza 12/26/2023
 Supervised By :Ankita Jodhani 12/28/2023



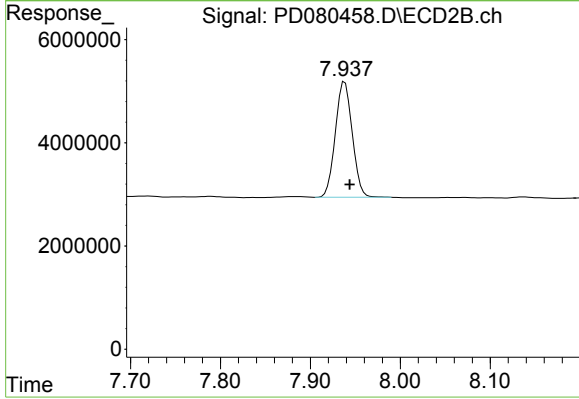
#1 Tetrachloro-m-xylene

R.T.: 2.799 min
 Delta R.T.: -0.001 min
 Response: 39787375
 Conc: 15.83 ng/ml



#28 Decachlorobiphenyl

R.T.: 9.112 min
 Delta R.T.: -0.002 min
 Response: 20276136
 Conc: 10.02 ng/ml



#28 Decachlorobiphenyl

R.T.: 7.938 min
 Delta R.T.: -0.006 min
 Response: 29305536
 Conc: 10.40 ng/ml