

Data Path : Z:\pestpcbsrv\HPCHEM1\ECD_D\Data\PD122623\
 Data File : PD080465.D
 Signal(s) : Signal #1: ECD1A.ch Signal #2: ECD2B.ch
 Acq On : 25 Dec 2023 18:11
 Operator : AR\AJ
 Sample : 05926-04
 Misc :
 ALS Vial : 15 Sample Multiplier: 1

Instrument :
 ECD_D
 ClientSampleId :
 MR-320-0-2

Integration File signal 1: autoint1.e
 Integration File signal 2: autoint2.e
 Quant Time: Dec 25 23:23:29 2023
 Quant Method : Z:\pestpcbsrv\HPCHEM1\ECD_D\Method\PD120623.M
 Quant Title : GC Extractables
 QLast Update : Wed Dec 06 14:11:45 2023
 Response via : Initial Calibration
 Integrator: ChemStation

Volume Inj. : 1 µl
 Signal #1 Phase : ZB-MR1 Signal #2 Phase: ZB-MR2
 Signal #1 Info : 30M x 0.32mm x0.5 Signal #2 Info : 30M x 0.32mm x 0.25µm

Compound	RT#1	RT#2	Resp#1	Resp#2	ng/ml	ng/ml

System Monitoring Compounds						
1) SA Tetrachlo...	3.566	2.799	26346585	44184527	17.480	17.577
28) SA Decachlor...	9.109	7.938	32023946	45956609	15.821	16.303

Target Compounds

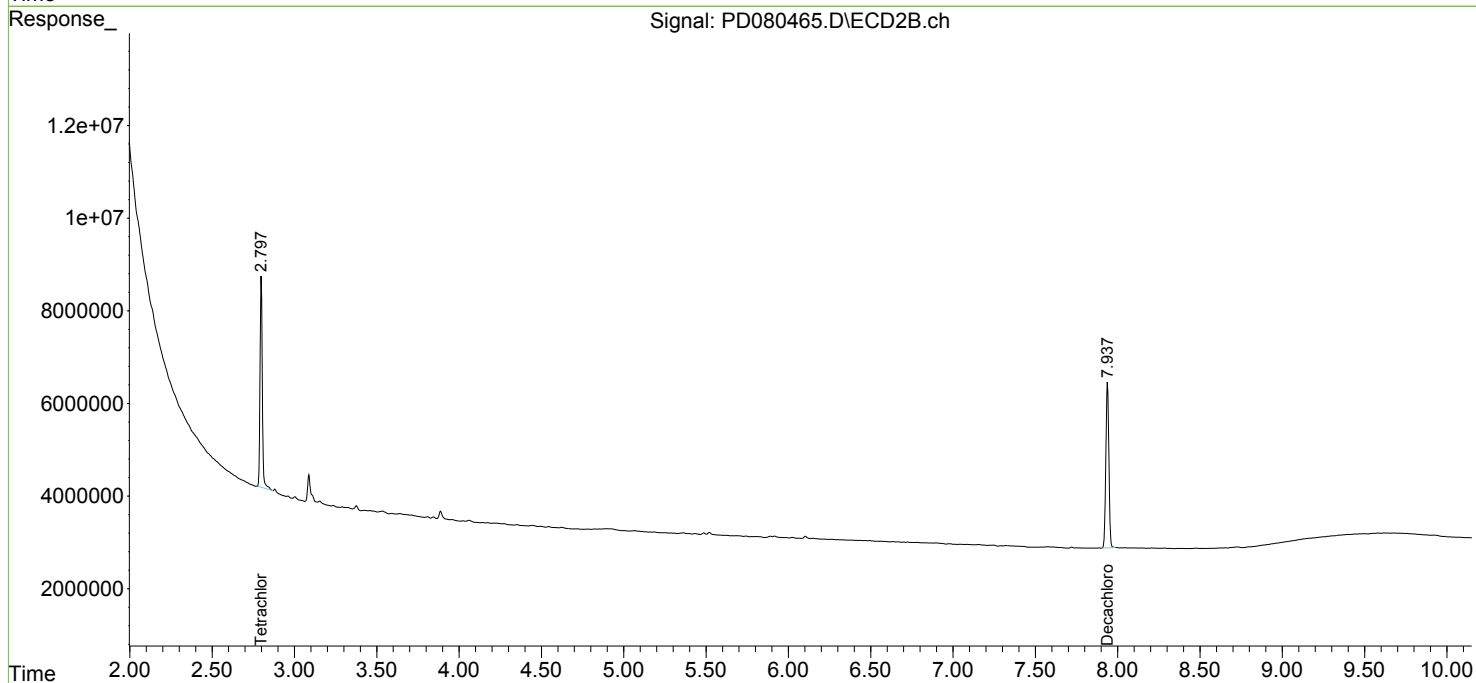
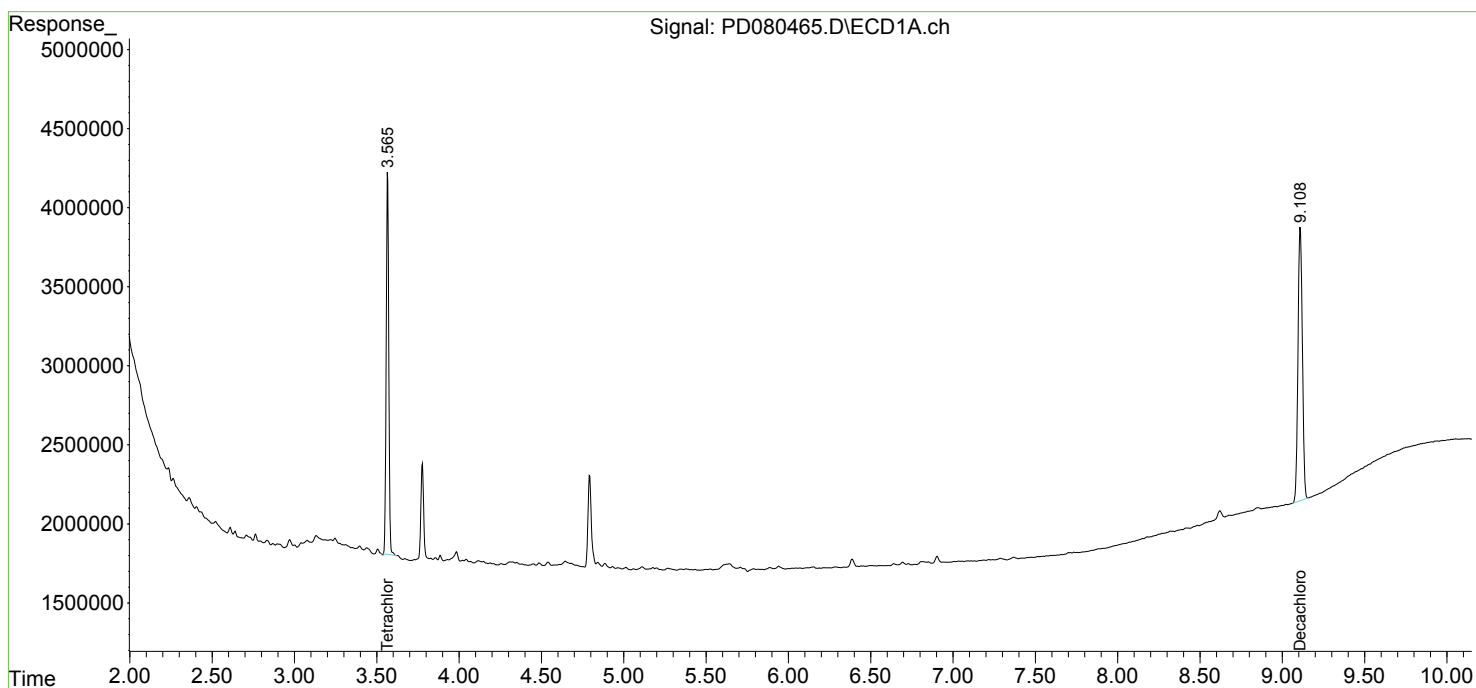
 (f)=RT Delta > 1/2 Window (#)=Amounts differ by > 25% (m)=manual int.

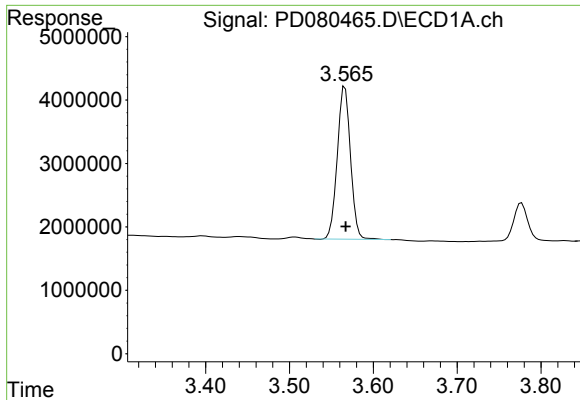
Data Path : Z:\pestpcbsrv\HPCHEM1\ECD_D\Data\PD122623\
 Data File : PD080465.D
 Signal(s) : Signal #1: ECD1A.ch Signal #2: ECD2B.ch
 Acq On : 25 Dec 2023 18:11
 Operator : AR\AJ
 Sample : 05926-04
 Misc :
 ALS Vial : 15 Sample Multiplier: 1

Instrument :
 ECD_D
 ClientSampleId :
 MR-320-0-2

Integration File signal 1: autoint1.e
 Integration File signal 2: autoint2.e
 Quant Time: Dec 25 23:23:29 2023
 Quant Method : Z:\pestpcbsrv\HPCHEM1\ECD_D\Method\PD120623.M
 Quant Title : GC Extractables
 QLast Update : Wed Dec 06 14:11:45 2023
 Response via : Initial Calibration
 Integrator: ChemStation

Volume Inj. : 1 µl
 Signal #1 Phase : ZB-MR1 Signal #2 Phase: ZB-MR2
 Signal #1 Info : 30M x 0.32mm x 0.5 Signal #2 Info : 30M x 0.32mm x 0.25µm

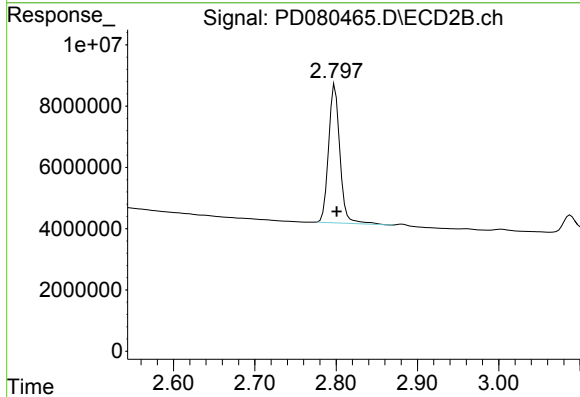




#1 Tetrachloro-m-xylene

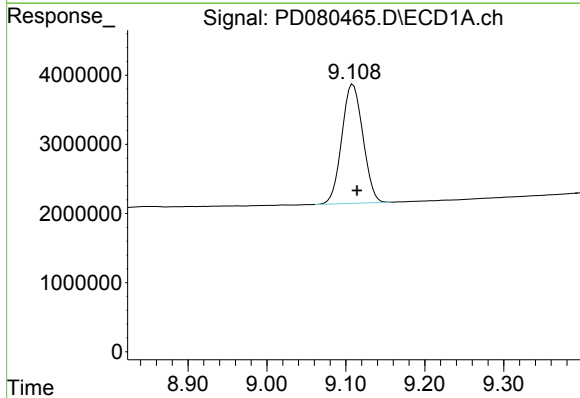
R.T.: 3.566 min
 Delta R.T.: 0.000 min
 Response: 26346585
 Conc: 17.48 ng/ml

Instrument :
 ECD_D
 ClientSampleId :
 MR-320-0-2



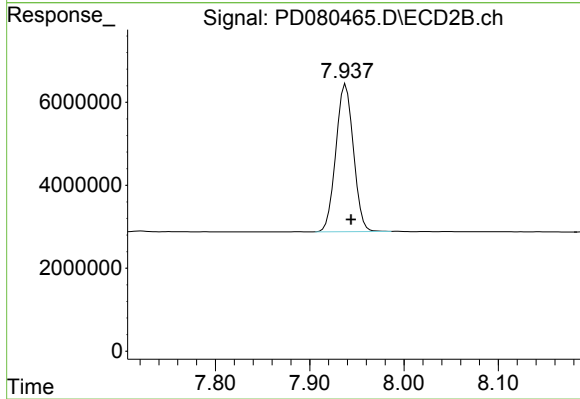
#1 Tetrachloro-m-xylene

R.T.: 2.799 min
 Delta R.T.: -0.002 min
 Response: 44184527
 Conc: 17.58 ng/ml



#28 Decachlorobiphenyl

R.T.: 9.109 min
 Delta R.T.: -0.005 min
 Response: 32023946
 Conc: 15.82 ng/ml



#28 Decachlorobiphenyl

R.T.: 7.938 min
 Delta R.T.: -0.005 min
 Response: 45956609
 Conc: 16.30 ng/ml