

Data Path : Z:\pestpcbsrv\HPCHEM1\ECD_D\Data\PD122623\
 Data File : PD080473.D
 Signal(s) : Signal #1: ECD1A.ch Signal #2: ECD2B.ch
 Acq On : 25 Dec 2023 20:24
 Operator : AR\AJ
 Sample : PB158051BL
 Misc :
 ALS Vial : 21 Sample Multiplier: 1

Instrument :
 ECD_D
 ClientSampleId :
 PB158051BL

Integration File signal 1: autoint1.e
 Integration File signal 2: autoint2.e
 Quant Time: Dec 25 23:26:18 2023
 Quant Method : Z:\pestpcbsrv\HPCHEM1\ECD_D\Method\PD120623.M
 Quant Title : GC Extractables
 QLast Update : Wed Dec 06 14:11:45 2023
 Response via : Initial Calibration
 Integrator: ChemStation

Volume Inj. : 1 µl
 Signal #1 Phase : ZB-MR1 Signal #2 Phase: ZB-MR2
 Signal #1 Info : 30M x 0.32mm x0.5 Signal #2 Info : 30M x 0.32mm x 0.25µm

Compound	RT#1	RT#2	Resp#1	Resp#2	ng/ml	ng/ml

System Monitoring Compounds						
1) SA Tetrachlo...	3.566	2.799	25840672	45877365	17.145	18.250
28) SA Decachlor...	9.109	7.937	33684996	48953013	16.641	17.366

Target Compounds

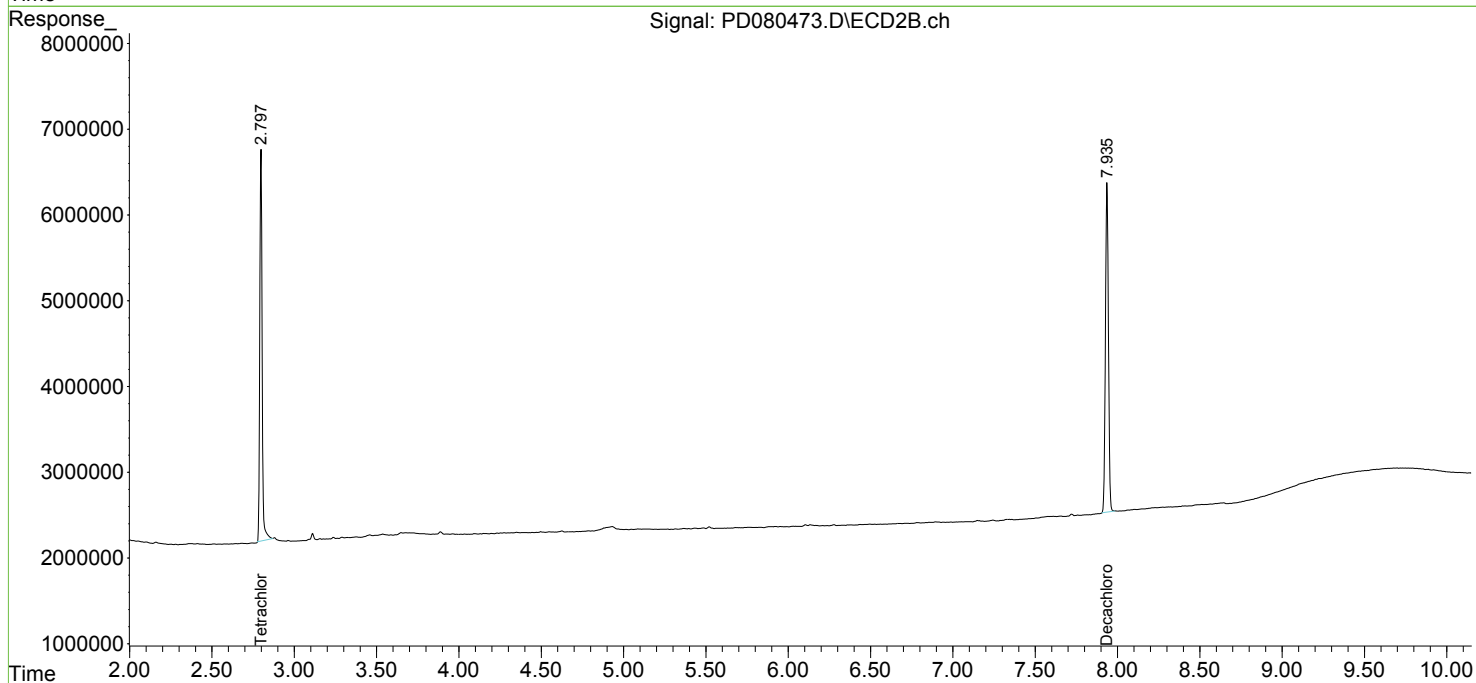
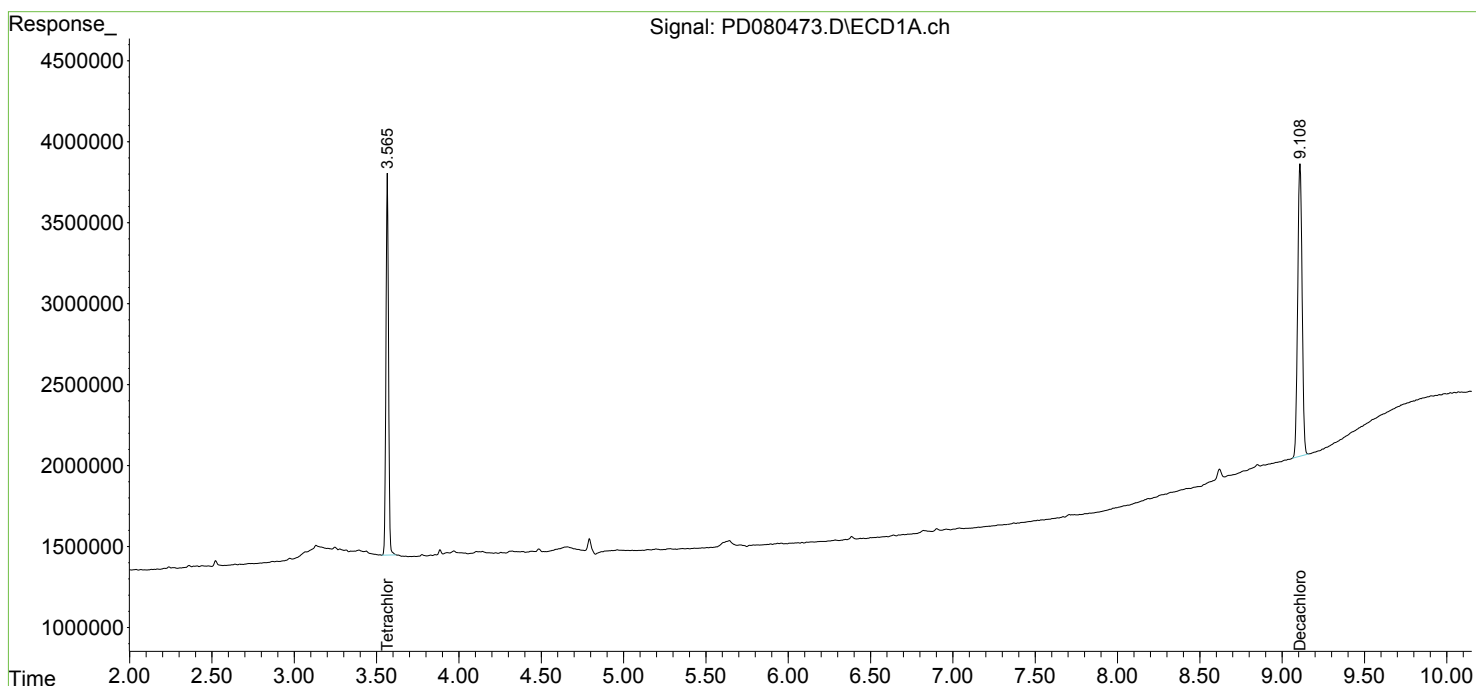
(f)=RT Delta > 1/2 Window (#)=Amounts differ by > 25% (m)=manual int.

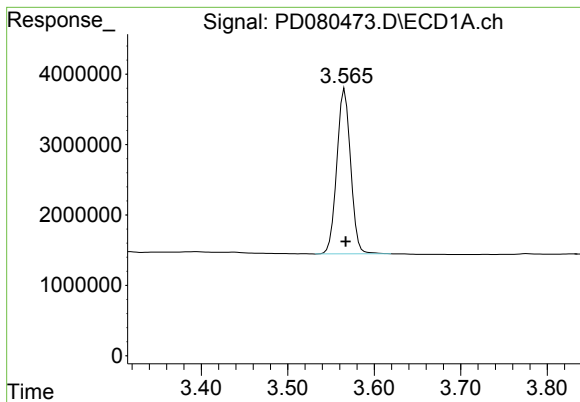
Data Path : Z:\pestpcbsrv\HPCHEM1\ECD_D\Data\PD122623\
 Data File : PD080473.D
 Signal(s) : Signal #1: ECD1A.ch Signal #2: ECD2B.ch
 Acq On : 25 Dec 2023 20:24
 Operator : AR\AJ
 Sample : PB158051BL
 Misc :
 ALS Vial : 21 Sample Multiplier: 1

Instrument :
 ECD_D
ClientSampleId :
 PB158051BL

Integration File signal 1: autoint1.e
 Integration File signal 2: autoint2.e
 Quant Time: Dec 25 23:26:18 2023
 Quant Method : Z:\pestpcbsrv\HPCHEM1\ECD_D\Method\PD120623.M
 Quant Title : GC Extractables
 QLast Update : Wed Dec 06 14:11:45 2023
 Response via : Initial Calibration
 Integrator: ChemStation

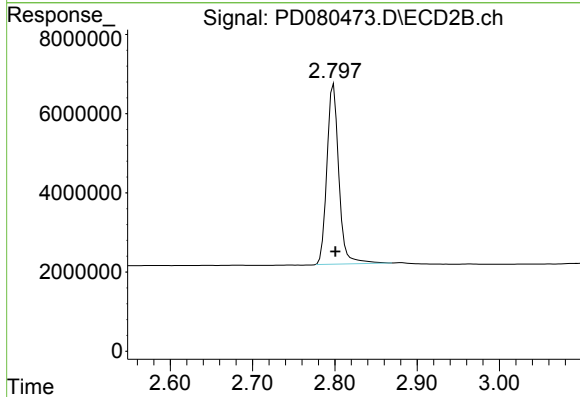
Volume Inj. : 1 µl
 Signal #1 Phase : ZB-MR1 Signal #2 Phase: ZB-MR2
 Signal #1 Info : 30M x 0.32mm x 0.5 Signal #2 Info : 30M x 0.32mm x 0.25µm



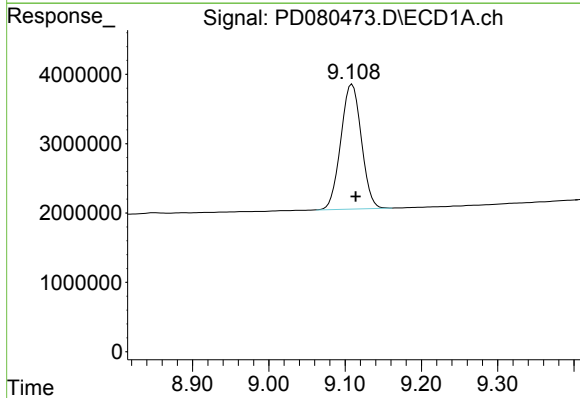


#1 Tetrachloro-m-xylene
 R.T.: 3.566 min
 Delta R.T.: -0.001 min
 Response: 25840672
 Conc: 17.14 ng/ml

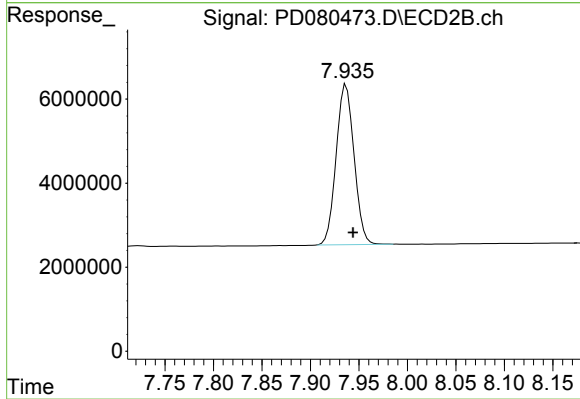
Instrument :
 ECD_D
 ClientSampleId :
 PB158051BL



#1 Tetrachloro-m-xylene
 R.T.: 2.799 min
 Delta R.T.: -0.002 min
 Response: 45877365
 Conc: 18.25 ng/ml



#28 Decachlorobiphenyl
 R.T.: 9.109 min
 Delta R.T.: -0.005 min
 Response: 33684996
 Conc: 16.64 ng/ml



#28 Decachlorobiphenyl
 R.T.: 7.937 min
 Delta R.T.: -0.007 min
 Response: 48953013
 Conc: 17.37 ng/ml