

Data Path : Z:\pestpcbsrv\HPCHEM1\ECD_D\Data\PD122623\
 Data File : PD080475.D
 Signal(s) : Signal #1: ECD1A.ch Signal #2: ECD2B.ch
 Acq On : 25 Dec 2023 20:51
 Operator : AR\AJ
 Sample : 05899-14
 Misc :
 ALS Vial : 23 Sample Multiplier: 1

Instrument :
 ECD_D
ClientSampleId :
 GH-SS-03

Manual Integrations
APPROVED
 Reviewed By :Abdul Mirza 12/26/2023
 Supervised By :Ankita Jodhani 12/28/2023

Integration File signal 1: autoint1.e
 Integration File signal 2: autoint2.e
 Quant Time: Dec 25 23:27:03 2023
 Quant Method : Z:\pestpcbsrv\HPCHEM1\ECD_D\Method\PD120623.M
 Quant Title : GC Extractables
 QLast Update : Wed Dec 06 14:11:45 2023
 Response via : Initial Calibration
 Integrator: ChemStation

Volume Inj. : 1 µl
 Signal #1 Phase : ZB-MR1 Signal #2 Phase: ZB-MR2
 Signal #1 Info : 30M x 0.32mm x0.5 Signal #2 Info : 30M x 0.32mm x 0.25µm

Compound	RT#1	RT#2	Resp#1	Resp#2	ng/ml	ng/ml

System Monitoring Compounds						
1) SA Tetrachlo...	3.564	2.798	10958389	24274504	7.271m	9.656 #
2) SA Decachlor...	9.109	7.937	16534714	24569477	8.169	8.716
Target Compounds						
8) B Heptachlo...	5.720	4.748	1467763	2394506	0.666m	0.730

(f)=RT Delta > 1/2 Window (#)=Amounts differ by > 25% (m)=manual int.

Data Path : Z:\pestpcbsrv\HPCHEM1\ECD_D\Data\PD122623\
 Data File : PD080475.D
 Signal(s) : Signal #1: ECD1A.ch Signal #2: ECD2B.ch
 Acq On : 25 Dec 2023 20:51
 Operator : AR\AJ
 Sample : 05899-14
 Misc :
 ALS Vial : 23 Sample Multiplier: 1

Instrument :

ECD_D

ClientSampleId :

GHL-SS-03

Manual Integrations

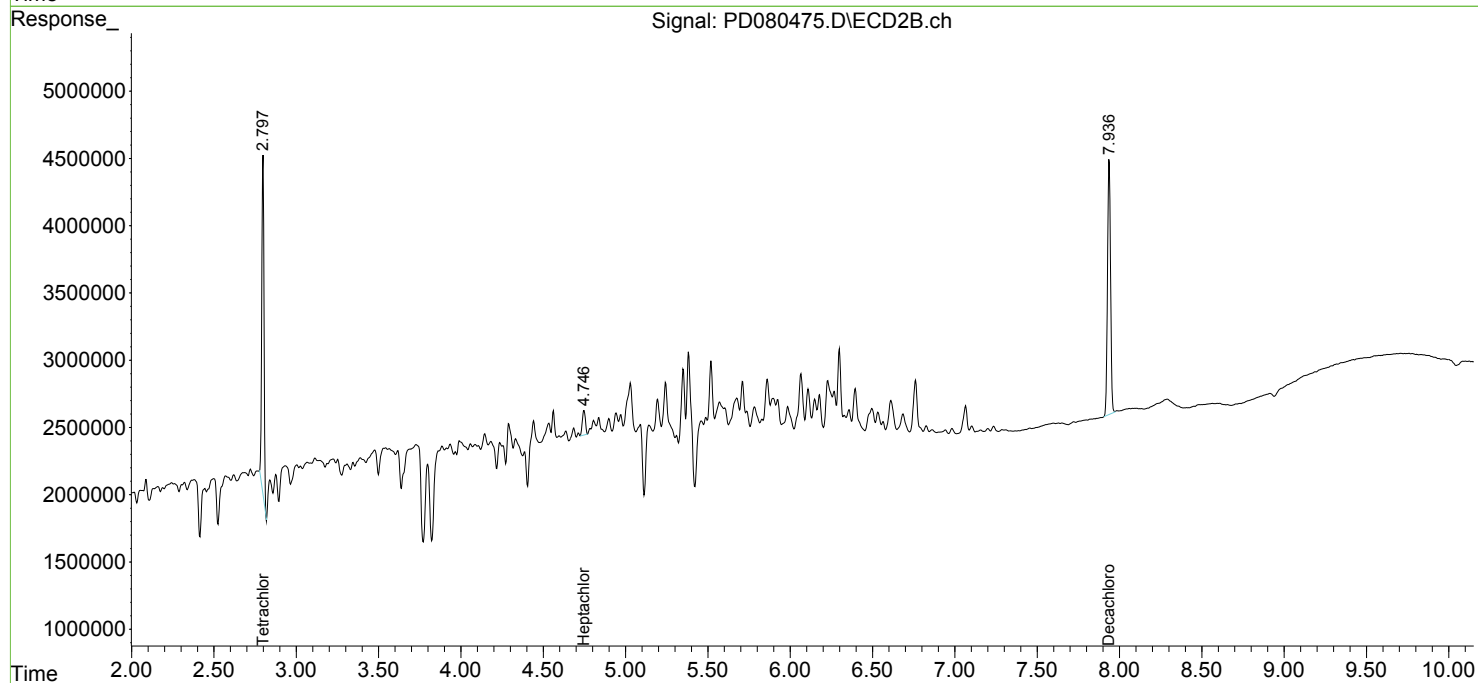
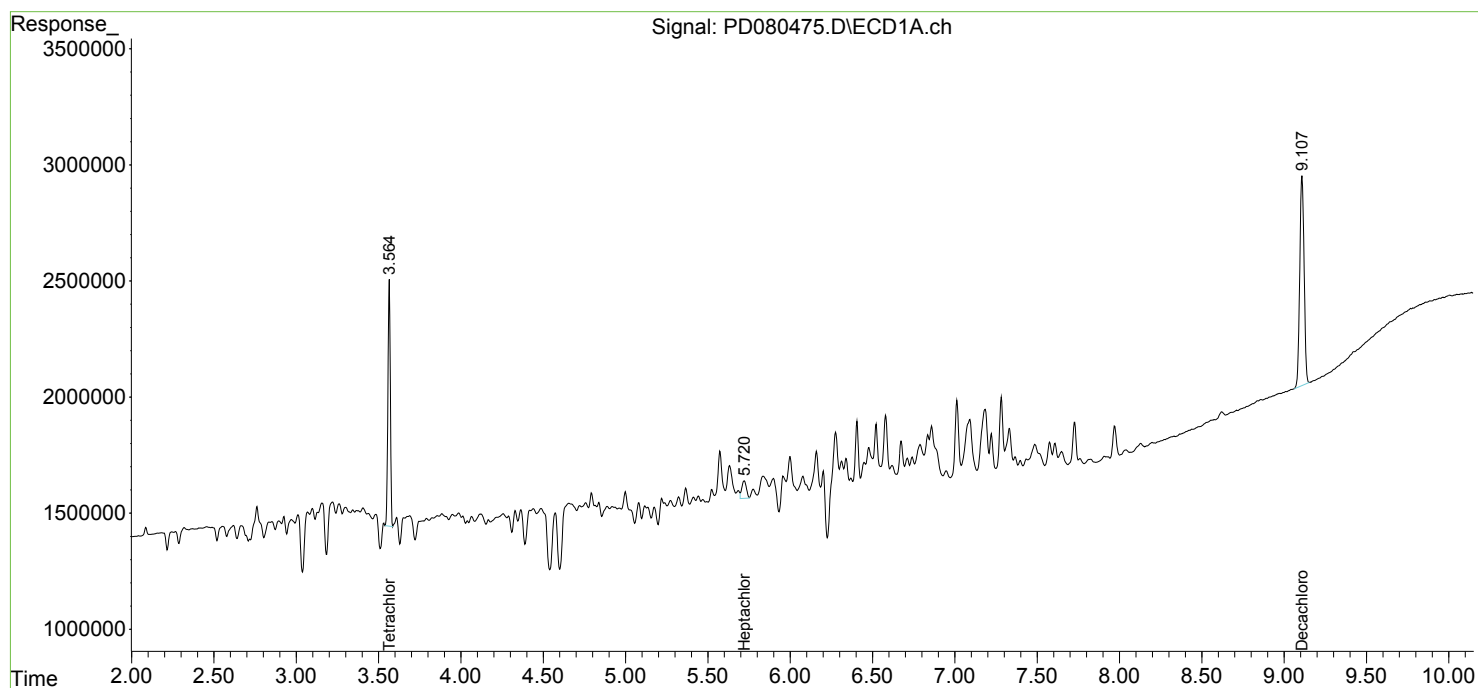
APPROVED

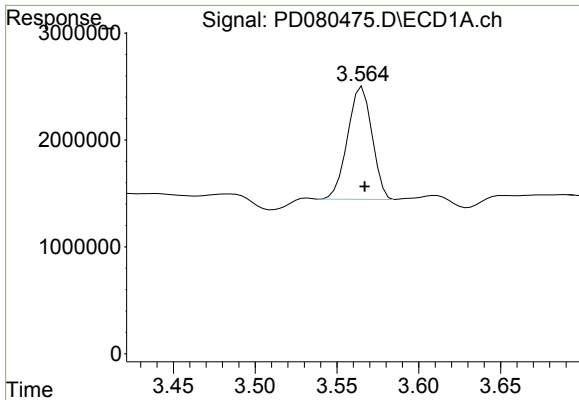
Reviewed By :Abdul Mirza 12/26/2023

Supervised By :Ankita Jodhani 12/28/2023

Integration File signal 1: autoint1.e
 Integration File signal 2: autoint2.e
 Quant Time: Dec 25 23:27:03 2023
 Quant Method : Z:\pestpcbsrv\HPCHEM1\ECD_D\Method\PD120623.M
 Quant Title : GC Extractables
 QLast Update : Wed Dec 06 14:11:45 2023
 Response via : Initial Calibration
 Integrator: ChemStation

Volume Inj. : 1 µl
 Signal #1 Phase : ZB-MR1 Signal #2 Phase: ZB-MR2
 Signal #1 Info : 30M x 0.32mm x0.5 Signal #2 Info : 30M x 0.32mm x 0.25µm





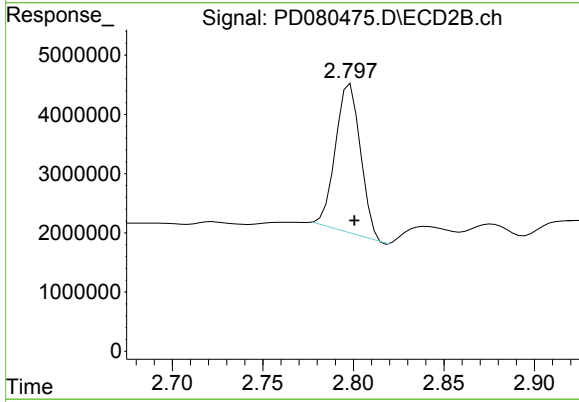
#1 Tetrachloro-m-xylene

R.T.: 3.564 min
 Delta R.T.: -0.003 min
 Response: 10958389
 Conc: 7.27 ng/ml

Instrument :
 ECD_D
 ClientSampleId :
 GHL-SS-03

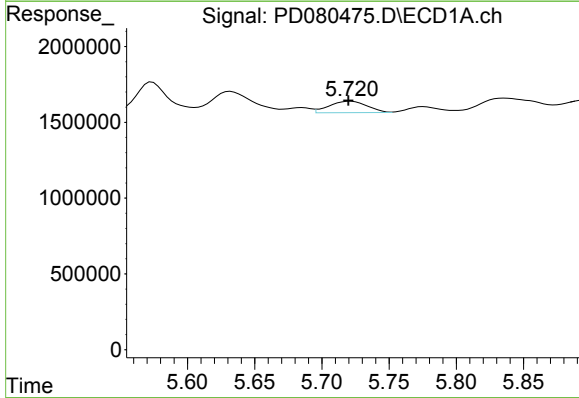
Manual Integrations
 APPROVED

Reviewed By :Abdul Mirza 12/26/2023
 Supervised By :Ankita Jodhani 12/28/2023



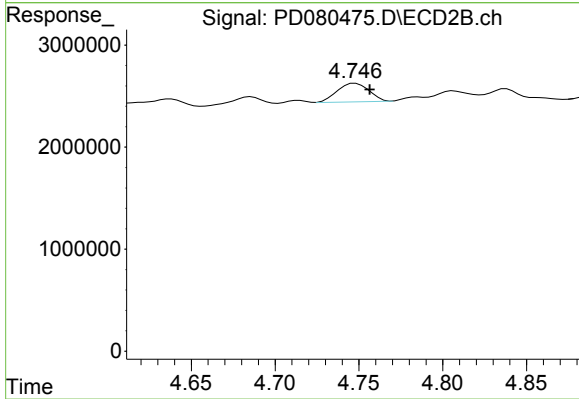
#1 Tetrachloro-m-xylene

R.T.: 2.798 min
 Delta R.T.: -0.002 min
 Response: 24274504
 Conc: 9.66 ng/ml



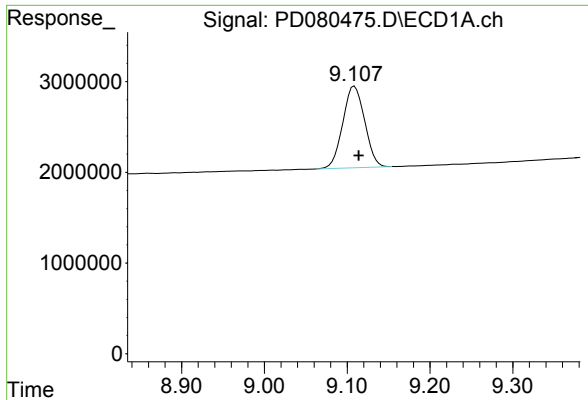
#8 Heptachlor epoxide

R.T.: 5.720 min
 Delta R.T.: 0.000 min
 Response: 1467763
 Conc: 0.67 ng/ml m



#8 Heptachlor epoxide

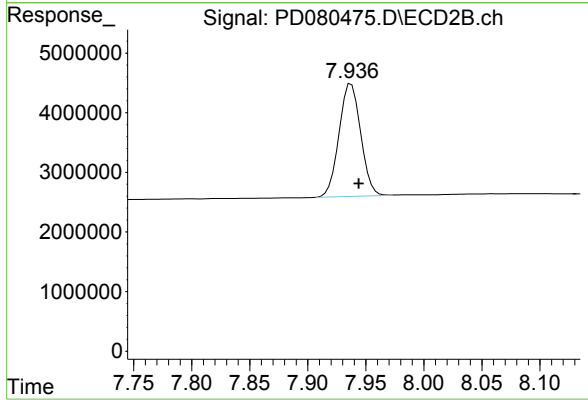
R.T.: 4.748 min
 Delta R.T.: -0.009 min
 Response: 2394506
 Conc: 0.73 ng/ml



#28 Decachlorobiphenyl
 R.T.: 9.109 min
 Delta R.T.: -0.005 min
 Response: 16534714
 Conc: 8.17 ng/ml

Instrument : ECD_D
 ClientSampleId : GH-SS-03

Manual Integrations
APPROVED
 Reviewed By :Abdul Mirza 12/26/2023
 Supervised By :Ankita Jodhani 12/28/2023



#28 Decachlorobiphenyl
 R.T.: 7.937 min
 Delta R.T.: -0.006 min
 Response: 24569477
 Conc: 8.72 ng/ml