

Data Path : Z:\pestpcbsrv\HPCHEM1\ECD\_D\Data\PD122623\  
 Data File : PD080485.D  
 Signal(s) : Signal #1: ECD1A.ch Signal #2: ECD2B.ch  
 Acq On : 25 Dec 2023 23:03  
 Operator : AR\AJ  
 Sample : 05899-23MSD  
 Misc :  
 ALS Vial : 33 Sample Multiplier: 1

**Instrument :**  
 ECD\_D  
**ClientSampleId :**  
 GHL-SS-19-0-2MSD

**Manual Integrations**  
**APPROVED**

Reviewed By :Abdul Mirza 12/26/2023  
 Supervised By :Ankita Jodhani 12/28/2023

Integration File signal 1: autoint1.e  
 Integration File signal 2: autoint2.e  
 Quant Time: Dec 25 23:31:22 2023  
 Quant Method : Z:\pestpcbsrv\HPCHEM1\ECD\_D\Method\PD120623.M  
 Quant Title : GC Extractables  
 QLast Update : Wed Dec 06 14:11:45 2023  
 Response via : Initial Calibration  
 Integrator: ChemStation

Volume Inj. : 1 µl  
 Signal #1 Phase : ZB-MR1 Signal #2 Phase: ZB-MR2  
 Signal #1 Info : 30M x 0.32mm x0.5 Signal #2 Info : 30M x 0.32mm x 0.25µm

Compound	RT#1	RT#2	Resp#1	Resp#2	ng/ml	ng/ml
-----						
System Monitoring Compounds						
1) SA Tetrachlo...	3.566	2.799	24936572	68433758	16.545	27.223 #
28) SA Decachlor...	9.109	7.938	25018699	42338109	12.360	15.019
Target Compounds						
2) A alpha-BHC	4.023	3.301	109.1E6	187.3E6	43.432	48.982
3) MA gamma-BHC...	4.355	3.631	108.3E6	184.7E6	45.708m	50.813
4) MA Heptachlor	4.949	3.972	108.5E6	172.8E6	44.126	49.286
5) MB Aldrin	5.292	4.251	103.6E6	161.9E6	43.612	45.465m
6) B beta-BHC	4.551	3.926	37604871	75116704	37.576	48.658 #
7) B delta-BHC	4.799	4.156	107.3E6	186.1E6	43.806	49.420
8) B Heptachlo...	5.718	4.754	93932529	157.8E6	42.642	48.133
9) A Endosulfan I	6.105	5.126	96329794	101.8E6	46.847	33.705 #
10) B gamma-Chl...	5.974	5.004	100.0E6	163.6E6	45.943	50.759
11) B alpha-Chl...	6.054	5.068	97133030	158.2E6	45.028	49.232
12) B 4,4'-DDE	6.224	5.257	64507471	149.6E6	32.172	49.647 #
13) MA Dieldrin	6.381	5.387	90130653	162.8E6	41.309	49.730m
14) MA Endrin	6.610	5.663	75579605	141.0E6	41.677	50.186
15) B Endosulfa...	6.828	5.956	78155853	131.6E6	41.026	48.215
16) A 4,4'-DDD	6.741	5.810	74328355	116.6E6	44.368	45.273
17) MA 4,4'-DDT	7.056	6.061	72410984	117.5E6	40.700	46.237
18) B Endrin al...	6.958	6.135	60898257	98284159	42.509	47.876
19) B Endosulfa...	7.193	6.357	79699012	129.0E6	42.033	48.131
20) A Methoxychlor	7.531	6.636	39826594	61519744	40.294	42.070
21) B Endrin ke...	7.679	6.863	91079677	131.4E6	43.989	42.057
22) Mirex	8.155	7.048	63549828	97947908	38.848	40.471

(f)=RT Delta > 1/2 Window (#)=Amounts differ by > 25% (m)=manual int.

Data Path : Z:\pestpcbsrv\HPCHEM1\ECD\_D\Data\PD122623\  
 Data File : PD080485.D  
 Signal(s) : Signal #1: ECD1A.ch Signal #2: ECD2B.ch  
 Acq On : 25 Dec 2023 23:03  
 Operator : AR\AJ  
 Sample : 05899-23MSD  
 Misc :  
 ALS Vial : 33 Sample Multiplier: 1

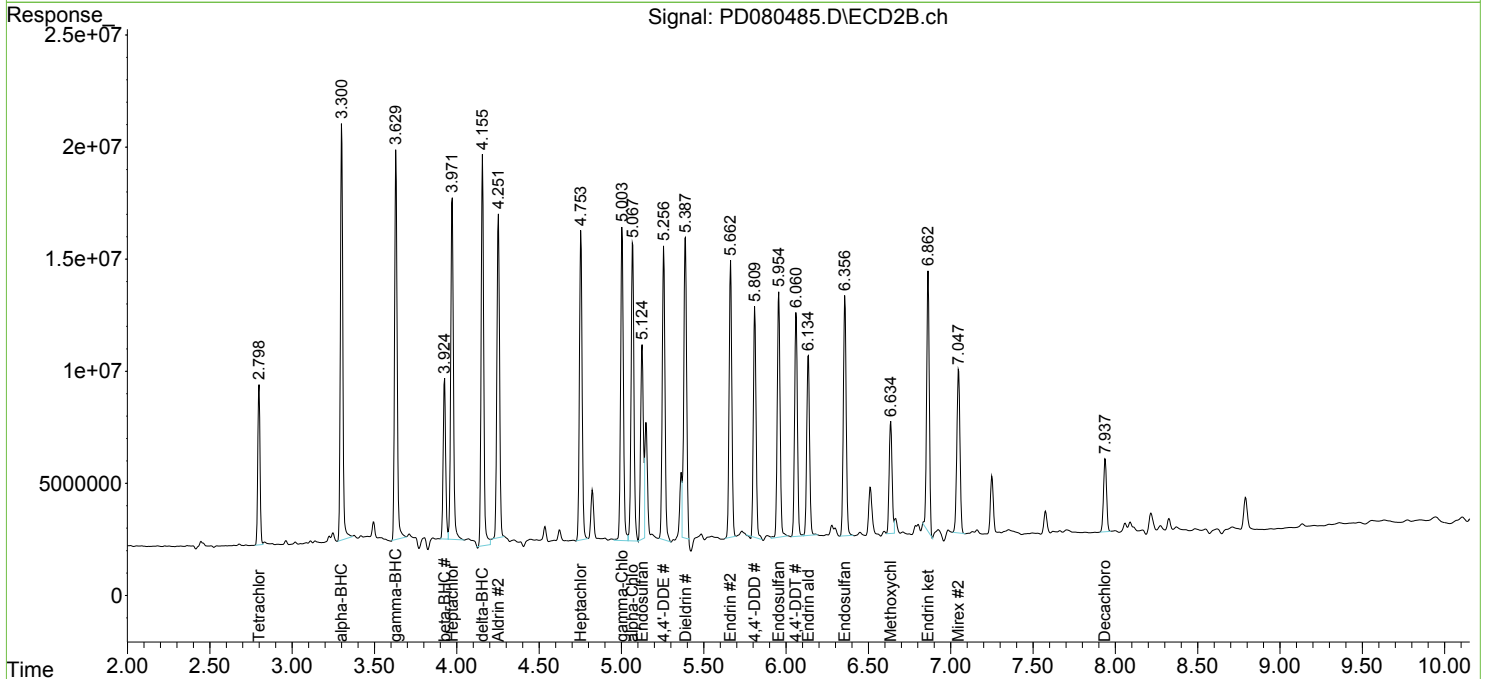
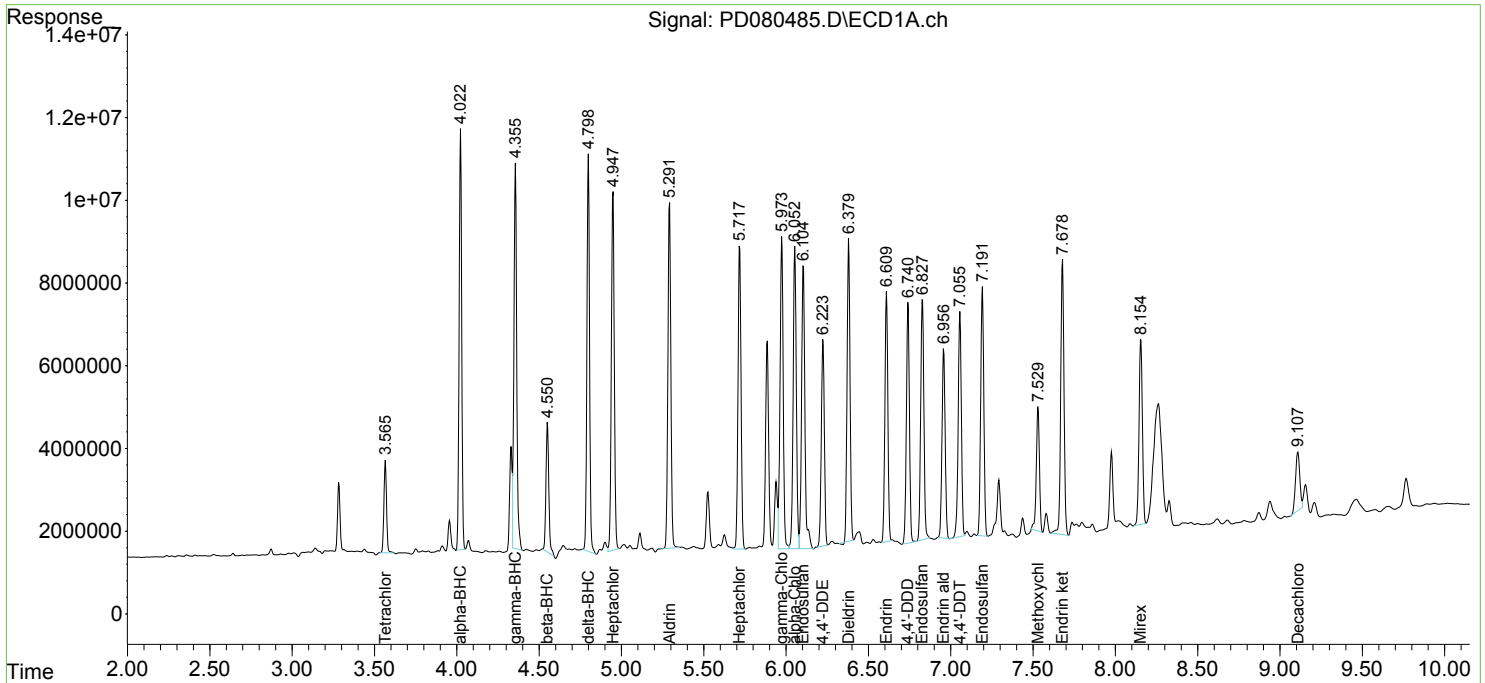
Instrument :  
 ECD\_D  
 ClientSampleId :  
 GHL-SS-19-0-2MSD

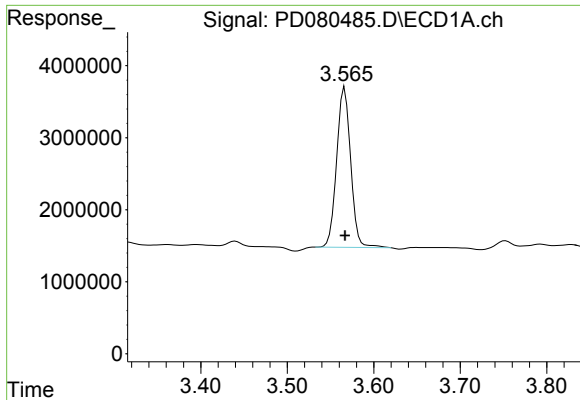
Manual Integrations  
 APPROVED

Reviewed By :Abdul Mirza 12/26/2023  
 Supervised By :Ankita Jodhani 12/28/2023

Integration File signal 1: autoint1.e  
 Integration File signal 2: autoint2.e  
 Quant Time: Dec 25 23:31:22 2023  
 Quant Method : Z:\pestpcbsrv\HPCHEM1\ECD\_D\Method\PD120623.M  
 Quant Title : GC Extractables  
 QLast Update : Wed Dec 06 14:11:45 2023  
 Response via : Initial Calibration  
 Integrator: ChemStation

Volume Inj. : 1 µl  
 Signal #1 Phase : ZB-MR1 Signal #2 Phase: ZB-MR2  
 Signal #1 Info : 30M x 0.32mm x0.5 Signal #2 Info : 30M x 0.32mm x 0.25µm



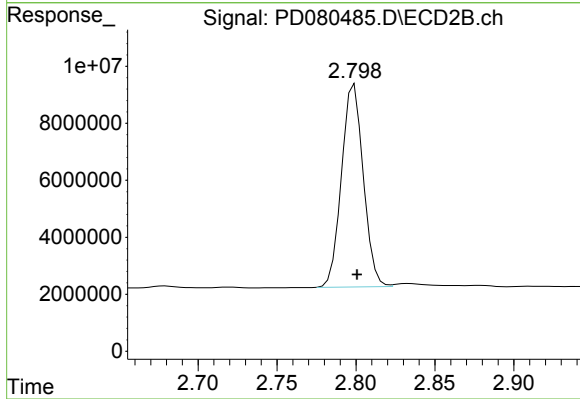


#1 Tetrachloro-m-xylene  
 R.T.: 3.566 min  
 Delta R.T.: 0.000 min  
 Response: 24936572  
 Conc: 16.54 ng/ml

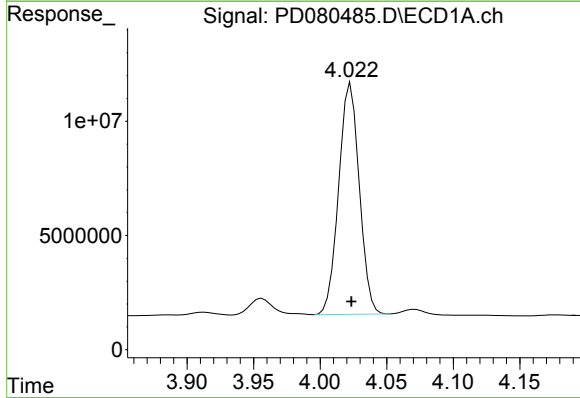
Instrument :  
 ECD\_D  
 ClientSampleId :  
 GHJ-SS-19-0-2MSD

Manual Integrations  
 APPROVED

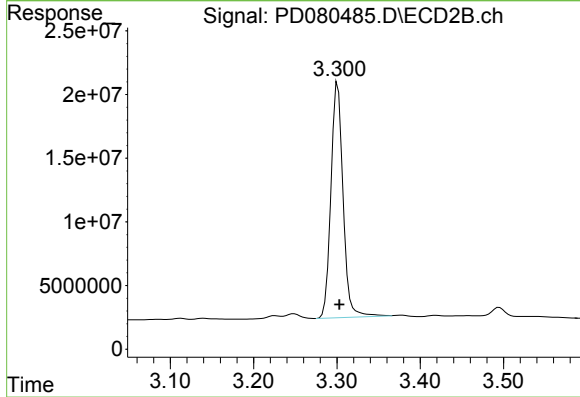
Reviewed By :Abdul Mirza 12/26/2023  
 Supervised By :Ankita Jodhani 12/28/2023



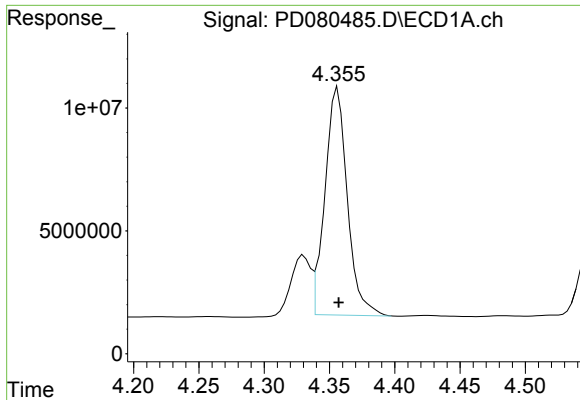
#1 Tetrachloro-m-xylene  
 R.T.: 2.799 min  
 Delta R.T.: -0.002 min  
 Response: 68433758  
 Conc: 27.22 ng/ml



#2 alpha-BHC  
 R.T.: 4.023 min  
 Delta R.T.: 0.000 min  
 Response: 109095303  
 Conc: 43.43 ng/ml



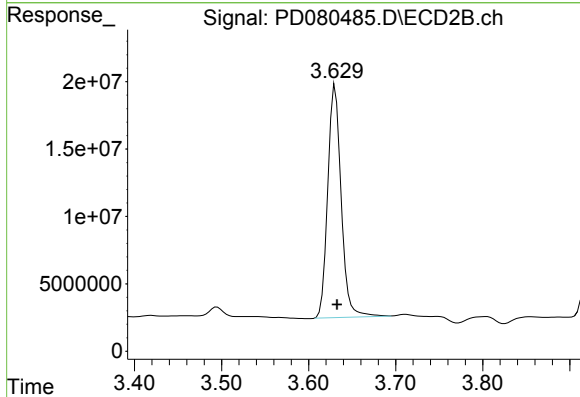
#2 alpha-BHC  
 R.T.: 3.301 min  
 Delta R.T.: -0.002 min  
 Response: 187292396  
 Conc: 48.98 ng/ml



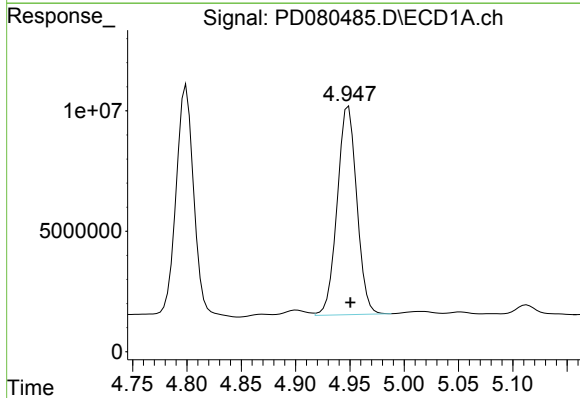
#3 gamma-BHC (Lindane)  
 R.T.: 4.355 min  
 Delta R.T.: -0.002 min  
 Response: 108291356  
 Conc: 45.71 ng/ml

Instrument : ECD\_D  
 ClientSampleId : GH-SS-19-0-2MSD

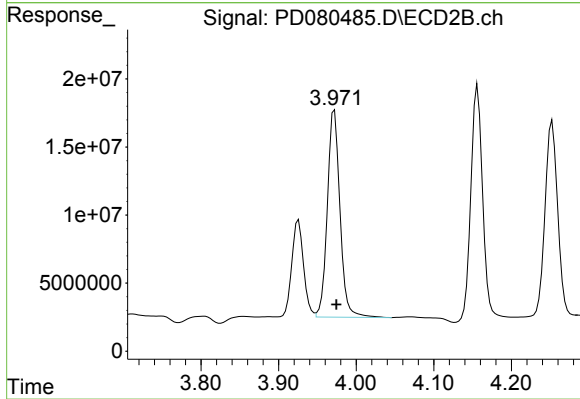
Manual Integrations  
**APPROVED**  
 Reviewed By :Abdul Mirza 12/26/2023  
 Supervised By :Ankita Jodhani 12/28/2023



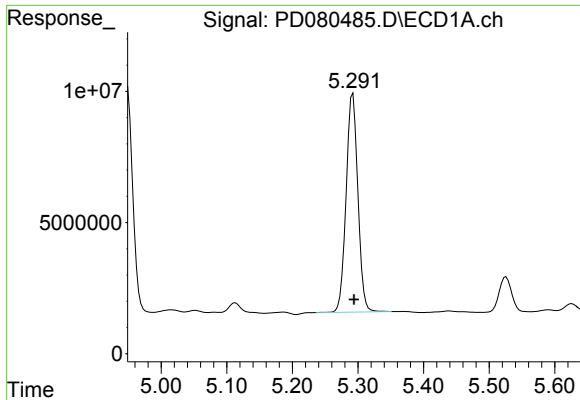
#3 gamma-BHC (Lindane)  
 R.T.: 3.631 min  
 Delta R.T.: -0.002 min  
 Response: 184655063  
 Conc: 50.81 ng/ml



#4 Heptachlor  
 R.T.: 4.949 min  
 Delta R.T.: -0.002 min  
 Response: 108519362  
 Conc: 44.13 ng/ml



#4 Heptachlor  
 R.T.: 3.972 min  
 Delta R.T.: -0.003 min  
 Response: 172817365  
 Conc: 49.29 ng/ml

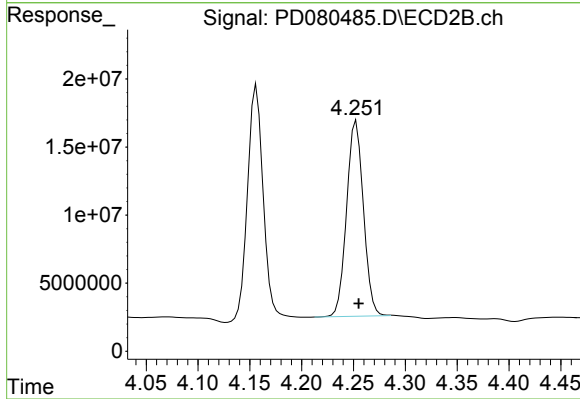


#5 Aldrin  
 R.T.: 5.292 min  
 Delta R.T.: -0.002 min  
 Response: 103564628  
 Conc: 43.61 ng/ml

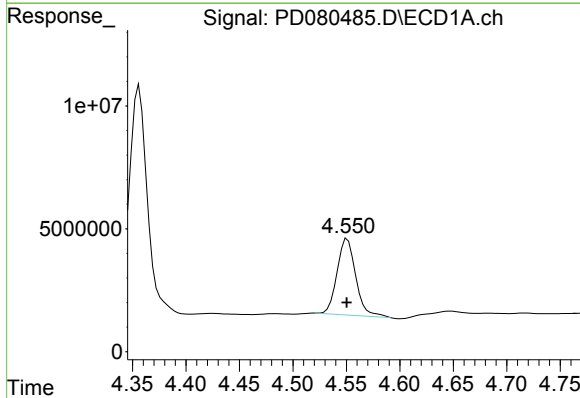
Instrument :  
 ECD\_D  
 ClientSampleId :  
 GHL-SS-19-0-2MSD

Manual Integrations  
 APPROVED

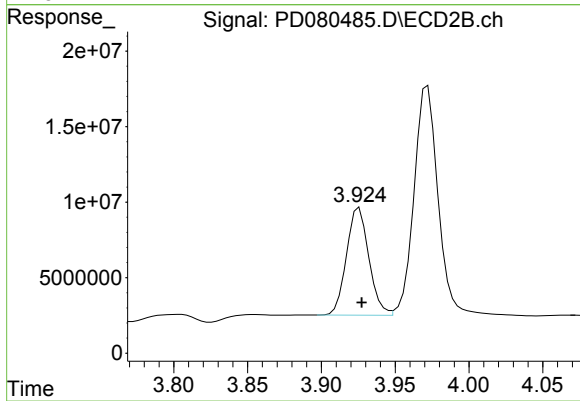
Reviewed By :Abdul Mirza 12/26/2023  
 Supervised By :Ankita Jodhani 12/28/2023



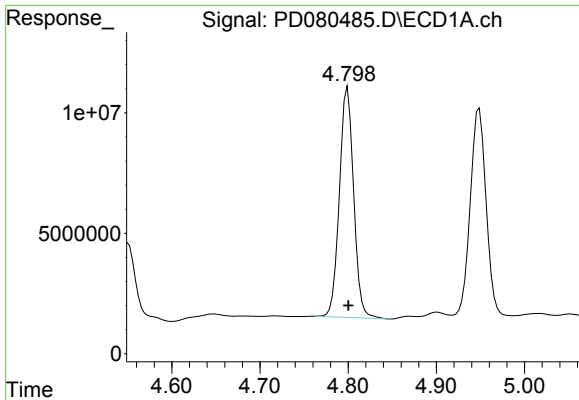
#5 Aldrin  
 R.T.: 4.251 min  
 Delta R.T.: -0.004 min  
 Response: 161861494  
 Conc: 45.47 ng/ml m



#6 beta-BHC  
 R.T.: 4.551 min  
 Delta R.T.: 0.000 min  
 Response: 37604871  
 Conc: 37.58 ng/ml



#6 beta-BHC  
 R.T.: 3.926 min  
 Delta R.T.: -0.002 min  
 Response: 75116704  
 Conc: 48.66 ng/ml



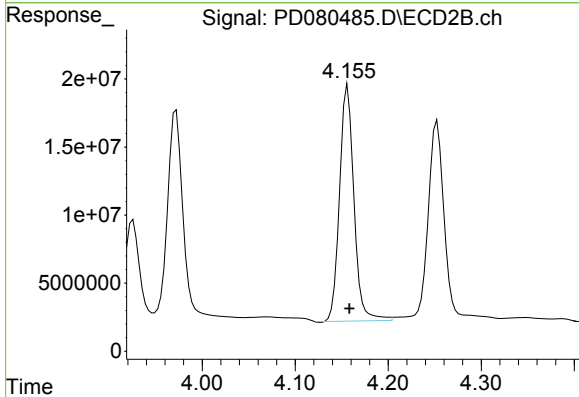
#7 delta-BHC

R.T.: 4.799 min  
 Delta R.T.: 0.000 min  
 Response: 107278695  
 Conc: 43.81 ng/ml

Instrument :  
 ECD\_D  
 ClientSampleId :  
 GHL-SS-19-0-2MSD

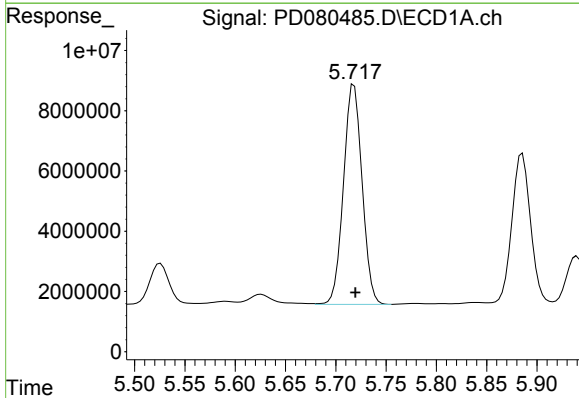
Manual Integrations  
 APPROVED

Reviewed By :Abdul Mirza 12/26/2023  
 Supervised By :Ankita Jodhani 12/28/2023



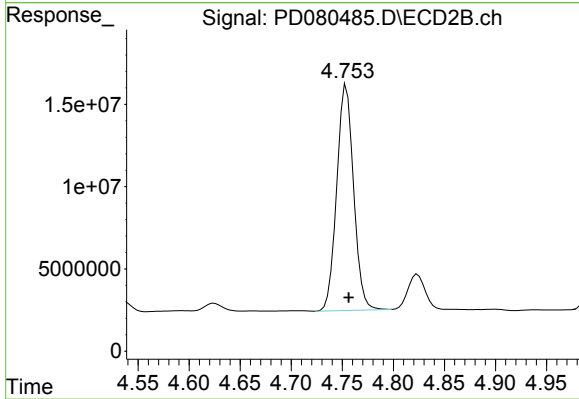
#7 delta-BHC

R.T.: 4.156 min  
 Delta R.T.: -0.002 min  
 Response: 186097029  
 Conc: 49.42 ng/ml



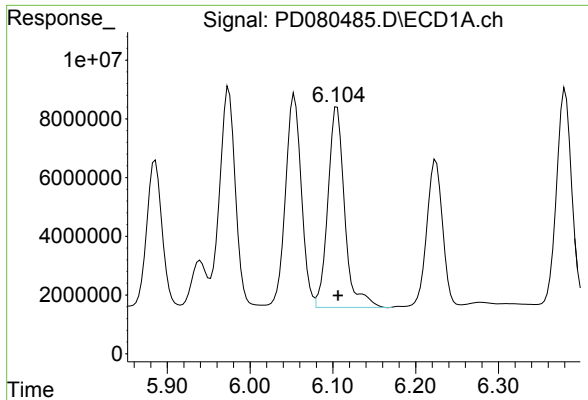
#8 Heptachlor epoxide

R.T.: 5.718 min  
 Delta R.T.: -0.001 min  
 Response: 93932529  
 Conc: 42.64 ng/ml



#8 Heptachlor epoxide

R.T.: 4.754 min  
 Delta R.T.: -0.002 min  
 Response: 157845173  
 Conc: 48.13 ng/ml



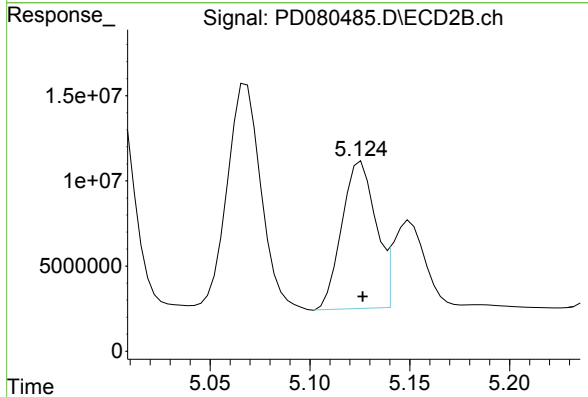
#9 Endosulfan I

R.T.: 6.105 min  
 Delta R.T.: -0.001 min  
 Response: 96329794  
 Conc: 46.85 ng/ml

Instrument :  
 ECD\_D  
 ClientSampleId :  
 GH-SS-19-0-2MSD

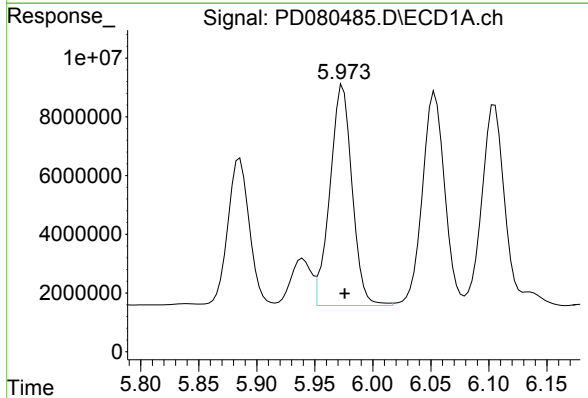
Manual Integrations  
 APPROVED

Reviewed By :Abdul Mirza 12/26/2023  
 Supervised By :Ankita Jodhani 12/28/2023



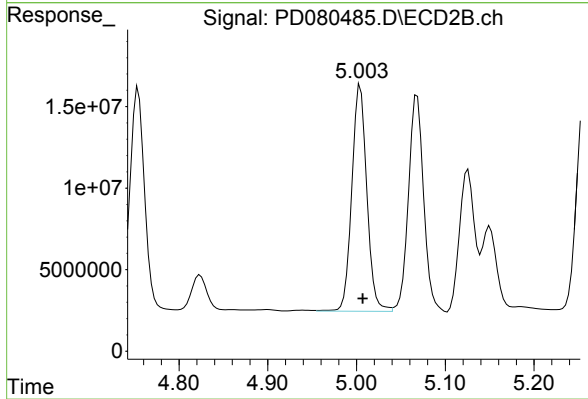
#9 Endosulfan I

R.T.: 5.126 min  
 Delta R.T.: 0.000 min  
 Response: 101764411  
 Conc: 33.71 ng/ml



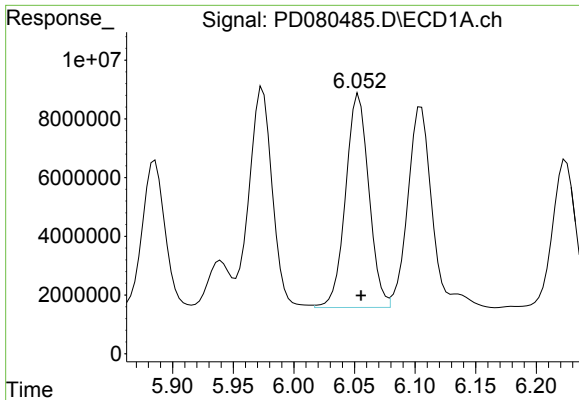
#10 gamma-Chlordane

R.T.: 5.974 min  
 Delta R.T.: -0.002 min  
 Response: 100015995  
 Conc: 45.94 ng/ml



#10 gamma-Chlordane

R.T.: 5.004 min  
 Delta R.T.: -0.003 min  
 Response: 163627140  
 Conc: 50.76 ng/ml



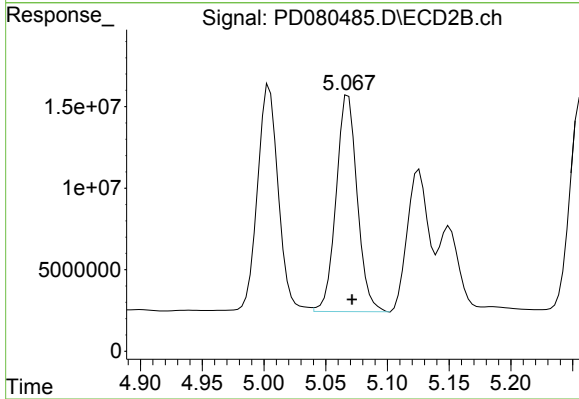
#11 alpha-Chlordane

R.T.: 6.054 min  
 Delta R.T.: -0.002 min  
 Response: 97133030  
 Conc: 45.03 ng/ml

Instrument :  
 ECD\_D  
 ClientSampleId :  
 GHL-SS-19-0-2MSD

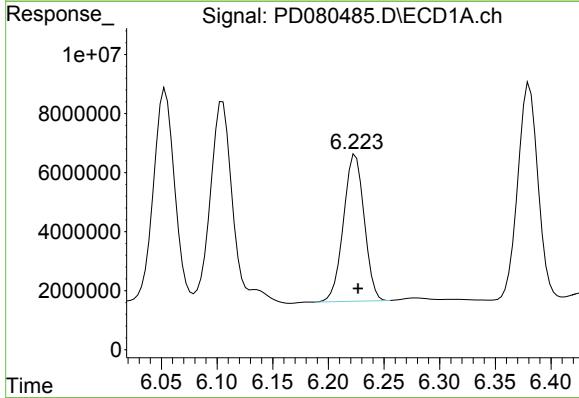
Manual Integrations  
 APPROVED

Reviewed By :Abdul Mirza 12/26/2023  
 Supervised By :Ankita Jodhani 12/28/2023



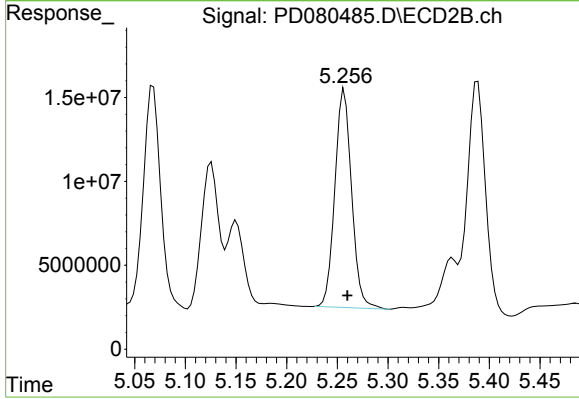
#11 alpha-Chlordane

R.T.: 5.068 min  
 Delta R.T.: -0.003 min  
 Response: 158225011  
 Conc: 49.23 ng/ml



#12 4,4'-DDE

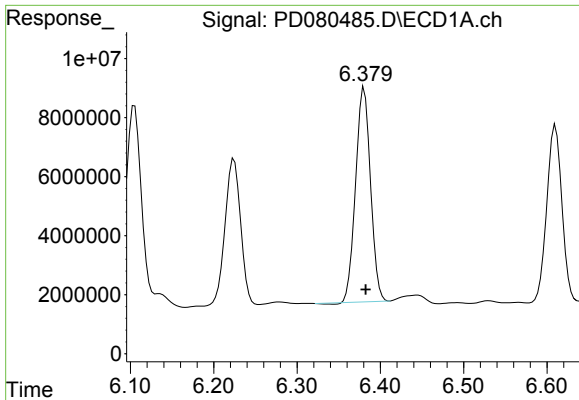
R.T.: 6.224 min  
 Delta R.T.: -0.002 min  
 Response: 64507471  
 Conc: 32.17 ng/ml



#12 4,4'-DDE

R.T.: 5.257 min  
 Delta R.T.: -0.003 min  
 Response: 149648372  
 Conc: 49.65 ng/ml





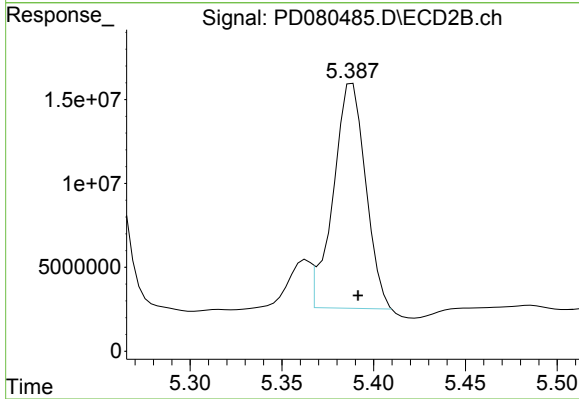
#13 Dieldrin

R.T.: 6.381 min  
 Delta R.T.: -0.002 min  
 Response: 90130653  
 Conc: 41.31 ng/ml

Instrument :  
 ECD\_D  
 ClientSampleId :  
 GHL-SS-19-0-2MSD

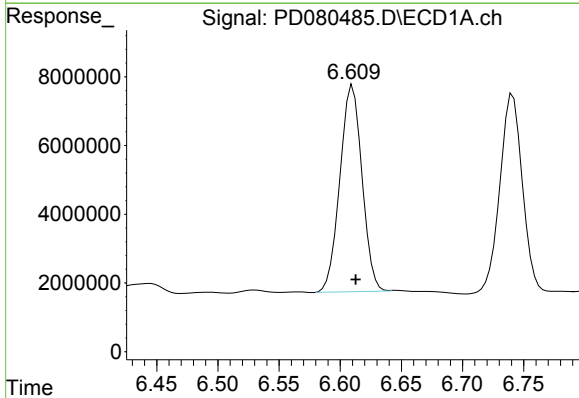
Manual Integrations  
 APPROVED

Reviewed By :Abdul Mirza 12/26/2023  
 Supervised By :Ankita Jodhani 12/28/2023



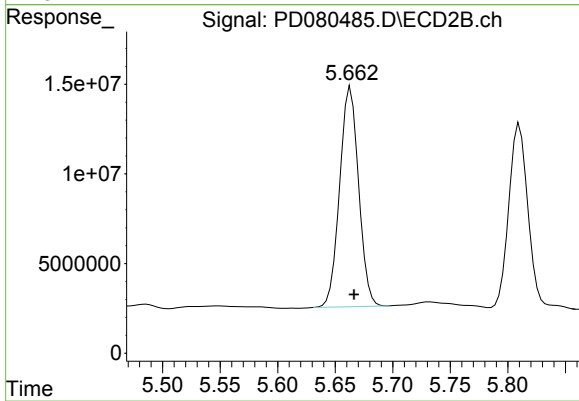
#13 Dieldrin

R.T.: 5.387 min  
 Delta R.T.: -0.005 min  
 Response: 162837750  
 Conc: 49.73 ng/ml m



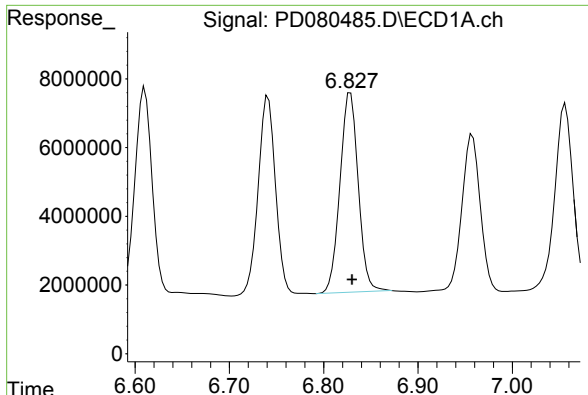
#14 Endrin

R.T.: 6.610 min  
 Delta R.T.: -0.002 min  
 Response: 75579605  
 Conc: 41.68 ng/ml



#14 Endrin

R.T.: 5.663 min  
 Delta R.T.: -0.003 min  
 Response: 141024936  
 Conc: 50.19 ng/ml

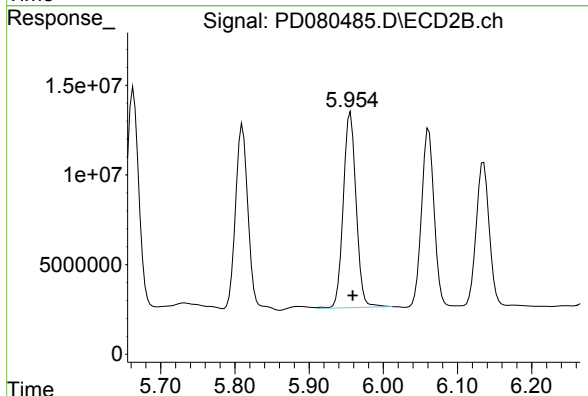


#15 Endosulfan II  
 R.T.: 6.828 min  
 Delta R.T.: -0.002 min  
 Response: 78155853  
 Conc: 41.03 ng/ml

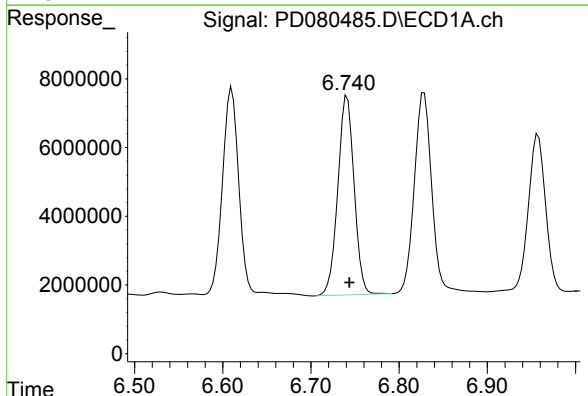
Instrument : ECD\_D  
 Client Sample Id : GH-SS-19-0-2MSD

Manual Integrations  
**APPROVED**

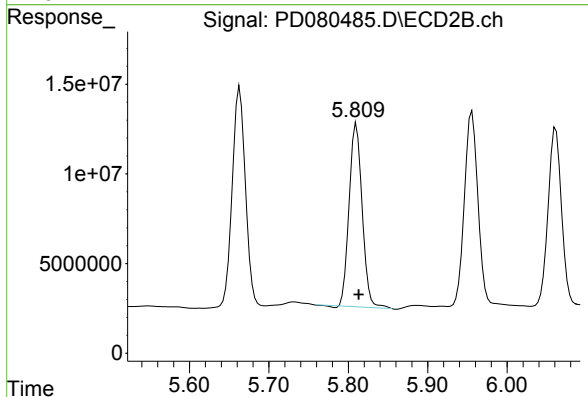
Reviewed By :Abdul Mirza 12/26/2023  
 Supervised By :Ankita Jodhani 12/28/2023



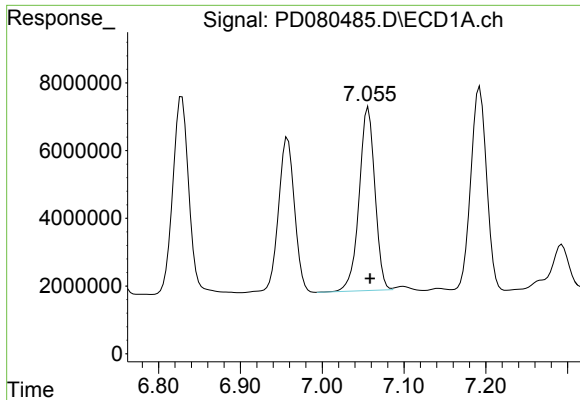
#15 Endosulfan II  
 R.T.: 5.956 min  
 Delta R.T.: -0.003 min  
 Response: 131555687  
 Conc: 48.21 ng/ml



#16 4,4'-DDD  
 R.T.: 6.741 min  
 Delta R.T.: -0.003 min  
 Response: 74328355  
 Conc: 44.37 ng/ml



#16 4,4'-DDD  
 R.T.: 5.810 min  
 Delta R.T.: -0.003 min  
 Response: 116580795  
 Conc: 45.27 ng/ml



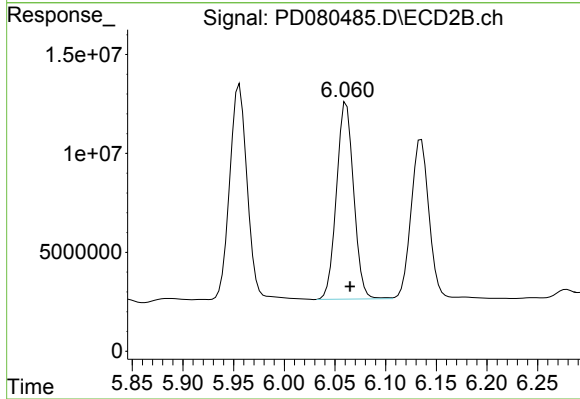
#17 4,4'-DDT

R.T.: 7.056 min  
 Delta R.T.: -0.002 min  
 Response: 72410984  
 Conc: 40.70 ng/ml

Instrument :  
 ECD\_D  
 ClientSampleId :  
 GH-SS-19-0-2MSD

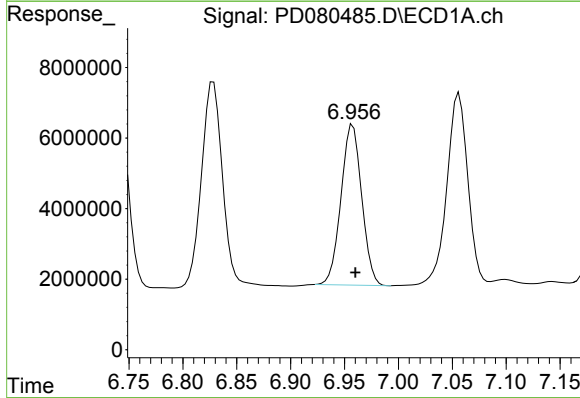
Manual Integrations  
 APPROVED

Reviewed By :Abdul Mirza 12/26/2023  
 Supervised By :Ankita Jodhani 12/28/2023



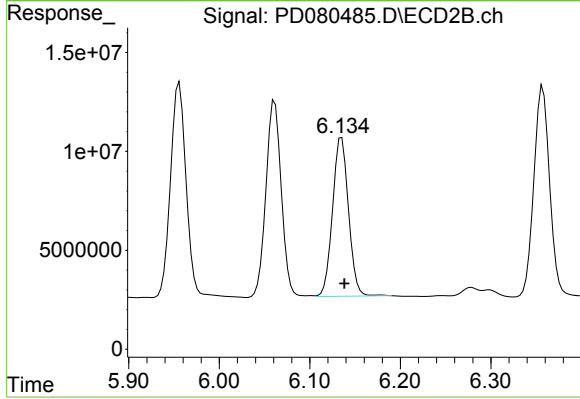
#17 4,4'-DDT

R.T.: 6.061 min  
 Delta R.T.: -0.004 min  
 Response: 117469131  
 Conc: 46.24 ng/ml



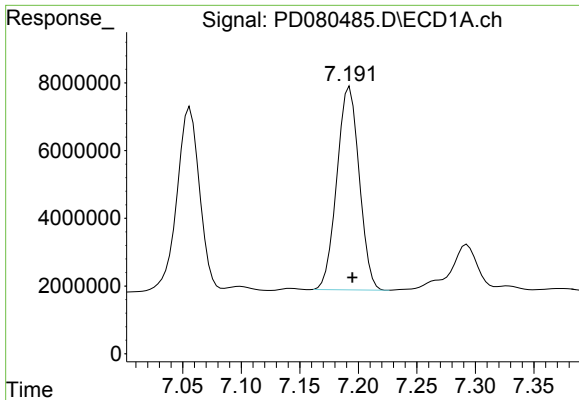
#18 Endrin aldehyde

R.T.: 6.958 min  
 Delta R.T.: -0.002 min  
 Response: 60898257  
 Conc: 42.51 ng/ml



#18 Endrin aldehyde

R.T.: 6.135 min  
 Delta R.T.: -0.003 min  
 Response: 98284159  
 Conc: 47.88 ng/ml



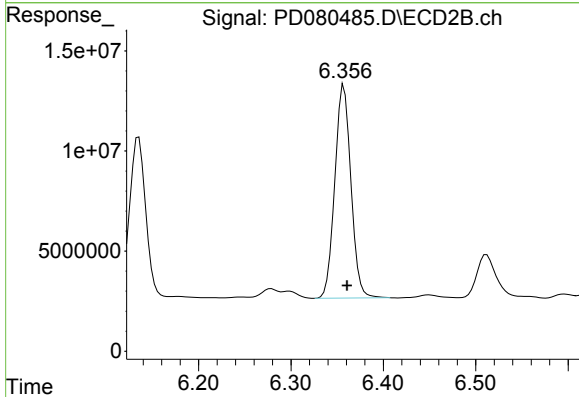
#19 Endosulfan Sulfate

R.T.: 7.193 min  
 Delta R.T.: -0.002 min  
 Response: 79699012  
 Conc: 42.03 ng/ml

Instrument :  
 ECD\_D  
 ClientSampleId :  
 GHL-SS-19-0-2MSD

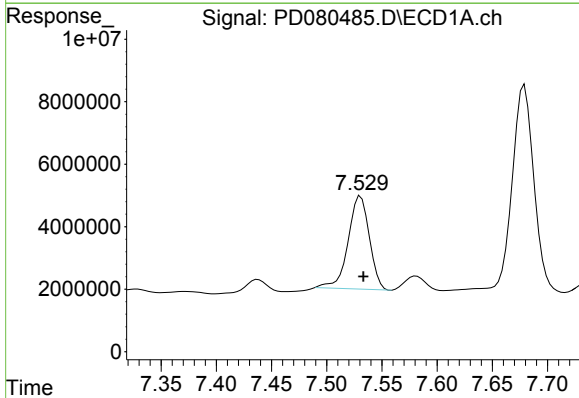
Manual Integrations  
 APPROVED

Reviewed By :Abdul Mirza 12/26/2023  
 Supervised By :Ankita Jodhani 12/28/2023



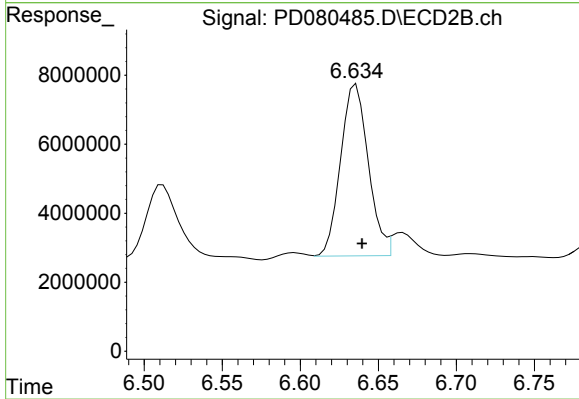
#19 Endosulfan Sulfate

R.T.: 6.357 min  
 Delta R.T.: -0.003 min  
 Response: 129038821  
 Conc: 48.13 ng/ml



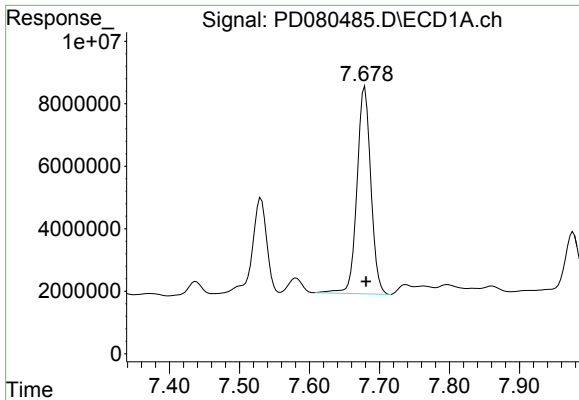
#20 Methoxychlor

R.T.: 7.531 min  
 Delta R.T.: -0.002 min  
 Response: 39826594  
 Conc: 40.29 ng/ml



#20 Methoxychlor

R.T.: 6.636 min  
 Delta R.T.: -0.004 min  
 Response: 61519744  
 Conc: 42.07 ng/ml

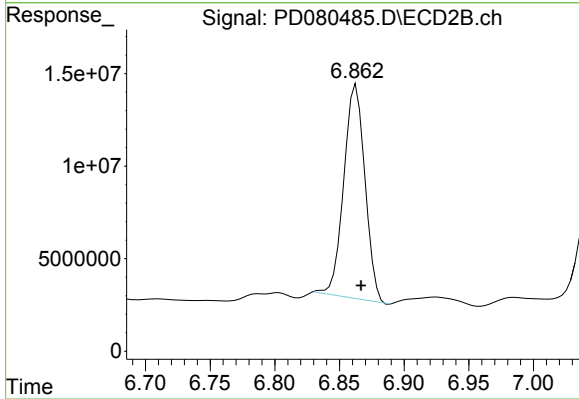


#21 Endrin ketone  
 R.T.: 7.679 min  
 Delta R.T.: -0.002 min  
 Response: 91079677  
 Conc: 43.99 ng/ml

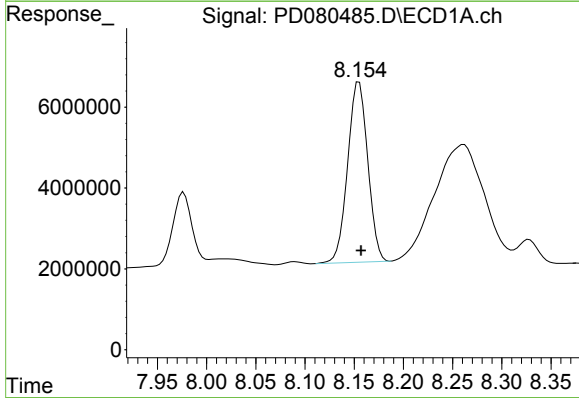
Instrument : ECD\_D  
 ClientSampleId : GH-SS-19-0-2MSD

Manual Integrations  
 APPROVED

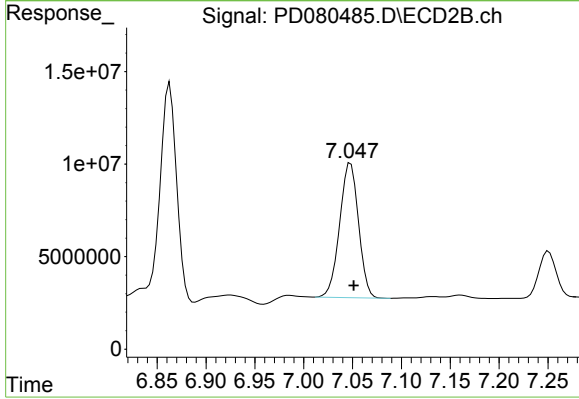
Reviewed By :Abdul Mirza 12/26/2023  
 Supervised By :Ankita Jodhani 12/28/2023



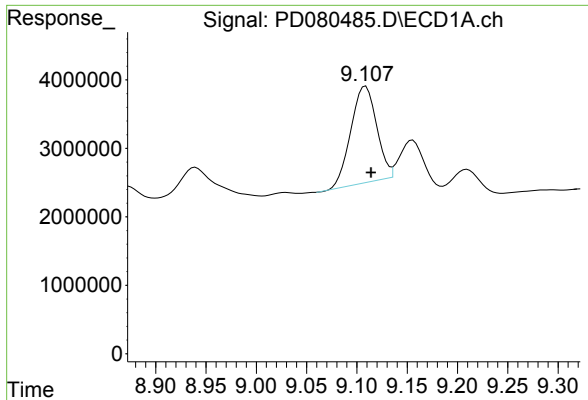
#21 Endrin ketone  
 R.T.: 6.863 min  
 Delta R.T.: -0.004 min  
 Response: 131442171  
 Conc: 42.06 ng/ml



#22 Mirex  
 R.T.: 8.155 min  
 Delta R.T.: -0.002 min  
 Response: 63549828  
 Conc: 38.85 ng/ml



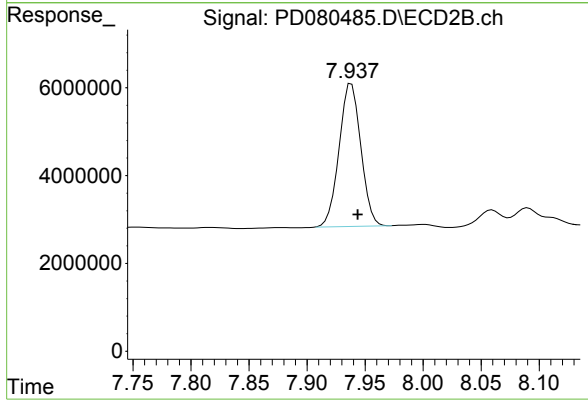
#22 Mirex  
 R.T.: 7.048 min  
 Delta R.T.: -0.003 min  
 Response: 97947908  
 Conc: 40.47 ng/ml



#28 Decachlorobiphenyl  
 R.T.: 9.109 min  
 Delta R.T.: -0.005 min  
 Response: 25018699  
 Conc: 12.36 ng/ml

Instrument : ECD\_D  
 ClientSampleId : GH-SS-19-0-2MSD

**Manual Integrations**  
**APPROVED**  
 Reviewed By :Abdul Mirza 12/26/2023  
 Supervised By :Ankita Jodhani 12/28/2023



#28 Decachlorobiphenyl  
 R.T.: 7.938 min  
 Delta R.T.: -0.006 min  
 Response: 42338109  
 Conc: 15.02 ng/ml