

Data Path : Z:\pestpcbsrv\HPCHEM1\ECD_D\Data\PD122623\
 Data File : PD080487.D
 Signal(s) : Signal #1: ECD1A.ch Signal #2: ECD2B.ch
 Acq On : 25 Dec 2023 23:30
 Operator : AR\AJ
 Sample : 05899-24
 Misc :
 ALS Vial : 35 Sample Multiplier: 1

Instrument :
 ECD_D
 ClientSampleId :
 GHL-SS-19-2-4

Integration File signal 1: autoint1.e
 Integration File signal 2: autoint2.e
 Quant Time: Dec 26 03:25:12 2023
 Quant Method : Z:\pestpcbsrv\HPCHEM1\ECD_D\Method\PD120623.M
 Quant Title : GC Extractables
 QLast Update : Wed Dec 06 14:11:45 2023
 Response via : Initial Calibration
 Integrator: ChemStation

Volume Inj. : 1 µl
 Signal #1 Phase : ZB-MR1 Signal #2 Phase: ZB-MR2
 Signal #1 Info : 30M x 0.32mm x0.5 Signal #2 Info : 30M x 0.32mm x 0.25µm

Compound	RT#1	RT#2	Resp#1	Resp#2	ng/ml	ng/ml

System Monitoring Compounds						
1) SA Tetrachlo...	3.566	2.799	24918522	291.4E6	16.533	115.921 #
28) SA Decachlor...	9.108	7.938	29013073	38947811	14.333	13.817

Target Compounds

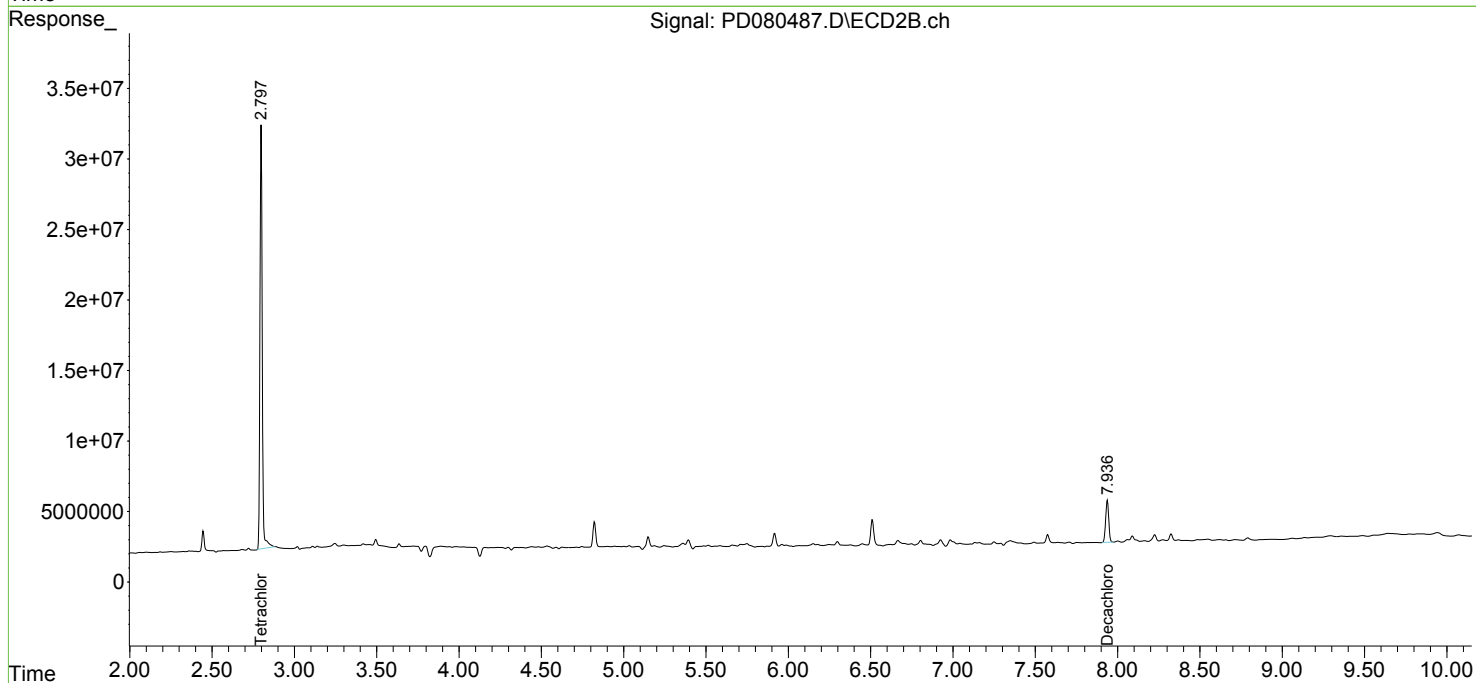
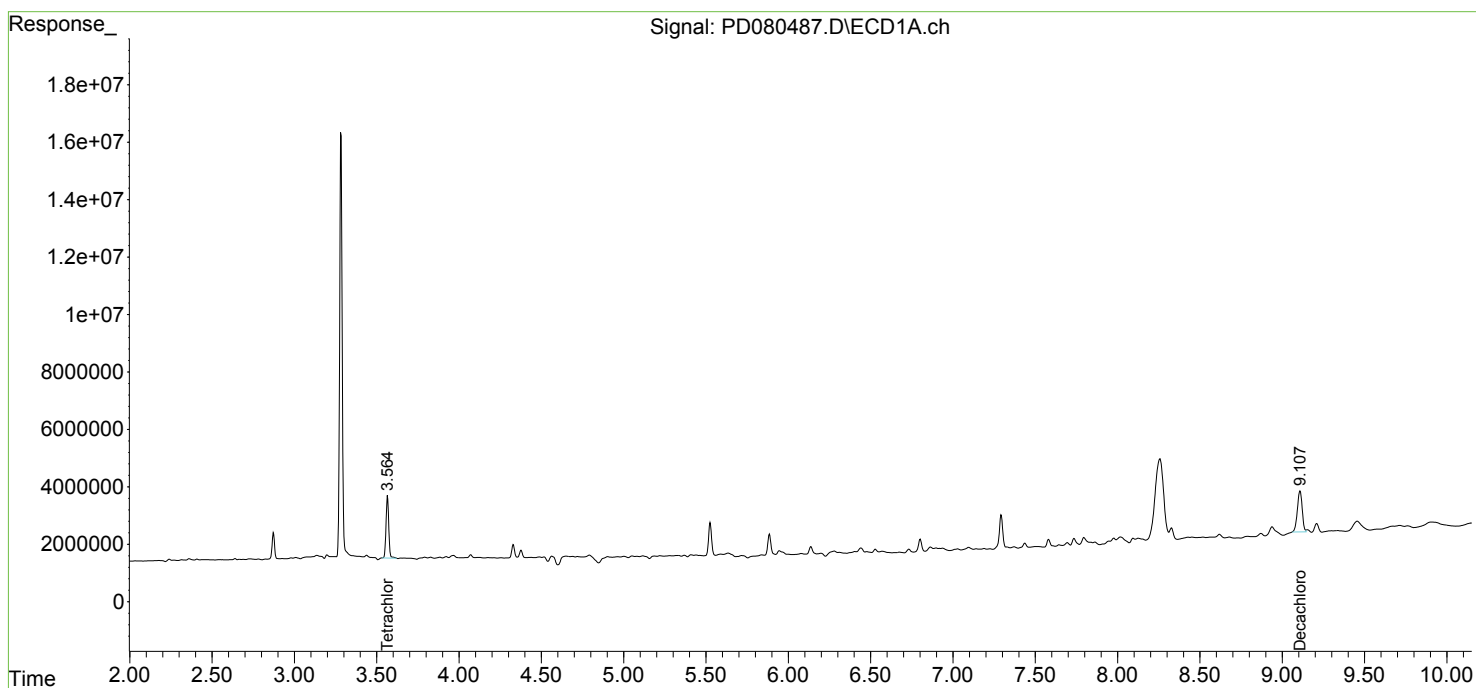
(f)=RT Delta > 1/2 Window (#)=Amounts differ by > 25% (m)=manual int.

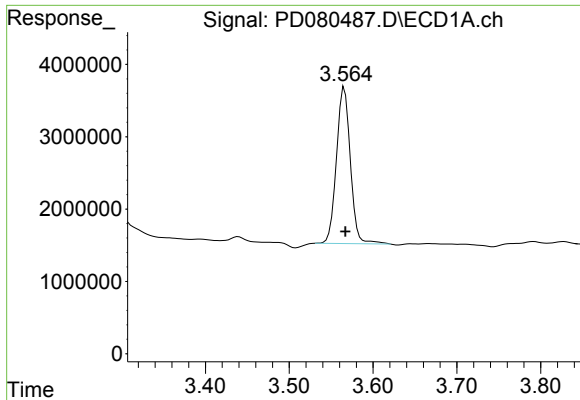
Data Path : Z:\pestpcbsrv\HPCHEM1\ECD_D\Data\PD122623\
 Data File : PD080487.D
 Signal(s) : Signal #1: ECD1A.ch Signal #2: ECD2B.ch
 Acq On : 25 Dec 2023 23:30
 Operator : AR\AJ
 Sample : 05899-24
 Misc :
 ALS Vial : 35 Sample Multiplier: 1

Instrument :
 ECD_D
ClientSampleId :
 GH-SS-19-2-4

Integration File signal 1: autoint1.e
 Integration File signal 2: autoint2.e
 Quant Time: Dec 26 03:25:12 2023
 Quant Method : Z:\pestpcbsrv\HPCHEM1\ECD_D\Method\PD120623.M
 Quant Title : GC Extractables
 QLast Update : Wed Dec 06 14:11:45 2023
 Response via : Initial Calibration
 Integrator: ChemStation

Volume Inj. : 1 µl
 Signal #1 Phase : ZB-MR1 Signal #2 Phase: ZB-MR2
 Signal #1 Info : 30M x 0.32mm x 0.5 Signal #2 Info : 30M x 0.32mm x 0.25µm

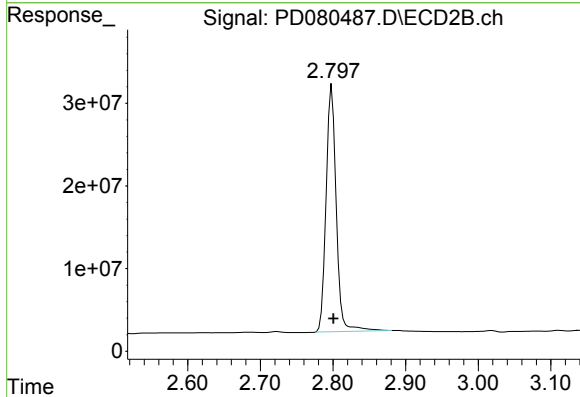




#1 Tetrachloro-m-xylene

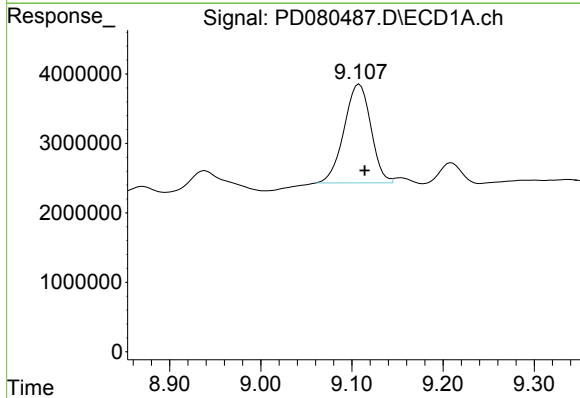
R.T.: 3.566 min
 Delta R.T.: -0.001 min
 Response: 24918522
 Conc: 16.53 ng/ml

Instrument :
 ECD_D
 ClientSampleId :
 GHJ-SS-19-2-4



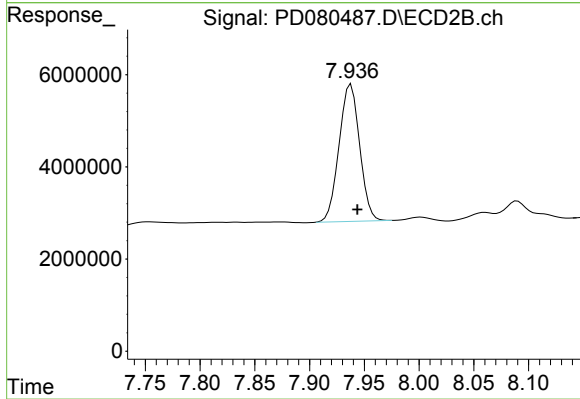
#1 Tetrachloro-m-xylene

R.T.: 2.799 min
 Delta R.T.: -0.002 min
 Response: 291402453
 Conc: 115.92 ng/ml



#28 Decachlorobiphenyl

R.T.: 9.108 min
 Delta R.T.: -0.006 min
 Response: 29013073
 Conc: 14.33 ng/ml



#28 Decachlorobiphenyl

R.T.: 7.938 min
 Delta R.T.: -0.006 min
 Response: 38947811
 Conc: 13.82 ng/ml