

Data Path : Z:\pestpcbsrv\HPCHEM1\ECD\_D\Data\PD122623\  
 Data File : PD080490.D  
 Signal(s) : Signal #1: ECD1A.ch Signal #2: ECD2B.ch  
 Acq On : 26 Dec 2023 00:23  
 Operator : AR\AJ  
 Sample : PSTDCCC050  
 Misc :  
 ALS Vial : 4 Sample Multiplier: 1

**Instrument :**

ECD\_D

**ClientSampleId :**

PSTDCCC050

**Manual Integrations**

**APPROVED**

Reviewed By :Abdul Mirza 12/26/2023  
 Supervised By :Ankita Jodhani 12/28/2023

Integration File signal 1: autoint1.e  
 Integration File signal 2: autoint2.e  
 Quant Time: Dec 26 03:26:33 2023  
 Quant Method : Z:\pestpcbsrv\HPCHEM1\ECD\_D\Method\PD120623.M  
 Quant Title : GC Extractables  
 QLast Update : Wed Dec 06 14:11:45 2023  
 Response via : Initial Calibration  
 Integrator: ChemStation

Volume Inj. : 1 µl  
 Signal #1 Phase : ZB-MR1 Signal #2 Phase: ZB-MR2  
 Signal #1 Info : 30M x 0.32mm x0.5 Signal #2 Info : 30M x 0.32mm x 0.25µm

Compound	RT#1	RT#2	Resp#1	Resp#2	ng/ml	ng/ml
-----						
System Monitoring Compounds						
1) SA Tetrachlo...	3.566	2.799	73552315	138.7E6	48.801	55.161
28) SA Decachlor...	9.109	7.938	91177333	140.7E6	45.044	49.900
Target Compounds						
2) A alpha-BHC	4.023	3.301	122.2E6	215.7E6	48.634	56.399
3) MA gamma-BHC...	4.356	3.630	115.1E6	203.6E6	48.570	56.032
4) MA Heptachlor	4.949	3.971	114.0E6	190.0E6	46.335	54.198
5) MB Aldrin	5.292	4.252	114.4E6	198.4E6	48.179	55.740
6) B beta-BHC	4.550	3.925	48075546	85511287	48.038	55.392
7) B delta-BHC	4.799	4.156	119.7E6	211.5E6	48.890	56.175
8) B Heptachlo...	5.719	4.754	108.4E6	176.9E6	49.190	53.940
9) A Endosulfan I	6.105	5.123	98856537	159.2E6	48.075	52.721
10) B gamma-Chl...	5.973	5.004	102.8E6	176.2E6	47.209m	54.656
11) B alpha-Chl...	6.054	5.068	104.0E6	173.6E6	48.216	54.027
12) B 4,4'-DDE	6.225	5.256	95162879	167.8E6	47.460	55.668
13) MA Dieldrin	6.380	5.388	103.1E6	179.5E6	47.235	54.805
14) MA Endrin	6.611	5.663	85255619	156.5E6	47.012	55.676
15) B Endosulfa...	6.828	5.955	88519587	147.5E6	46.466	54.040
16) A 4,4'-DDD	6.741	5.810	80321688	143.1E6	47.946	55.584
17) MA 4,4'-DDT	7.056	6.061	76717775	127.2E6	43.121	50.055
18) B Endrin al...	6.958	6.135	64997591	107.3E6	45.370	52.260
19) B Endosulfa...	7.193	6.357	86905104	142.9E6	45.833	53.308
20) A Methoxychlor	7.531	6.635	42079955	70718148	42.574	48.360
21) B Endrin ke...	7.679	6.863	96019429	166.2E6	46.375	53.172
22) Mirex	8.155	7.047	70622645	124.2E6	43.172	51.331
-----						

(f)=RT Delta > 1/2 Window (#)=Amounts differ by > 25% (m)=manual int.

Data Path : Z:\pestpcbsrv\HPCHEM1\ECD\_D\Data\PD122623\  
 Data File : PD080490.D  
 Signal(s) : Signal #1: ECD1A.ch Signal #2: ECD2B.ch  
 Acq On : 26 Dec 2023 00:23  
 Operator : AR\AJ  
 Sample : PSTDCCC050  
 Misc :  
 ALS Vial : 4 Sample Multiplier: 1

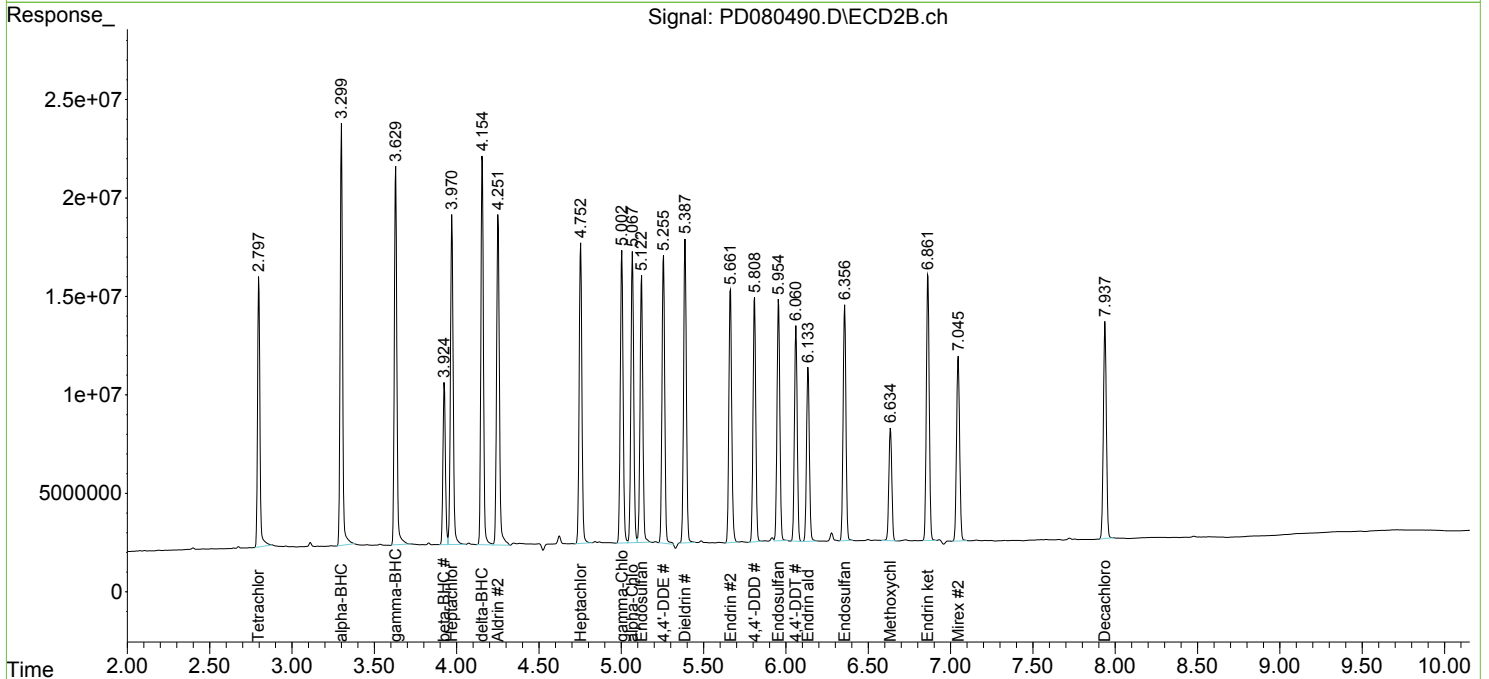
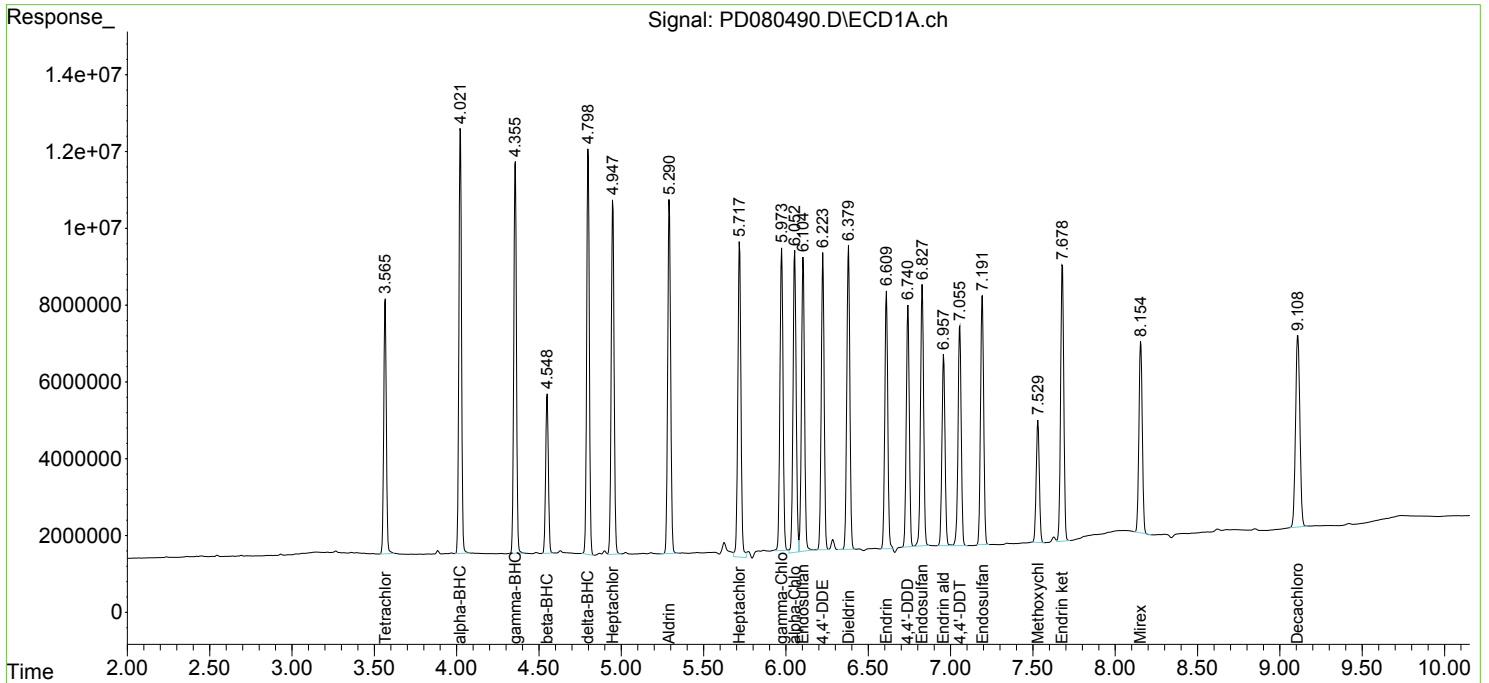
Instrument :  
 ECD\_D  
 ClientSampleId :  
 PSTDCCC050

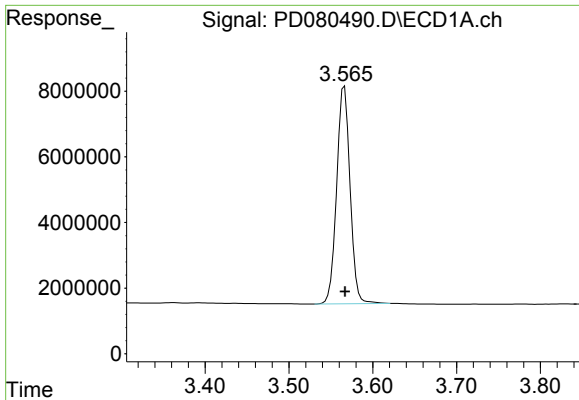
Manual Integrations  
 APPROVED

Reviewed By :Abdul Mirza 12/26/2023  
 Supervised By :Ankita Jodhani 12/28/2023

Integration File signal 1: autoint1.e  
 Integration File signal 2: autoint2.e  
 Quant Time: Dec 26 03:26:33 2023  
 Quant Method : Z:\pestpcbsrv\HPCHEM1\ECD\_D\Method\PD120623.M  
 Quant Title : GC Extractables  
 QLast Update : Wed Dec 06 14:11:45 2023  
 Response via : Initial Calibration  
 Integrator: ChemStation

Volume Inj. : 1 µl  
 Signal #1 Phase : ZB-MR1 Signal #2 Phase: ZB-MR2  
 Signal #1 Info : 30M x 0.32mm x0.5 Signal #2 Info : 30M x 0.32mm x 0.25µm

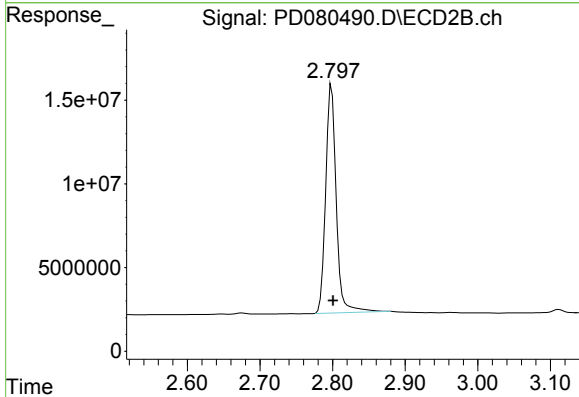




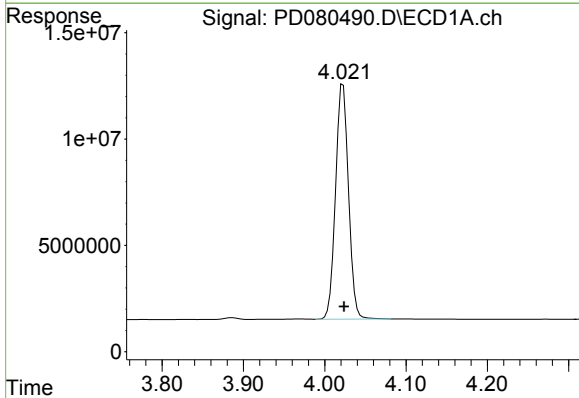
#1 Tetrachloro-m-xylene  
 R.T.: 3.566 min  
 Delta R.T.: 0.000 min  
 Response: 73552315  
 Conc: 48.80 ng/ml

Instrument : ECD\_D  
 Client Sample Id : PSTDCCC050

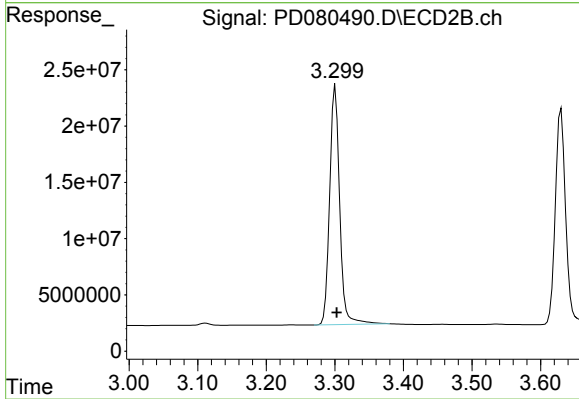
**Manual Integrations**  
**APPROVED**  
 Reviewed By :Abdul Mirza 12/26/2023  
 Supervised By :Ankita Jodhani 12/28/2023



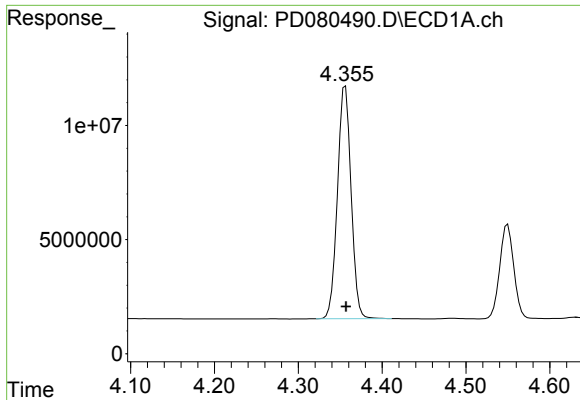
#1 Tetrachloro-m-xylene  
 R.T.: 2.799 min  
 Delta R.T.: -0.002 min  
 Response: 138664980  
 Conc: 55.16 ng/ml



#2 alpha-BHC  
 R.T.: 4.023 min  
 Delta R.T.: -0.001 min  
 Response: 122163784  
 Conc: 48.63 ng/ml



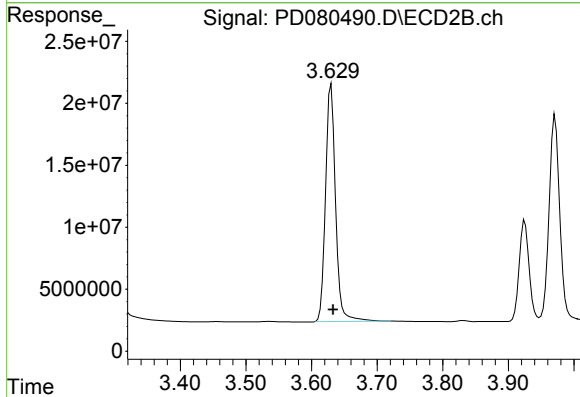
#2 alpha-BHC  
 R.T.: 3.301 min  
 Delta R.T.: -0.002 min  
 Response: 215652337  
 Conc: 56.40 ng/ml



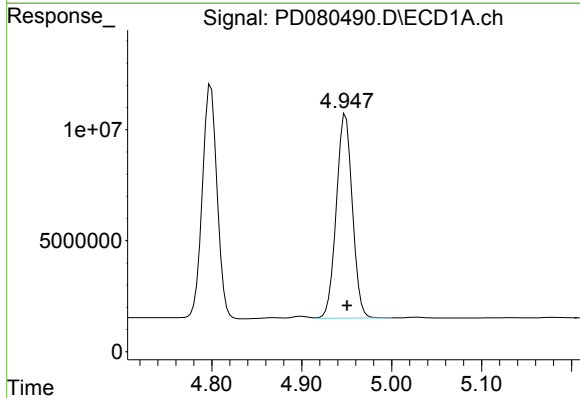
#3 gamma-BHC (Lindane)  
 R.T.: 4.356 min  
 Delta R.T.: -0.001 min  
 Response: 115073613  
 Conc: 48.57 ng/ml

Instrument : ECD\_D  
 ClientSampleId : PSTDCCC050

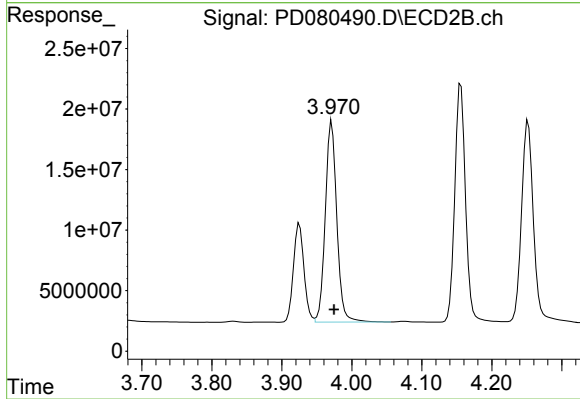
Manual Integrations  
**APPROVED**  
 Reviewed By :Abdul Mirza 12/26/2023  
 Supervised By :Ankita Jodhani 12/28/2023



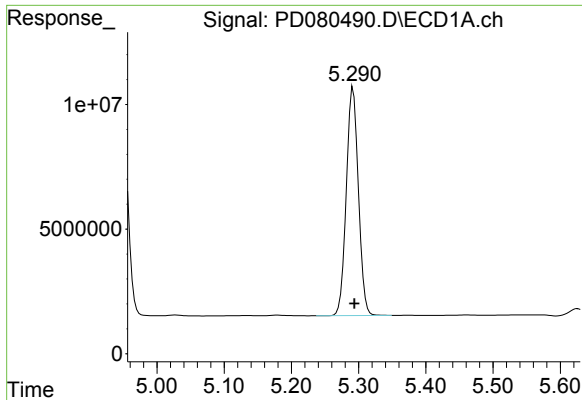
#3 gamma-BHC (Lindane)  
 R.T.: 3.630 min  
 Delta R.T.: -0.003 min  
 Response: 203622947  
 Conc: 56.03 ng/ml



#4 Heptachlor  
 R.T.: 4.949 min  
 Delta R.T.: -0.002 min  
 Response: 113950846  
 Conc: 46.33 ng/ml



#4 Heptachlor  
 R.T.: 3.971 min  
 Delta R.T.: -0.003 min  
 Response: 190040713  
 Conc: 54.20 ng/ml

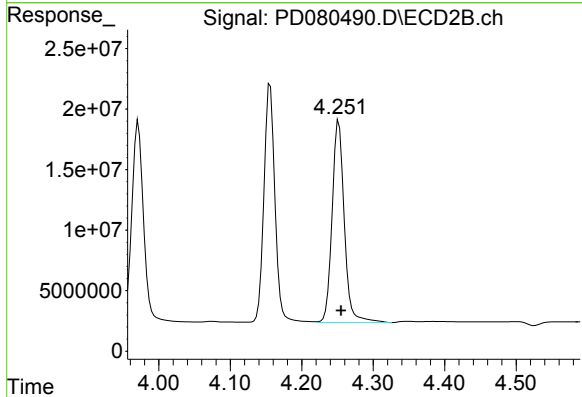


#5 Aldrin  
 R.T.: 5.292 min  
 Delta R.T.: -0.002 min  
 Response: 114410478  
 Conc: 48.18 ng/ml

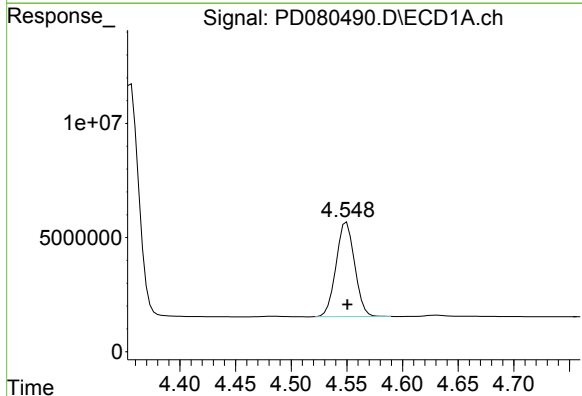
Instrument :  
 ECD\_D  
 ClientSampleId :  
 PSTDCCC050

Manual Integrations  
 APPROVED

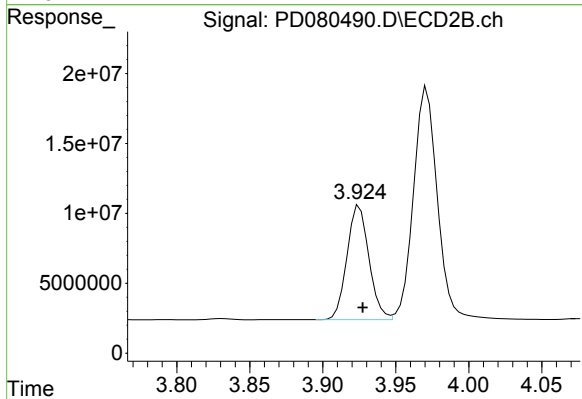
Reviewed By :Abdul Mirza 12/26/2023  
 Supervised By :Ankita Jodhani 12/28/2023



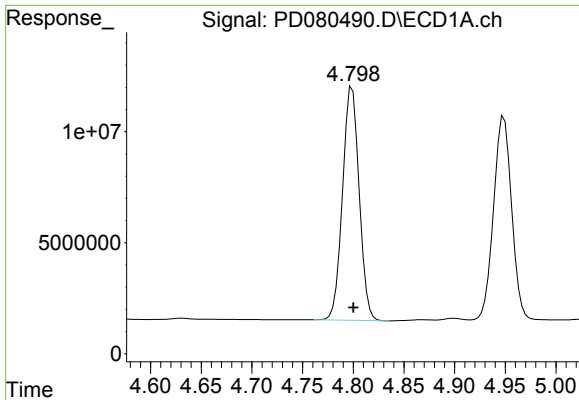
#5 Aldrin  
 R.T.: 4.252 min  
 Delta R.T.: -0.003 min  
 Response: 198441984  
 Conc: 55.74 ng/ml



#6 beta-BHC  
 R.T.: 4.550 min  
 Delta R.T.: 0.000 min  
 Response: 48075546  
 Conc: 48.04 ng/ml



#6 beta-BHC  
 R.T.: 3.925 min  
 Delta R.T.: -0.002 min  
 Response: 85511287  
 Conc: 55.39 ng/ml



#7 delta-BHC

R.T.: 4.799 min  
 Delta R.T.: -0.001 min  
 Response: 119728489  
 Conc: 48.89 ng/ml

Instrument :

ECD\_D

ClientSampleId :

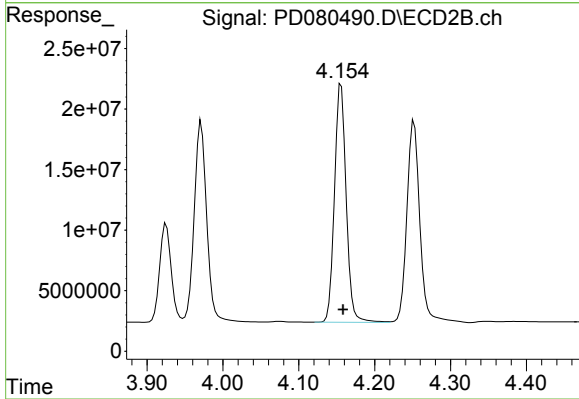
PSTDCCC050

Manual Integrations

APPROVED

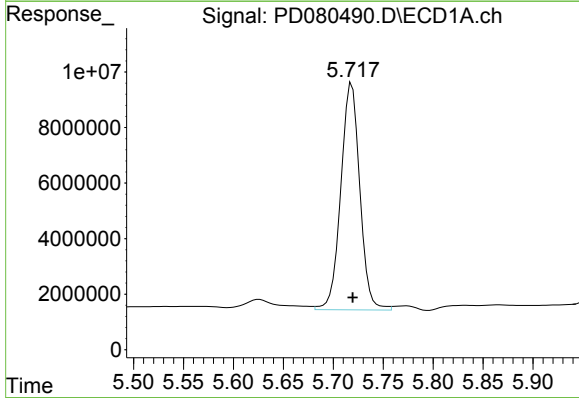
Reviewed By :Abdul Mirza 12/26/2023

Supervised By :Ankita Jodhani 12/28/2023



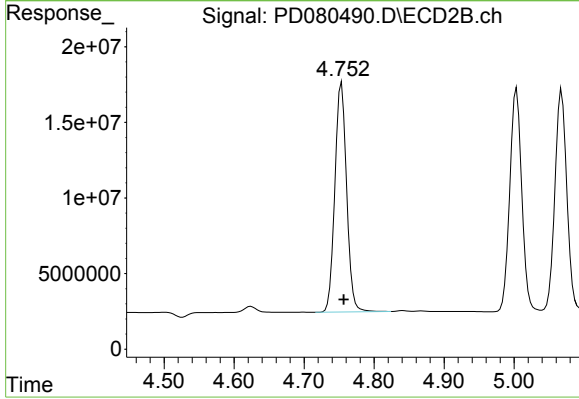
#7 delta-BHC

R.T.: 4.156 min  
 Delta R.T.: -0.002 min  
 Response: 211533573  
 Conc: 56.18 ng/ml



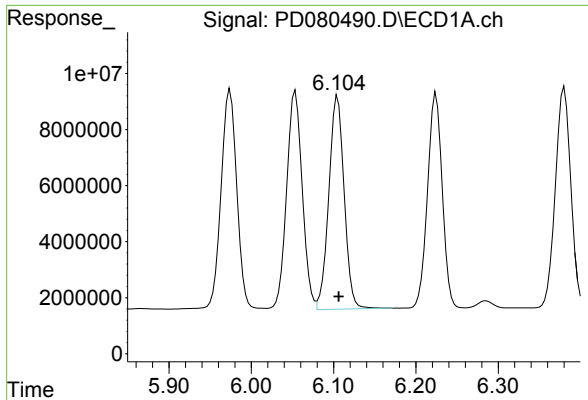
#8 Heptachlor epoxide

R.T.: 5.719 min  
 Delta R.T.: -0.001 min  
 Response: 108356749  
 Conc: 49.19 ng/ml



#8 Heptachlor epoxide

R.T.: 4.754 min  
 Delta R.T.: -0.003 min  
 Response: 176889447  
 Conc: 53.94 ng/ml



#9 Endosulfan I

R.T.: 6.105 min  
 Delta R.T.: -0.001 min  
 Response: 98856537  
 Conc: 48.08 ng/ml

Instrument :

ECD\_D

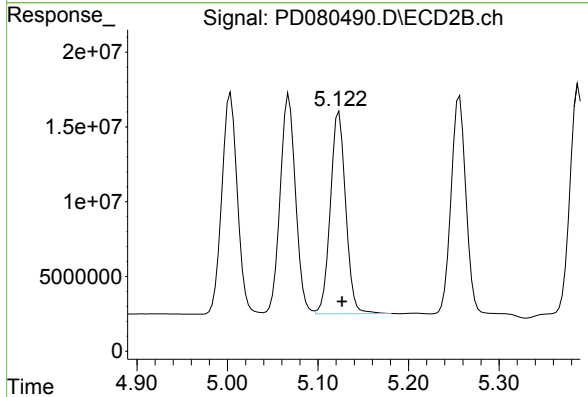
ClientSampleId :

PSTDCCC050

Manual Integrations

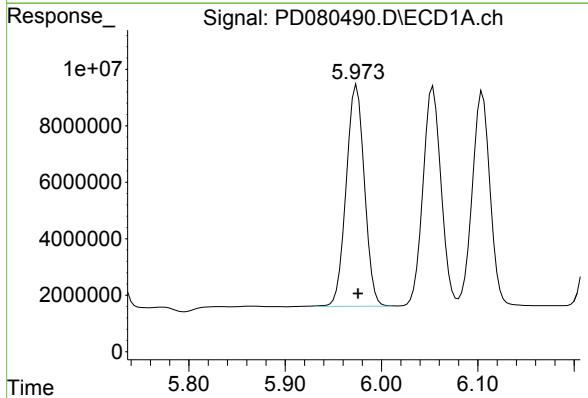
APPROVED

Reviewed By :Abdul Mirza 12/26/2023  
 Supervised By :Ankita Jodhani 12/28/2023



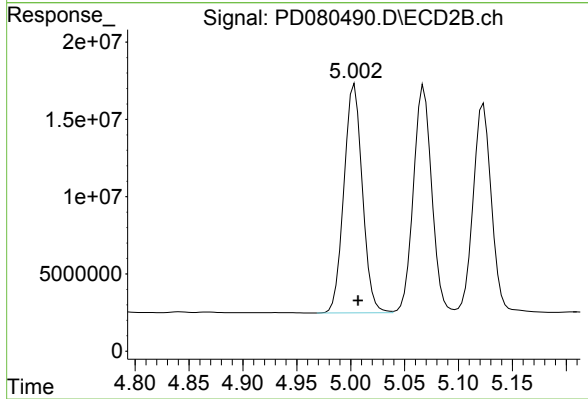
#9 Endosulfan I

R.T.: 5.123 min  
 Delta R.T.: -0.003 min  
 Response: 159178025  
 Conc: 52.72 ng/ml



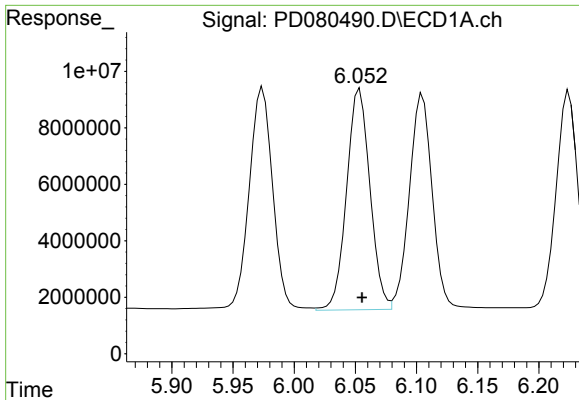
#10 gamma-Chlordane

R.T.: 5.973 min  
 Delta R.T.: -0.003 min  
 Response: 102772532  
 Conc: 47.21 ng/ml m



#10 gamma-Chlordane

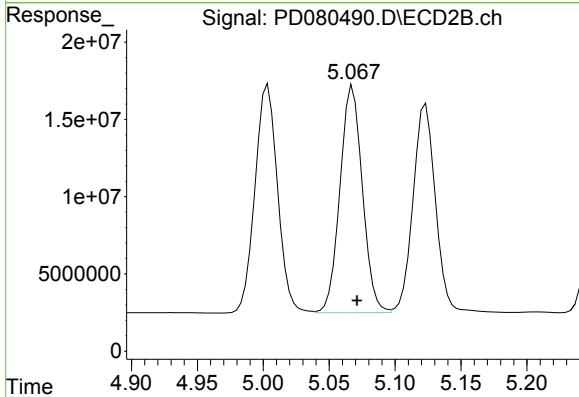
R.T.: 5.004 min  
 Delta R.T.: -0.003 min  
 Response: 176190687  
 Conc: 54.66 ng/ml



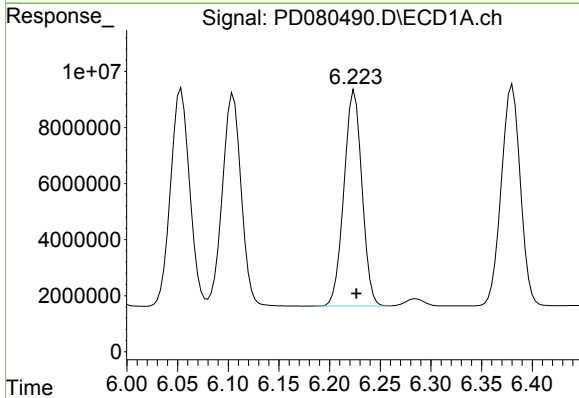
#11 alpha-Chlordane  
 R.T.: 6.054 min  
 Delta R.T.: -0.002 min  
 Response: 104010604  
 Conc: 48.22 ng/ml

Instrument : ECD\_D  
 Client Sample Id : PSTDCCC050

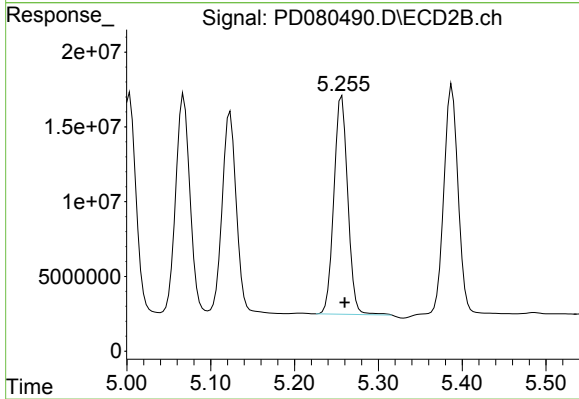
Manual Integrations  
**APPROVED**  
 Reviewed By :Abdul Mirza 12/26/2023  
 Supervised By :Ankita Jodhani 12/28/2023



#11 alpha-Chlordane  
 R.T.: 5.068 min  
 Delta R.T.: -0.003 min  
 Response: 173634224  
 Conc: 54.03 ng/ml

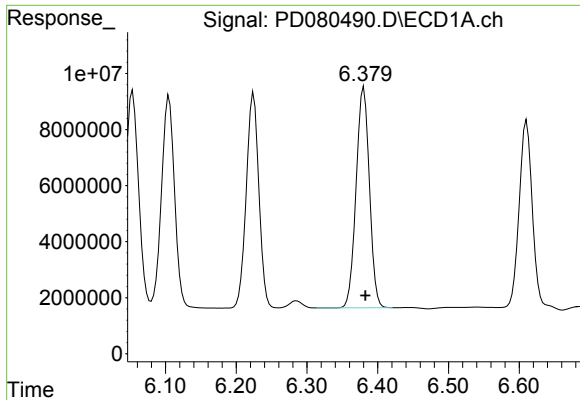


#12 4,4'-DDE  
 R.T.: 6.225 min  
 Delta R.T.: -0.002 min  
 Response: 95162879  
 Conc: 47.46 ng/ml



#12 4,4'-DDE  
 R.T.: 5.256 min  
 Delta R.T.: -0.003 min  
 Response: 167796976  
 Conc: 55.67 ng/ml





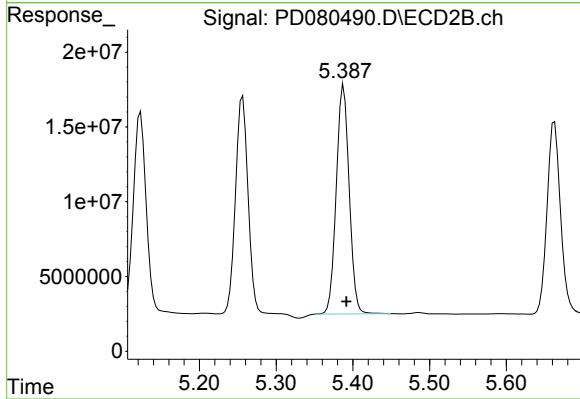
#13 Dieldrin

R.T.: 6.380 min  
 Delta R.T.: -0.002 min  
 Response: 103060251  
 Conc: 47.23 ng/ml

Instrument :  
 ECD\_D  
 ClientSampleId :  
 PSTDCCC050

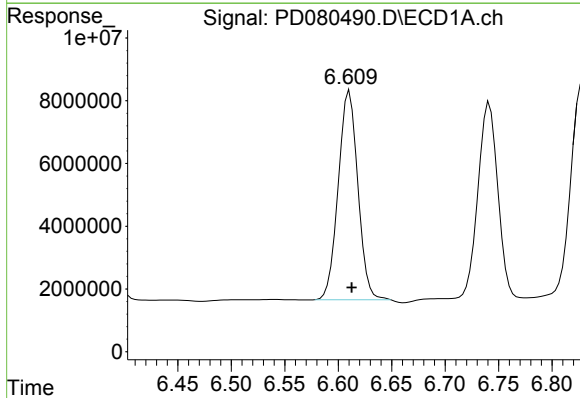
Manual Integrations  
 APPROVED

Reviewed By :Abdul Mirza 12/26/2023  
 Supervised By :Ankita Jodhani 12/28/2023



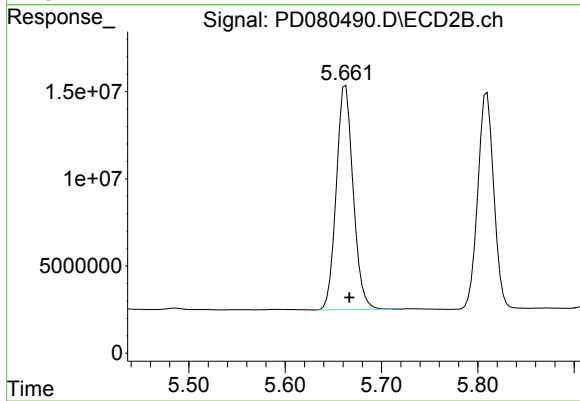
#13 Dieldrin

R.T.: 5.388 min  
 Delta R.T.: -0.004 min  
 Response: 179453845  
 Conc: 54.80 ng/ml



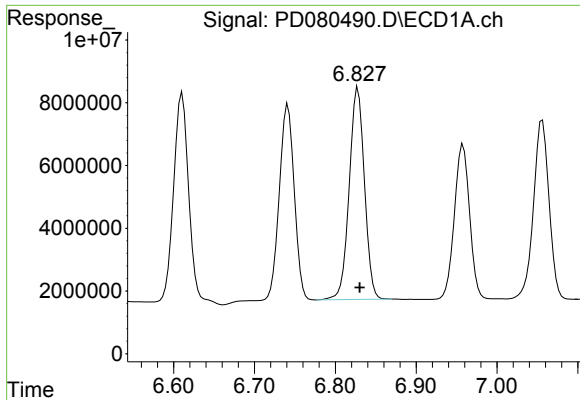
#14 Endrin

R.T.: 6.611 min  
 Delta R.T.: -0.002 min  
 Response: 85255619  
 Conc: 47.01 ng/ml



#14 Endrin

R.T.: 5.663 min  
 Delta R.T.: -0.004 min  
 Response: 156453509  
 Conc: 55.68 ng/ml



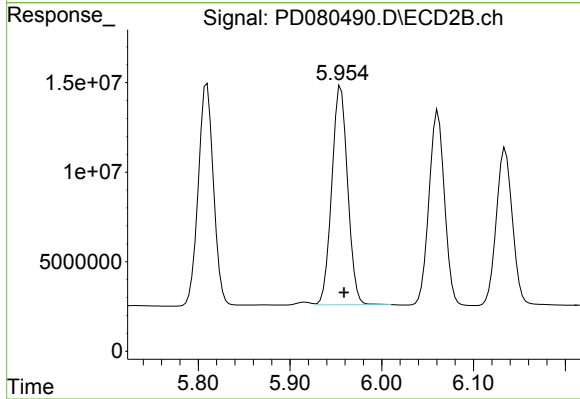
#15 Endosulfan II

R.T.: 6.828 min  
 Delta R.T.: -0.002 min  
 Response: 88519587  
 Conc: 46.47 ng/ml

Instrument :  
 ECD\_D  
 ClientSampleId :  
 PSTDCCC050

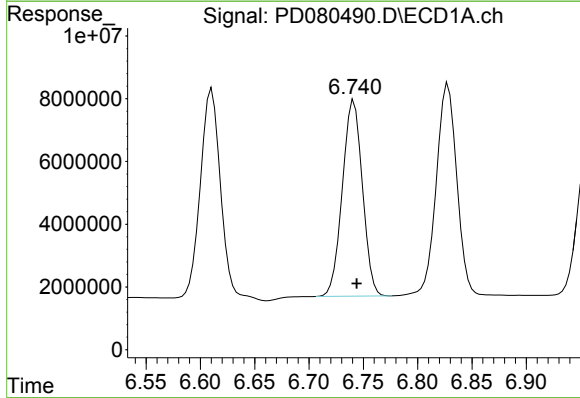
Manual Integrations  
 APPROVED

Reviewed By :Abdul Mirza 12/26/2023  
 Supervised By :Ankita Jodhani 12/28/2023



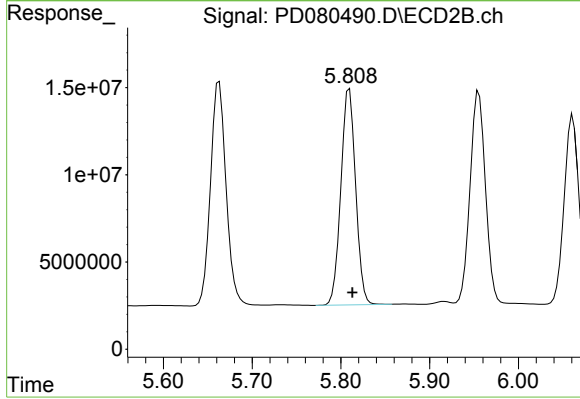
#15 Endosulfan II

R.T.: 5.955 min  
 Delta R.T.: -0.003 min  
 Response: 147451152  
 Conc: 54.04 ng/ml



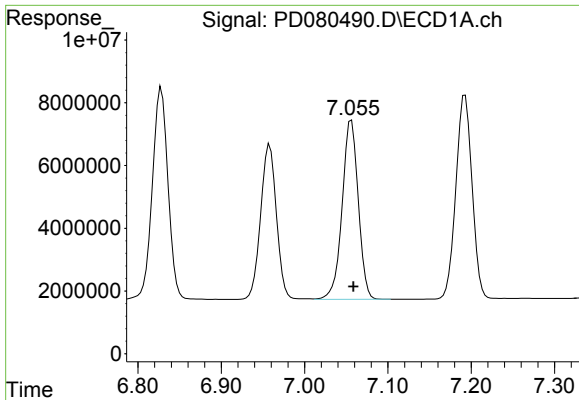
#16 4,4'-DDD

R.T.: 6.741 min  
 Delta R.T.: -0.002 min  
 Response: 80321688  
 Conc: 47.95 ng/ml



#16 4,4'-DDD

R.T.: 5.810 min  
 Delta R.T.: -0.003 min  
 Response: 143131611  
 Conc: 55.58 ng/ml



#17 4,4'-DDT

R.T.: 7.056 min  
 Delta R.T.: -0.002 min  
 Response: 76717775  
 Conc: 43.12 ng/ml

Instrument :

ECD\_D

ClientSampleId :

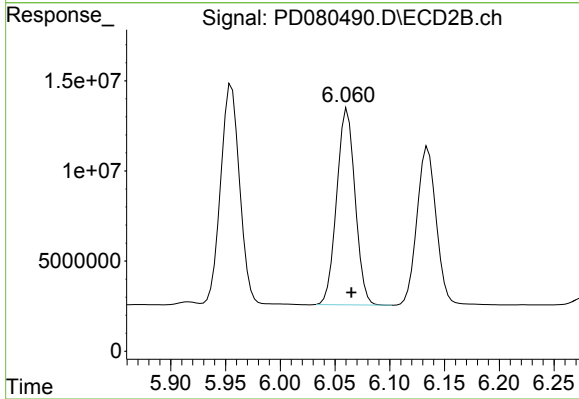
PSTDCCC050

Manual Integrations

APPROVED

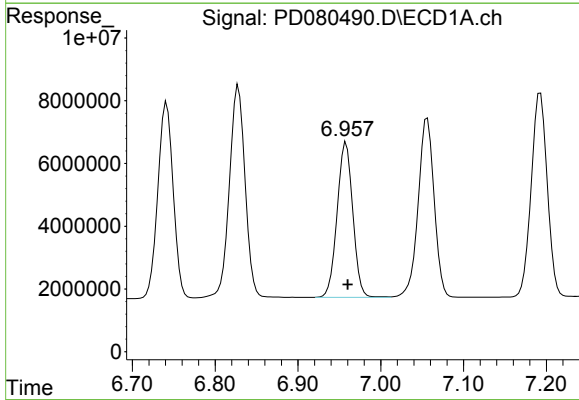
Reviewed By :Abdul Mirza 12/26/2023

Supervised By :Ankita Jodhani 12/28/2023



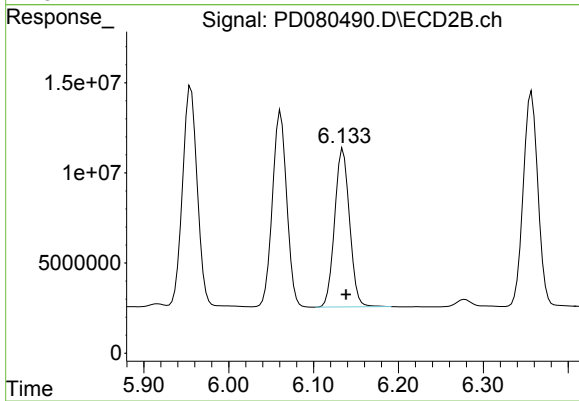
#17 4,4'-DDT

R.T.: 6.061 min  
 Delta R.T.: -0.004 min  
 Response: 127168942  
 Conc: 50.06 ng/ml



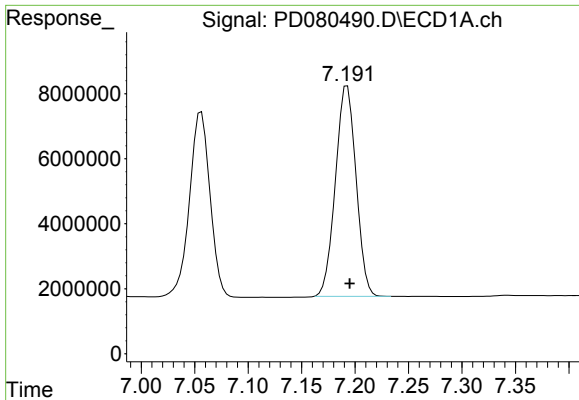
#18 Endrin aldehyde

R.T.: 6.958 min  
 Delta R.T.: -0.002 min  
 Response: 64997591  
 Conc: 45.37 ng/ml



#18 Endrin aldehyde

R.T.: 6.135 min  
 Delta R.T.: -0.003 min  
 Response: 107282950  
 Conc: 52.26 ng/ml

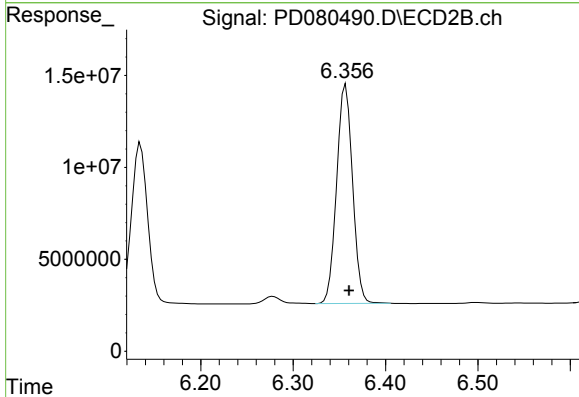


#19 Endosulfan Sulfate  
 R.T.: 7.193 min  
 Delta R.T.: -0.002 min  
 Response: 86905104  
 Conc: 45.83 ng/ml

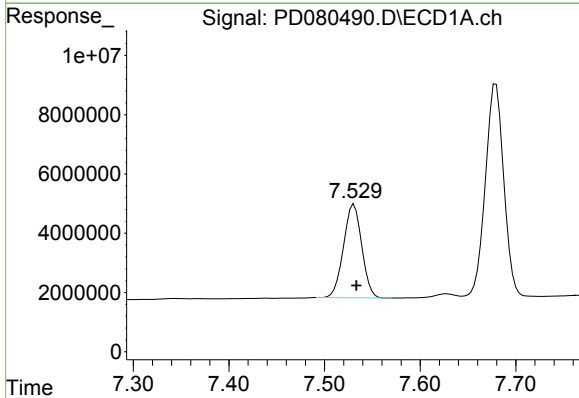
Instrument : ECD\_D  
 ClientSampleId : PSTDCCC050

Manual Integrations  
 APPROVED

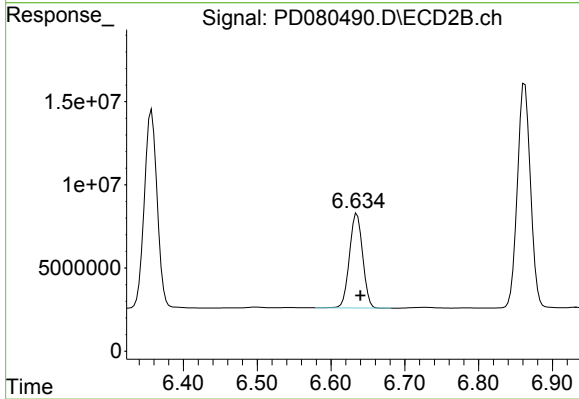
Reviewed By :Abdul Mirza 12/26/2023  
 Supervised By :Ankita Jodhani 12/28/2023



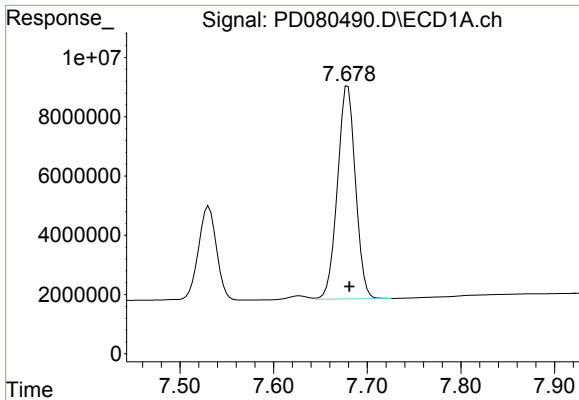
#19 Endosulfan Sulfate  
 R.T.: 6.357 min  
 Delta R.T.: -0.004 min  
 Response: 142918748  
 Conc: 53.31 ng/ml



#20 Methoxychlor  
 R.T.: 7.531 min  
 Delta R.T.: -0.002 min  
 Response: 42079955  
 Conc: 42.57 ng/ml



#20 Methoxychlor  
 R.T.: 6.635 min  
 Delta R.T.: -0.004 min  
 Response: 70718148  
 Conc: 48.36 ng/ml



#21 Endrin ketone

R.T.: 7.679 min  
 Delta R.T.: -0.002 min  
 Response: 96019429  
 Conc: 46.37 ng/ml

Instrument :

ECD\_D

ClientSampleId :

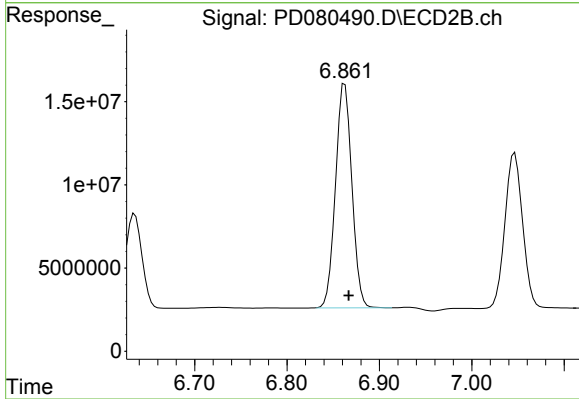
PSTDCCC050

Manual Integrations

APPROVED

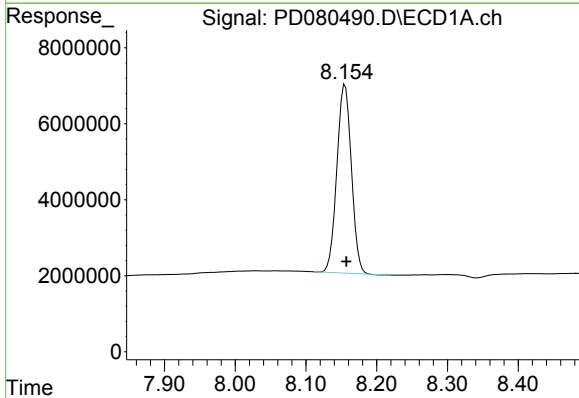
Reviewed By :Abdul Mirza 12/26/2023

Supervised By :Ankita Jodhani 12/28/2023



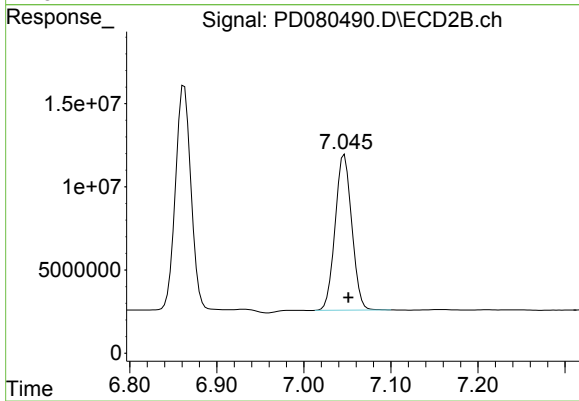
#21 Endrin ketone

R.T.: 6.863 min  
 Delta R.T.: -0.004 min  
 Response: 166178313  
 Conc: 53.17 ng/ml



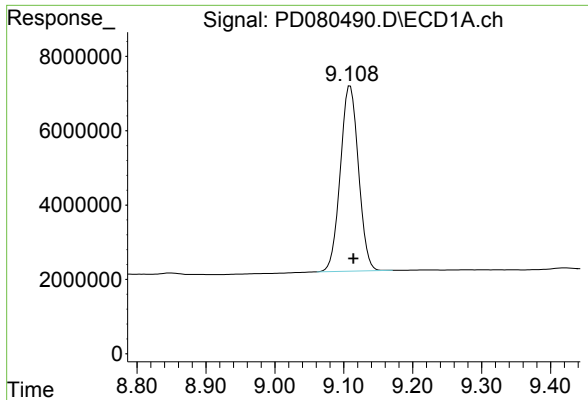
#22 Mirex

R.T.: 8.155 min  
 Delta R.T.: -0.002 min  
 Response: 70622645  
 Conc: 43.17 ng/ml



#22 Mirex

R.T.: 7.047 min  
 Delta R.T.: -0.005 min  
 Response: 124230752  
 Conc: 51.33 ng/ml



#28 Decachlorobiphenyl  
R.T.: 9.109 min  
Delta R.T.: -0.005 min  
Response: 91177333  
Conc: 45.04 ng/ml

Instrument :

ECD\_D

ClientSampleId :

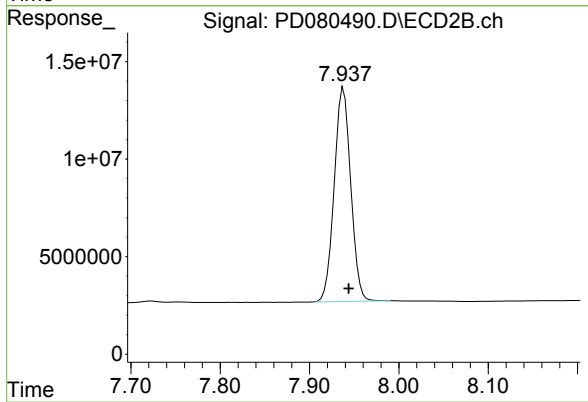
PSTDCCC050

Manual Integrations

APPROVED

Reviewed By :Abdul Mirza 12/26/2023

Supervised By :Ankita Jodhani 12/28/2023



#28 Decachlorobiphenyl  
R.T.: 7.938 min  
Delta R.T.: -0.006 min  
Response: 140665139  
Conc: 49.90 ng/ml