

Data Path : Z:\pestpcbsrv\HPCHEM1\ECD\_D\Data\PD122624\  
 Data File : PD087342.D  
 Signal(s) : Signal #1: ECD1A.ch Signal #2: ECD2B.ch  
 Acq On : 26 Dec 2024 14:09  
 Operator : AR\AJ  
 Sample : P5267-05  
 Misc :  
 ALS Vial : 9 Sample Multiplier: 1

Instrument :  
 ECD\_D  
 ClientSampleId :  
 E28Z7

Integration File signal 1: autoint1.e  
 Integration File signal 2: autoint2.e  
 Quant Time: Dec 26 21:47:04 2024  
 Quant Method : Z:\pestpcbsrv\HPCHEM1\ECD\_D\Method\PD122024CLP.M  
 Quant Title : GC Extractables  
 QLast Update : Fri Dec 20 23:32:53 2024  
 Response via : Initial Calibration  
 Integrator: ChemStation

Volume Inj. : 1 µl  
 Signal #1 Phase : ZB-MR1 Signal #2 Phase: ZB-MR2  
 Signal #1 Info : 30M x 0.32mm x0.5 Signal #2 Info : 30M x 0.32mm x 0.25µm

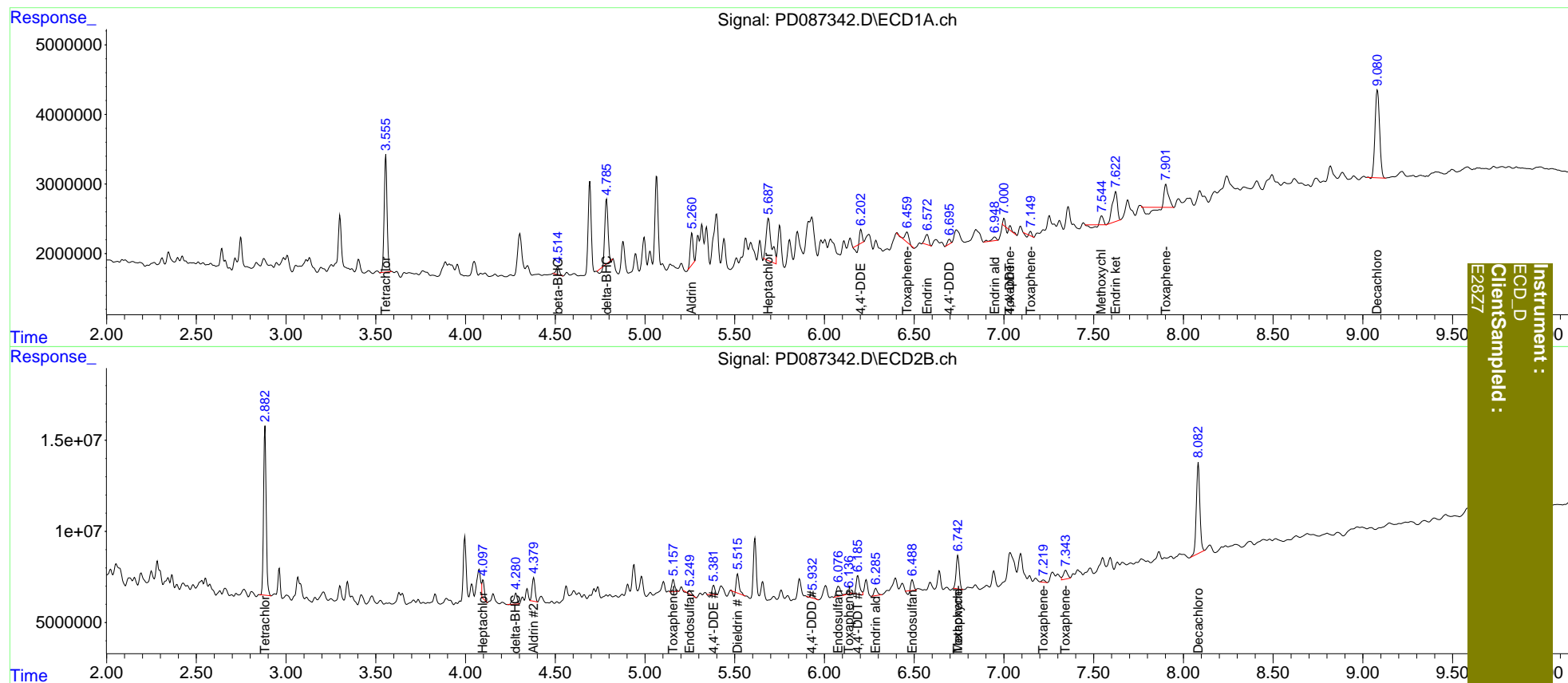
Compound	RT#1	RT#2	Resp#1	Resp#2	ng/ml	ng/ml
-----						
System Monitoring Compounds						
1) SA Tetrachlo...	3.556	2.883	18903621	94424935	9.233	8.114
2) SA Decachlor...	9.081	8.083	22351250	68159056	7.318	5.174 #
Target Compounds						
2) A alpha-BHC	0.000	3.420	0	1455828	N.D.	<MDL
4) MA Heptachlor	4.948	4.098	-860483	9969164	N.D.	0.577
5) MB Aldrin	5.262	4.380	4851579	14597689	1.245	0.872 #
7) B delta-BHC	4.786	4.281	10625956	7953522	2.673	0.458 #
8) B Heptachlo...	5.688	4.873	12474564	-224265	3.456	N.D. #
10) B trans-Chl...	0.000	5.132	0	286113	N.D.	<MDL
11) B cis-Chlor...	0.000	5.203	0	1298084	N.D.	<MDL
12) B 4,4'-DDE	6.204	5.383	841114	4289050	0.254	0.288
13) MA Dieldrin	6.288f	5.516	-1533041	10360718	N.D.	0.677
14) MA Endrin	6.572	5.796	2141545	-458516	0.717	N.D. #
16) A 4,4'-DDD	6.697	5.931	762669	2891763	0.294	0.237
17) MA 4,4'-DDT	7.035	6.186	876817	13068551	0.327	1.037 #
18) B Endrin al...	6.949	6.287	978767	4957998	0.417	0.475
19) B Endosulfa...	7.149	6.490	174932	4557076	<MDL	0.345 #
20) A Methoxychlor	7.545f	6.744	584314	22333668	0.393	3.831 #
21) B Endrin ke...	7.623	7.035f	8431382	-12624011	2.628	N.D. #
22) Toxaphene-1	6.288f	5.158	-1533041	7918162	N.D.	98.093
23) Toxaphene-2	6.460	6.138	2491131	2001035	80.047	22.613 #
24) Toxaphene-3	7.035	6.744	876817	22333668	10.146	78.345 #
25) Toxaphene-4	7.149	7.220	174932	1537264	2.707	7.688 #
26) Toxaphene-5	7.903	7.344	2495338	7864489	53.317	52.945
-----						

(f)=RT Delta > 1/2 Window (#)=Amounts differ by > 25% (m)=manual int.

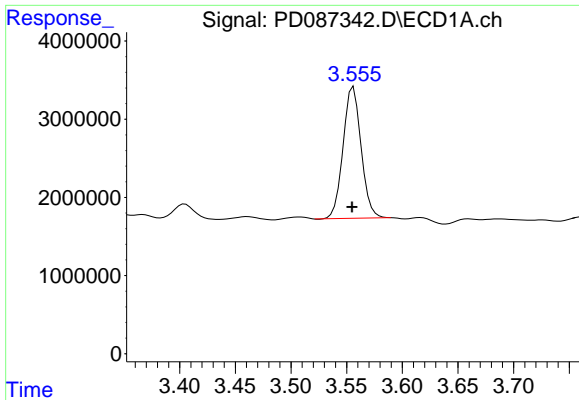
Data Path : Z:\pestpcbsrv\HPCHEM1\ECD\_D\Data\PD122624\  
 Data File : PD087342.D  
 Signal(s) : Signal #1: ECD1A.ch Signal #2: ECD2B.ch  
 Acq On : 26 Dec 2024 14:09  
 Operator : AR\AJ  
 Sample : P5267-05  
 Misc :  
 ALS Vial : 9 Sample Multiplier: 1

Integration File signal 1: autoint1.e  
 Integration File signal 2: autoint2.e  
 Quant Time: Dec 26 21:47:04 2024  
 Quant Method : Z:\pestpcbsrv\HPCHEM1\ECD\_D\Method\PD122024CLP.M  
 Quant Title : GC Extractables  
 QLast Update : Fri Dec 20 23:32:53 2024  
 Response via : Initial Calibration  
 Integrator: ChemStation

Volume Inj. : 1 µl  
 Signal #1 Phase : ZB-MR1 Signal #2 Phase: ZB-MR2  
 Signal #1 Info : 30M x 0.32mm x0.5 Signal #2 Info : 30M x 0.32mm x 0.25µm

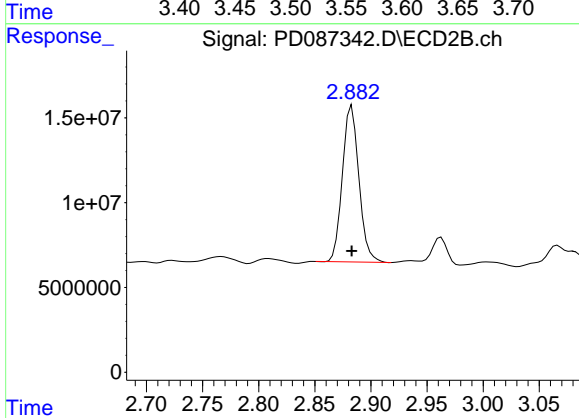


Instrument : ECD\_D  
 ClientSampled : E2827

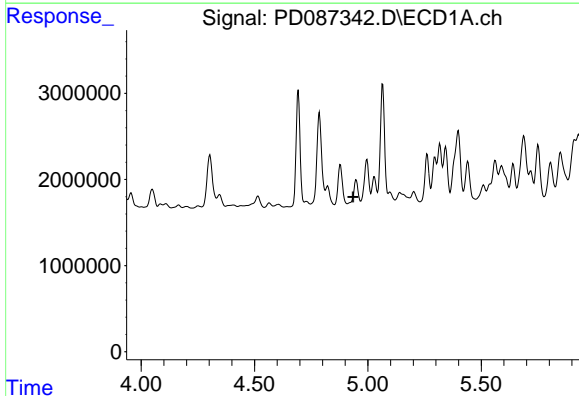


#1 Tetrachloro-m-xylene  
 R.T.: 3.556 min  
 Delta R.T.: 0.001 min  
 Response: 18903621  
 Conc: 9.23 ng/ml

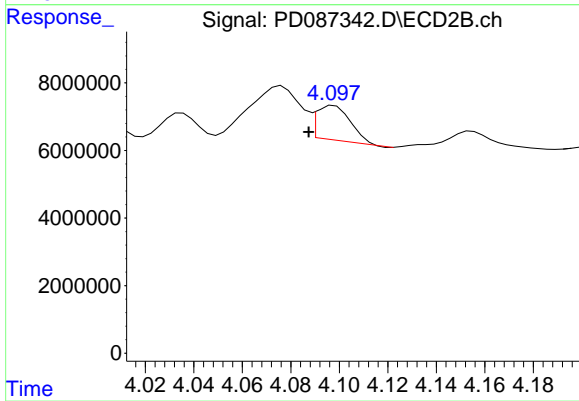
Instrument :  
 ECD\_D  
 ClientSampleId :  
 E28Z7



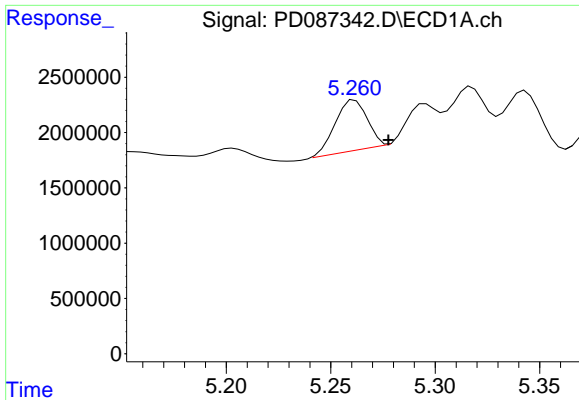
#1 Tetrachloro-m-xylene  
 R.T.: 2.883 min  
 Delta R.T.: 0.000 min  
 Response: 94424935  
 Conc: 8.11 ng/ml



#4 Heptachlor  
 R.T.: 4.948 min  
 Delta R.T.: 0.013 min  
 Response: -860483  
 Conc: N.D.

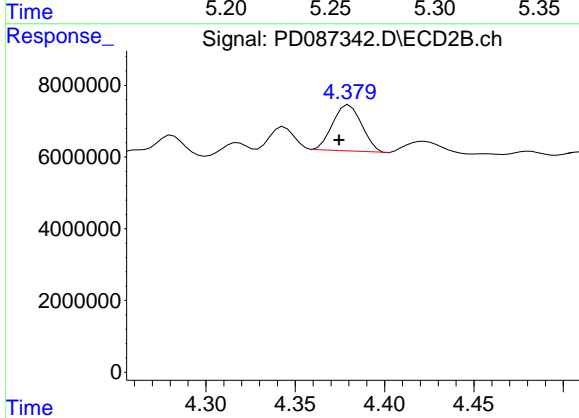


#4 Heptachlor  
 R.T.: 4.098 min  
 Delta R.T.: 0.011 min  
 Response: 9969164  
 Conc: 0.58 ng/ml

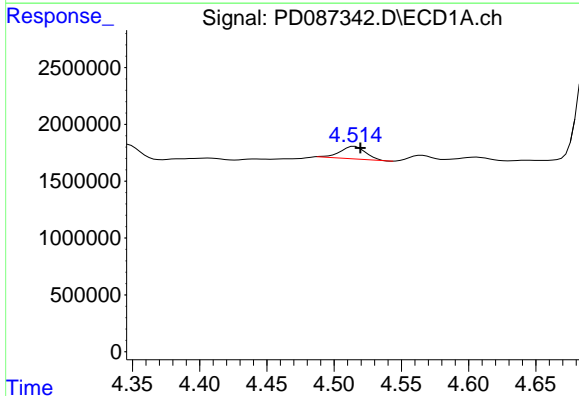


#5 Aldrin  
 R.T.: 5.262 min  
 Delta R.T.: -0.016 min  
 Response: 4851579  
 Conc: 1.25 ng/ml

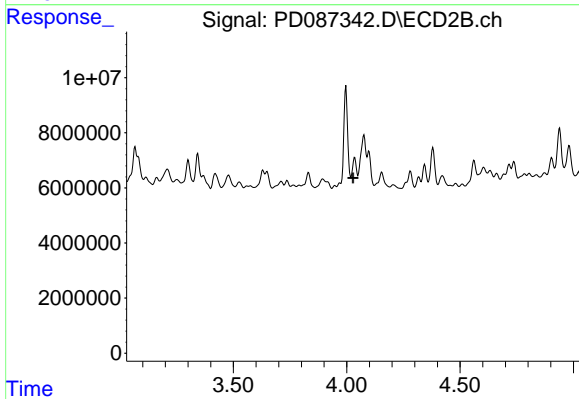
Instrument :  
 ECD\_D  
 ClientSampleId :  
 E28Z7



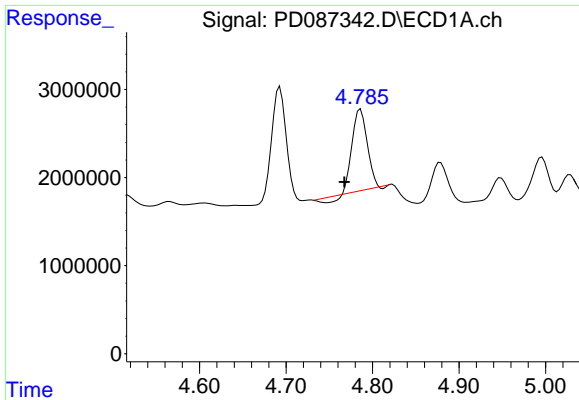
#5 Aldrin  
 R.T.: 4.380 min  
 Delta R.T.: 0.006 min  
 Response: 14597689  
 Conc: 0.87 ng/ml



#6 beta-BHC  
 R.T.: 4.515 min  
 Delta R.T.: -0.004 min  
 Response: 1460299  
 Conc: 0.84 ng/ml



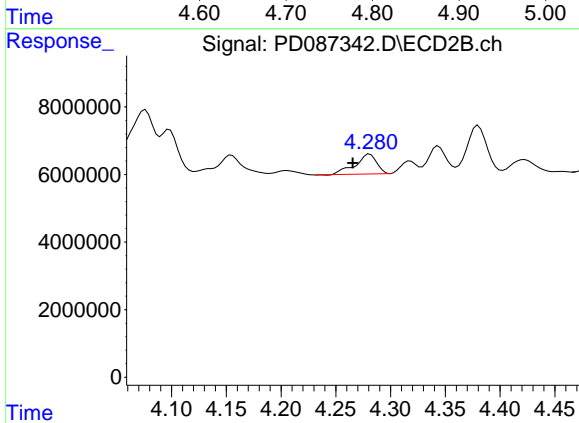
#6 beta-BHC  
 R.T.: 4.035 min  
 Delta R.T.: 0.007 min  
 Response: -19880010  
 Conc: N.D.



#7 delta-BHC

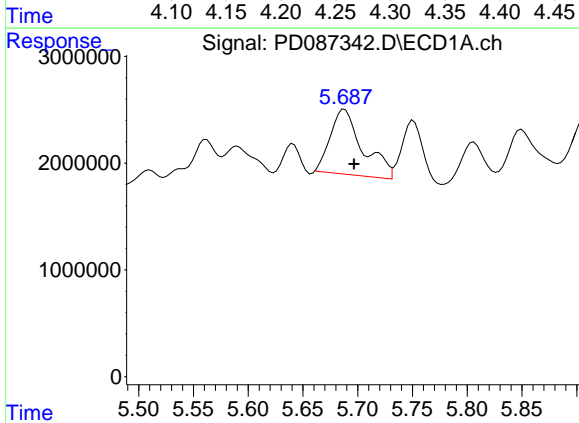
R.T.: 4.786 min  
 Delta R.T.: 0.019 min  
 Response: 10625956  
 Conc: 2.67 ng/ml

Instrument :  
 ECD\_D  
 ClientSampleId :  
 E28Z7



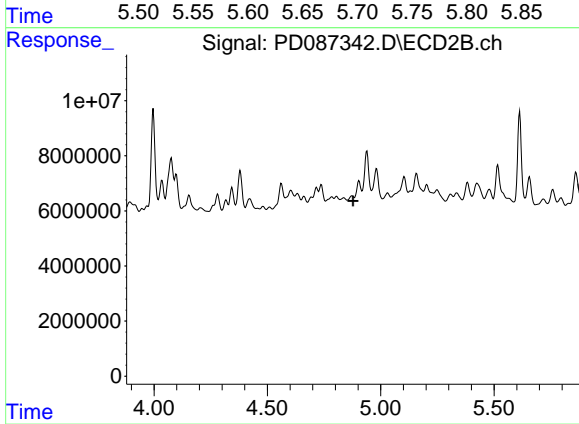
#7 delta-BHC

R.T.: 4.281 min  
 Delta R.T.: 0.016 min  
 Response: 7953522  
 Conc: 0.46 ng/ml



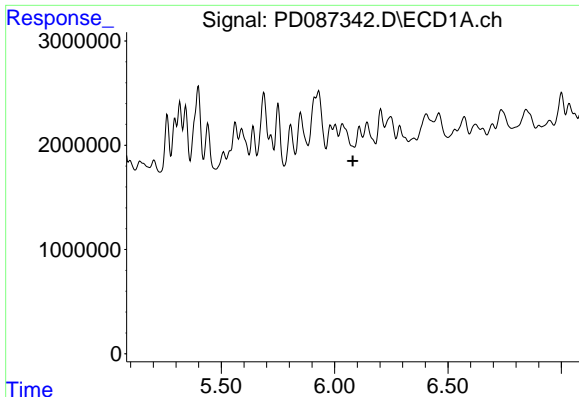
#8 Heptachlor epoxide

R.T.: 5.688 min  
 Delta R.T.: -0.009 min  
 Response: 12474564  
 Conc: 3.46 ng/ml



#8 Heptachlor epoxide

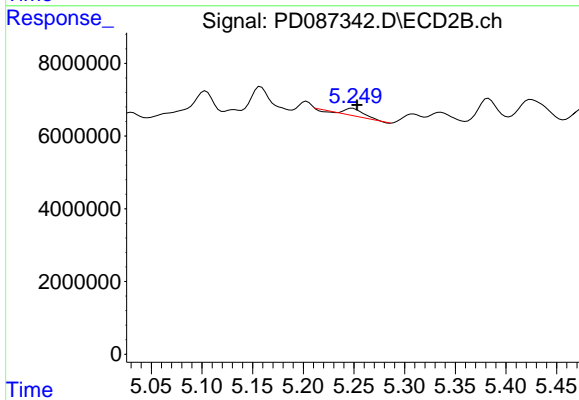
R.T.: 4.873 min  
 Delta R.T.: -0.005 min  
 Response: -224265  
 Conc: N.D.



#9 Endosulfan I

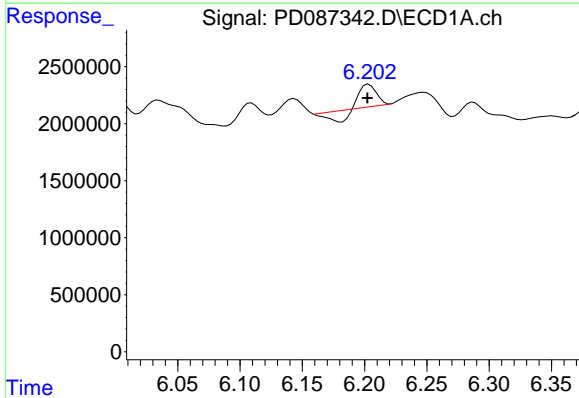
R.T.: 6.110 min  
 Delta R.T.: 0.030 min  
 Response: -1941624  
 Conc: N.D.

Instrument :  
 ECD\_D  
 ClientSampleId :  
 E28Z7



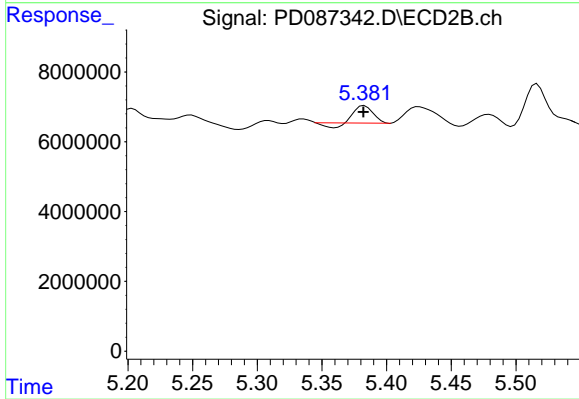
#9 Endosulfan I

R.T.: 5.249 min  
 Delta R.T.: -0.004 min  
 Response: 2729593  
 Conc: 0.19 ng/ml



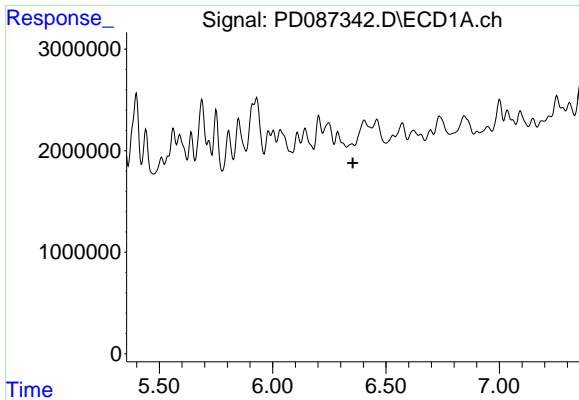
#12 4,4'-DDE

R.T.: 6.204 min  
 Delta R.T.: 0.002 min  
 Response: 841114  
 Conc: 0.25 ng/ml



#12 4,4'-DDE

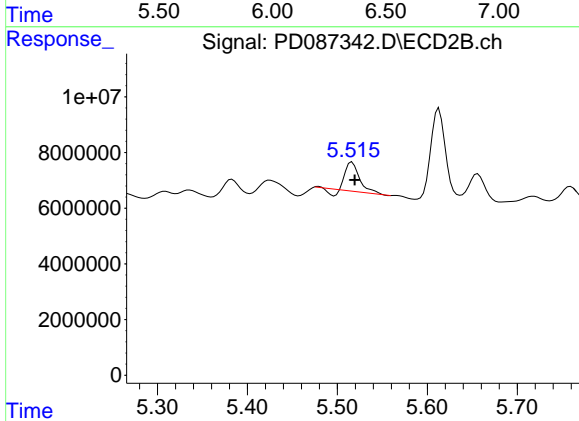
R.T.: 5.383 min  
 Delta R.T.: 0.000 min  
 Response: 4289050  
 Conc: 0.29 ng/ml



#13 Dieldrin

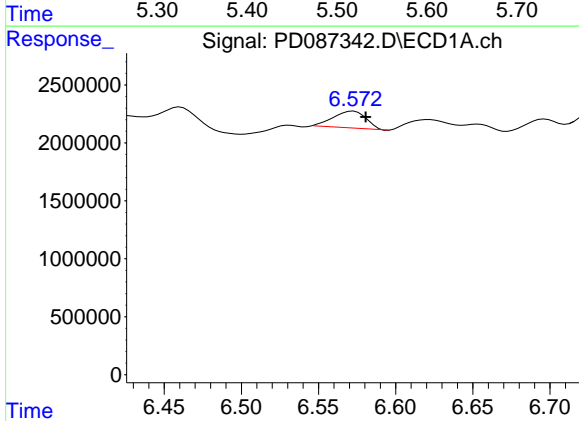
R.T.: 6.288 min  
 Delta R.T.: -0.065 min  
 Response: -1533041  
 Conc: N.D.

Instrument :  
 ECD\_D  
 ClientSampleId :  
 E28Z7



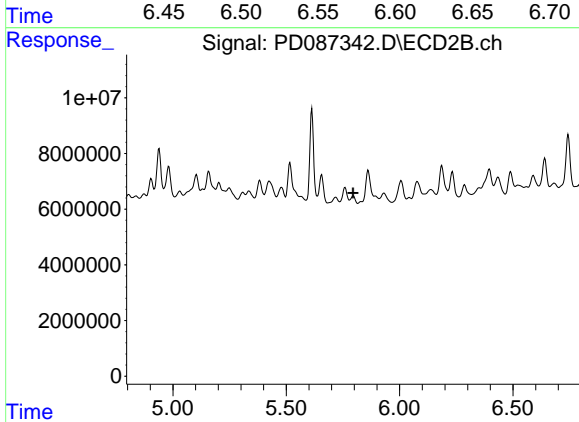
#13 Dieldrin

R.T.: 5.516 min  
 Delta R.T.: -0.003 min  
 Response: 10360718  
 Conc: 0.68 ng/ml



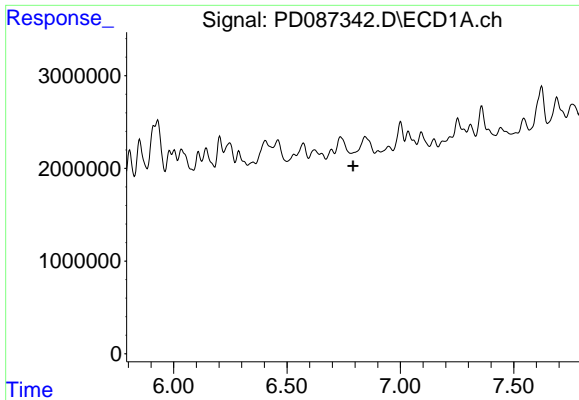
#14 Endrin

R.T.: 6.572 min  
 Delta R.T.: -0.009 min  
 Response: 2141545  
 Conc: 0.72 ng/ml



#14 Endrin

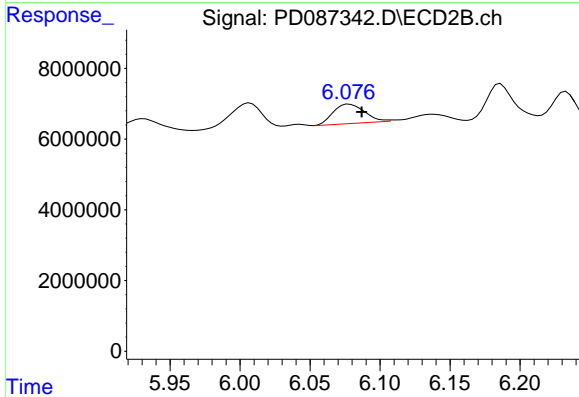
R.T.: 5.796 min  
 Delta R.T.: 0.000 min  
 Response: -458516  
 Conc: N.D.



#15 Endosulfan II

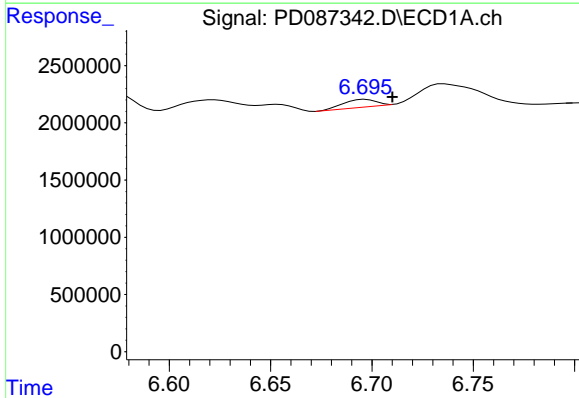
R.T.: 6.846 min  
 Delta R.T.: 0.054 min  
 Response: -3526992  
 Conc: N.D.

Instrument :  
 ECD\_D  
 ClientSampleId :  
 E28Z7



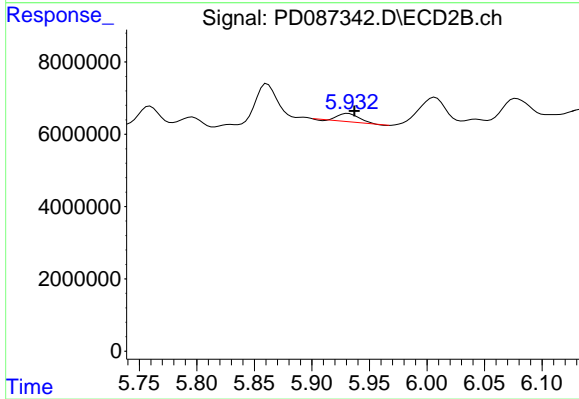
#15 Endosulfan II

R.T.: 6.078 min  
 Delta R.T.: -0.009 min  
 Response: 8550545  
 Conc: 0.63 ng/ml



#16 4,4'-DDD

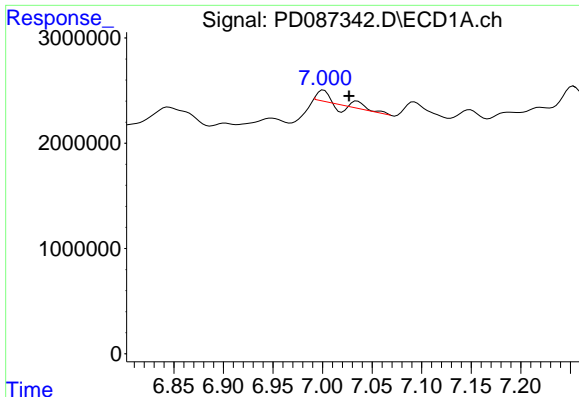
R.T.: 6.697 min  
 Delta R.T.: -0.013 min  
 Response: 762669  
 Conc: 0.29 ng/ml



#16 4,4'-DDD

R.T.: 5.931 min  
 Delta R.T.: -0.006 min  
 Response: 2891763  
 Conc: 0.24 ng/ml

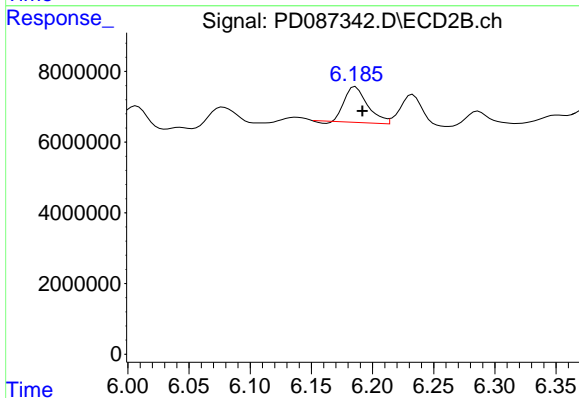




#17 4,4'-DDT

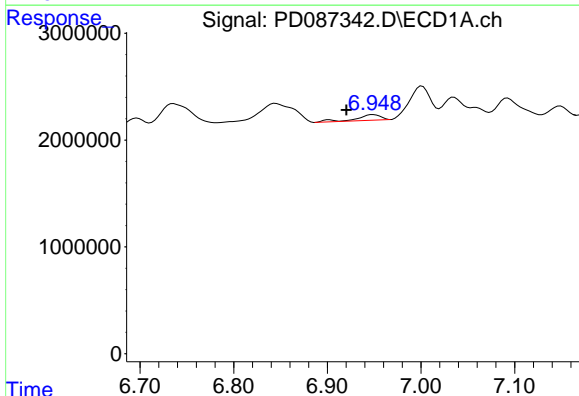
R.T.: 7.035 min  
 Delta R.T.: 0.009 min  
 Response: 876817  
 Conc: 0.33 ng/ml

Instrument :  
 ECD\_D  
 ClientSampleId :  
 E28Z7



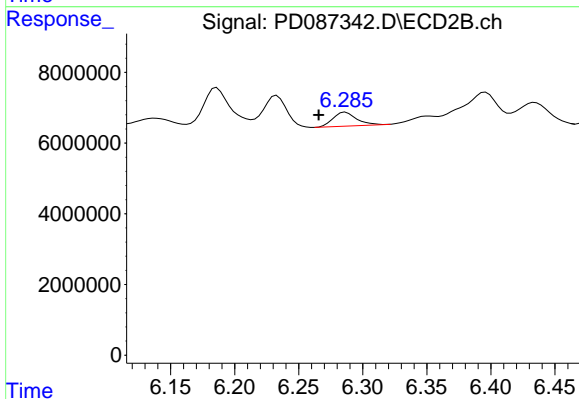
#17 4,4'-DDT

R.T.: 6.186 min  
 Delta R.T.: -0.005 min  
 Response: 13068551  
 Conc: 1.04 ng/ml



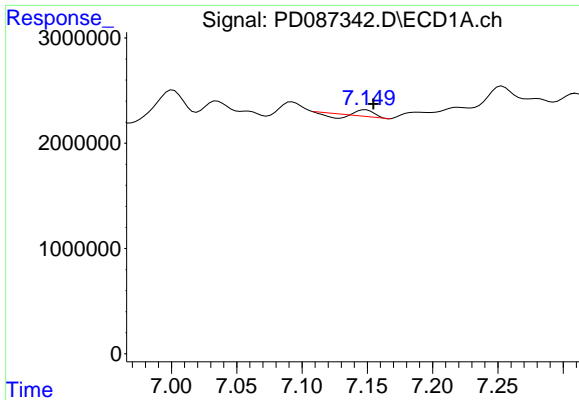
#18 Endrin aldehyde

R.T.: 6.949 min  
 Delta R.T.: 0.029 min  
 Response: 978767  
 Conc: 0.42 ng/ml



#18 Endrin aldehyde

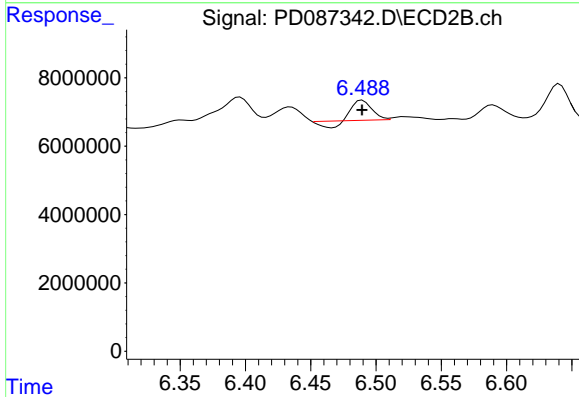
R.T.: 6.287 min  
 Delta R.T.: 0.021 min  
 Response: 4957998  
 Conc: 0.47 ng/ml



#19 Endosulfan Sulfate

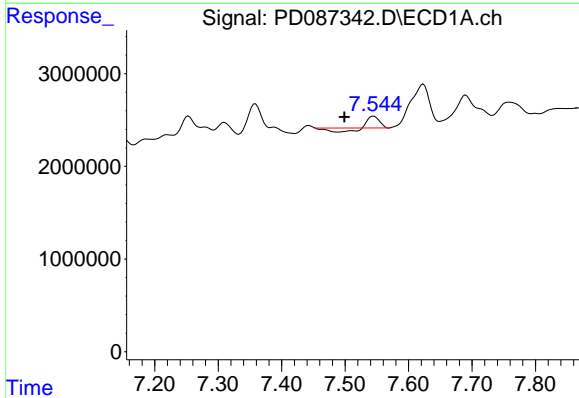
R.T.: 7.149 min  
 Delta R.T.: -0.006 min  
 Response: 174932  
 Conc: N.D.

Instrument :  
 ECD\_D  
 ClientSampleId :  
 E28Z7



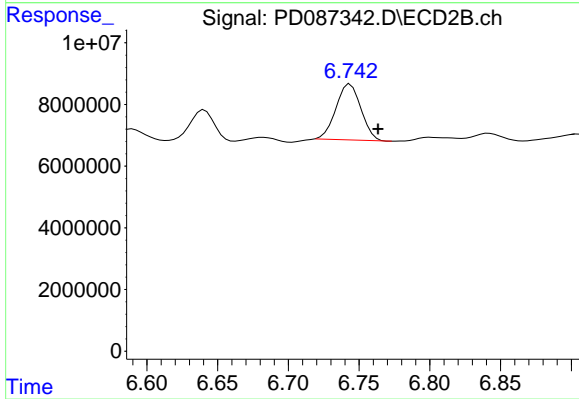
#19 Endosulfan Sulfate

R.T.: 6.490 min  
 Delta R.T.: 0.000 min  
 Response: 4557076  
 Conc: 0.34 ng/ml



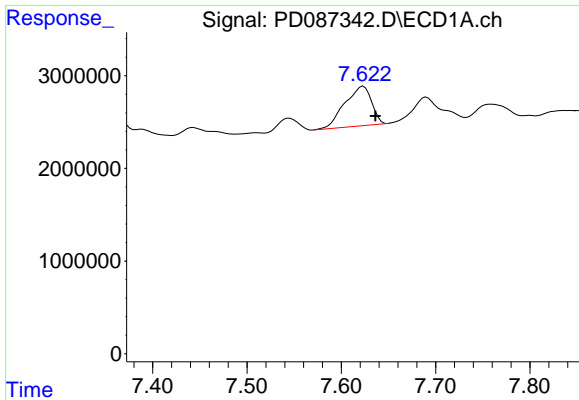
#20 Methoxychlor

R.T.: 7.545 min  
 Delta R.T.: 0.046 min  
 Response: 584314  
 Conc: 0.39 ng/ml



#20 Methoxychlor

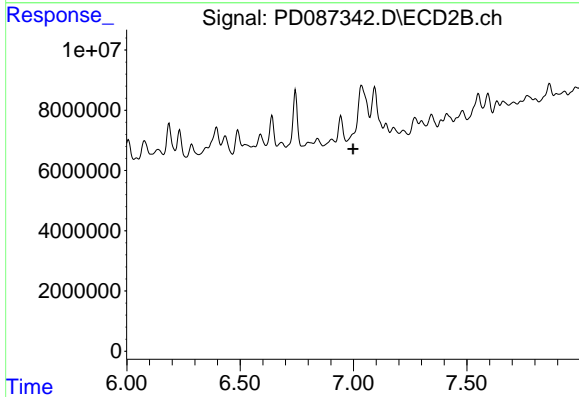
R.T.: 6.744 min  
 Delta R.T.: -0.020 min  
 Response: 22333668  
 Conc: 3.83 ng/ml



#21 Endrin ketone

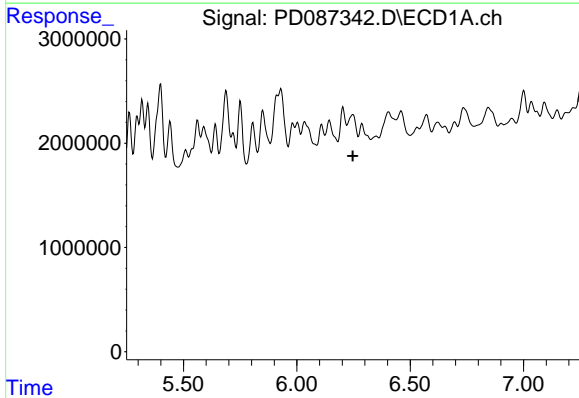
R.T.: 7.623 min  
 Delta R.T.: -0.013 min  
 Response: 8431382  
 Conc: 2.63 ng/ml

Instrument :  
 ECD\_D  
 ClientSampleId :  
 E28Z7



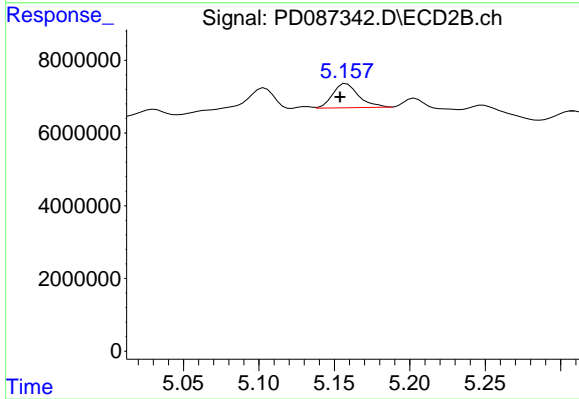
#21 Endrin ketone

R.T.: 7.035 min  
 Delta R.T.: 0.037 min  
 Response: -12624011  
 Conc: N.D.



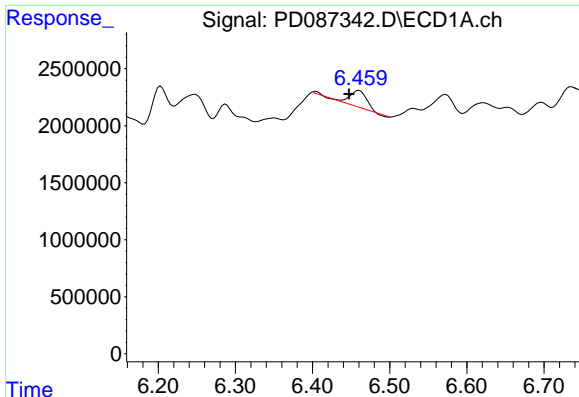
#22 Toxaphene-1

R.T.: 6.288 min  
 Delta R.T.: 0.040 min  
 Response: -1533041  
 Conc: N.D.



#22 Toxaphene-1

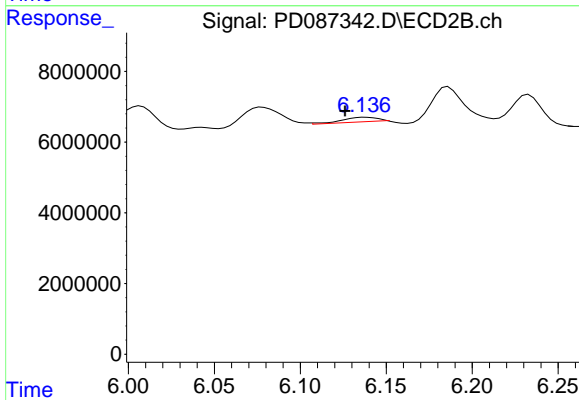
R.T.: 5.158 min  
 Delta R.T.: 0.004 min  
 Response: 7918162  
 Conc: 98.09 ng/ml



#23 Toxaphene-2

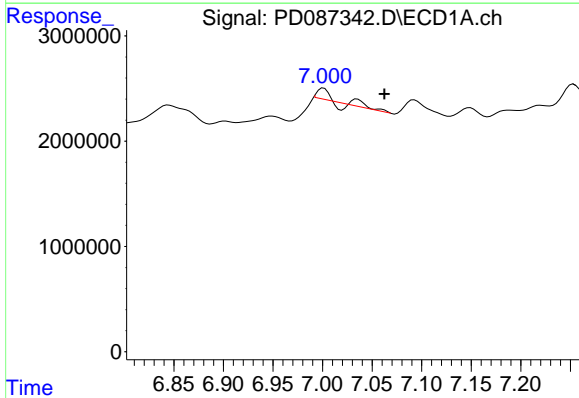
R.T.: 6.460 min  
 Delta R.T.: 0.012 min  
 Response: 2491131  
 Conc: 80.05 ng/ml

Instrument :  
 ECD\_D  
 ClientSampleId :  
 E28Z7



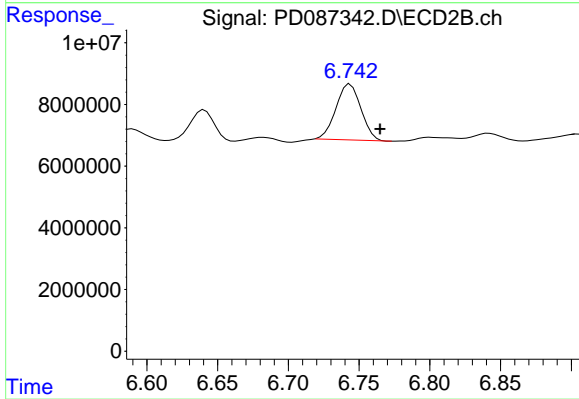
#23 Toxaphene-2

R.T.: 6.138 min  
 Delta R.T.: 0.012 min  
 Response: 2001035  
 Conc: 22.61 ng/ml



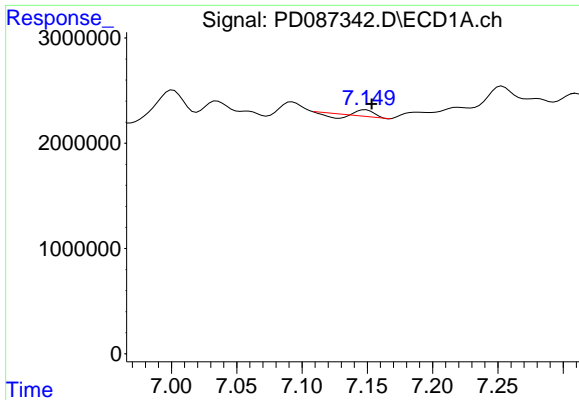
#24 Toxaphene-3

R.T.: 7.035 min  
 Delta R.T.: -0.027 min  
 Response: 876817  
 Conc: 10.15 ng/ml



#24 Toxaphene-3

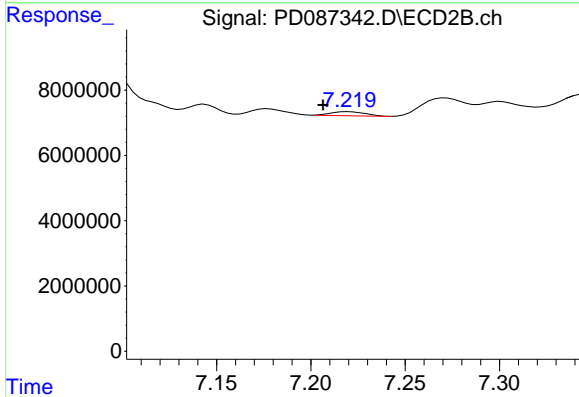
R.T.: 6.744 min  
 Delta R.T.: -0.021 min  
 Response: 22333668  
 Conc: 78.34 ng/ml



#25 Toxaphene-4

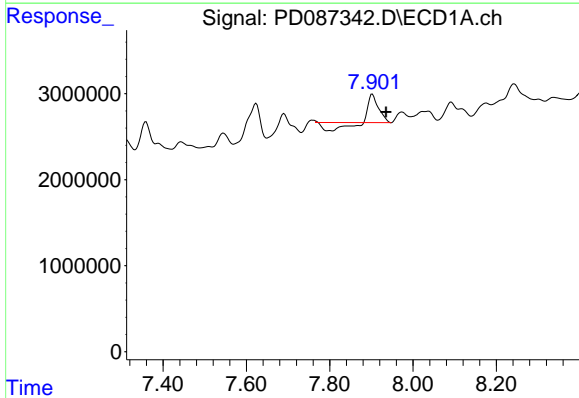
R.T.: 7.149 min  
 Delta R.T.: -0.005 min  
 Response: 174932  
 Conc: 2.71 ng/ml

Instrument :  
 ECD\_D  
 ClientSampleId :  
 E28Z7



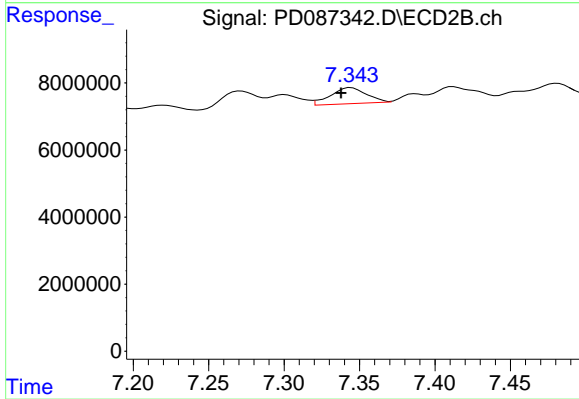
#25 Toxaphene-4

R.T.: 7.220 min  
 Delta R.T.: 0.014 min  
 Response: 1537264  
 Conc: 7.69 ng/ml



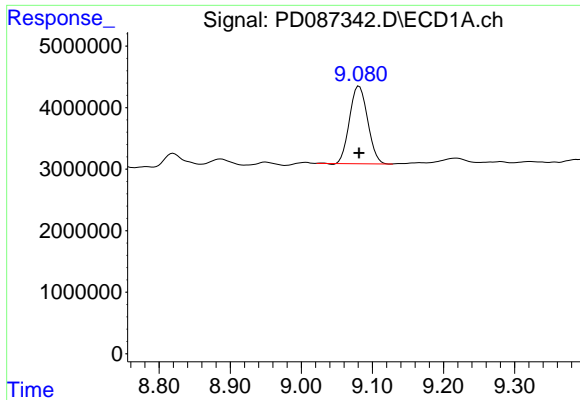
#26 Toxaphene-5

R.T.: 7.903 min  
 Delta R.T.: -0.032 min  
 Response: 2495338  
 Conc: 53.32 ng/ml



#26 Toxaphene-5

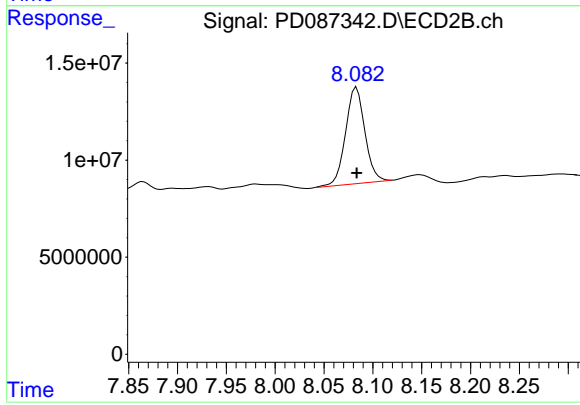
R.T.: 7.344 min  
 Delta R.T.: 0.007 min  
 Response: 7864489  
 Conc: 52.95 ng/ml



#27 Decachlorobiphenyl

R.T.: 9.081 min  
Delta R.T.: 0.000 min  
Response: 22351250  
Conc: 7.32 ng/ml

Instrument :  
ECD\_D  
ClientSampleId :  
E28Z7



#27 Decachlorobiphenyl

R.T.: 8.083 min  
Delta R.T.: 0.000 min  
Response: 68159056  
Conc: 5.17 ng/ml