

Data Path : Z:\pestpcbsrv\HPCHEM1\ECD\_D\Data\PD122718\  
 Data File : PD050870.D  
 Signal(s) : Signal #1: ECD1A.CH Signal #2: ECD2B.CH  
 Acq On : 27 Dec 2018 10:58  
 Operator : AJ\SJ  
 Sample : PEM19  
 Misc :  
 ALS Vial : 3 Sample Multiplier: 1

**Instrument :**  
 ECD\_D  
**LabSampleId :**  
 PEM19

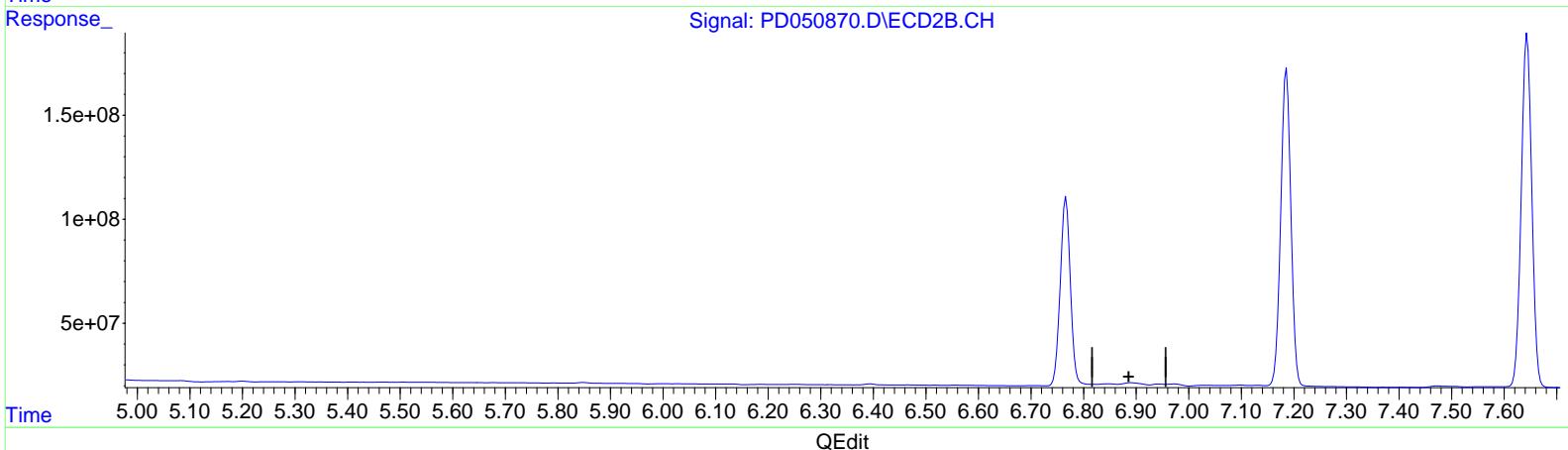
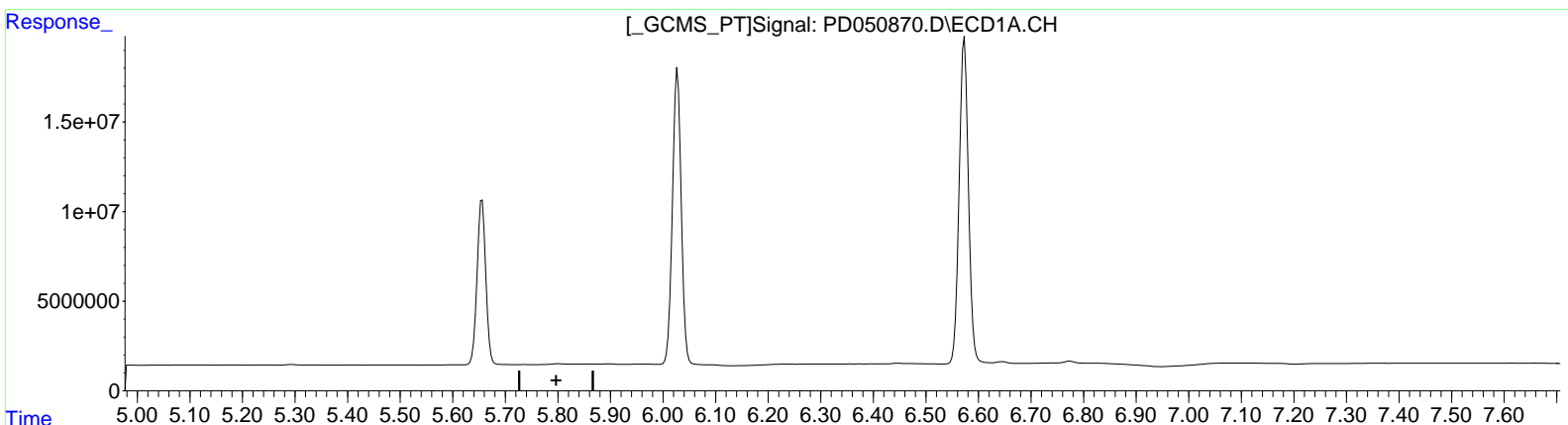
**Manual Integrations**  
**APPROVED**

Integration File signal 1: autoint1.e  
 Integration File signal 2: autoint2.e  
 Quant Time: Jan 07 02:27:23 2019  
 Quant Method : Z:\pestpcbsrv\HPCHEM1\ECD\_D\Method\PD122718CLP.M  
 Quant Title : GC Extractables  
 QLast Update : Thu Jan 03 08:35:31 2019  
 Response via : Initial Calibration  
 Integrator: ChemStation 6890 Scale Mode: Large solvent peaks clipped

Sonil

12/28/2018 10:25:12 AM

Volume Inj. : 1 µl  
 Signal #1 Phase : ZB-MR2 Signal #2 Phase: ZB-MR1  
 Signal #1 Info : 30M x 0.32mm x 0.2 Signal #2 Info : 30M x 0.32mm x 0.50µm



(16) 4,4'-DDD (A)  
 0.000min 0.000 ng/ml  
 response 0

(16) 4,4'-DDD #2 (A)  
 0.000min 0.000 ng/ml  
 response 0

Data Path : Z:\pestpcbsrv\HPCHEM1\ECD\_D\Data\PD122718\  
 Data File : PD050870.D  
 Signal(s) : Signal #1: ECD1A.CH Signal #2: ECD2B.CH  
 Acq On : 27 Dec 2018 10:58  
 Operator : AJ\SJ  
 Sample : PEM19  
 Misc :  
 ALS Vial : 3 Sample Multiplier: 1

**Instrument :**  
 ECD\_D  
**LabSampleId :**  
 PEM19

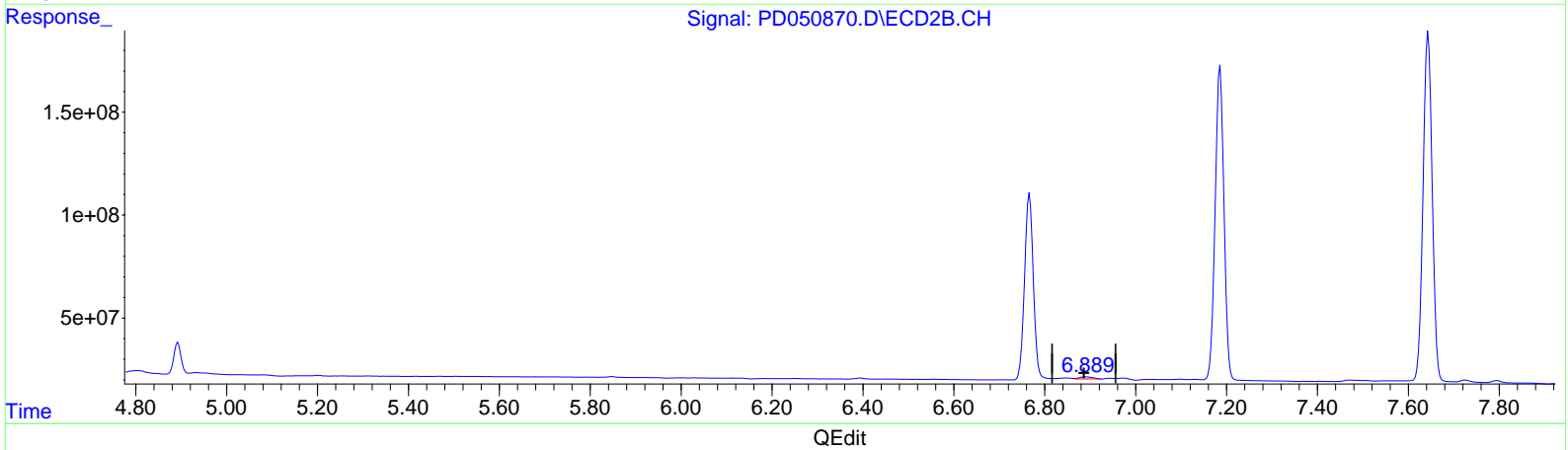
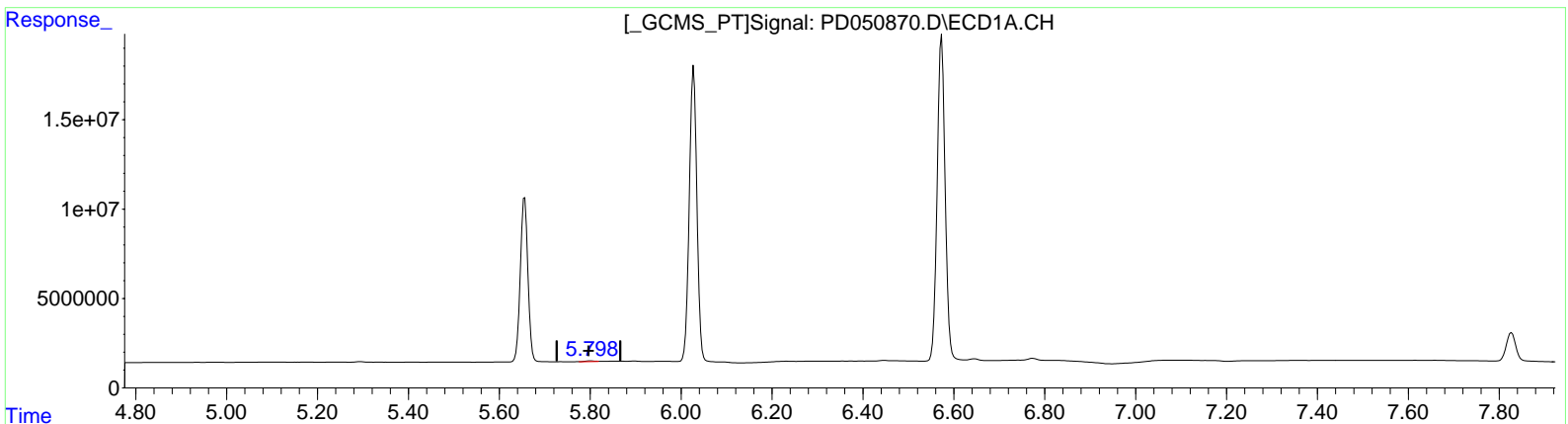
**Manual Integrations**  
**APPROVED**

Integration File signal 1: autoint1.e  
 Integration File signal 2: autoint2.e  
 Quant Time: Dec 27 14:52:04 2018  
 Quant Method : Z:\pestpcbsrv\HPCHEM1\ECD\_D\Method\PD122718CLP.M  
 Quant Title : GC Extractables  
 QLast Update : Thu Dec 27 14:51:02 2018  
 Response via : Initial Calibration  
 Integrator: ChemStation 6890 Scale Mode: Large solvent peaks clipped

Sonil

12/28/2018 10:25:12 AM

Volume Inj. : 1 µl  
 Signal #1 Phase : ZB-MR2 Signal #2 Phase: ZB-MR1  
 Signal #1 Info : 30M x 0.32mm x 0.2 Signal #2 Info : 30M x 0.32mm x 0.50µm



(16) 4,4'-DDD (A)  
 5.798min 0.356 ng/ml m  
 response 616703

(16) 4,4'-DDD #2 (A)  
 6.889min 0.901 ng/ml m  
 response 20628234

Data Path : Z:\pestpcbsrv\HPCHEM1\ECD\_D\Data\PD122718\  
 Data File : PD050870.D  
 Signal(s) : Signal #1: ECD1A.CH Signal #2: ECD2B.CH  
 Acq On : 27 Dec 2018 10:58  
 Operator : AJ\SJ  
 Sample : PEM19  
 Misc :  
 ALS Vial : 3 Sample Multiplier: 1

**Instrument :**  
 ECD\_D  
**LabSampleId :**  
 PEM19

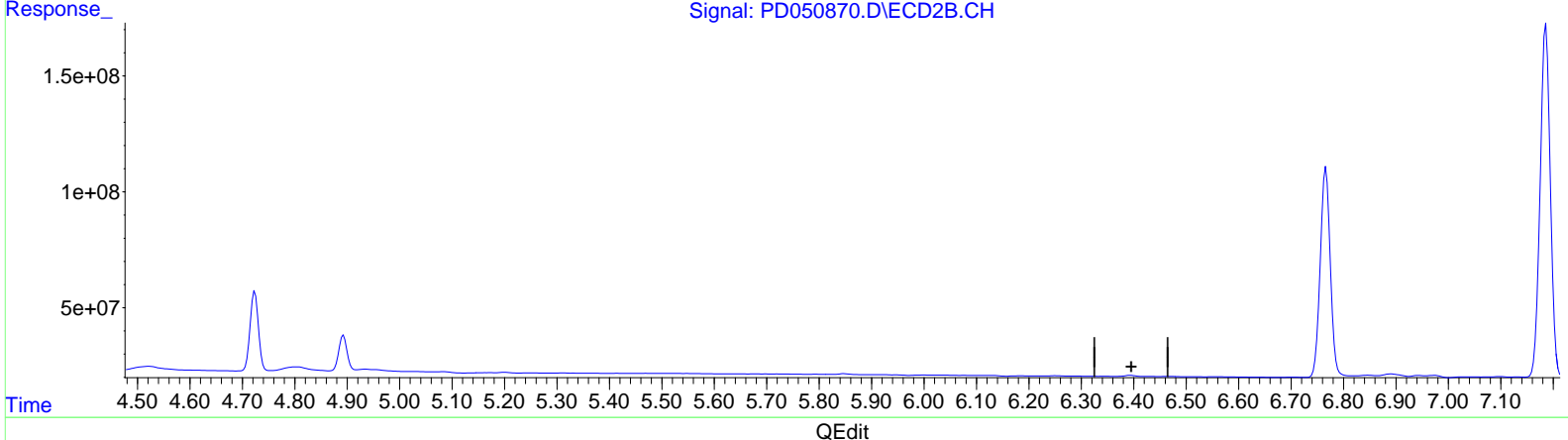
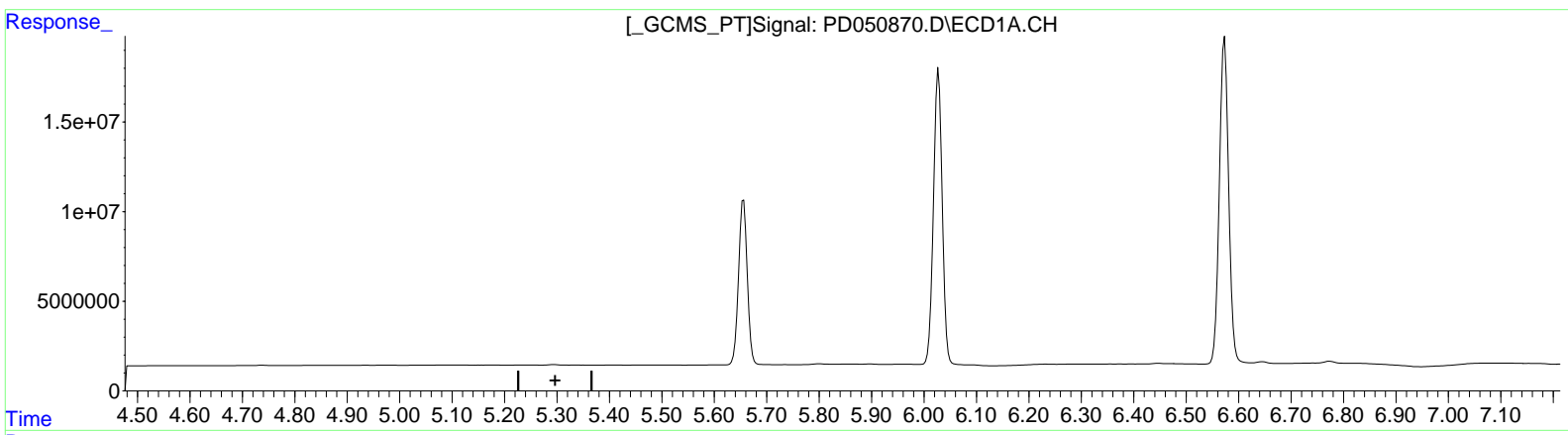
**Manual Integrations**  
**APPROVED**

Integration File signal 1: autoint1.e  
 Integration File signal 2: autoint2.e  
 Quant Time: Jan 07 02:27:23 2019  
 Quant Method : Z:\pestpcbsrv\HPCHEM1\ECD\_D\Method\PD122718CLP.M  
 Quant Title : GC Extractables  
 QLast Update : Thu Jan 03 08:35:31 2019  
 Response via : Initial Calibration  
 Integrator: ChemStation 6890 Scale Mode: Large solvent peaks clipped

Sonll

12/28/2018 10:25:12 AM

Volume Inj. : 1 µl  
 Signal #1 Phase : ZB-MR2 Signal #2 Phase: ZB-MR1  
 Signal #1 Info : 30M x 0.32mm x 0.2 Signal #2 Info : 30M x 0.32mm x 0.50µm



(12) 4,4'-DDE (B)  
 0.000min 0.000 ng/ml  
 response 0

(12) 4,4'-DDE #2 (B)  
 0.000min 0.000 ng/ml  
 response 0

Data Path : Z:\pestpcbsrv\HPCHEM1\ECD\_D\Data\PD122718\  
 Data File : PD050870.D  
 Signal(s) : Signal #1: ECD1A.CH Signal #2: ECD2B.CH  
 Acq On : 27 Dec 2018 10:58  
 Operator : AJ\SJ  
 Sample : PEM19  
 Misc :  
 ALS Vial : 3 Sample Multiplier: 1

**Instrument :**  
 ECD\_D  
**LabSampleId :**  
 PEM19

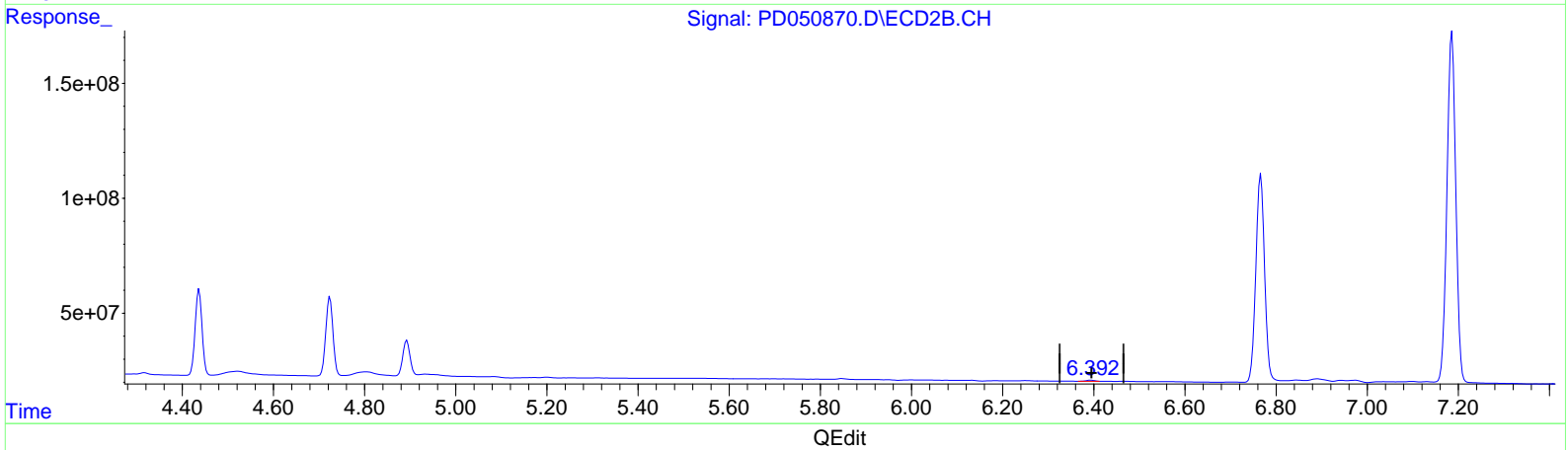
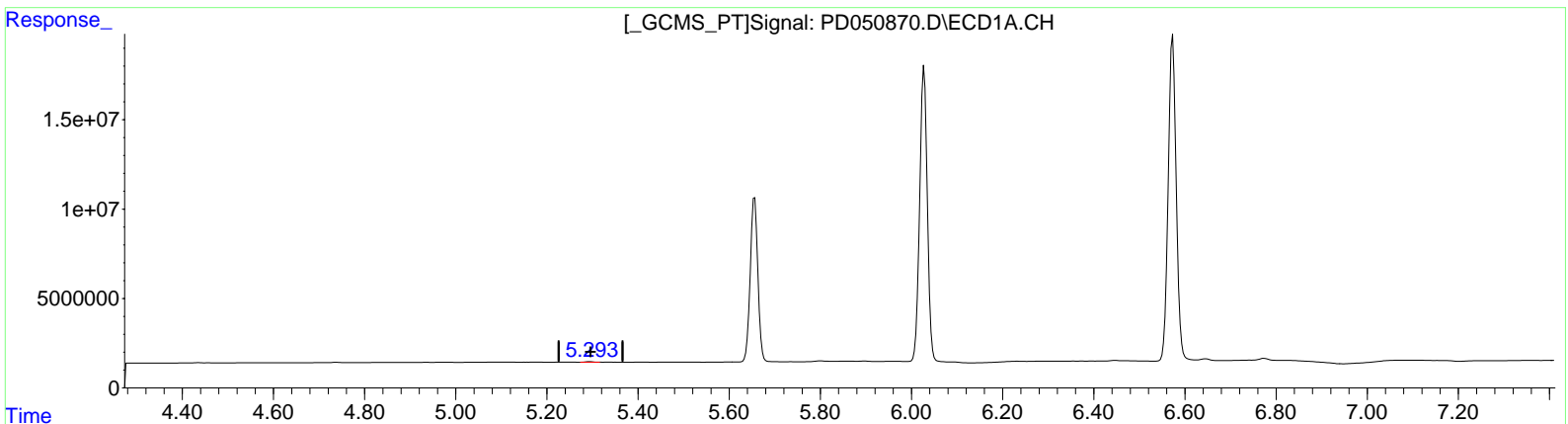
**Manual Integrations**  
**APPROVED**

Integration File signal 1: autoint1.e  
 Integration File signal 2: autoint2.e  
 Quant Time: Dec 27 14:52:04 2018  
 Quant Method : Z:\pestpcbsrv\HPCHEM1\ECD\_D\Method\PD122718CLP.M  
 Quant Title : GC Extractables  
 QLast Update : Thu Dec 27 14:51:02 2018  
 Response via : Initial Calibration  
 Integrator: ChemStation 6890 Scale Mode: Large solvent peaks clipped

Sonil

12/28/2018 10:25:12 AM

Volume Inj. : 1 µl  
 Signal #1 Phase : ZB-MR2 Signal #2 Phase: ZB-MR1  
 Signal #1 Info : 30M x 0.32mm x 0.2 Signal #2 Info : 30M x 0.32mm x 0.50µm



(12) 4,4'-DDE (B)  
 5.293min 0.181 ng/ml m  
 response 372054

(12) 4,4'-DDE #2 (B)  
 6.392min 0.205 ng/ml m  
 response 5606001

Data Path : Z:\pestpcbsrv\HPCHEM1\ECD\_D\Data\PD122718\  
Data File : PD050870.D  
Signal(s) : Signal #1: ECD1A.CH Signal #2: ECD2B.CH  
Acq On : 27 Dec 2018 10:58  
Operator : AJ\SJ  
Sample : PEM19  
Misc :  
ALS Vial : 3 Sample Multiplier: 1

Instrument :  
ECD\_D  
LabSampleId :  
PEM19

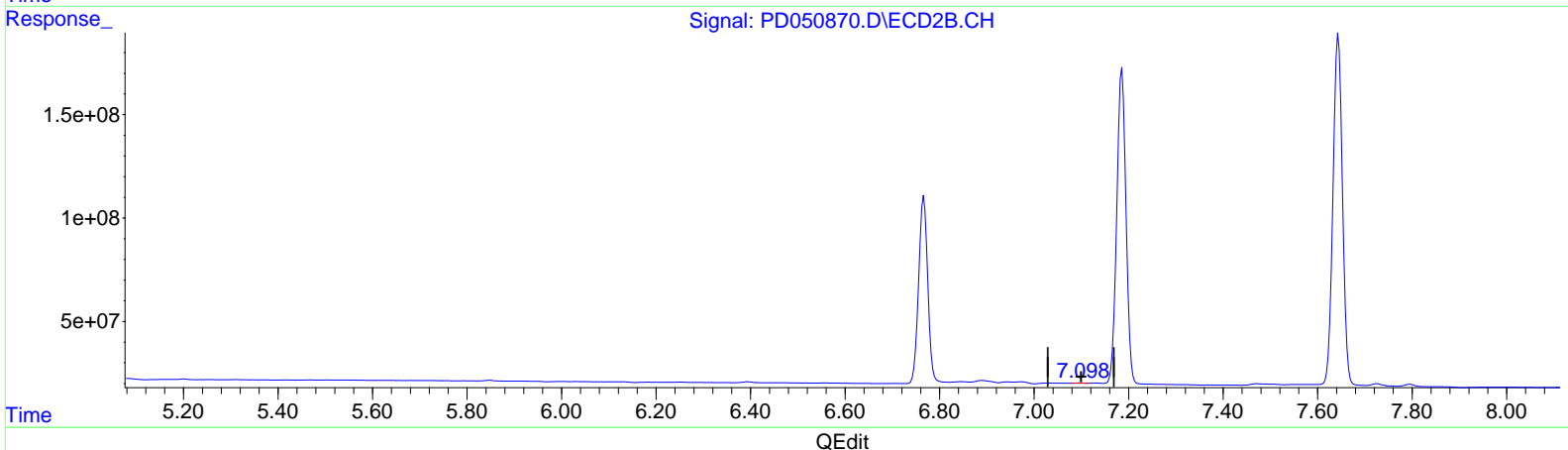
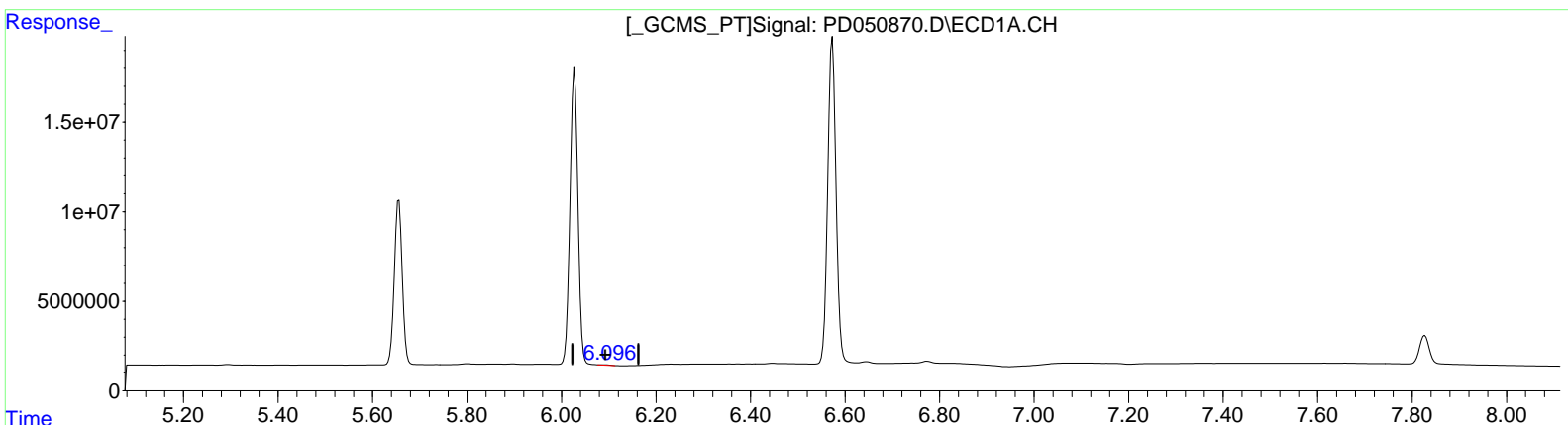
Manual Integrations  
APPROVED

Integration File signal 1: autoint1.e  
Integration File signal 2: autoint2.e  
Quant Time: Dec 27 14:52:04 2018  
Quant Method : Z:\pestpcbsrv\HPCHEM1\ECD\_D\Method\PD122718CLP.M  
Quant Title : GC Extractables  
QLast Update : Thu Dec 27 14:51:02 2018  
Response via : Initial Calibration  
Integrator: ChemStation 6890 Scale Mode: Large solvent peaks clipped

SonH

12/28/2018 10:25:12 AM

Volume Inj. : 1 µl  
Signal #1 Phase : ZB-MR2 Signal #2 Phase: ZB-MR1  
Signal #1 Info : 30M x 0.32mm x0.2 Signal #2 Info : 30M x 0.32mm x 0.50µm



(18) Endrin aldehyde (B)  
6.096min 0.160 ng/ml m  
response 240760

(18) Endrin aldehyde #2 (B)  
7.098min 0.122 ng/ml m  
response 2367987

Data Path : Z:\pestpcbsrv\HPCHEM1\ECD\_D\Data\PD122718\  
Data File : PD050870.D  
Signal(s) : Signal #1: ECD1A.CH Signal #2: ECD2B.CH  
Acq On : 27 Dec 2018 10:58  
Operator : AJ\SJ  
Sample : PEM19  
Misc :  
ALS Vial : 3 Sample Multiplier: 1

Instrument :  
ECD\_D  
LabSampleId :  
PEM19

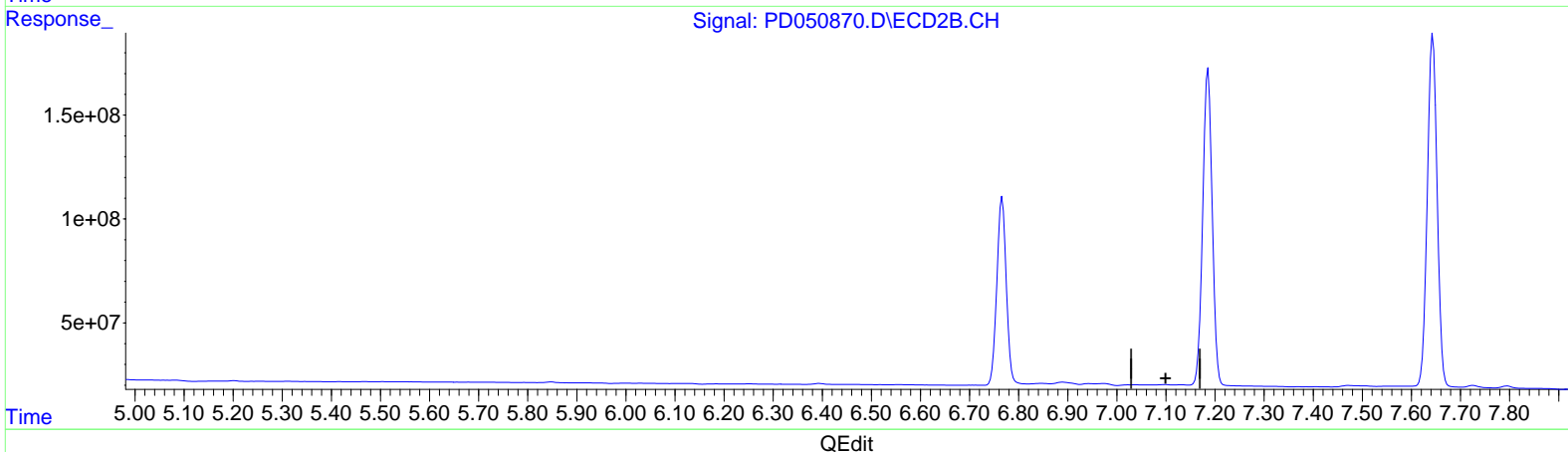
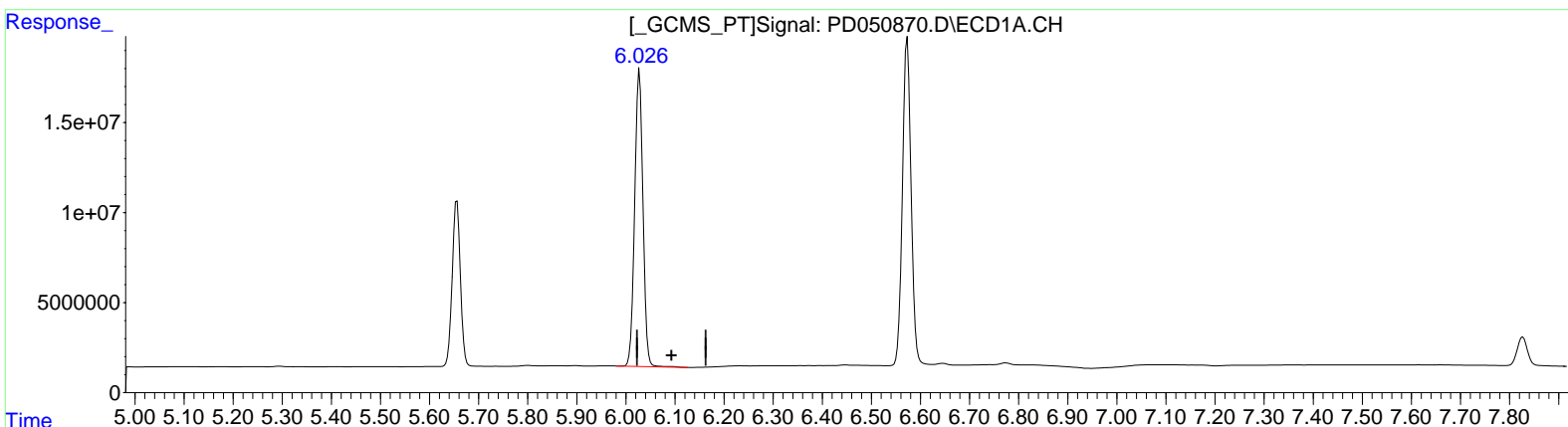
Manual Integrations  
APPROVED

Integration File signal 1: autoint1.e  
Integration File signal 2: autoint2.e  
Quant Time: Jan 07 02:27:23 2019  
Quant Method : Z:\pestpcbsrv\HPCHEM1\ECD\_D\Method\PD122718CLP.M  
Quant Title : GC Extractables  
QLast Update : Thu Jan 03 08:35:31 2019  
Response via : Initial Calibration  
Integrator: ChemStation 6890 Scale Mode: Large solvent peaks clipped

Sohil

12/28/2018 10:25:12 AM

Volume Inj. : 1 µl  
Signal #1 Phase : ZB-MR2 Signal #2 Phase: ZB-MR1  
Signal #1 Info : 30M x 0.32mm x 0.2 Signal #2 Info : 30M x 0.32mm x 0.50µm



(18) Endrin aldehyde (B)  
6.028min 128.873 ng/ml  
response 193519582

(18) Endrin aldehyde #2 (B)  
0.000min 0.000 ng/ml  
response 0

Data Path : Z:\pestpcbsrv\HPCHEM1\ECD\_D\Data\PD122718\  
 Data File : PD050870.D  
 Signal(s) : Signal #1: ECD1A.CH Signal #2: ECD2B.CH  
 Acq On : 27 Dec 2018 10:58  
 Operator : AJ\SJ  
 Sample : PEM19  
 Misc :  
 ALS Vial : 3 Sample Multiplier: 1

Instrument :  
 ECD\_D  
 LabSampleId :  
 PEM19

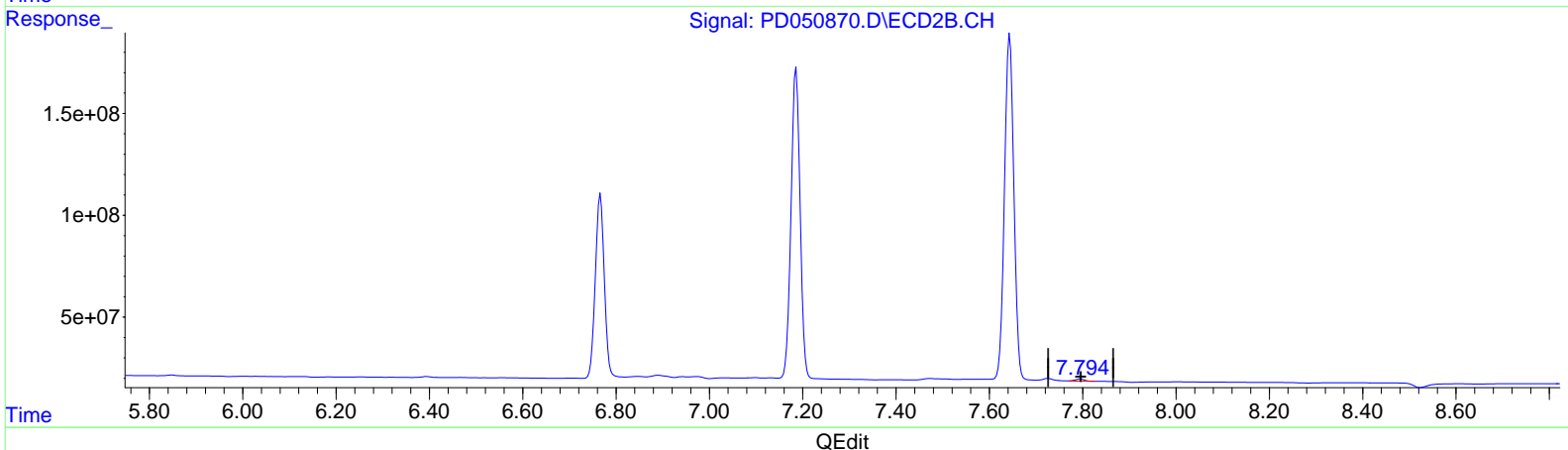
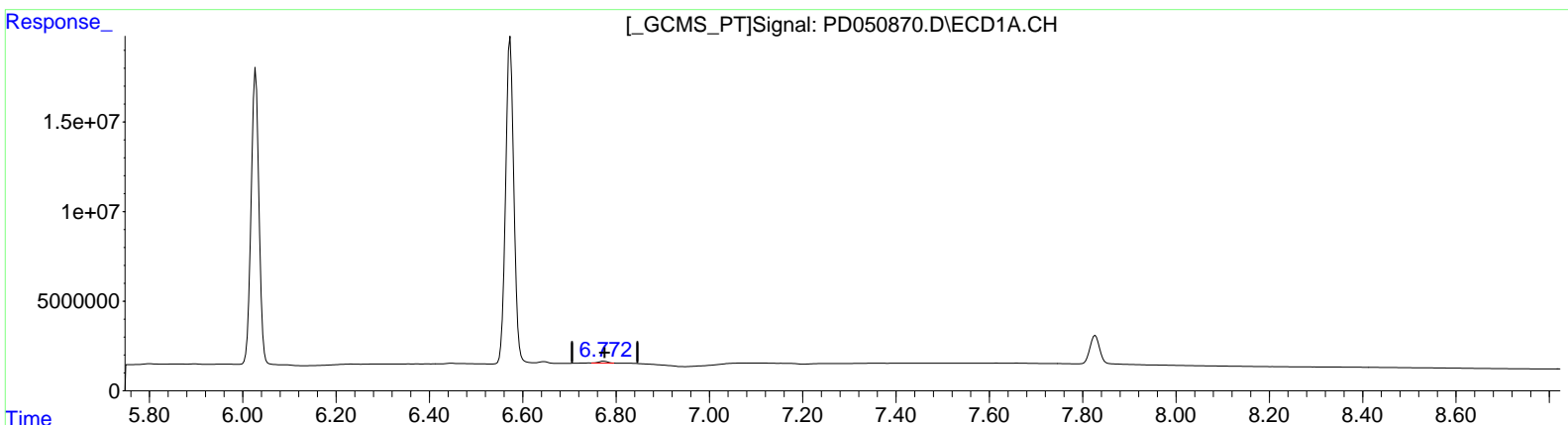
Manual Integrations  
**APPROVED**

Integration File signal 1: autoint1.e  
 Integration File signal 2: autoint2.e  
 Quant Time: Dec 27 14:52:04 2018  
 Quant Method : Z:\pestpcbsrv\HPCHEM1\ECD\_D\Method\PD122718CLP.M  
 Quant Title : GC Extractables  
 QLast Update : Thu Dec 27 14:51:02 2018  
 Response via : Initial Calibration  
 Integrator: ChemStation 6890 Scale Mode: Large solvent peaks clipped

Sonll

12/28/2018 10:25:12 AM

Volume Inj. : 1 µl  
 Signal #1 Phase : ZB-MR2 Signal #2 Phase: ZB-MR1  
 Signal #1 Info : 30M x 0.32mm x 0.2 Signal #2 Info : 30M x 0.32mm x 0.50µm



(21) Endrin ketone (B)  
 6.772min 0.775 ng/ml m  
 response 1429388

(21) Endrin ketone #2 (B)  
 7.794min 0.656 ng/ml m  
 response 13919770

Data Path : Z:\pestpcbsrv\HPCHEM1\ECD\_D\Data\PD122718\  
 Data File : PD050870.D  
 Signal(s) : Signal #1: ECD1A.CH Signal #2: ECD2B.CH  
 Acq On : 27 Dec 2018 10:58  
 Operator : AJ\SJ  
 Sample : PEM19  
 Misc :  
 ALS Vial : 3 Sample Multiplier: 1

Instrument :  
 ECD\_D  
 LabSampleId :  
 PEM19

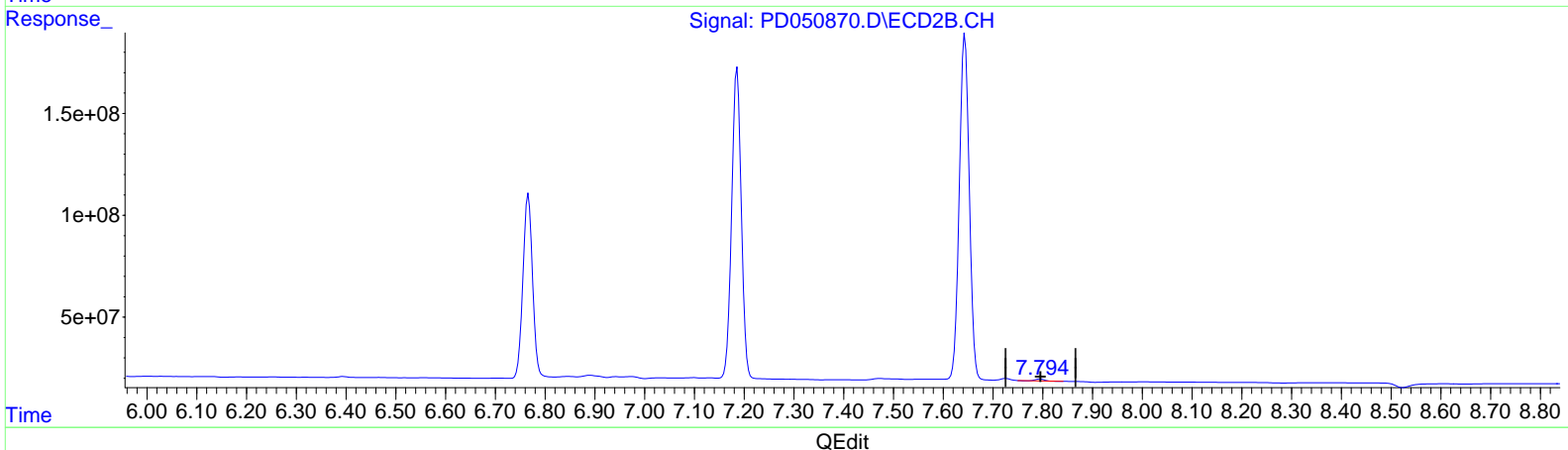
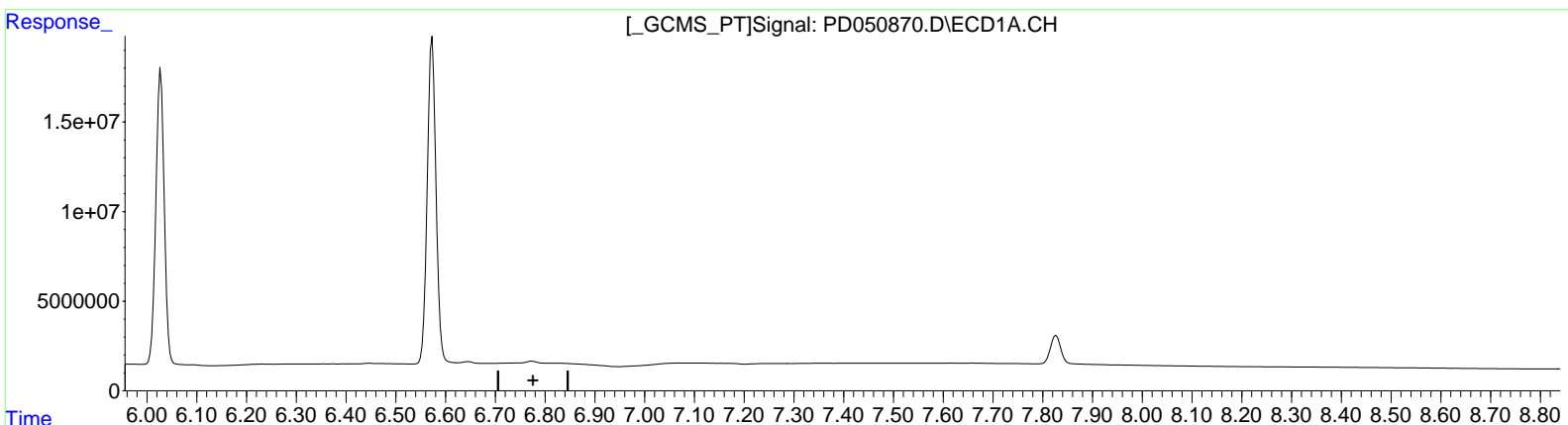
Manual Integrations  
**APPROVED**

Integration File signal 1: autoint1.e  
 Integration File signal 2: autoint2.e  
 Quant Time: Jan 07 02:27:23 2019  
 Quant Method : Z:\pestpcbsrv\HPCHEM1\ECD\_D\Method\PD122718CLP.M  
 Quant Title : GC Extractables  
 QLast Update : Thu Jan 03 08:35:31 2019  
 Response via : Initial Calibration  
 Integrator: ChemStation 6890 Scale Mode: Large solvent peaks clipped

Sonil

12/28/2018 10:25:12 AM

Volume Inj. : 1 µl  
 Signal #1 Phase : ZB-MR2 Signal #2 Phase: ZB-MR1  
 Signal #1 Info : 30M x 0.32mm x 0.2 Signal #2 Info : 30M x 0.32mm x 0.50µm



(21) Endrin ketone (B)  
 0.000min 0.000 ng/ml  
 response 0

(21) Endrin ketone #2 (B)  
 7.795min 0.484 ng/ml  
 response 10266712



Data Path : Z:\pestpcbsrv\HPCHEM1\ECD\_D\Data\PD122718\  
 Data File : PD050870.D  
 Signal(s) : Signal #1: ECD1A.CH Signal #2: ECD2B.CH  
 Acq On : 27 Dec 2018 10:58  
 Operator : AJ\SJ  
 Sample : PEM19  
 Misc :  
 ALS Vial : 3 Sample Multiplier: 1

Instrument :  
 ECD\_D  
 LabSampleId :  
 PEM19

Integration File signal 1: autoint1.e  
 Integration File signal 2: autoint2.e  
 Quant Time: Dec 27 14:52:04 2018  
 Quant Method : Z:\pestpcbsrv\HPCHEM1\ECD\_D\Method\PD122718CLP.M  
 Quant Title : GC Extractables  
 QLast Update : Thu Dec 27 14:51:02 2018  
 Response via : Initial Calibration  
 Integrator: ChemStation 6890 Scale Mode: Large solvent peaks clipped

Manual Integrations  
 APPROVED

Sonil

12/28/2018 10:25:12 AM

Volume Inj. : 1 µl  
 Signal #1 Phase : ZB-MR2 Signal #2 Phase: ZB-MR1  
 Signal #1 Info : 30M x 0.32mm x0.2 Signal #2 Info : 30M x 0.32mm x 0.50µm

Compound	RT#1	RT#2	Resp#1	Resp#2	ng/ml	ng/ml
-----						
System Monitoring Compounds						
1) SA Tetrachlo...	3.226	4.045	28054411	511.1E6	18.185	18.955
27) SA Decachlor...	7.827	9.151	23075443	390.0E6	20.481	20.971
Target Compounds						
2) A alpha-BHC	3.646	4.437	19689161	395.6E6	8.394	9.737
3) MA gamma-BHC...	3.914	4.724	20134396	376.2E6	8.860	10.042
6) B beta-BHC	4.160	4.893	9316751	161.9E6	9.578	9.657
12) B 4,4'-DDE	5.293	6.392	372054	5606001	0.181m	0.205m
14) MA Endrin	5.656	6.767	106.3E6	1191.9E6	53.387	52.774
16) A 4,4'-DDD	5.798	6.889	616703	20628234	0.356m	0.901m#
17) MA 4,4'-DDT	6.028	7.186	193.5E6	2046.2E6	106.265	98.118
18) B Endrin a...	6.096	7.098	240760	2367987	0.160m	0.122m
20) A Methoxychlor	6.573	7.644	222.1E6	2367.8E6	245.251	243.779
21) B Endrin ke...	6.772	7.794	1429388	13919770	0.775m	0.656m

SJ  
 01/03/19

(f)=RT Delta > 1/2 Window (#)=Amounts differ by > 25% (m)=manual int.