

Data Path : Z:\pestpcbsrv\HPCHEM1\ECD\_D\Data\PD122722\  
 Data File : PD073507.D  
 Signal(s) : Signal #1: ECD1A.ch Signal #2: ECD2B.ch  
 Acq On : 27 Dec 2022 17:45  
 Operator : AR\AJ  
 Sample : PB149858BL  
 Misc :  
 ALS Vial : 24 Sample Multiplier: 1

Instrument :  
 ECD\_D  
 ClientSampleId :

Integration File signal 1: autoint1.e  
 Integration File signal 2: autoint2.e  
 Quant Time: Dec 28 08:34:34 2022  
 Quant Method : Z:\pestpcbsrv\HPCHEM1\ECD\_D\Method\PD122722CLP.M  
 Quant Title : GC Extractables  
 QLast Update : Wed Dec 28 03:07:05 2022  
 Response via : Initial Calibration  
 Integrator: ChemStation

Volume Inj. : 1 µl  
 Signal #1 Phase : ZB-MR2 Signal #2 Phase: ZB-MR1  
 Signal #1 Info : 30M x 0.32mm x0.2 Signal #2 Info : 30M x 0.32mm x 0.50µm

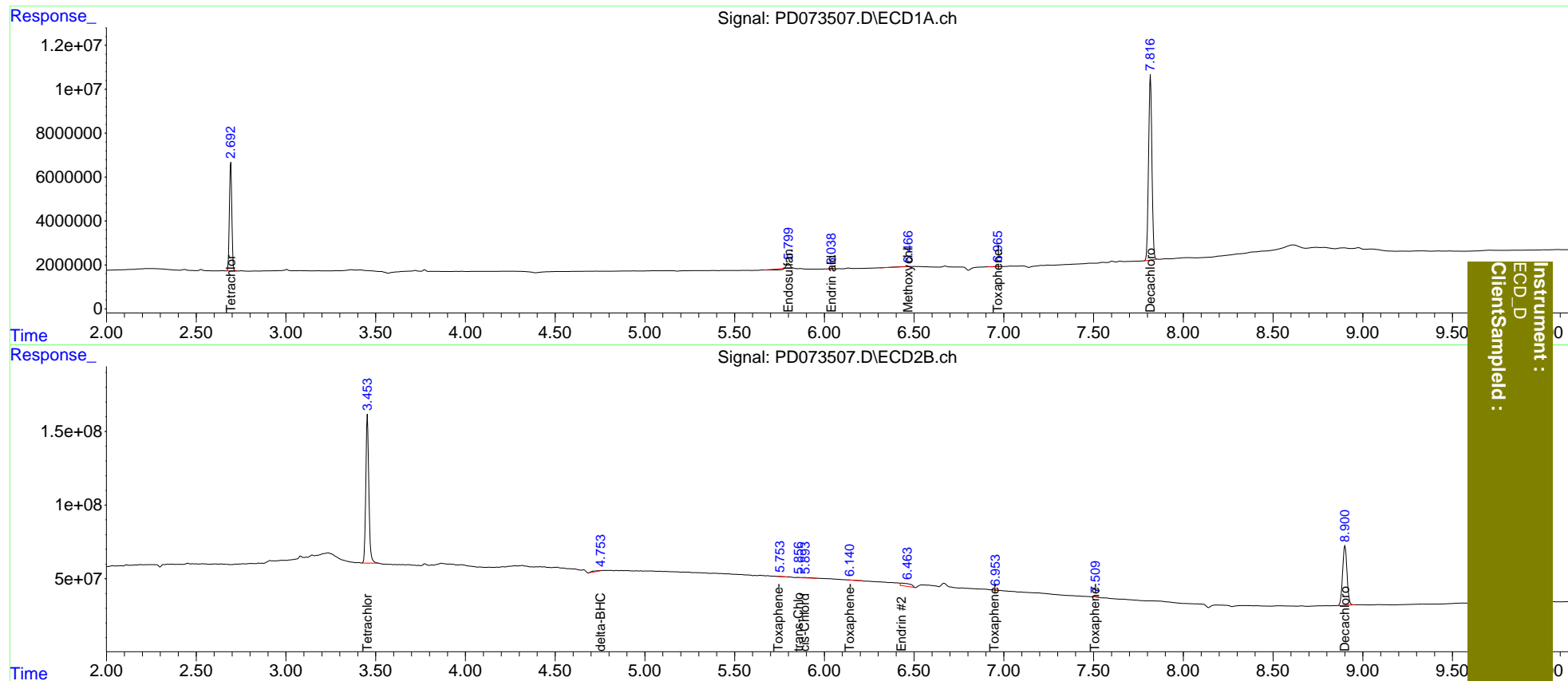
	Compound	RT#1	RT#2	Resp#1	Resp#2	ng/ml	ng/ml
-----							
System Monitoring Compounds							
1)	SA Tetrachlo...	2.693	3.454	46265599	1189.1E6	17.953	17.321
2)	SA Decachlor...	7.817	8.901	109.4E6	688.4E6	36.600	38.603
Target Compounds							
2)	A alpha-BHC	0.000	3.911	0	1031884	N.D.	<MDL
3)	MA gamma-BHC...	0.000	4.275	0	5412537	N.D.	<MDL
4)	MA Heptachlor	0.000	4.814	0	2067940	N.D.	<MDL
7)	B delta-BHC	0.000	4.755f	0	16837816	N.D.	0.329
8)	B Heptachlo...	0.000	5.567	0	2458615	N.D.	<MDL
9)	A Endosulfan I	0.000	5.970	0	802793	N.D.	<MDL
10)	B trans-Chl...	0.000	5.857	0	4996797	N.D.	0.135
11)	B cis-Chlor...	0.000	5.892	0	10116045	N.D.	0.269
13)	MA Dieldrin	0.000	6.238	0	1919954	N.D.	<MDL
14)	MA Endrin	0.000	6.431f	0	75943366	N.D.	2.556
15)	B Endosulfa...	5.800f	6.667f	1194860	-2239810	0.397	N.D. #
17)	MA 4,4'-DDT	0.000	6.933	0	563212	N.D.	<MDL
18)	B Endrin al...	6.038	6.838	448519	740854	0.178	<MDL #
19)	B Endosulfa...	6.194f	7.057	42397	-282866	<MDL	N.D. #
20)	A Methoxychlor	6.471f	7.423	371703	873121	0.249	<MDL #
21)	B Endrin ke...	0.000	7.563	0	1226739	N.D.	<MDL
22)	Toxaphene-1	0.000	5.744	0	2719302	N.D.	21.705
23)	Toxaphene-2	0.000	6.142	0	747930	N.D.	3.153
24)	Toxaphene-3	0.000	6.948	0	168322	N.D.	0.292
26)	Toxaphene-5	6.966	7.507	33499	3150608	0.580	10.166 #

(f)=RT Delta > 1/2 Window (#)=Amounts differ by > 25% (m)=manual int.

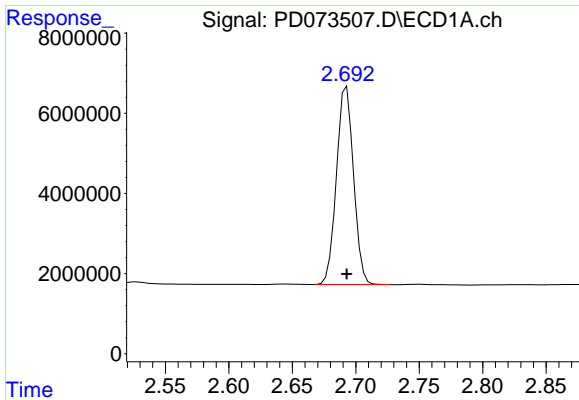
Data Path : Z:\pestpcbsrv\HPCHEM1\ECD\_D\Data\PD122722\  
 Data File : PD073507.D  
 Signal(s) : Signal #1: ECD1A.ch Signal #2: ECD2B.ch  
 Acq On : 27 Dec 2022 17:45  
 Operator : AR\AJ  
 Sample : PB149858BL  
 Misc :  
 ALS Vial : 24 Sample Multiplier: 1

Integration File signal 1: autoint1.e  
 Integration File signal 2: autoint2.e  
 Quant Time: Dec 28 08:34:34 2022  
 Quant Method : Z:\pestpcbsrv\HPCHEM1\ECD\_D\Method\PD122722CLP.M  
 Quant Title : GC Extractables  
 QLast Update : Wed Dec 28 03:07:05 2022  
 Response via : Initial Calibration  
 Integrator: ChemStation

Volume Inj. : 1 µl  
 Signal #1 Phase : ZB-MR2 Signal #2 Phase: ZB-MR1  
 Signal #1 Info : 30M x 0.32mm x0.2 Signal #2 Info : 30M x 0.32mm x 0.50µm

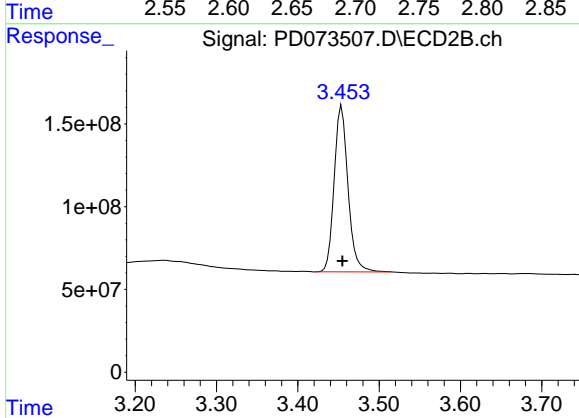


Instrument :  
 ECD\_D  
 ClientSampled :

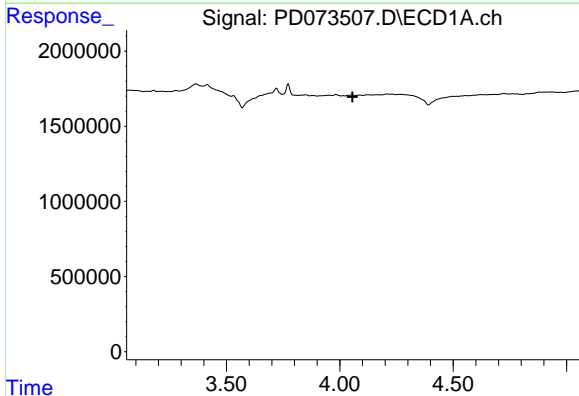


#1 Tetrachloro-m-xylene  
 R.T.: 2.693 min  
 Delta R.T.: 0.000 min  
 Response: 46265599  
 Conc: 17.95 ng/ml

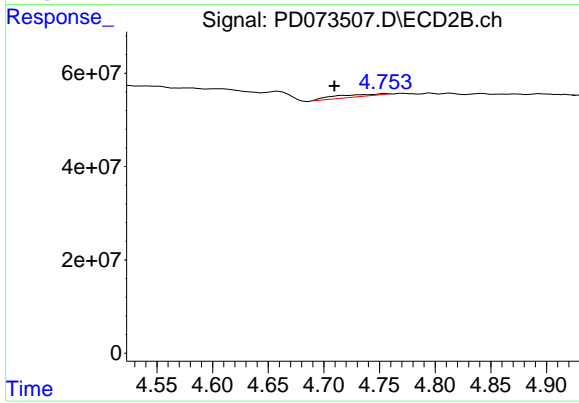
Instrument :  
 ECD\_D  
 ClientSampleId :



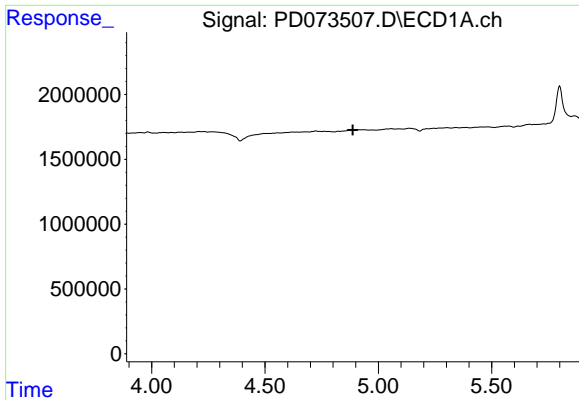
#1 Tetrachloro-m-xylene  
 R.T.: 3.454 min  
 Delta R.T.: 0.000 min  
 Response: 1189103540  
 Conc: 17.32 ng/ml



#7 delta-BHC  
 R.T.: 0.000 min  
 Exp R.T. : 4.056 min  
 Response: 0  
 Conc: N.D.



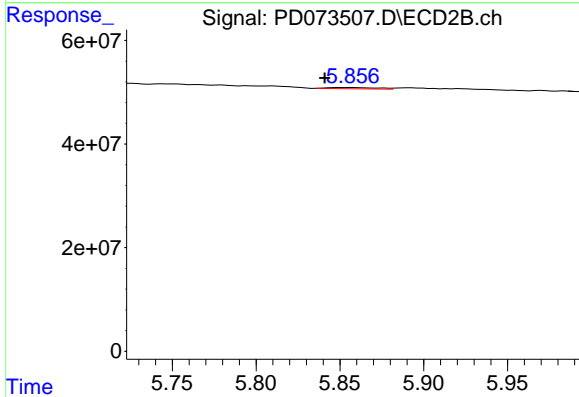
#7 delta-BHC  
 R.T.: 4.755 min  
 Delta R.T.: 0.046 min  
 Response: 16837816  
 Conc: 0.33 ng/ml



#10 trans-Chlordane

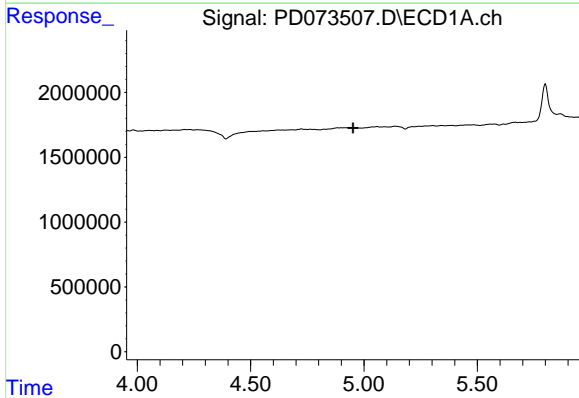
R.T.: 0.000 min  
 Exp R.T.: 4.888 min  
 Response: 0  
 Conc: N.D.

Instrument :  
 ECD\_D  
 ClientSampleId :



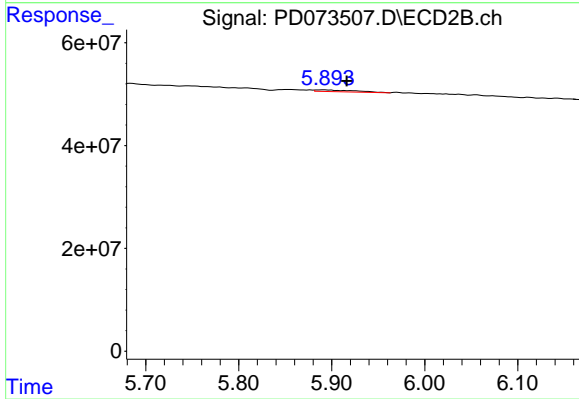
#10 trans-Chlordane

R.T.: 5.857 min  
 Delta R.T.: 0.016 min  
 Response: 4996797  
 Conc: 0.14 ng/ml



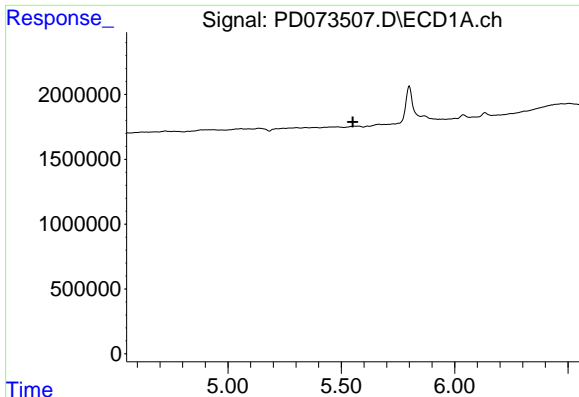
#11 cis-Chlordane

R.T.: 0.000 min  
 Exp R.T.: 4.952 min  
 Response: 0  
 Conc: N.D.



#11 cis-Chlordane

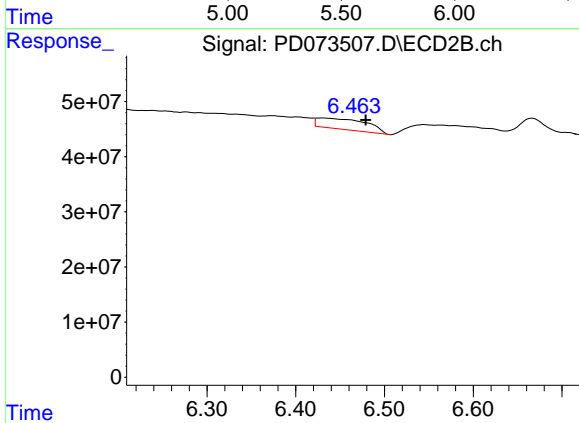
R.T.: 5.892 min  
 Delta R.T.: -0.024 min  
 Response: 10116045  
 Conc: 0.27 ng/ml



#14 Endrin

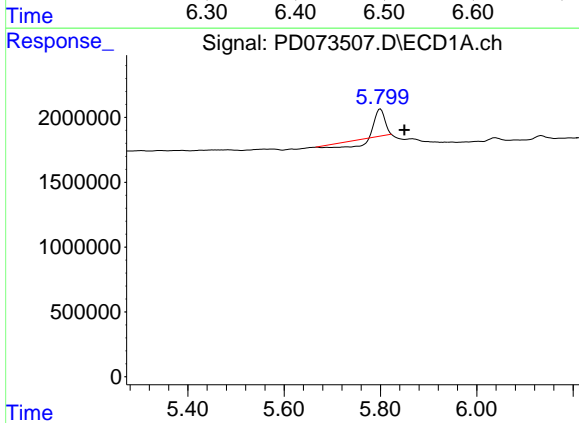
R.T.: 0.000 min  
 Exp R.T.: 5.551 min  
 Response: 0  
 Conc: N.D.

Instrument :  
 ECD\_D  
 ClientSampleId :



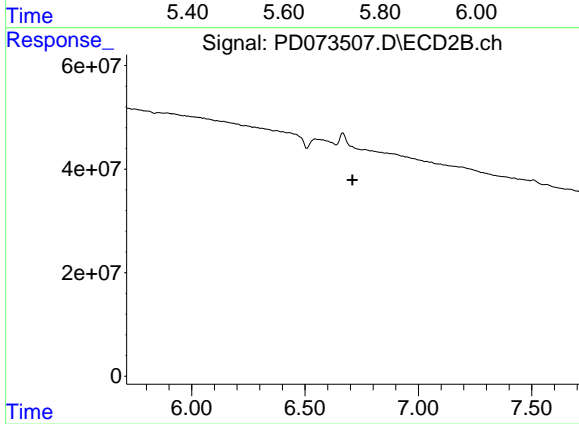
#14 Endrin

R.T.: 6.431 min  
 Delta R.T.: -0.048 min  
 Response: 75943366  
 Conc: 2.56 ng/ml



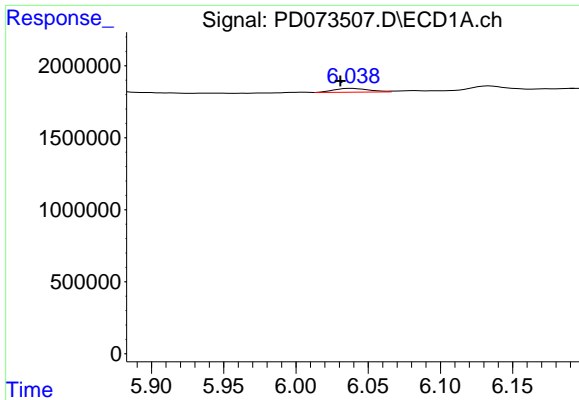
#15 Endosulfan II

R.T.: 5.800 min  
 Delta R.T.: -0.050 min  
 Response: 1194860  
 Conc: 0.40 ng/ml



#15 Endosulfan II

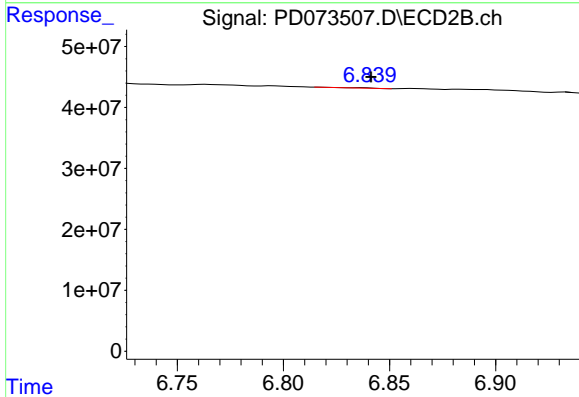
R.T.: 6.667 min  
 Delta R.T.: -0.043 min  
 Response: -2239810  
 Conc: N.D.



#18 Endrin aldehyde

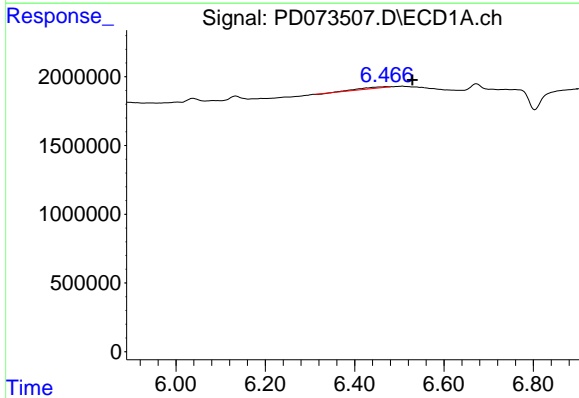
R.T.: 6.038 min  
 Delta R.T.: 0.007 min  
 Response: 448519  
 Conc: 0.18 ng/ml

Instrument :  
 ECD\_D  
 ClientSampleId :



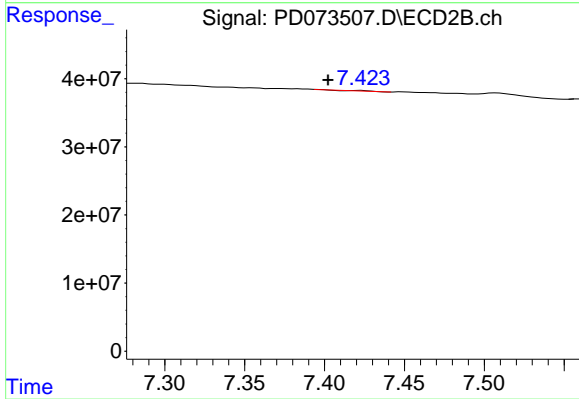
#18 Endrin aldehyde

R.T.: 6.838 min  
 Delta R.T.: -0.003 min  
 Response: 740854  
 Conc: N.D.



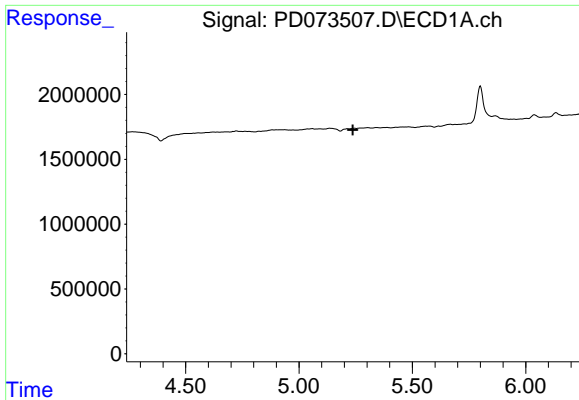
#20 Methoxychlor

R.T.: 6.471 min  
 Delta R.T.: -0.058 min  
 Response: 371703  
 Conc: 0.25 ng/ml



#20 Methoxychlor

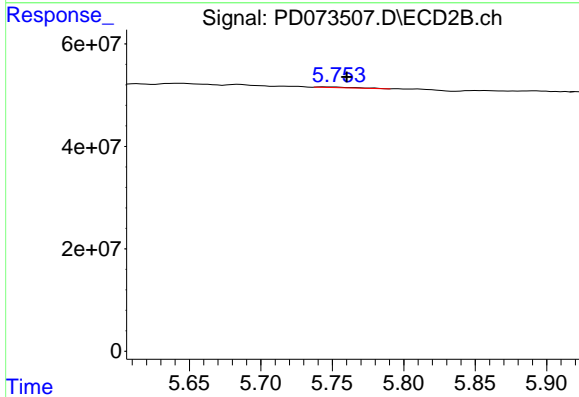
R.T.: 7.423 min  
 Delta R.T.: 0.021 min  
 Response: 873121  
 Conc: N.D.



#22 Toxaphene-1

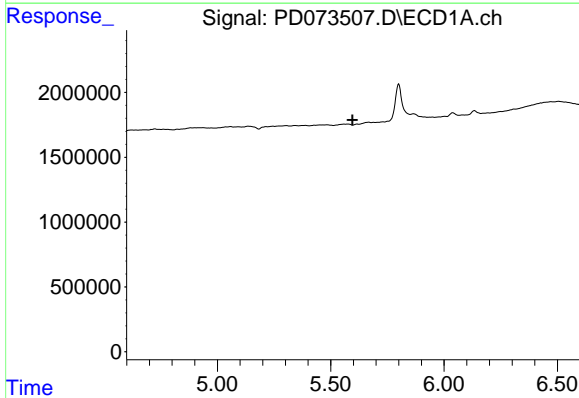
R.T.: 0.000 min  
 Exp R.T.: 5.237 min  
 Response: 0  
 Conc: N.D.

Instrument :  
 ECD\_D  
 ClientSampleId :



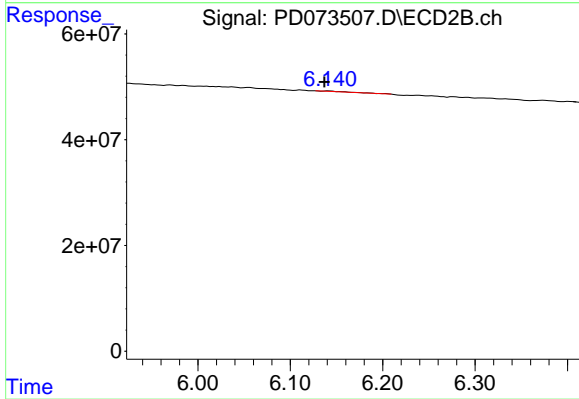
#22 Toxaphene-1

R.T.: 5.744 min  
 Delta R.T.: -0.016 min  
 Response: 2719302  
 Conc: 21.70 ng/ml



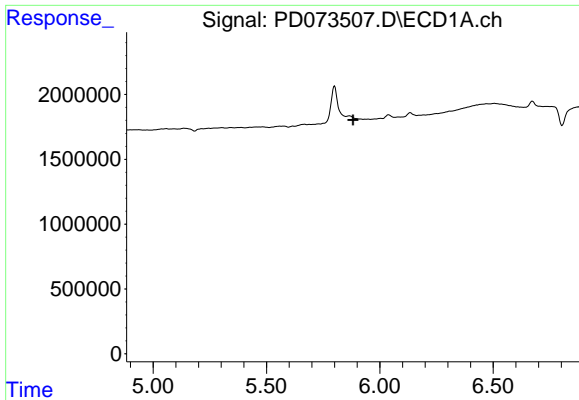
#23 Toxaphene-2

R.T.: 0.000 min  
 Exp R.T.: 5.596 min  
 Response: 0  
 Conc: N.D.



#23 Toxaphene-2

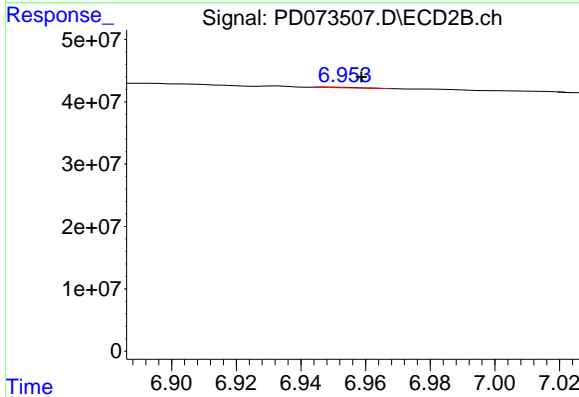
R.T.: 6.142 min  
 Delta R.T.: 0.005 min  
 Response: 747930  
 Conc: 3.15 ng/ml



#24 Toxaphene-3

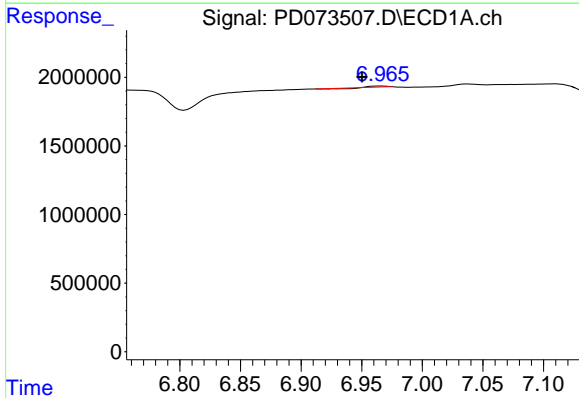
R.T.: 0.000 min  
 Exp R.T.: 5.881 min  
 Response: 0  
 Conc: N.D.

Instrument :  
 ECD\_D  
 ClientSampleId :



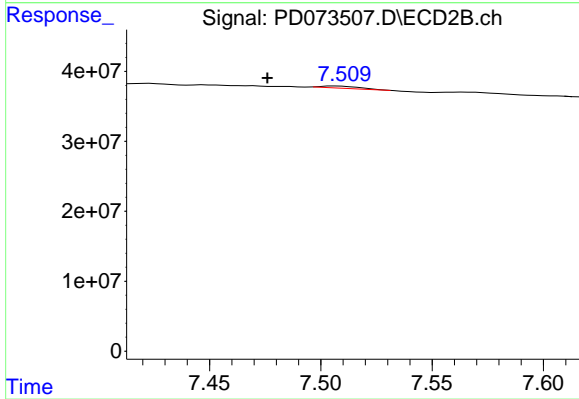
#24 Toxaphene-3

R.T.: 6.948 min  
 Delta R.T.: -0.010 min  
 Response: 168322  
 Conc: 0.29 ng/ml



#26 Toxaphene-5

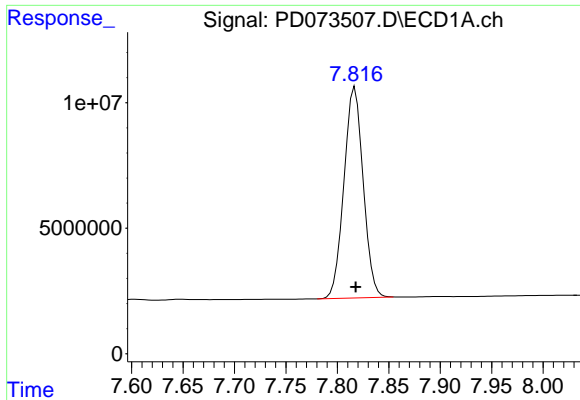
R.T.: 6.966 min  
 Delta R.T.: 0.015 min  
 Response: 33499  
 Conc: 0.58 ng/ml



#26 Toxaphene-5

R.T.: 7.507 min  
 Delta R.T.: 0.031 min  
 Response: 3150608  
 Conc: 10.17 ng/ml

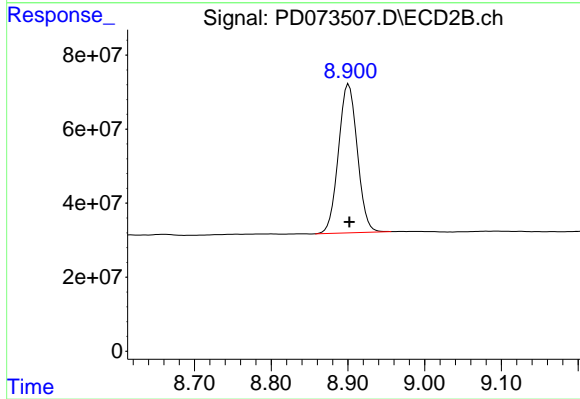




#27 Decachlorobiphenyl

R.T.: 7.817 min  
Delta R.T.: 0.000 min  
Response: 109376964  
Conc: 36.60 ng/ml

Instrument :  
ECD\_D  
ClientSampleId :



#27 Decachlorobiphenyl

R.T.: 8.901 min  
Delta R.T.: 0.000 min  
Response: 688441006  
Conc: 38.60 ng/ml