

Data Path : Z:\pestpcbsrv\HPCHEM1\ECD_D\Data\PD122823\
 Data File : PD080569.D
 Signal(s) : Signal #1: ECD1A.ch Signal #2: ECD2B.ch
 Acq On : 27 Dec 2023 15:14
 Operator : AR\AJ
 Sample : PIBLK147
 Misc :
 ALS Vial : 2 Sample Multiplier: 1

Instrument :
 ECD_D
 ClientSampleId :
 PIBLK900

Integration File signal 1: autoint1.e
 Integration File signal 2: autoint2.e
 Quant Time: Dec 27 20:51:02 2023
 Quant Method : Z:\pestpcbsrv\HPCHEM1\ECD_D\Method\PD121623CLP.M
 Quant Title : GC Extractables
 QLast Update : Thu Dec 21 13:52:23 2023
 Response via : Initial Calibration
 Integrator: ChemStation

Volume Inj. : 1 µl
 Signal #1 Phase : ZB-MR2 Signal #2 Phase: ZB-MR2
 Signal #1 Info : 30M x 0.32mm x0.5 Signal #2 Info : 30M x 0.32mm x 0.25µm

Compound	RT#1	RT#2	Resp#1	Resp#2	ng/ml	ng/ml

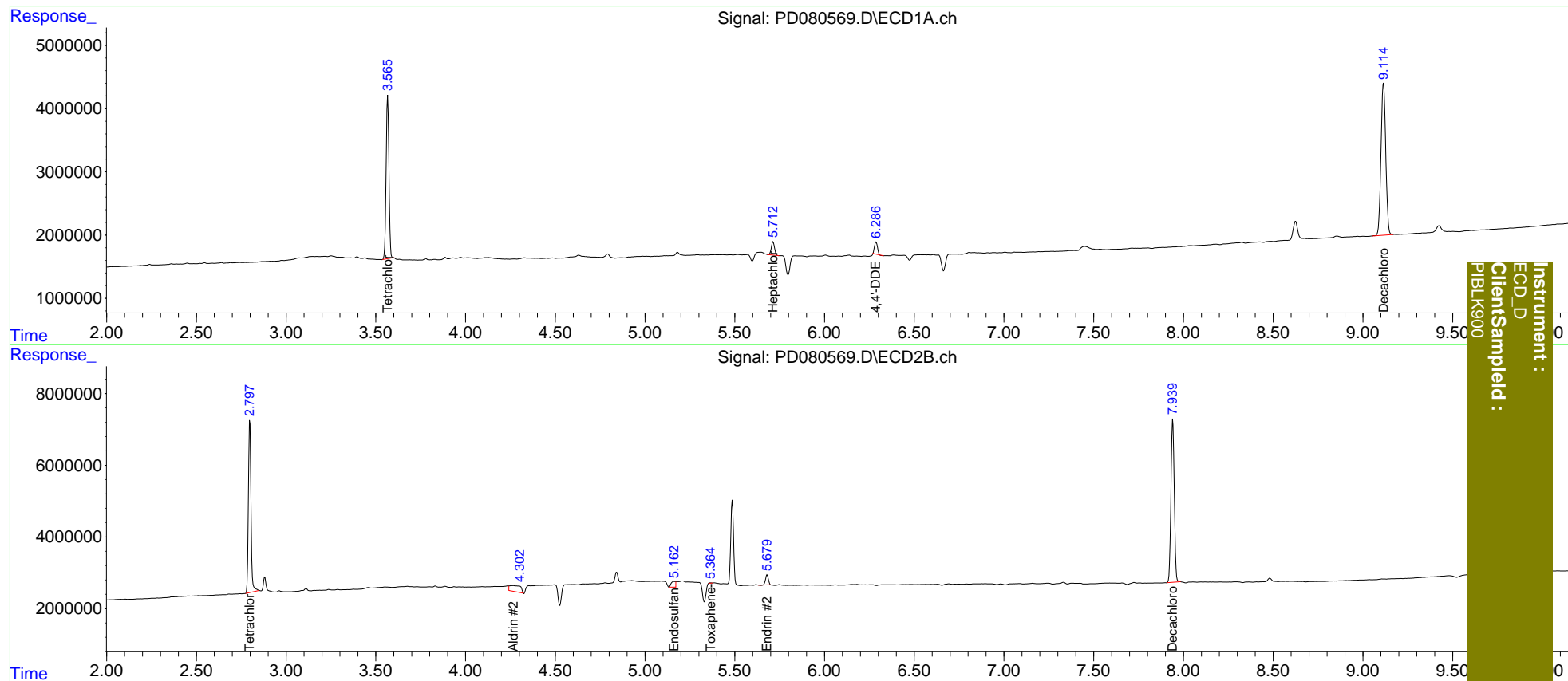
System Monitoring Compounds						
1) SA Tetrachlo...	3.566	2.798	28158332	48481623	22.054	21.804
2) SA Decachlor...	9.115	7.941	44394055	58692763	27.612	24.453
Target Compounds						
2) A alpha-BHC	0.000	3.287	0	118792	N.D.	<MDL
3) MA gamma-BHC...	0.000	3.647	0	212204	N.D.	<MDL
4) MA Heptachlor	0.000	3.937f	0	52657	N.D.	<MDL
5) MB Aldrin	0.000	4.266	0	7107414	N.D.	2.012
6) B beta-BHC	0.000	3.937	0	52657	N.D.	<MDL
8) B Heptachlo...	5.714	4.780	2590617	162660	1.206	<MDL #
9) A Endosulfan I	0.000	5.163f	0	2524970	N.D.	0.921
12) B 4,4'-DDE	6.288f	5.209f	2210273	264098	1.144	<MDL #
13) MA Dieldrin	0.000	5.366	0	84260	N.D.	<MDL
14) MA Endrin	0.000	5.681	0	3027170	N.D.	1.151
17) MA 4,4'-DDT	0.000	6.061	0	134300	N.D.	<MDL
18) B Endrin al...	0.000	6.151	0	120276	N.D.	<MDL
23) Toxaphene-2	0.000	5.366	0	84260	N.D.	4.913

(f)=RT Delta > 1/2 Window (#)=Amounts differ by > 25% (m)=manual int.

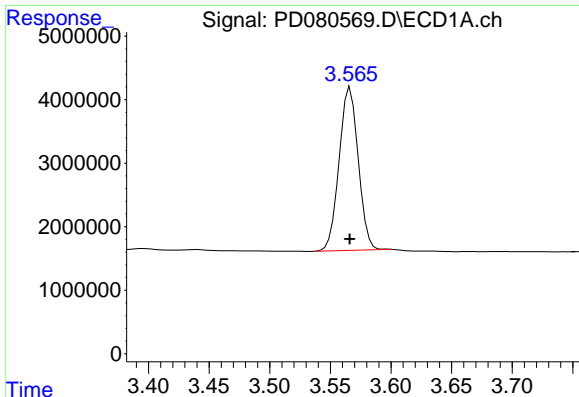
Data Path : Z:\pestpcbsrv\HPCHEM1\ECD_D\Data\PD122823\
 Data File : PD080569.D
 Signal(s) : Signal #1: ECD1A.ch Signal #2: ECD2B.ch
 Acq On : 27 Dec 2023 15:14
 Operator : AR\AJ
 Sample : PIBLK147
 Misc :
 ALS Vial : 2 Sample Multiplier: 1

Integration File signal 1: autoint1.e
 Integration File signal 2: autoint2.e
 Quant Time: Dec 27 20:51:02 2023
 Quant Method : Z:\pestpcbsrv\HPCHEM1\ECD_D\Method\PD121623CLP.M
 Quant Title : GC Extractables
 QLast Update : Thu Dec 21 13:52:23 2023
 Response via : Initial Calibration
 Integrator: ChemStation

Volume Inj. : 1 µl
 Signal #1 Phase : ZB-MR1 Signal #2 Phase: ZB-MR2
 Signal #1 Info : 30M x 0.32mm x0.5 Signal #2 Info : 30M x 0.32mm x 0.25µm



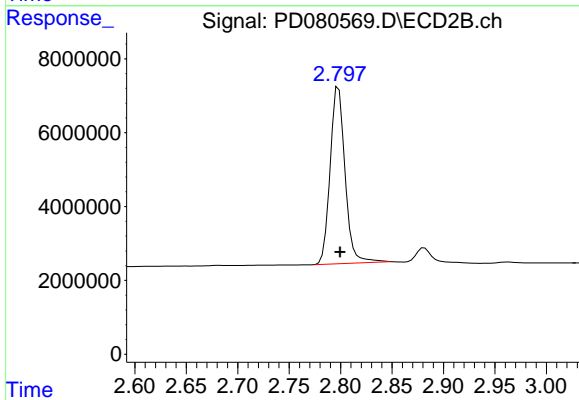
Instrument :
 ECD_D
 ClientSampled :
 PIBLK900



#1 Tetrachloro-m-xylene

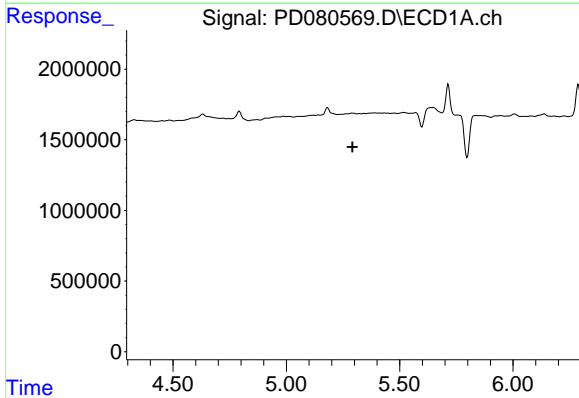
R.T.: 3.566 min
 Delta R.T.: 0.000 min
 Response: 28158332
 Conc: 22.05 ng/ml

Instrument :
 ECD_D
 ClientSampleId :
 PIBLK900



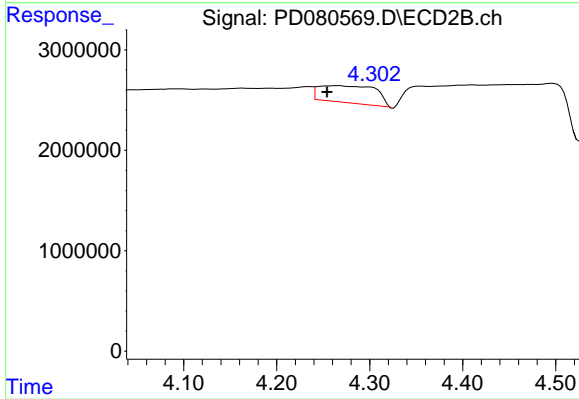
#1 Tetrachloro-m-xylene

R.T.: 2.798 min
 Delta R.T.: -0.001 min
 Response: 48481623
 Conc: 21.80 ng/ml



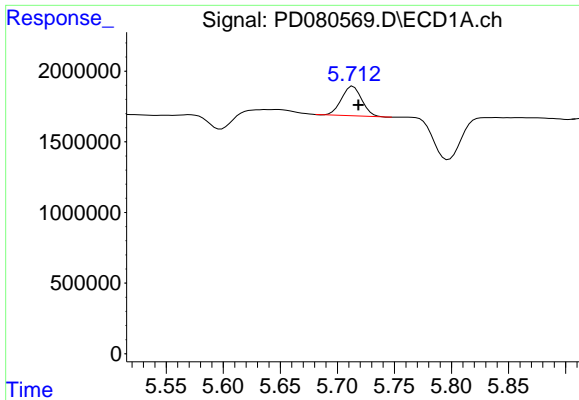
#5 Aldrin

R.T.: 0.000 min
 Exp R.T. : 5.292 min
 Response: 0
 Conc: N.D.



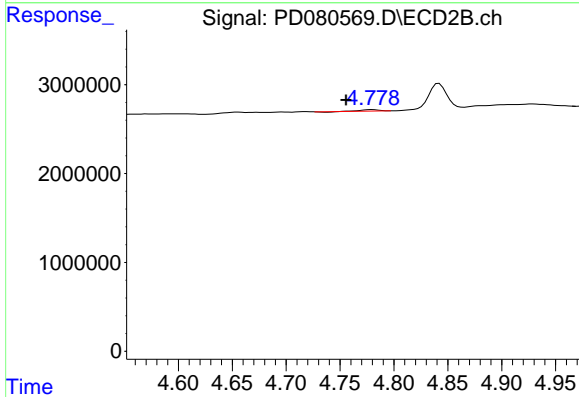
#5 Aldrin

R.T.: 4.266 min
 Delta R.T.: 0.012 min
 Response: 7107414
 Conc: 2.01 ng/ml

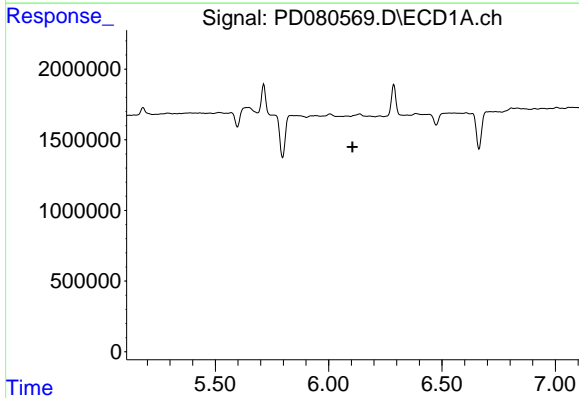


#8 Heptachlor epoxide
 R.T.: 5.714 min
 Delta R.T.: -0.005 min
 Response: 2590617
 Conc: 1.21 ng/ml

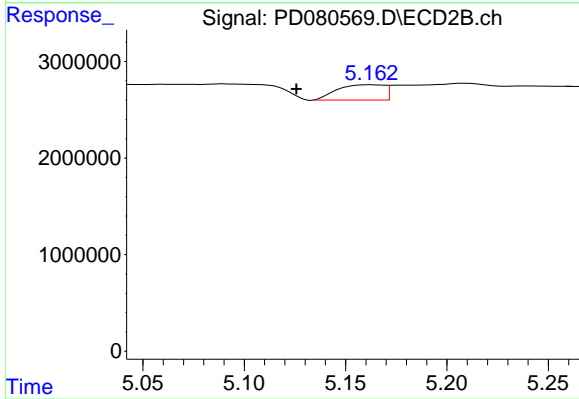
Instrument :
 ECD_D
 ClientSampleId :
 PIBLK900



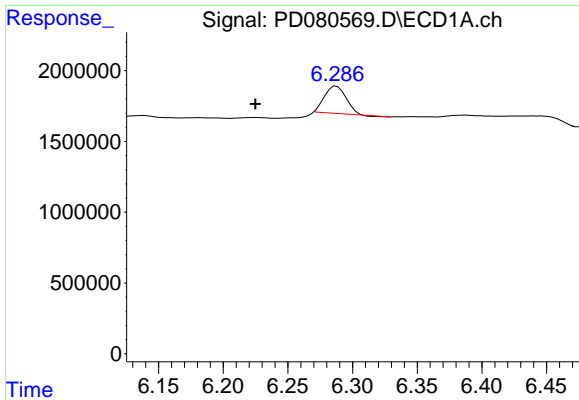
#8 Heptachlor epoxide
 R.T.: 4.780 min
 Delta R.T.: 0.024 min
 Response: 162660
 Conc: N.D.



#9 Endosulfan I
 R.T.: 0.000 min
 Exp R.T. : 6.106 min
 Response: 0
 Conc: N.D.

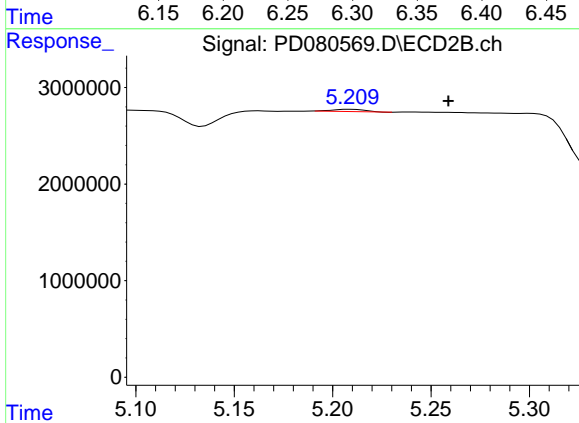


#9 Endosulfan I
 R.T.: 5.163 min
 Delta R.T.: 0.037 min
 Response: 2524970
 Conc: 0.92 ng/ml

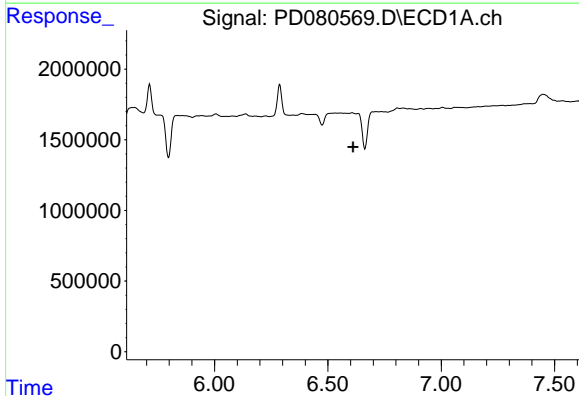


#12 4,4'-DDE
 R.T.: 6.288 min
 Delta R.T.: 0.063 min
 Response: 2210273
 Conc: 1.14 ng/ml

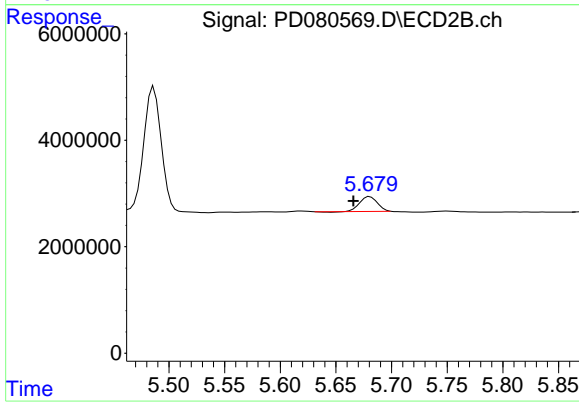
Instrument :
 ECD_D
 ClientSampleId :
 PIBLK900



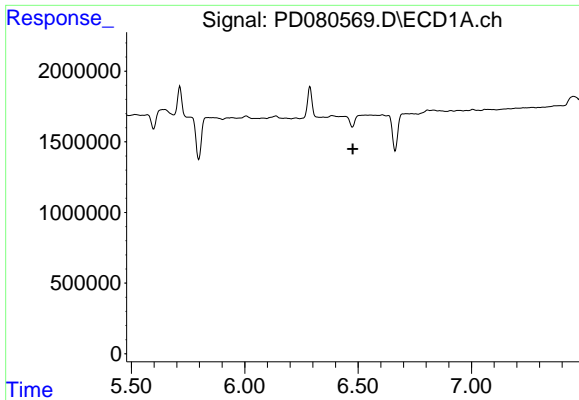
#12 4,4'-DDE
 R.T.: 5.209 min
 Delta R.T.: -0.050 min
 Response: 264098
 Conc: N.D.



#14 Endrin
 R.T.: 0.000 min
 Exp R.T. : 6.612 min
 Response: 0
 Conc: N.D.



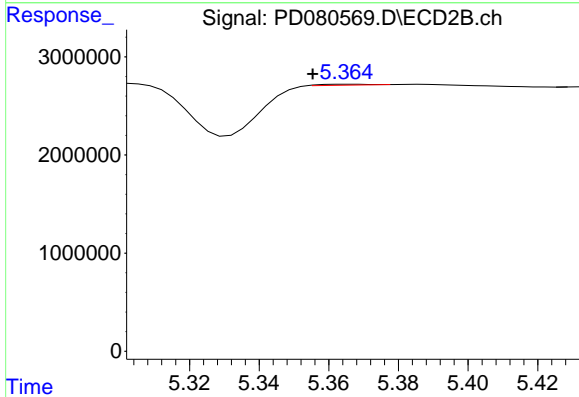
#14 Endrin
 R.T.: 5.681 min
 Delta R.T.: 0.015 min
 Response: 3027170
 Conc: 1.15 ng/ml



#23 Toxaphene-2

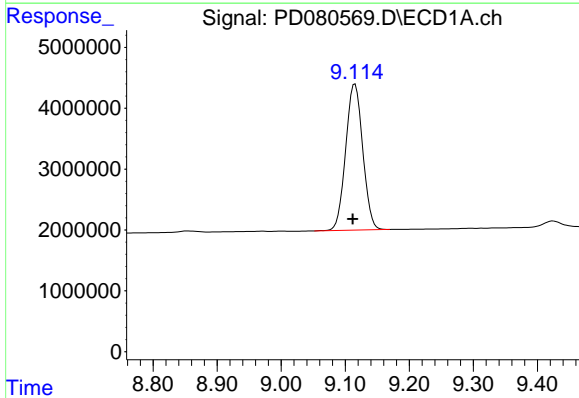
R.T.: 0.000 min
 Exp R.T.: 6.477 min
 Response: 0
 Conc: N.D.

Instrument :
 ECD_D
 ClientSampleId :
 PIBLK900



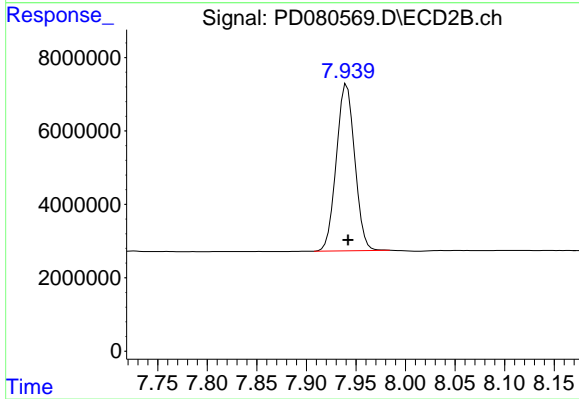
#23 Toxaphene-2

R.T.: 5.366 min
 Delta R.T.: 0.010 min
 Response: 84260
 Conc: 4.91 ng/ml



#27 Decachlorobiphenyl

R.T.: 9.115 min
 Delta R.T.: 0.003 min
 Response: 44394055
 Conc: 27.61 ng/ml



#27 Decachlorobiphenyl

R.T.: 7.941 min
 Delta R.T.: -0.001 min
 Response: 58692763
 Conc: 24.45 ng/ml