

Data Path : Z:\pestpcbsrv\HPCHEM1\ECD_D\Data\PD122922\
 Data File : PD073557.D
 Signal(s) : Signal #1: ECD1A.ch Signal #2: ECD2B.ch
 Acq On : 29 Dec 2022 11:59
 Operator : AR\AJ
 Sample : N6131-12
 Misc :
 ALS Vial : 6 Sample Multiplier: 1

Instrument :
 ECD_D
 ClientSampleId :

Integration File signal 1: autoint1.e
 Integration File signal 2: autoint2.e
 Quant Time: Dec 29 22:09:30 2022
 Quant Method : Z:\pestpcbsrv\HPCHEM1\ECD_D\Method\PD122822CLP.M
 Quant Title : GC Extractables
 QLast Update : Wed Dec 28 11:00:45 2022
 Response via : Initial Calibration
 Integrator: ChemStation

Volume Inj. : 1 µl
 Signal #1 Phase : ZB-MR2 Signal #2 Phase: ZB-MR2
 Signal #1 Info : 30M x 0.32mm x0.5 Signal #2 Info : 30M x 0.32mm x 0.25µm

Compound	RT#1	RT#2	Resp#1	Resp#2	ng/ml	ng/ml

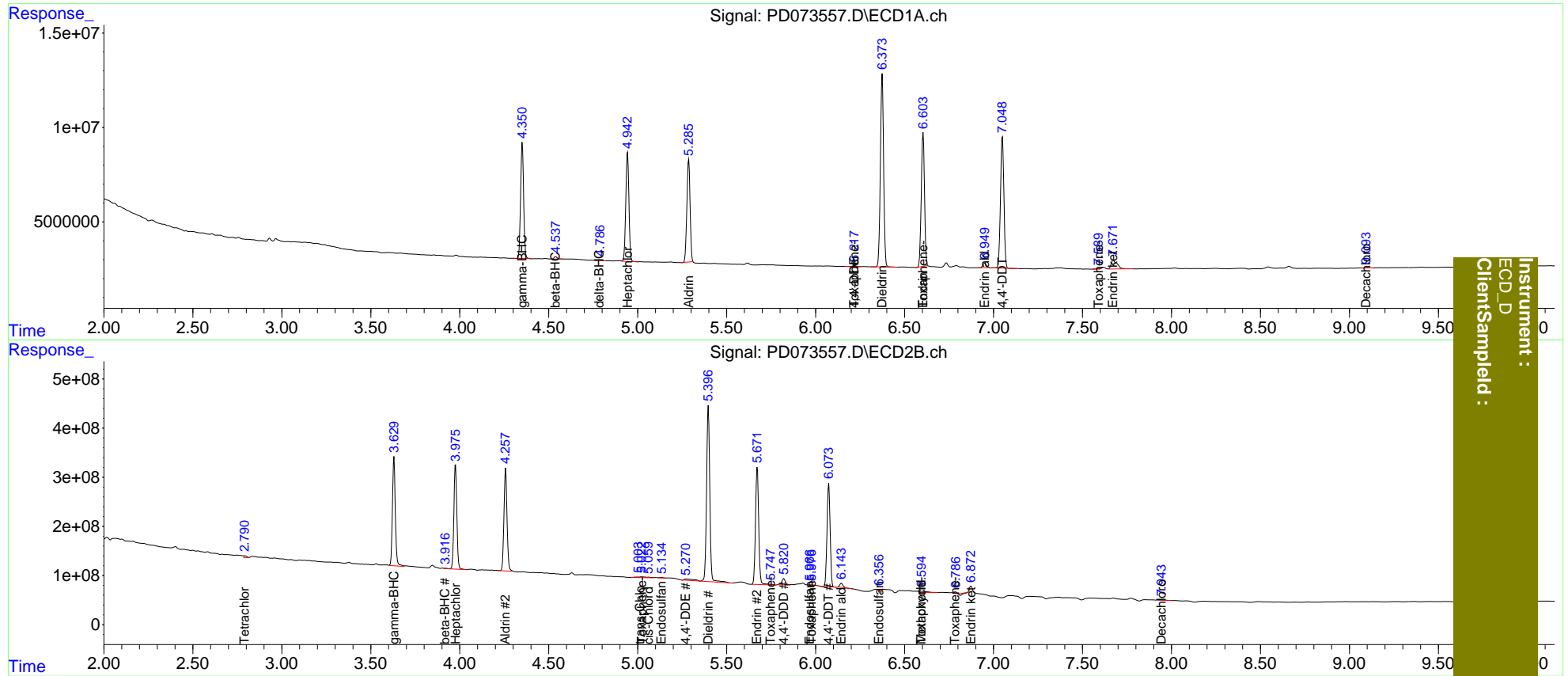
System Monitoring Compounds						
1) SA Tetrachlo...	0.000	2.790	0	41507766	N.D.	0.459
2) SA Decachlor...	9.095	7.944	232765	4647126	0.105	0.143 #
Target Compounds						
2) A alpha-BHC	0.000	3.311	0	12454445	N.D.	<MDL
3) MA gamma-BHC...	4.352	3.631	71523270	2493.7E6	20.189	18.218
4) MA Heptachlor	4.943	3.976	70561850	2473.9E6	19.550	18.557
5) MB Aldrin	5.287	4.258	67821589	2484.0E6	19.307	17.868
6) B beta-BHC	4.539	3.918	1539341	9611408	0.945	0.173 #
7) B delta-BHC	4.786	4.163	551509	5800135	0.149	<MDL #
8) B Heptachlo...	5.706	4.725f	218379	9893082	<MDL	<MDL #
9) A Endosulfan I	0.000	5.135	0	14480176	N.D.	0.140
10) B trans-Chl...	0.000	5.003	0	17889466	N.D.	0.150
11) B cis-Chlor...	0.000	5.061	0	19116559	N.D.	0.163
12) B 4,4'-DDE	6.218	5.271	709389	103.2E6	0.239	1.029 #
13) MA Dieldrin	6.374	5.397	128.1E6	4511.2E6	40.804	42.521
14) MA Endrin	6.604	5.672	89022808	2966.3E6	36.926	38.780
15) B Endosulfa...	0.000	5.966	0	9717441	N.D.	0.122
16) A 4,4'-DDD	0.000	5.821	0	193.6E6	N.D.	2.400
17) MA 4,4'-DDT	7.050	6.074	92993991	2558.6E6	40.250	37.392
18) B Endrin al...	6.951	6.145	3206585	95925560	1.559	1.568
19) B Endosulfa...	0.000	6.358	0	49495899	N.D.	0.704
20) A Methoxychlor	0.000	6.596f	0	82632270	N.D.	3.077
21) B Endrin ke...	7.673	6.873	11162060	68567700	3.984	1.084 #
22) Toxaphene-1	6.218f	5.023	709389	37232363	33.026	56.178 #
23) Toxaphene-2	0.000	5.748	0	17225147	N.D.	35.689
24) Toxaphene-3	6.604f	5.977	89022808	16009999	4768.738	28.995 #
25) Toxaphene-4	0.000	6.596f	0	82632270	N.D.	57.210
26) Toxaphene-5	7.590	6.786	411894	27579141	9.750	15.517 #

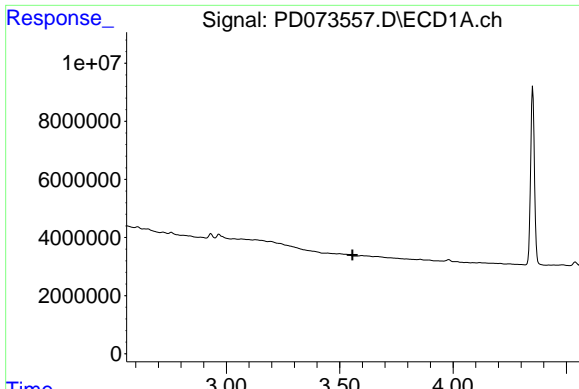
(f)=RT Delta > 1/2 Window (#)=Amounts differ by > 25% (m)=manual int.

Data Path : Z:\pestpcbsrv\HPCHEM1\ECD_D\Data\PD122922\
 Data File : PD073557.D
 Signal(s) : Signal #1: ECD1A.ch Signal #2: ECD2B.ch
 Acq On : 29 Dec 2022 11:59
 Operator : AR\AJ
 Sample : N6131-12
 Misc :
 ALS Vial : 6 Sample Multiplier: 1

Integration File signal 1: autoint1.e
 Integration File signal 2: autoint2.e
 Quant Time: Dec 29 22:09:30 2022
 Quant Method : Z:\pestpcbsrv\HPCHEM1\ECD_D\Method\PD122822CLP.M
 Quant Title : GC Extractables
 QLast Update : Wed Dec 28 11:00:45 2022
 Response via : Initial Calibration
 Integrator: ChemStation

Volume Inj. : 1 µl
 Signal #1 Phase : ZB-MR1 Signal #2 Phase: ZB-MR2
 Signal #1 Info : 30M x 0.32mm x0.5 Signal #2 Info : 30M x 0.32mm x 0.25µm

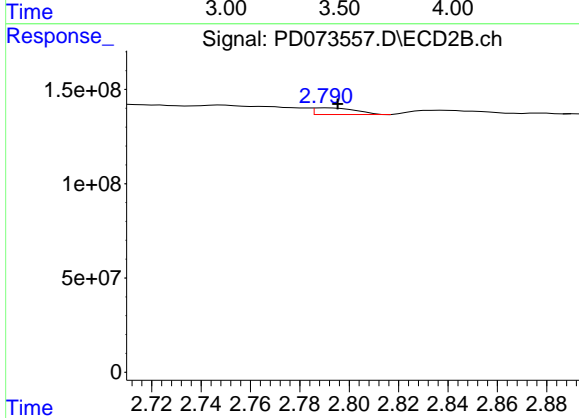




#1 Tetrachloro-m-xylene

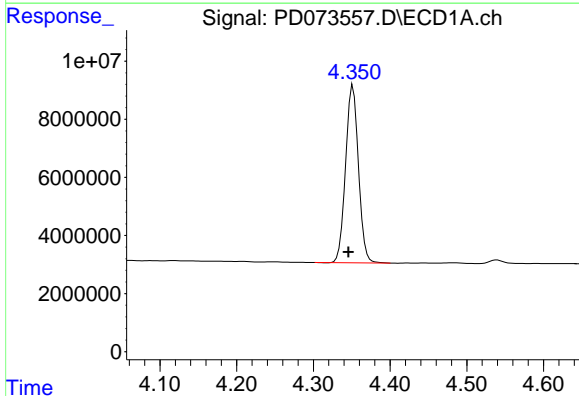
R.T.: 0.000 min
 Exp R.T.: 3.557 min
 Response: 0
 Conc: N.D.

Instrument :
 ECD_D
 ClientSampleId :



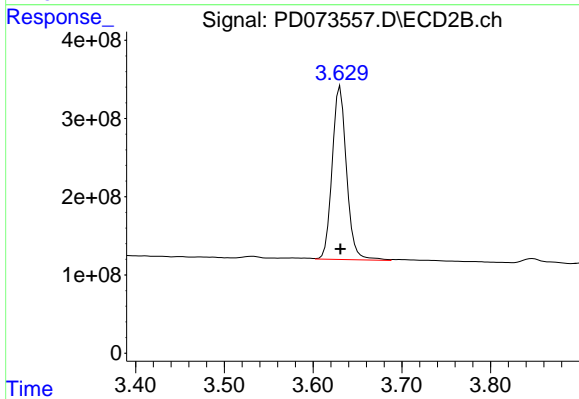
#1 Tetrachloro-m-xylene

R.T.: 2.790 min
 Delta R.T.: -0.005 min
 Response: 41507766
 Conc: 0.46 ng/ml



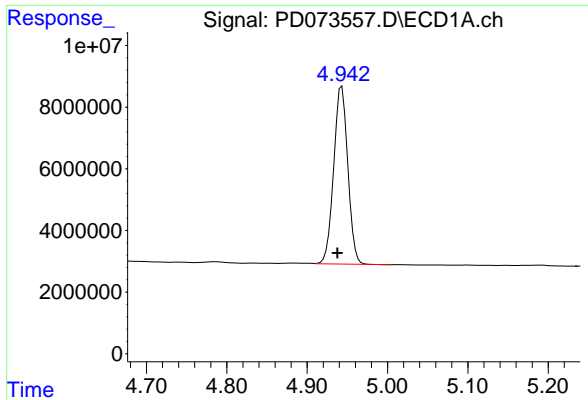
#3 gamma-BHC (Lindane)

R.T.: 4.352 min
 Delta R.T.: 0.006 min
 Response: 71523270
 Conc: 20.19 ng/ml



#3 gamma-BHC (Lindane)

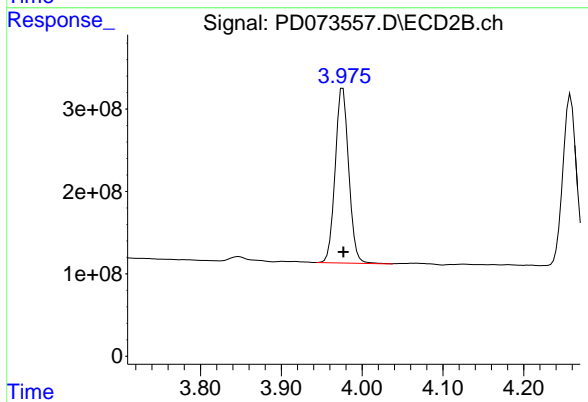
R.T.: 3.631 min
 Delta R.T.: 0.000 min
 Response: 2493712368
 Conc: 18.22 ng/ml



#4 Heptachlor

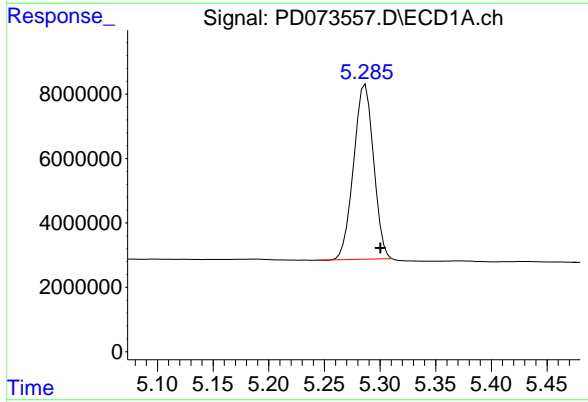
R.T.: 4.943 min
 Delta R.T.: 0.005 min
 Response: 70561850
 Conc: 19.55 ng/ml

Instrument :
 ECD_D
 ClientSampleId :



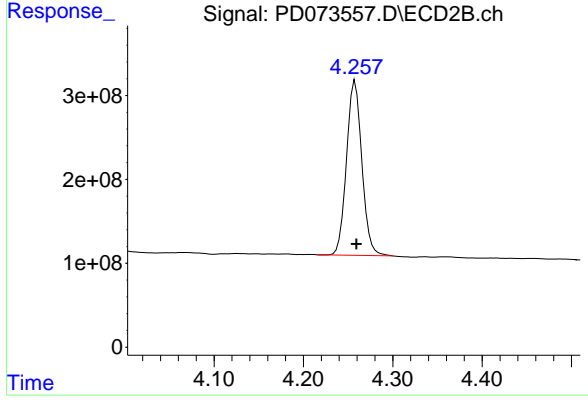
#4 Heptachlor

R.T.: 3.976 min
 Delta R.T.: 0.000 min
 Response: 2473922874
 Conc: 18.56 ng/ml



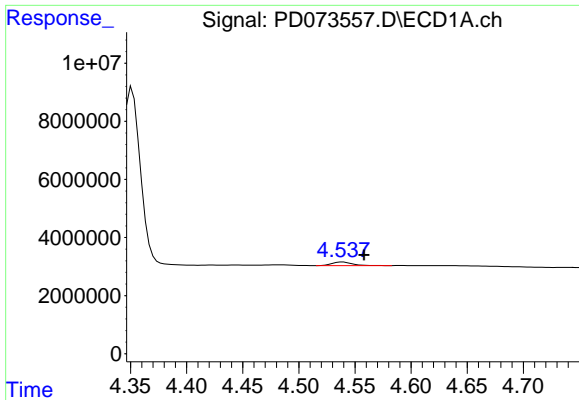
#5 Aldrin

R.T.: 5.287 min
 Delta R.T.: -0.013 min
 Response: 67821589
 Conc: 19.31 ng/ml



#5 Aldrin

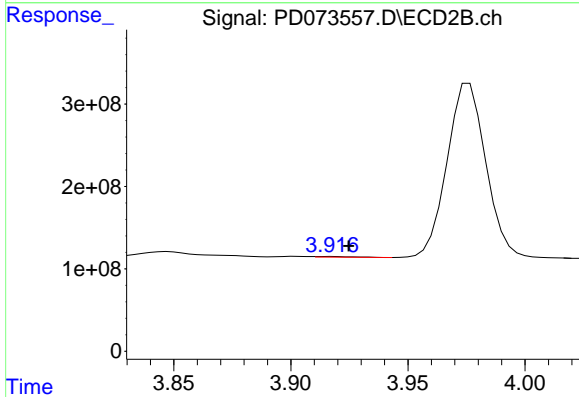
R.T.: 4.258 min
 Delta R.T.: -0.001 min
 Response: 2483962307
 Conc: 17.87 ng/ml



#6 beta-BHC

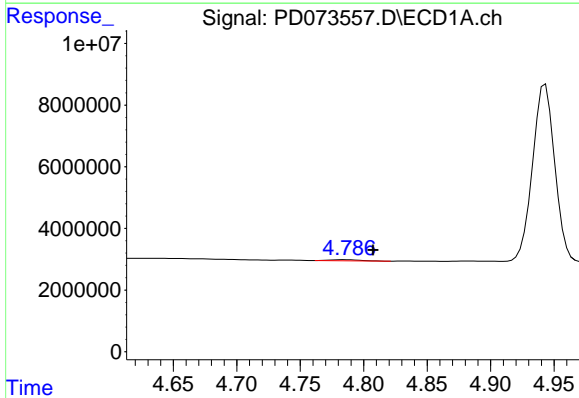
R.T.: 4.539 min
 Delta R.T.: -0.019 min
 Response: 1539341
 Conc: 0.95 ng/ml

Instrument :
 ECD_D
 ClientSampleId :



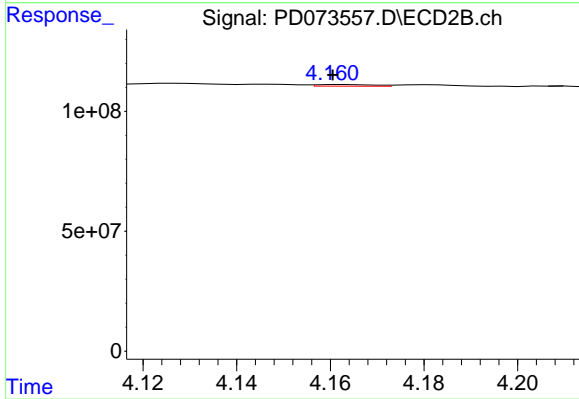
#6 beta-BHC

R.T.: 3.918 min
 Delta R.T.: -0.007 min
 Response: 9611408
 Conc: 0.17 ng/ml



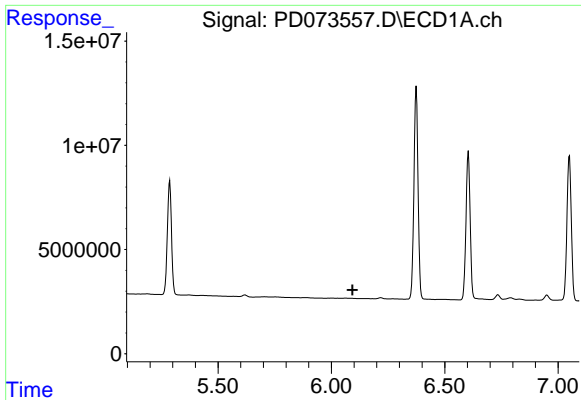
#7 delta-BHC

R.T.: 4.786 min
 Delta R.T.: -0.022 min
 Response: 551509
 Conc: 0.15 ng/ml



#7 delta-BHC

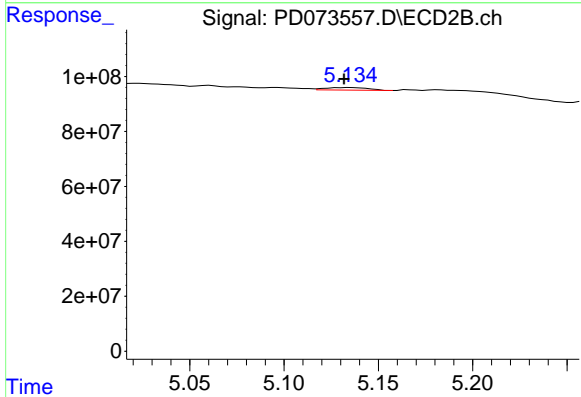
R.T.: 4.163 min
 Delta R.T.: 0.002 min
 Response: 5800135
 Conc: N.D.



#9 Endosulfan I

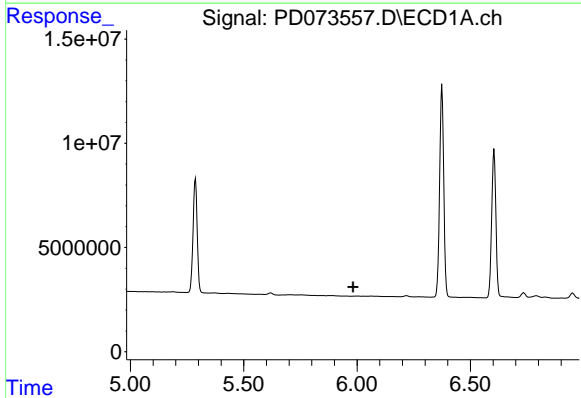
R.T.: 0.000 min
 Exp R.T.: 6.094 min
 Response: 0
 Conc: N.D.

Instrument :
 ECD_D
 ClientSampleId :



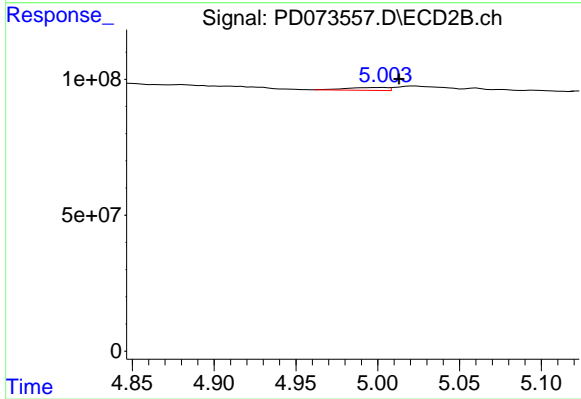
#9 Endosulfan I

R.T.: 5.135 min
 Delta R.T.: 0.003 min
 Response: 14480176
 Conc: 0.14 ng/ml



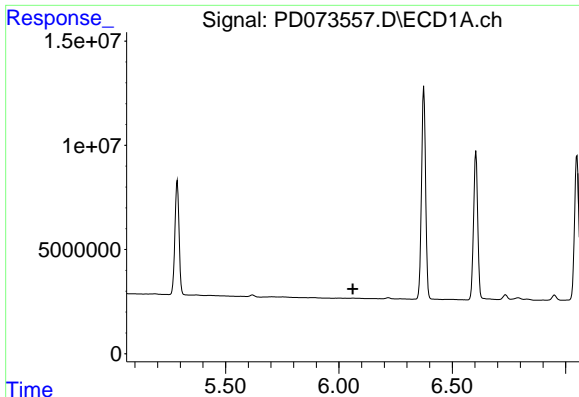
#10 trans-Chlordane

R.T.: 0.000 min
 Exp R.T.: 5.982 min
 Response: 0
 Conc: N.D.



#10 trans-Chlordane

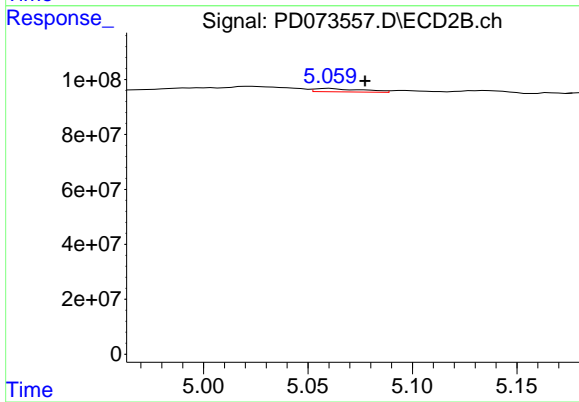
R.T.: 5.003 min
 Delta R.T.: -0.009 min
 Response: 17889466
 Conc: 0.15 ng/ml



#11 cis-Chlordane

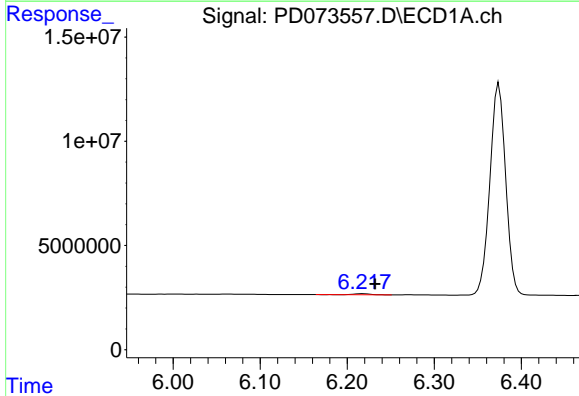
R.T.: 0.000 min
 Exp R.T.: 6.061 min
 Response: 0
 Conc: N.D.

Instrument :
 ECD_D
 ClientSampleId :



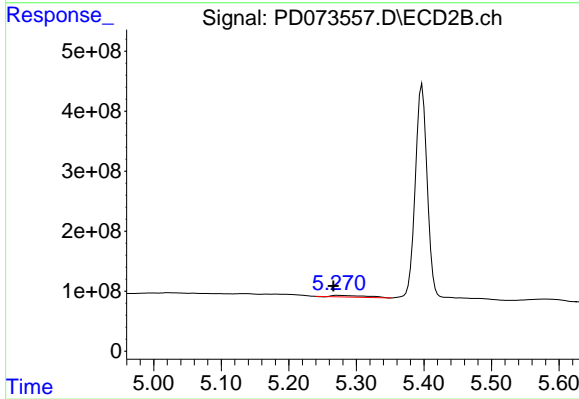
#11 cis-Chlordane

R.T.: 5.061 min
 Delta R.T.: -0.017 min
 Response: 19116559
 Conc: 0.16 ng/ml



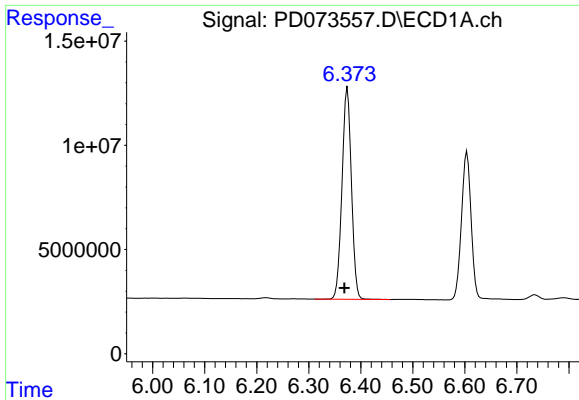
#12 4,4'-DDE

R.T.: 6.218 min
 Delta R.T.: -0.014 min
 Response: 709389
 Conc: 0.24 ng/ml



#12 4,4'-DDE

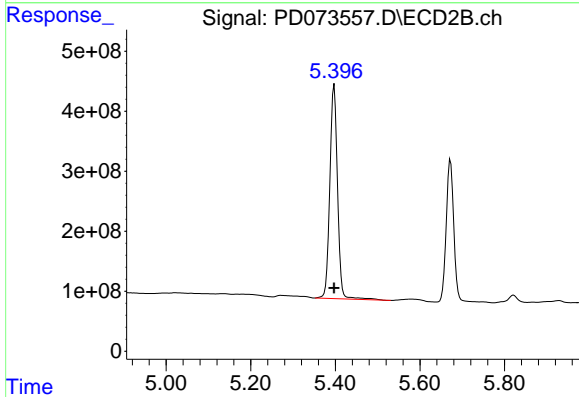
R.T.: 5.271 min
 Delta R.T.: 0.005 min
 Response: 103221118
 Conc: 1.03 ng/ml



#13 Dieldrin

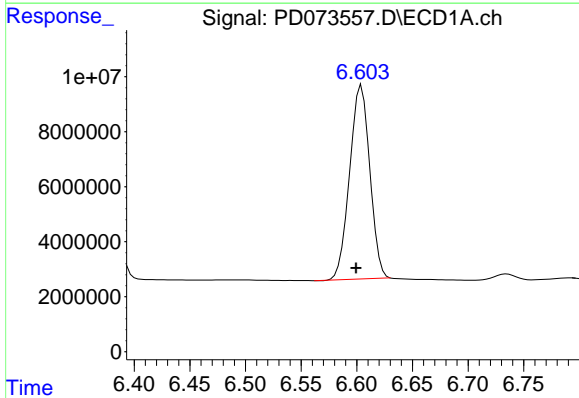
R.T.: 6.374 min
 Delta R.T.: 0.006 min
 Response: 128096734
 Conc: 40.80 ng/ml

Instrument :
 ECD_D
 ClientSampleId :



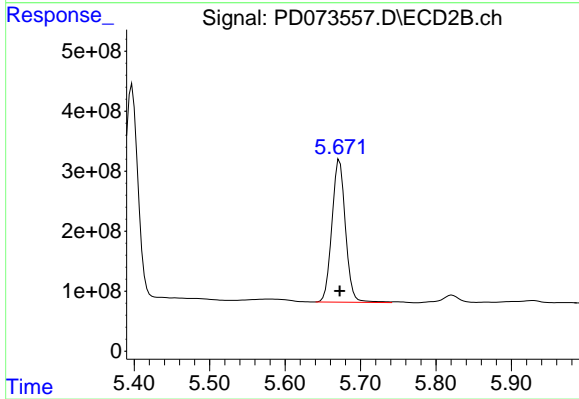
#13 Dieldrin

R.T.: 5.397 min
 Delta R.T.: 0.000 min
 Response: 4511213234
 Conc: 42.52 ng/ml



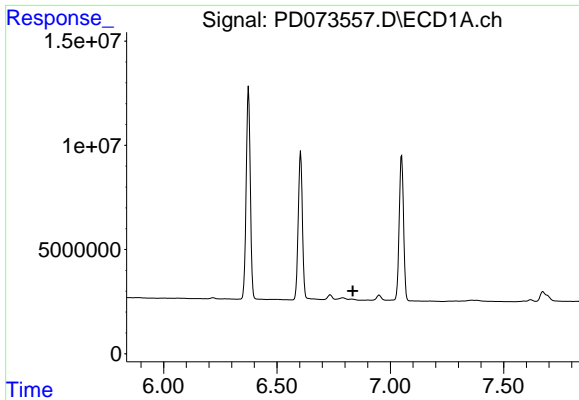
#14 Endrin

R.T.: 6.604 min
 Delta R.T.: 0.005 min
 Response: 89022808
 Conc: 36.93 ng/ml



#14 Endrin

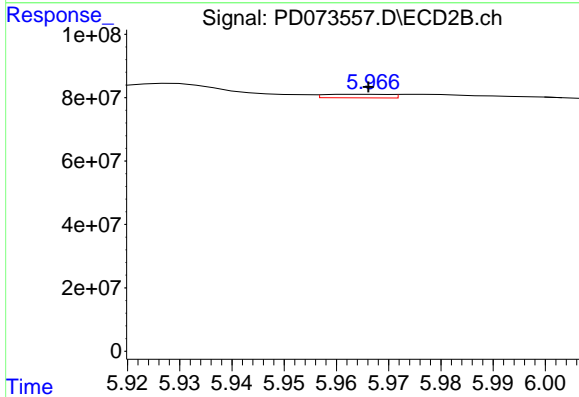
R.T.: 5.672 min
 Delta R.T.: 0.000 min
 Response: 2966318506
 Conc: 38.78 ng/ml



#15 Endosulfan II

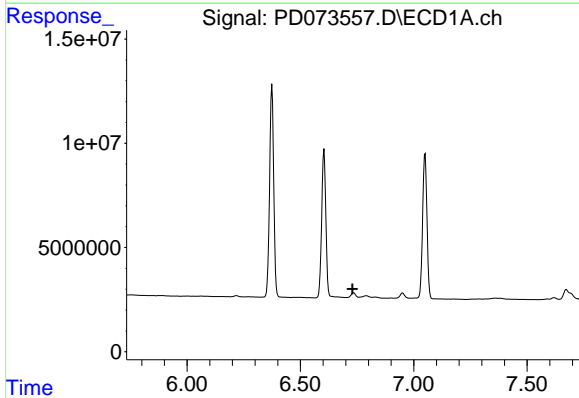
R.T.: 0.000 min
 Exp R.T.: 6.835 min
 Response: 0
 Conc: N.D.

Instrument :
 ECD_D
 ClientSampleId :



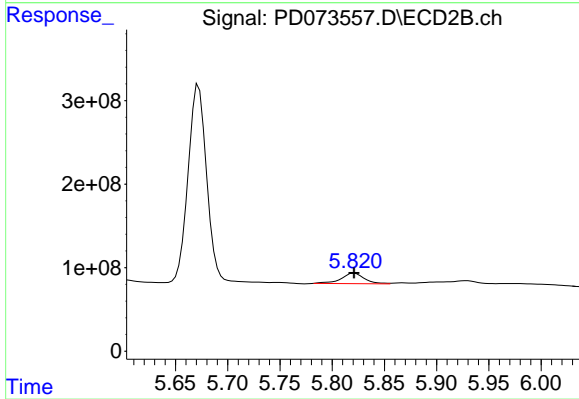
#15 Endosulfan II

R.T.: 5.966 min
 Delta R.T.: 0.000 min
 Response: 9717441
 Conc: 0.12 ng/ml



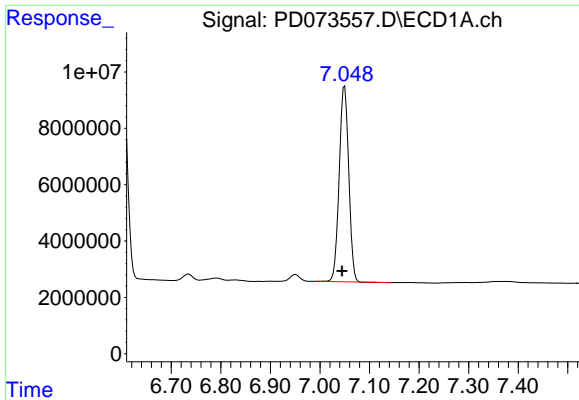
#16 4,4'-DDD

R.T.: 0.000 min
 Exp R.T.: 6.730 min
 Response: 0
 Conc: N.D.



#16 4,4'-DDD

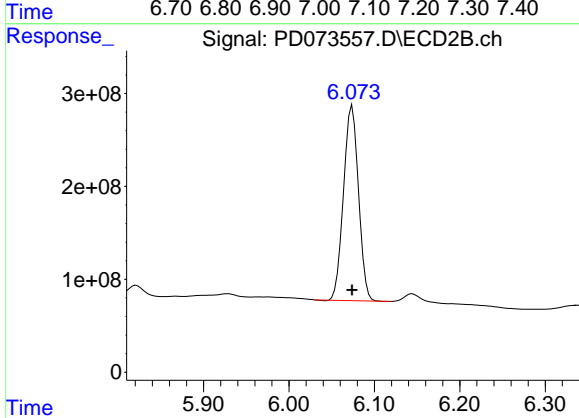
R.T.: 5.821 min
 Delta R.T.: 0.000 min
 Response: 193559526
 Conc: 2.40 ng/ml



#17 4,4'-DDT

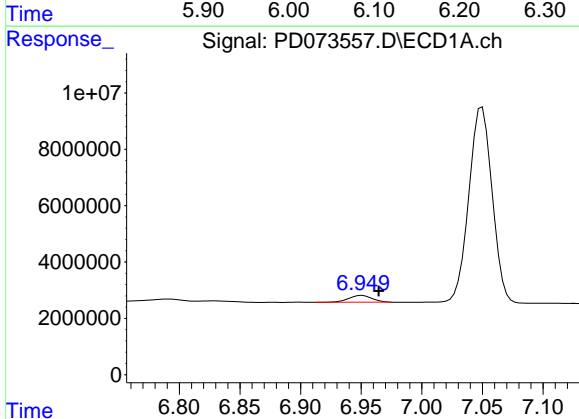
R.T.: 7.050 min
 Delta R.T.: 0.005 min
 Response: 92993991
 Conc: 40.25 ng/ml

Instrument :
 ECD_D
 ClientSampleId :



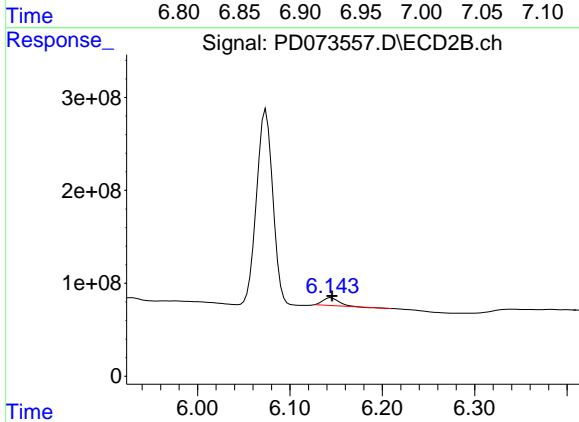
#17 4,4'-DDT

R.T.: 6.074 min
 Delta R.T.: 0.000 min
 Response: 2558641485
 Conc: 37.39 ng/ml



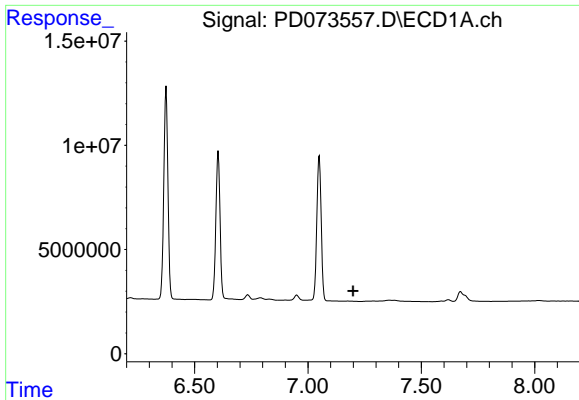
#18 Endrin aldehyde

R.T.: 6.951 min
 Delta R.T.: -0.014 min
 Response: 3206585
 Conc: 1.56 ng/ml



#18 Endrin aldehyde

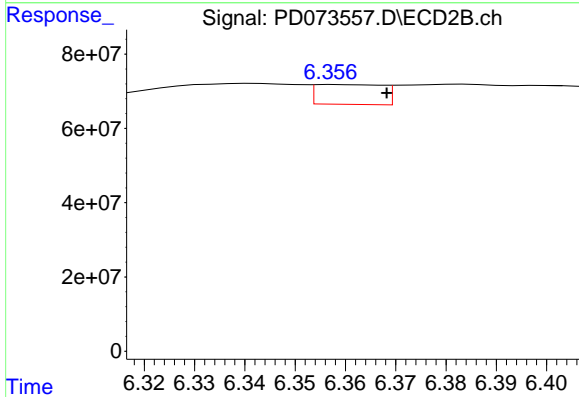
R.T.: 6.145 min
 Delta R.T.: 0.000 min
 Response: 95925560
 Conc: 1.57 ng/ml



#19 Endosulfan Sulfate

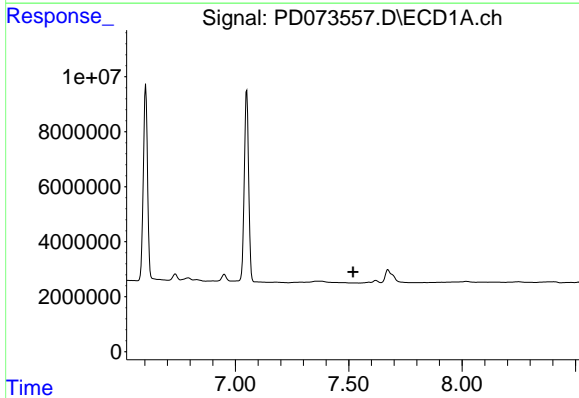
R.T.: 0.000 min
 Exp R.T. : 7.199 min
 Response: 0
 Conc: N.D.

Instrument :
 ECD_D
 ClientSampleId :



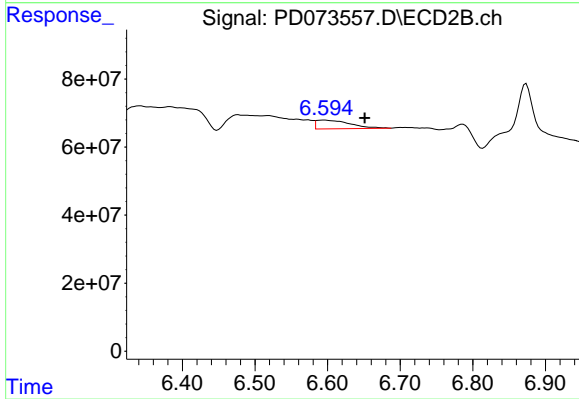
#19 Endosulfan Sulfate

R.T.: 6.358 min
 Delta R.T.: -0.010 min
 Response: 49495899
 Conc: 0.70 ng/ml



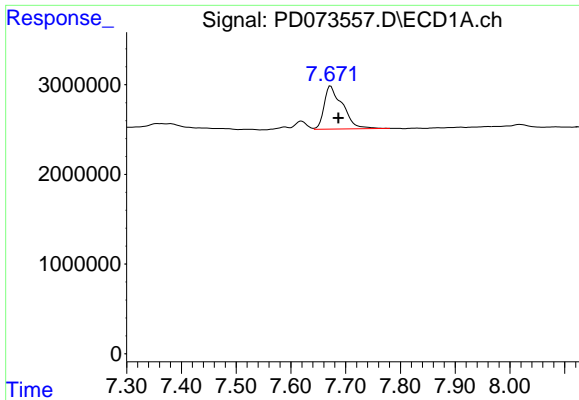
#20 Methoxychlor

R.T.: 0.000 min
 Exp R.T. : 7.519 min
 Response: 0
 Conc: N.D.



#20 Methoxychlor

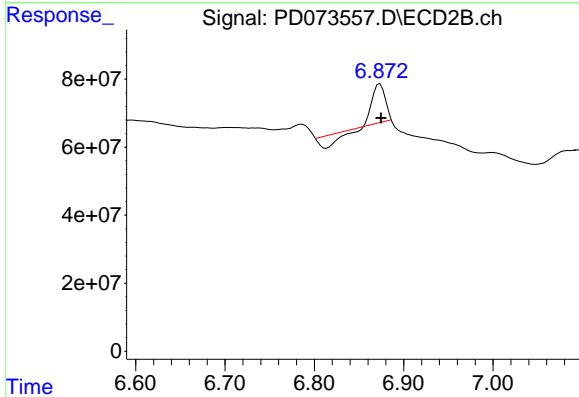
R.T.: 6.596 min
 Delta R.T.: -0.056 min
 Response: 82632270
 Conc: 3.08 ng/ml



#21 Endrin ketone

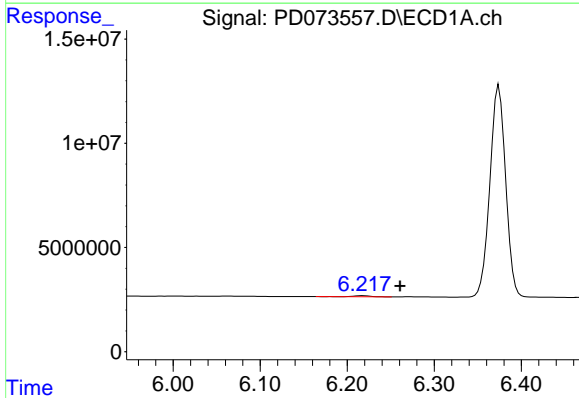
R.T.: 7.673 min
 Delta R.T.: -0.014 min
 Response: 11162060
 Conc: 3.98 ng/ml

Instrument :
 ECD_D
 ClientSampleId :



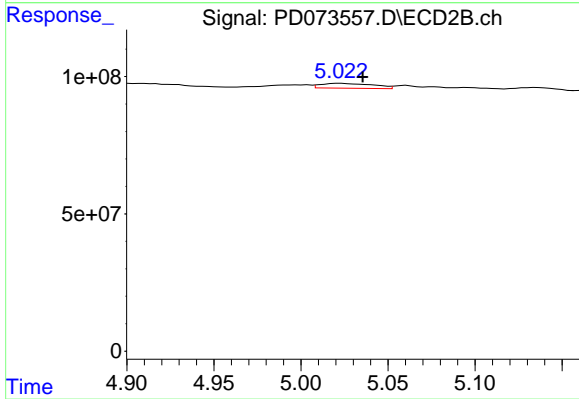
#21 Endrin ketone

R.T.: 6.873 min
 Delta R.T.: -0.001 min
 Response: 68567700
 Conc: 1.08 ng/ml



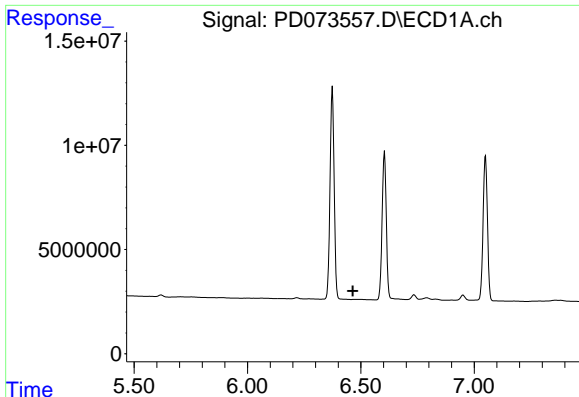
#22 Toxaphene-1

R.T.: 6.218 min
 Delta R.T.: -0.042 min
 Response: 709389
 Conc: 33.03 ng/ml



#22 Toxaphene-1

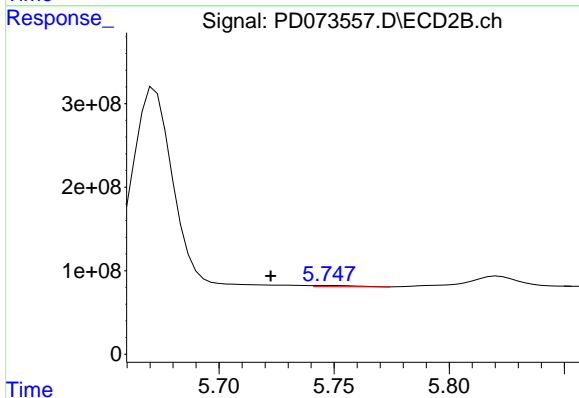
R.T.: 5.023 min
 Delta R.T.: -0.013 min
 Response: 37232363
 Conc: 56.18 ng/ml



#23 Toxaphene-2

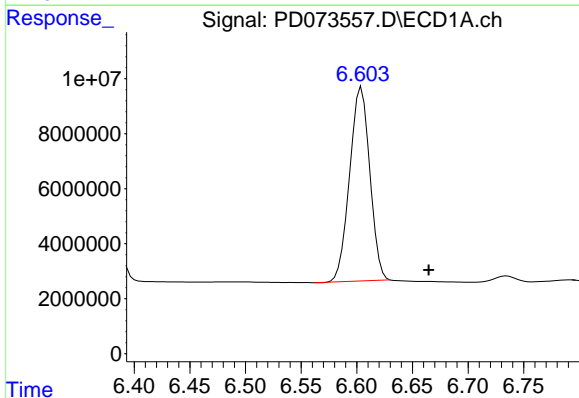
R.T.: 0.000 min
 Exp R.T.: 6.464 min
 Response: 0
 Conc: N.D.

Instrument :
 ECD_D
 ClientSampleId :



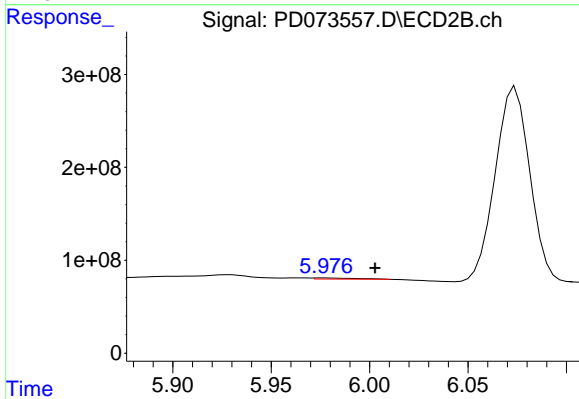
#23 Toxaphene-2

R.T.: 5.748 min
 Delta R.T.: 0.026 min
 Response: 17225147
 Conc: 35.69 ng/ml



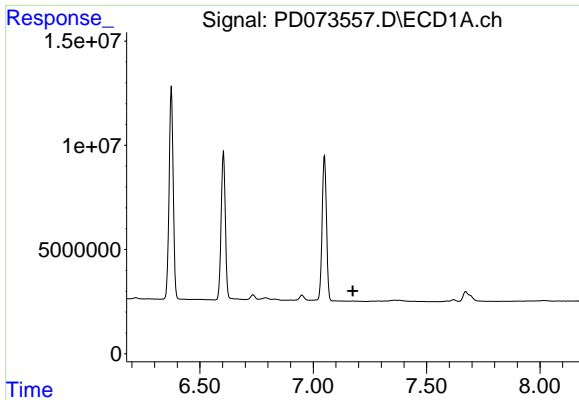
#24 Toxaphene-3

R.T.: 6.604 min
 Delta R.T.: -0.060 min
 Response: 89022808
 Conc: 4768.74 ng/ml



#24 Toxaphene-3

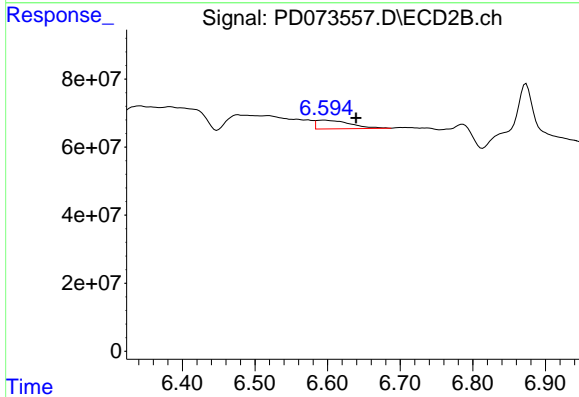
R.T.: 5.977 min
 Delta R.T.: -0.026 min
 Response: 16009999
 Conc: 29.00 ng/ml



#25 Toxaphene-4

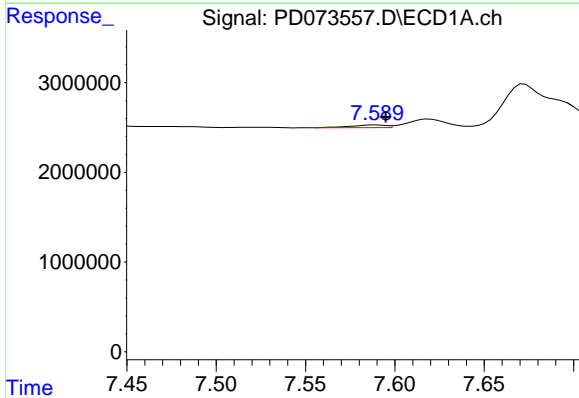
R.T.: 0.000 min
 Exp R.T.: 7.175 min
 Response: 0
 Conc: N.D.

Instrument :
 ECD_D
 ClientSampleId :



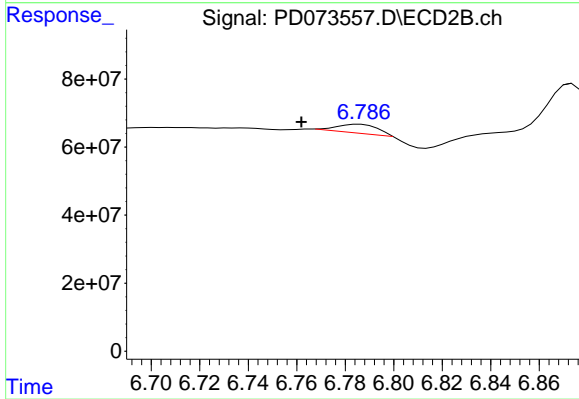
#25 Toxaphene-4

R.T.: 6.596 min
 Delta R.T.: -0.044 min
 Response: 82632270
 Conc: 57.21 ng/ml



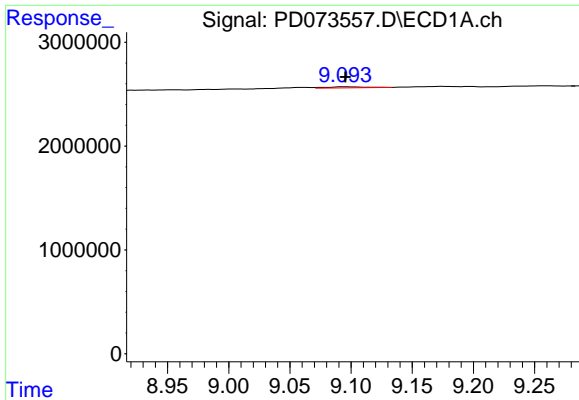
#26 Toxaphene-5

R.T.: 7.590 min
 Delta R.T.: -0.005 min
 Response: 411894
 Conc: 9.75 ng/ml



#26 Toxaphene-5

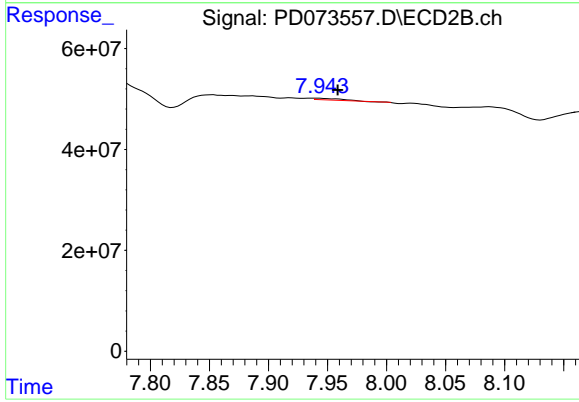
R.T.: 6.786 min
 Delta R.T.: 0.024 min
 Response: 27579141
 Conc: 15.52 ng/ml



#27 Decachlorobiphenyl

R.T.: 9.095 min
Delta R.T.: 0.000 min
Response: 232765
Conc: 0.10 ng/ml

Instrument :
ECD_D
ClientSampleId :



#27 Decachlorobiphenyl

R.T.: 7.944 min
Delta R.T.: -0.015 min
Response: 4647126
Conc: 0.14 ng/ml