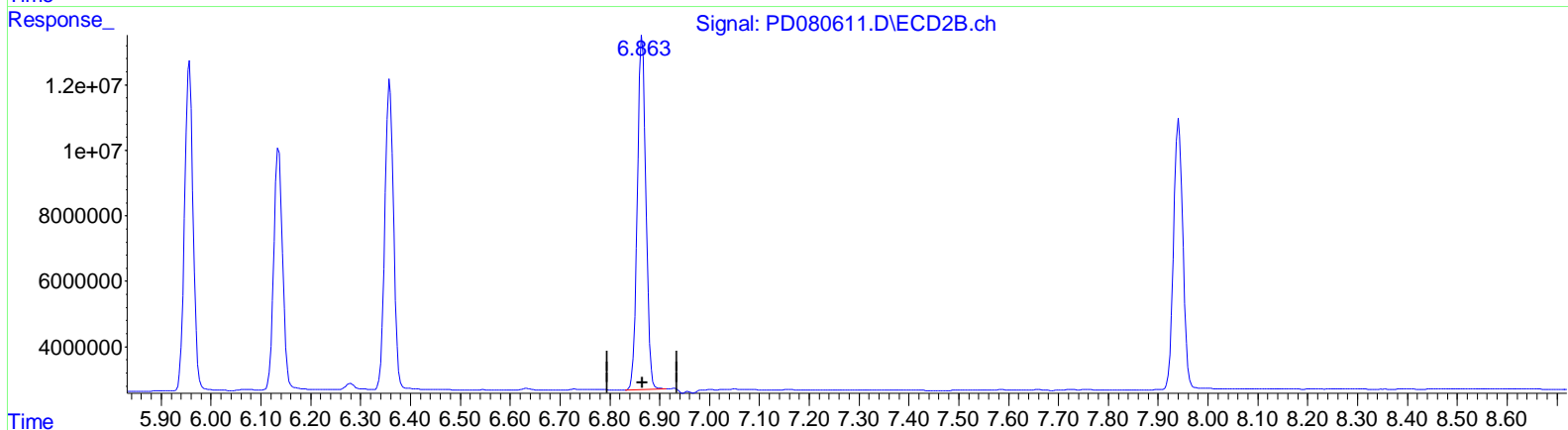
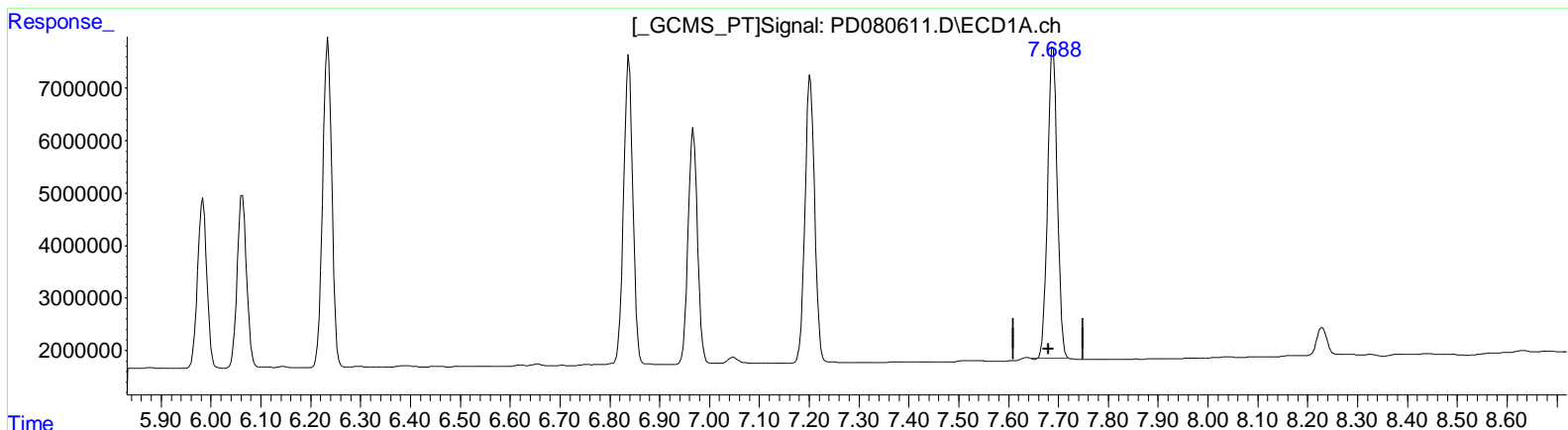


Data Path : Z:\pestpcbsrv\HPCHEM1\ECD_D\Data\PD123023\
 Data File : PD080611.D
 Signal (s) : Signal #1: ECD1A.ch Signal #2: ECD2B.ch
 Acq On : 29 Dec 2023 17:14
 Operator : ARVAJ
 Sample : INDB356
 Misc :
 ALS Vial : 7 Sample Multiplier: 1

Integration File signal 1: autoint1.e
 Integration File signal 2: autoint2.e
 Quant Time: Dec 30 01:20:15 2023
 Quant Method : Z:\pestpcbsrv\HPCHEM1\ECD_D\Method\PD121623CLP.M
 Quant Title : GC Extractables
 QLast Update : Thu Dec 21 13:52:23 2023
 Response via : Initial Calibration
 Integrator: ChemStation

Volume Inj. : 1 µl
 Signal #1 Phase : ZB-MR1 Signal #2 Phase: ZB-MR2
 Signal #1 Info : 30M x 0.32mm x 0.5 Signal #2 Info : 30M x 0.32mm x 0.25µm



QEdit

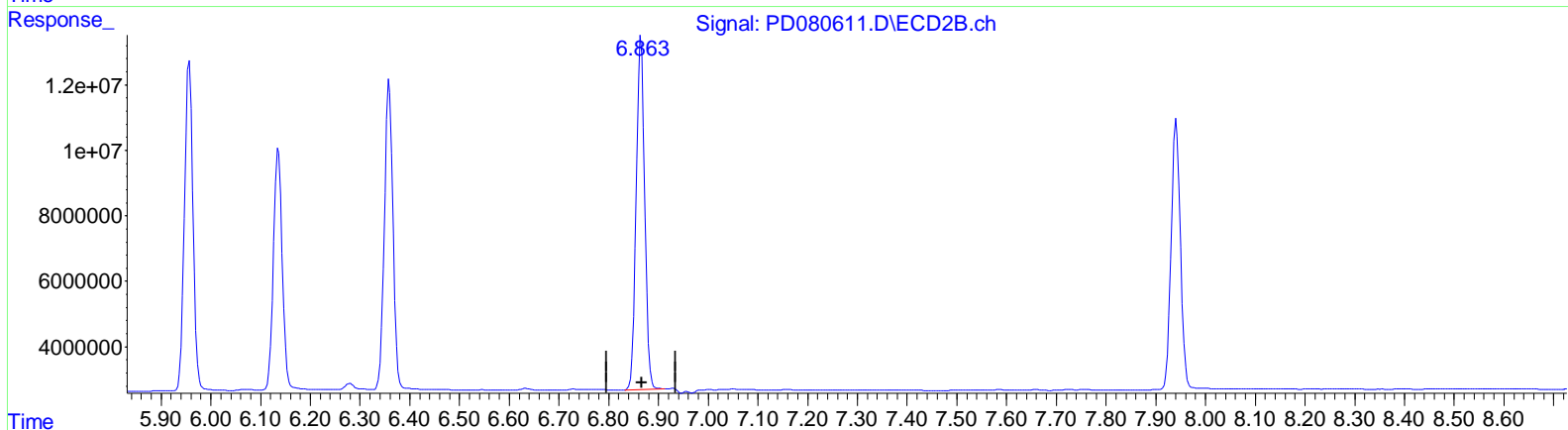
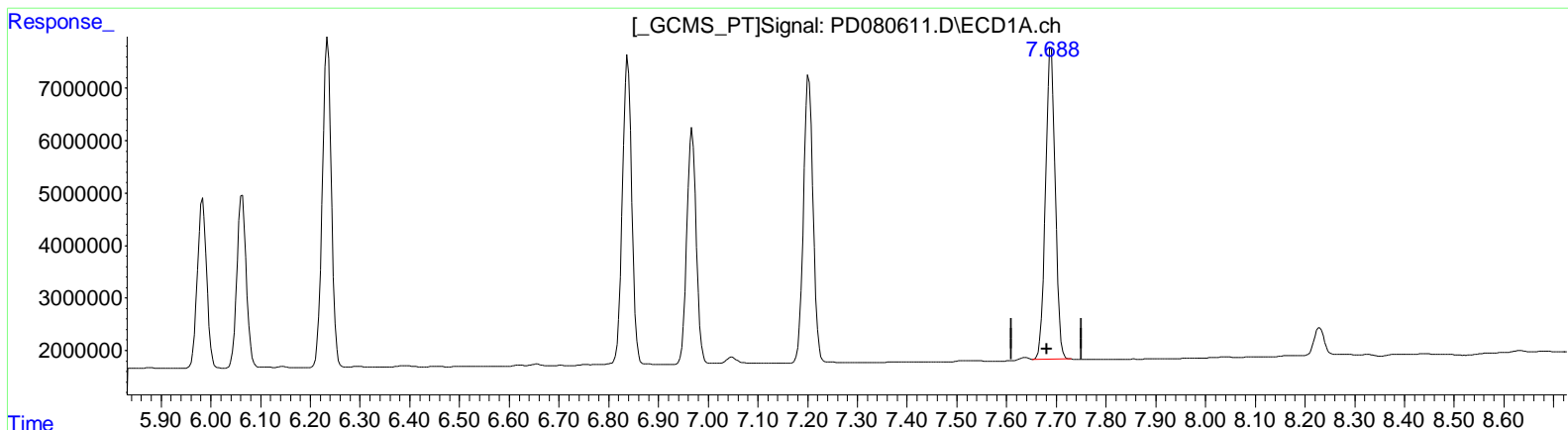
(21) Endrin ketone (B)
 7.689min 41.037 ng/ml
 response 79847256

(21) Endrin ketone #2 (B)
 6.865min 40.192 ng/ml
 response 128613276

Data Path : Z:\pestpcbsrv\HPCHEM1\ECD_D\Data\PD123023\
 Data File : PD080611.D
 Signal(s) : Signal #1: ECD1A.ch Signal #2: ECD2B.ch
 Acq On : 29 Dec 2023 17:14
 Operator : ARVAJ
 Sample : INDB356
 Misc :
 ALS Vial : 7 Sample Multiplier: 1

Integration File signal 1: autoint1.e
 Integration File signal 2: autoint2.e
 Quant Time: Dec 30 01:20:15 2023
 Quant Method : Z:\pestpcbsrv\HPCHEM1\ECD_D\Method\PD121623CLP.M
 Quant Title : GC Extractables
 QLast Update : Thu Dec 21 13:52:23 2023
 Response via : Initial Calibration
 Integrator: ChemStation

Volume Inj. : 1 µl
 Signal #1 Phase : ZB-MR1 Signal #2 Phase: ZB-MR2
 Signal #1 Info : 30M x 0.32mm x 0.5 Signal #2 Info : 30M x 0.32mm x 0.25µm



QEdit

(21) Endrin ketone (B)
 7.688min 41.477 ng/ml m
 response 80702274

(21) Endrin ketone #2 (B)
 6.865min 40.192 ng/ml
 response 128613276