

Data Path : Z:\pestpcbsrv\HPCHEM1\ECD_D\Data\PD101125\
 Data File : PD090547.D
 Signal(s) : Signal #1: ECD1A.ch Signal #2: ECD2B.ch
 Acq On : 09 Oct 2025 11:03
 Operator : AR\AJ
 Sample : HEXANE
 Misc :
 ALS Vial : 1 Sample Multiplier: 1

Instrument :
 ECD_D
 ClientSampleId :
 HEXANE

Integration File signal 1: autoint1.e
 Integration File signal 2: autoint2.e
 Quant Time: Oct 10 08:22:20 2025
 Quant Method : Z:\pestpcbsrv\HPCHEM1\ECD_D\Method\PD091825.M
 Quant Title : GC Extractables
 QLast Update : Fri Sep 19 05:52:38 2025
 Response via : Initial Calibration
 Integrator: ChemStation

Volume Inj. : 1 µl
 Signal #1 Phase : ZB-MR2 Signal #2 Phase: ZB-MR2
 Signal #1 Info : 30M x 0.32mm x0.5 Signal #2 Info : 30M x 0.32mm x 0.25µm

Compound	RT#1	RT#2	Resp#1	Resp#2	ng/ml	ng/ml

System Monitoring Compounds						
1) SA Tetrachlo...	3.576f	2.908f	1105408	21869857	0.340	0.797 #
28) SA Decachlor...	0.000	8.056	0	12835539	N.D.	0.396 #
Target Compounds						
2) A alpha-BHC	0.000	3.376	0	117296	N.D.	0.003 #
3) MA gamma-BHC...	4.343f	3.733	120850	346984	0.018	0.009 #
4) MA Heptachlor	4.913	4.077	385587	2684572	0.058	0.066
5) MB Aldrin	5.257	4.365	150638	15041141	0.024	0.377 #
7) B delta-BHC	4.781f	4.247	3562936	1044529	0.552	0.025 #
8) B Heptachlo...	5.683	4.871	12885286	5274450	2.255	0.143 #
9) A Endosulfan I	0.000	5.216f	0	28663321	N.D.	0.828 #
10) B gamma-Chl...	5.931	5.116	651716	16315864	0.114	0.415 #
11) B alpha-Chl...	6.002f	5.188	5847493	50872515	1.015	1.351 #
12) B 4,4'-DDE	0.000	5.365	0	14403041	N.D.	0.376 #
14) MA Endrin	0.000	5.785	0	106.2E6	N.D.	2.965 #
15) B Endosulfa...	6.778	6.080	9234332	7005101	1.893	0.208 #
16) A 4,4'-DDD	6.732f	5.923	22339075	140013	5.451	0.004 #
17) MA 4,4'-DDT	0.000	6.176	0	9957440	N.D.	0.290 #
18) B Endrin al...	6.916	6.253	7626723	1496080	2.223	0.064 #
20) A Methoxychlor	7.493	0.000	1081247	0	0.459	N.D. #
22) Mirex	8.122	7.167	1683089	6772805	0.454	0.245 #
23) Chlordane-1	0.000	3.896	0	669044	N.D.	0.556 #
24) Chlordane-2	5.224	4.488	39766	134.6E6	0.185	107.647 #
25) Chlordane-3	5.931	5.116	651716	16315864	0.779	4.304 #
26) Chlordane-4	6.002f	5.188	5847493	50872515	5.730	15.624 #
27) Chlordane-5	6.865	6.080	7937783	7005101	44.586	4.616 #

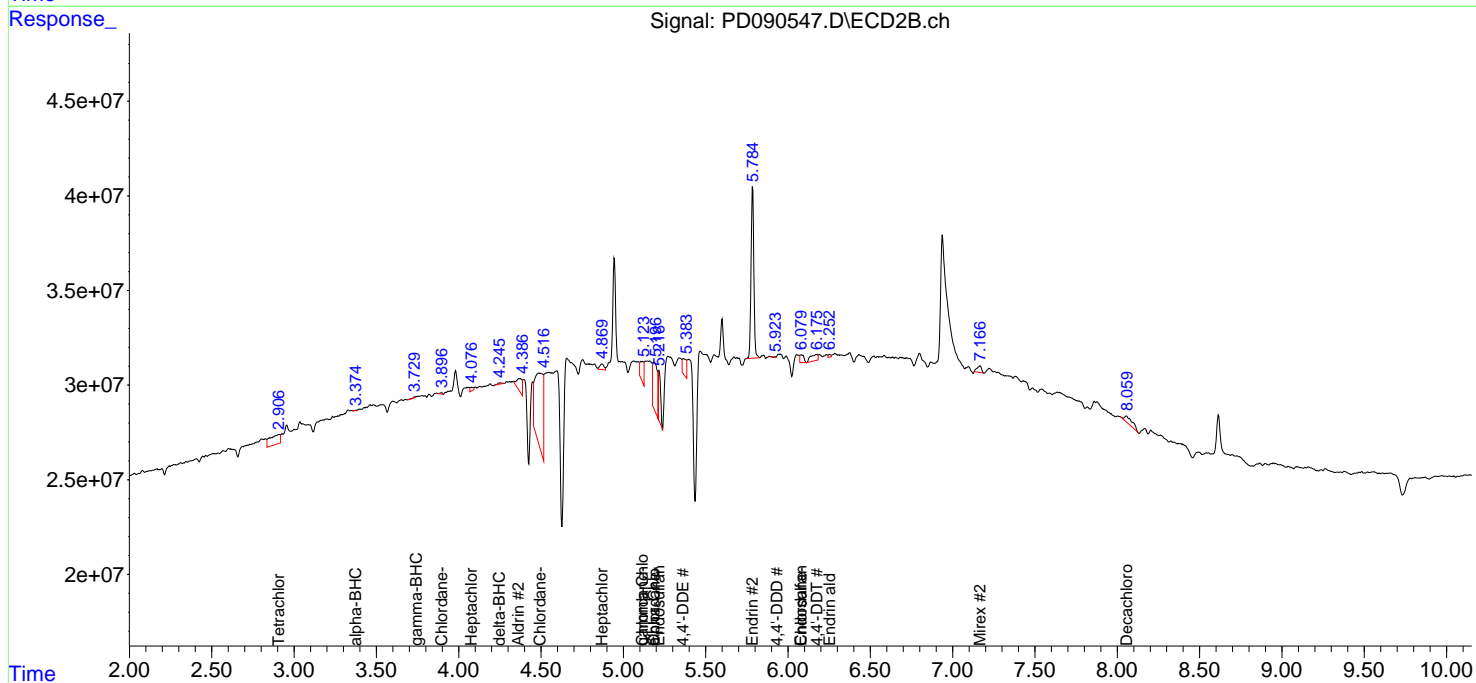
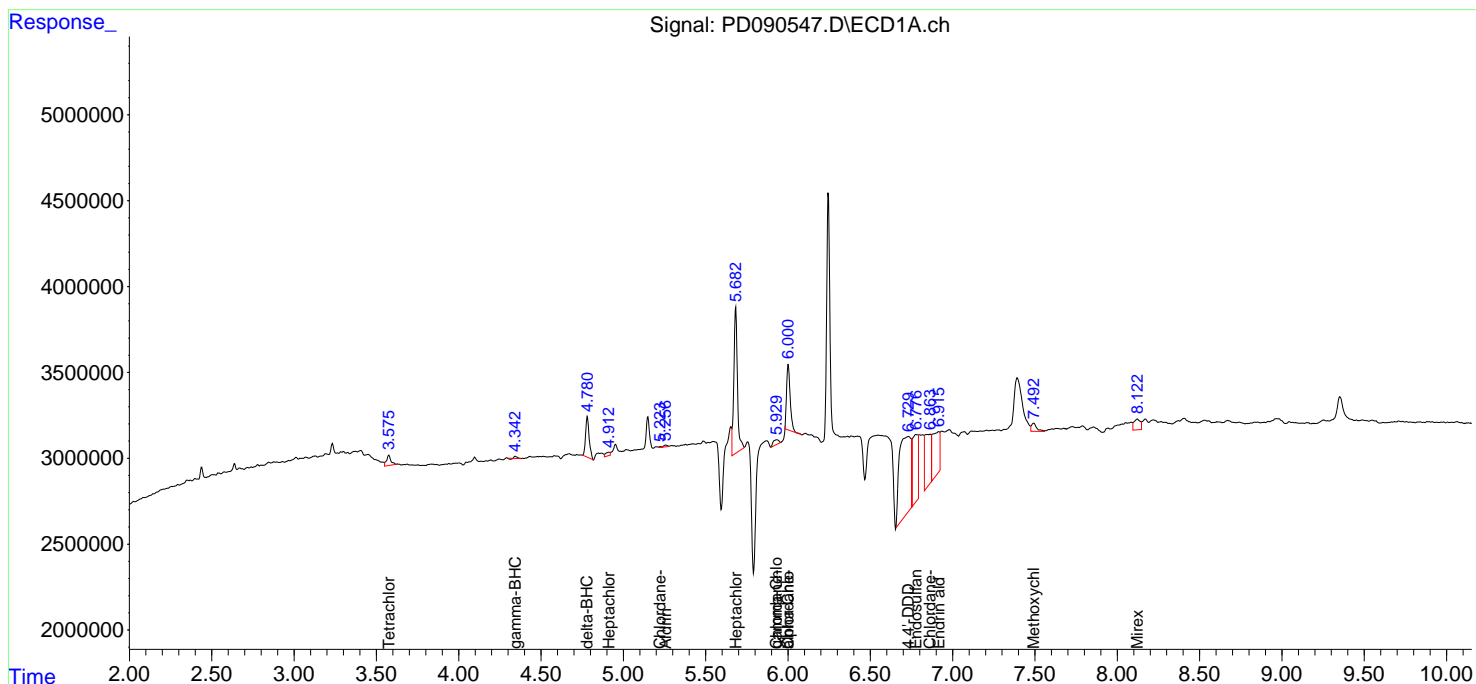
(f)=RT Delta > 1/2 Window (#)=Amounts differ by > 25% (m)=manual int.

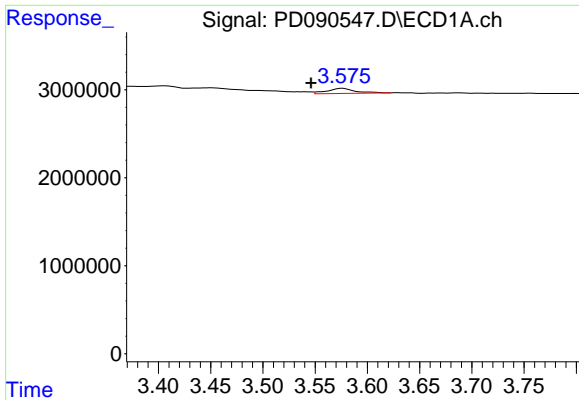
Data Path : Z:\pestpcbsrv\HPCHEM1\ECD_D\Data\PD101125\
 Data File : PD090547.D
 Signal(s) : Signal #1: ECD1A.ch Signal #2: ECD2B.ch
 Acq On : 09 Oct 2025 11:03
 Operator : AR\AJ
 Sample : HEXANE
 Misc :
 ALS Vial : 1 Sample Multiplier: 1

Instrument :
 ECD_D
 ClientSampleId :
 HEXANE

Integration File signal 1: autoint1.e
 Integration File signal 2: autoint2.e
 Quant Time: Oct 10 08:22:20 2025
 Quant Method : Z:\pestpcbsrv\HPCHEM1\ECD_D\Method\PD091825.M
 Quant Title : GC Extractables
 QLast Update : Fri Sep 19 05:52:38 2025
 Response via : Initial Calibration
 Integrator: ChemStation

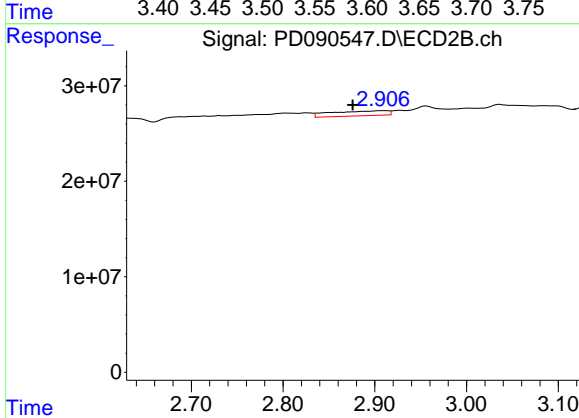
Volume Inj. : 1 µl
 Signal #1 Phase : ZB-MR1 Signal #2 Phase: ZB-MR2
 Signal #1 Info : 30M x 0.32mm x0.5 Signal #2 Info : 30M x 0.32mm x 0.25µm



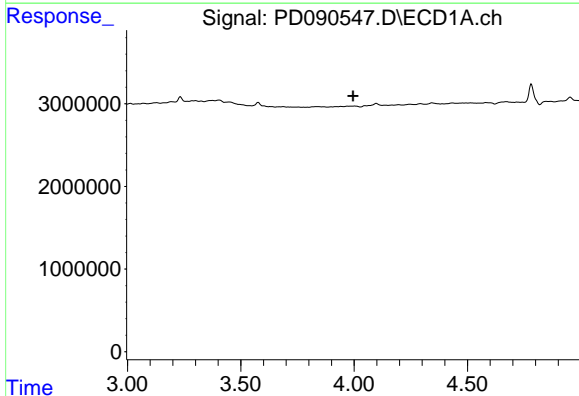


#1 Tetrachloro-m-xylene
 R.T.: 3.576 min
 Delta R.T.: 0.030 min
 Response: 1105408
 Conc: 0.34 ng/ml

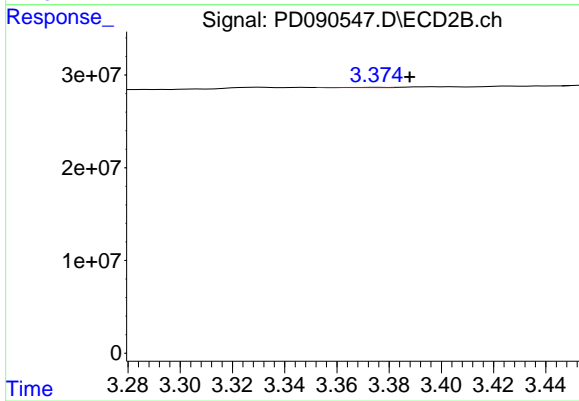
Instrument :
 ECD_D
 ClientSampleId :
 HEXANE



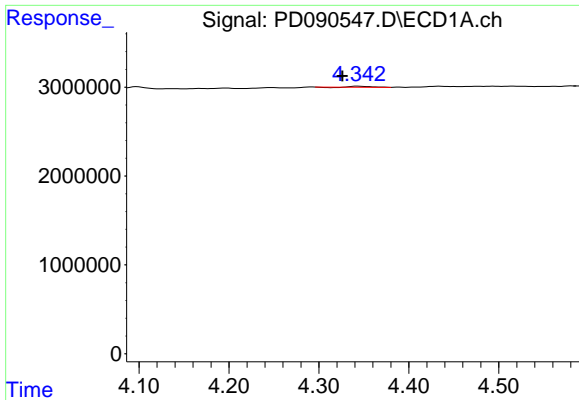
#1 Tetrachloro-m-xylene
 R.T.: 2.908 min
 Delta R.T.: 0.032 min
 Response: 21869857
 Conc: 0.80 ng/ml



#2 alpha-BHC
 R.T.: 0.000 min
 Exp R.T. : 3.995 min
 Response: 0
 Conc: N.D.



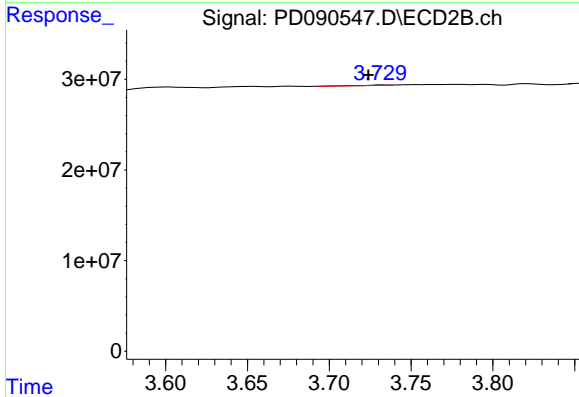
#2 alpha-BHC
 R.T.: 3.376 min
 Delta R.T.: -0.012 min
 Response: 117296
 Conc: 0.00 ng/ml



#3 gamma-BHC (Lindane)

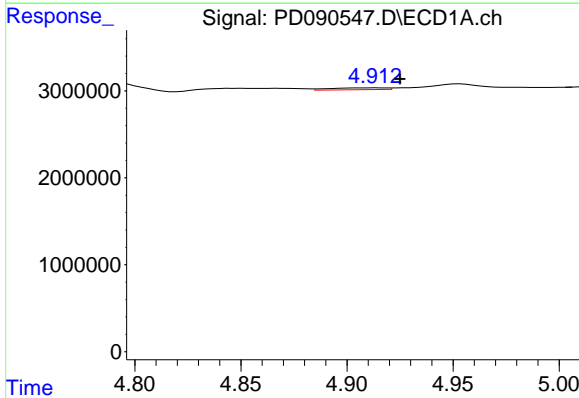
R.T.: 4.343 min
 Delta R.T.: 0.017 min
 Response: 120850
 Conc: 0.02 ng/ml

Instrument :
 ECD_D
 ClientSampleId :
 HEXANE



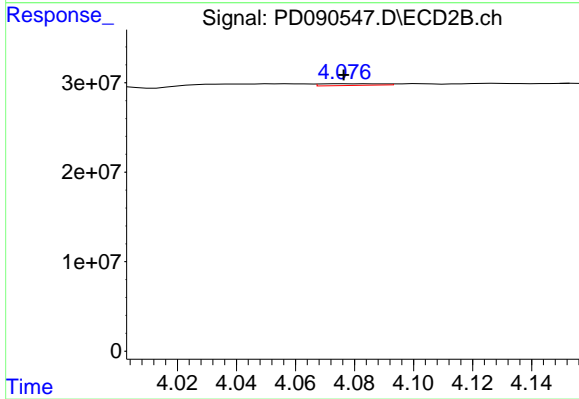
#3 gamma-BHC (Lindane)

R.T.: 3.733 min
 Delta R.T.: 0.009 min
 Response: 346984
 Conc: 0.01 ng/ml



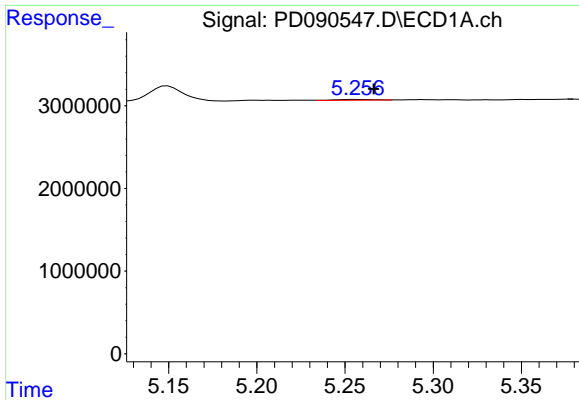
#4 Heptachlor

R.T.: 4.913 min
 Delta R.T.: -0.012 min
 Response: 385587
 Conc: 0.06 ng/ml



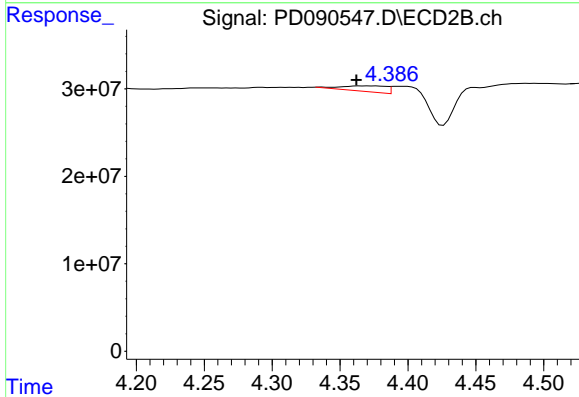
#4 Heptachlor

R.T.: 4.077 min
 Delta R.T.: 0.000 min
 Response: 2684572
 Conc: 0.07 ng/ml

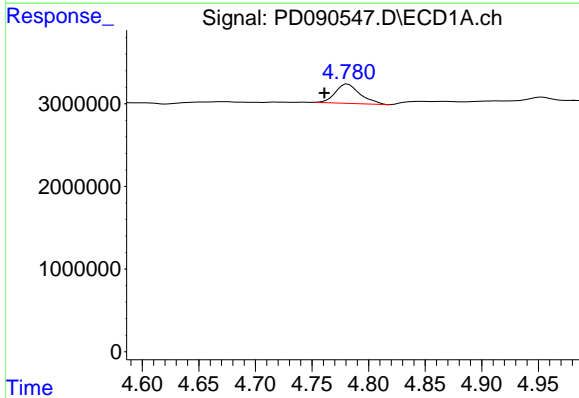


#5 Aldrin
 R.T.: 5.257 min
 Delta R.T.: -0.009 min
 Response: 150638
 Conc: 0.02 ng/ml

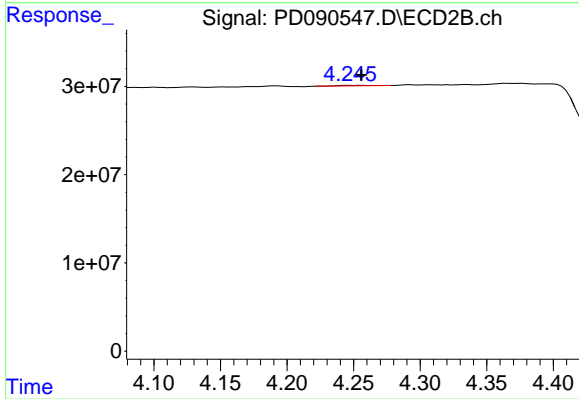
Instrument :
 ECD_D
 ClientSampleId :
 HEXANE



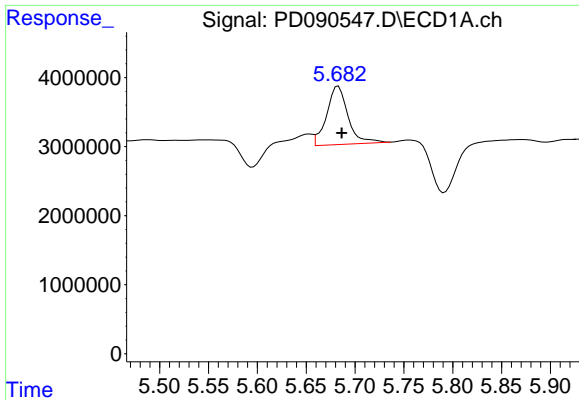
#5 Aldrin
 R.T.: 4.365 min
 Delta R.T.: 0.003 min
 Response: 15041141
 Conc: 0.38 ng/ml



#7 delta-BHC
 R.T.: 4.781 min
 Delta R.T.: 0.020 min
 Response: 3562936
 Conc: 0.55 ng/ml

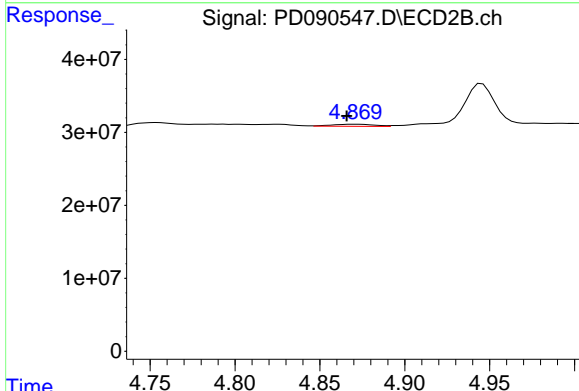


#7 delta-BHC
 R.T.: 4.247 min
 Delta R.T.: -0.009 min
 Response: 1044529
 Conc: 0.03 ng/ml

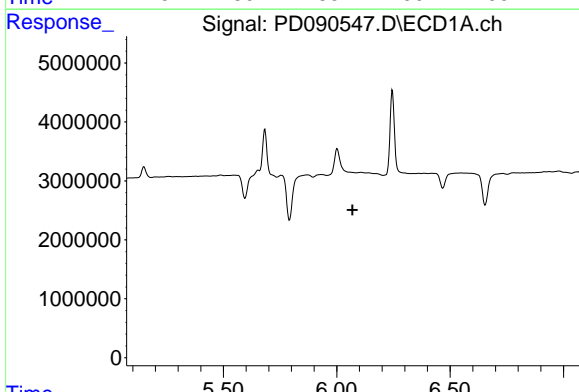


#8 Heptachlor epoxide
 R.T.: 5.683 min
 Delta R.T.: -0.003 min
 Response: 12885286
 Conc: 2.25 ng/ml

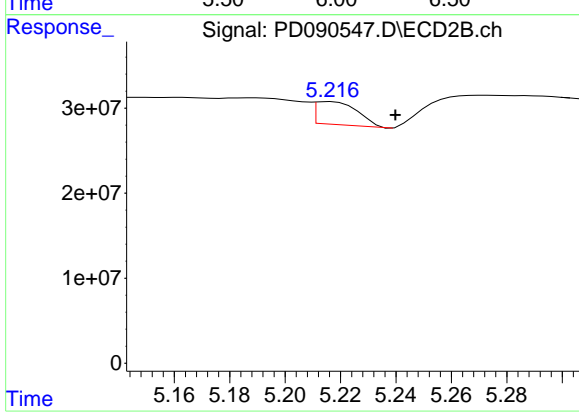
Instrument : ECD_D
 ClientSampleId : HEXANE



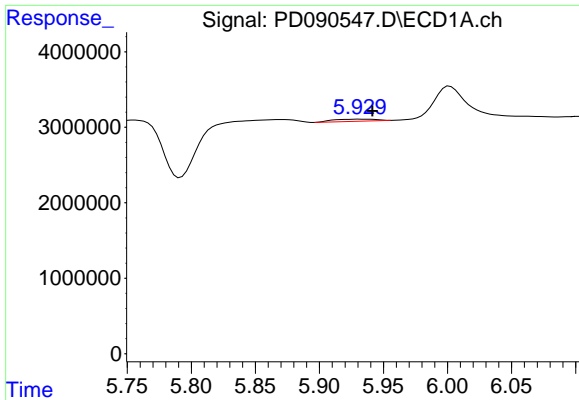
#8 Heptachlor epoxide
 R.T.: 4.871 min
 Delta R.T.: 0.005 min
 Response: 5274450
 Conc: 0.14 ng/ml



#9 Endosulfan I
 R.T.: 0.000 min
 Exp R.T. : 6.070 min
 Response: 0
 Conc: N.D.



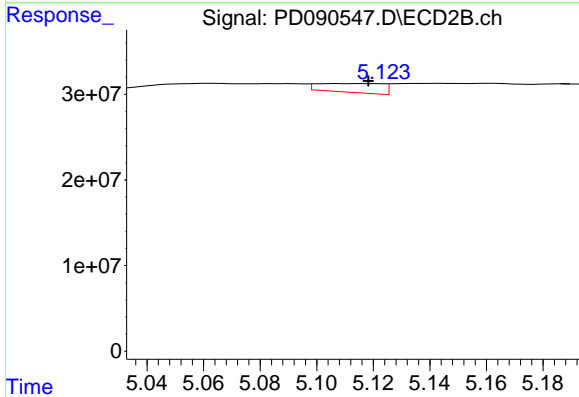
#9 Endosulfan I
 R.T.: 5.216 min
 Delta R.T.: -0.023 min
 Response: 28663321
 Conc: 0.83 ng/ml



#10 gamma-Chlordane

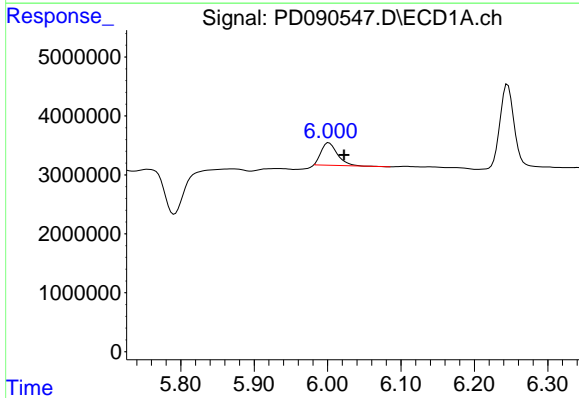
R.T.: 5.931 min
 Delta R.T.: -0.010 min
 Response: 651716
 Conc: 0.11 ng/ml

Instrument :
 ECD_D
 ClientSampleId :
 HEXANE



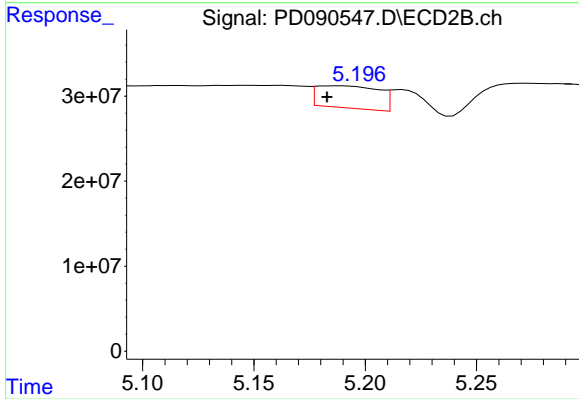
#10 gamma-Chlordane

R.T.: 5.116 min
 Delta R.T.: -0.002 min
 Response: 16315864
 Conc: 0.42 ng/ml



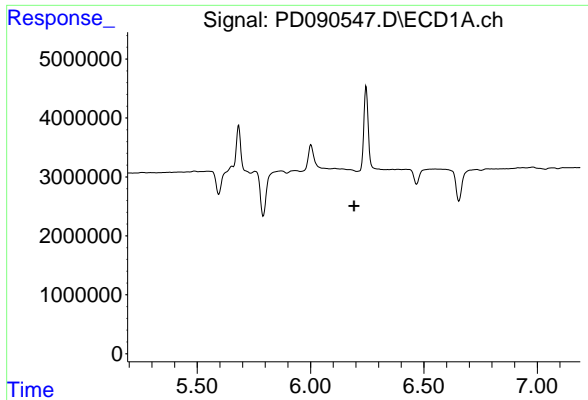
#11 alpha-Chlordane

R.T.: 6.002 min
 Delta R.T.: -0.020 min
 Response: 5847493
 Conc: 1.02 ng/ml



#11 alpha-Chlordane

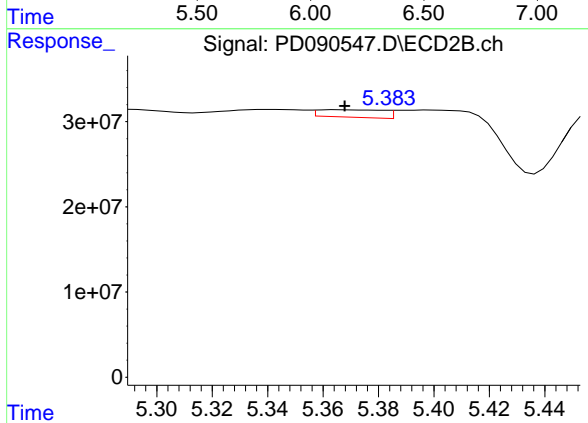
R.T.: 5.188 min
 Delta R.T.: 0.005 min
 Response: 50872515
 Conc: 1.35 ng/ml



#12 4,4'-DDE

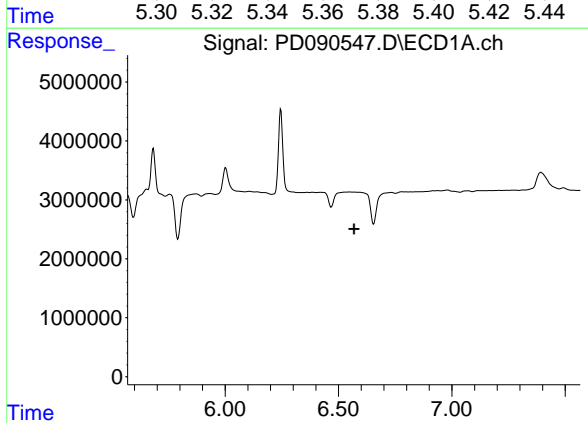
R.T.: 0.000 min
 Exp R.T. : 6.192 min
 Response: 0
 Conc: N.D.

Instrument :
 ECD_D
 ClientSampleId :
 HEXANE



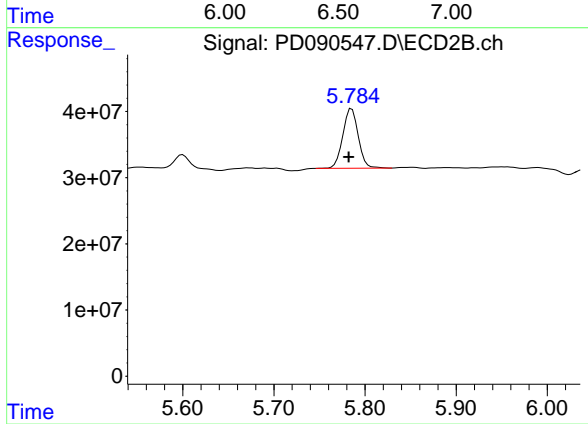
#12 4,4'-DDE

R.T.: 5.365 min
 Delta R.T.: -0.003 min
 Response: 14403041
 Conc: 0.38 ng/ml



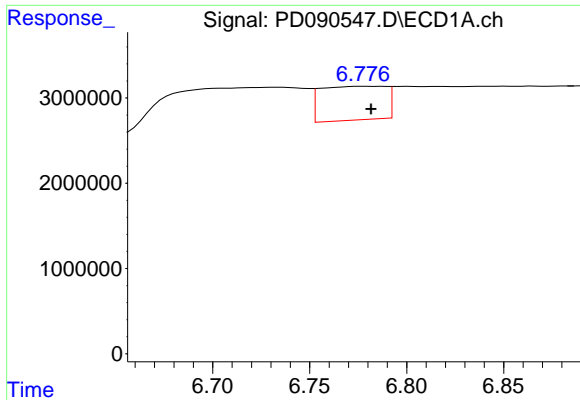
#14 Endrin

R.T.: 0.000 min
 Exp R.T. : 6.569 min
 Response: 0
 Conc: N.D.



#14 Endrin

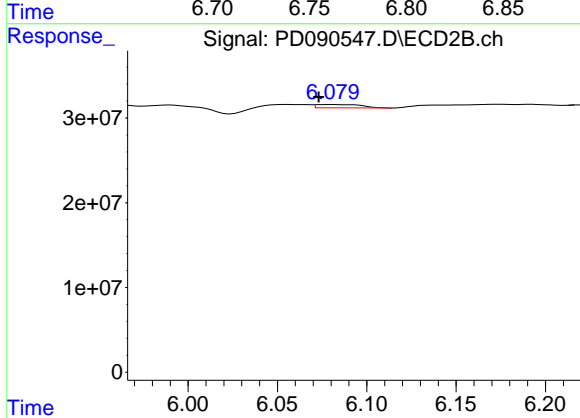
R.T.: 5.785 min
 Delta R.T.: 0.003 min
 Response: 106235650
 Conc: 2.96 ng/ml



#15 Endosulfan II

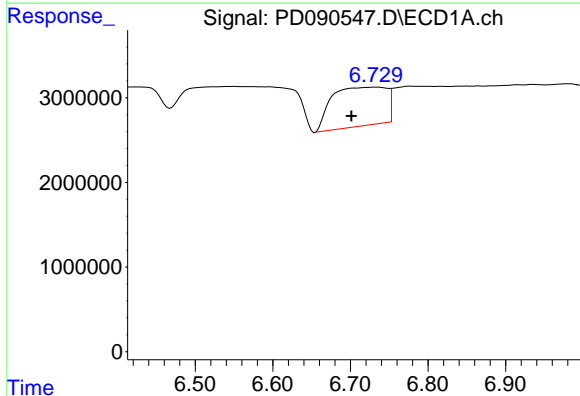
R.T.: 6.778 min
 Delta R.T.: -0.003 min
 Response: 9234332
 Conc: 1.89 ng/ml

Instrument :
 ECD_D
 ClientSampleId :
 HEXANE



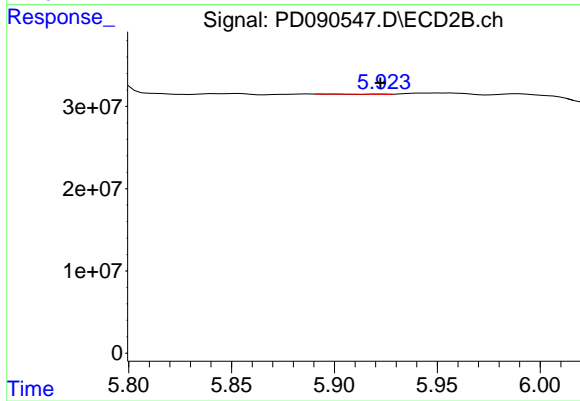
#15 Endosulfan II

R.T.: 6.080 min
 Delta R.T.: 0.007 min
 Response: 7005101
 Conc: 0.21 ng/ml



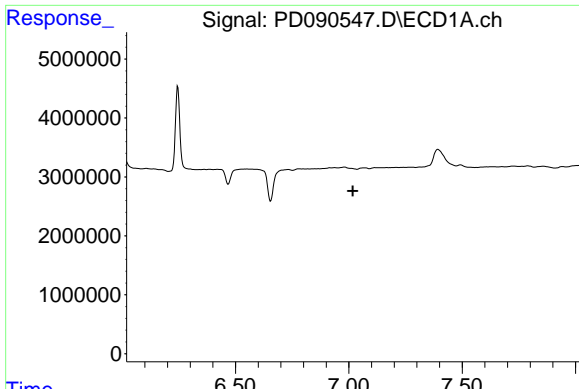
#16 4,4'-DDD

R.T.: 6.732 min
 Delta R.T.: 0.031 min
 Response: 22339075
 Conc: 5.45 ng/ml



#16 4,4'-DDD

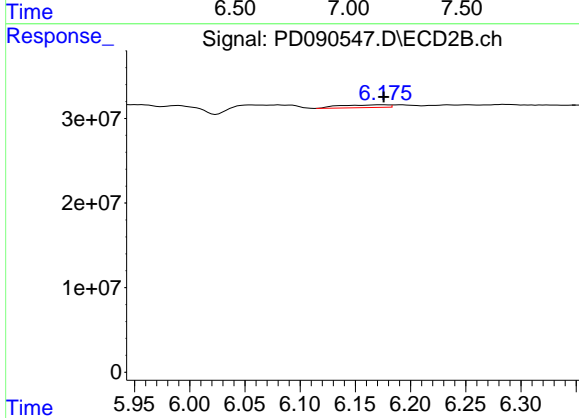
R.T.: 5.923 min
 Delta R.T.: 0.001 min
 Response: 140013
 Conc: 0.00 ng/ml



#17 4,4'-DDT

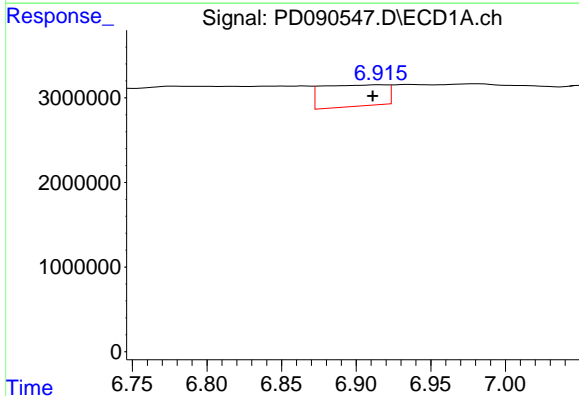
R.T.: 0.000 min
 Exp R.T.: 7.017 min
 Response: 0
 Conc: N.D.

Instrument :
 ECD_D
 ClientSampleId :
 HEXANE



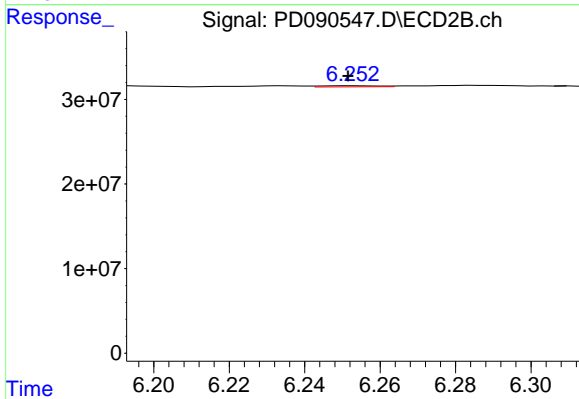
#17 4,4'-DDT

R.T.: 6.176 min
 Delta R.T.: 0.000 min
 Response: 9957440
 Conc: 0.29 ng/ml



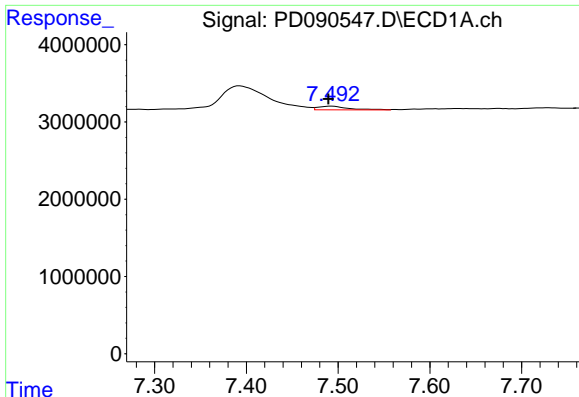
#18 Endrin aldehyde

R.T.: 6.916 min
 Delta R.T.: 0.005 min
 Response: 7626723
 Conc: 2.22 ng/ml



#18 Endrin aldehyde

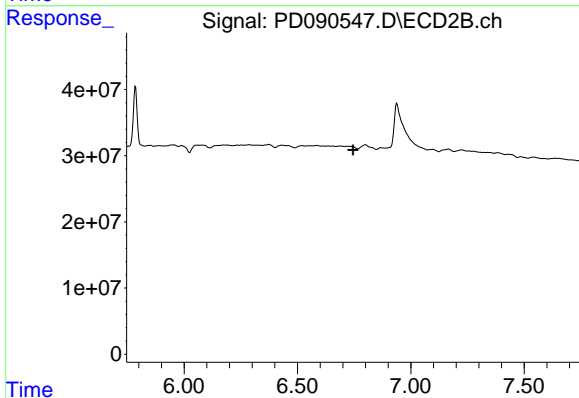
R.T.: 6.253 min
 Delta R.T.: 0.002 min
 Response: 1496080
 Conc: 0.06 ng/ml



#20 Methoxychlor

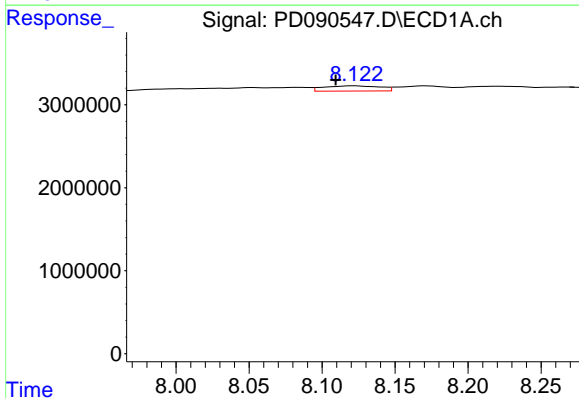
R.T.: 7.493 min
 Delta R.T.: 0.004 min
 Response: 1081247
 Conc: 0.46 ng/ml

Instrument :
 ECD_D
 ClientSampleId :
 HEXANE



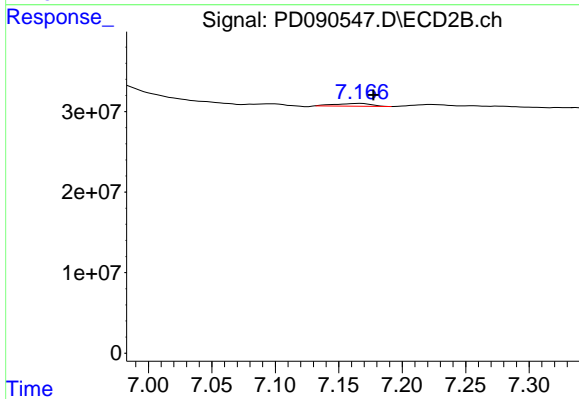
#20 Methoxychlor

R.T.: 0.000 min
 Exp R.T. : 6.746 min
 Response: 0
 Conc: N.D.



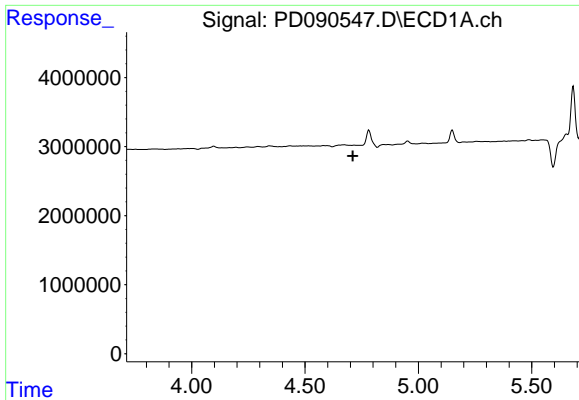
#22 Mirex

R.T.: 8.122 min
 Delta R.T.: 0.013 min
 Response: 1683089
 Conc: 0.45 ng/ml



#22 Mirex

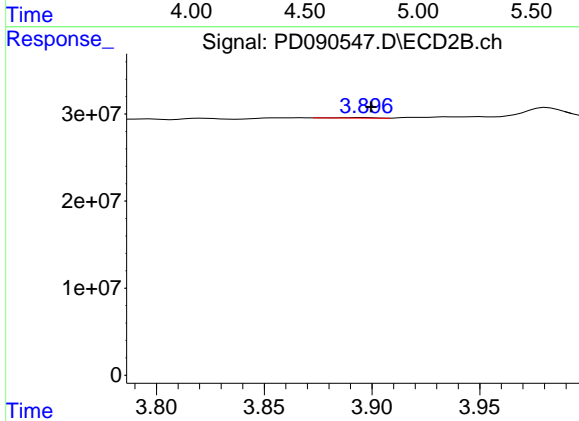
R.T.: 7.167 min
 Delta R.T.: -0.010 min
 Response: 6772805
 Conc: 0.25 ng/ml



#23 Chlordane-1

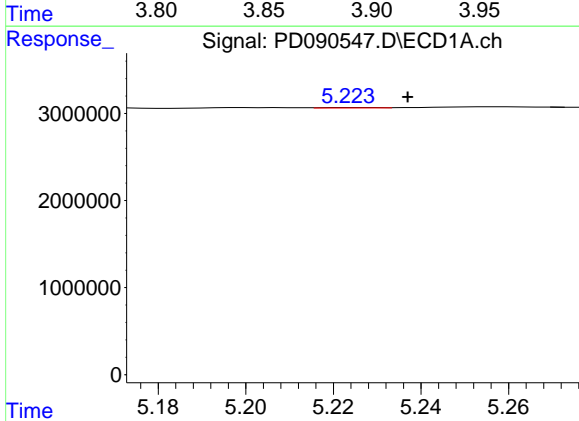
R.T.: 0.000 min
 Exp R.T.: 4.710 min
 Response: 0
 Conc: N.D.

Instrument :
 ECD_D
 ClientSampleId :
 HEXANE



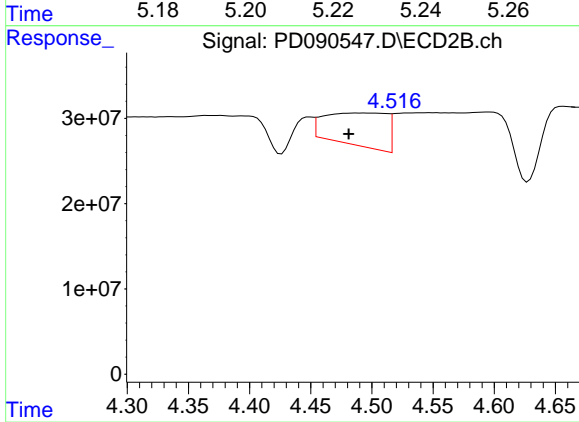
#23 Chlordane-1

R.T.: 3.896 min
 Delta R.T.: -0.003 min
 Response: 669044
 Conc: 0.56 ng/ml



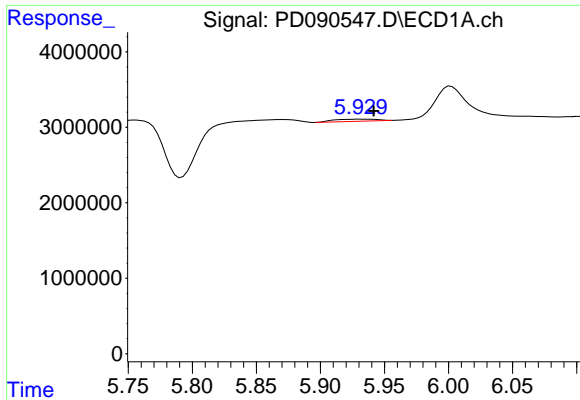
#24 Chlordane-2

R.T.: 5.224 min
 Delta R.T.: -0.013 min
 Response: 39766
 Conc: 0.19 ng/ml



#24 Chlordane-2

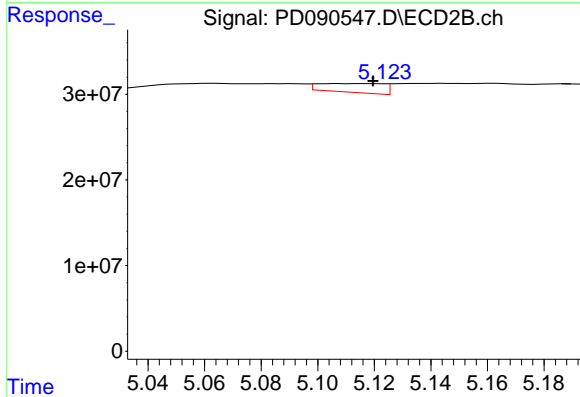
R.T.: 4.488 min
 Delta R.T.: 0.006 min
 Response: 134609249
 Conc: 107.65 ng/ml



#25 Chlordane-3

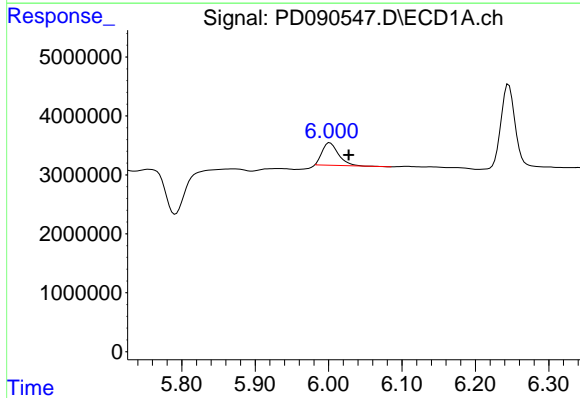
R.T.: 5.931 min
 Delta R.T.: -0.011 min
 Response: 651716
 Conc: 0.78 ng/ml

Instrument :
 ECD_D
 ClientSampleId :
 HEXANE



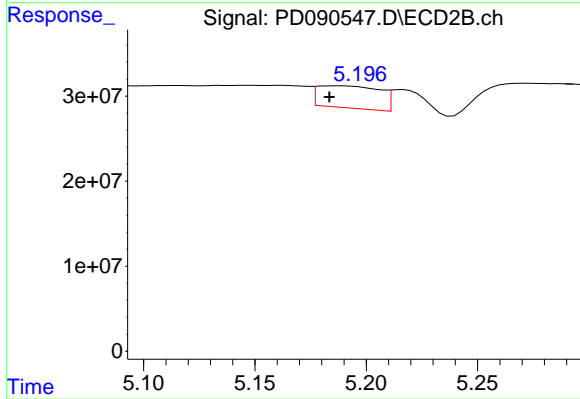
#25 Chlordane-3

R.T.: 5.116 min
 Delta R.T.: -0.003 min
 Response: 16315864
 Conc: 4.30 ng/ml



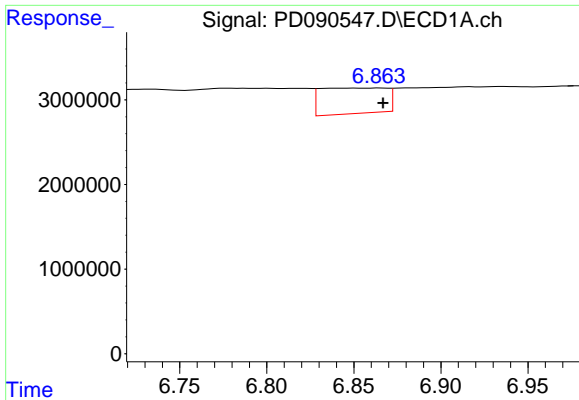
#26 Chlordane-4

R.T.: 6.002 min
 Delta R.T.: -0.025 min
 Response: 5847493
 Conc: 5.73 ng/ml



#26 Chlordane-4

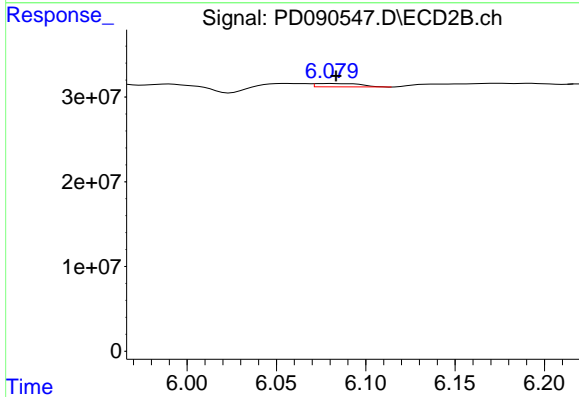
R.T.: 5.188 min
 Delta R.T.: 0.005 min
 Response: 50872515
 Conc: 15.62 ng/ml



#27 Chlordane-5

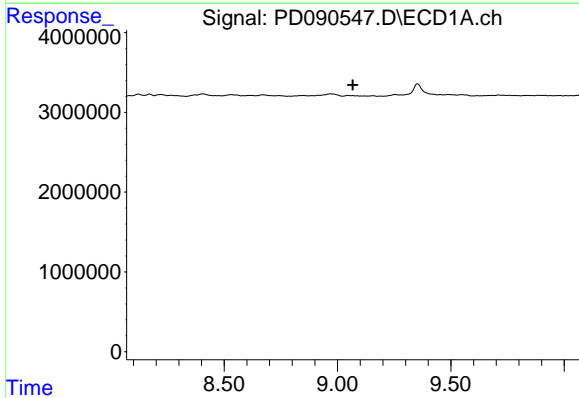
R.T.: 6.865 min
 Delta R.T.: -0.002 min
 Response: 7937783
 Conc: 44.59 ng/ml

Instrument :
 ECD_D
 ClientSampleId :
 HEXANE



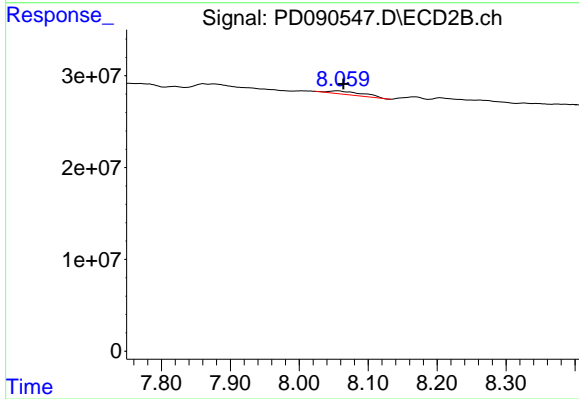
#27 Chlordane-5

R.T.: 6.080 min
 Delta R.T.: -0.003 min
 Response: 7005101
 Conc: 4.62 ng/ml



#28 Decachlorobiphenyl

R.T.: 0.000 min
 Exp R.T. : 9.068 min
 Response: 0
 Conc: N.D.



#28 Decachlorobiphenyl

R.T.: 8.056 min
 Delta R.T.: -0.008 min
 Response: 12835539
 Conc: 0.40 ng/ml