

Data Path : Z:\pestpcbsrv\HPCHEM1\ECD_D\Data\PD101125\
 Data File : PD090552.D
 Signal(s) : Signal #1: ECD1A.ch Signal #2: ECD2B.ch
 Acq On : 09 Oct 2025 16:20
 Operator : AR\AJ
 Sample : PB170043BS
 Misc :
 ALS Vial : 6 Sample Multiplier: 1

Instrument :
 ECD_D
 ClientSampleId :
 PB170043BS

Integration File signal 1: autoint1.e
 Integration File signal 2: autoint2.e
 Quant Time: Oct 10 08:24:30 2025
 Quant Method : Z:\pestpcbsrv\HPCHEM1\ECD_D\Method\PD091825.M
 Quant Title : GC Extractables
 QLast Update : Fri Sep 19 05:52:38 2025
 Response via : Initial Calibration
 Integrator: ChemStation

Volume Inj. : 1 µl
 Signal #1 Phase : ZB-MR1 Signal #2 Phase: ZB-MR2
 Signal #1 Info : 30M x 0.32mm x0.5 Signal #2 Info : 30M x 0.32mm x 0.25µm

	Compound	RT#1	RT#2	Resp#1	Resp#2	ng/ml	ng/ml

System Monitoring Compounds							
1)	SA Tetrachlo...	3.545	2.875	54037556	493.0E6	16.625	17.962
28)	SA Decachlor...	9.063	8.060	87274611	598.3E6	18.088	18.456
Target Compounds							
2)	A alpha-BHC	3.994	3.387	316.8E6	2070.6E6	45.351	47.293
3)	MA gamma-BHC...	4.325	3.723	300.8E6	1922.1E6	45.464	47.185
4)	MA Heptachlor	4.923	4.075	302.3E6	1902.3E6	45.710	46.720
5)	MB Aldrin	5.264	4.360	290.9E6	1888.8E6	45.809	47.297
6)	B beta-BHC	4.511	4.018	114.6E6	821.3E6	44.420	47.375
7)	B delta-BHC	4.760	4.254	16123947	1964.9E6	2.497	47.582 #
8)	B Heptachlo...	5.684	4.863	262.8E6	1737.3E6	45.991	47.125
9)	A Endosulfan I	6.067	5.237	234.9E6	1583.3E6	43.481	45.753
10)	B gamma-Chl...	5.939	5.116	261.3E6	1859.7E6	45.741	47.337
11)	B alpha-Chl...	6.020	5.180	260.7E6	1779.2E6	45.252	47.237
12)	B 4,4'-DDE	6.189	5.365	239.4E6	1828.3E6	45.975	47.763
13)	MA Dieldrin	6.340	5.503	265.9E6	1841.4E6	46.125	47.281
14)	MA Endrin	6.567	5.779	228.2E6	1743.0E6	46.622	48.643
15)	B Endosulfa...	6.780	6.071	231.3E6	1599.7E6	47.416	47.399
16)	A 4,4'-DDD	6.699	5.919	192.8E6	1543.7E6	47.061	47.605
17)	MA 4,4'-DDT	7.015	6.173	205.3E6	1600.5E6	46.109	46.554
18)	B Endrin al...	6.909	6.249	172.8E6	1212.4E6	50.375	51.487
19)	B Endosulfa...	7.143	6.472	210.7E6	1549.6E6	45.801	47.404
20)	A Methoxychlor	7.487	6.744	105.9E6	795.4E6	44.951	45.710
21)	B Endrin ke...	7.624	6.981	225.5E6	1591.2E6	45.574	44.073
22)	Mirex	8.106	7.174	160.6E6	1244.6E6	43.339	45.084
23)	Chlordane-1	0.000	3.892	0	1240733	N.D.	1.031 #
24)	Chlordane-2	5.264f	4.498	290.9E6	28848608	1355.513	23.070 #
25)	Chlordane-3	5.939	5.116	261.3E6	1859.7E6	312.145	490.612 #
26)	Chlordane-4	6.020	5.180	260.7E6	1779.2E6	255.445	546.433 #
27)	Chlordane-5	0.000	6.071	0	1599.7E6	N.D.	1054.120 #

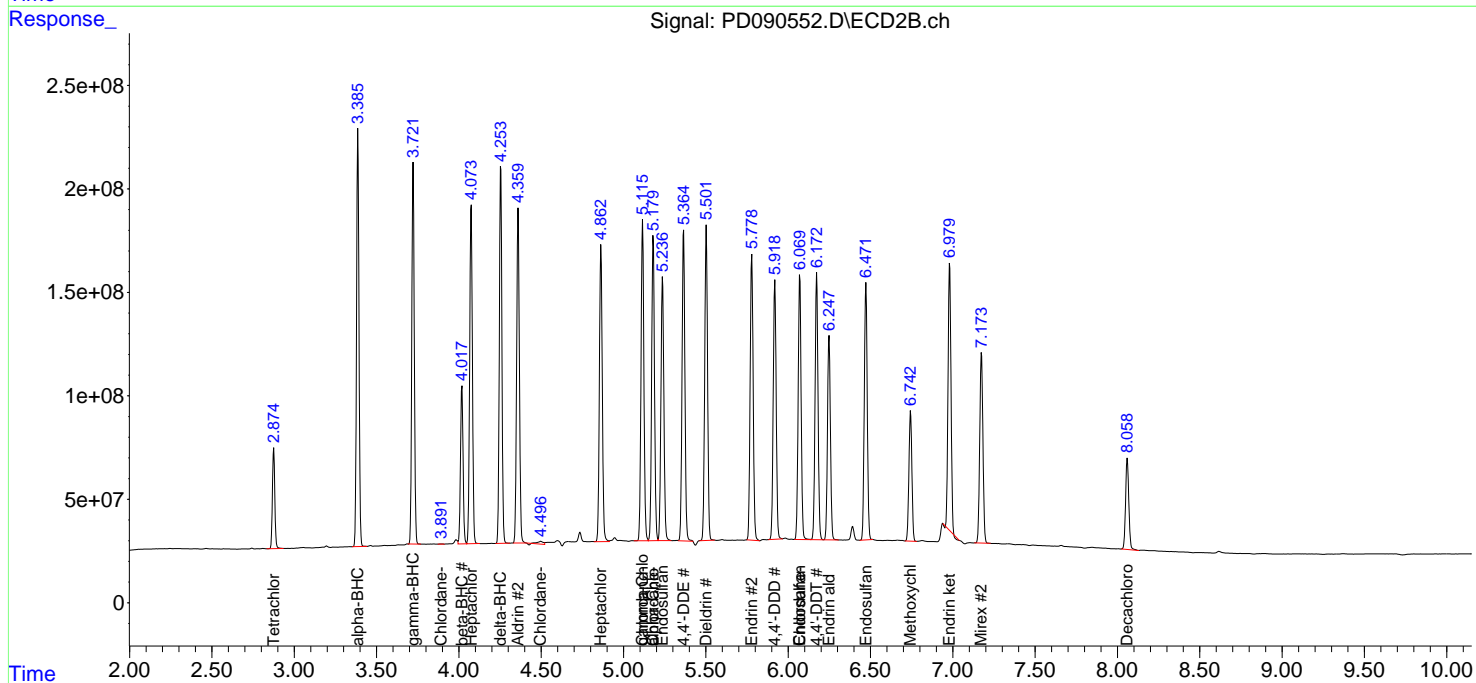
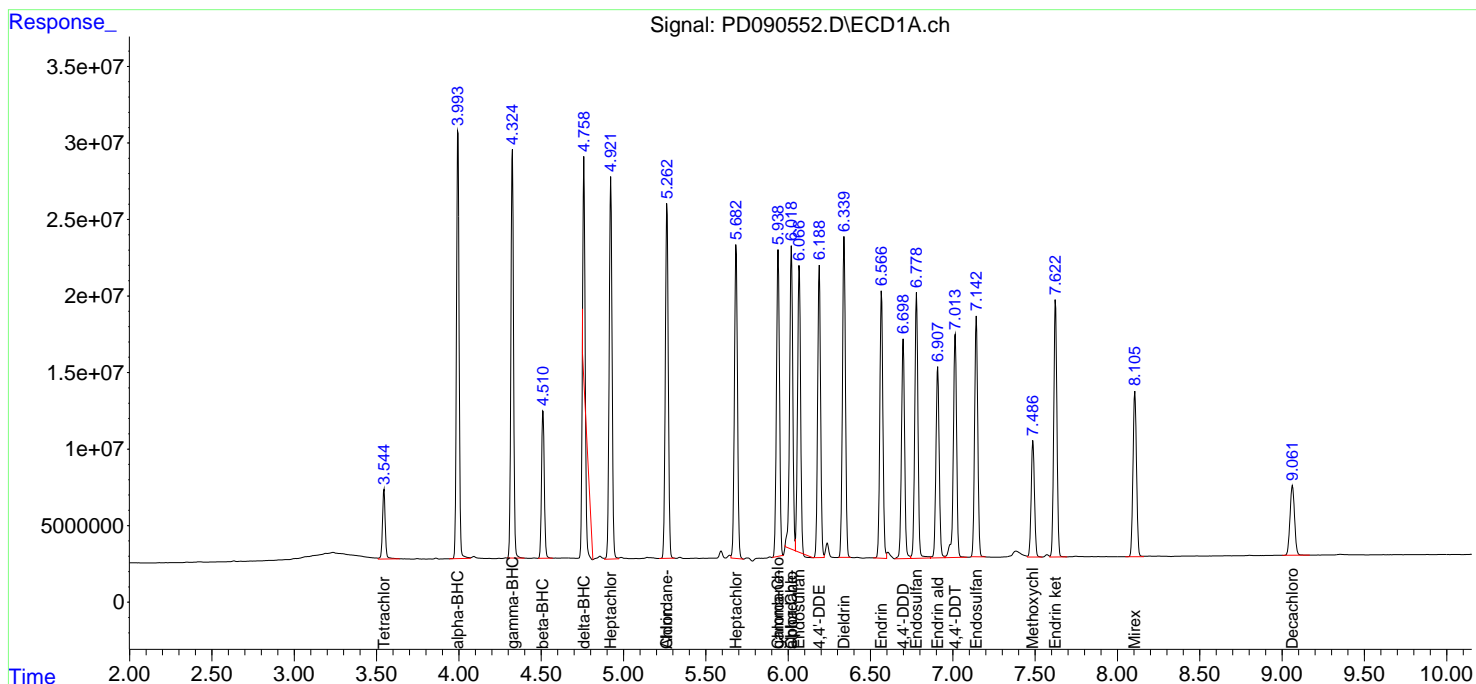
(f)=RT Delta > 1/2 Window (#)=Amounts differ by > 25% (m)=manual int.

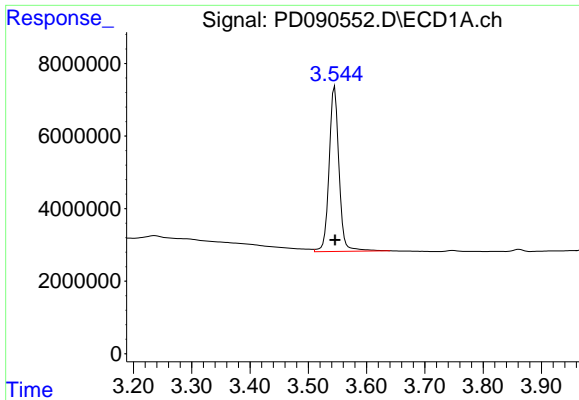
Data Path : Z:\pestpcbsrv\HPCHEM1\ECD_D\Data\PD101125\
 Data File : PD090552.D
 Signal(s) : Signal #1: ECD1A.ch Signal #2: ECD2B.ch
 Acq On : 09 Oct 2025 16:20
 Operator : AR\AJ
 Sample : PB170043BS
 Misc :
 ALS Vial : 6 Sample Multiplier: 1

Instrument :
 ECD_D
 ClientSampleId :
 PB170043BS

Integration File signal 1: autoint1.e
 Integration File signal 2: autoint2.e
 Quant Time: Oct 10 08:24:30 2025
 Quant Method : Z:\pestpcbsrv\HPCHEM1\ECD_D\Method\PD091825.M
 Quant Title : GC Extractables
 QLast Update : Fri Sep 19 05:52:38 2025
 Response via : Initial Calibration
 Integrator: ChemStation

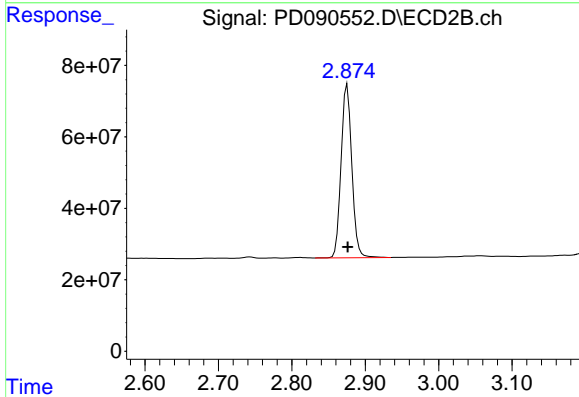
Volume Inj. : 1 µl
 Signal #1 Phase : ZB-MR1 Signal #2 Phase: ZB-MR2
 Signal #1 Info : 30M x 0.32mm x0.5 Signal #2 Info : 30M x 0.32mm x 0.25µm



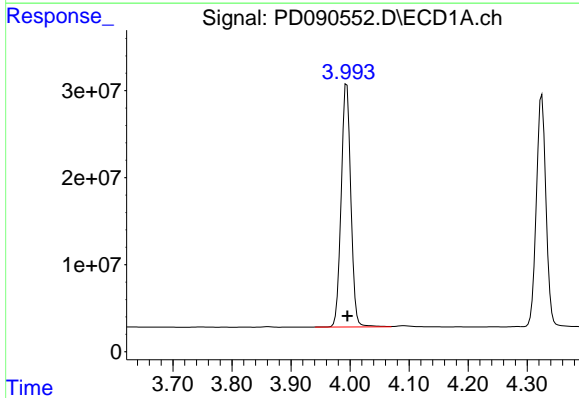


#1 Tetrachloro-m-xylene
 R.T.: 3.545 min
 Delta R.T.: 0.000 min
 Response: 54037556
 Conc: 16.62 ng/ml

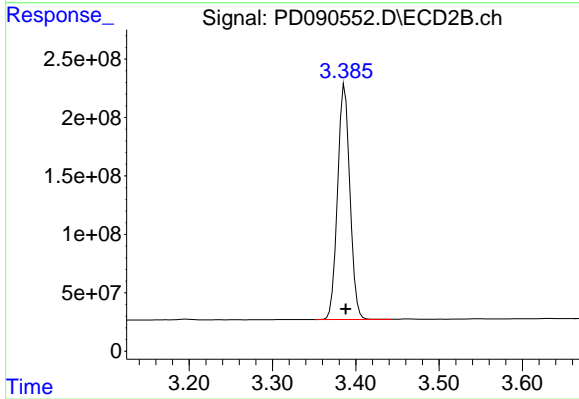
Instrument :
 ECD_D
 ClientSampleId :
 PB170043BS



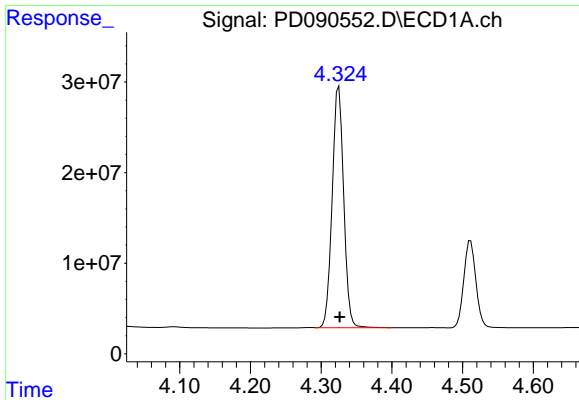
#1 Tetrachloro-m-xylene
 R.T.: 2.875 min
 Delta R.T.: 0.000 min
 Response: 493048466
 Conc: 17.96 ng/ml



#2 alpha-BHC
 R.T.: 3.994 min
 Delta R.T.: 0.000 min
 Response: 316756123
 Conc: 45.35 ng/ml

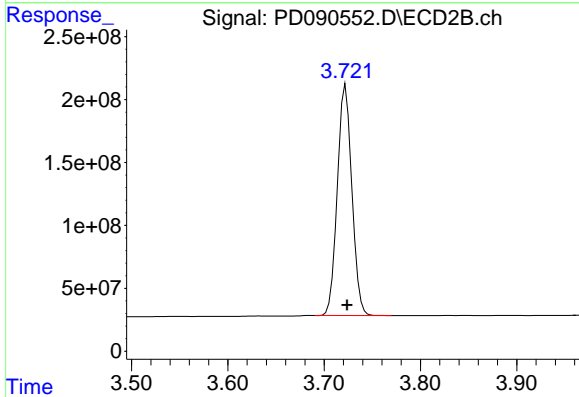


#2 alpha-BHC
 R.T.: 3.387 min
 Delta R.T.: -0.001 min
 Response: 2070642375
 Conc: 47.29 ng/ml

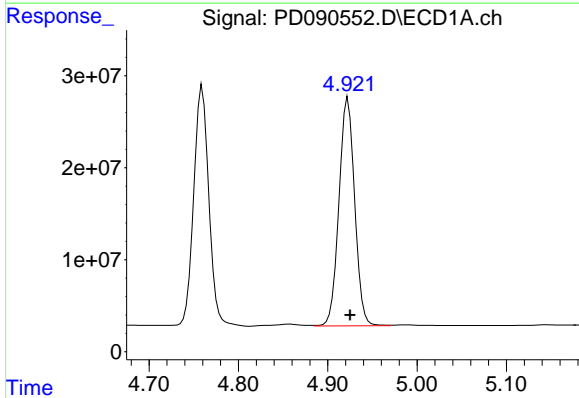


#3 gamma-BHC (Lindane)
R.T.: 4.325 min
Delta R.T.: -0.001 min
Response: 300832226
Conc: 45.46 ng/ml

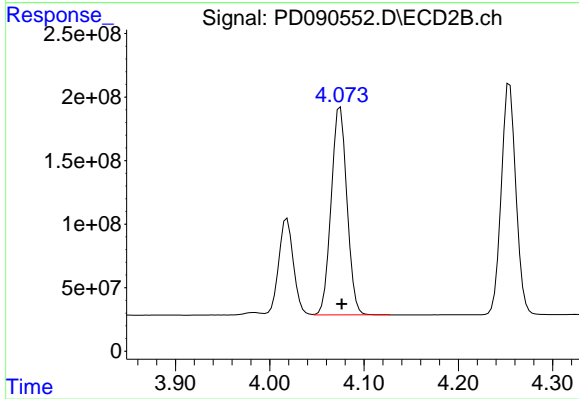
Instrument :
ECD_D
ClientSampleId :
PB170043BS



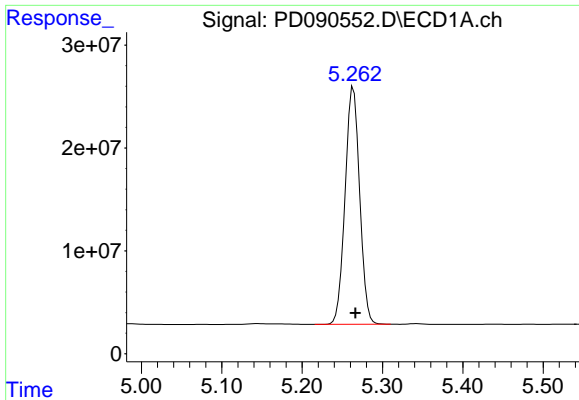
#3 gamma-BHC (Lindane)
R.T.: 3.723 min
Delta R.T.: -0.001 min
Response: 1922100765
Conc: 47.18 ng/ml



#4 Heptachlor
R.T.: 4.923 min
Delta R.T.: -0.002 min
Response: 302263183
Conc: 45.71 ng/ml

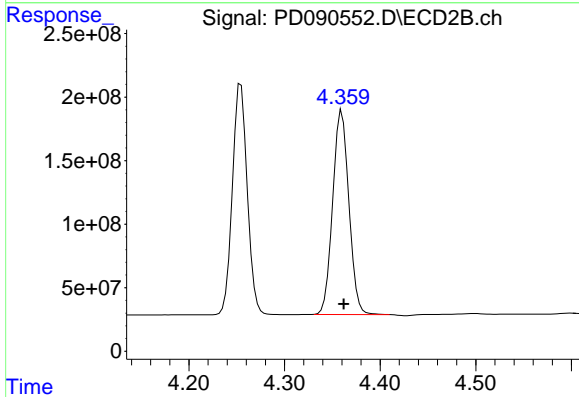


#4 Heptachlor
R.T.: 4.075 min
Delta R.T.: -0.002 min
Response: 1902287788
Conc: 46.72 ng/ml

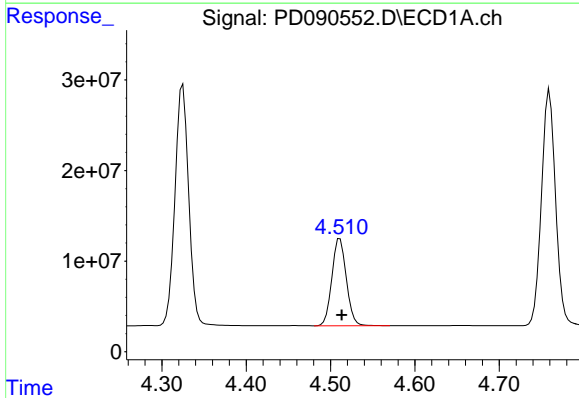


#5 Aldrin
 R.T.: 5.264 min
 Delta R.T.: -0.002 min
 Response: 290886977
 Conc: 45.81 ng/ml

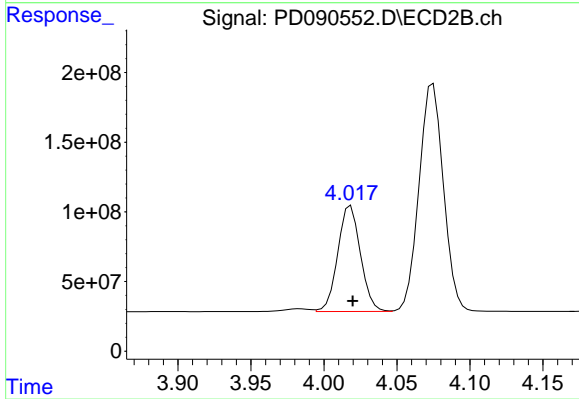
Instrument :
 ECD_D
 ClientSampleId :
 PB170043BS



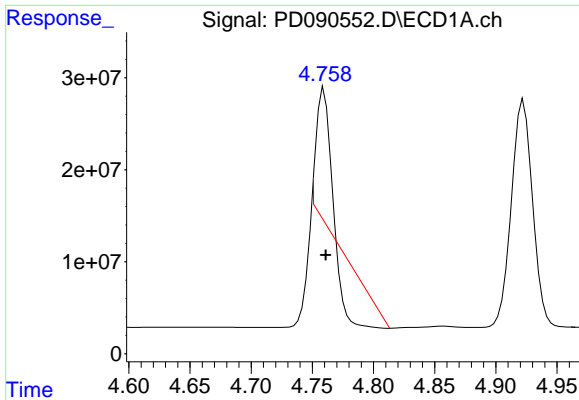
#5 Aldrin
 R.T.: 4.360 min
 Delta R.T.: -0.002 min
 Response: 1888789653
 Conc: 47.30 ng/ml



#6 beta-BHC
 R.T.: 4.511 min
 Delta R.T.: -0.002 min
 Response: 114599048
 Conc: 44.42 ng/ml



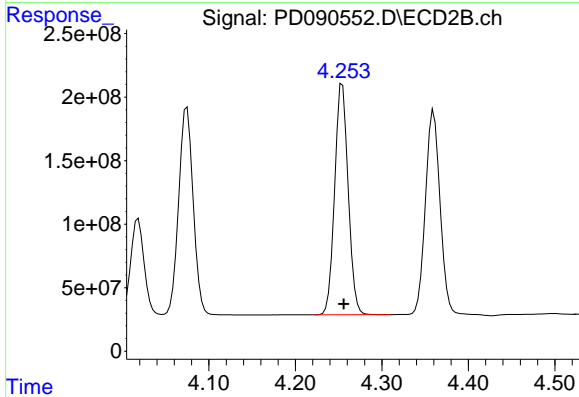
#6 beta-BHC
 R.T.: 4.018 min
 Delta R.T.: -0.001 min
 Response: 821260850
 Conc: 47.38 ng/ml



#7 delta-BHC

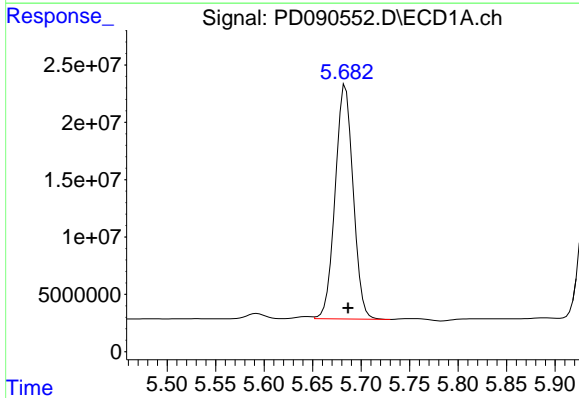
R.T.: 4.760 min
 Delta R.T.: -0.001 min
 Response: 16123947
 Conc: 2.50 ng/ml

Instrument :
 ECD_D
 ClientSampleId :
 PB170043BS



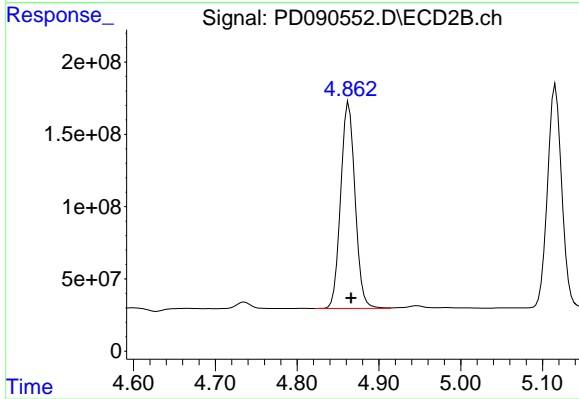
#7 delta-BHC

R.T.: 4.254 min
 Delta R.T.: -0.001 min
 Response: 1964895490
 Conc: 47.58 ng/ml



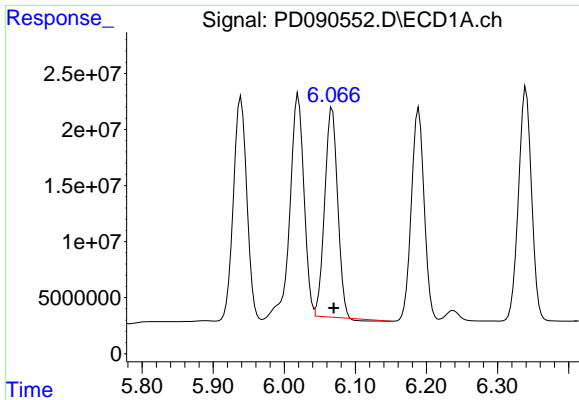
#8 Heptachlor epoxide

R.T.: 5.684 min
 Delta R.T.: -0.002 min
 Response: 262832889
 Conc: 45.99 ng/ml



#8 Heptachlor epoxide

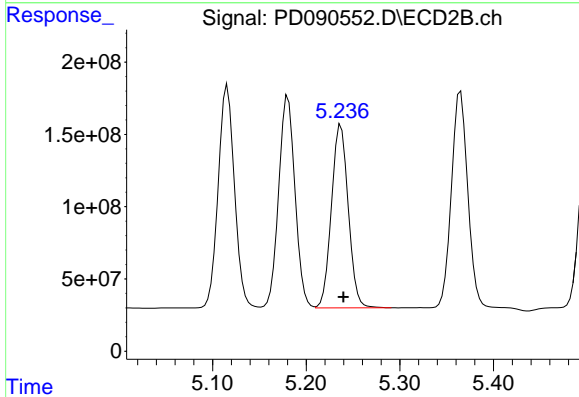
R.T.: 4.863 min
 Delta R.T.: -0.003 min
 Response: 1737251750
 Conc: 47.12 ng/ml



#9 Endosulfan I

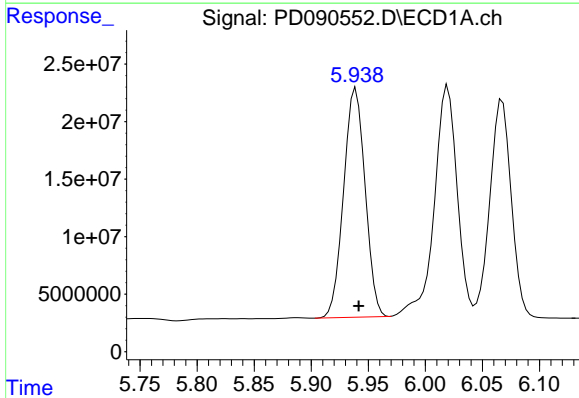
R.T.: 6.067 min
 Delta R.T.: -0.002 min
 Response: 234861337
 Conc: 43.48 ng/ml

Instrument :
 ECD_D
 ClientSampleId :
 PB170043BS



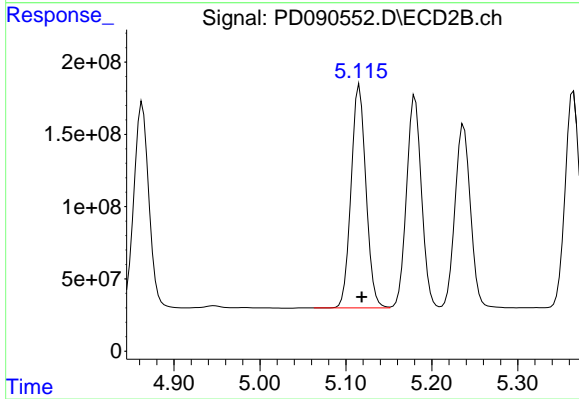
#9 Endosulfan I

R.T.: 5.237 min
 Delta R.T.: -0.003 min
 Response: 1583292152
 Conc: 45.75 ng/ml



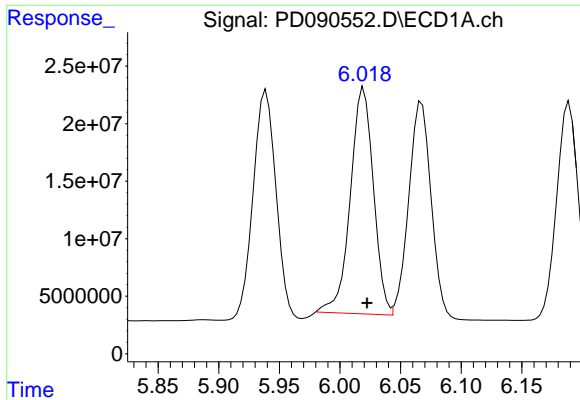
#10 gamma-Chlordane

R.T.: 5.939 min
 Delta R.T.: -0.002 min
 Response: 261268981
 Conc: 45.74 ng/ml



#10 gamma-Chlordane

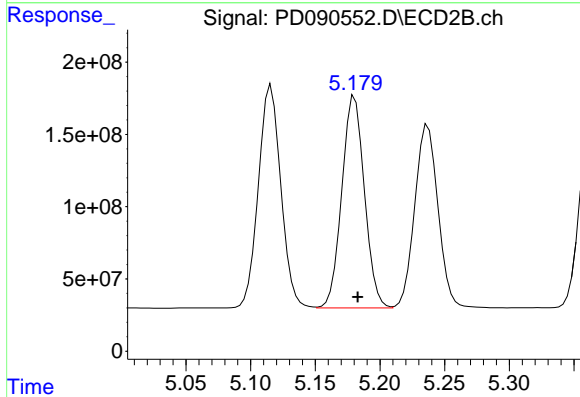
R.T.: 5.116 min
 Delta R.T.: -0.002 min
 Response: 1859698478
 Conc: 47.34 ng/ml



#11 alpha-Chlordane

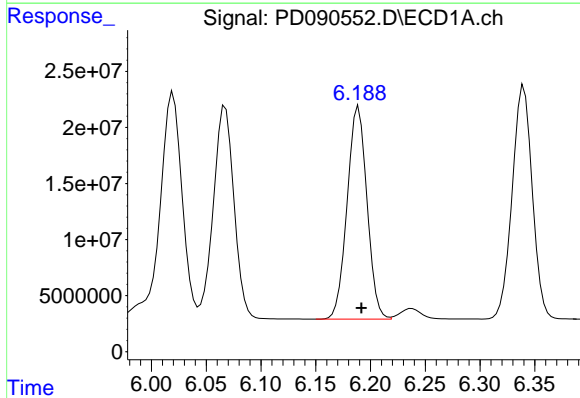
R.T.: 6.020 min
 Delta R.T.: -0.003 min
 Response: 260691778
 Conc: 45.25 ng/ml

Instrument :
 ECD_D
 ClientSampleId :
 PB170043BS



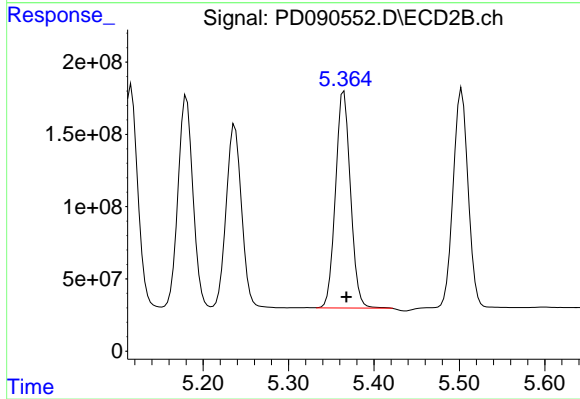
#11 alpha-Chlordane

R.T.: 5.180 min
 Delta R.T.: -0.002 min
 Response: 1779208007
 Conc: 47.24 ng/ml



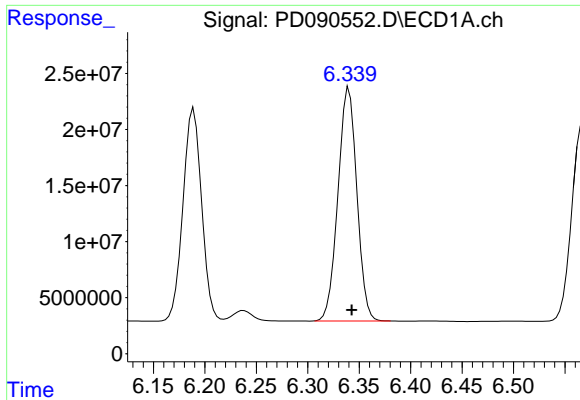
#12 4,4'-DDE

R.T.: 6.189 min
 Delta R.T.: -0.003 min
 Response: 239415648
 Conc: 45.98 ng/ml



#12 4,4'-DDE

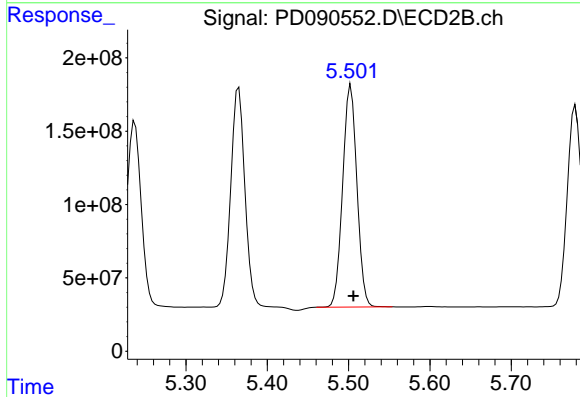
R.T.: 5.365 min
 Delta R.T.: -0.003 min
 Response: 1828314926
 Conc: 47.76 ng/ml



#13 Dieldrin

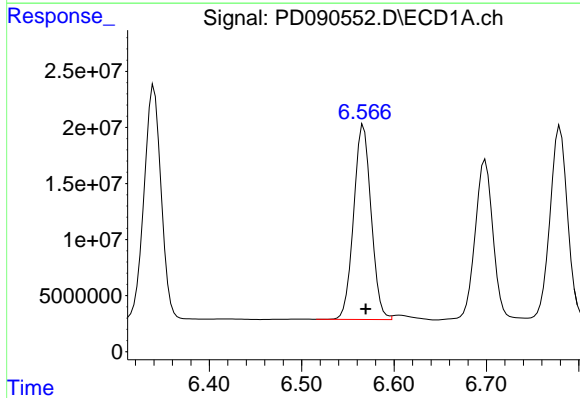
R.T.: 6.340 min
 Delta R.T.: -0.003 min
 Response: 265894215
 Conc: 46.12 ng/ml

Instrument :
 ECD_D
 ClientSampleId :
 PB170043BS



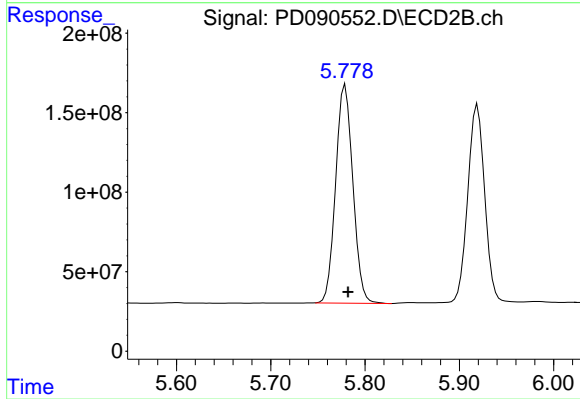
#13 Dieldrin

R.T.: 5.503 min
 Delta R.T.: -0.003 min
 Response: 1841401368
 Conc: 47.28 ng/ml



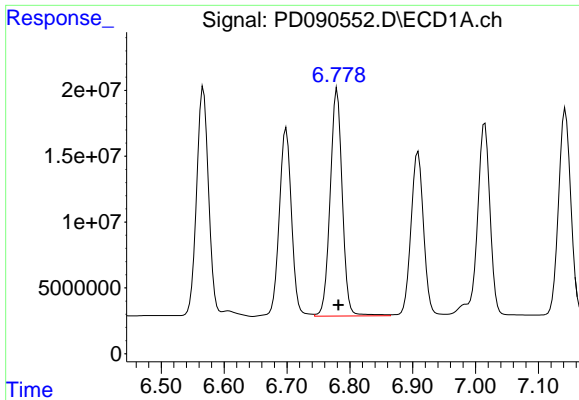
#14 Endrin

R.T.: 6.567 min
 Delta R.T.: -0.002 min
 Response: 228165074
 Conc: 46.62 ng/ml



#14 Endrin

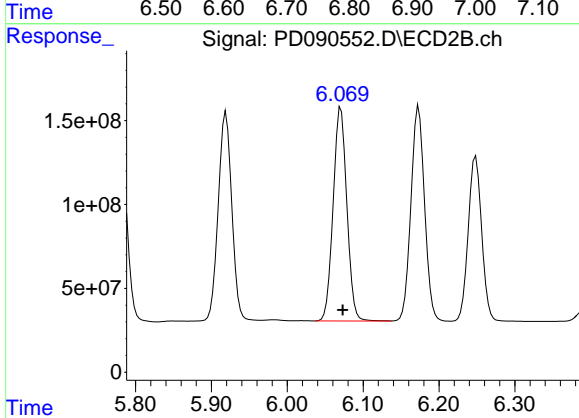
R.T.: 5.779 min
 Delta R.T.: -0.003 min
 Response: 1742967968
 Conc: 48.64 ng/ml



#15 Endosulfan II

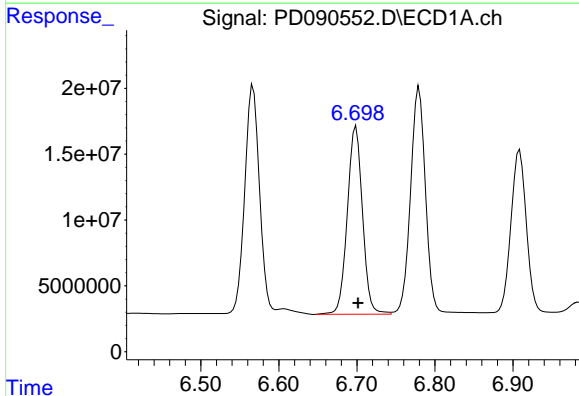
R.T.: 6.780 min
 Delta R.T.: -0.002 min
 Response: 231287133
 Conc: 47.42 ng/ml

Instrument :
 ECD_D
 ClientSampleId :
 PB170043BS



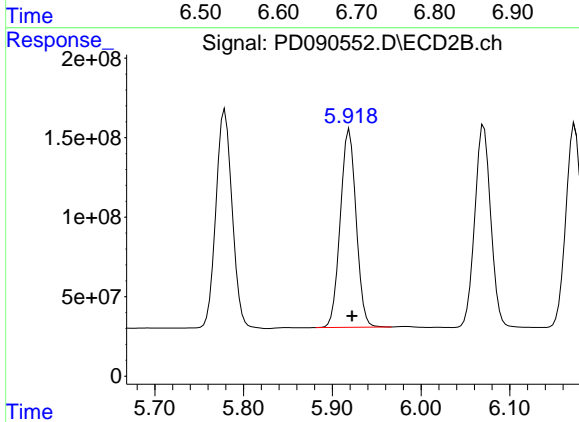
#15 Endosulfan II

R.T.: 6.071 min
 Delta R.T.: -0.002 min
 Response: 1599742249
 Conc: 47.40 ng/ml



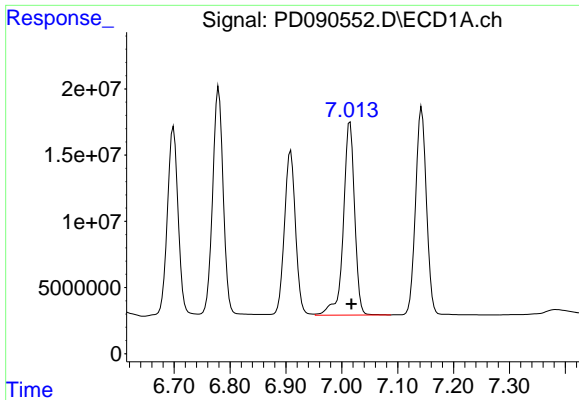
#16 4,4'-DDD

R.T.: 6.699 min
 Delta R.T.: -0.003 min
 Response: 192849181
 Conc: 47.06 ng/ml



#16 4,4'-DDD

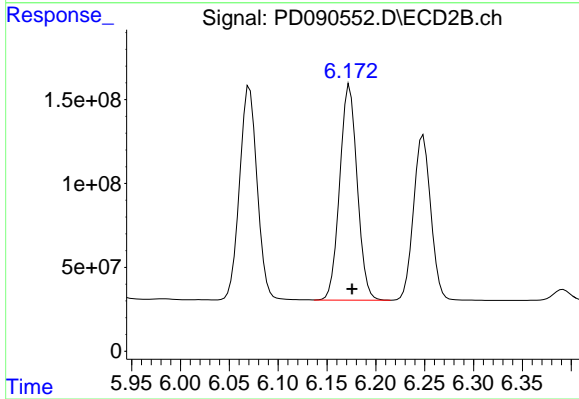
R.T.: 5.919 min
 Delta R.T.: -0.003 min
 Response: 1543725043
 Conc: 47.60 ng/ml



#17 4,4'-DDT

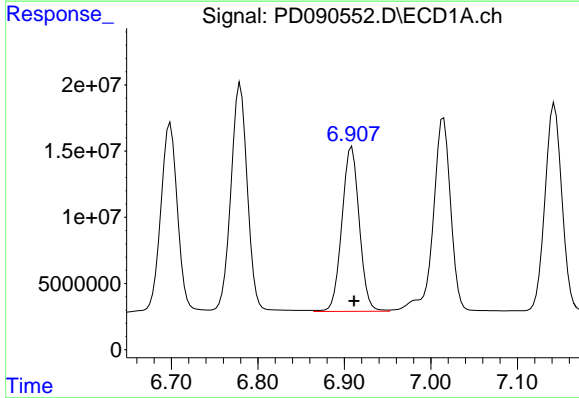
R.T.: 7.015 min
 Delta R.T.: -0.002 min
 Response: 205300160
 Conc: 46.11 ng/ml

Instrument :
 ECD_D
 ClientSampleId :
 PB170043BS



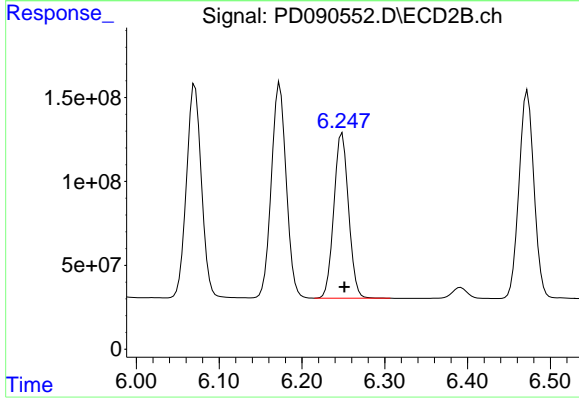
#17 4,4'-DDT

R.T.: 6.173 min
 Delta R.T.: -0.002 min
 Response: 1600496525
 Conc: 46.55 ng/ml



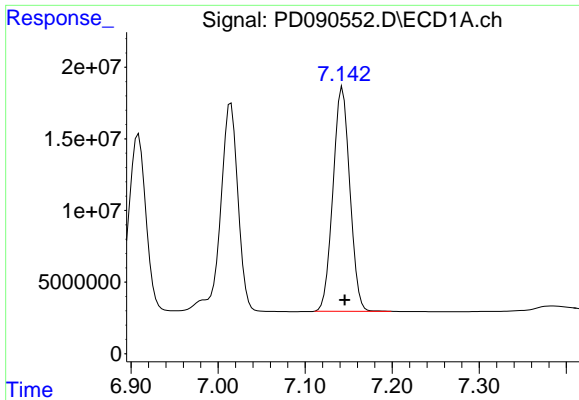
#18 Endrin aldehyde

R.T.: 6.909 min
 Delta R.T.: -0.003 min
 Response: 172815503
 Conc: 50.37 ng/ml



#18 Endrin aldehyde

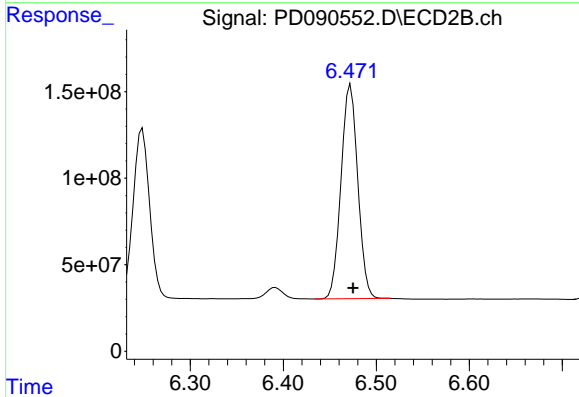
R.T.: 6.249 min
 Delta R.T.: -0.003 min
 Response: 1212355372
 Conc: 51.49 ng/ml



#19 Endosulfan Sulfate

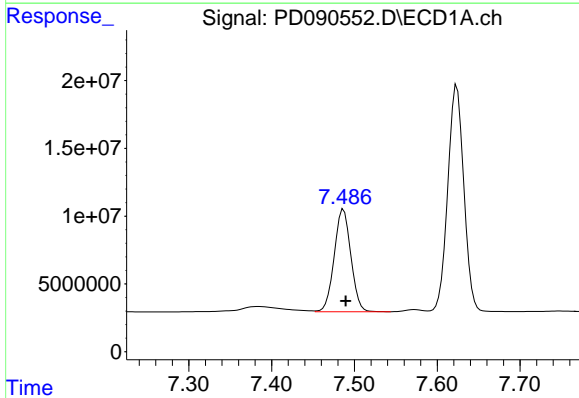
R.T.: 7.143 min
 Delta R.T.: -0.003 min
 Response: 210701485
 Conc: 45.80 ng/ml

Instrument :
 ECD_D
 ClientSampleId :
 PB170043BS



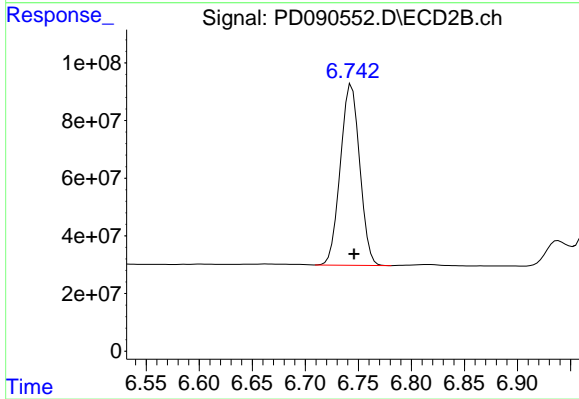
#19 Endosulfan Sulfate

R.T.: 6.472 min
 Delta R.T.: -0.003 min
 Response: 1549646749
 Conc: 47.40 ng/ml



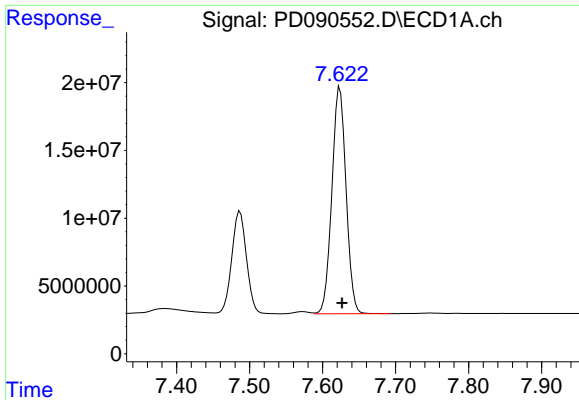
#20 Methoxychlor

R.T.: 7.487 min
 Delta R.T.: -0.003 min
 Response: 105926487
 Conc: 44.95 ng/ml



#20 Methoxychlor

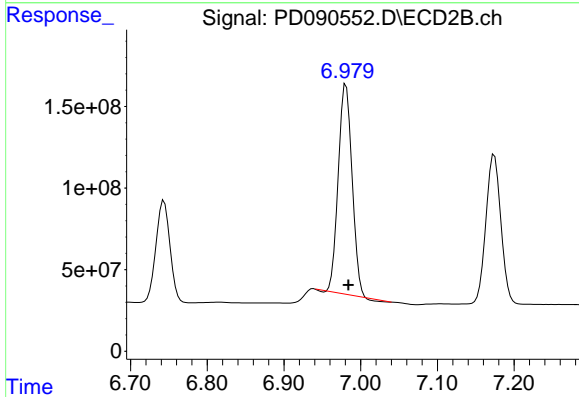
R.T.: 6.744 min
 Delta R.T.: -0.002 min
 Response: 795371555
 Conc: 45.71 ng/ml



#21 Endrin ketone

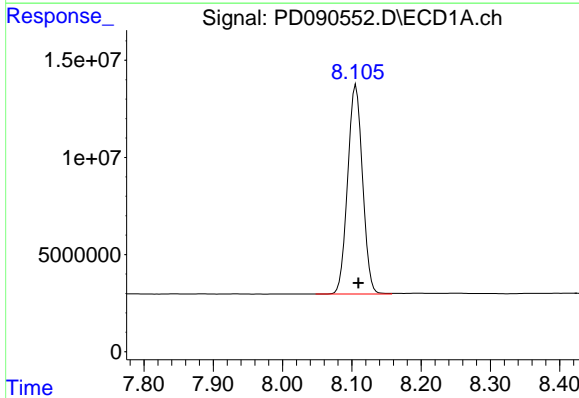
R.T.: 7.624 min
 Delta R.T.: -0.003 min
 Response: 225469240
 Conc: 45.57 ng/ml

Instrument :
 ECD_D
 ClientSampleId :
 PB170043BS



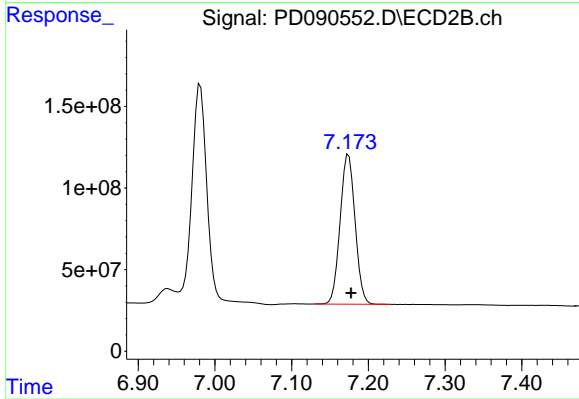
#21 Endrin ketone

R.T.: 6.981 min
 Delta R.T.: -0.003 min
 Response: 1591156994
 Conc: 44.07 ng/ml



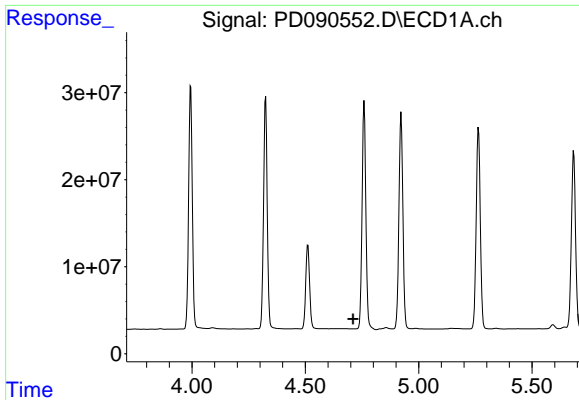
#22 Mirex

R.T.: 8.106 min
 Delta R.T.: -0.003 min
 Response: 160564461
 Conc: 43.34 ng/ml



#22 Mirex

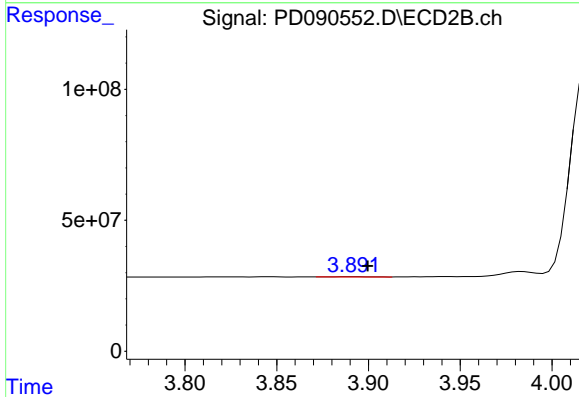
R.T.: 7.174 min
 Delta R.T.: -0.003 min
 Response: 1244591379
 Conc: 45.08 ng/ml



#23 Chlordane-1

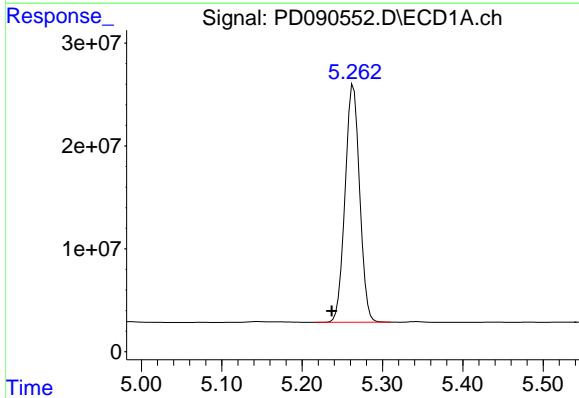
R.T.: 0.000 min
 Exp R.T.: 4.710 min
 Response: 0
 Conc: N.D.

Instrument :
 ECD_D
 ClientSampleId :
 PB170043BS



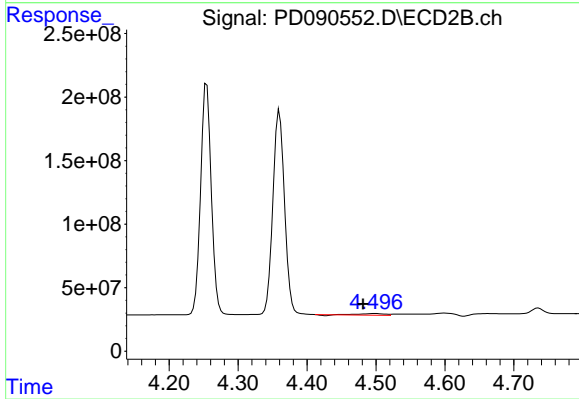
#23 Chlordane-1

R.T.: 3.892 min
 Delta R.T.: -0.008 min
 Response: 1240733
 Conc: 1.03 ng/ml



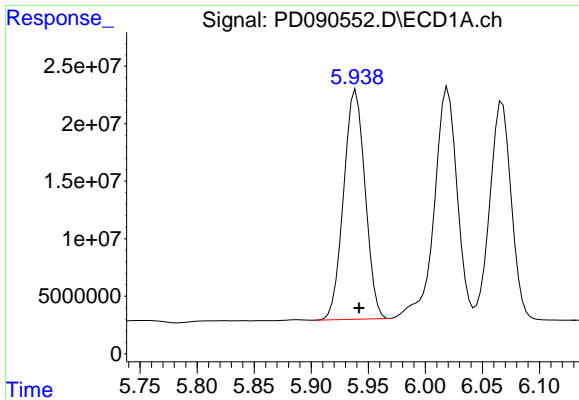
#24 Chlordane-2

R.T.: 5.264 min
 Delta R.T.: 0.027 min
 Response: 290886977
 Conc: 1355.51 ng/ml



#24 Chlordane-2

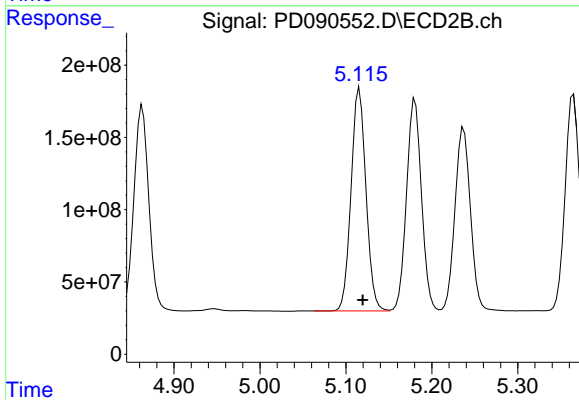
R.T.: 4.498 min
 Delta R.T.: 0.017 min
 Response: 28848608
 Conc: 23.07 ng/ml



#25 Chlordane-3

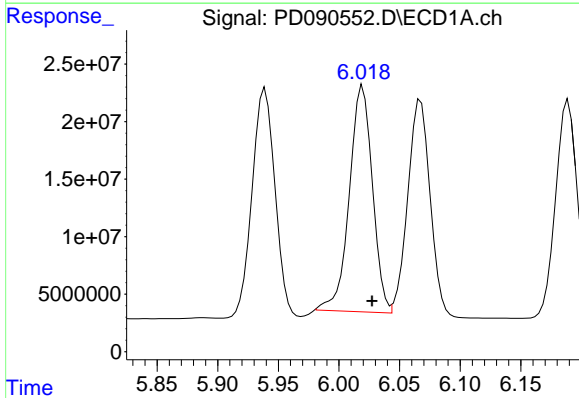
R.T.: 5.939 min
 Delta R.T.: -0.003 min
 Response: 261268981
 Conc: 312.14 ng/ml

Instrument :
 ECD_D
 ClientSampleId :
 PB170043BS



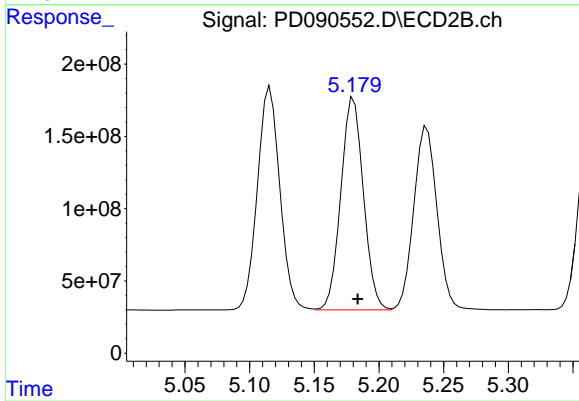
#25 Chlordane-3

R.T.: 5.116 min
 Delta R.T.: -0.004 min
 Response: 1859698478
 Conc: 490.61 ng/ml



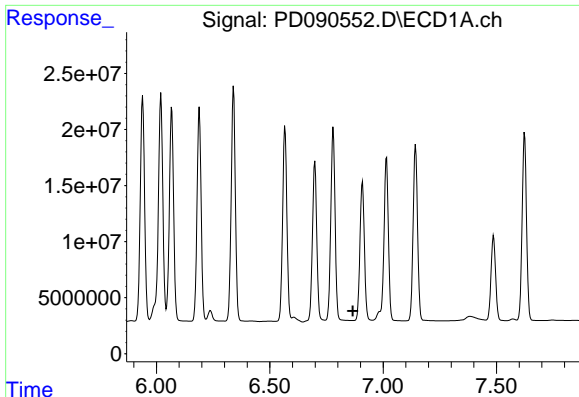
#26 Chlordane-4

R.T.: 6.020 min
 Delta R.T.: -0.007 min
 Response: 260691778
 Conc: 255.44 ng/ml



#26 Chlordane-4

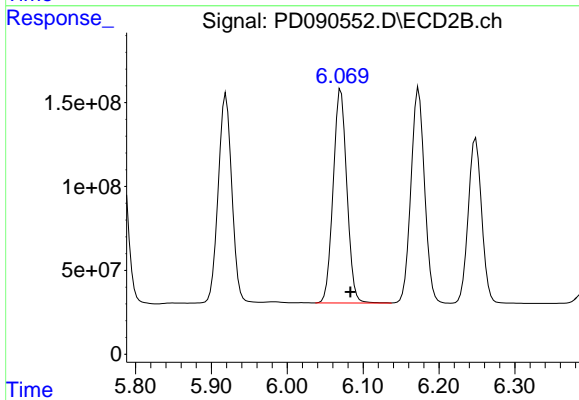
R.T.: 5.180 min
 Delta R.T.: -0.003 min
 Response: 1779208007
 Conc: 546.43 ng/ml



#27 Chlordane-5

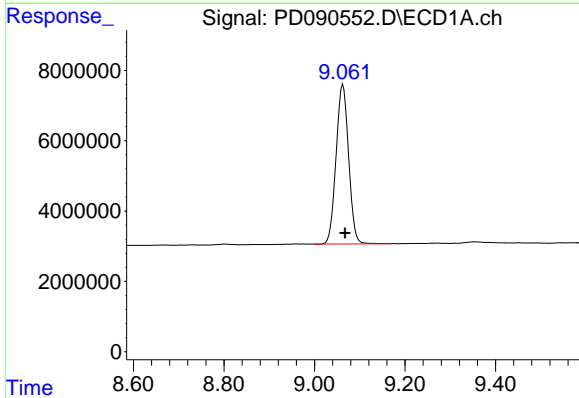
R.T.: 0.000 min
 Exp R.T.: 6.867 min
 Response: 0
 Conc: N.D.

Instrument :
 ECD_D
 ClientSampleId :
 PB170043BS



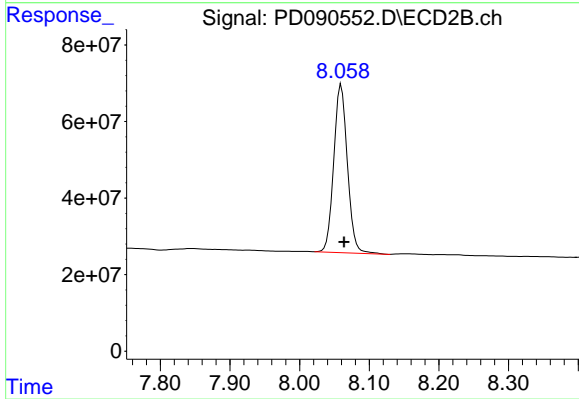
#27 Chlordane-5

R.T.: 6.071 min
 Delta R.T.: -0.013 min
 Response: 1599742249
 Conc: 1054.12 ng/ml



#28 Decachlorobiphenyl

R.T.: 9.063 min
 Delta R.T.: -0.005 min
 Response: 87274611
 Conc: 18.09 ng/ml



#28 Decachlorobiphenyl

R.T.: 8.060 min
 Delta R.T.: -0.004 min
 Response: 598254713
 Conc: 18.46 ng/ml