

Data Path : Z:\pestpcbsrv\HPCHEM1\ECD_D\Data\PD101125\
 Data File : PD090553.D
 Signal(s) : Signal #1: ECD1A.ch Signal #2: ECD2B.ch
 Acq On : 09 Oct 2025 16:34
 Operator : AR\AJ
 Sample : PB170043BSD
 Misc :
 ALS Vial : 7 Sample Multiplier: 1

Instrument :
 ECD_D
 ClientSampleId :
 PB170043BSD

Integration File signal 1: autoint1.e
 Integration File signal 2: autoint2.e
 Quant Time: Oct 10 08:24:58 2025
 Quant Method : Z:\pestpcbsrv\HPCHEM1\ECD_D\Method\PD091825.M
 Quant Title : GC Extractables
 QLast Update : Fri Sep 19 05:52:38 2025
 Response via : Initial Calibration
 Integrator: ChemStation

Volume Inj. : 1 µl
 Signal #1 Phase : ZB-MR1 Signal #2 Phase: ZB-MR2
 Signal #1 Info : 30M x 0.32mm x0.5 Signal #2 Info : 30M x 0.32mm x 0.25µm

Compound	RT#1	RT#2	Resp#1	Resp#2	ng/ml	ng/ml

System Monitoring Compounds						
1) SA Tetrachlo...	3.545	2.875	54217364	489.4E6	16.680	17.830
28) SA Decachlor...	9.061	8.059	87381711	595.3E6	18.110	18.365
Target Compounds						
2) A alpha-BHC	3.994	3.387	318.1E6	2061.3E6	45.540	47.081
3) MA gamma-BHC...	4.325	3.723	301.2E6	1910.0E6	45.519	46.889
4) MA Heptachlor	4.922	4.074	303.6E6	1895.1E6	45.917	46.543
5) MB Aldrin	5.263	4.360	291.7E6	1879.1E6	45.942	47.053
6) B beta-BHC	4.511	4.018	114.7E6	813.7E6	44.462	46.938
7) B delta-BHC	4.760	4.255	42128307	1947.4E6	6.524	47.159 #
8) B Heptachlo...	5.684	4.863	264.3E6	1729.9E6	46.245	46.925
9) A Endosulfan I	6.067	5.237	235.5E6	1568.3E6	43.597	45.320
10) B gamma-Chl...	5.939	5.116	261.9E6	1848.4E6	45.856	47.049
11) B alpha-Chl...	6.019	5.180	263.6E6	1769.6E6	45.749	46.981
12) B 4,4'-DDE	6.189	5.365	239.6E6	1816.6E6	46.015	47.458
13) MA Dieldrin	6.340	5.503	266.9E6	1832.6E6	46.304	47.055
14) MA Endrin	6.566	5.779	229.7E6	1753.7E6	46.943	48.942
15) B Endosulfa...	6.779	6.070	232.8E6	1591.4E6	47.718	47.150
16) A 4,4'-DDD	6.698	5.919	194.1E6	1532.3E6	47.374	47.253
17) MA 4,4'-DDT	7.014	6.172	206.9E6	1599.3E6	46.471	46.519
18) B Endrin al...	6.908	6.248	173.5E6	1205.2E6	50.584	51.182
19) B Endosulfa...	7.142	6.472	212.0E6	1544.7E6	46.077	47.252
20) A Methoxychlor	7.486	6.743	107.2E6	794.6E6	45.492	45.663
21) B Endrin ke...	7.623	6.981	226.7E6	1559.4E6	45.828	43.194
22) Mirex	8.105	7.173	161.9E6	1244.6E6	43.690	45.084
23) Chlordane-1	0.000	3.899	0	829695	N.D.	0.689 #
24) Chlordane-2	5.263f	4.497	291.7E6	34437745	1359.433	27.540 #
25) Chlordane-3	5.939	5.116	261.9E6	1848.4E6	312.931	487.627 #
26) Chlordane-4	6.019	5.180	263.6E6	1769.6E6	258.250	543.470 #
27) Chlordane-5	0.000	6.070	0	1591.4E6	N.D.	1048.596 #

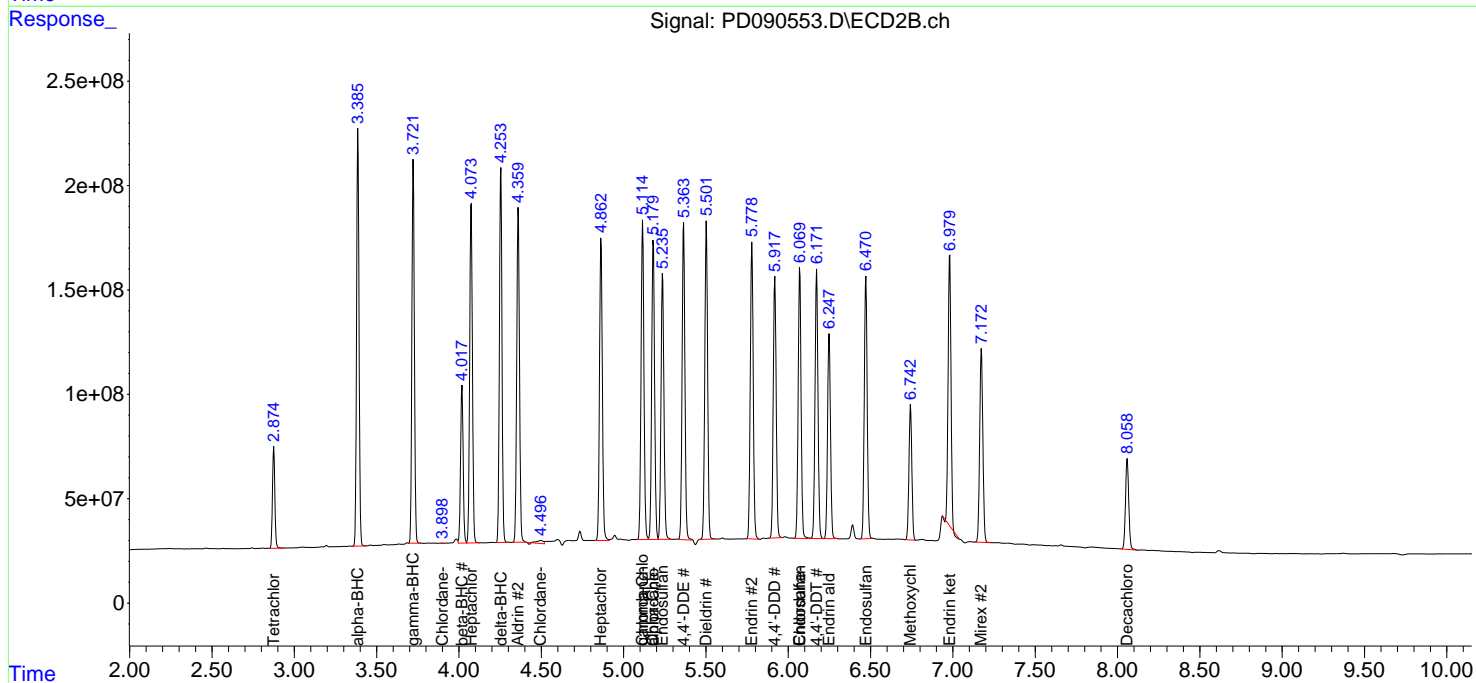
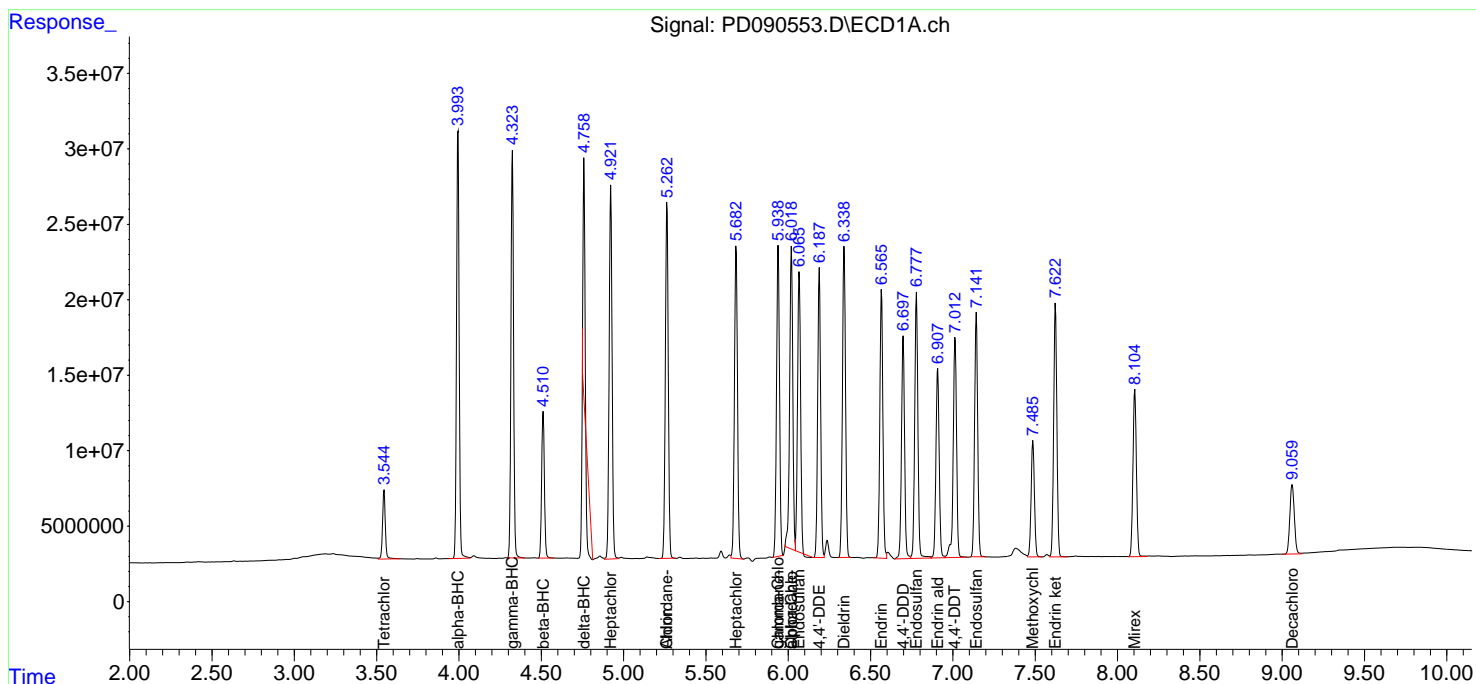
(f)=RT Delta > 1/2 Window (#)=Amounts differ by > 25% (m)=manual int.

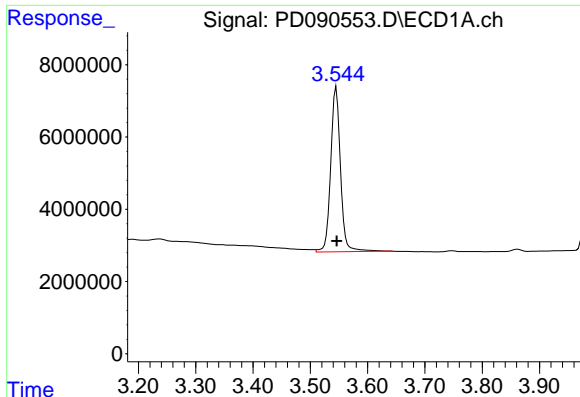
Data Path : Z:\pestpcbsrv\HPCHEM1\ECD_D\Data\PD101125\
 Data File : PD090553.D
 Signal(s) : Signal #1: ECD1A.ch Signal #2: ECD2B.ch
 Acq On : 09 Oct 2025 16:34
 Operator : AR\AJ
 Sample : PB170043BSD
 Misc :
 ALS Vial : 7 Sample Multiplier: 1

Instrument :
 ECD_D
 ClientSampleId :
 PB170043BSD

Integration File signal 1: autoint1.e
 Integration File signal 2: autoint2.e
 Quant Time: Oct 10 08:24:58 2025
 Quant Method : Z:\pestpcbsrv\HPCHEM1\ECD_D\Method\PD091825.M
 Quant Title : GC Extractables
 QLast Update : Fri Sep 19 05:52:38 2025
 Response via : Initial Calibration
 Integrator: ChemStation

Volume Inj. : 1 µl
 Signal #1 Phase : ZB-MR1 Signal #2 Phase: ZB-MR2
 Signal #1 Info : 30M x 0.32mm x0.5 Signal #2 Info : 30M x 0.32mm x 0.25µm

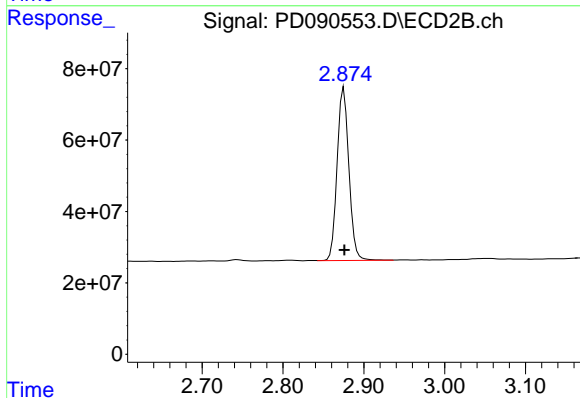




#1 Tetrachloro-m-xylene

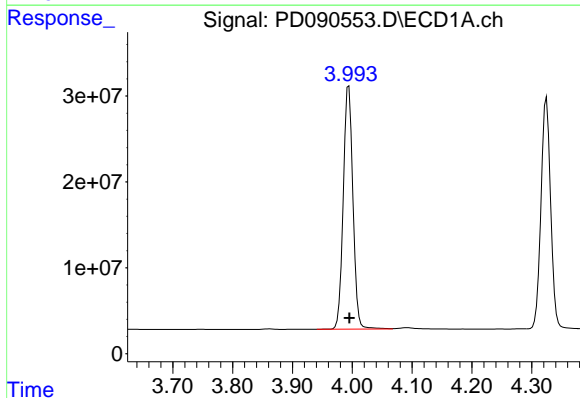
R.T.: 3.545 min
 Delta R.T.: 0.000 min
 Response: 54217364
 Conc: 16.68 ng/ml

Instrument :
 ECD_D
 ClientSampleId :
 PB170043BSD



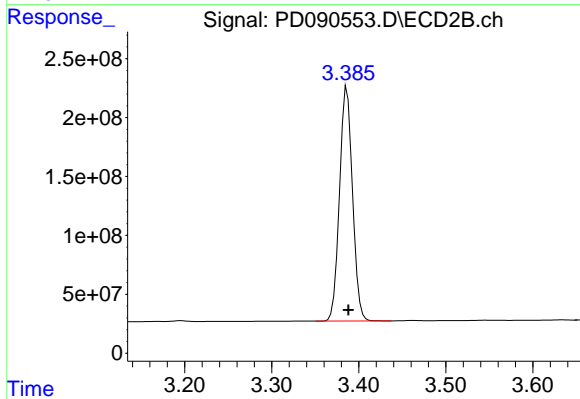
#1 Tetrachloro-m-xylene

R.T.: 2.875 min
 Delta R.T.: 0.000 min
 Response: 489429478
 Conc: 17.83 ng/ml



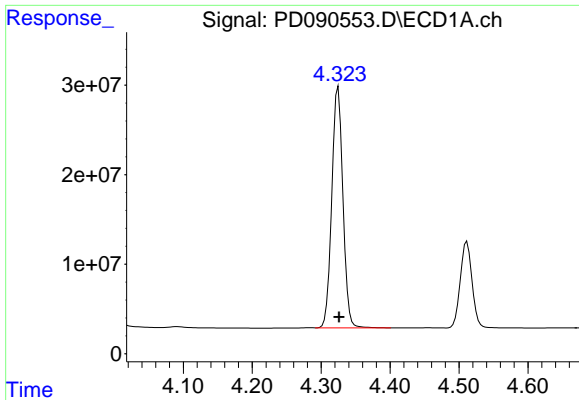
#2 alpha-BHC

R.T.: 3.994 min
 Delta R.T.: -0.001 min
 Response: 318077507
 Conc: 45.54 ng/ml



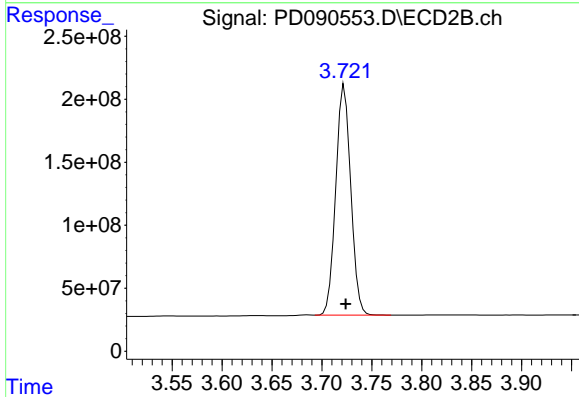
#2 alpha-BHC

R.T.: 3.387 min
 Delta R.T.: -0.001 min
 Response: 2061348610
 Conc: 47.08 ng/ml

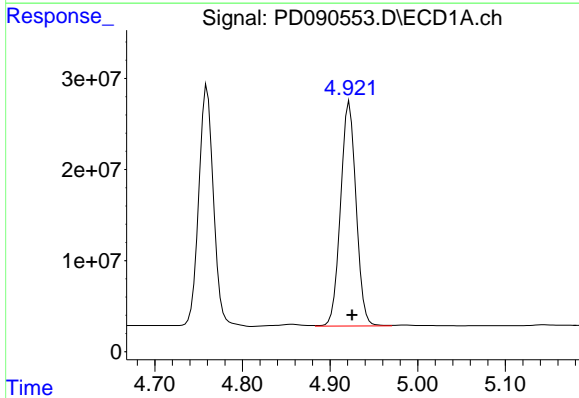


#3 gamma-BHC (Lindane)
 R.T.: 4.325 min
 Delta R.T.: -0.001 min
 Response: 301196154
 Conc: 45.52 ng/ml

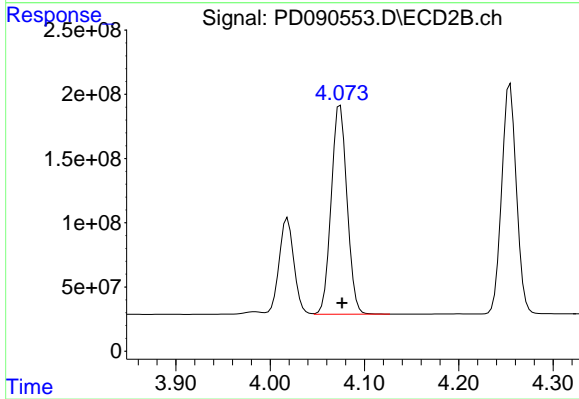
Instrument :
 ECD_D
 ClientSampleId :
 PB170043BSD



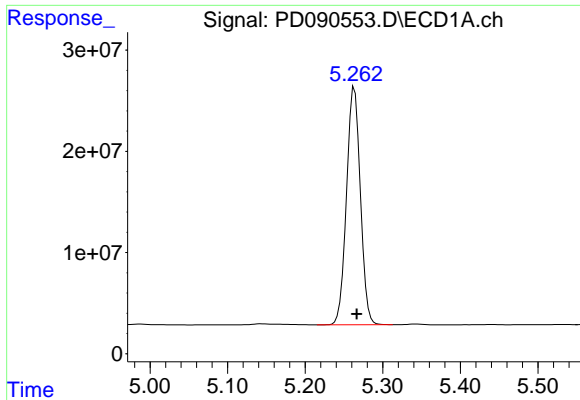
#3 gamma-BHC (Lindane)
 R.T.: 3.723 min
 Delta R.T.: -0.001 min
 Response: 1910030789
 Conc: 46.89 ng/ml



#4 Heptachlor
 R.T.: 4.922 min
 Delta R.T.: -0.003 min
 Response: 303631405
 Conc: 45.92 ng/ml

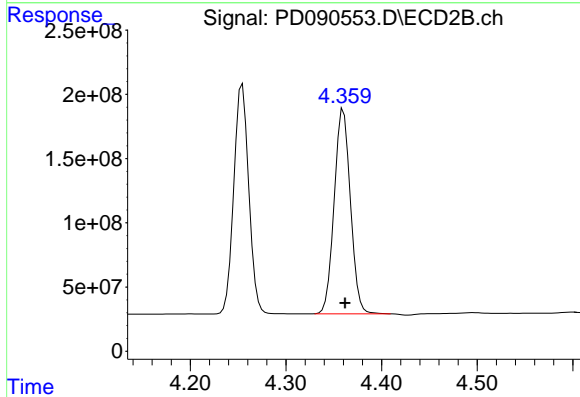


#4 Heptachlor
 R.T.: 4.074 min
 Delta R.T.: -0.002 min
 Response: 1895074776
 Conc: 46.54 ng/ml

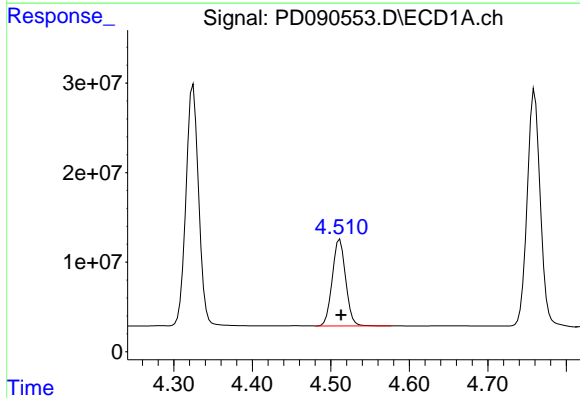


#5 Aldrin
 R.T.: 5.263 min
 Delta R.T.: -0.003 min
 Response: 291728278
 Conc: 45.94 ng/ml

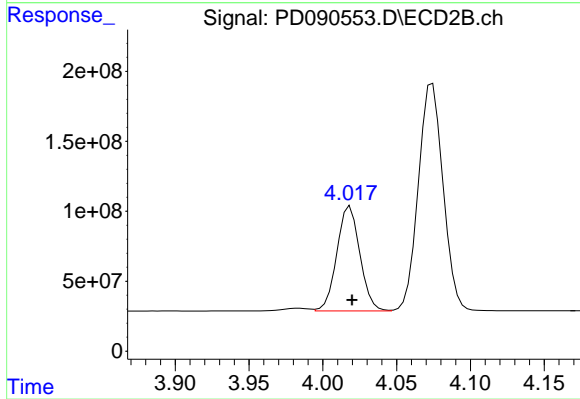
Instrument :
 ECD_D
 ClientSampleId :
 PB170043BSD



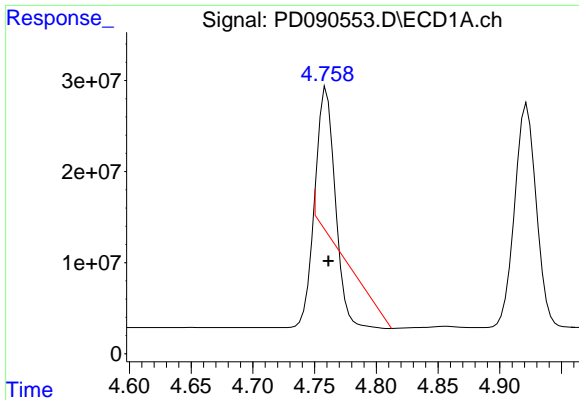
#5 Aldrin
 R.T.: 4.360 min
 Delta R.T.: -0.002 min
 Response: 1879053947
 Conc: 47.05 ng/ml



#6 beta-BHC
 R.T.: 4.511 min
 Delta R.T.: -0.002 min
 Response: 114708144
 Conc: 44.46 ng/ml



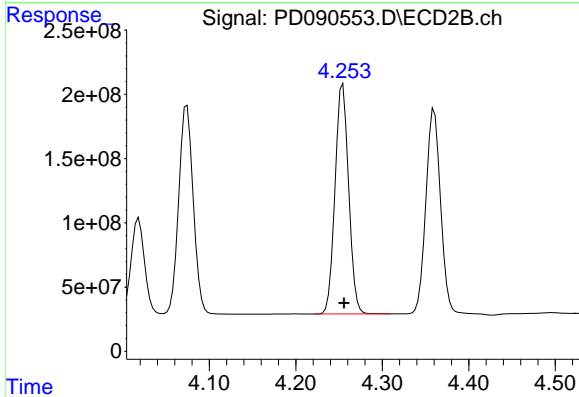
#6 beta-BHC
 R.T.: 4.018 min
 Delta R.T.: -0.001 min
 Response: 813679524
 Conc: 46.94 ng/ml



#7 delta-BHC

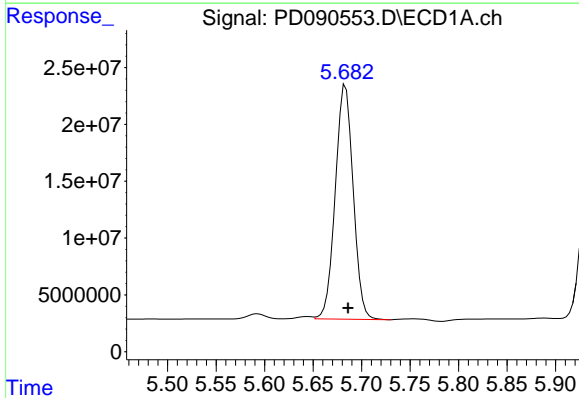
R.T.: 4.760 min
 Delta R.T.: -0.001 min
 Response: 42128307
 Conc: 6.52 ng/ml

Instrument :
 ECD_D
 ClientSampleId :
 PB170043BSD



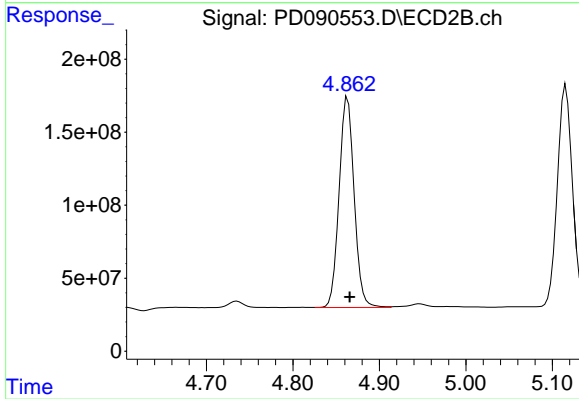
#7 delta-BHC

R.T.: 4.255 min
 Delta R.T.: -0.001 min
 Response: 1947420754
 Conc: 47.16 ng/ml



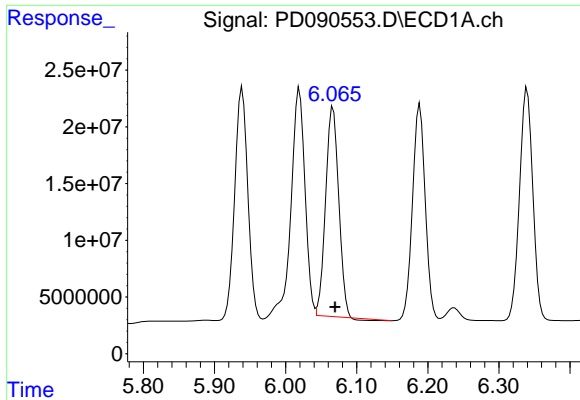
#8 Heptachlor epoxide

R.T.: 5.684 min
 Delta R.T.: -0.003 min
 Response: 264286948
 Conc: 46.25 ng/ml



#8 Heptachlor epoxide

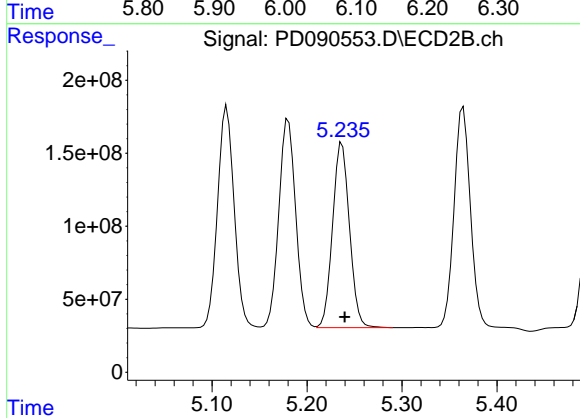
R.T.: 4.863 min
 Delta R.T.: -0.002 min
 Response: 1729876231
 Conc: 46.92 ng/ml



#9 Endosulfan I

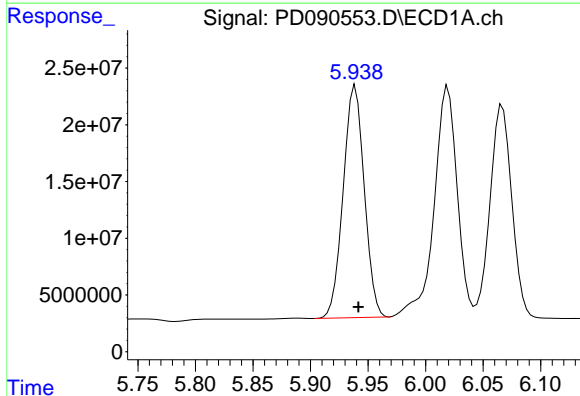
R.T.: 6.067 min
 Delta R.T.: -0.003 min
 Response: 235487565
 Conc: 43.60 ng/ml

Instrument :
 ECD_D
 ClientSampleId :
 PB170043BSD



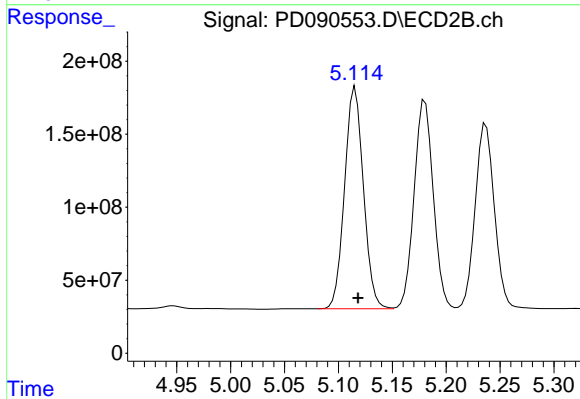
#9 Endosulfan I

R.T.: 5.237 min
 Delta R.T.: -0.003 min
 Response: 1568307072
 Conc: 45.32 ng/ml



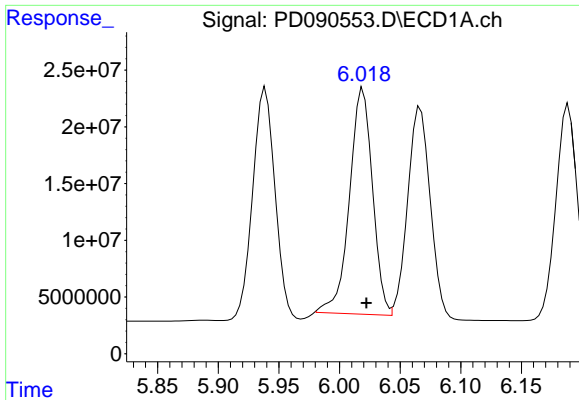
#10 gamma-Chlordane

R.T.: 5.939 min
 Delta R.T.: -0.003 min
 Response: 261927282
 Conc: 45.86 ng/ml



#10 gamma-Chlordane

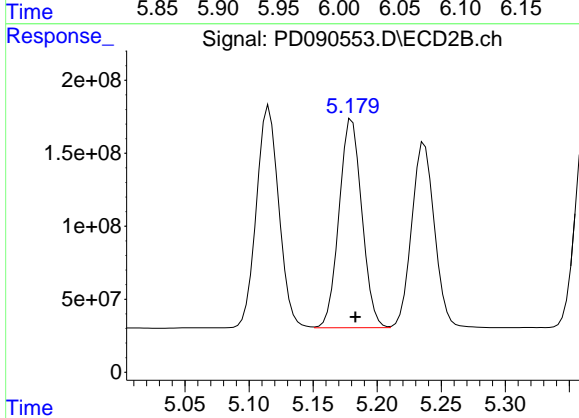
R.T.: 5.116 min
 Delta R.T.: -0.003 min
 Response: 1848386816
 Conc: 47.05 ng/ml



#11 alpha-Chlordane

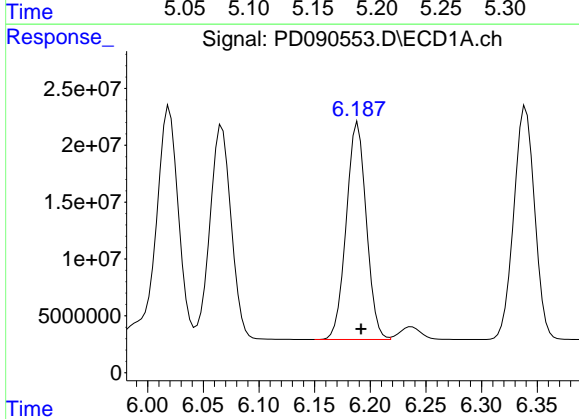
R.T.: 6.019 min
 Delta R.T.: -0.003 min
 Response: 263554599
 Conc: 45.75 ng/ml

Instrument :
 ECD_D
 ClientSampleId :
 PB170043BSD



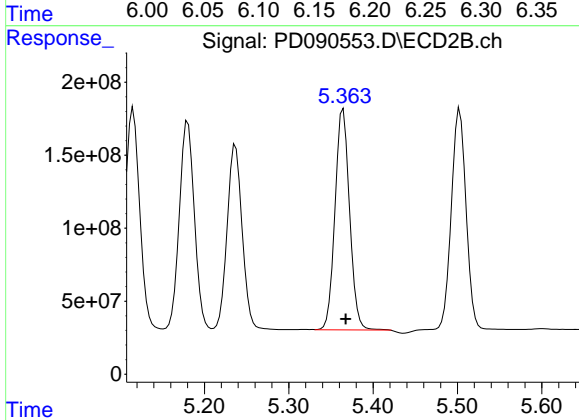
#11 alpha-Chlordane

R.T.: 5.180 min
 Delta R.T.: -0.003 min
 Response: 1769560873
 Conc: 46.98 ng/ml



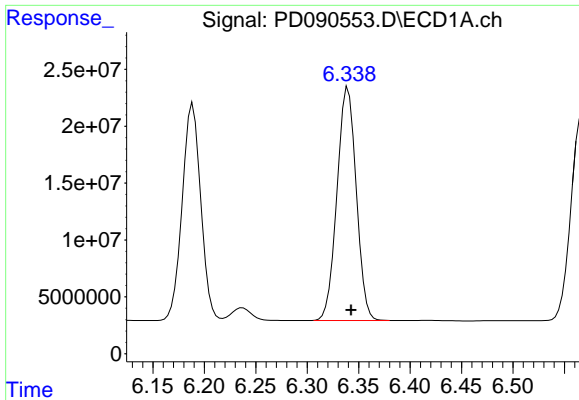
#12 4,4'-DDE

R.T.: 6.189 min
 Delta R.T.: -0.003 min
 Response: 239624731
 Conc: 46.02 ng/ml



#12 4,4'-DDE

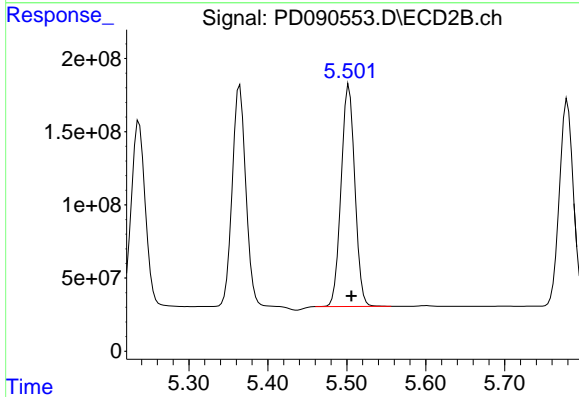
R.T.: 5.365 min
 Delta R.T.: -0.003 min
 Response: 1816629063
 Conc: 47.46 ng/ml



#13 Dieldrin

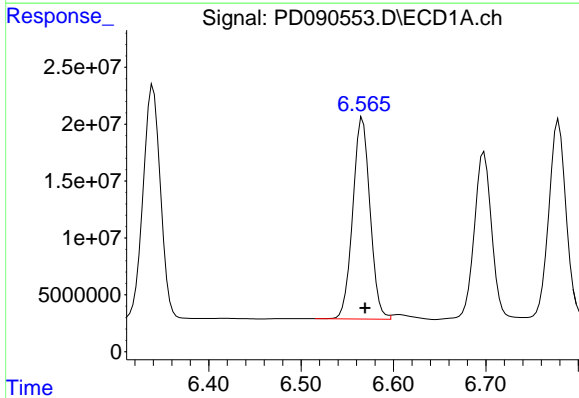
R.T.: 6.340 min
Delta R.T.: -0.003 min
Response: 266925671
Conc: 46.30 ng/ml

Instrument :
ECD_D
ClientSampleId :
PB170043BSD



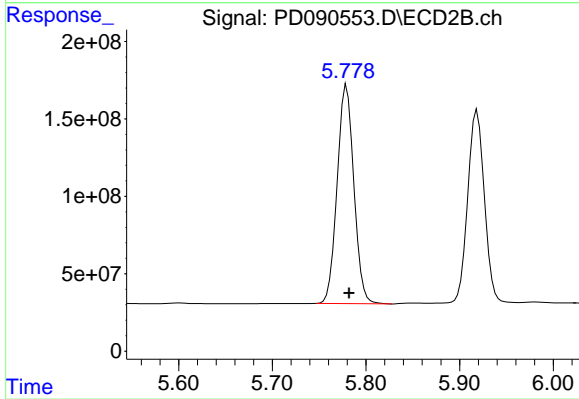
#13 Dieldrin

R.T.: 5.503 min
Delta R.T.: -0.003 min
Response: 1832614519
Conc: 47.06 ng/ml



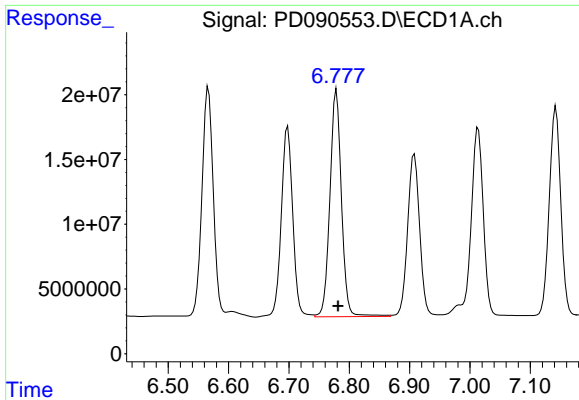
#14 Endrin

R.T.: 6.566 min
Delta R.T.: -0.003 min
Response: 229736423
Conc: 46.94 ng/ml



#14 Endrin

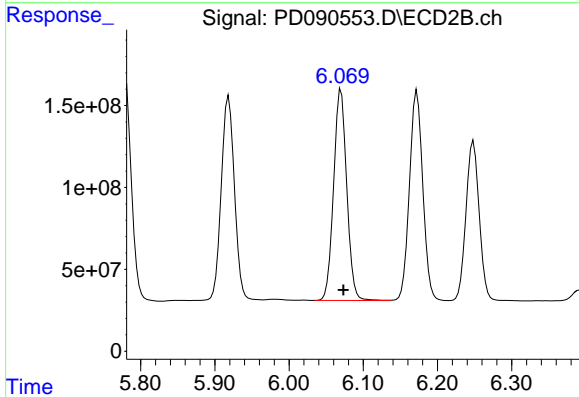
R.T.: 5.779 min
Delta R.T.: -0.003 min
Response: 1753682814
Conc: 48.94 ng/ml



#15 Endosulfan II

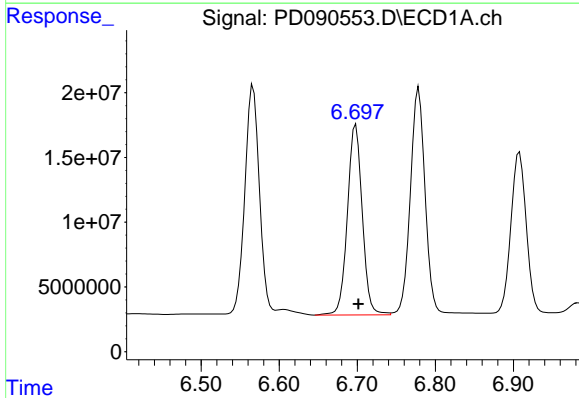
R.T.: 6.779 min
 Delta R.T.: -0.003 min
 Response: 232761605
 Conc: 47.72 ng/ml

Instrument :
 ECD_D
 ClientSampleId :
 PB170043BSD



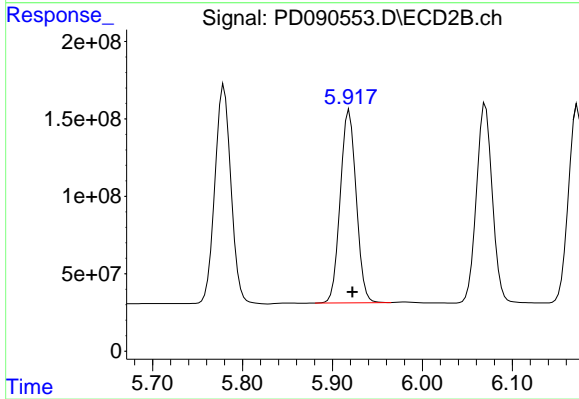
#15 Endosulfan II

R.T.: 6.070 min
 Delta R.T.: -0.003 min
 Response: 1591360195
 Conc: 47.15 ng/ml



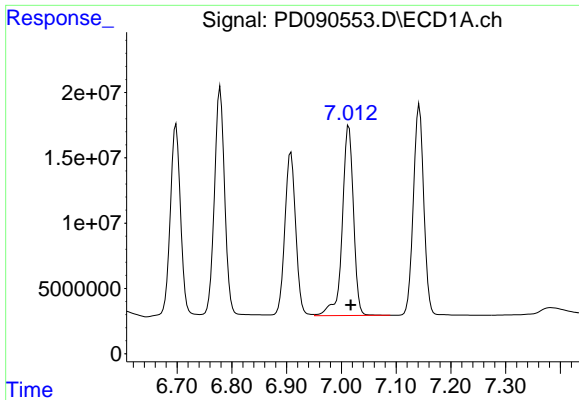
#16 4,4'-DDD

R.T.: 6.698 min
 Delta R.T.: -0.003 min
 Response: 194131427
 Conc: 47.37 ng/ml



#16 4,4'-DDD

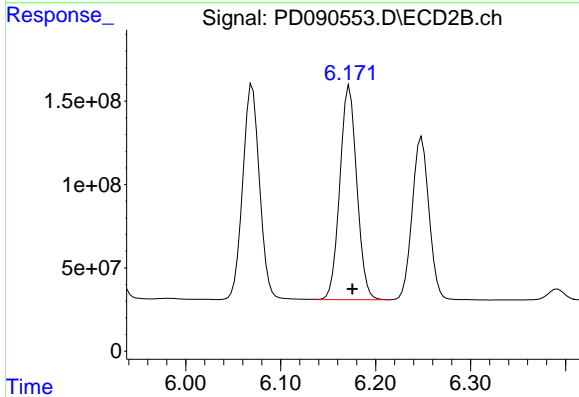
R.T.: 5.919 min
 Delta R.T.: -0.003 min
 Response: 1532302834
 Conc: 47.25 ng/ml



#17 4,4'-DDT

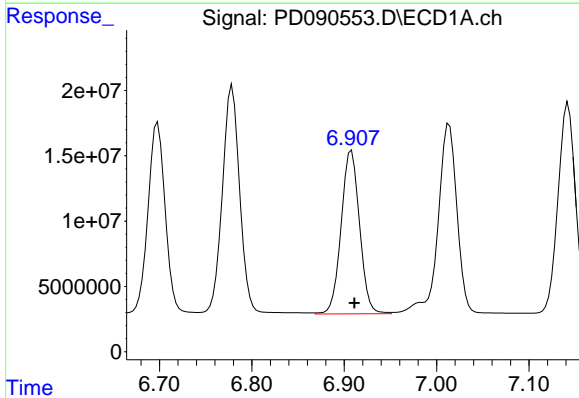
R.T.: 7.014 min
 Delta R.T.: -0.003 min
 Response: 206911960
 Conc: 46.47 ng/ml

Instrument :
 ECD_D
 ClientSampleId :
 PB170043BSD



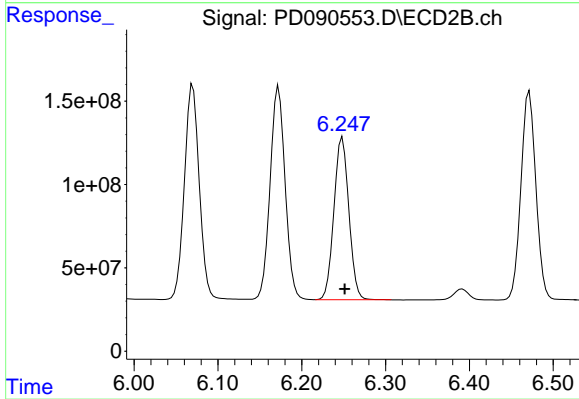
#17 4,4'-DDT

R.T.: 6.172 min
 Delta R.T.: -0.003 min
 Response: 1599286693
 Conc: 46.52 ng/ml



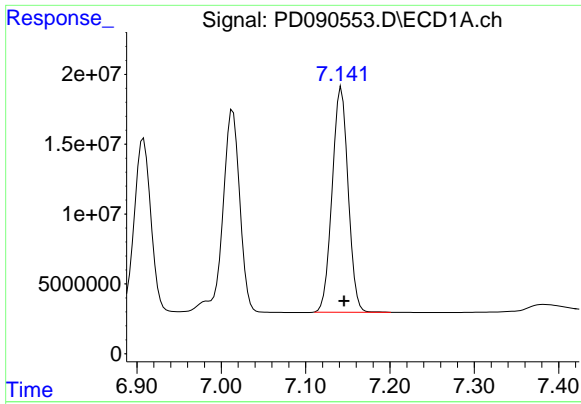
#18 Endrin aldehyde

R.T.: 6.908 min
 Delta R.T.: -0.003 min
 Response: 173533223
 Conc: 50.58 ng/ml



#18 Endrin aldehyde

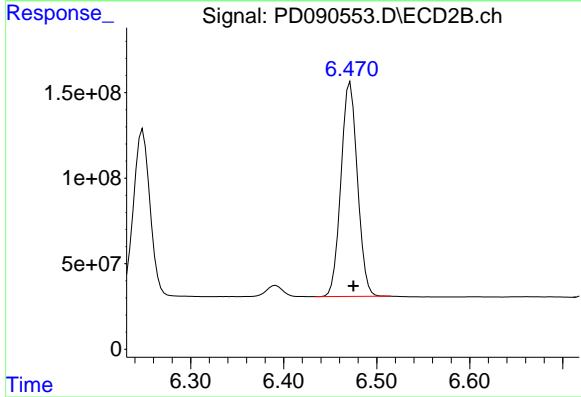
R.T.: 6.248 min
 Delta R.T.: -0.003 min
 Response: 1205177631
 Conc: 51.18 ng/ml



#19 Endosulfan Sulfate

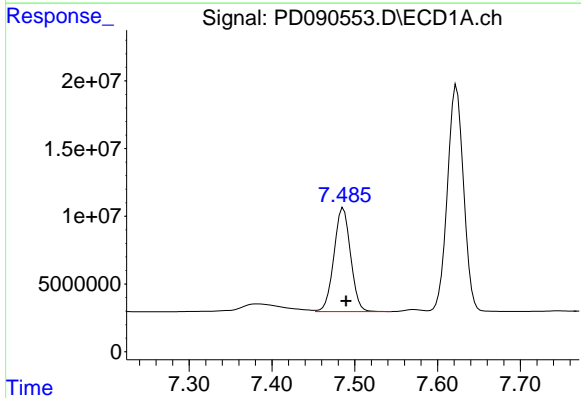
R.T.: 7.142 min
 Delta R.T.: -0.003 min
 Response: 211972795
 Conc: 46.08 ng/ml

Instrument :
 ECD_D
 ClientSampleId :
 PB170043BSD



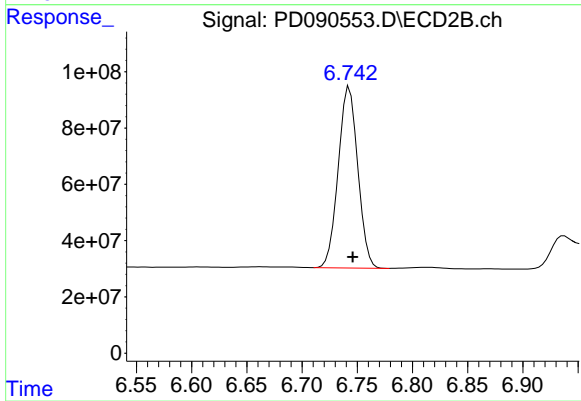
#19 Endosulfan Sulfate

R.T.: 6.472 min
 Delta R.T.: -0.003 min
 Response: 1544692026
 Conc: 47.25 ng/ml



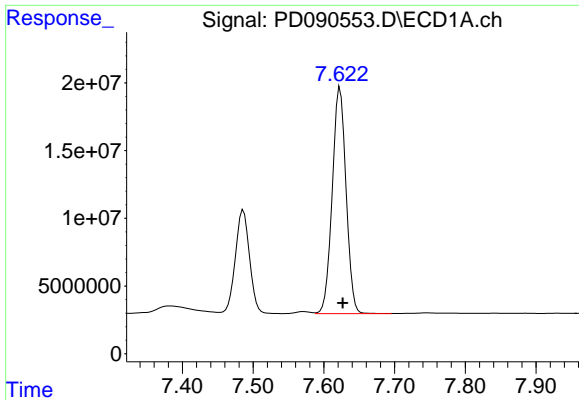
#20 Methoxychlor

R.T.: 7.486 min
 Delta R.T.: -0.003 min
 Response: 107202578
 Conc: 45.49 ng/ml



#20 Methoxychlor

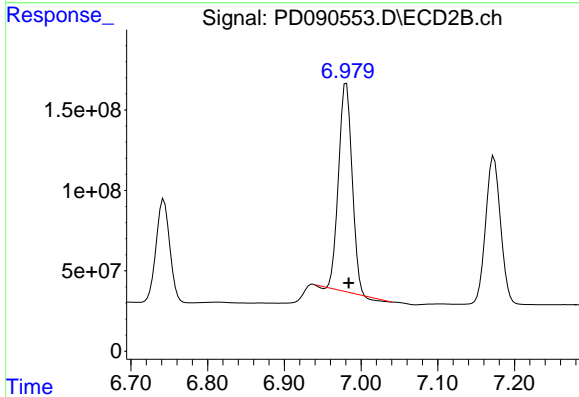
R.T.: 6.743 min
 Delta R.T.: -0.003 min
 Response: 794550915
 Conc: 45.66 ng/ml



#21 Endrin ketone

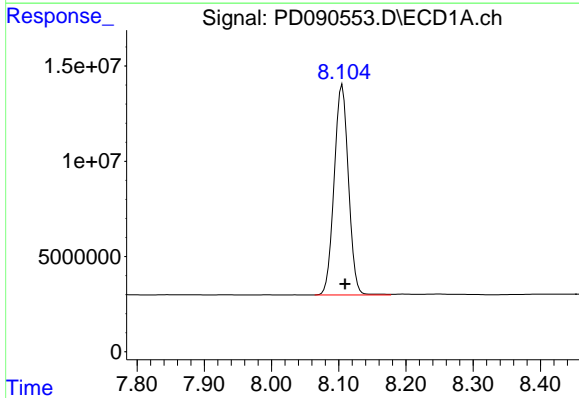
R.T.: 7.623 min
 Delta R.T.: -0.004 min
 Response: 226726257
 Conc: 45.83 ng/ml

Instrument :
 ECD_D
 ClientSampleId :
 PB170043BSD



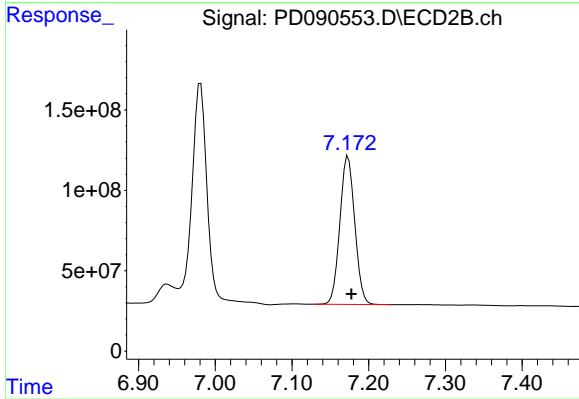
#21 Endrin ketone

R.T.: 6.981 min
 Delta R.T.: -0.003 min
 Response: 1559434273
 Conc: 43.19 ng/ml



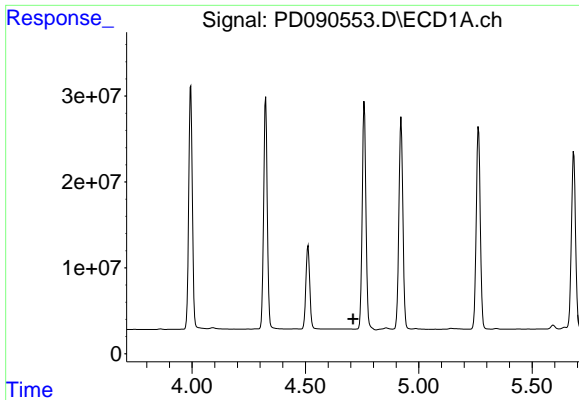
#22 Mirex

R.T.: 8.105 min
 Delta R.T.: -0.004 min
 Response: 161865780
 Conc: 43.69 ng/ml



#22 Mirex

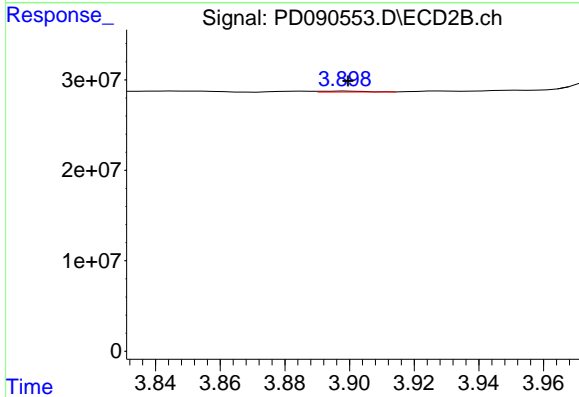
R.T.: 7.173 min
 Delta R.T.: -0.004 min
 Response: 1244596113
 Conc: 45.08 ng/ml



#23 Chlordane-1

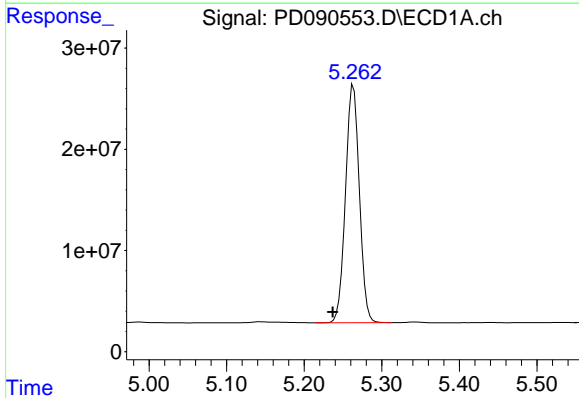
R.T.: 0.000 min
 Exp R.T.: 4.710 min
 Response: 0
 Conc: N.D.

Instrument :
 ECD_D
 ClientSampleId :
 PB170043BSD



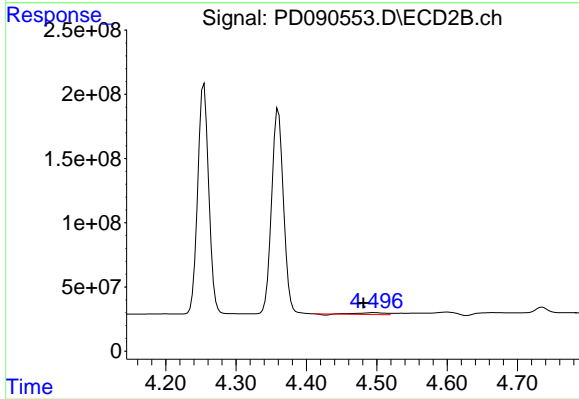
#23 Chlordane-1

R.T.: 3.899 min
 Delta R.T.: 0.000 min
 Response: 829695
 Conc: 0.69 ng/ml



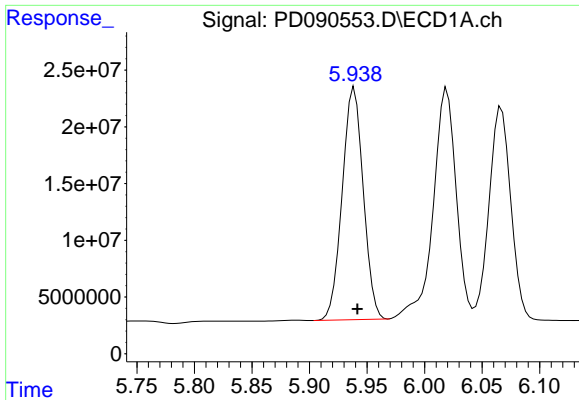
#24 Chlordane-2

R.T.: 5.263 min
 Delta R.T.: 0.027 min
 Response: 291728278
 Conc: 1359.43 ng/ml



#24 Chlordane-2

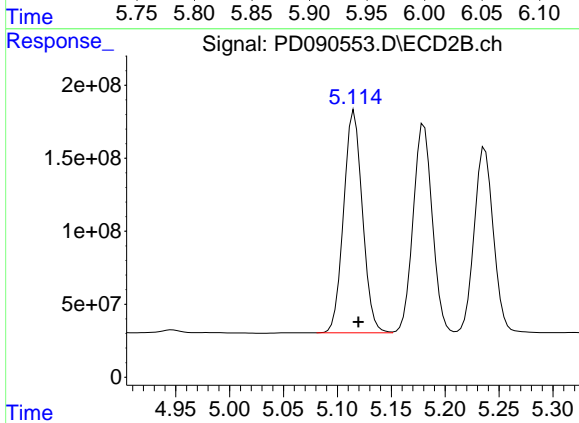
R.T.: 4.497 min
 Delta R.T.: 0.016 min
 Response: 34437745
 Conc: 27.54 ng/ml



#25 Chlordane-3

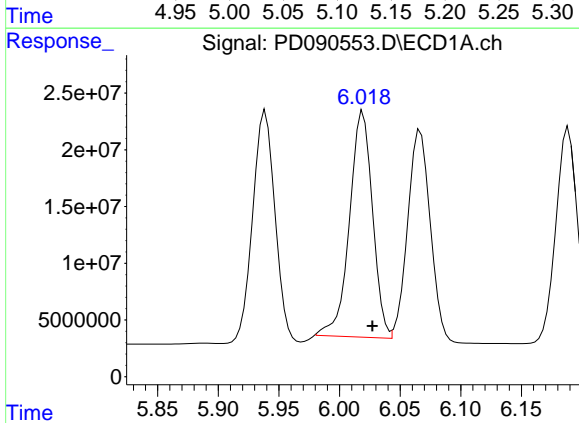
R.T.: 5.939 min
 Delta R.T.: -0.003 min
 Response: 261927282
 Conc: 312.93 ng/ml

Instrument :
 ECD_D
 ClientSampleId :
 PB170043BSD



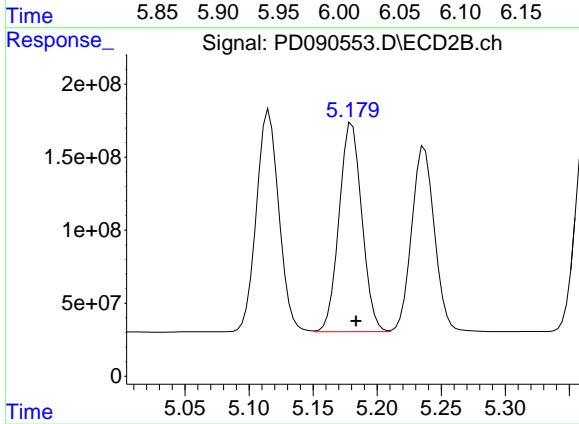
#25 Chlordane-3

R.T.: 5.116 min
 Delta R.T.: -0.004 min
 Response: 1848386816
 Conc: 487.63 ng/ml



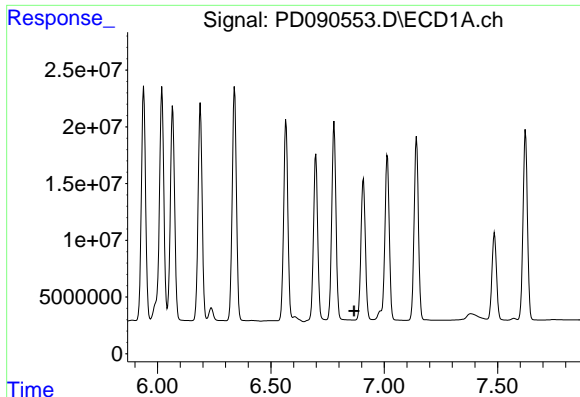
#26 Chlordane-4

R.T.: 6.019 min
 Delta R.T.: -0.008 min
 Response: 263554599
 Conc: 258.25 ng/ml



#26 Chlordane-4

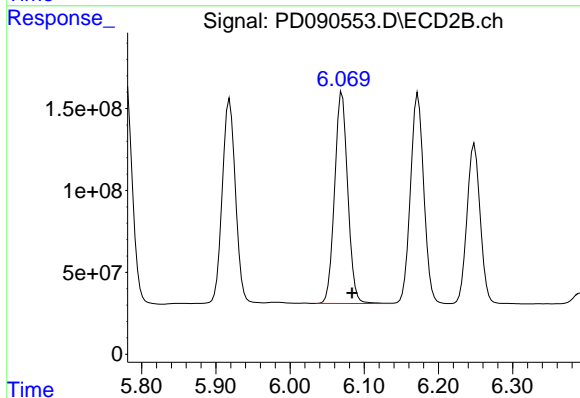
R.T.: 5.180 min
 Delta R.T.: -0.003 min
 Response: 1769560873
 Conc: 543.47 ng/ml



#27 Chlordane-5

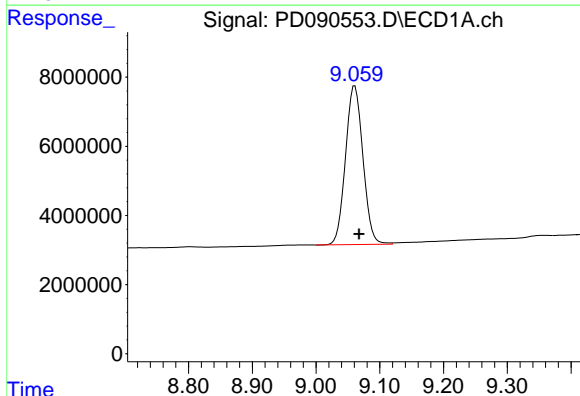
R.T.: 0.000 min
 Exp R.T.: 6.867 min
 Response: 0
 Conc: N.D.

Instrument :
 ECD_D
 ClientSampleId :
 PB170043BSD



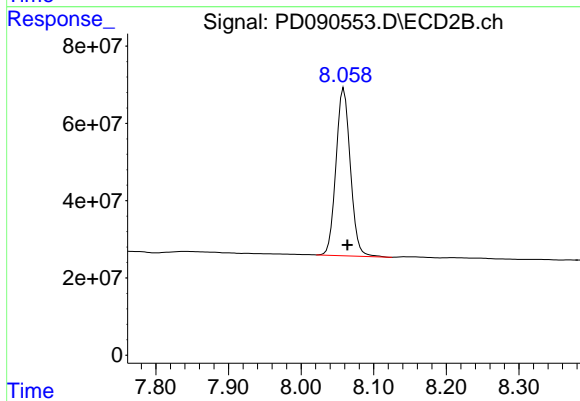
#27 Chlordane-5

R.T.: 6.070 min
 Delta R.T.: -0.013 min
 Response: 1591360195
 Conc: 1048.60 ng/ml



#28 Decachlorobiphenyl

R.T.: 9.061 min
 Delta R.T.: -0.007 min
 Response: 87381711
 Conc: 18.11 ng/ml



#28 Decachlorobiphenyl

R.T.: 8.059 min
 Delta R.T.: -0.005 min
 Response: 595302205
 Conc: 18.37 ng/ml