

Data Path : Z:\pestpcbsrv\HPCHEM1\ECD_D\Data\PD101125\
 Data File : PD090554.D
 Signal(s) : Signal #1: ECD1A.ch Signal #2: ECD2B.ch
 Acq On : 09 Oct 2025 16:47
 Operator : AR\AJ
 Sample : PB170010TB
 Misc :
 ALS Vial : 8 Sample Multiplier: 1

Instrument :
 ECD_D
 ClientSampleId :
 PB170010TB

Integration File signal 1: autoint1.e
 Integration File signal 2: autoint2.e
 Quant Time: Oct 10 08:25:22 2025
 Quant Method : Z:\pestpcbsrv\HPCHEM1\ECD_D\Method\PD091825.M
 Quant Title : GC Extractables
 QLast Update : Fri Sep 19 05:52:38 2025
 Response via : Initial Calibration
 Integrator: ChemStation

Volume Inj. : 1 µl
 Signal #1 Phase : ZB-MR2 Signal #2 Phase: ZB-MR2
 Signal #1 Info : 30M x 0.32mm x0.5 Signal #2 Info : 30M x 0.32mm x 0.25µm

	Compound	RT#1	RT#2	Resp#1	Resp#2	ng/ml	ng/ml

System Monitoring Compounds							
1)	SA Tetrachlo...	3.545	2.875	51669976	461.3E6	15.896	16.804
28)	SA Decachlor...	9.062	8.060	83188951	556.0E6	17.241	17.152
Target Compounds							
2)	A alpha-BHC	0.000	3.394	0	354648	N.D.	0.008 #
3)	MA gamma-BHC...	0.000	3.716	0	888307	N.D.	0.022 #
4)	MA Heptachlor	4.924	4.085	645451	878371	0.098	0.022 #
5)	MB Aldrin	0.000	4.354	0	468974	N.D.	0.012 #
6)	B beta-BHC	0.000	4.042f	0	1074884	N.D.	0.062 #
7)	B delta-BHC	4.773	4.258	1657077	678534	0.257	0.016 #
8)	B Heptachlo...	0.000	4.855	0	2212381	N.D.	0.060 #
9)	A Endosulfan I	0.000	5.244	0	242409	N.D.	0.007 #
10)	B gamma-Chl...	0.000	5.116	0	709369	N.D.	0.018 #
12)	B 4,4'-DDE	0.000	5.382	0	1687995	N.D.	0.044 #
13)	MA Dieldrin	0.000	5.505	0	621458	N.D.	0.016 #
14)	MA Endrin	0.000	5.785	0	41595027	N.D.	1.161 #
15)	B Endosulfa...	0.000	6.086	0	662288	N.D.	0.020 #
16)	A 4,4'-DDD	0.000	5.903f	0	1022999	N.D.	0.032 #
17)	MA 4,4'-DDT	7.024	6.161	274655	634753	0.062	0.018 #
18)	B Endrin al...	6.926	6.258	2366933	868594	0.690	0.037 #
19)	B Endosulfa...	0.000	6.495f	0	207672	N.D.	0.006 #
20)	A Methoxychlor	0.000	6.726f	0	1141420	N.D.	0.066 #
22)	Mirex	0.000	7.168	0	2495735	N.D.	0.090 #
23)	Chlordane-1	0.000	3.900	0	1006163	N.D.	0.836 #
24)	Chlordane-2	0.000	4.480	0	2604299	N.D.	2.083 #
25)	Chlordane-3	0.000	5.116	0	709369	N.D.	0.187 #
26)	Chlordane-4	0.000	5.178	0	660525	N.D.	0.203 #
27)	Chlordane-5	6.863	6.086	506401	662288	2.844	0.436 #

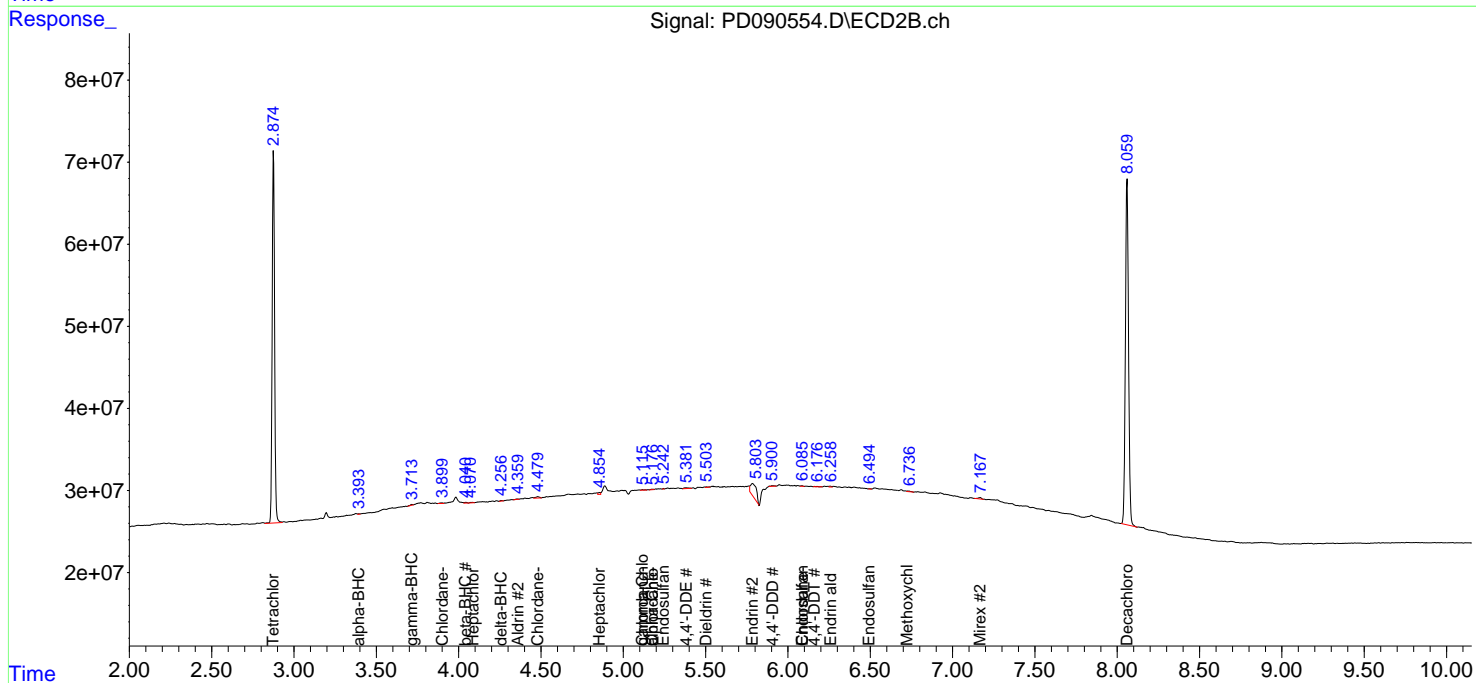
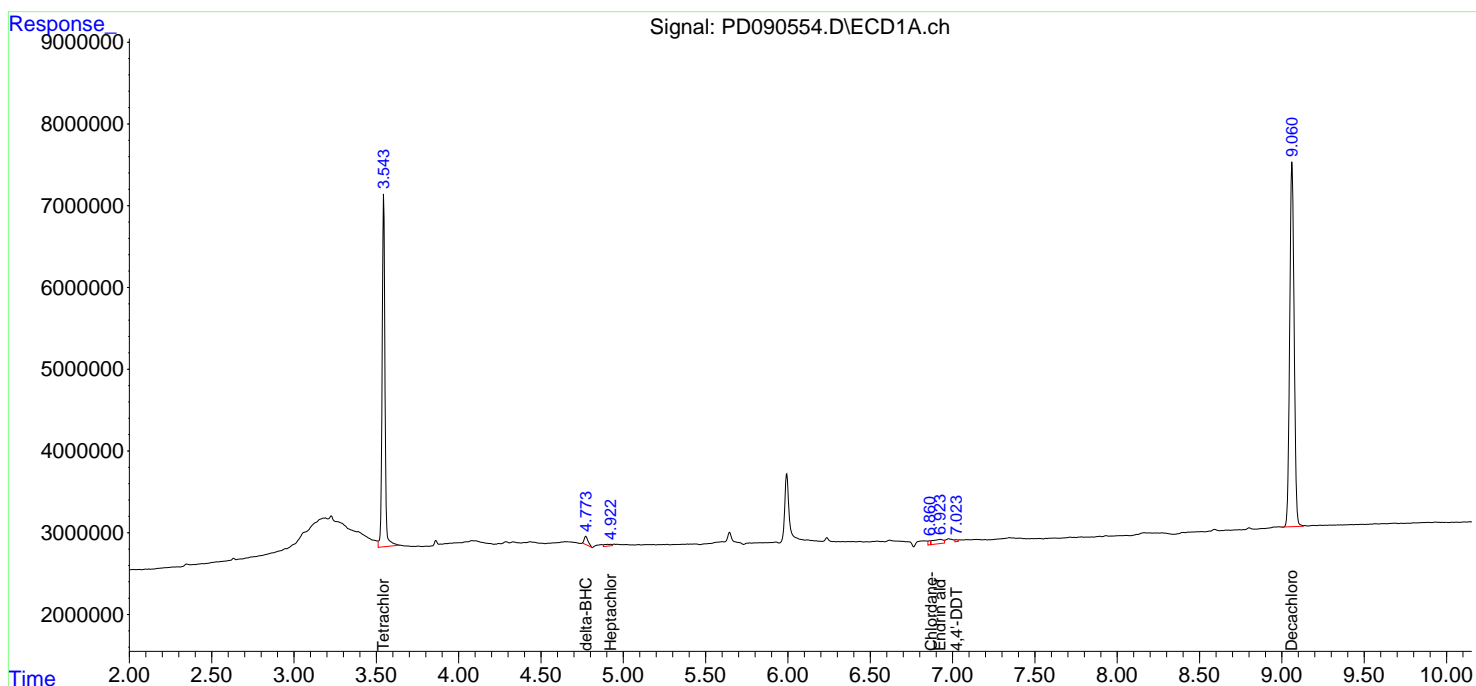
(f)=RT Delta > 1/2 Window (#)=Amounts differ by > 25% (m)=manual int.

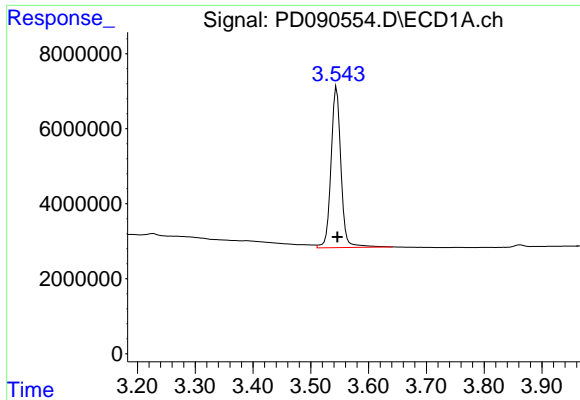
Data Path : Z:\pestpcbsrv\HPCHEM1\ECD_D\Data\PD101125\
 Data File : PD090554.D
 Signal(s) : Signal #1: ECD1A.ch Signal #2: ECD2B.ch
 Acq On : 09 Oct 2025 16:47
 Operator : AR\AJ
 Sample : PB170010TB
 Misc :
 ALS Vial : 8 Sample Multiplier: 1

Instrument :
 ECD_D
 ClientSampleId :
 PB170010TB

Integration File signal 1: autoint1.e
 Integration File signal 2: autoint2.e
 Quant Time: Oct 10 08:25:22 2025
 Quant Method : Z:\pestpcbsrv\HPCHEM1\ECD_D\Method\PD091825.M
 Quant Title : GC Extractables
 QLast Update : Fri Sep 19 05:52:38 2025
 Response via : Initial Calibration
 Integrator: ChemStation

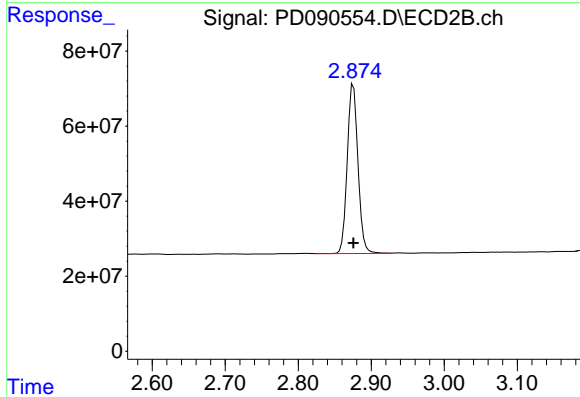
Volume Inj. : 1 µl
 Signal #1 Phase : ZB-MR1 Signal #2 Phase: ZB-MR2
 Signal #1 Info : 30M x 0.32mm x0.5 Signal #2 Info : 30M x 0.32mm x 0.25µm



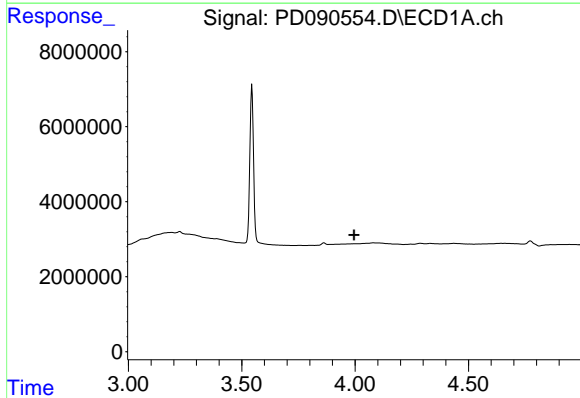


#1 Tetrachloro-m-xylene
 R.T.: 3.545 min
 Delta R.T.: -0.001 min
 Response: 51669976
 Conc: 15.90 ng/ml

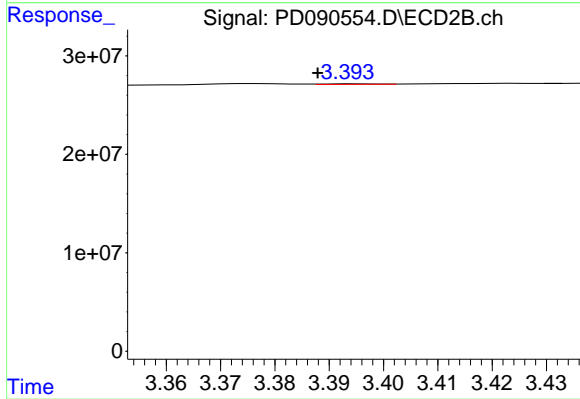
Instrument :
 ECD_D
 ClientSampleId :
 PB170010TB



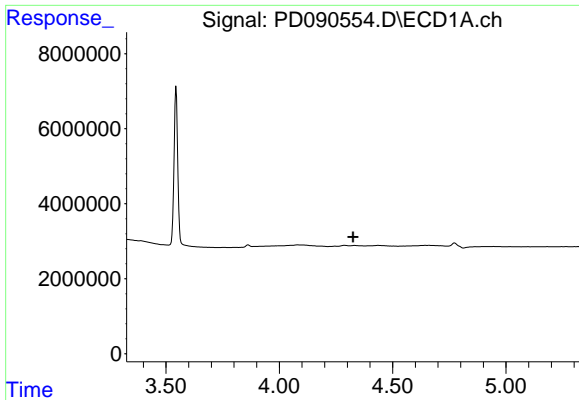
#1 Tetrachloro-m-xylene
 R.T.: 2.875 min
 Delta R.T.: 0.000 min
 Response: 461267575
 Conc: 16.80 ng/ml



#2 alpha-BHC
 R.T.: 0.000 min
 Exp R.T. : 3.995 min
 Response: 0
 Conc: N.D.



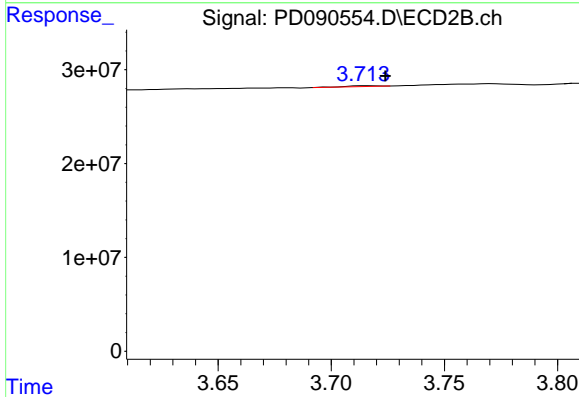
#2 alpha-BHC
 R.T.: 3.394 min
 Delta R.T.: 0.007 min
 Response: 354648
 Conc: 0.01 ng/ml



#3 gamma-BHC (Lindane)

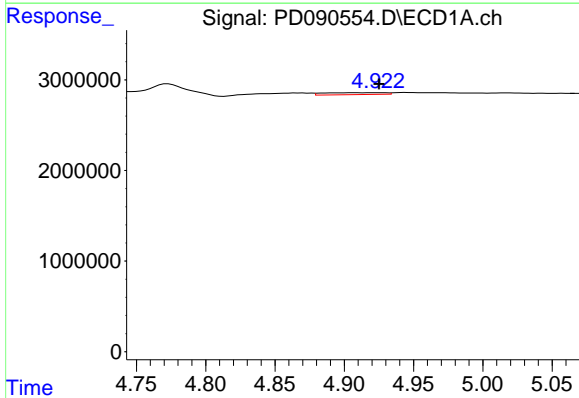
R.T.: 0.000 min
 Exp R.T.: 4.326 min
 Response: 0
 Conc: N.D.

Instrument :
 ECD_D
 ClientSampleId :
 PB170010TB



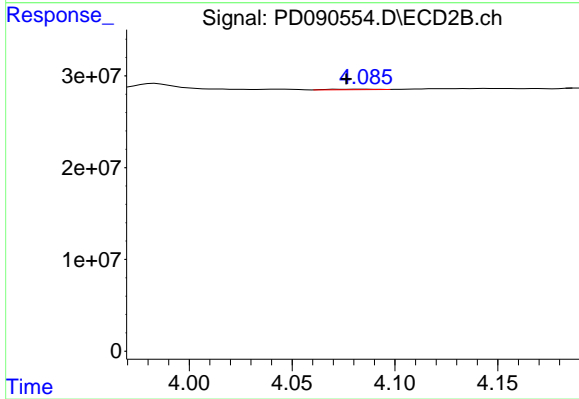
#3 gamma-BHC (Lindane)

R.T.: 3.716 min
 Delta R.T.: -0.008 min
 Response: 888307
 Conc: 0.02 ng/ml



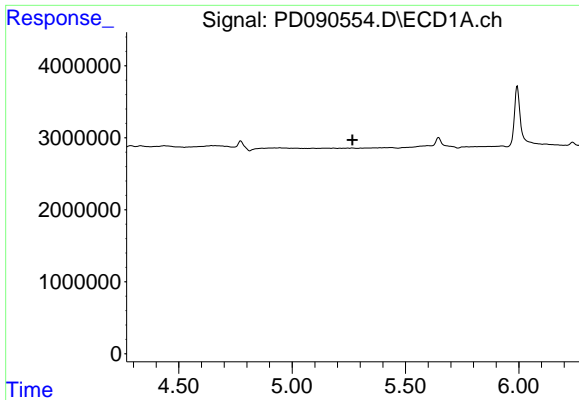
#4 Heptachlor

R.T.: 4.924 min
 Delta R.T.: -0.001 min
 Response: 645451
 Conc: 0.10 ng/ml



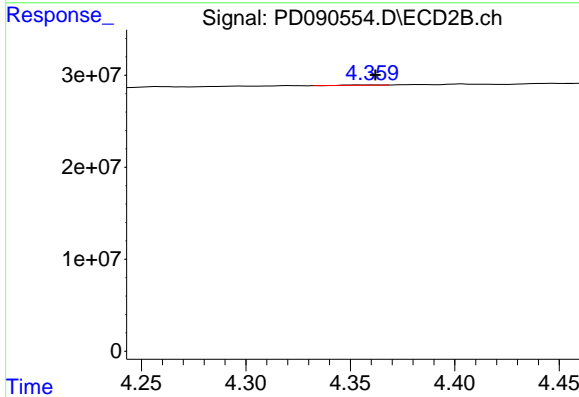
#4 Heptachlor

R.T.: 4.085 min
 Delta R.T.: 0.009 min
 Response: 878371
 Conc: 0.02 ng/ml

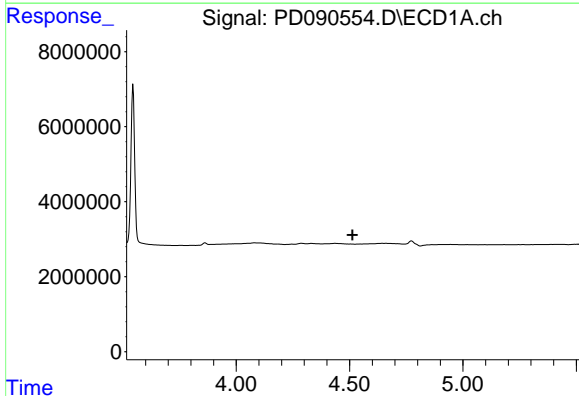


#5 Aldrin
 R.T.: 0.000 min
 Exp R.T.: 5.266 min
 Response: 0
 Conc: N.D.

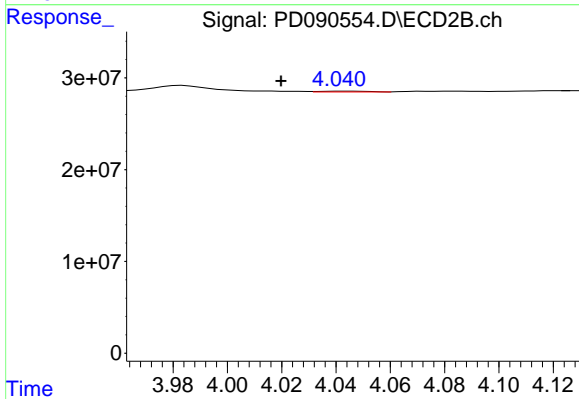
Instrument :
 ECD_D
 ClientSampleId :
 PB170010TB



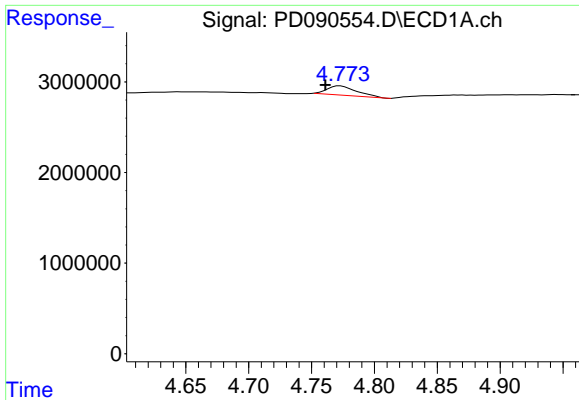
#5 Aldrin
 R.T.: 4.354 min
 Delta R.T.: -0.008 min
 Response: 468974
 Conc: 0.01 ng/ml



#6 beta-BHC
 R.T.: 0.000 min
 Exp R.T.: 4.513 min
 Response: 0
 Conc: N.D.



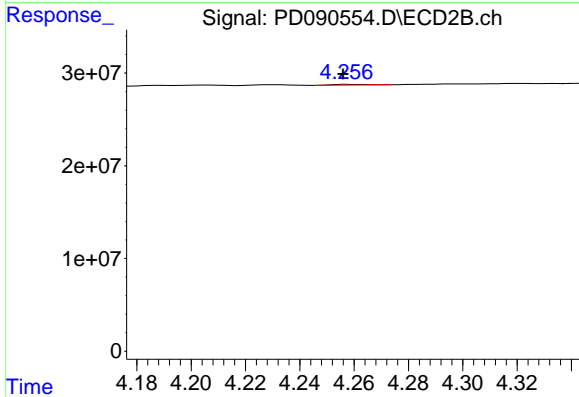
#6 beta-BHC
 R.T.: 4.042 min
 Delta R.T.: 0.022 min
 Response: 1074884
 Conc: 0.06 ng/ml



#7 delta-BHC

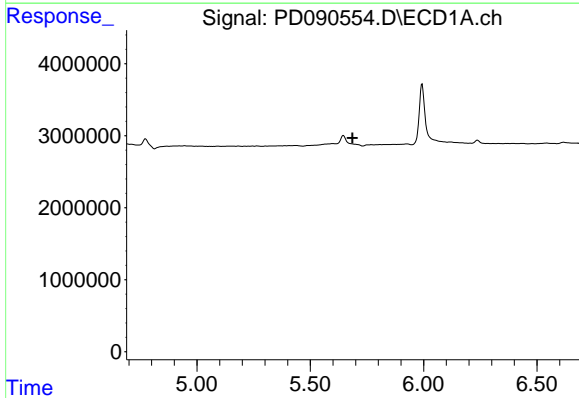
R.T.: 4.773 min
 Delta R.T.: 0.012 min
 Response: 1657077
 Conc: 0.26 ng/ml

Instrument :
 ECD_D
 ClientSampleId :
 PB170010TB



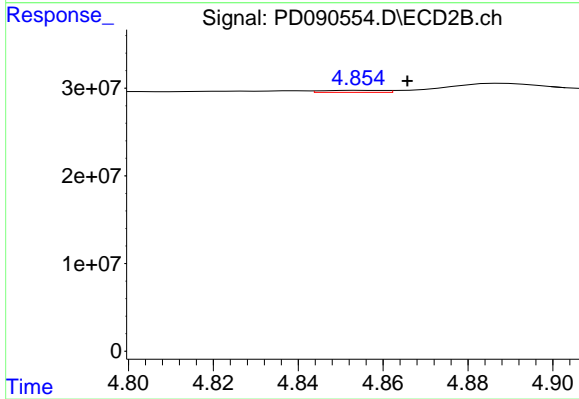
#7 delta-BHC

R.T.: 4.258 min
 Delta R.T.: 0.002 min
 Response: 678534
 Conc: 0.02 ng/ml



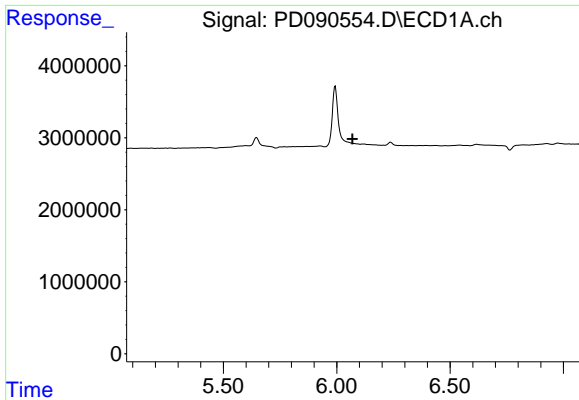
#8 Heptachlor epoxide

R.T.: 0.000 min
 Exp R.T. : 5.686 min
 Response: 0
 Conc: N.D.



#8 Heptachlor epoxide

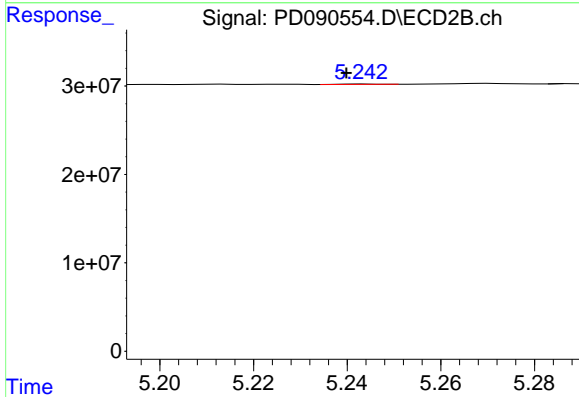
R.T.: 4.855 min
 Delta R.T.: -0.010 min
 Response: 2212381
 Conc: 0.06 ng/ml



#9 Endosulfan I

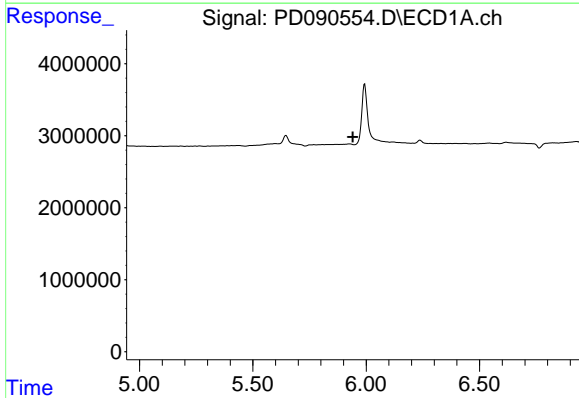
R.T.: 0.000 min
 Exp R.T.: 6.070 min
 Response: 0
 Conc: N.D.

Instrument :
 ECD_D
 ClientSampleId :
 PB170010TB



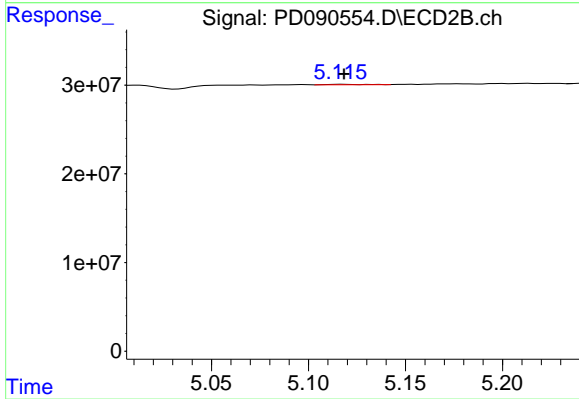
#9 Endosulfan I

R.T.: 5.244 min
 Delta R.T.: 0.004 min
 Response: 242409
 Conc: 0.01 ng/ml



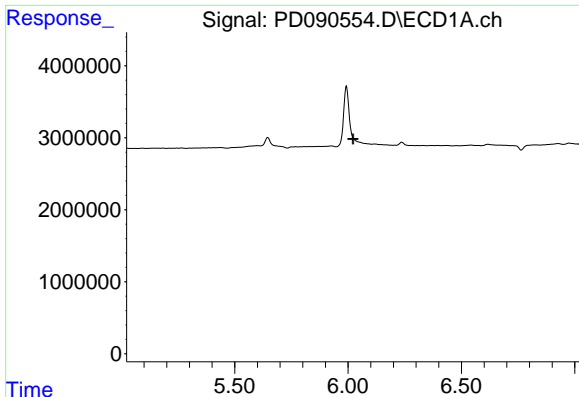
#10 gamma-Chlordane

R.T.: 0.000 min
 Exp R.T.: 5.942 min
 Response: 0
 Conc: N.D.



#10 gamma-Chlordane

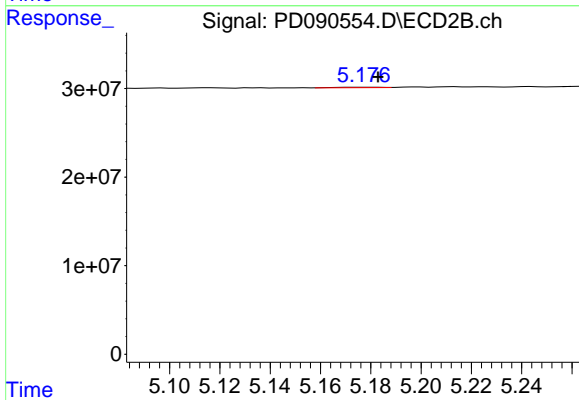
R.T.: 5.116 min
 Delta R.T.: -0.002 min
 Response: 709369
 Conc: 0.02 ng/ml



#11 alpha-Chlordane

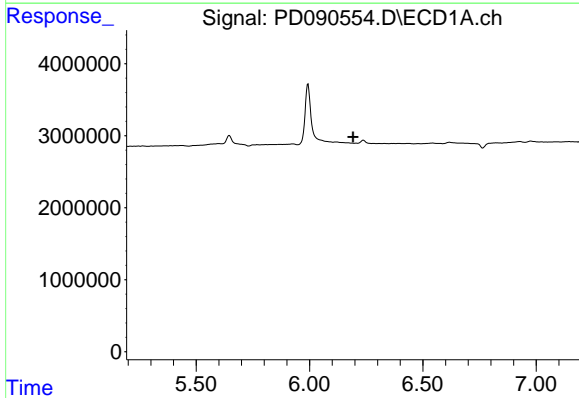
R.T.: 5.993 min
 Delta R.T.: -0.029 min
 Response: -4632242
 Conc: N.D.

Instrument :
 ECD_D
 ClientSampleId :
 PB170010TB



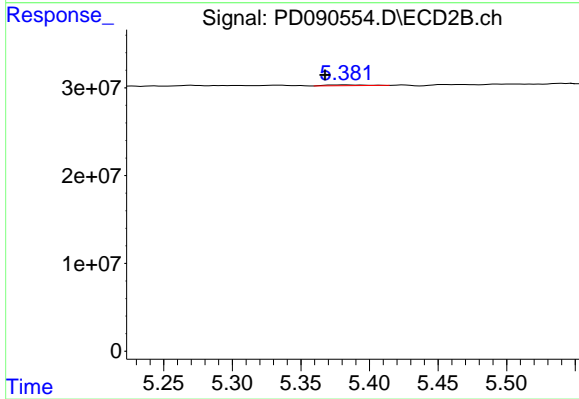
#11 alpha-Chlordane

R.T.: 5.178 min
 Delta R.T.: -0.005 min
 Response: 660525
 Conc: 0.02 ng/ml



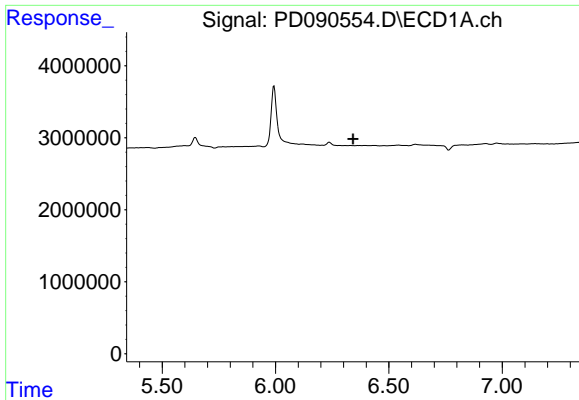
#12 4,4'-DDE

R.T.: 0.000 min
 Exp R.T. : 6.192 min
 Response: 0
 Conc: N.D.



#12 4,4'-DDE

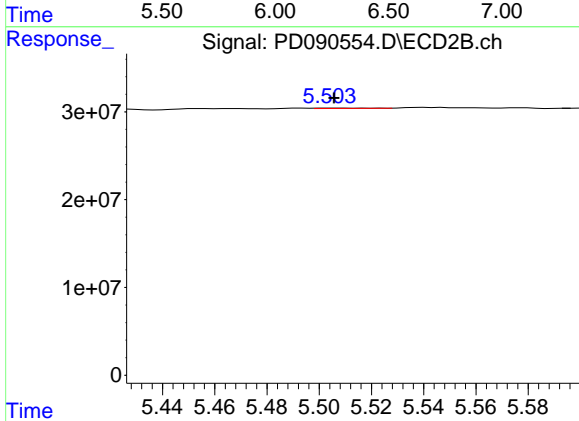
R.T.: 5.382 min
 Delta R.T.: 0.014 min
 Response: 1687995
 Conc: 0.04 ng/ml



#13 Dieldrin

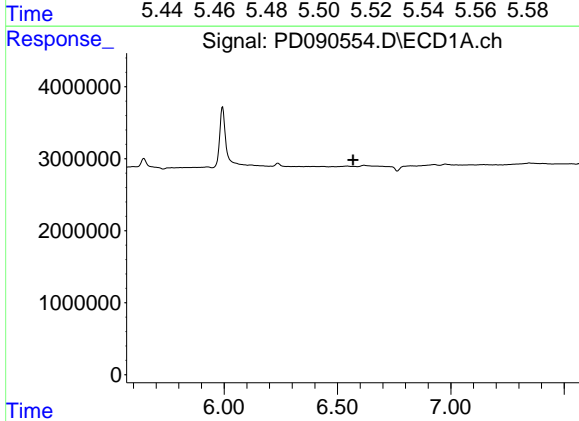
R.T.: 0.000 min
 Exp R.T. : 6.343 min
 Response: 0
 Conc: N.D.

Instrument :
 ECD_D
 ClientSampleId :
 PB170010TB



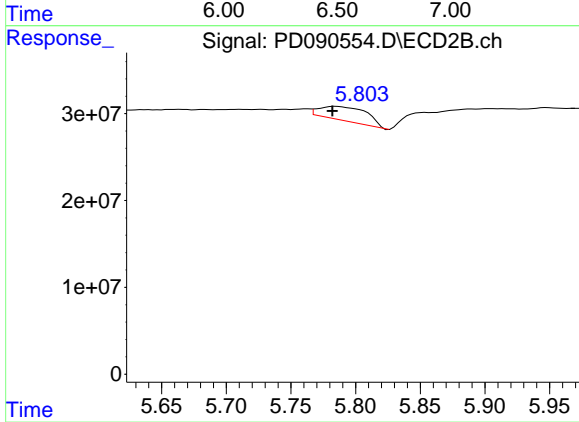
#13 Dieldrin

R.T.: 5.505 min
 Delta R.T.: 0.000 min
 Response: 621458
 Conc: 0.02 ng/ml



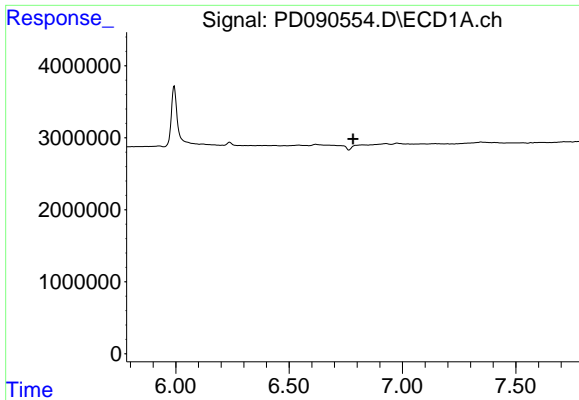
#14 Endrin

R.T.: 0.000 min
 Exp R.T. : 6.569 min
 Response: 0
 Conc: N.D.



#14 Endrin

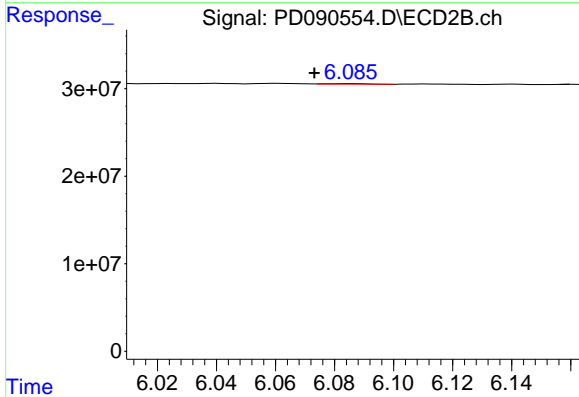
R.T.: 5.785 min
 Delta R.T.: 0.003 min
 Response: 41595027
 Conc: 1.16 ng/ml



#15 Endosulfan II

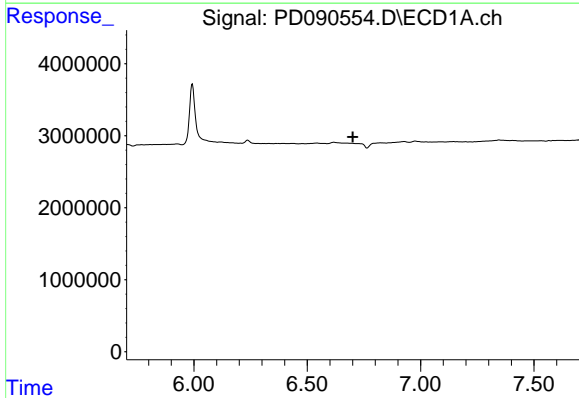
R.T.: 0.000 min
 Exp R.T.: 6.782 min
 Response: 0
 Conc: N.D.

Instrument :
 ECD_D
 ClientSampleId :
 PB170010TB



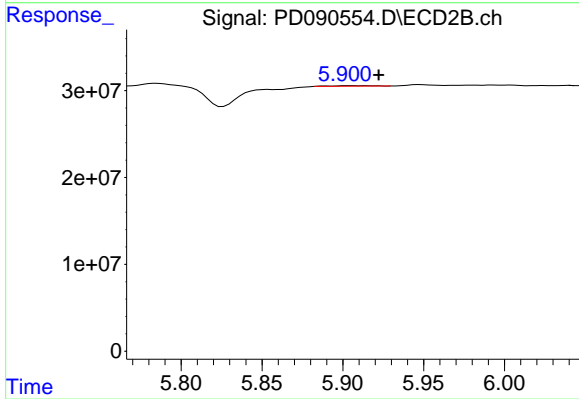
#15 Endosulfan II

R.T.: 6.086 min
 Delta R.T.: 0.012 min
 Response: 662288
 Conc: 0.02 ng/ml



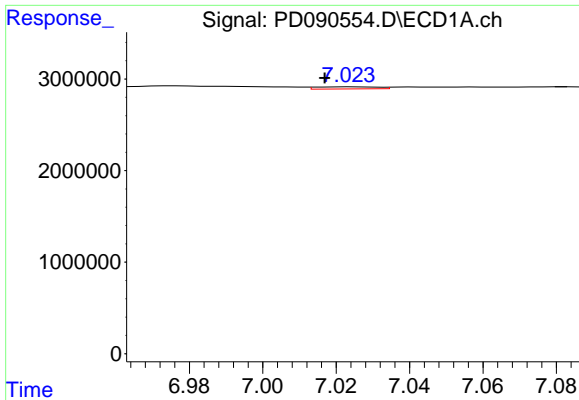
#16 4,4'-DDD

R.T.: 0.000 min
 Exp R.T.: 6.701 min
 Response: 0
 Conc: N.D.



#16 4,4'-DDD

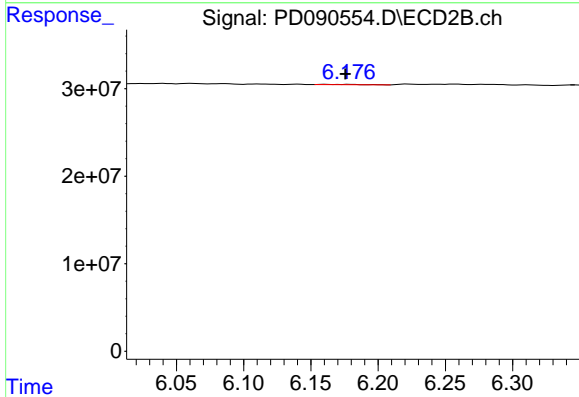
R.T.: 5.903 min
 Delta R.T.: -0.019 min
 Response: 1022999
 Conc: 0.03 ng/ml



#17 4,4'-DDT

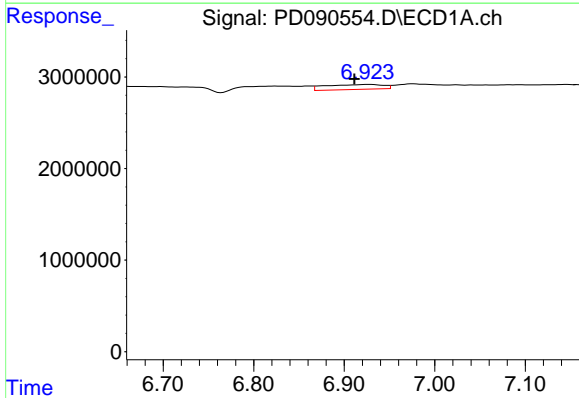
R.T.: 7.024 min
 Delta R.T.: 0.007 min
 Response: 274655
 Conc: 0.06 ng/ml

Instrument :
 ECD_D
 ClientSampleId :
 PB170010TB



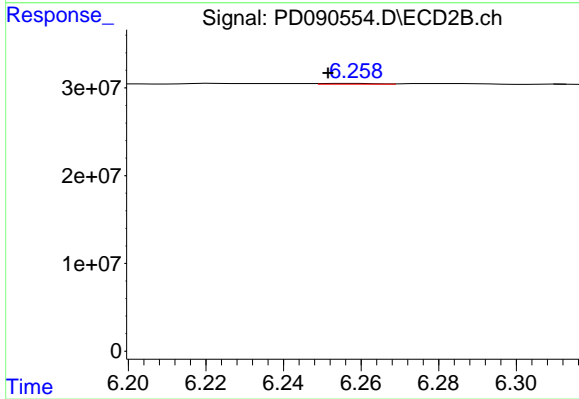
#17 4,4'-DDT

R.T.: 6.161 min
 Delta R.T.: -0.014 min
 Response: 634753
 Conc: 0.02 ng/ml



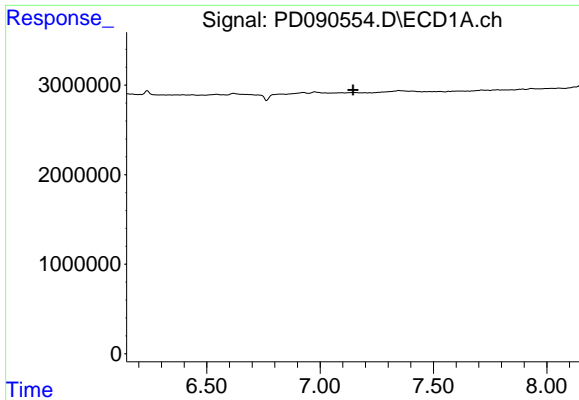
#18 Endrin aldehyde

R.T.: 6.926 min
 Delta R.T.: 0.015 min
 Response: 2366933
 Conc: 0.69 ng/ml



#18 Endrin aldehyde

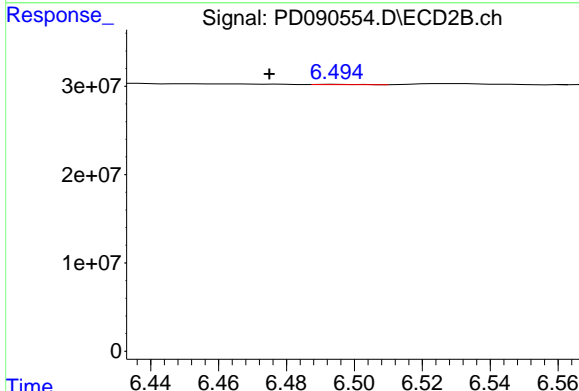
R.T.: 6.258 min
 Delta R.T.: 0.007 min
 Response: 868594
 Conc: 0.04 ng/ml



#19 Endosulfan Sulfate

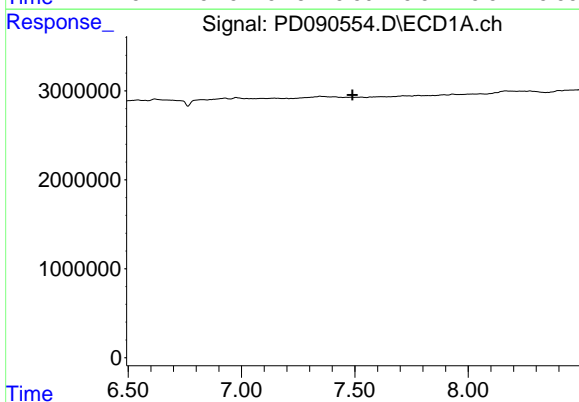
R.T.: 0.000 min
 Exp R.T.: 7.146 min
 Response: 0
 Conc: N.D.

Instrument : ECD_D
 ClientSampleId : PB170010TB



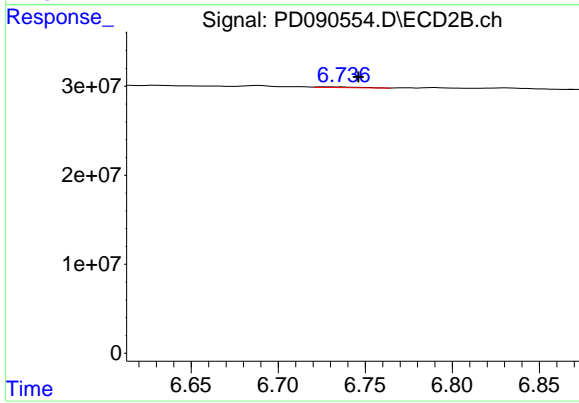
#19 Endosulfan Sulfate

R.T.: 6.495 min
 Delta R.T.: 0.020 min
 Response: 207672
 Conc: 0.01 ng/ml



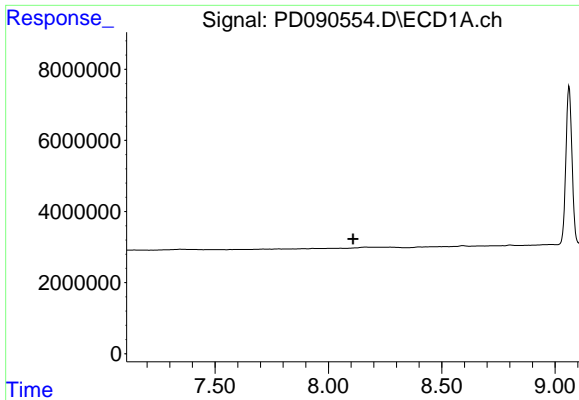
#20 Methoxychlor

R.T.: 0.000 min
 Exp R.T.: 7.490 min
 Response: 0
 Conc: N.D.



#20 Methoxychlor

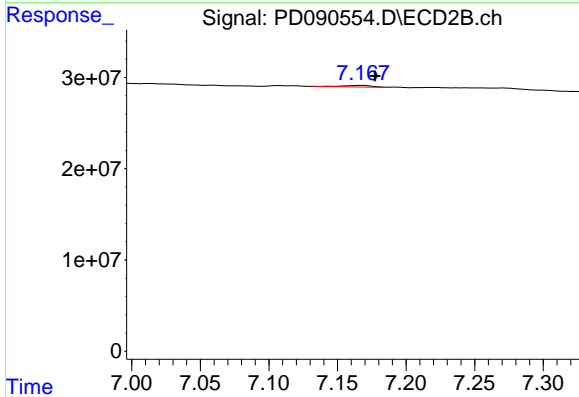
R.T.: 6.726 min
 Delta R.T.: -0.020 min
 Response: 1141420
 Conc: 0.07 ng/ml



#22 Mirex

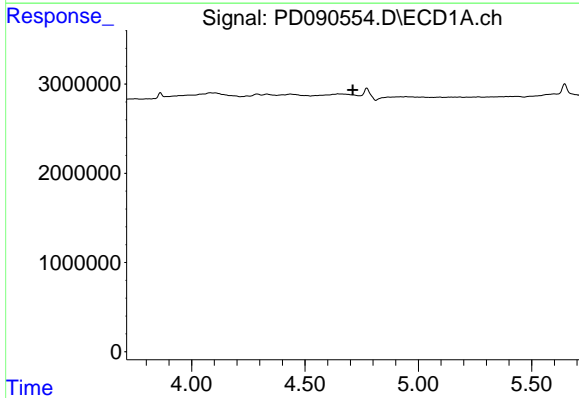
R.T.: 0.000 min
 Exp R.T.: 8.109 min
 Response: 0
 Conc: N.D.

Instrument :
 ECD_D
 ClientSampleId :
 PB170010TB



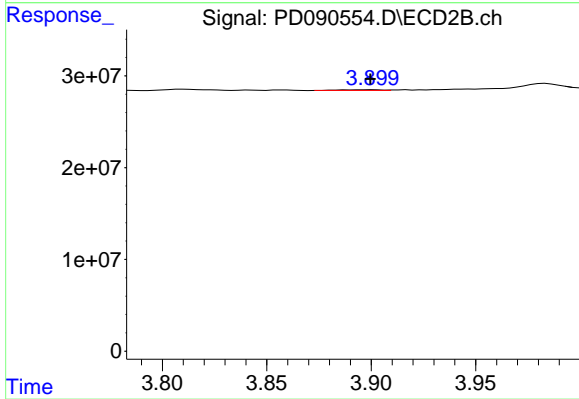
#22 Mirex

R.T.: 7.168 min
 Delta R.T.: -0.009 min
 Response: 2495735
 Conc: 0.09 ng/ml



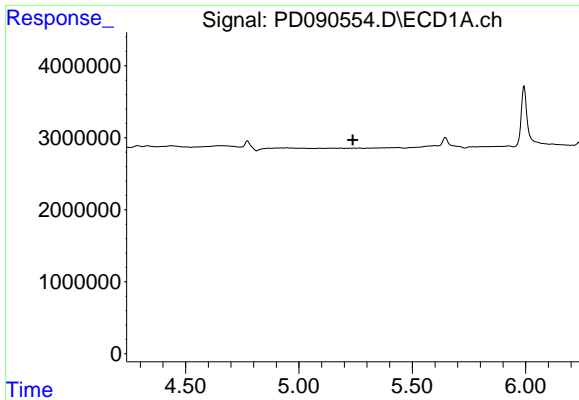
#23 Chlordane-1

R.T.: 0.000 min
 Exp R.T.: 4.710 min
 Response: 0
 Conc: N.D.



#23 Chlordane-1

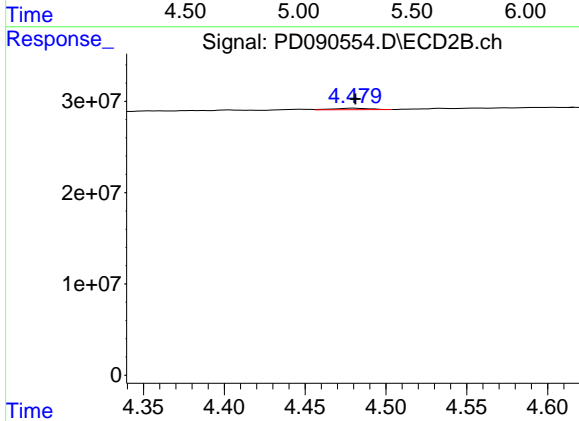
R.T.: 3.900 min
 Delta R.T.: 0.000 min
 Response: 1006163
 Conc: 0.84 ng/ml



#24 Chlordane-2

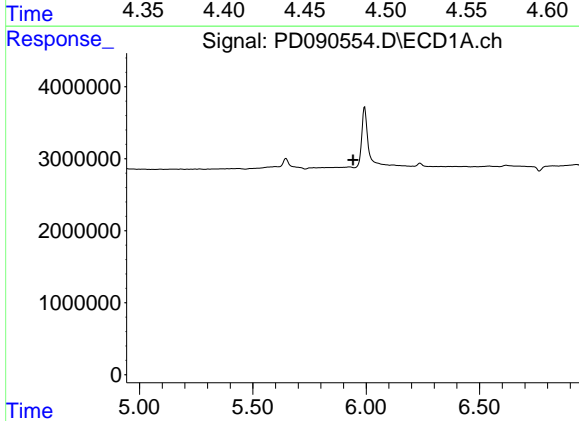
R.T.: 0.000 min
 Exp R.T.: 5.237 min
 Response: 0
 Conc: N.D.

Instrument :
 ECD_D
 ClientSampleId :
 PB170010TB



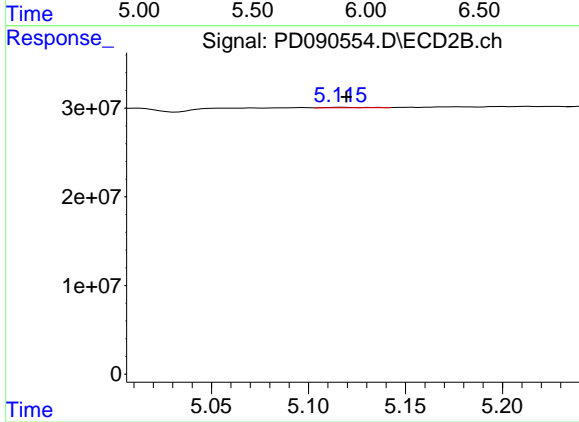
#24 Chlordane-2

R.T.: 4.480 min
 Delta R.T.: 0.000 min
 Response: 2604299
 Conc: 2.08 ng/ml



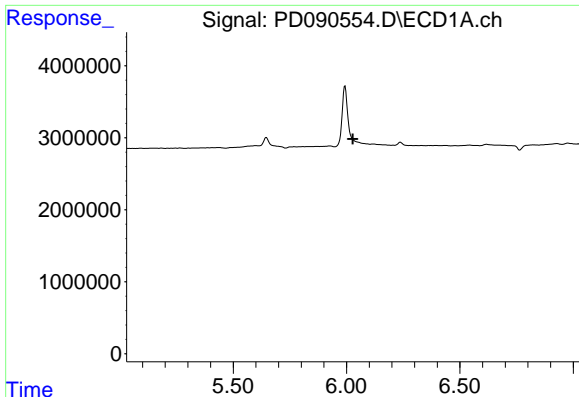
#25 Chlordane-3

R.T.: 0.000 min
 Exp R.T.: 5.942 min
 Response: 0
 Conc: N.D.



#25 Chlordane-3

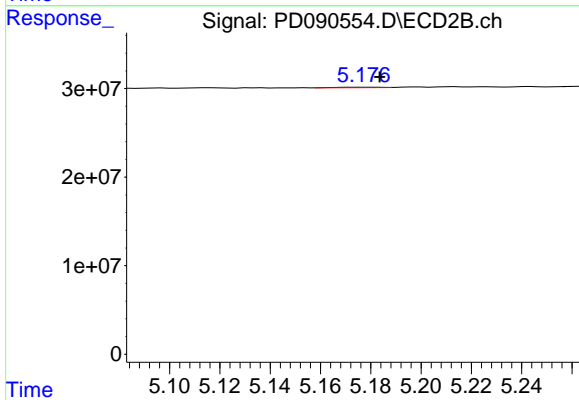
R.T.: 5.116 min
 Delta R.T.: -0.003 min
 Response: 709369
 Conc: 0.19 ng/ml



#26 Chlordane-4

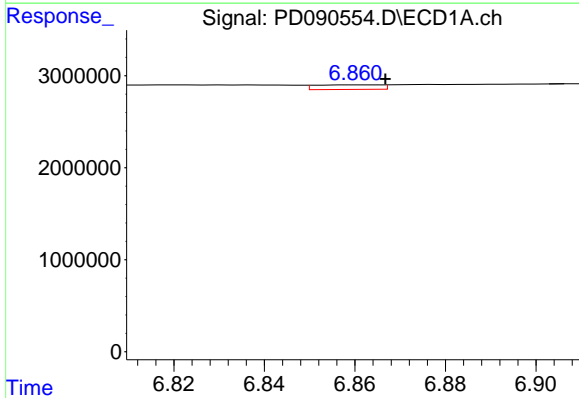
R.T.: 0.000 min
 Exp R.T.: 6.027 min
 Response: 0
 Conc: N.D.

Instrument :
 ECD_D
 ClientSampleId :
 PB170010TB



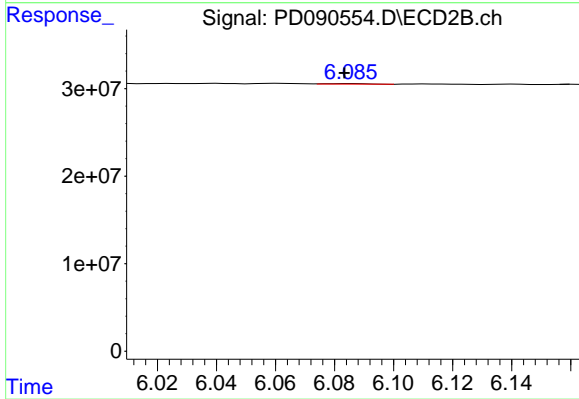
#26 Chlordane-4

R.T.: 5.178 min
 Delta R.T.: -0.006 min
 Response: 660525
 Conc: 0.20 ng/ml



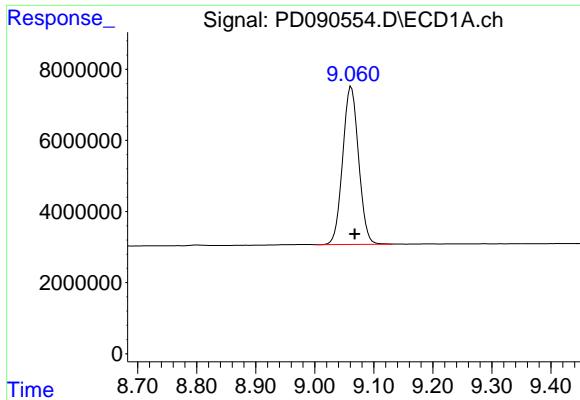
#27 Chlordane-5

R.T.: 6.863 min
 Delta R.T.: -0.004 min
 Response: 506401
 Conc: 2.84 ng/ml



#27 Chlordane-5

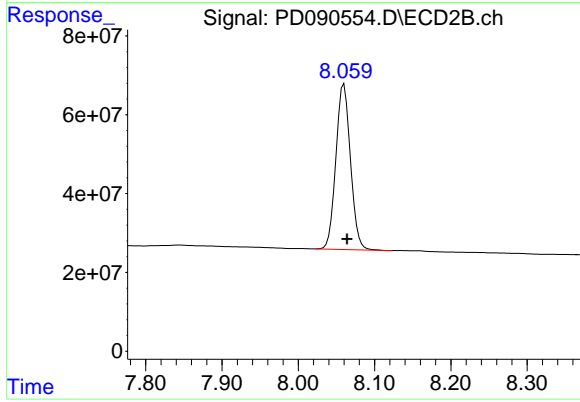
R.T.: 6.086 min
 Delta R.T.: 0.002 min
 Response: 662288
 Conc: 0.44 ng/ml



#28 Decachlorobiphenyl

R.T.: 9.062 min
Delta R.T.: -0.006 min
Response: 83188951
Conc: 17.24 ng/ml

Instrument :
ECD_D
ClientSampleId :
PB170010TB



#28 Decachlorobiphenyl

R.T.: 8.060 min
Delta R.T.: -0.004 min
Response: 55988297
Conc: 17.15 ng/ml