

Data Path : Z:\pestpcbsrv\HPCHEM1\ECD_D\Data\PD102119\
 Data File : PD055477.D
 Signal(s) : Signal #1: ECD1A.ch Signal #2: ECD2B.ch
 Acq On : 21 Oct 2019 16:05
 Operator : SG\AJ
 Sample : K5262-02DL2 100X
 Misc :
 ALS Vial : 13 Sample Multiplier: 1

Instrument :
 ECD_D
 ClientSampleID :
 BFB69DL2

Integration File signal 1: autoint1.e
 Integration File signal 2: autoint2.e
 Quant Time: Oct 22 03:59:44 2019
 Quant Method : Z:\pestpcbsrv\HPCHEM1\ECD_D\Method\PD101819CLP.M
 Quant Title : GC Extractables
 QLast Update : Sat Oct 19 00:42:03 2019
 Response via : Initial Calibration
 Integrator: ChemStation

Volume Inj. : 1 µl
 Signal #1 Phase : ZB-MR2 Signal #2 Phase: ZB-MR1
 Signal #1 Info : 30M x 0.32mm x0.2 Signal #2 Info : 30M x 0.32mm x 0.50µm

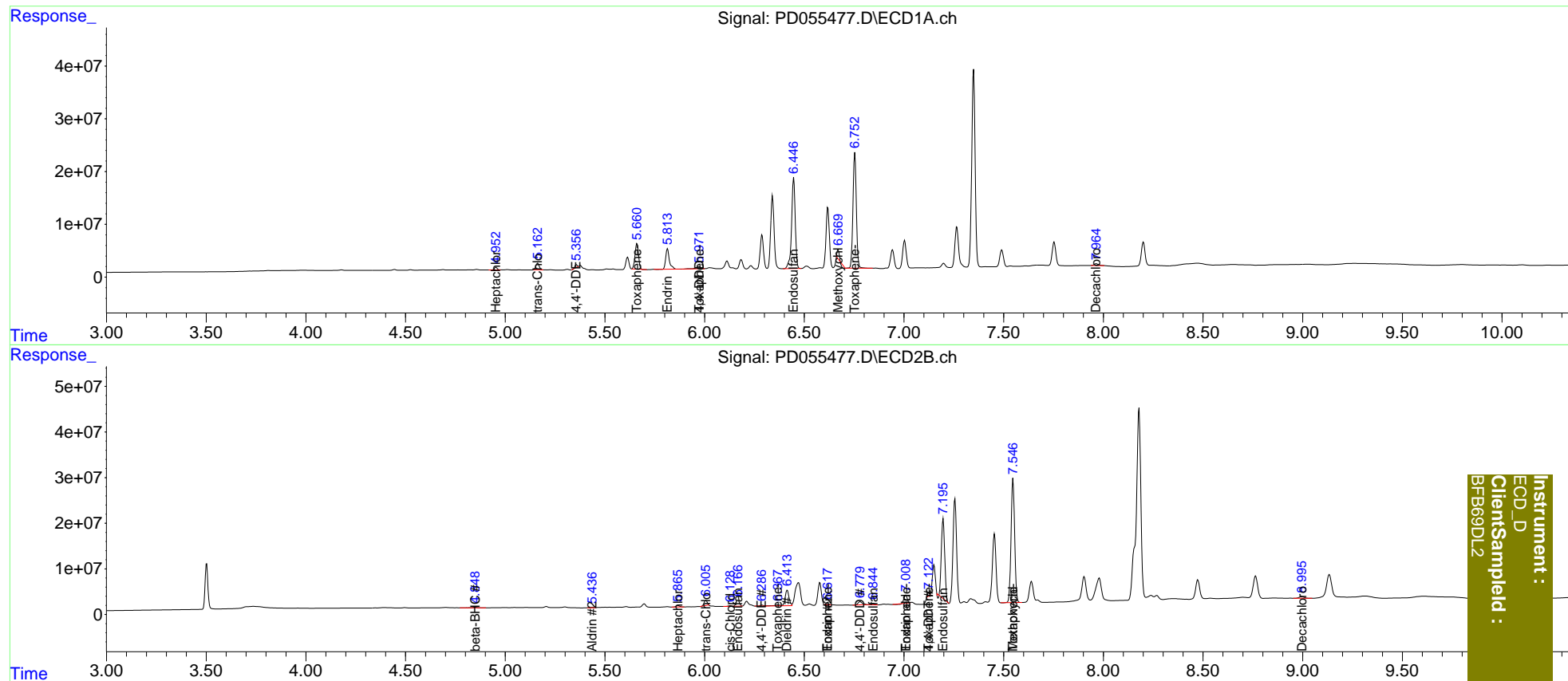
Compound	RT#1	RT#2	Resp#1	Resp#2	ng/ml	ng/ml
System Monitoring Compounds						
27) SA Decachlor...	7.965	8.996	5389112	6177494	5.885	4.734
Target Compounds						
5) MB Aldrin	0.000	5.437	0	1341147	N.D.	0.771
6) B beta-BHC	0.000	4.849f	0	1914180	N.D.	2.165
8) B Heptachlo...	4.953	5.866f	5177672	4177067	5.132	2.446 #
9) A Endosulfan I	0.000	6.167	0	15446380	N.D.	9.424
10) B trans-Chl...	5.163	6.007f	14374694	12354895	13.903	7.015 #
11) B cis-Chlor...	0.000	6.129	0	1629214	N.D.	0.948
12) B 4,4'-DDE	5.357f	6.287	5028603	2401998	4.934	1.425 #
13) MA Dieldrin	0.000	6.415	0	45430367	N.D.	25.102
14) MA Endrin	5.814	6.618f	49035574	1689355	54.745	1.209 #
15) B Endosulfa...	0.000	6.846	0	4094270	N.D.	2.633
16) A 4,4'-DDD	5.972f	6.780	7459158	11009346	9.203	7.696
17) MA 4,4'-DDT	0.000	7.124f	0	4806943	N.D.	3.546
18) B Endrin al...	6.233	7.009	-1816700	18304695	N.D.	13.828
19) B Endosulfa...	6.447	7.197	218.7E6	202.4E6	245.303	135.740 #
20) A Methoxychlor	6.670	7.547	8544191	342.4E6	23.430	444.123 #
22) Toxaphene-1	0.000	6.368	0	4449480	N.D.	569.812
23) Toxaphene-2	5.661	6.618	59869480	1689355	10265.768	173.456 #
24) Toxaphene-3	5.972	7.009	7459158	18304695	1385.183	1349.592
25) Toxaphene-4	0.000	7.124	0	4806943	N.D.	124.754
26) Toxaphene-5	6.754	7.547	258.7E6	342.4E6	14642.526	18868.789 #

(f)=RT Delta > 1/2 Window (#)=Amounts differ by > 25% (m)=manual int.

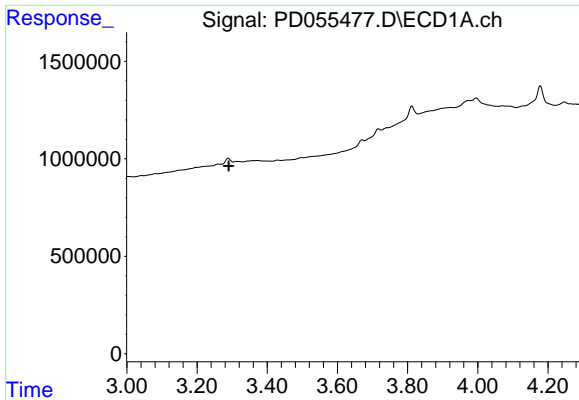
Data Path : Z:\pestpcbsrv\HPCHEM1\ECD_D\Data\PD102119\
 Data File : PD055477.D
 Signal(s) : Signal #1: ECD1A.ch Signal #2: ECD2B.ch
 Acq On : 21 Oct 2019 16:05
 Operator : SG\AJ
 Sample : K5262-02DL2 100X
 Misc :
 ALS Vial : 13 Sample Multiplier: 1

Integration File signal 1: autoint1.e
 Integration File signal 2: autoint2.e
 Quant Time: Oct 22 03:59:44 2019
 Quant Method : Z:\pestpcbsrv\HPCHEM1\ECD_D\Method\PD101819CLP.M
 Quant Title : GC Extractables
 QLast Update : Sat Oct 19 00:42:03 2019
 Response via : Initial Calibration
 Integrator: ChemStation

Volume Inj. : 1 µl
 Signal #1 Phase : ZB-MR2 Signal #2 Phase: ZB-MR1
 Signal #1 Info : 30M x 0.32mm x0.2 Signal #2 Info : 30M x 0.32mm x 0.50µm

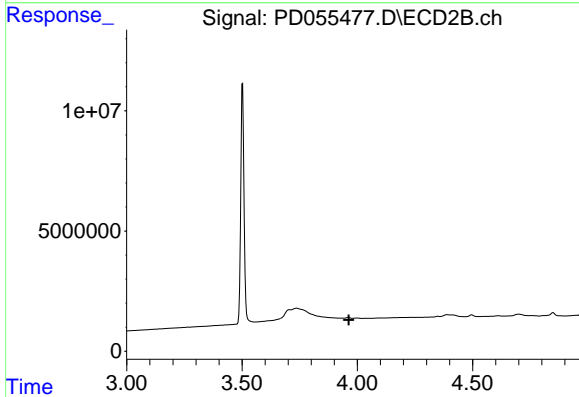


Instrument :
 ECD_D
 Client: BFB69DL2
 Sampled :

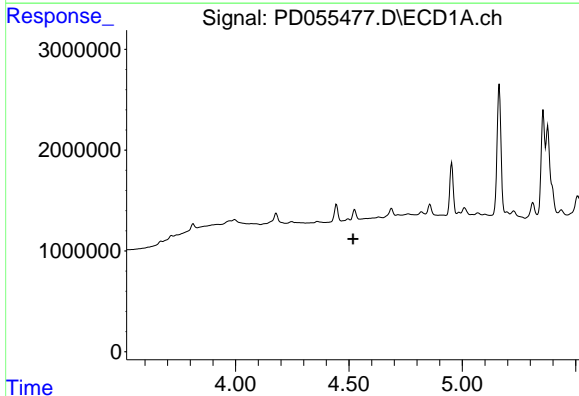


#1 Tetrachloro-m-xylene
 R.T.: 0.000 min
 Exp R.T. : 3.290 min
 Response: 0
 Conc: N.D.

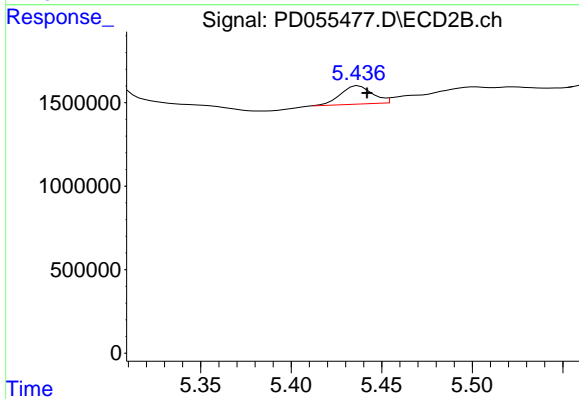
Instrument :
 ECD_D
 ClientSampleId :
 BFB69DL2



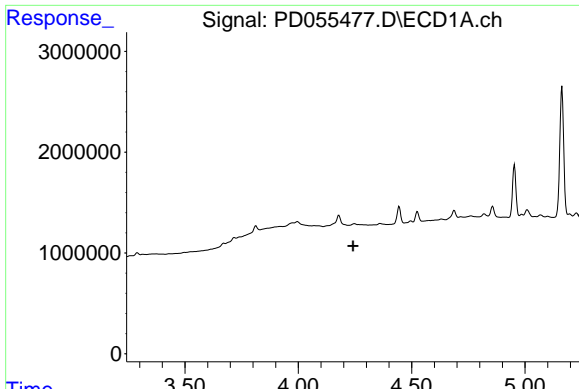
#1 Tetrachloro-m-xylene
 R.T.: 0.000 min
 Exp R.T. : 3.963 min
 Response: 0
 Conc: N.D.



#5 Aldrin
 R.T.: 0.000 min
 Exp R.T. : 4.518 min
 Response: 0
 Conc: N.D.

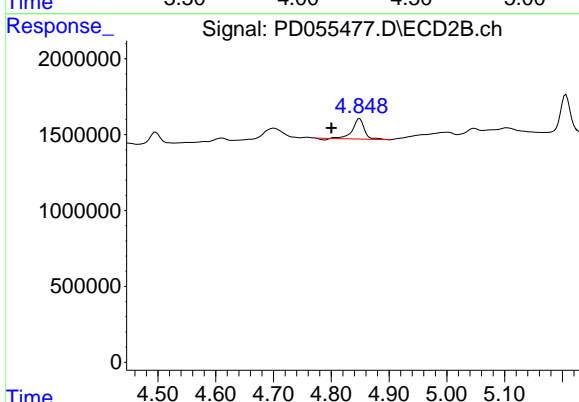


#5 Aldrin
 R.T.: 5.437 min
 Delta R.T.: -0.005 min
 Response: 1341147
 Conc: 0.77 ng/ml

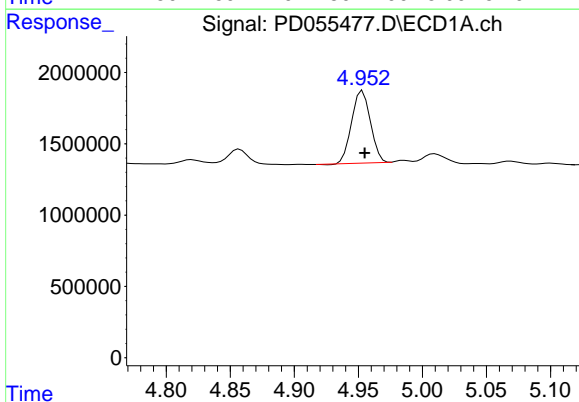


#6 beta-BHC
 R.T.: 0.000 min
 Exp R.T.: 4.242 min
 Response: 0
 Conc: N.D.

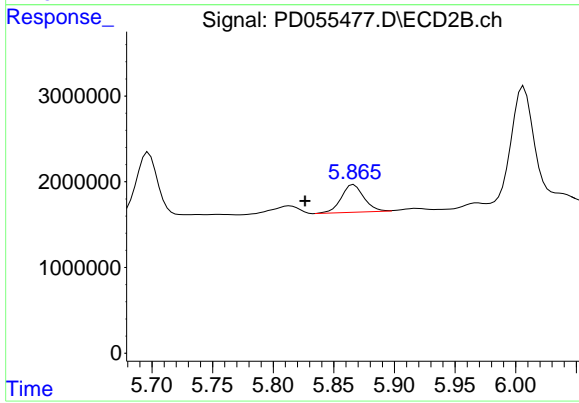
Instrument :
 ECD_D
 ClientSampleId :
 BFB69DL2



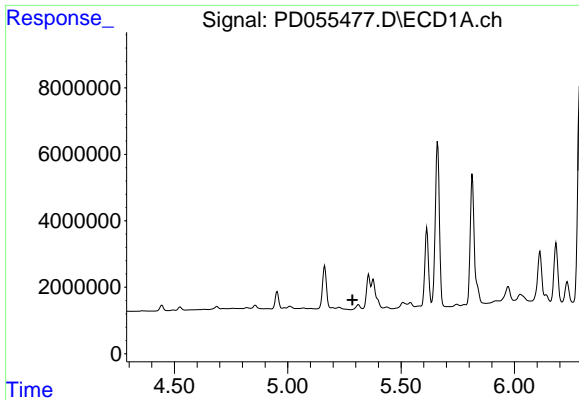
#6 beta-BHC
 R.T.: 4.849 min
 Delta R.T.: 0.049 min
 Response: 1914180
 Conc: 2.16 ng/ml



#8 Heptachlor epoxide
 R.T.: 4.953 min
 Delta R.T.: -0.002 min
 Response: 5177672
 Conc: 5.13 ng/ml



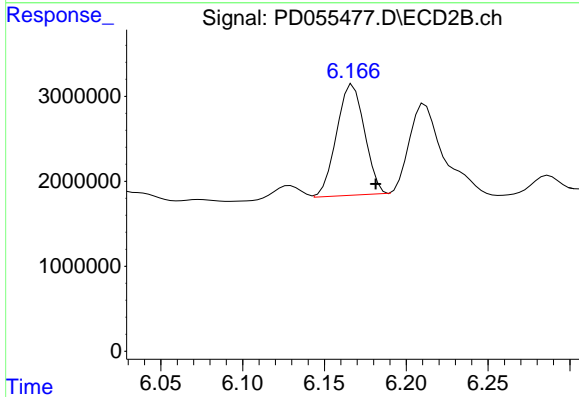
#8 Heptachlor epoxide
 R.T.: 5.866 min
 Delta R.T.: 0.040 min
 Response: 4177067
 Conc: 2.45 ng/ml



#9 Endosulfan I

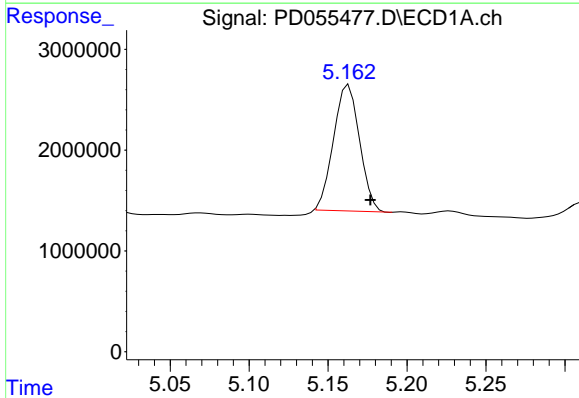
R.T.: 0.000 min
 Exp R.T.: 5.286 min
 Response: 0
 Conc: N.D.

Instrument :
 ECD_D
 ClientSampleId :
 BFB69DL2



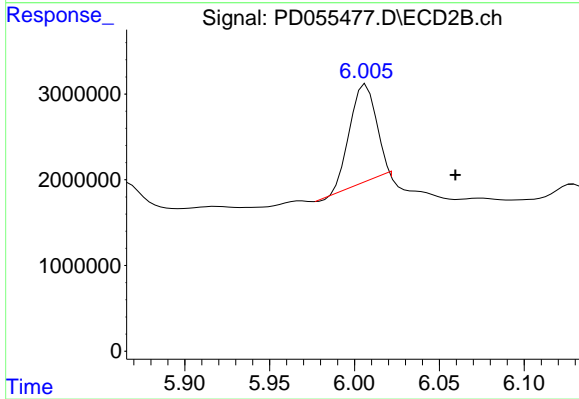
#9 Endosulfan I

R.T.: 6.167 min
 Delta R.T.: -0.014 min
 Response: 15446380
 Conc: 9.42 ng/ml



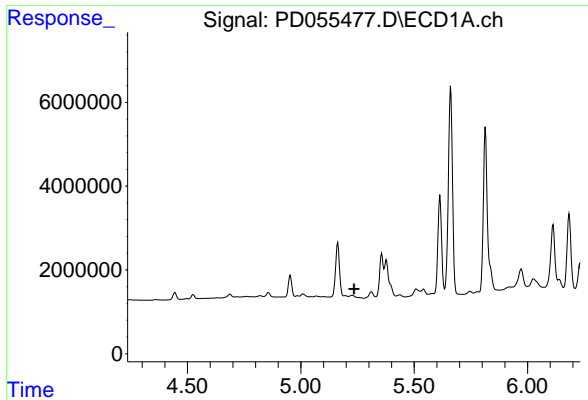
#10 trans-Chlordane

R.T.: 5.163 min
 Delta R.T.: -0.014 min
 Response: 14374694
 Conc: 13.90 ng/ml



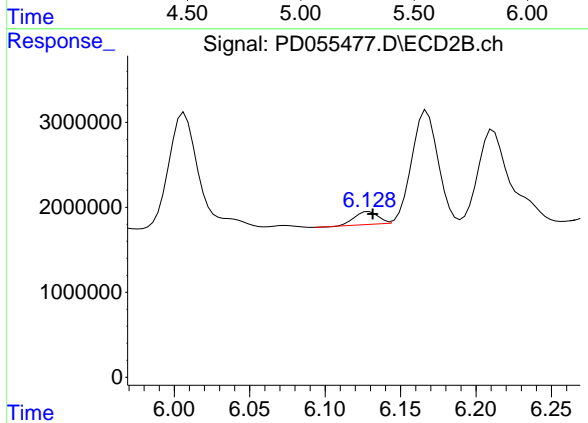
#10 trans-Chlordane

R.T.: 6.007 min
 Delta R.T.: -0.053 min
 Response: 12354895
 Conc: 7.01 ng/ml

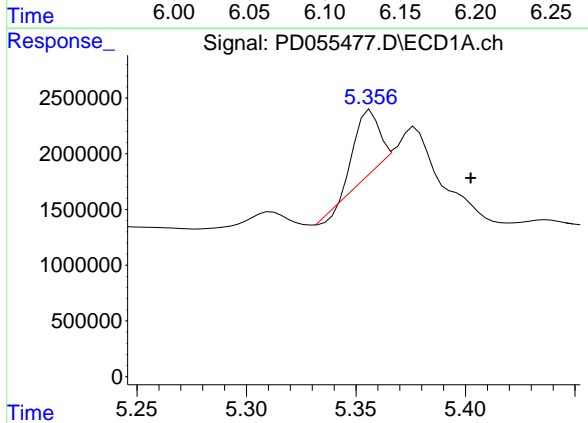


#11 cis-Chlordane
 R.T.: 0.000 min
 Exp R.T.: 5.234 min
 Response: 0
 Conc: N.D.

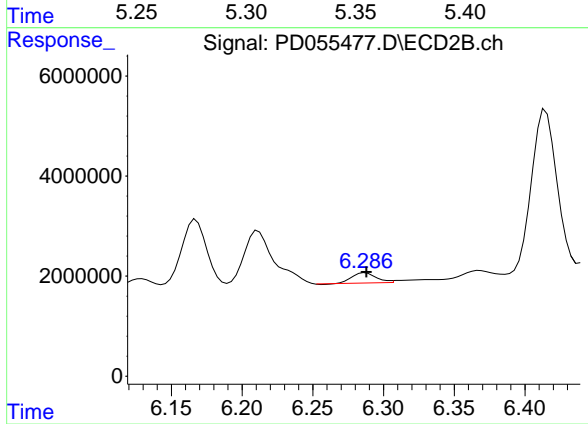
Instrument :
 ECD_D
 ClientSampleId :
 BFB69DL2



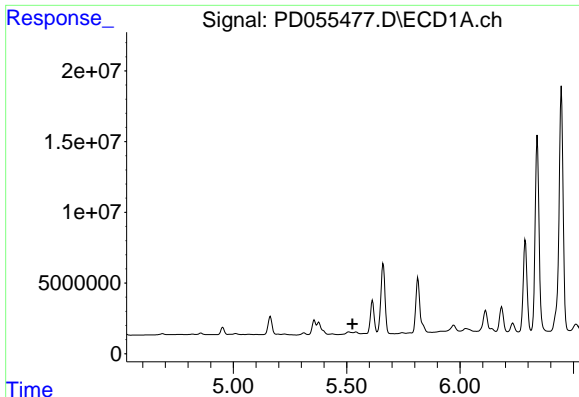
#11 cis-Chlordane
 R.T.: 6.129 min
 Delta R.T.: -0.002 min
 Response: 1629214
 Conc: 0.95 ng/ml



#12 4,4'-DDE
 R.T.: 5.357 min
 Delta R.T.: -0.046 min
 Response: 5028603
 Conc: 4.93 ng/ml



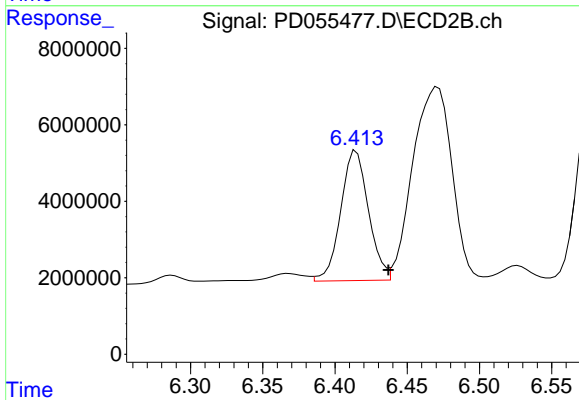
#12 4,4'-DDE
 R.T.: 6.287 min
 Delta R.T.: 0.000 min
 Response: 2401998
 Conc: 1.42 ng/ml



#13 Dieldrin

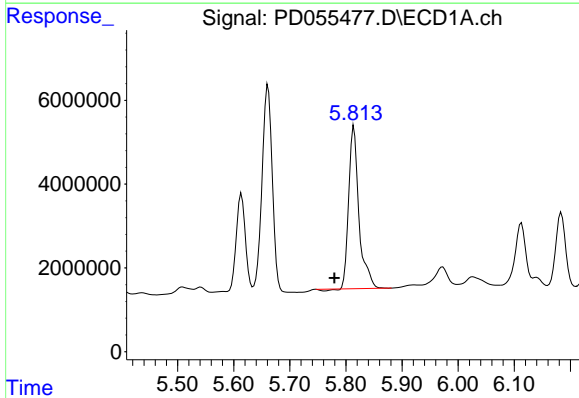
R.T.: 0.000 min
Exp R.T.: 5.526 min
Response: 0
Conc: N.D.

Instrument :
ECD_D
ClientSampleId :
BFB69DL2



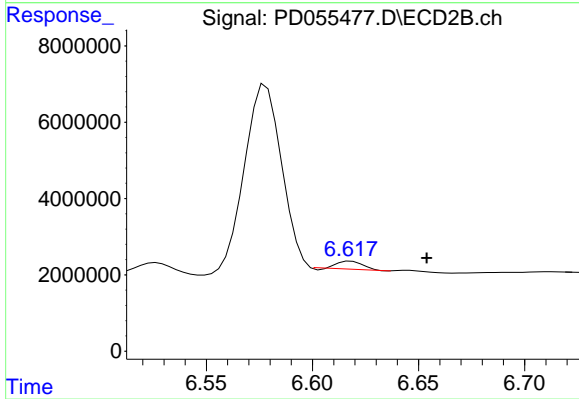
#13 Dieldrin

R.T.: 6.415 min
Delta R.T.: -0.022 min
Response: 45430367
Conc: 25.10 ng/ml



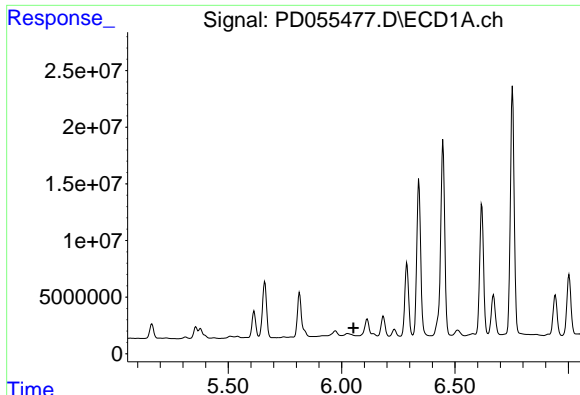
#14 Endrin

R.T.: 5.814 min
Delta R.T.: 0.034 min
Response: 49035574
Conc: 54.74 ng/ml



#14 Endrin

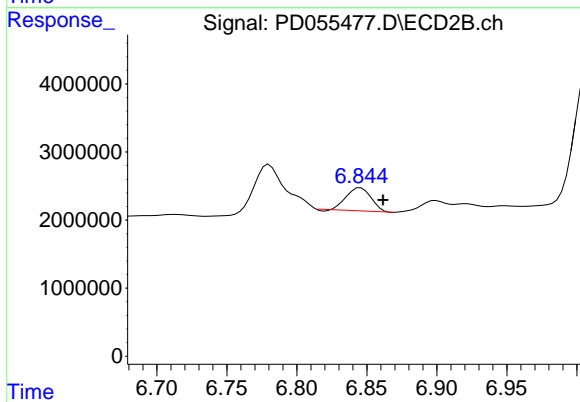
R.T.: 6.618 min
Delta R.T.: -0.036 min
Response: 1689355
Conc: 1.21 ng/ml



#15 Endosulfan II

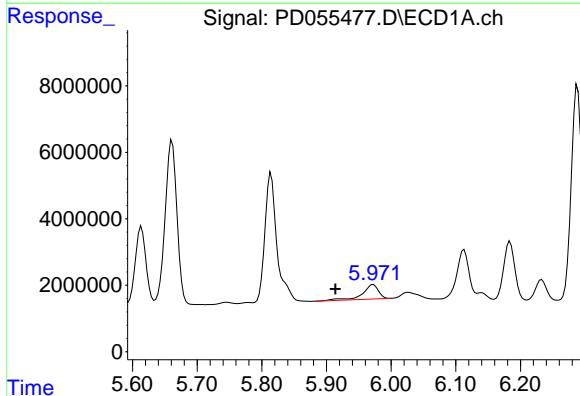
R.T.: 0.000 min
 Exp R.T.: 6.053 min
 Response: 0
 Conc: N.D.

Instrument :
 ECD_D
 ClientSampleId :
 BFB69DL2



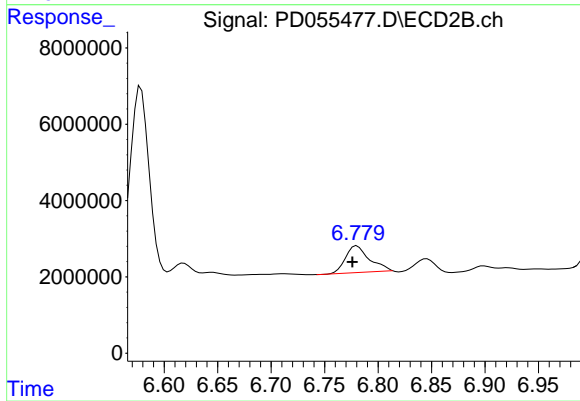
#15 Endosulfan II

R.T.: 6.846 min
 Delta R.T.: -0.016 min
 Response: 4094270
 Conc: 2.63 ng/ml



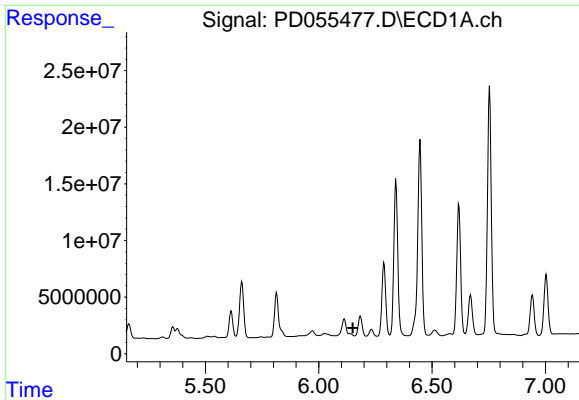
#16 4,4'-DDD

R.T.: 5.972 min
 Delta R.T.: 0.058 min
 Response: 7459158
 Conc: 9.20 ng/ml



#16 4,4'-DDD

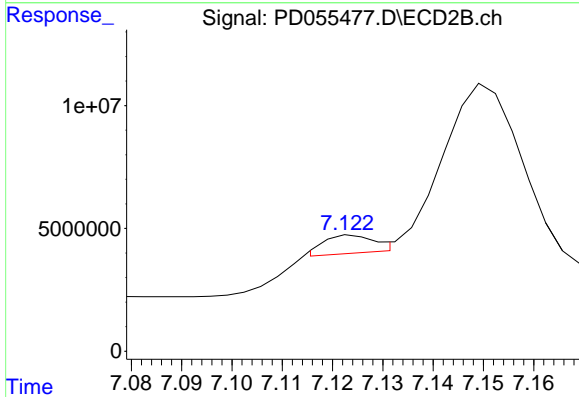
R.T.: 6.780 min
 Delta R.T.: 0.004 min
 Response: 11009346
 Conc: 7.70 ng/ml



#17 4,4'-DDT

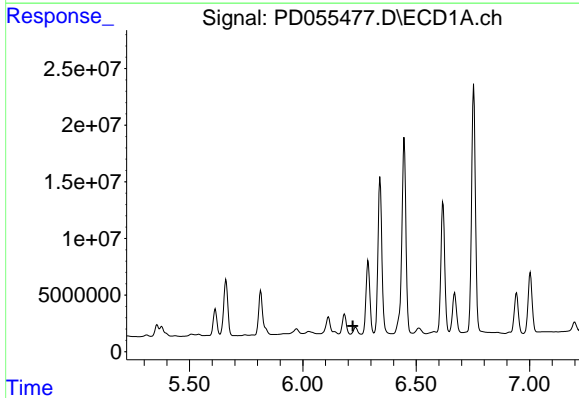
R.T.: 0.000 min
 Exp R.T.: 6.150 min
 Response: 0
 Conc: N.D.

Instrument :
 ECD_D
 ClientSampleId :
 BFB69DL2



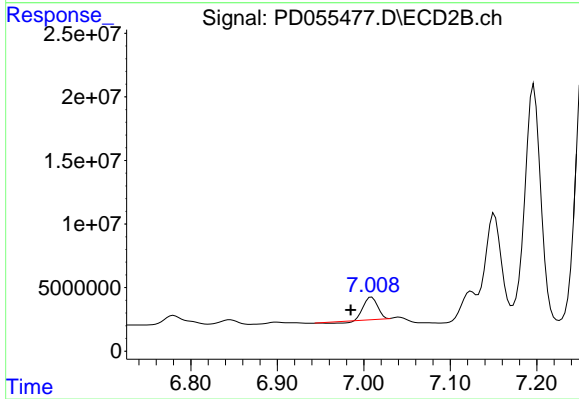
#17 4,4'-DDT

R.T.: 7.124 min
 Delta R.T.: 0.050 min
 Response: 4806943
 Conc: 3.55 ng/ml



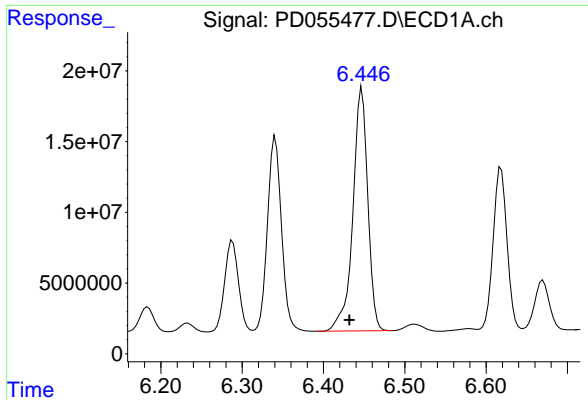
#18 Endrin aldehyde

R.T.: 6.233 min
 Delta R.T.: 0.012 min
 Response: -1816700
 Conc: N.D.



#18 Endrin aldehyde

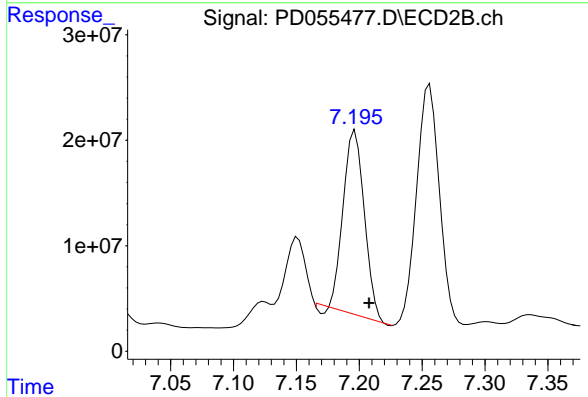
R.T.: 7.009 min
 Delta R.T.: 0.024 min
 Response: 18304695
 Conc: 13.83 ng/ml



#19 Endosulfan Sulfate

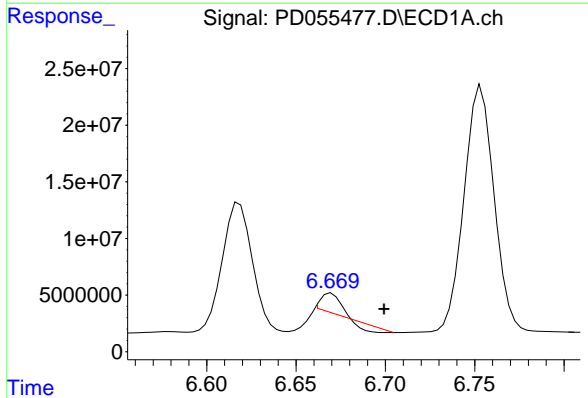
R.T.: 6.447 min
 Delta R.T.: 0.016 min
 Response: 218664237
 Conc: 245.30 ng/ml

Instrument :
 ECD_D
 ClientSampleId :
 BFB69DL2



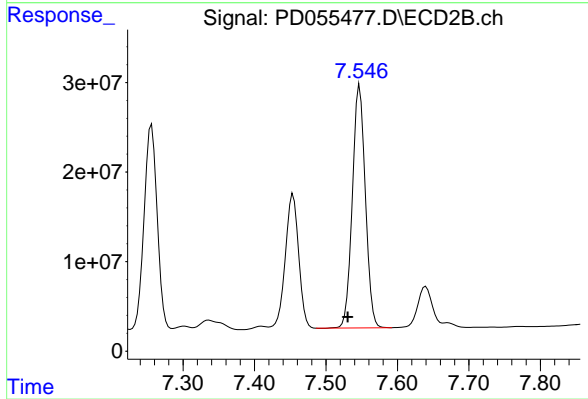
#19 Endosulfan Sulfate

R.T.: 7.197 min
 Delta R.T.: -0.011 min
 Response: 202373050
 Conc: 135.74 ng/ml



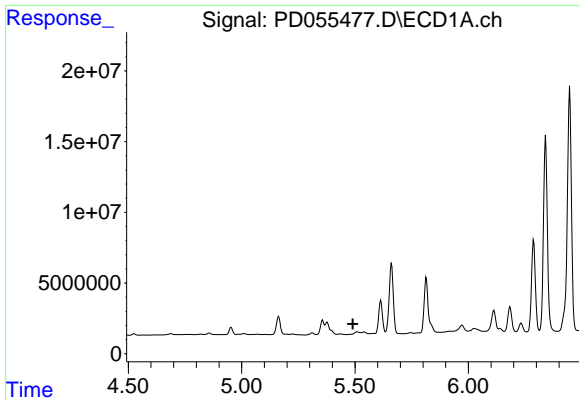
#20 Methoxychlor

R.T.: 6.670 min
 Delta R.T.: -0.029 min
 Response: 8544191
 Conc: 23.43 ng/ml



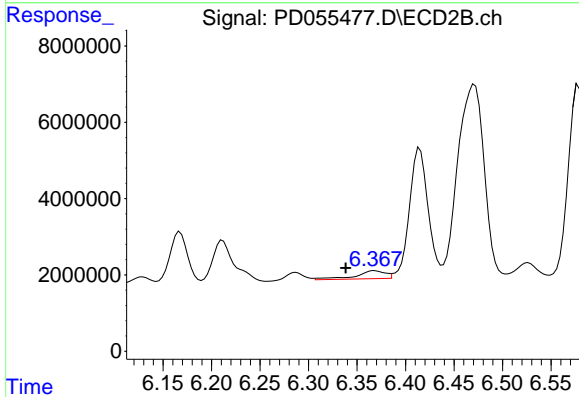
#20 Methoxychlor

R.T.: 7.547 min
 Delta R.T.: 0.017 min
 Response: 342387759
 Conc: 444.12 ng/ml

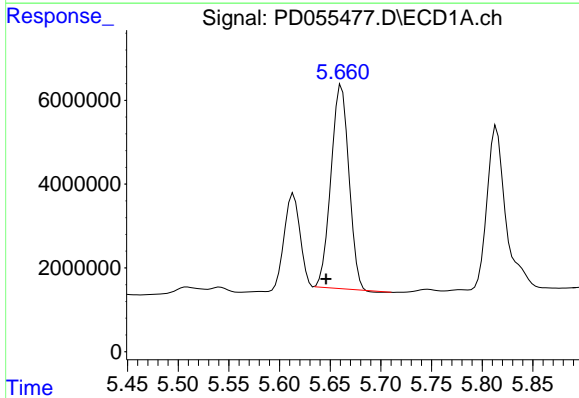


#22 Toxaphene-1
 R.T.: 0.000 min
 Exp R.T.: 5.491 min
 Response: 0
 Conc: N.D.

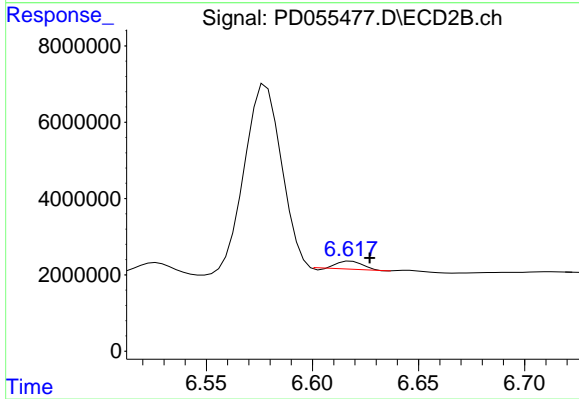
Instrument :
 ECD_D
 ClientSampled :
 BFB69DL2



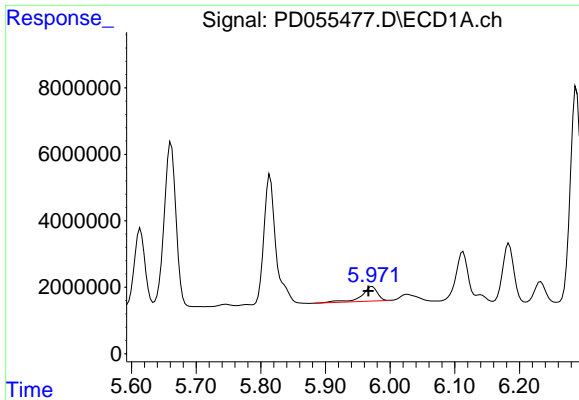
#22 Toxaphene-1
 R.T.: 6.368 min
 Delta R.T.: 0.030 min
 Response: 4449480
 Conc: 569.81 ng/ml



#23 Toxaphene-2
 R.T.: 5.661 min
 Delta R.T.: 0.015 min
 Response: 59869480
 Conc: 10265.77 ng/ml

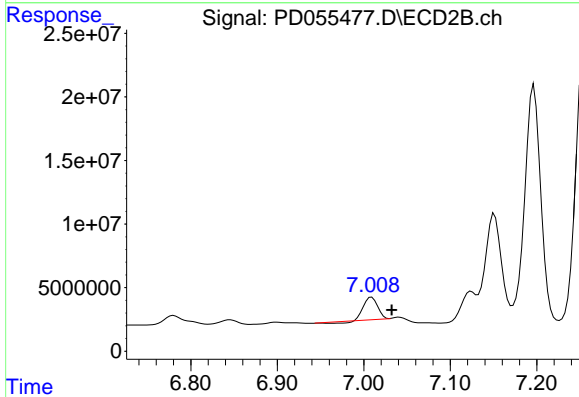


#23 Toxaphene-2
 R.T.: 6.618 min
 Delta R.T.: -0.009 min
 Response: 1689355
 Conc: 173.46 ng/ml

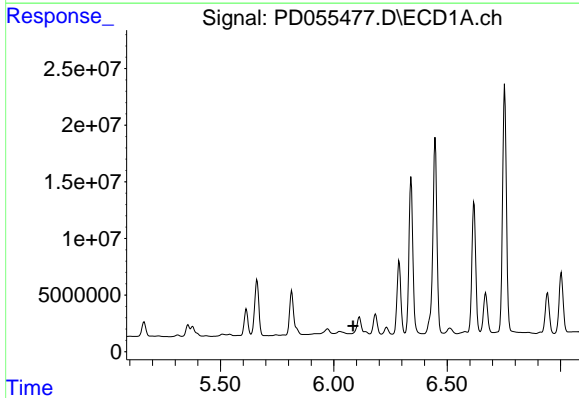


#24 Toxaphene-3
 R.T.: 5.972 min
 Delta R.T.: 0.006 min
 Response: 7459158
 Conc: 1385.18 ng/ml

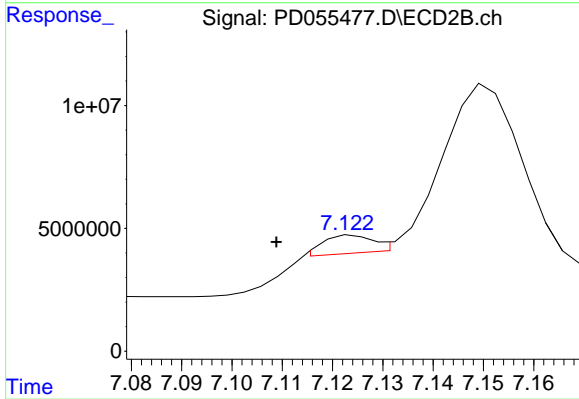
Instrument :
 ECD_D
ClientSampled :
 BFB69DL2



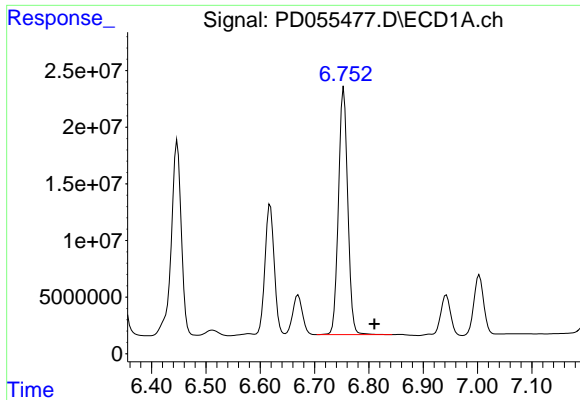
#24 Toxaphene-3
 R.T.: 7.009 min
 Delta R.T.: -0.023 min
 Response: 18304695
 Conc: 1349.59 ng/ml



#25 Toxaphene-4
 R.T.: 0.000 min
 Exp R.T. : 6.085 min
 Response: 0
 Conc: N.D.

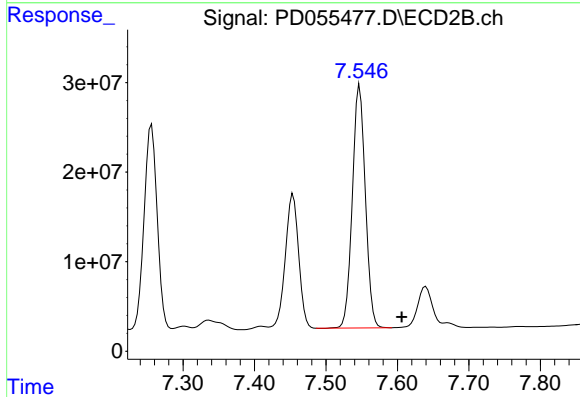


#25 Toxaphene-4
 R.T.: 7.124 min
 Delta R.T.: 0.016 min
 Response: 4806943
 Conc: 124.75 ng/ml

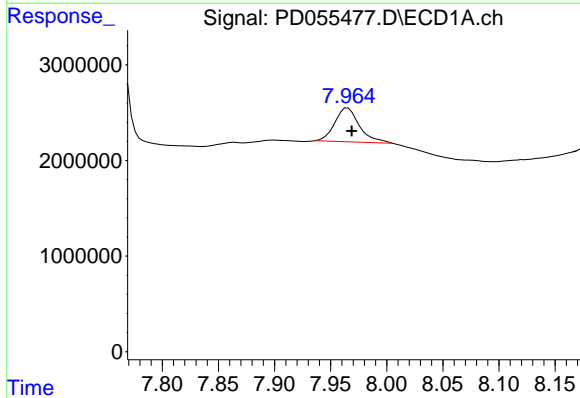


#26 Toxaphene-5
 R.T.: 6.754 min
 Delta R.T.: -0.056 min
 Response: 258732348
 Conc: 14642.53 ng/ml

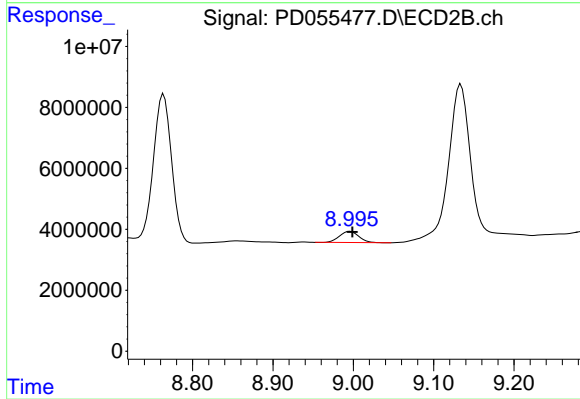
Instrument :
 ECD_D
 ClientSampleId :
 BFB69DL2



#26 Toxaphene-5
 R.T.: 7.547 min
 Delta R.T.: -0.059 min
 Response: 342387759
 Conc: 18868.79 ng/ml



#27 Decachlorobiphenyl
 R.T.: 7.965 min
 Delta R.T.: -0.004 min
 Response: 5389112
 Conc: 5.89 ng/ml



#27 Decachlorobiphenyl
 R.T.: 8.996 min
 Delta R.T.: -0.003 min
 Response: 6177494
 Conc: 4.73 ng/ml