

Data Path : Z:\pestpcbsrv\HPCHEM1\ECD_D\Data\PD031522\
 Data File : PD0684618.D
 Signal(s) : Signal #1: ECD1A.ch Signal #2: ECD2B.ch
 Acq On : 15 Mar 2022 15:56
 Operator : AR\AJ
 Sample : PB143352BL
 Misc :
 ALS Vial : 11 Sample Multiplier: 1

Instrument :
 ECD_D
 ClientSampleId :

Integration File signal 1: autoint1.e
 Integration File signal 2: autoint2.e
 Quant Time: Mar 16 06:33:19 2022
 Quant Method : Z:\pestpcbsrv\HPCHEM1\ECD_D\Method\PD031322CLP.M
 Quant Title : GC Extractables
 QLast Update : Mon Mar 14 07:24:04 2022
 Response via : Initial Calibration
 Integrator: ChemStation

Volume Inj. : 1 µl
 Signal #1 Phase : ZB-MR2 Signal #2 Phase: ZB-MR1
 Signal #1 Info : 30M x 0.32mm x0.2 Signal #2 Info : 30M x 0.32mm x 0.50µm

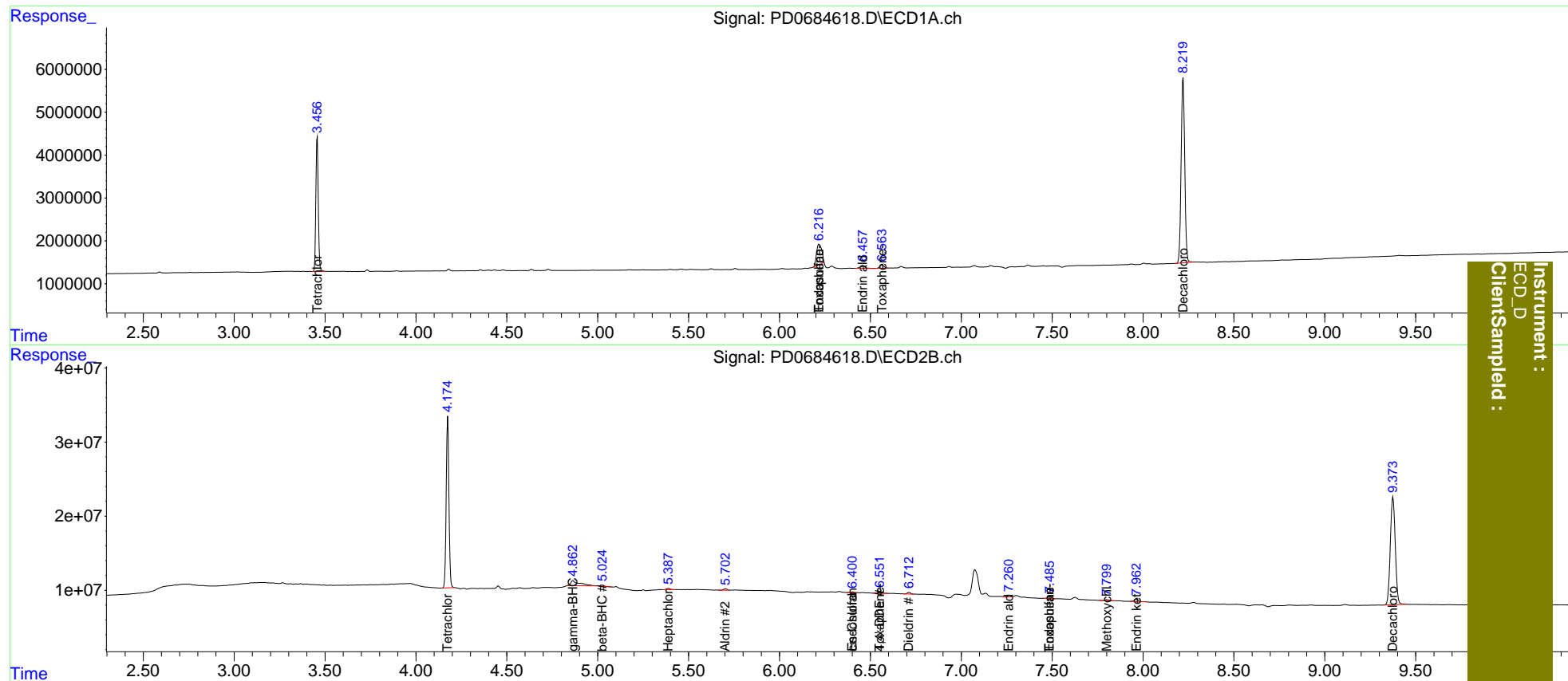
Compound	RT#1	RT#2	Resp#1	Resp#2	ng/ml	ng/ml
System Monitoring Compounds						
1) SA Tetrachlo...	3.457	4.175	28902803	239.5E6	21.224	21.880
2) SA Decachlor...	8.220	9.375	59277860	276.0E6	42.629	43.766
Target Compounds						
2) A alpha-BHC	0.000	4.573	0	1068138	N.D.	<MDL
3) MA gamma-BHC...	0.000	4.864	0	22946906	N.D.	1.583
4) MA Heptachlor	0.000	5.389	0	2164770	N.D.	0.157
5) MB Aldrin	0.000	5.703	0	2500227	N.D.	0.185
6) B beta-BHC	0.000	5.025	0	1782131	N.D.	0.279
7) B delta-BHC	0.000	5.252	0	960832	N.D.	<MDL
8) B Heptachlo...	0.000	6.153f	0	482621	N.D.	<MDL
9) A Endosulfan I	0.000	6.402f	0	1360123	N.D.	0.125
10) B trans-Chl...	0.000	6.330	0	1116181	N.D.	<MDL
11) B cis-Chlor...	0.000	6.402	0	1360123	N.D.	0.119
12) B 4,4'-DDE	0.000	6.552	0	2866922	N.D.	0.281
13) MA Dieldrin	0.000	6.713	0	2944115	N.D.	0.265
15) B Endosulfa...	6.217f	7.134	9634188	-9639293	6.642	N.D. #
18) B Endrin al...	6.458	7.262	1211817	2162106	1.105	0.326 #
19) B Endosulfa...	0.000	7.486	0	3108905	N.D.	0.380
20) A Methoxychlor	0.000	7.800	0	1801797	N.D.	0.514
21) B Endrin ke...	0.000	7.964	0	5109859	N.D.	0.598
22) Toxaphene-1	0.000	6.552f	0	2866922	N.D.	67.375
23) Toxaphene-2	6.217	0.000	9634188	0	898.353	N.D. #
25) Toxaphene-4	6.564	7.486	1202760	3108905	43.233	23.270 #

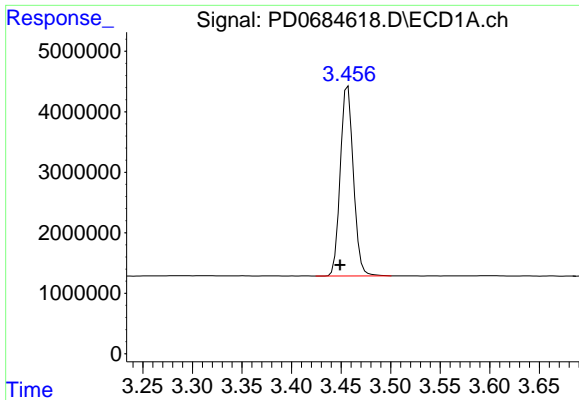
(f)=RT Delta > 1/2 Window (#)=Amounts differ by > 25% (m)=manual int.

Data Path : Z:\pestpcbsrv\HPCHEM1\ECD_D\Data\PD031522\
 Data File : PD0684618.D
 Signal(s) : Signal #1: ECD1A.ch Signal #2: ECD2B.ch
 Acq On : 15 Mar 2022 15:56
 Operator : AR\AJ
 Sample : PB143352BL
 Misc :
 ALS Vial : 11 Sample Multiplier: 1

Integration File signal 1: autoint1.e
 Integration File signal 2: autoint2.e
 Quant Time: Mar 16 06:33:19 2022
 Quant Method : Z:\pestpcbsrv\HPCHEM1\ECD_D\Method\PD031322CLP.M
 Quant Title : GC Extractables
 QLast Update : Mon Mar 14 07:24:04 2022
 Response via : Initial Calibration
 Integrator: ChemStation

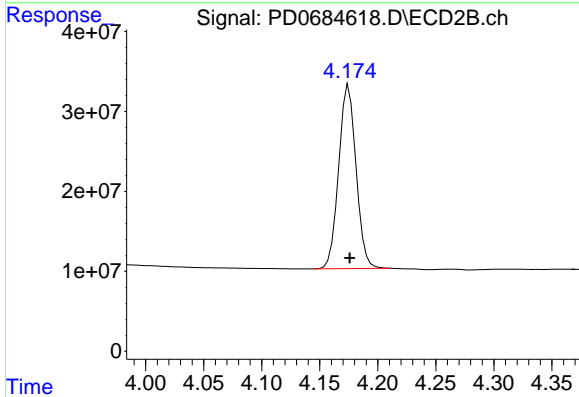
Volume Inj. : 1 µl
 Signal #1 Phase : ZB-MR2 Signal #2 Phase: ZB-MR1
 Signal #1 Info : 30M x 0.32mm x0.2 Signal #2 Info : 30M x 0.32mm x 0.50µm



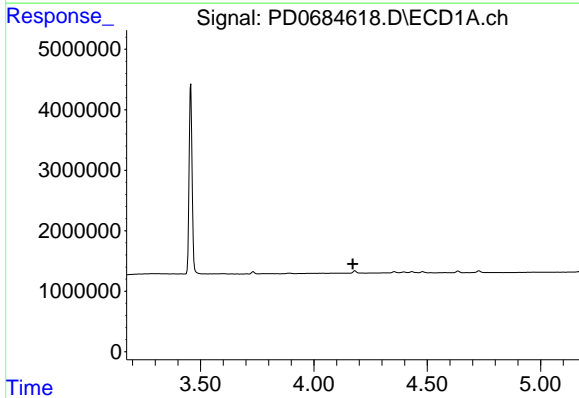


#1 Tetrachloro-m-xylene
 R.T.: 3.457 min
 Delta R.T.: 0.008 min
 Response: 28902803
 Conc: 21.22 ng/ml

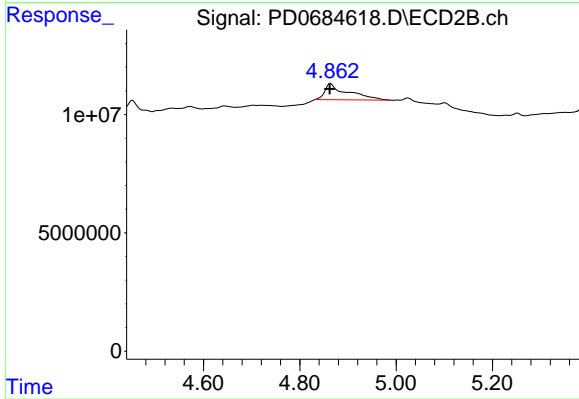
Instrument :
 ECD_D
 ClientSampleId :



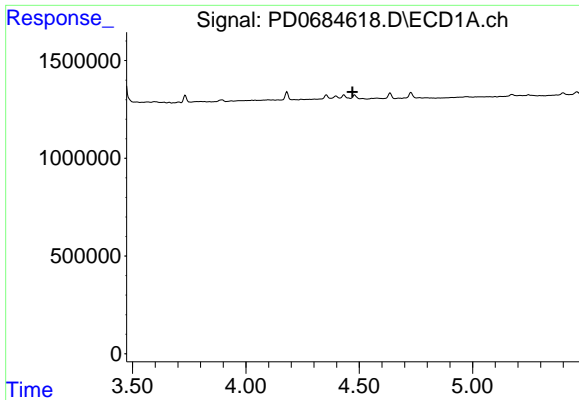
#1 Tetrachloro-m-xylene
 R.T.: 4.175 min
 Delta R.T.: 0.000 min
 Response: 239489357
 Conc: 21.88 ng/ml



#3 gamma-BHC (Lindane)
 R.T.: 0.000 min
 Exp R.T. : 4.172 min
 Response: 0
 Conc: N.D.



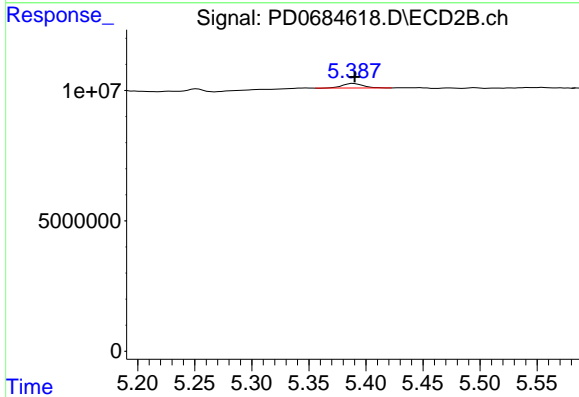
#3 gamma-BHC (Lindane)
 R.T.: 4.864 min
 Delta R.T.: 0.001 min
 Response: 22946906
 Conc: 1.58 ng/ml



#4 Heptachlor

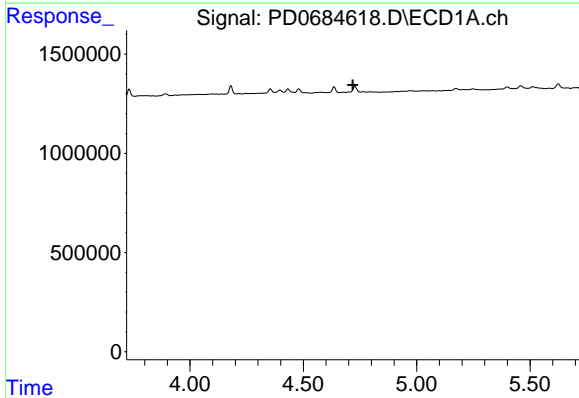
R.T.: 0.000 min
 Exp R.T.: 4.471 min
 Response: 0
 Conc: N.D.

Instrument :
 ECD_D
 ClientSampleId :



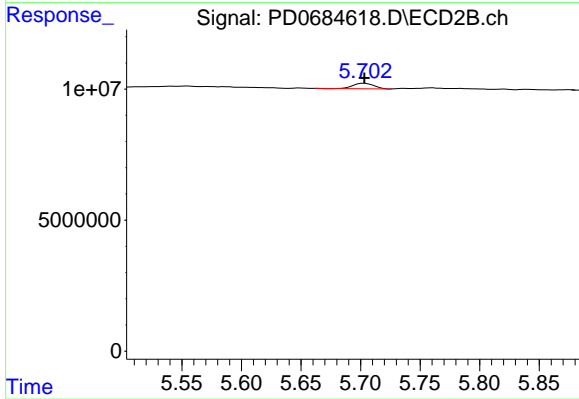
#4 Heptachlor

R.T.: 5.389 min
 Delta R.T.: -0.001 min
 Response: 2164770
 Conc: 0.16 ng/ml



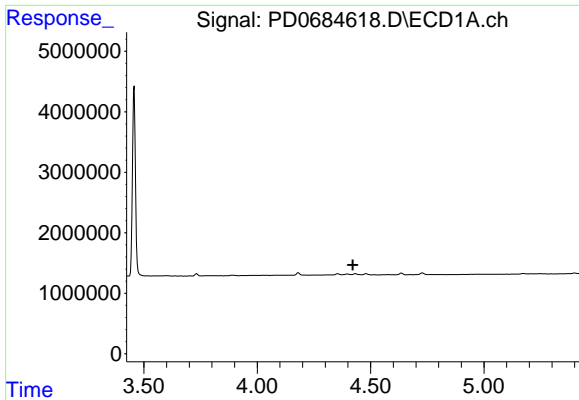
#5 Aldrin

R.T.: 0.000 min
 Exp R.T.: 4.718 min
 Response: 0
 Conc: N.D.



#5 Aldrin

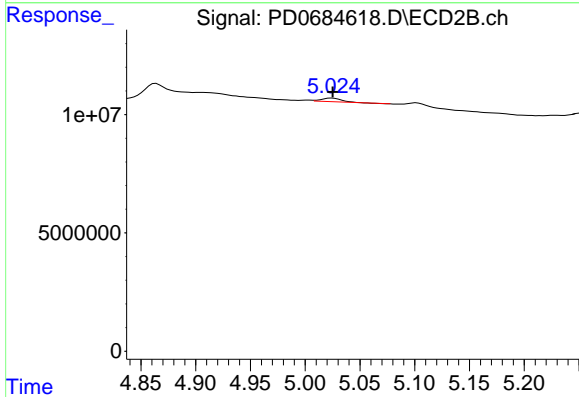
R.T.: 5.703 min
 Delta R.T.: 0.000 min
 Response: 2500227
 Conc: 0.19 ng/ml



#6 beta-BHC

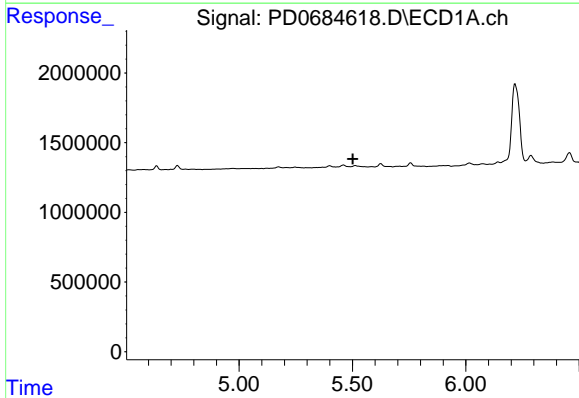
R.T.: 0.000 min
 Exp R.T.: 4.422 min
 Response: 0
 Conc: N.D.

Instrument :
 ECD_D
 ClientSampleId :



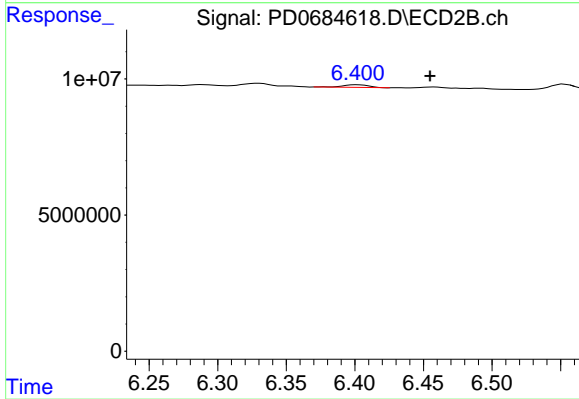
#6 beta-BHC

R.T.: 5.025 min
 Delta R.T.: 0.000 min
 Response: 1782131
 Conc: 0.28 ng/ml



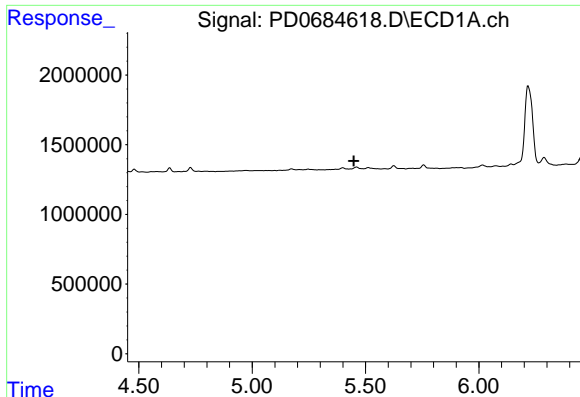
#9 Endosulfan I

R.T.: 0.000 min
 Exp R.T.: 5.502 min
 Response: 0
 Conc: N.D.



#9 Endosulfan I

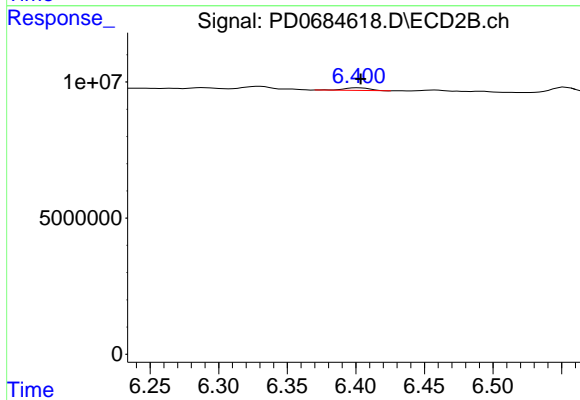
R.T.: 6.402 min
 Delta R.T.: -0.053 min
 Response: 1360123
 Conc: 0.12 ng/ml



#11 cis-Chlordane

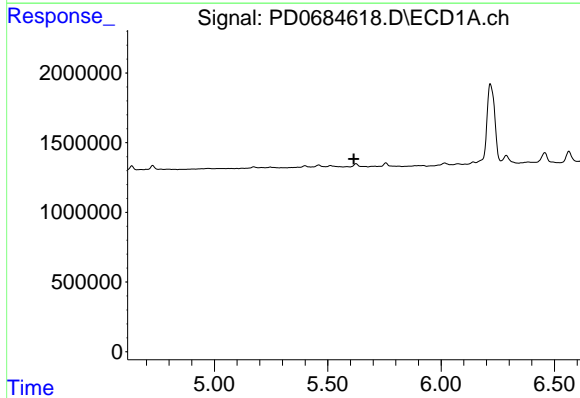
R.T.: 0.000 min
 Exp R.T. : 5.448 min
 Response: 0
 Conc: N.D.

Instrument :
 ECD_D
 ClientSampleId :



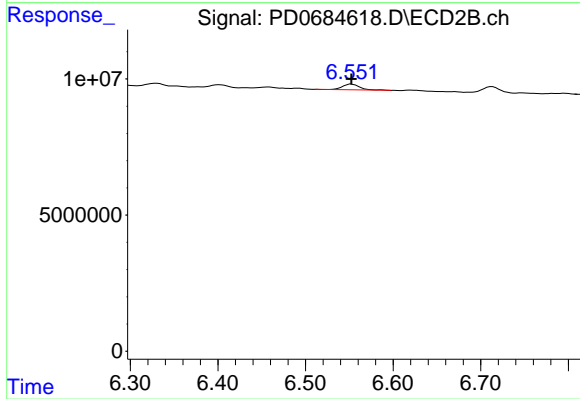
#11 cis-Chlordane

R.T.: 6.402 min
 Delta R.T.: -0.002 min
 Response: 1360123
 Conc: 0.12 ng/ml



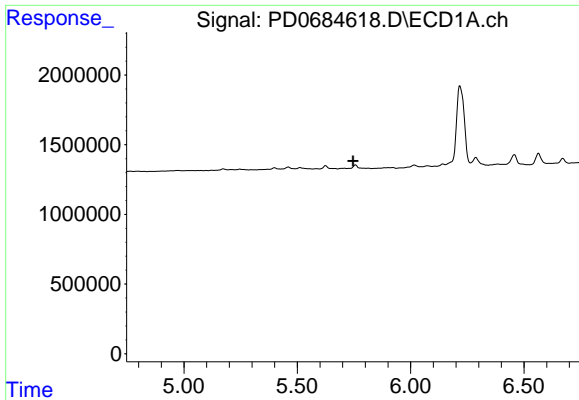
#12 4,4'-DDE

R.T.: 0.000 min
 Exp R.T. : 5.614 min
 Response: 0
 Conc: N.D.



#12 4,4'-DDE

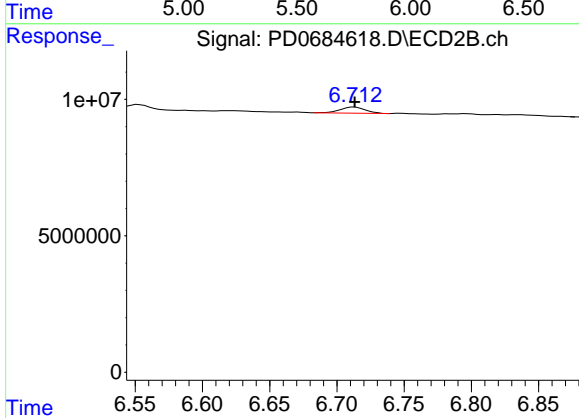
R.T.: 6.552 min
 Delta R.T.: 0.000 min
 Response: 2866922
 Conc: 0.28 ng/ml



#13 Dieldrin

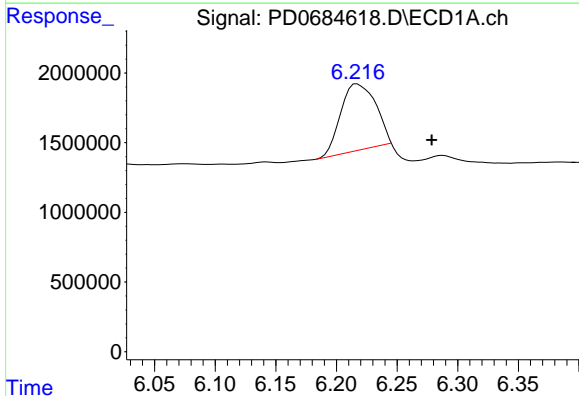
R.T.: 0.000 min
 Exp R.T.: 5.746 min
 Response: 0
 Conc: N.D.

Instrument :
 ECD_D
 ClientSampleId :



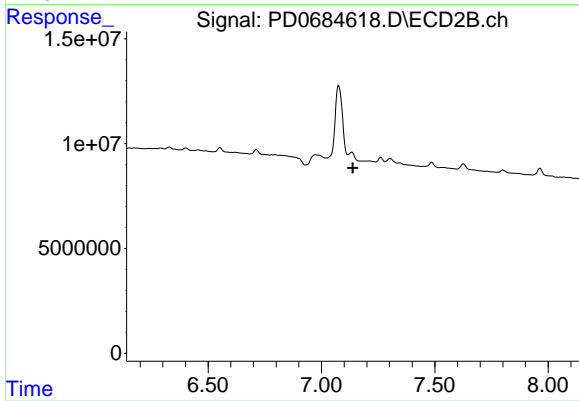
#13 Dieldrin

R.T.: 6.713 min
 Delta R.T.: 0.000 min
 Response: 2944115
 Conc: 0.26 ng/ml



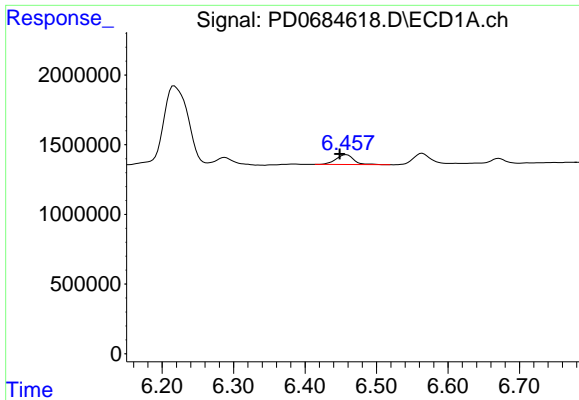
#15 Endosulfan II

R.T.: 6.217 min
 Delta R.T.: -0.061 min
 Response: 9634188
 Conc: 6.64 ng/ml



#15 Endosulfan II

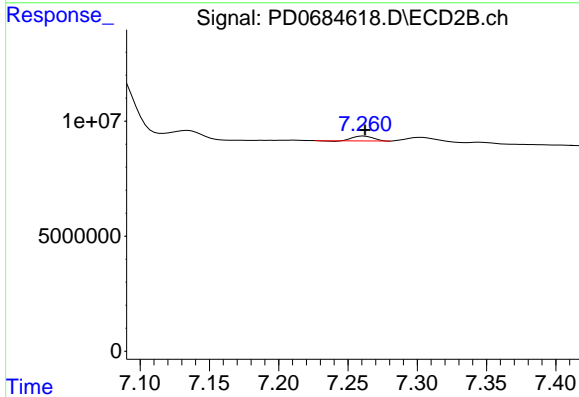
R.T.: 7.134 min
 Delta R.T.: -0.004 min
 Response: -9639293
 Conc: N.D.



#18 Endrin aldehyde

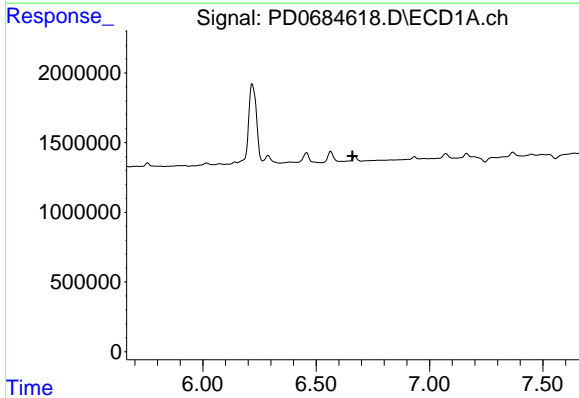
R.T.: 6.458 min
 Delta R.T.: 0.009 min
 Response: 1211817
 Conc: 1.11 ng/ml

Instrument :
 ECD_D
 ClientSampleId :



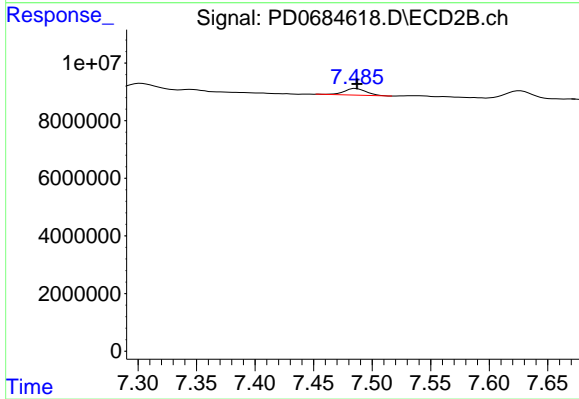
#18 Endrin aldehyde

R.T.: 7.262 min
 Delta R.T.: 0.000 min
 Response: 2162106
 Conc: 0.33 ng/ml



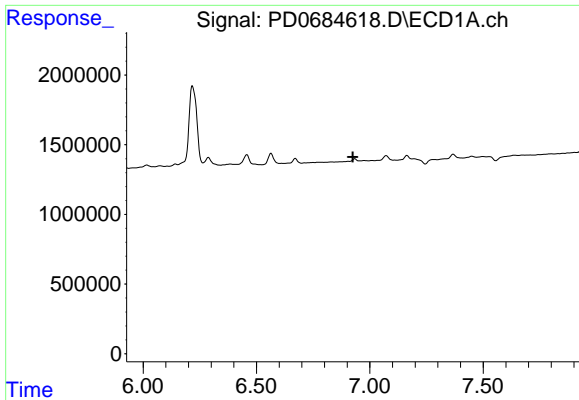
#19 Endosulfan Sulfate

R.T.: 0.000 min
 Exp R.T. : 6.661 min
 Response: 0
 Conc: N.D.



#19 Endosulfan Sulfate

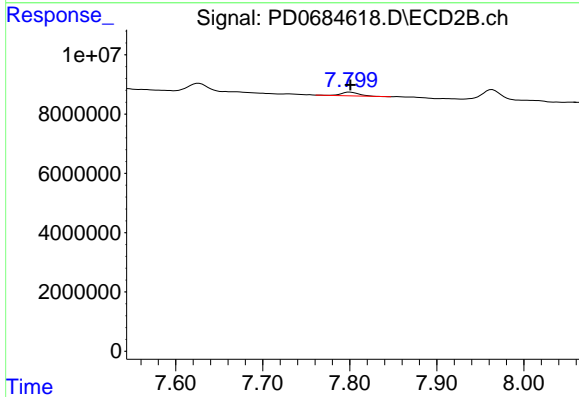
R.T.: 7.486 min
 Delta R.T.: 0.000 min
 Response: 3108905
 Conc: 0.38 ng/ml



#20 Methoxychlor

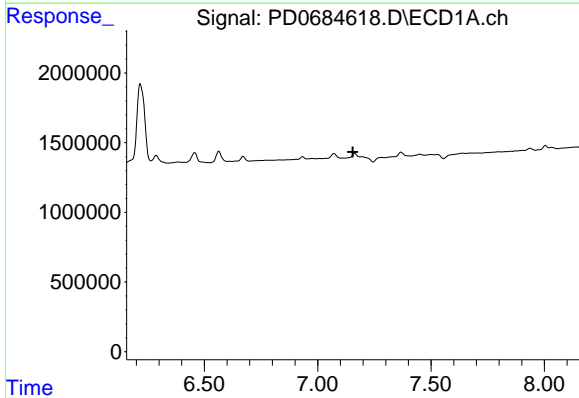
R.T.: 0.000 min
 Exp R.T.: 6.925 min
 Response: 0
 Conc: N.D.

Instrument :
 ECD_D
 ClientSampleId :



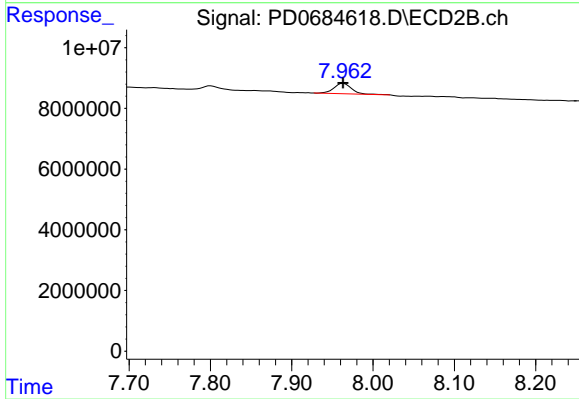
#20 Methoxychlor

R.T.: 7.800 min
 Delta R.T.: 0.000 min
 Response: 1801797
 Conc: 0.51 ng/ml



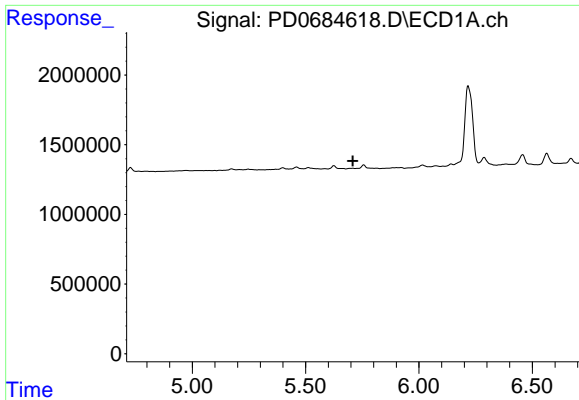
#21 Endrin ketone

R.T.: 0.000 min
 Exp R.T.: 7.155 min
 Response: 0
 Conc: N.D.



#21 Endrin ketone

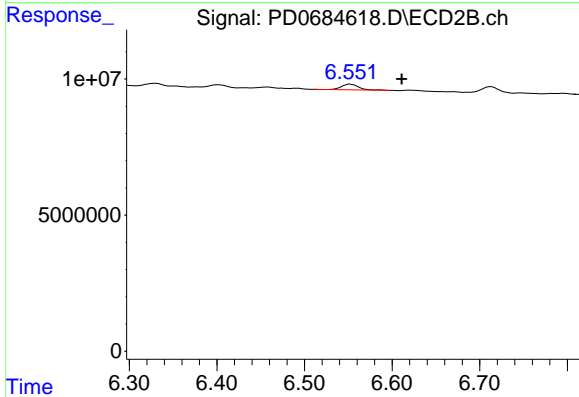
R.T.: 7.964 min
 Delta R.T.: 0.000 min
 Response: 5109859
 Conc: 0.60 ng/ml



#22 Toxaphene-1

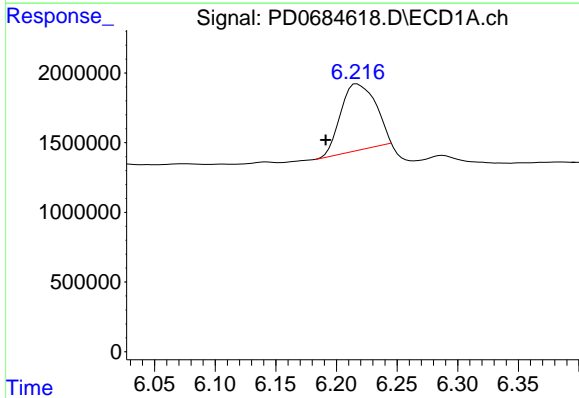
R.T.: 0.000 min
 Exp R.T.: 5.708 min
 Response: 0
 Conc: N.D.

Instrument :
 ECD_D
 ClientSampleId :



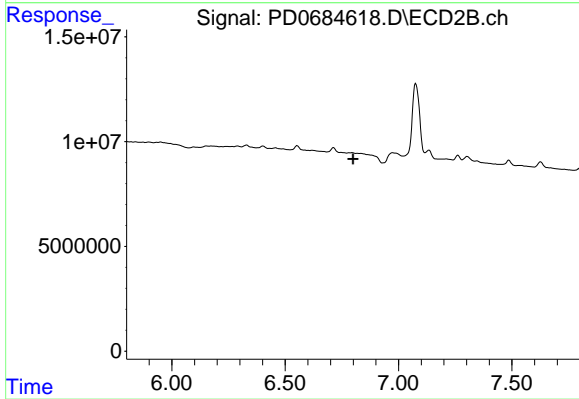
#22 Toxaphene-1

R.T.: 6.552 min
 Delta R.T.: -0.059 min
 Response: 2866922
 Conc: 67.37 ng/ml



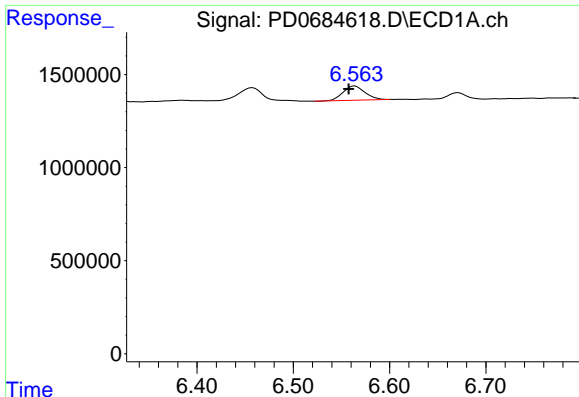
#23 Toxaphene-2

R.T.: 6.217 min
 Delta R.T.: 0.026 min
 Response: 9634188
 Conc: 898.35 ng/ml



#23 Toxaphene-2

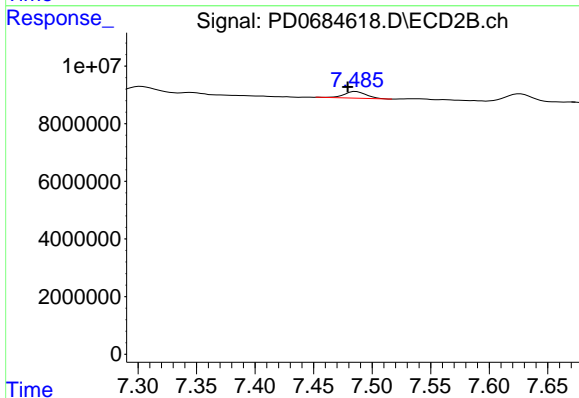
R.T.: 0.000 min
 Exp R.T.: 6.799 min
 Response: 0
 Conc: N.D.



#25 Toxaphene-4

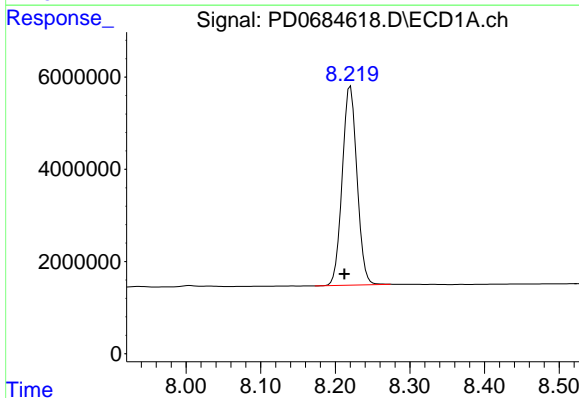
R.T.: 6.564 min
 Delta R.T.: 0.006 min
 Response: 1202760
 Conc: 43.23 ng/ml

Instrument :
 ECD_D
 ClientSampleId :



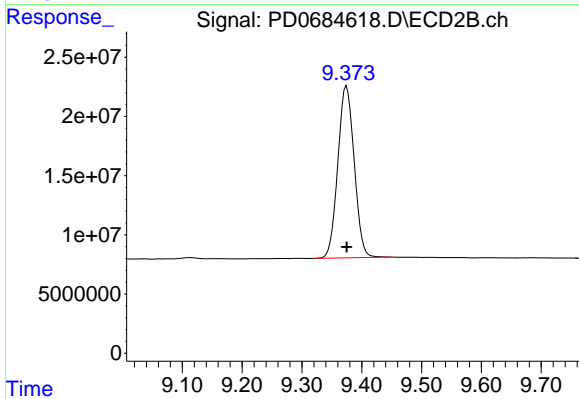
#25 Toxaphene-4

R.T.: 7.486 min
 Delta R.T.: 0.007 min
 Response: 3108905
 Conc: 23.27 ng/ml



#27 Decachlorobiphenyl

R.T.: 8.220 min
 Delta R.T.: 0.008 min
 Response: 59277860
 Conc: 42.63 ng/ml



#27 Decachlorobiphenyl

R.T.: 9.375 min
 Delta R.T.: 0.000 min
 Response: 276037916
 Conc: 43.77 ng/ml