

Data Path : Z:\pestpcbsrv\HPCHEM1\ECD\_D\Data\PD031522\  
 Data File : PD068619.D  
 Signal(s) : Signal #1: ECD1A.ch Signal #2: ECD2B.ch  
 Acq On : 15 Mar 2022 17:47  
 Operator : AR\AJ  
 Sample : PB143352BS  
 Misc :  
 ALS Vial : 12 Sample Multiplier: 1

Instrument :  
 ECD\_D  
 ClientSampleId :  
 PLCS352

Manual Integrations  
**APPROVED**

Reviewed By :Abdul Mirza 03/17/2022  
 Supervised By :Ankita Jodhani 03/18/2022

Integration File signal 1: autoint1.e  
 Integration File signal 2: autoint2.e  
 Quant Time: Mar 16 06:33:34 2022  
 Quant Method : Z:\pestpcbsrv\HPCHEM1\ECD\_D\Method\PD031322CLP.M  
 Quant Title : GC Extractables  
 QLast Update : Mon Mar 14 07:24:04 2022  
 Response via : Initial Calibration  
 Integrator: ChemStation

Volume Inj. : 1 µl  
 Signal #1 Phase : ZB-MR2 Signal #2 Phase: ZB-MR1  
 Signal #1 Info : 30M x 0.32mm x0.2 Signal #2 Info : 30M x 0.32mm x 0.50µm

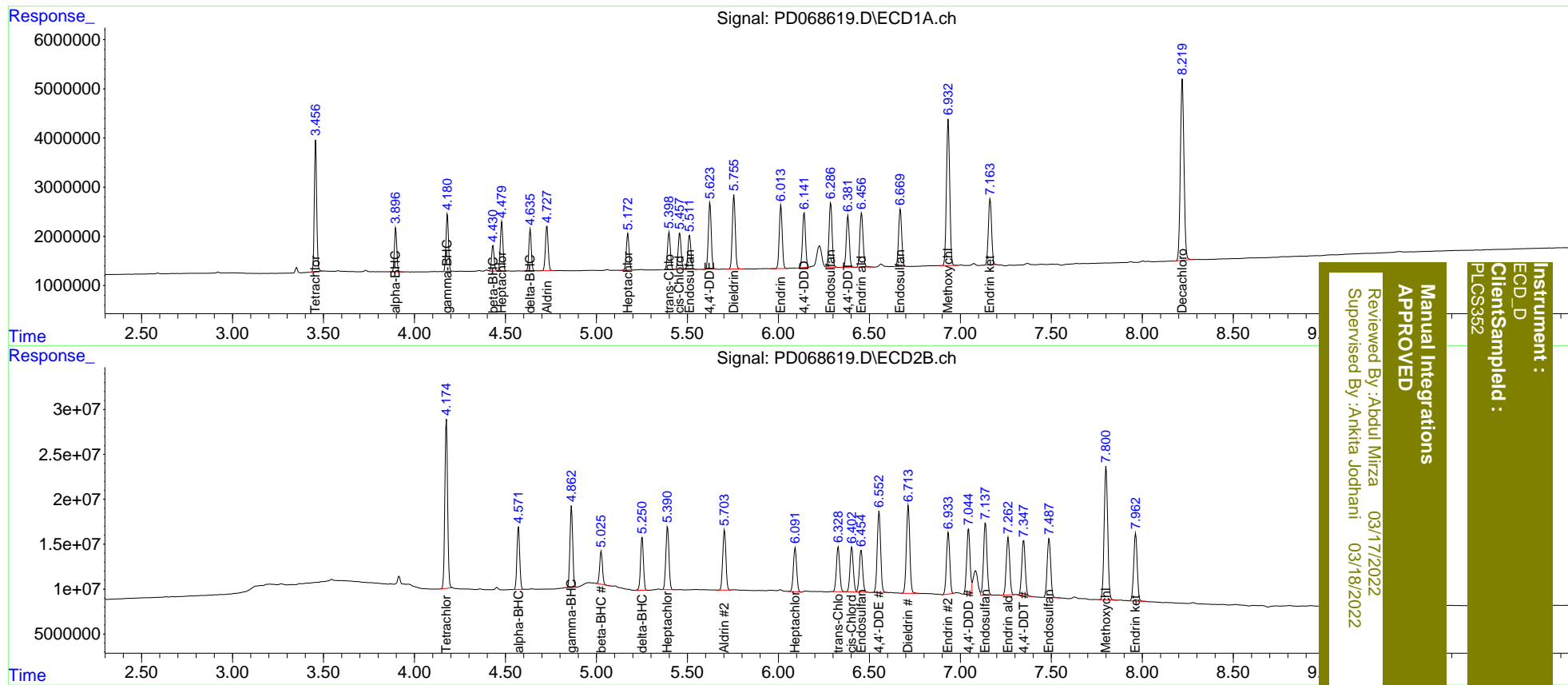
Compound	RT#1	RT#2	Resp#1	Resp#2	ng/ml	ng/ml
System Monitoring Compounds						
1) SA Tetrachlo...	3.457	4.176	24018395	196.6E6	17.638	17.964
2) SA Decachlor...	8.220	9.376	50569030	237.5E6	36.366	37.652
Target Compounds						
2) A alpha-BHC	3.897	4.572	8062234	73784437	4.212	4.719
3) MA gamma-BHC...	4.181	4.863	11051088	94903886	6.088	6.546
4) MA Heptachlor	4.480	5.391	10040747	83133650	5.605	6.040
5) MB Aldrin	4.728	5.704	9733074	81008453	5.534	6.003
6) B beta-BHC	4.432	5.026	5071064	38819471	6.085	6.078
7) B delta-BHC	4.637	5.250	7852841	65356568	4.441	4.617m
8) B Heptachlo...	5.173	6.093	7969278	61479769	4.907	5.104
9) A Endosulfan I	5.512	6.455	7936059	59000153	5.155	5.421
10) B trans-Chl...	5.399	6.328	8369620	63300042	5.015	5.322m
11) B cis-Chlor...	5.458	6.404	8420257	62549927	5.129	5.454
12) B 4,4'-DDE	5.624	6.554	14764025	117.3E6	9.925	11.481
13) MA Dieldrin	5.756	6.714	16944928	128.0E6	10.144	11.523
14) MA Endrin	6.014	6.934	14495780	86395037	10.253	10.219
15) B Endosulfa...	6.286	7.137	15531032	107.1E6	10.708m	11.964m
16) A 4,4'-DDD	6.142	7.044	12684954	93445849	9.651	11.137m
17) MA 4,4'-DDT	6.383	7.348	12005499	79816402	8.990	10.127
18) B Endrin al...	6.458	7.263	13763224	83681522	12.551	12.602
19) B Endosulfa...	6.670	7.488	13987836	88924570	10.008	10.857
20) A Methoxychlor	6.934	7.801	37085108	201.9E6	52.393	57.649
21) B Endrin ke...	7.164	7.964	16742697	100.5E6	10.493	11.771

(f)=RT Delta > 1/2 Window (#)=Amounts differ by > 25% (m)=manual int.

Data Path : Z:\pestpcbsrv\HPCHEM1\ECD\_D\Data\PD031522\  
 Data File : PD068619.D  
 Signal(s) : Signal #1: ECD1A.ch Signal #2: ECD2B.ch  
 Acq On : 15 Mar 2022 17:47  
 Operator : AR\AJ  
 Sample : PB143352BS  
 Misc :  
 ALS Vial : 12 Sample Multiplier: 1

Integration File signal 1: autoint1.e  
 Integration File signal 2: autoint2.e  
 Quant Time: Mar 16 06:33:34 2022  
 Quant Method : Z:\pestpcbsrv\HPCHEM1\ECD\_D\Method\PD031322CLP.M  
 Quant Title : GC Extractables  
 QLast Update : Mon Mar 14 07:24:04 2022  
 Response via : Initial Calibration  
 Integrator: ChemStation

Volume Inj. : 1 µl  
 Signal #1 Phase : ZB-MR2 Signal #2 Phase: ZB-MR1  
 Signal #1 Info : 30M x 0.32mm x0.2 Signal #2 Info : 30M x 0.32mm x 0.50µm



Instrument : ECD\_D  
 Client Sampled : PLCS352  
 Manual Integrations APPROVED  
 Reviewed By : Aboul Mirza 03/17/2022  
 Supervised By : Ankita Jodhani 03/18/2022