

Data Path : Z:\pestpcbsrv\HPCHEM1\ECD\_D\Data\PD031522\  
 Data File : PD068609.D  
 Signal(s) : Signal #1: ECD1A.ch Signal #2: ECD2B.ch  
 Acq On : 15 Mar 2022 12:16  
 Operator : AR\AJ  
 Sample : PEM199  
 Misc :  
 ALS Vial : 3 Sample Multiplier: 1

Instrument :  
 ECD\_D  
 ClientSampleId :  
 PEM199

Manual Integrations  
**APPROVED**

Reviewed By :Abdul Mirza 03/17/2022  
 Supervised By :Ankita Jodhani 03/18/2022

Integration File signal 1: autoint1.e  
 Integration File signal 2: autoint2.e  
 Quant Time: Mar 16 06:31:10 2022  
 Quant Method : Z:\pestpcbsrv\HPCHEM1\ECD\_D\Method\PD031322CLP.M  
 Quant Title : GC Extractables  
 QLast Update : Mon Mar 14 07:24:04 2022  
 Response via : Initial Calibration  
 Integrator: ChemStation

Volume Inj. : 1 µl  
 Signal #1 Phase : ZB-MR2 Signal #2 Phase: ZB-MR1  
 Signal #1 Info : 30M x 0.32mm x0.2 Signal #2 Info : 30M x 0.32mm x 0.50µm

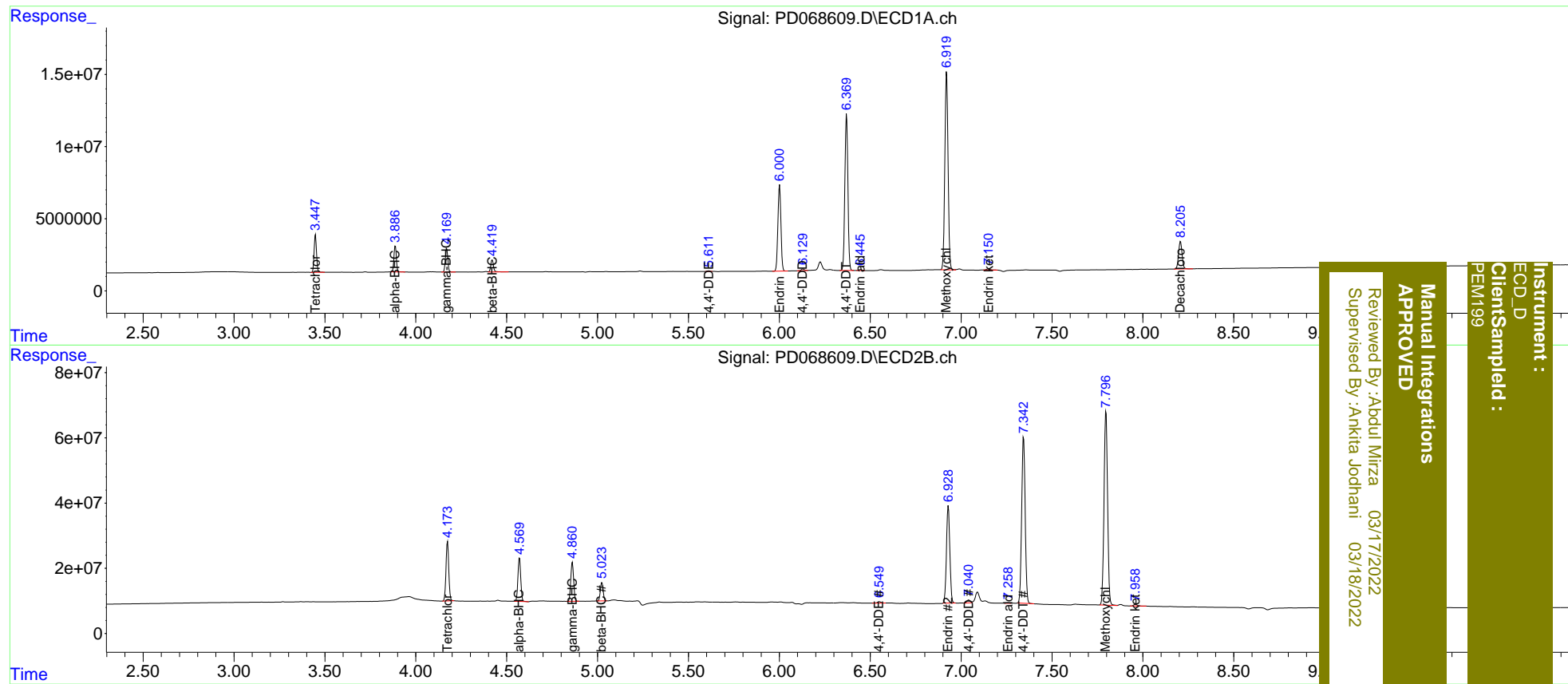
Compound	RT#1	RT#2	Resp#1	Resp#2	ng/ml	ng/ml
-----						
System Monitoring Compounds						
1) SA Tetrachlo...	3.448	4.175	23907983	192.5E6	17.556	17.586
27) SA Decachlor...	8.207	9.369	25552003	120.1E6	18.375	19.042
Target Compounds						
2) A alpha-BHC	3.887	4.571	16797366	144.3E6	8.775	9.226
3) MA gamma-BHC...	4.170	4.861	15684983	131.2E6	8.641	9.049
6) B beta-BHC	4.421	5.024	8924680	61240435	10.710	9.589
12) B 4,4'-DDE	5.611	6.551	463555	6074025	0.312m	0.595 #
14) MA Endrin	6.002	6.930	68905866	382.8E6	48.739	45.282
16) A 4,4'-DDD	6.130	7.040	1325664	12055729	1.009	1.437m#
17) MA 4,4'-DDT	6.370	7.344	126.1E6	681.6E6	94.459	86.486
18) B Endrin al...	6.445	7.258	843501	1478940	0.769m	0.223m#
20) A Methoxychlor	6.920	7.797	169.0E6	809.7E6	238.802	231.145
21) B Endrin ke...	7.151	7.959	1265756	6893682	0.793	0.807

(f)=RT Delta > 1/2 Window (#)=Amounts differ by > 25% (m)=manual int.

Data Path : Z:\pestpcbsrv\HPCHEM1\ECD\_D\Data\PD031522\  
 Data File : PD068609.D  
 Signal(s) : Signal #1: ECD1A.ch Signal #2: ECD2B.ch  
 Acq On : 15 Mar 2022 12:16  
 Operator : AR\AJ  
 Sample : PEM199  
 Misc :  
 ALS Vial : 3 Sample Multiplier: 1

Integration File signal 1: autoint1.e  
 Integration File signal 2: autoint2.e  
 Quant Time: Mar 16 06:31:10 2022  
 Quant Method : Z:\pestpcbsrv\HPCHEM1\ECD\_D\Method\PD031322CLP.M  
 Quant Title : GC Extractables  
 QLast Update : Mon Mar 14 07:24:04 2022  
 Response via : Initial Calibration  
 Integrator: ChemStation

Volume Inj. : 1 µl  
 Signal #1 Phase : ZB-MR2 Signal #2 Phase: ZB-MR1  
 Signal #1 Info : 30M x 0.32mm x0.2 Signal #2 Info : 30M x 0.32mm x 0.50µm



Instrument : ECD\_D  
 Client/Sample : PEM199  
 Manual Integrations APPROVED  
 Reviewed By : Abdul Mirza 03/17/2022  
 Supervised By : Ankitia Jodhani 03/18/2022