

Data Path : Z:\pestpcbsrv\HPCHEM1\ECD_D\Data\PD031522\
 Data File : PD068629.D
 Signal(s) : Signal #1: ECD1A.ch Signal #2: ECD2B.ch
 Acq On : 15 Mar 2022 20:07
 Operator : AR\AJ
 Sample : N1883-11MSD
 Misc :
 ALS Vial : 22 Sample Multiplier: 1

Instrument :
 ECD_D
 ClientSampleId :
 DBSA8MSD

Manual Integrations
APPROVED

Reviewed By :Abdul Mirza 03/17/2022
 Supervised By :Ankita Jodhani 03/18/2022

Integration File signal 1: autoint1.e
 Integration File signal 2: autoint2.e
 Quant Time: Mar 16 06:37:02 2022
 Quant Method : Z:\pestpcbsrv\HPCHEM1\ECD_D\Method\PD031322CLP.M
 Quant Title : GC Extractables
 QLast Update : Mon Mar 14 07:24:04 2022
 Response via : Initial Calibration
 Integrator: ChemStation

Volume Inj. : 1 µl
 Signal #1 Phase : ZB-MR2 Signal #2 Phase: ZB-MR1
 Signal #1 Info : 30M x 0.32mm x0.2 Signal #2 Info : 30M x 0.32mm x 0.50µm

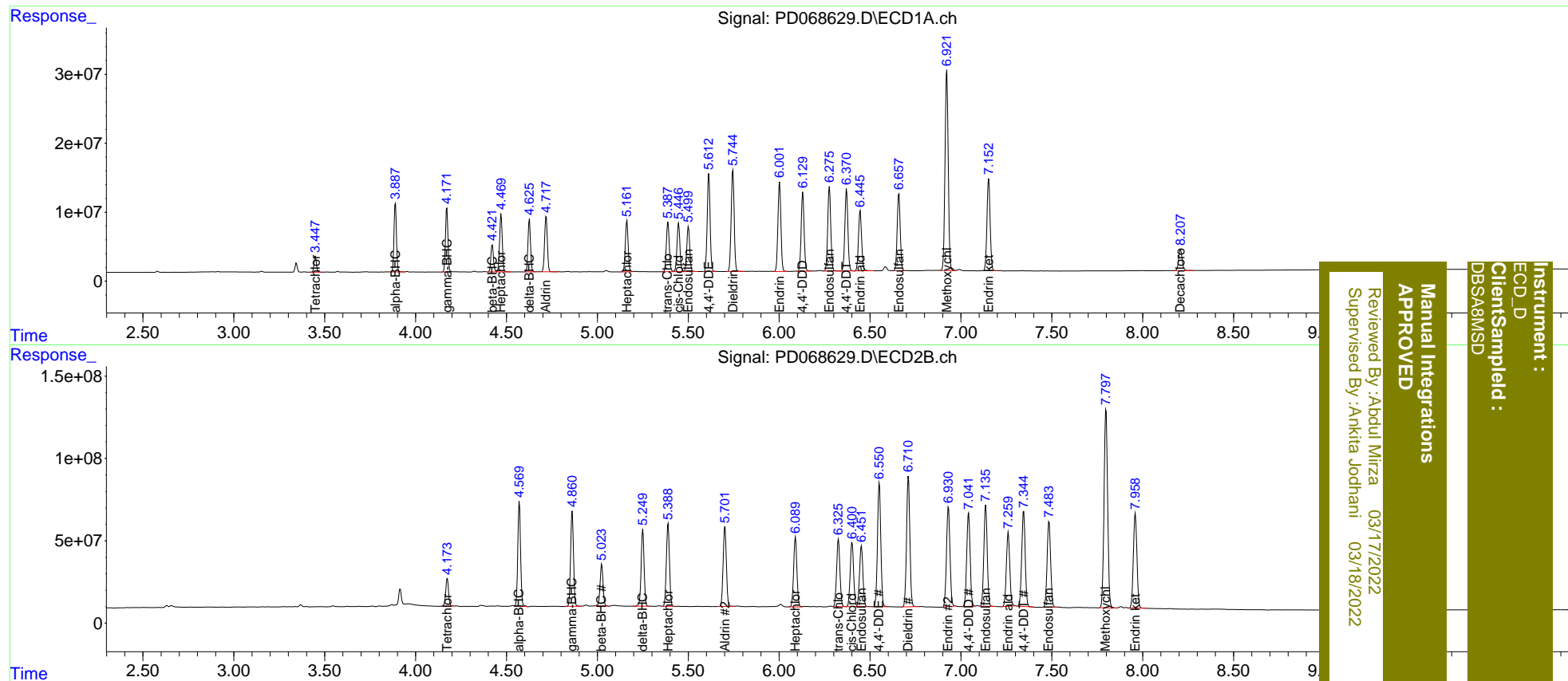
| Compound | RT#1 | RT#2 | Resp#1 | Resp#2 | ng/ml | ng/ml |
|-----------------------------|-------|-------|----------|----------|---------|---------|
| System Monitoring Compounds | | | | | | |
| 1) SA Tetrachlo... | 3.449 | 4.175 | 21439285 | 181.8E6 | 15.744 | 16.613 |
| 2) SA Decachlor... | 8.208 | 9.370 | 41040429 | 191.2E6 | 29.514 | 30.314 |
| Target Compounds | | | | | | |
| 2) A alpha-BHC | 3.889 | 4.571 | 92865060 | 670.9E6 | 48.512 | 42.906 |
| 3) MA gamma-BHC... | 4.172 | 4.862 | 87299267 | 636.9E6 | 48.093 | 43.927 |
| 4) MA Heptachlor | 4.471 | 5.389 | 85304499 | 594.8E6 | 47.621 | 43.217 |
| 5) MB Aldrin | 4.718 | 5.702 | 85107915 | 593.4E6 | 48.392 | 43.971 |
| 6) B beta-BHC | 4.422 | 5.024 | 39050112 | 285.4E6 | 46.861 | 44.685 |
| 7) B delta-BHC | 4.626 | 5.250 | 73657125 | 525.8E6 | 41.657 | 37.146 |
| 8) B Heptachlo... | 5.163 | 6.090 | 78921221 | 526.3E6 | 48.596 | 43.693 |
| 9) A Endosulfan I | 5.501 | 6.453 | 73686694 | 473.9E6 | 47.861 | 43.542 |
| 10) B trans-Chl... | 5.389 | 6.325 | 81147659 | 521.4E6 | 48.623 | 43.836m |
| 11) B cis-Chlor... | 5.447 | 6.402 | 79206790 | 504.7E6 | 48.250 | 44.007 |
| 12) B 4,4'-DDE | 5.613 | 6.551 | 155.3E6 | 947.3E6 | 104.421 | 92.728 |
| 13) MA Dieldrin | 5.746 | 6.710 | 169.0E6 | 1003.1E6 | 101.183 | 90.275m |
| 14) MA Endrin | 6.003 | 6.931 | 147.3E6 | 802.7E6 | 104.221 | 94.947 |
| 15) B Endosulfa... | 6.276 | 7.136 | 141.6E6 | 789.6E6 | 97.631 | 88.231 |
| 16) A 4,4'-DDD | 6.130 | 7.042 | 127.7E6 | 736.4E6 | 97.132 | 87.762 |
| 17) MA 4,4'-DDT | 6.371 | 7.345 | 137.3E6 | 766.5E6 | 102.832 | 97.256 |
| 18) B Endrin al... | 6.446 | 7.261 | 105.0E6 | 583.2E6 | 95.773 | 87.828 |
| 19) B Endosulfa... | 6.659 | 7.485 | 130.0E6 | 701.7E6 | 93.049 | 85.674 |
| 20) A Methoxychlor | 6.922 | 7.798 | 355.2E6 | 1654.1E6 | 501.862 | 472.186 |
| 21) B Endrin ke... | 7.153 | 7.959 | 161.7E6 | 785.7E6 | 101.359 | 92.018 |

(f)=RT Delta > 1/2 Window (#)=Amounts differ by > 25% (m)=manual int.

Data Path : Z:\pestpcbsrv\HPCHEM1\ECD_D\Data\PD031522\
 Data File : PD068629.D
 Signal(s) : Signal #1: ECD1A.ch Signal #2: ECD2B.ch
 Acq On : 15 Mar 2022 20:07
 Operator : AR\AJ
 Sample : N1883-11MSD
 Misc :
 ALS Vial : 22 Sample Multiplier: 1

Integration File signal 1: autoint1.e
 Integration File signal 2: autoint2.e
 Quant Time: Mar 16 06:37:02 2022
 Quant Method : Z:\pestpcbsrv\HPCHEM1\ECD_D\Method\PD031322CLP.M
 Quant Title : GC Extractables
 QLast Update : Mon Mar 14 07:24:04 2022
 Response via : Initial Calibration
 Integrator: ChemStation

Volume Inj. : 1 µl
 Signal #1 Phase : ZB-MR2 Signal #2 Phase: ZB-MR1
 Signal #1 Info : 30M x 0.32mm x0.2 Signal #2 Info : 30M x 0.32mm x 0.50µm



Instrument : ECD_D
 Client Sampled : DBSAS8MSD
 Manual Integrations APPROVED
 Reviewed By : Aboul Mirza 03/17/2022
 Supervised By : Ankitia Jodhani 03/18/2022