

Data Path : Z:\pestpcbsrv\HPCHEM1\ECD_D\Data\PD041421\
Data File : PD062151.D
Signal(s) : Signal #1: ECD1A.ch Signal #2: ECD2B.ch
Acq On : 14 Apr 2021 08:45
Operator : AR\AJ
Sample : HEXANE
Misc :
ALS Vial : 1 Sample Multiplier: 1

Instrument :
ECD_D
ClientSampleId :
HEXANE

Integration File signal 1: autoint1.e
Integration File signal 2: autoint2.e
Quant Time: Apr 14 15:42:07 2021
Quant Method : Z:\pestpcbsrv\HPCHEM1\ECD_D\Method\PD032921.M
Quant Title : GC Extractables
QLast Update : Tue Mar 30 04:47:56 2021
Response via : Initial Calibration
Integrator: ChemStation

Volume Inj. : 2 µl
Signal #1 Phase : ZB-MR2 Signal #2 Phase: ZB-MR1
Signal #1 Info : 30M x 0.32mm x0.2 Signal #2 Info : 30M x 0.32mm x 0.50µm

Compound	RT#1	RT#2	Resp#1	Resp#2	ng/ml	ng/ml
----------	------	------	--------	--------	-------	-------

System Monitoring Compounds

Target Compounds

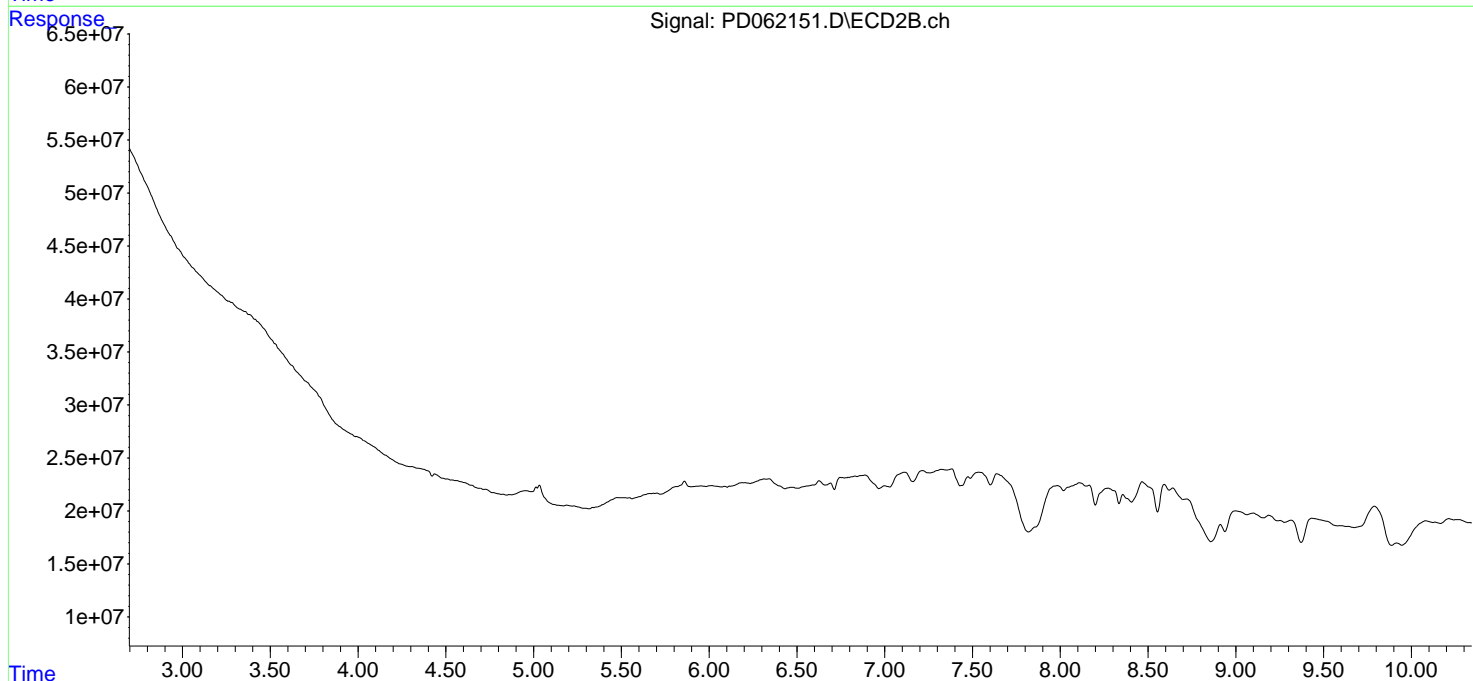
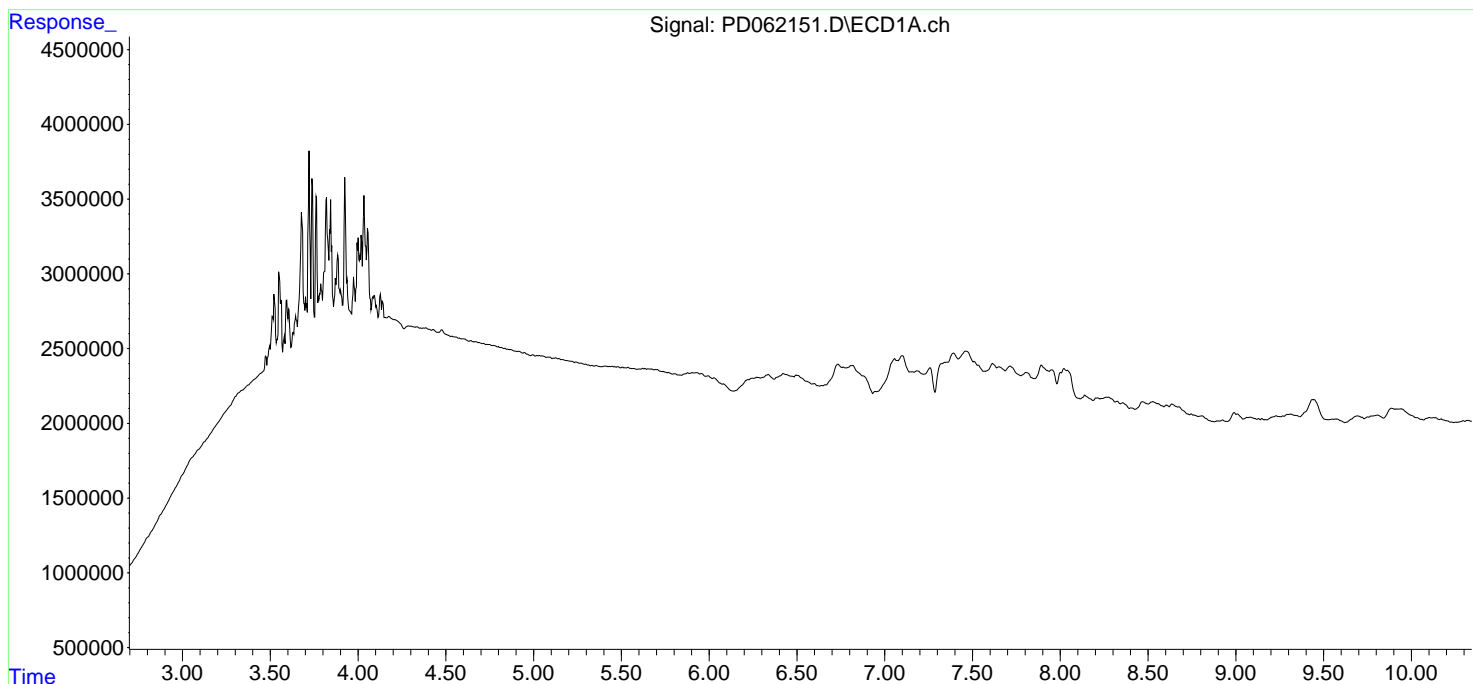
(f)=RT Delta > 1/2 Window (#)=Amounts differ by > 25% (m)=manual int.

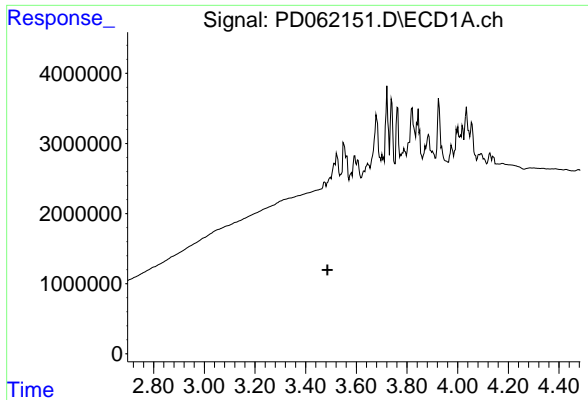
Data Path : Z:\pestpcbsrv\HPCHEM1\ECD_D\Data\PD041421\
 Data File : PD062151.D
 Signal(s) : Signal #1: ECD1A.ch Signal #2: ECD2B.ch
 Acq On : 14 Apr 2021 08:45
 Operator : AR\AJ
 Sample : HEXANE
 Misc :
 ALS Vial : 1 Sample Multiplier: 1

Instrument :
 ECD_D
 ClientSampleId :
 HEXANE

Integration File signal 1: autoint1.e
 Integration File signal 2: autoint2.e
 Quant Time: Apr 14 15:42:07 2021
 Quant Method : Z:\pestpcbsrv\HPCHEM1\ECD_D\Method\PD032921.M
 Quant Title : GC Extractables
 QLast Update : Tue Mar 30 04:47:56 2021
 Response via : Initial Calibration
 Integrator: ChemStation

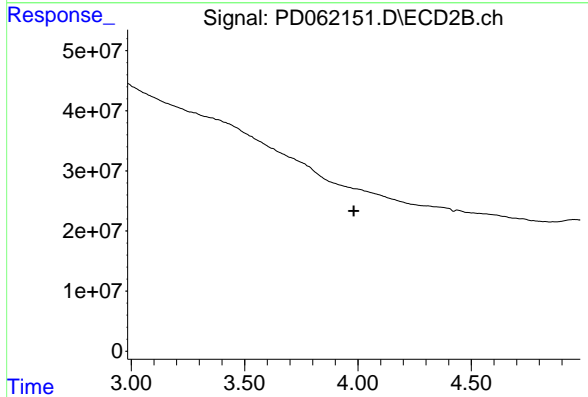
Volume Inj. : 2 µl
 Signal #1 Phase : ZB-MR2 Signal #2 Phase: ZB-MR1
 Signal #1 Info : 30M x 0.32mm x 0.2 Signal #2 Info : 30M x 0.32mm x 0.50µm



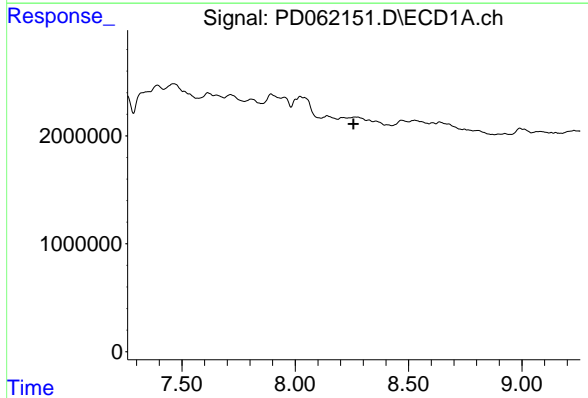


#1 Tetrachloro-m-xylene
 R.T.: 0.000 min
 Exp R.T. : 3.486 min
 Response: 0
 Conc: N.D.

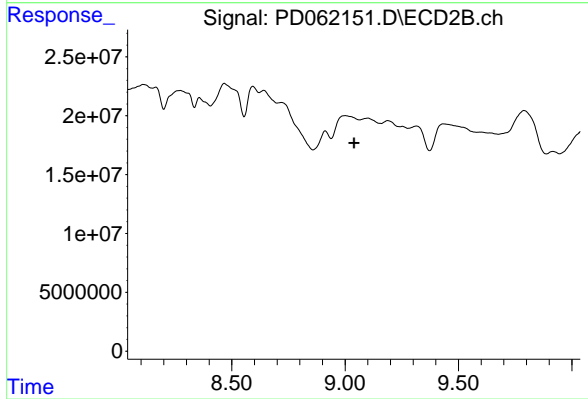
Instrument :
 ECD_D
 ClientSampleId :
 HEXANE



#1 Tetrachloro-m-xylene
 R.T.: 0.000 min
 Exp R.T. : 3.982 min
 Response: 0
 Conc: N.D.



#28 Decachlorobiphenyl
 R.T.: 0.000 min
 Exp R.T. : 8.257 min
 Response: 0
 Conc: N.D.



#28 Decachlorobiphenyl
 R.T.: 0.000 min
 Exp R.T. : 9.040 min
 Response: 0
 Conc: N.D.